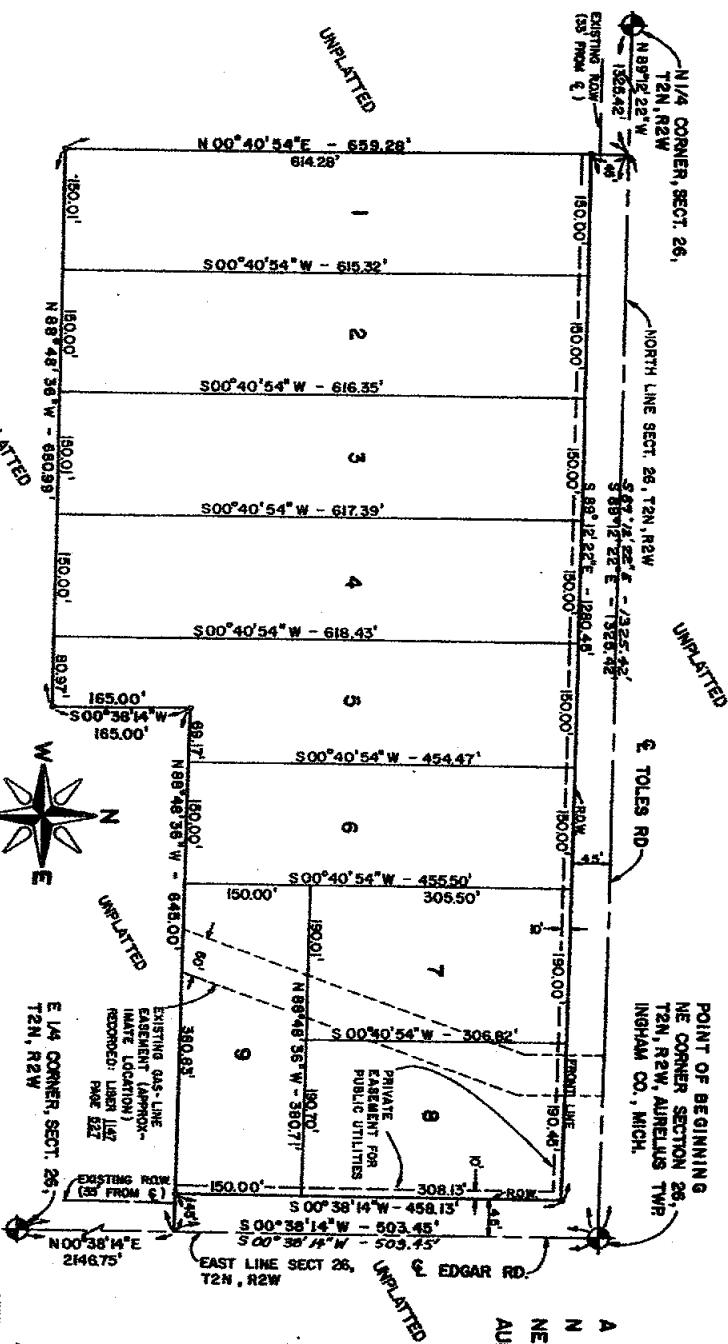


SANDY ESTATES

A SUBDIVISION ON PART OF THE
N 1/2 OF THE NE 1/4 OF THE
N 1/4 OF SECTION 26, T2N, R2W,
AURELIUS TOWNSHIP, INGHAM COUNTY,
MICHIGAN



SURVEYOR'S CERTIFICATE

I, LARRY D. STEPHENS, SURVEYOR, CERTIFY:
THAT I HAVE SURVEYED, DIVIDED AND MAPPED THE LAND SHOWN ON THIS PLAT,
DESCRIBED AS FOLLOWS:

SANDY ESTATES, A SUBDIVISION ON PART OF THE NORTH 1/2 OF THE NORTHEAST 1/4 OF
SECTION 26, T2N, R2W, AURELIUS TOWNSHIP, INGHAM COUNTY, MICHIGAN; BEGINNING AT THE
NORTHWEST CORNER OF SAID SECTION 26; THENCE S 00° 40' 54\"

THAT I HAVE MADE SUCH SURVEY, LAND DIVISION AND PLAT BY THE DIRECTION
OF THE OWNER OF SUCH LAND.

THAT THE REQUIRED MONUMENTS AND LOT MARKERS HAVE BEEN LOCATED IN THE
GROUND ON THAT SURVEY HAS BEEN DEPOSITED WITH THE INITIALITY, AS
REQUIRED BY SECTION 125 OF THE ACT.

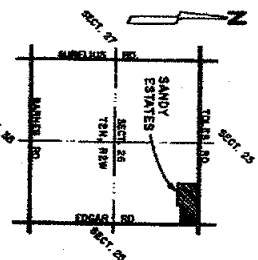
THAT THE ACCURACY OF SURVEY IS WITHIN THE LIMITS REQUIRED BY SECTION
125 OF THE ACT.

THAT THE BEARINGS SHOWN ON THE PLAT ARE EXPRESSED AS REQUIRED BY
SECTION 126(3) OF THE ACT AND AS EXPLAINED IN THE LEGEND.

LEGEND:

1. ALL DIMENSIONS ARE IN FEET.
2. CONCRETE MONUMENTS HAVE BEEN PLACED AT ALL POINTS MARKED 1.
3. LOT CORNERS HAVE BEEN MARKED WITH 1/2\"
4. ALL BEARINGS ARE DERIVED FROM ASTRONOMICAL OBSERVATIONS.

LOCATION MAP



RECORDING CERTIFICATE
STATE OF MICHIGAN
INGHAM COUNTY
THIS PLAT WAS RECEIVED FOR RECORD ON
THE 17th DAY OF September, 1995,
AT 1:30 P.M., AND RECORDED IN
LIBER 37 OF PLATS ON PAGES 41-42.

PAUL JOHNSON, REGISTER OF DEEDS

CERTIFIED TRUE COPY OF
RECORDED PLAT
BY DEPARTMENT OF COMMERCE
OF Richard S. Shaw
Surveyor General
Michigan
November 14, 1995



June 24, 1995

STEPHENS SURVEYING SERVICES
1115 S. HAZARD
HUBBARD, MI 49840
Larry D. Stephens, Owner
Registered Professional Engineer
No. 19365

SANDY ESTATES

A SUBDIVISION ON PART OF THE
N 1/2 OF THE NE 1/4 OF THE
NE 1/4 OF SECTION 26, T2N, R2W,
AURELIUS TOWNSHIP, INGHAM COUNTY,
MICHIGAN

PROPRIETOR'S CERTIFICATE

IN AS PROPRIETORS CERTIFY THAT WE CAUSED THE LAND SHOWN IN THIS PLAT TO BE SURVEYED, DIVIDED,
MAPEED AND DEDICATED AS REPRESENTED ON THIS PLAT AND THAT THE SAME ARE FOR THE USE OF THE PUBLIC;
THAT THE PUBLIC UTILITY EASEMENTS ARE PRIVATE EASEMENTS AND THAT ALL OTHER EASEMENTS ARE FOR THE
USE SHOWN ON THE PLAT.

WITNESSES:

Garth C. and Sandra L. Haynes
Garth C. Haynes
Sandra L. Haynes

GARTH C. AND SANDRA L. HAYNES
1201 S. DOUGLAS ROAD
MUSKOGEE, MI 49634

ACKNOWLEDGEMENT

STATE OF MICHIGAN)
COUNTY) S.S.

PERSONALLY CAME BEFORE ME THIS 24th DAY OF July, 1985, THE ABOVE NAMED GARTH C. HAYNES AND SANDRA L. HAYNES,
MARRIED, TO ME KNOWN TO BE THE PERSONS WHO EXECUTED THE FOREGOING INSTRUMENT AND ACKNOWLEDGED
THAT THEY EXECUTED THE SAME AS THEIR FREE ACT AND DEED.

NOTARY PUBLIC, Edward J. Schmitt STATE COUNTY,
EMERY A. HANAWALT MICHIGAN

MY COMMISSION EXPIRES 10/1/87

PROPRIETOR'S CERTIFICATE

THE FEDERAL LAND BANK OF ST. PAUL, A CORPORATION NOW ORGANIZED AND EXISTING UNDER THE LAWS OF
THE STATE OF MICHIGAN, BY Paul A. DeBevoise, President, AND P. A. DeBevoise,
SECRETARY, AS PROPRIETOR, HAS CAUSED THE LAND ENRAGED IN THIS PLAT TO BE SURVEYED, DIVIDED, MAPPED AND
DEDICATED AS REPRESENTED ON THIS PLAT AND THAT THE SAME ARE FOR THE USE OF THE PUBLIC;
THAT THE PUBLIC UTILITY EASEMENTS ARE PRIVATE EASEMENTS AND THAT ALL OTHER EASEMENTS ARE
FOR THE USE SHOWN ON THE PLAT.

WITNESSES:

Paul A. DeBevoise
Paul A. DeBevoise
E. LeBlanc

FEDERAL LAND BANK OF ST. PAUL
375 JACKSON ST.
ST. PAUL, MINNESOTA 55101

Paul A. DeBevoise
Paul A. DeBevoise - Vice President

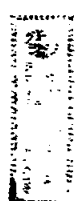
ACKNOWLEDGEMENT

STATE OF MINNESOTA)
COUNTY) S.S.

PERSONALLY CAME BEFORE ME THIS 27th DAY OF JUNE, 1985, THE ABOVE NAMED Paul A. DeBevoise,
President, AND P. A. DeBevoise, Secretary, TO ME KNOWN TO BE THE PERSONS WHO
EXECUTED THE FOREGOING INSTRUMENT, AND TO ME KNOWN TO BE SUCH President AND Secretary
OF SAID CORPORATION, AND ACKNOWLEDGED THAT THEY EXECUTED THE FOREGOING INSTRUMENT AS SUCH
OFFICERS AS THE FREE ACT AND DEED OF SAID CORPORATION, BY ITS AUTHORITY.

NOTARY PUBLIC, Edward J. Schmitt MINNESOTA COUNTY, MINNESOTA

MY COMMISSION EXPIRES 19



SEAL

COUNTY TREASURER'S CERTIFICATE

THE RECORDS IN MY OFFICE SHOW NO UNPAID TAXES OR SPECIAL ASSESSMENTS FOR THE FIVE YEARS
PRECEDING July 3, 1985, INVOLVING THE LAND INCLUDED IN THIS PLAT.

Don Moore
DON MOORE - COUNTY TREASURER
COUNTY OF INGHAM

COUNTY DEATH COMMISSIONER'S CERTIFICATE

APPROVED ON July 3, 1985, 1985 AS COMPLYING WITH SECTION 192 OF ACT 286, P.A. 1967
AND THE APPLICABLE RULES AND REGULATIONS PUBLISHED BY MY OFFICE IN THE COUNTY OF INGHAM.

George J. Griffith
GEORGE GRIFITH, DEATH COMMISSIONER

CERTIFICATE OF COUNTY ROAD COMMISSIONERS

APPROVED ON July 9th, 1985 AS COMPLYING WITH SECTION 183 OF ACT 286, P.A. 1967
AND THE APPLICABLE RULES AND REGULATIONS OF THE BOARD OF ROAD COMMISSIONERS OF
INGHAM COUNTY.

Michael E. Hopper
MICHAEL E. HOPPER, MEMBER

Thomas H. Mitchell
THOMAS H. MITCHELL, CHAIRMAN

CERTIFICATE OF MUNICIPAL APPROVAL

I CERTIFY THAT THIS PLAT WAS APPROVED BY THE TOWNSHIP BOARD OF THE TOWNSHIP OF AURELIUS
AT A MEETING HELD June 17, 1985, AND WAS RETURNED AND FORWARDED TO BE IN COMPLIANCE WITH
ACT 286, P.A. OF 1967, TOWNSHIP BOARD HEALTH DEPARTMENT HAVING APPROVED PRELIMINARY PLAT ON
JUNE 17, 1985.

Thomas H. Mitchell
THOMAS MITCHELL, CLERK

COUNTY PLAT BOARD CERTIFICATE

THIS PLAT HAS BEEN RETURNED AND IS APPROVED BY THE INGHAM COUNTY PLAT BOARD ON July 17, 1985
1985 AS BEING IN COMPLIANCE WITH ALL OF THE PROVISIONS OF ACT 286, P.A. 1967, AND THE PLAT
BOARD'S APPLICABLE RULES AND REGULATIONS.

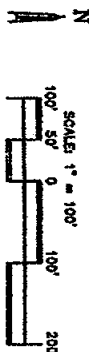
Paula Johnson
PAULA JOHNSON, DIRECTOR OF RECORDS
Don Moore
DON MOORE, COUNTY CLERK
DON MOORE, COUNTY TREASURER



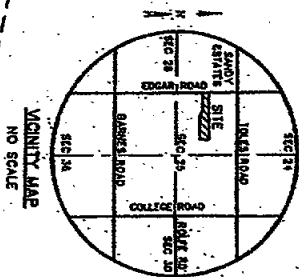
WHITTAKER ESTATES

A SUBDIVISION ON PART OF THE NW 1/4 OF SECTION 25,
T2N, R2W, AURELIUS TOWNSHIP, INGHAM COUNTY, MICHIGAN

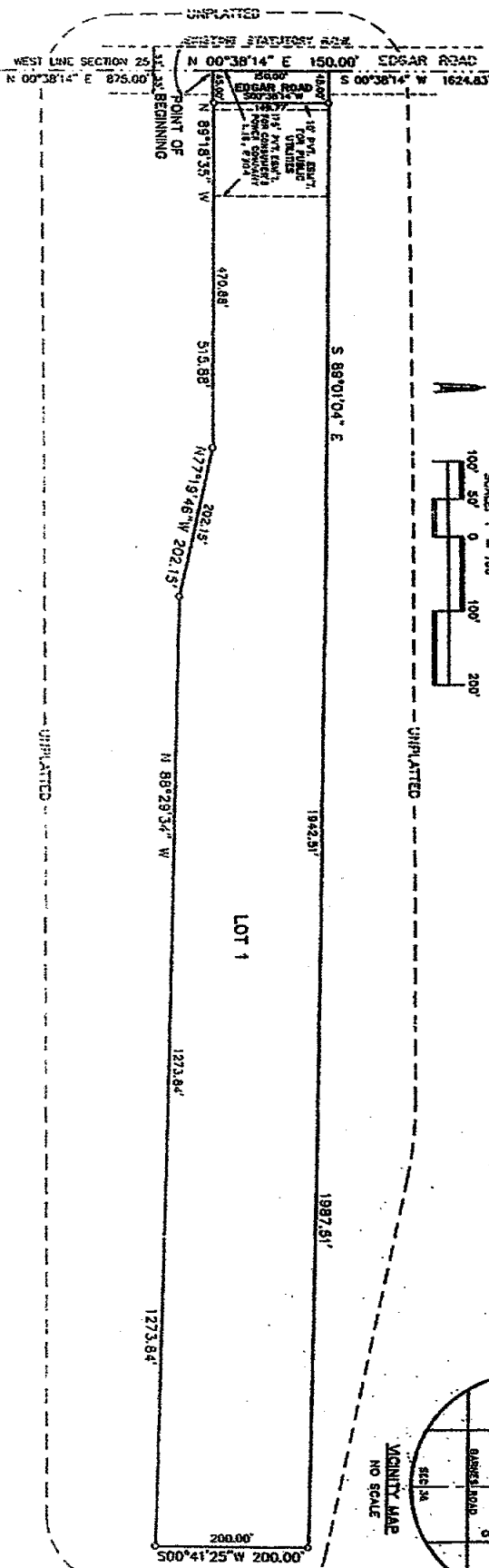
NORTHWEST CORNER
SECTION 25, T2N, R2W,
LIBER 7, PAGE 375
INGHAM COUNTY RECORDS



UNPLATTED



MAGNETIC MAP
NO SCALE



SURVEYOR'S CERTIFICATE

I, James R. Stephenson, Surveyor, certify:

That I have surveyed, divided and mapped the land shown on this
plan, described as follows:

WHITTAKER ESTATES, a subdivision on part of the NW 1/4 of Section
25, T2N, R2W, Aurelius Township, Ingham County, Michigan, beginning
on the west line of said Section 25 at a point 100'25\"/>

That I have made such survey, land division and plat as by the
direction of the owner of such land.

That such plan is a correct representation of all the exterior
boundaries of the land surveyed and the subdivision of it.

That the required monuments and lot markers have been located in
the ground of that survey has been deposited with the municipality,
as required by section 125 of the act.

That the accuracy of survey is within the limits required by
section 126 of the act.

That the bearings shown on the plan are expressed as required by
section 126(2) of the act and as explained in the legend.

SEPTEMBER 27, 1984



Stephenson & Associates, Inc.
1102 East Main Street, Suite 112
East Lansing, Michigan 48823
James R. Stephenson, President
Professional Land Surveyor No. 16052

EXAMINED AND APPROVED
DATE: Dec 12, 1994
BY THE DEPARTMENT
OF CONSERVATION
By: [Signature]
Agent: [Signature]
Acting Surveyor

LEGEND

1. ALL DIMENSIONS ARE IN FEET.
2. ALL CURVE DIMENSIONS ARE ARC MEASUREMENTS.
3. MONUMENTS CONSISTING OF A SOLID STEEL ROD 1/2 INCH IN
DIAMETER BY 36 INCHES IN LENGTH ENCASED IN A CONCRETE
CINDER BLOCK 16 INCHES IN DIAMETER BY 36 INCHES IN LENGTH
HAVE BEEN PLACED AT ALL CORNERS AND AT THE MIDDLE OF EACH
SIDE OF EACH LOT. THE MONUMENTS HAVE BEEN PLACED WITH STEEL ROD 1/2 INCH
IN DIAMETER BY 36 INCHES IN LENGTH.
4. (R) INDICATES RADIAL LOT LINES.
5. THE BEARING OF THE WEST LINE OF SECTION 25 AS PLATTED IN
SANDY ESTATES RECORDED IN LIBER 39, PAGE 41 & 42, INGHAM
COUNTY RECORDS WAS USED AS THE BEARING ORIENTATION FOR
THIS PLAN.