

LAND CORNER RECORDATION CERTIFICATE
Filing Requirement of Act 74, Mich. P.A. 1970

For corners in BUNKERHILL TOWNSHIP

INGHAM COUNTY

Located In:

Corner Code #

1. Public Land Survey

T 1N R 1E

A-11

2. Property Controlling
in Section

S T R
S T R

3. Miscellaneous
Property in Sec.

S T R
S T R

Paula Johnson
INGHAM COUNTY
REGISTER OF DEEDS
OFFICIAL SEAL



L-11 P-51

CRNR 17.00

2003-096809



2003-096809

Page: 1 of 2

10/31/2003 08:12A

Register of Deeds Stamp & File Number

4. Lot No. _____, Recorded Plat _____

5. Private Claims _____

I, Maurice H. Mahieu, in a field survey on June 30, 2003, do hereby state that under requirements of P.A. 74, Michigan P.A. of 1970, the corner points mentioned in lines 1 and 2 above were in conformance with regulations and rules therefore as required in the current manual of survey instructions of the United States Department of the Interior, Bureau of Land Management or by a decree of a Court of Law and /or that the corner points mentioned in lines 3, 4 and 5 above were in conformance with the rules of the Michigan Board of Land Surveyors or by a Decree of a Court of Law; established, re-established, monumented, recovered, found as expressed below:

NOTE: Not more than 2 corners, all in the same town and range, may be recorded on this certificate.

A. Description of original monument and accessories and/or subsequent restoration:

1. Original corner set by J. Wampler January 30, 1826; 35.84 chains, intersect meridian, witnessed by: Elm 16" S 61 1/2 E 20; Elm 9" N 42 E 18.
2. Book 3, Page 70 of County Surveyors Records shows a survey by A. Jackson C.S. on August 7, 1856. Witnesses: Elm 16" S 61 1/2 E 20; DO 9" N 42 E 18.
3. Book 3, Page 23 of County Surveyors Records shows a survey by A. P. Drake on Feb. 12, 1877 of Section 30. A-11 was a black walnut stake witnessed by Swamp Oak 14" S 7° E 29 1/4 lks. Measured 26.18 ch (1727.88 to M-10).

B. Description of corner evidence found and/or method applied in restoring or reestablishing corner:

Excavated 3' x 3' hole 2' deep on line with M-10 and M-11, Leslie Twp. T1N, R1W, at prorated County Surveyor Distance found remains of old North-South wire fence. Found no evidence of corner. Measured between A-13 and A-10, measured 7894.57'. Prorated position of corner based on County Surveyors Jackson and Drake and set corner on standard township line delineated by M-11 & M-10. See back for proration. Set 3/4" x 24" form pin with 2 1/2" dia. aluminum cap stamped "PA 345, PS #28414". Corner falls in North-South fence line. Farm field to NE-NW & SE. Woods to SW.

C. Description of monument for corner and accessories established to perpetuate locating the position of the corner:

Set 3/4" x 24" smooth iron rod and 2 1/2" aluminum cap stamped PA 345, PS #28414, 1' below grade witnessed by:

Set Nail and Tag #28414 East side 24" Walnut, S 45° W 42.98'

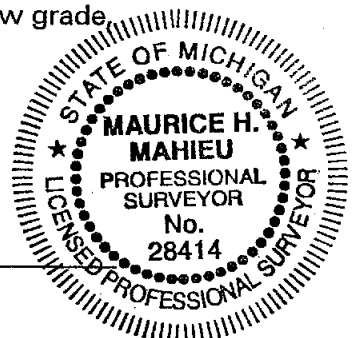
Set Nail and Tag #28414 North side 15" Walnut S 86° W 93.38'

Set Nail and Tag #28414 East side 21" Walnut NSW 150.07'

Found 3/4" rod & cap #18994 (Ron Helsel) (M-11, T1N, R1W) South 912.93'

Signed by Maurice H. Mahieu
Surveyor's Michigan License No. 28414

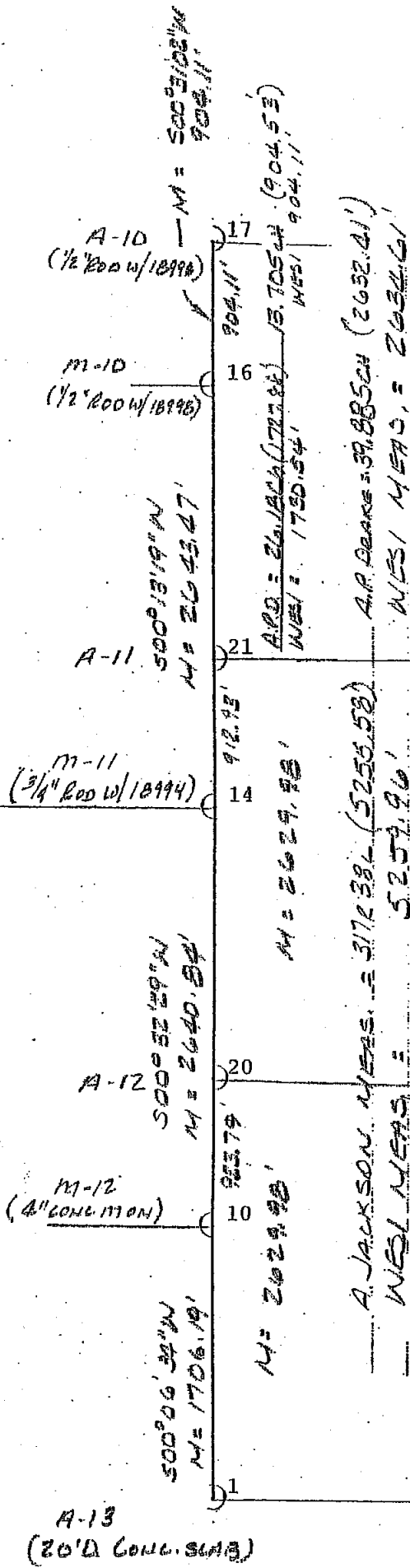
Date 10-03-03



LESLIE TWP. T14, R14

SECTION 25

SECTION 30



SECTION 30

31

SECTION 31

1:1000

BUNKER HILL TWP. T14, R14



2003-096809

Page: 2 of 2

10/31/2003 08:12A

LAND CORNER RECORDATION CERTIFICATE
Filing Requirement of Act 74, Mich. P.A. 1970

For corners in BUNKERHILL TOWNSHIP

INGHAM COUNTY

Located In:

Corner Code #

1. Public Land Survey

T 1N R 1E

A-12

T R

T R

T R

T R

2. Property Controlling
in Section

S T R

S T R

3. Miscellaneous
Property in Sec.

S T R

S T R

Paula Johnson
INGHAM COUNTY
REGISTER OF DEEDS
OFFICIAL SEAL



L-11 P-53

CRNR 17.00

2003-096810



2003-096810

Page: 1 of 2

10/31/2003 08:12A

Register of Deeds Stamp & File Number

4. Lot No. _____, Recorded Plat _____

5. Private Claims _____

I, Maurice H. Mahieu, in a field survey on June 30, 2003, do hereby state that under requirements of P.A. 74, Michigan P.A. of 1970, the corner points mentioned in lines 1 and 2 above were in conformance with regulations and rules therefore as required in the current manual of survey instructions of the United States Department of the Interior, Bureau of Land Management or by a decree of a Court of Law and/or that the corner points mentioned in lines 3, 4 and 5 above were in conformance with the rules of the Michigan Board of Land Surveyors or by a Decree of a Court of Law; established, re-established, monumented, recovered, found as expressed below:

NOTE: Not more than 2 corners, all in the same town and range, may be recorded on this certificate.

A. Description of original monument and accessories and/or subsequent restoration:

1. Original monument not set in original GLO Survey.

2. Book 3, Page 70 of the County Surveyor's Records shows a survey by A. Jackson on August 7, 1856. He did not set this corner as there was common ownership on both sides of 1/4 line.

B. Description of corner evidence found and/or method applied in restoring or reestablishing corner:

Excavated 2' x 2' x 1" deep hole on line with M-11 and M-12, Leslie Twp. at approximate prorated County Surveyor Distance. Found North-South wire fence through 24" Maple, East 6.5'. Found no further evidence of corner. Swampy area water table 6" below grade. Set 3/4" x 24" form pin with aluminum cap stamped "PA 345 PS#28414" halfway between A-13 & A-11 and on line between M-11 & M-12, T1N, R2W. Established corner in accordance to standard methods. No other evidence to dispute this location. See back for distances.

C. Description of monument for corner and accessories established to perpetuate locating the position of the corner:

Set 3/4" x 24" smooth iron rod and 2 1/2" aluminum cap stamped PA 345, PS #28414, witnessed by:

Set Nail and Tag #28414 North side 12" Maple, S 85° W 16.31'

Set Nail and Tag #28414 West side 32" Maple N 11° E 65.65'

Set Nail and Tag #28414 SE side 12" Maple N 43° E 29.52'

Set Nail and Tag #28414 West side 24" Maple S 21° W 43.21'

Signed by Maurice H. Mahieu
Surveyor's Michigan License No. 28414

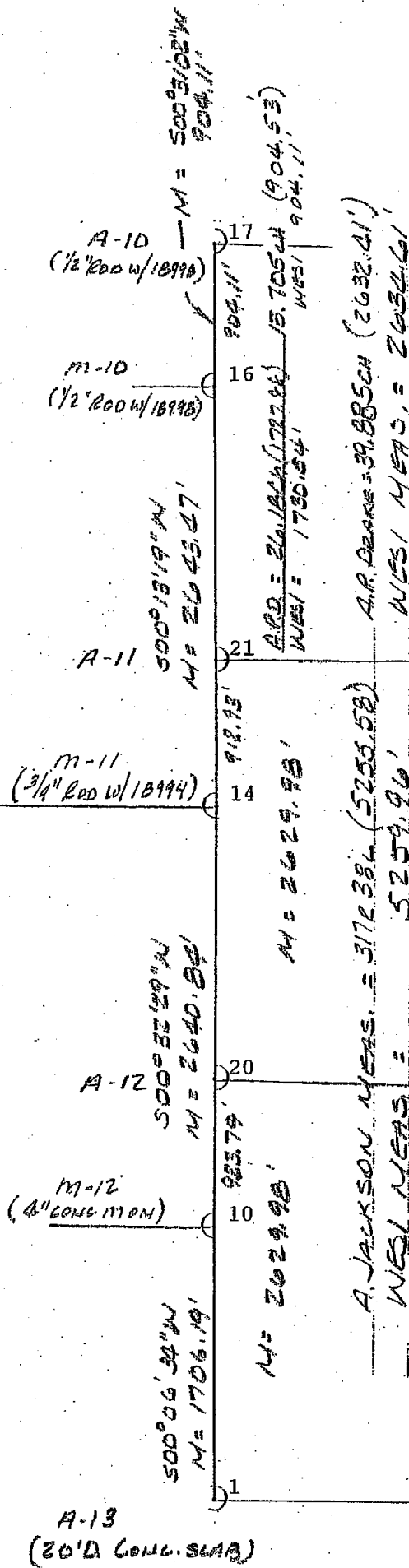
Date 10-03-03



LESLIE TWP. T1N, R1W

SECTION 25

SECTION 30



1:1000

BUNKER HILL TWP. T1N, R1E



2003-096810
Page: 2 of 2
10/31/2003 08:12A

LAND CORNER RECORDATION CERTIFICATE
Filing Requirement of Act 74, Mich. P.A. 1970

For corners in BUNKERHILL TOWNSHIP

INGHAM COUNTY

Located In:

Corner Code #

1. Public Land Survey

T 1N R 1E

A-13

2. Property Controlling
in Section

S T R
S T R

3. Miscellaneous
Property in Sec.

S T R
S T R

Paula Johnson
INGHAM COUNTY
REGISTER OF DEEDS
OFFICIAL SEAL



L-11 P-55

CRNR 17.00

2003-096811



2003-096811

Page: 1 of 2

10/31/2003 08:12A

Register of Deeds Stamp & File Number

4. Lot No. _____, Recorded Plat _____

5. Private Claims _____

I, Maurice H. Mahieu, in a field survey on June 30, 2003, do hereby state that under requirements of P.A. 74, Michigan P.A. of 1970, the corner points mentioned in lines 1 and 2 above were in conformance with regulations and rules therefore as required in the current manual of survey instructions of the United States Department of the Interior, Bureau of Land Management or by a decree of a Court of Law and/or that the corner points mentioned in lines 3, 4 and 5 above were in conformance with the rules of the Michigan Board of Land Surveyors or by a Decree of a Court of Law; established, re-established, monumented, recovered, found as expressed below:

NOTE: Not more than 2 corners, all in the same town and range, may be recorded on this certificate.

A. Description of original monument and accessories and/or subsequent restoration:

- Original monument set by J. Wampler on January 19, 1826, West on South boundary of Sec. 31; 13.97 Hickory 13" Dia. in Marsh; 31.23 Run 16 lks wide course South; 35.50 intersect meridian; 14.18 chs (935.88') North of post corner of T's 1N & 1S, R1W in marsh set post, Tam. 9 in S 38° W 73 lks. No other bearing tree.
- Book 3, Page 70 of the County Surveyors records show a survey by A. Jackson C.S. on August 7, 1856. Witness: Tam 9° S 38 W 75 lks; No other tree. Measured 145.6 (2396.46') to C-13, 317r 38L (5255.57') to A-11.
- An Act 74 LCRC recorded in Liber 3, Page 149 on July 11, 1974 by Dwayne Scott, PS 12029, notes "Found pointed stone set by Aaron Jackson in 1856. Replaced with 20' dia. concrete monument with 2' dia. brass cap." Witnessed by S 78° E 31.16' Clump 5 Maple; S 00° 07' 36" W 50.0' conc. mon. 12' diameter 18" high; S 89° 31' 09" E 50.00' Concrete Mon. 12" dia. 18" high; S 3° W 42.30' 8" Maple.

(Continued On Back)

B. Description of corner evidence found and/or method applied in restoring or reestablishing corner:

Found raised 20' diameter concrete pad with brass cap missing. Screwed 2 1/2" Aluminum Remon. Cap #28414 to center of conc. pad. Accepted corner as best perpetuation of County Surveyors corner. Measured 1706.19' to M-12 (T1N, R1W) See back for further measurements.

C. Description of monument for corner and accessories established to perpetuate locating the position of the corner:

Found Raised 20' diameter concrete pad, screwed 2 1/2" aluminum remon. cap #28414 to center, witnessed by:

Found 12" diameter concrete monument S85°W 50.03'

Found 12" diameter concrete monument South 49.94'

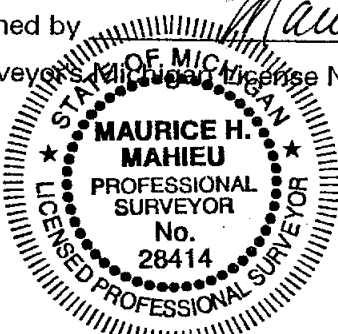
Found overgrown Nail East side 9" Poplar and Set Nail and Tag #28414 above N 15° W 17.47'

Found overgrown Nail SW side 18" Poplar and Set Nail and Tag #28414 above N 45° W 16.08'

Signed by

Surveyor's License No. 28414

Date 10-03-03

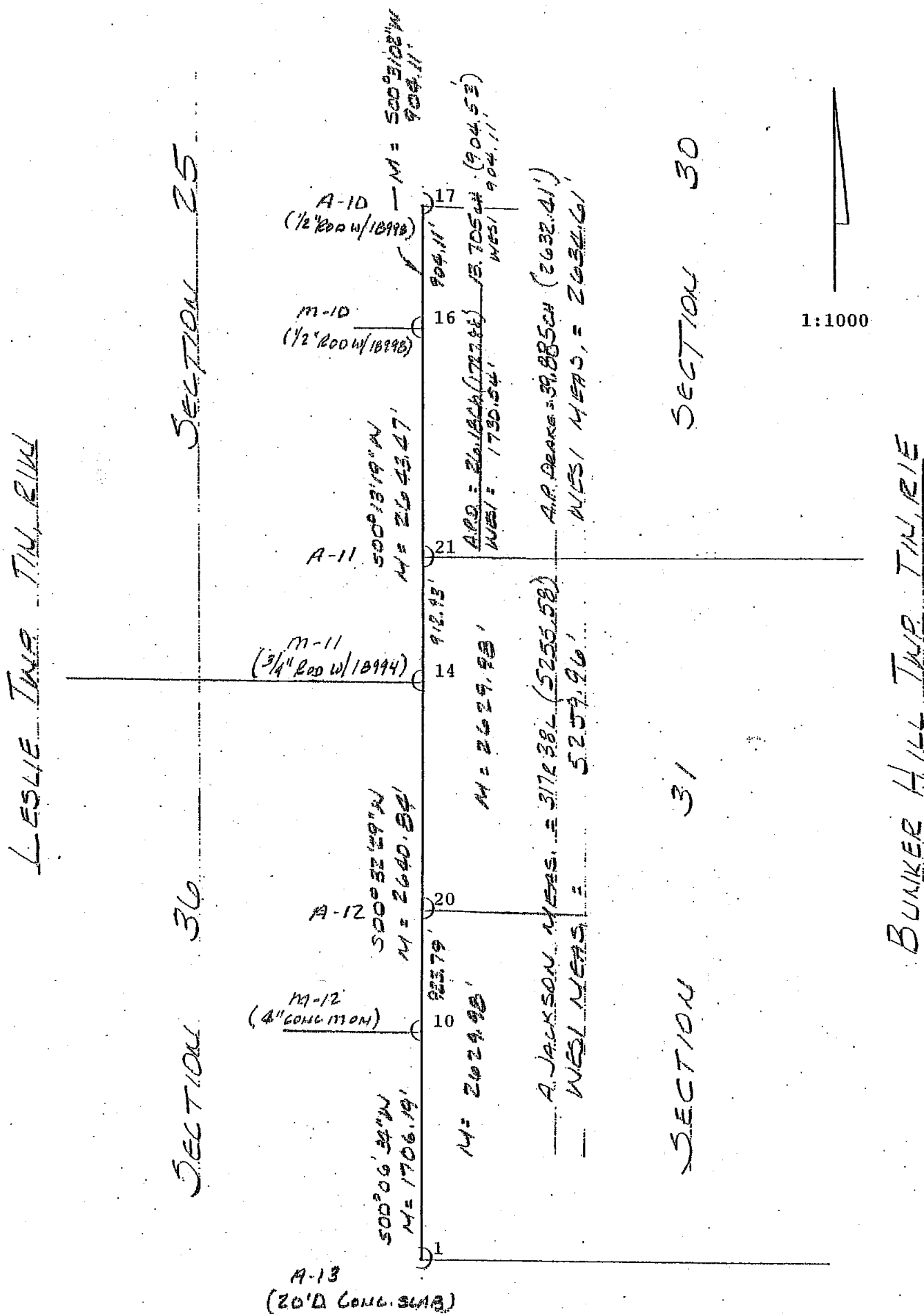


FORM APPROVED BY MICHIGAN STATE BOARD OF PROFESSIONAL SURVEYORS, JAN. 28, 1971
REVISED MAY 14, 1975

REVISED JAN., 1983
REVISED OCT., 1995

P.A. 345 INGHAM COUNTY
PEER APPROVED 8/5/2003 MC

- 2003-096811
Page: 2 of 2
10/31/2003 08:12A



LAND CORNER RECORDATION CERTIFICATE
Filing Requirement of Act 74, Mich. P.A. 1970

For corners in BUNKERHILL TOWNSHIP

INGHAM COUNTY

Located In:

Corner Code #

1. Public Land Survey

T 1N R 1E

C-11

2. Property Controlling
in Section

S T R

3. Miscellaneous
Property in Sec.

S T R

Paula Johnson
INGHAM COUNTY
REGISTER OF DEEDS
OFFICIAL SEAL



L-11 P-65

CRNR 17.00

2003-096816



2003-096816
Page: 1 of 2

10/31/2003 08:12A

Register of Deeds Stamp & File Number

4. Lot No. , Recorded Plat

5. Private Claims

I, Maurice H. Mahieu, in a field survey on May 22, 2003, do hereby state that under requirements of P.A. 74, Michigan P.A. of 1970, the corner points mentioned in lines 1 and 2 above were in conformance with regulations and rules therefore as required in the current manual of survey instructions of the United States Department of the Interior, Bureau of Land Management or by a decree of a Court of Law and/or that the corner points mentioned in lines 3, 4 and 5 above were in conformance with the rules of the Michigan Board of Land Surveyors or by a Decree of a Court of Law; established, re-established, monumented, recovered, found as expressed below:

NOTE: Not more than 2 corners, all in the same town and range, may be recorded on this certificate.

A. Description of original monument and accessories and/or subsequent restoration:

- Original monument set by J. Wampler January 30, 1826; 80.00 chains set a corner post at the corner of Section 29, 30, 31 and 32; Hickory 15 S 50° W 29; Elm 16 S 72° E 21 1/2.
- County Surveyor A. Jackson in Liber 3, Page 70 on August 7, 1856 performed survey and witnessed C-11 by Hickory 16 S 50° W 29 and Elm 16 S 70° E 21 12.
- County Surveyor R. J. Robb on April 20, 1911 in Book 2, Page 270 indicates corner as "Dug for NW Corner, Sec. 32 (NE Sec. 31) and found old stake hole. Set iron for corner....." No Witnesses given.

(Continued On Back)

B. Description of corner evidence found and/or method applied in restoring or reestablishing corner:

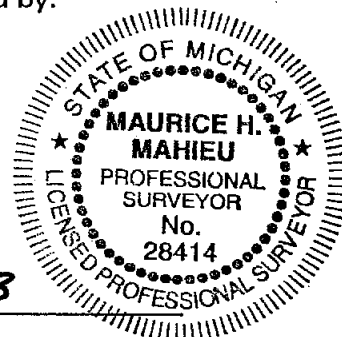
Found small railroad spike in monument box. Removed spike and dug down 1.5 feet. Found no other evidence. Set 3/4" x 24" smooth form pin with cap #PA 345, PS #28414 in monument box in centerline of Meridian Road at location of spike. Found no other evidence to dispute location of spike. Spike is best position for perpetuation of corner.

C. Description of monument for corner and accessories established to perpetuate locating the position of the corner:

3/4" x 24" smooth form pin with aluminum cap stamped PA 345, PS #28414, witnessed by:
Found Nail and Tag #25832 (L. Bryan) East side 24" Oak S 25° W 77.87 feet
Found Nail and Tag #25832 (L. Bryan) West side 66" Oak S30° E 49.15 feet
Found Nail and Tag #18994 South side Fence Post, West 31.39 feet
Found Nail and Tag #25832 North side Fence Post N 85° W 31.93 feet
Found Nail and Tag #25832 NE side 10" Oak N 60° W 30.82 feet
Found Nail and Tag #25832 North side 36" Oak, East 50.85 feet
Found Iron Axle, East 29.76 feet

Signed by Maurice H. Mahieu
Surveyor's Michigan License No. 28414

Date 7-03-03

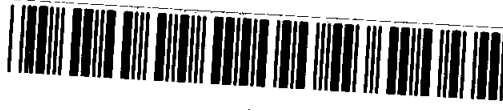


FORM APPROVED BY MICHIGAN STATE BOARD OF PROFESSIONAL SURVEYORS, JAN. 28, 1971
REVISED MAY 14, 1975

REVISED JAN., 1983
REVISED OCT., 1995

P.A. 345 INGHAM COUNTY
PEER APPROVED 6/17/2003 RL

4. An Act 74 LCRC by D. Scott PS #12029 recorded in Liber 3, Page 151, July 11, 1974 found patched 4' square hole in black top with 1/2" iron rod in center NE Corner Sec. 31, T1N, R1E, Witnessed by: Fence Corner Post N 88° W 31.00'; 7" Black Oak S 26° W 77.88'; Iron Axle East 30.00 feet; 42" Black Oak S 25° E 50.84 feet; 22" Black Oak S 78° E 50.36 feet.
5. An Act 132 survey by D. Scott PS #12029 recorded in Liber 2, Page 94, NE Corner of Section 31, T1N, R1E, Found 1/2" iron rod. N 88° W 31.00' Fence Corner Post; East 30.00' Iron Axle; S 26° W 77.88' 7" Black Oak; S 25° E 50.84' 42" Black Oak; S 78° E 50.36' 22" Black Oak. Measured 2,627.02 feet to C-12.
6. An Act 132 survey in Liber 6, Page 535 on November 28, 1990 by Ron Helsel PS #18994 notes Liber 3, Page 157 (A-4).
7. An Act 132 survey by Ron Helsel PS #18994 recorded in Liber 7, Page 145 on April 8, 1994 Found 1/2" iron rod in monument box in centerline of Meridian Road on East-West fence line. Witnessed by: 18" Black Oak S 26° W 78.00'; 60" Black Oak S 25° E 48.63'; 30" Black Oak S 85° E 50.50'; Found iron axle East 29.83'; Found fence corner post N 88° W 31.47'. Measured 2,627.10 feet.
8. An Act 132 survey by M. Mahieu PS #28414 on May 29, 1996 in Liber 7, Page 798. Witnesses corner same as A-4. Measured 2,626.95 feet to C-12.



2003-096816

Page: 2 of 2

10/31/2003 08:12A

LAND CORNER RECORDATION CERTIFICATE
Filing Requirement of Act 74, Mich. P.A. 1970

For corners in BUNKERHILL TOWNSHIP

INGHAM COUNTY

Located In:

Corner Code #

1. Public Land Survey

T 1 N R 1 E

C-12

T R
T R
T R
S T R
S T R
S T R
S T R

Paula Johnson
INGHAM COUNTY
REGISTER OF DEEDS
OFFICIAL SEAL



L-11 P-63

CRNR 17.00

2003-096815

2003-096815

Page: 1 of 2

10/31/2003 08:12A

Register of Deeds Stamp & File Number

2. Property Controlling
in Section

3. Miscellaneous
Property in Sec.

4. Lot No. _____, Recorded Plat _____

5. Private Claims _____

I, Maurice H. Mahieu, in a field survey on May 22, 2003, do hereby state that under requirements of P.A. 74, Michigan P.A. of 1970, the corner points mentioned in lines 1 and 2 above were in conformance with regulations and rules therefore as required in the current manual of survey instructions of the United States Department of the Interior, Bureau of Land Management or by a decree of a Court of Law and/or that the corner points mentioned in lines 3, 4 and 5 above were in conformance with the rules of the Michigan Board of Land Surveyors or by a Decree of a Court of Law; established, re-established, monumented, recovered, found as expressed below:

NOTE: Not more than 2 corners, all in the same town and range, may be recorded on this certificate.

	A	B	C	D	E	F	G	H	I	J	K	L	M
1													
2	6		5		4		3		2		1		
3													
4	7		8		9		10		11		12		
5													
6	18		17		16		15		14		13		
7													
8	19		20		21		22		23		24		
9													
10	30		29		28		27		26		25		
11													
12	31		32		33		34		35		36		
13													

A. Description of original monument and accessories and/or subsequent restoration:

- Original monument set by J. Wampler January 30, 1826; North between Sec 31 & 32 40.00 chains, Set 1/2 mile post. WO 16 N 35 1/2 W 41; DO 17 N 65 E 49.
- County Surveyor A. Jackson performed survey of Section 31 in August 7, 1856 in Book 3, Page 70 but did not set or use C-12.
- An Act 74 by D. Scott PS #12029 recorded in Liber 3, Page 151, July 11, 1974 found patched 4' square hole in black-top with 1/2" iron rod in center. Witnessed by: 4" Conc. Mon. U.S. G.S.B.M. N 65° E 48.97'; 6" Shag Bark Hickory N 31° W 50.75'; 28" Black Oak S 23° W 111.44'; 30" Maple N 52° E 48.46'; Telephone Anchor Pole N 32° W 35.82'.

(Continued On Back)

B. Description of corner evidence found and/or method applied in restoring or reestablishing corner:

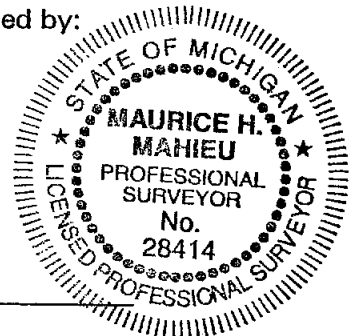
Found small railroad spike in monument box. Removed spike and dug down 2 feet. Found no further evidence. Set 3/4" x 24" smooth form pin and 2 1/2" aluminum cap stamped "PA 345", PS #28414 in monument box in centerline of Meridian and Vicary Roads. Location is best position for perpetuation of corner.

C. Description of monument for corner and accessories established to perpetuate locating the position of the corner:

3/4" x 24" Smooth Form Pin and 2 1/2" Aluminum stamped cap PA 345, PS #28414, witnessed by:
Found Nail and Tag #18998 Northeast side 18" Hickory, N 35° W 50.56 feet
Found Nail and Tag #18998 East side 36" Oak, S 13° W 111.40 feet
Found Nail and Tag #18998 South side 24" Hickory, N 69° E 62.92 feet
Set Nail and Tag #28414 North side 18" Oak, N 70° W 31.35 feet
Found USGS Bench Mark, N 60° E 49.11 feet

Signed by Maurice H. Mahieu
Surveyor's Michigan License No. 28414

Date 7-03-03



FORM APPROVED BY MICHIGAN STATE BOARD OF PROFESSIONAL SURVEYORS, JAN. 28, 1971
REVISED MAY 14, 1975

REVISED JAN., 1983
REVISED OCT., 1995

P.A. 345 INGHAM COUNTY
PEER APPROVED 6/17/2003 RL

4. An Act 132 Survey was performed by Dwayne Scott, PS #12029 in Liber 2, Page 94 on September 13, 1994. Same Witnesses as A-3. Measured 2,638.88 feet to C-13 and 2,627.02 feet to C-11.
5. An Act 132 survey was performed by Ron Helsel, PS #18994 in November 1990, in Liber 6, Page 535 referring to corner by Liber 3, Page 151. Measured 2,627.00 to C-11.
6. An Act 132 survey by Ron Helsel, PS #18994 recorded in Liber 7, Page 145 in April 8, 1994; Found 1/2" iron rod in monument box in centerline of Meridian Road and centerline of Vicary Road. Witnessed by: 28" Black Oak S 23° W 111.44'; 6" Shag Hickory N 31° W 50.46'; U.S.G.S. Benchmark N 65° E 49.12'; Set Nail and Tag #18994 in 16" Oak, N 75° W 31.42'; Measured 2,627.10' to C-11.
7. An Act 132 survey was performed by M.H. Mahieu, PS #28414 in May 29, 1996 in Liber 7, Page 798 refers to same witnesses as A-3. Measured 2,626.95' to C-11.
8. An Act 132 survey by Ron Lester, PS #18998 on July 10, 2000 in Liber 8, Page 737 states "Found 5/8" rod in monument box. Set Nail and Tag PS #18998 in East side 18" Shagbark Hickory Mag Az 328° 50.57'; Centerline of USC&GS Monument Mag Az 65° 49.00'; Set Nail and Tag PS #18998 East side 36" Oak, Mag Az 198° 111.44'; Set Nail and Tag PS #18998 South side 20" Shagbark, Mag Az 73° 62.85'; Measured 2,638.88' to C-13.



2003-096815

Page: 2 of 2

10/31/2003 08:12A

LAND CORNER RECORDATION CERTIFICATE
Filing Requirement of Act 74, Mich. P.A. 1970

For corners in BUNKERHILL TOWNSHIP

INGHAM COUNTY

Located In:

Corner Code #

1. Public Land Survey

T 1N R 1E

C-13

2. Property Controlling
in Section

S T R

3. Miscellaneous
Property in Sec.

S T R

Paula Johnson
INGHAM COUNTY
REGISTER OF DEEDS
OFFICIAL SEAL



L-11 P-61

CRNR 17.00

2003-096814



2003-096814

Page: 1 of 2

10/31/2003 08:12A

Register of Deeds Stamp & File Number

4. Lot No. , Recorded Plat

5. Private Claims

I, Maurice H. Mahieu, in a field survey on May 19, 2003, do hereby state that under requirements of P.A. 74, Michigan P.A. of 1970, the corner points mentioned in lines 1 and 2 above were in conformance with regulations and rules therefore as required in the current manual of survey instructions of the United States Department of the Interior, Bureau of Land Management or by a decree of a Court of Law and/or that the corner points mentioned in lines 3, 4 and 5 above were in conformance with the rules of the Michigan Board of Land Surveyors or by a Decree of a Court of Law; established, re-established, monumented, recovered, found as expressed below:

NOTE: Not more than 2 corners, all in the same town and range, may be recorded on this certificate.

	A	B	C	D	E	F	G	H	I	J	K	L	M
1													
2		6		5		4		3		2		1	
3													
4		7		8		9		10		11		12	
5													
6		18		17		16		15		14		13	
7													
8		19		20		21		22		23		24	
9													
10		30		29		28		27		26		25	
11													
12		31		32		33		34		35		36	
13													

A. Description of original monument and accessories and/or subsequent restoration:

- Original monument set by J. Wampler January 19, 1826; Set Post Section 31 & 32; B.O. 12° N 62° E 64 links; Do 10° N 65° W 72 links.
- County Survey A. Jackson on August 7, 1856 as recorded in Book 3, Page 70 located corner, witnessed by B. Oak 12, N 62° E 65; D.O. 10 N 65° W 72.
- An Act 74 by D. Scott PS #12029 recorded in Liber 3, Page 151 July 11, 1974, Found Boat Spike 2" below surface. Replaced with 1" x 30" iron pipe, witnessed by: 24" Black Oak S 28° W 27.29'; 25" Black Oak S 20° E 62.11'; 26" White Oak S 67° E 29.71'; 10" White Oak S 35° W 47.73'.

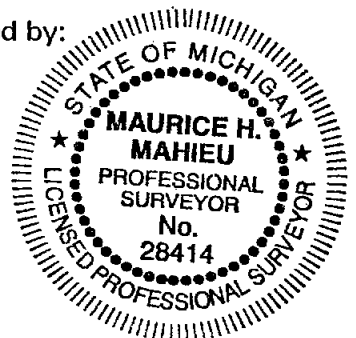
(Continued On Back)

B. Description of corner evidence found and/or method applied in restoring or reestablishing corner:

Found 1" pipe with PK Nail in center of Monument Box 1.8' East of E Meridian Road. Removed 1" x 27" pipe. Dug 27" deep Hole in Monument Box and found no further evidence. Replaced 3/4" x 24" form pin and aluminum cap stamped "PA 345", PS #28414. There is no other evidence to dispute this location. The 1" pipe is the best position for perpetuation of this corner.

C. Description of monument for corner and accessories established to perpetuate locating the position of the corner:

3/4" x 24" Smooth Form Pin and 2 1/2" Aluminum stamped cap PA 345, PS #28414, witnessed by:
Found 1/2" iron rod with cap #18998 (R. Lester) S 87° E 32.76 feet
Found Nail and Tag #18994, North side 36" Oak S 80° E 29.28 feet
Found Nail and Tag #18994, West side 36" Oak S 22° E 60.71 feet
Found 1" pipe and cap #12029, S 34° W 73.44 feet
Found Nail and Tag grown over in North side 36" Oak, S 87° W 26.87 feet
Set Nail and Tag #28414 below this tag @ same distance
Found 1" pipe and cap #12029, N 18° W 73.94 feet



Signed by Maurice H. Mahieu
Surveyor's Michigan License No. 28414

Date 7-03-03

FORM APPROVED BY MICHIGAN STATE BOARD OF PROFESSIONAL SURVEYORS, JAN. 28, 1971
REVISED MAY 14, 1975

REVISED JAN., 1983
REVISED OCT., 1995

P.A. 345 INGHAM COUNTY
PEER APPROVED 6/17/2003 RL

4. An Act 132 survey by Dwayne Scott, PS #12029 as recorded in Liber 2, Page 94 dated September 13, 1974 is a survey of the Meridian Baseline State Historic Site. Witnesses same as A-3. Measured 2,638.88 feet to C12 and 2,396.92 feet to A-13. Notes 2,323.00 feet as GLO Distance to A-13.
5. An Act 132 survey by Ron Helsel PS #18994 recorded in Liber 7, Page 145 on April 8, 1994. Found 1" iron pipe in monument box 2'± East of centerline Meridian Road. Set Nail and Tag #18994 24" Black Oak, S 82° W 27.02'; Nail and Tag #18994 26" White Oak S 67° E 29.36'; Nail and Tag #18994 25" Black Oak S 20° E 60.73'; Nail and Tag #18994 10" White Oak S 35° W 47.25'; Measured 2,638.86 feet to C-12.
6. An Act 132 survey by Ron Lester, PS #18998 on July 10, 2000 in Liber 8, Page 737 as a 1" pipe in Monument Box. "Set galvanized nail and 1 1/2" aluminum tag stamped PS #18998. Witnesses in South side 40" Oak Mag. Az 86° 38.95'. Found Nail and Tag #18994 North side 36" Oak, Mag Az 113° 29.35'; Found Nail and Tag #18994 North side 36" Oak Mag Az 257° 26.94'; Found Nail and Tag #18994 West side 36" Oak Mag. Az 157° 60.78'.



2003-096814

Page: 2 of 2

10/31/2003 08:12A