

E 1/4 Corner of Section 11
W 1/4 Corner of Section 12
T38N R2W

LAND CORNER RECORDATION CERTIFICATE

FILING REQUIREMENT OF ACT 74, MICH. P.A. 1970

LIBR 11 33

FILED

JUL 13 4 25 PM '71

REGISTER OF DEEDS
Miss Bill Humphrey
INGHAM COUNTY, MICH.

REGISTER OF DEEDS STAMP AND
FILING NUMBER

FOR CORNERS OF: LOCATED IN: CORNER CODE NUMBER

1. PUBLIC LAND SURVEY 11 T. 3 N. R. 2 W. 4 - K

2. PROPERTY CONTROLLING IN SECTION T. N. R. E. W.

3. MISCELLANEOUS PROPERTY IN SECTION T. N. R. E. W.

4. LOT NO. RECORDED PLAT

5. PRIVATE CLAIMS

I, Fred N. White do hereby certify that under requirements of P.A. 74, Michigan P.A. of 1970, the corner points mentioned in lines 1 and 2 above (identified with circles on index code diagram - over) were, in a field survey on 6-14 19 71, established, re-established, monumented, re-monumented, recovered or restored as expressed below and in conformance with regulations and rules therefore as required in the current manual of survey instructions of the United States Department of the Interior, Bureau of Land Management or by a decree of a court of law. Furthermore, that the corner points mentioned in lines 3, 4 and 5 above were, in a field survey on 19, found, recovered, restored, established or re-established as expressed below and in conformance with the rules of the Michigan State Board of Registration for Land Surveyors or, by a Decree of a Court of law:

A. Description of original monument and accessories and/or subsequent restoration:

Set 1/4 Section Post
24" Sugar N66°E 21 Links
4" Ironwood S18°W 12 Links

B. Description of corner evidence found and/or method applied in restoring or re-establishing corner:

Found 1/2" Spike Bolt in centerline of Dell Rd. and Pinetree Rd.
Verified from recorded plat of Pine Dell.

C. Description of monument for corner and accessories established to perpetuate locating the position of the corner:

1/2" Spike Bolt
14" Walnut N60°03'E 51.70 feet
Telephone Pole S30°32'W 48.70 feet
Telephone Pole N29°48'W 50.83 feet

SIGNED BY Fred N. White

DATE July 1, 1971

SURVEYOR'S MICHIGAN REGISTRATION NO. 12034

(SEAL)

FOR STATE AND UNITED STATES AGENCIES:

SIGNED BY

CHIEF OF SURVEY PARTY

DATE

APPROVED AND SIGNED BY

MICHIGAN REGISTERED LAND SURVEYOR

DATE

(SEAL)

SURVEYOR'S MICHIGAN REGISTRATION NO.

Form No. MLM735
© BLEDAY BROS. & CO., KALAMAZOO, MICH.

FORM APPROVED BY MICHIGAN STATE BOARD OF REGISTRATION, JAN. 26, 1971
DISTRIBUTED BY MICHIGAN SOCIETY OF REGISTERED LAND SURVEYORS

LAND CORNER RECORDATION CERTIFICATE

FILING REQUIREMENT OF ACT 74, MICH. P.A. 1970

NW corner of Section 13, T3N, R2W, Delhi Twp.
Ingham County

LIBER 1 PG 277

FOR CORNERS OF:-	LOCATED IN:-	CORNER CODE NUMBER
1. PUBLIC LAND SURVEY	T. 3N N. S. R. 2W E. W.	K-5
2. PROPERTY CONTROLLING IN SECTION	T. N. S. R. E. W.	
3. MISCELLANEOUS PROPERTY IN SECTION	T. N. S. R. E. W.	
4. LOT NO.	RECORDED PLAT	
5. PRIVATE CLAIMS		

FILED

NOV 30 4 52 PM '71

REGISTER OF DEEDS
Mia G. Humphrey
INGHAM COUNTY, MICH.

REGISTER OF DEEDS STAMP AND
FILING NUMBER

I, James E. Stephens do hereby certify that under requirements of P.A. 74, Michigan P.A. of 1970, the corner points mentioned in lines 1 and 2 above (identified with circles on index code diagram—over) were, in a field survey on August 30, 1971, established, re-established, monumented, re-monumented, recovered or restored as expressed below and in conformance with regulations and rules therefore as required in the current manual of survey instructions of the United States Department of the Interior, Bureau of Land Management or by a decree of a court of law. Furthermore, that the corner points mentioned in lines 3, 4 and 5 above were, in a field survey on 19, found, recovered, restored, established or re-established as expressed below and in conformance with the rules of the Michigan State Board of Registration for Land Surveyors or, by a Decree of a Court of law:

A. Description of original monument and accessories and/or subsequent restoration:

The original monument not found.

B. Description of corner evidence found and/or method applied in restoring or re-establishing corner:

A 5/8 inch iron rod was found in the centerline of the two section line roads (Pine Tree Road and Willoughby Road)

C. Description of monument for corner and accessories established to perpetuate locating the position of the corner:

The 5/8 inch rod found was left in position with the following witnesses.
Survey tag in a utility pole N18°17'W 75.10 feet.
Survey tag in a 12 inch Wild Cherry N70°12'W 65.6 feet.
Survey tag in a utility pole S30°19'W 53.02 feet.
The bearing of section line east of the corner is S88°30'E
The bearing of section line south of the corner is S1°30'40"W

SIGNED BY James E. Stephens
SURVEYOR'S MICHIGAN REGISTRATION NO. 16053

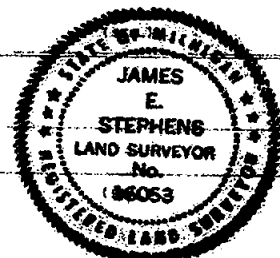
DATE September 1, 1971

FOR STATE AND UNITED STATES AGENCIES:

SIGNED BY _____ CHIEF OF SURVEY PARTY
APPROVED AND SIGNED BY _____ MICHIGAN REGISTERED LAND SURVEYOR

DATE

DATE



SURVEYOR'S MICHIGAN REGISTRATION NO.

LAND CORNER RECORDATION CERTIFICATE

FILING REQUIREMENT OF ACT 74, MICH. P.A. 1970

N 1/4 corner of section 13, T3N, R2W, Delhi Twp.
Ingham County

1 PG 279

FOR CORNERS OF--	LOCATED IN--	CORNER CODE NUMBER
1. PUBLIC LAND SURVEY	T. <u>3N</u> N. S. R. <u>2W</u> E. W.	<u>1-5</u>
2. PROPERTY CONTROLLING IN SECTION	T. _____ N. S. R. _____ E. W.	_____
3. MISCELLANEOUS PROPERTY IN SECTION	T. _____ N. S. R. _____ E. W.	_____
4. LOT NO. _____, RECORDED PLAT _____		
5. PRIVATE CLAIMS _____		

FILED

Nov 30 4 52 PM '71

REGISTER OF DEEDS
Mia B. Thompson
INGHAM COUNTY, MICH.

REGISTER OF DEEDS STAMP AND FILING NUMBER

I, James E. Stephens do hereby certify that under requirements of P.A. 74, Michigan P.A. of 1970, the corner points mentioned in lines 1 and 2 above (identified with circles on index code diagram - over) were, in a field survey on August 30, 1971, established, re-established, monumented, re-monumented, recovered or restored as expressed below and in conformance with regulations and rules therefore as required in the current manual of survey instructions of the United States Department of the Interior, Bureau of Land Management or by a decree of a court of law. Furthermore, that the corner points mentioned in lines 3, 4 and 5 above were, in a field survey on 19, found, recovered, restored, established or re-established as expressed below and in conformance with the rules of the Michigan State Board of Registration for Land Surveyors or, by a Decree of a Court of law:

A. Description of original monument and accessories and/or subsequent restoration:

The original monument not found,

B. Description of corner evidence found and/or method applied in restoring or re-establishing corner:

A railroad spike was found in the centerline of the section line road (Willoughby Road) and on a projection of an old farm fence to the south.

C. Description of monument for corner and accessories established to perpetuate locating the position of the corner:

The railroad spike found at the N 1/4 corner was left in position with the following witnesses.

Survey tag in a 18 inch Walnut S55°10'W 46.45 feet.
Survey tag in a 30 inch Walnut S11°22'W 27.95 feet.
Survey tag in a utility pole S38°04'E 47.04 feet.
The bearing of the sectionline west of the corner is N88°30'W

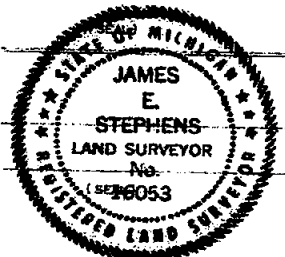
SIGNED BY James E. Stephens
SURVEYOR'S MICHIGAN REGISTRATION NO. 16053

DATE September 1, 1971

FOR STATE AND UNITED STATES AGENCIES:

SIGNED BY _____ CHIEF OF SURVEY PARTY
APPROVED AND SIGNED BY _____ MICHIGAN REGISTERED LAND SURVEYOR

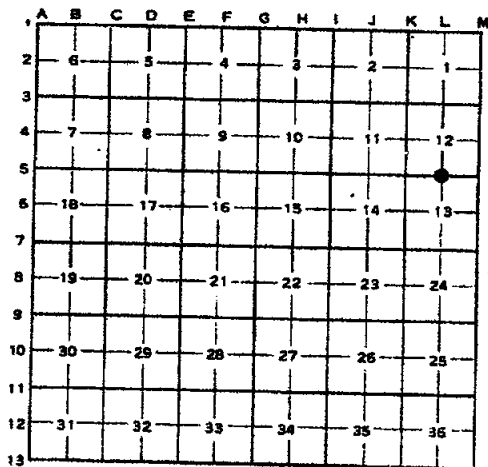
DATE _____
DATE _____



SURVEYOR'S MICHIGAN REGISTRATION NO.

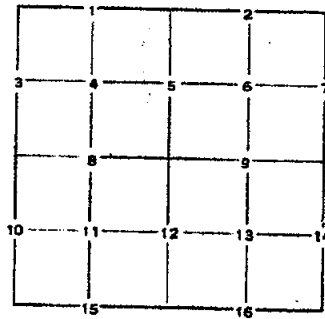
CORNER NUMBERING CODE DIAGRAMS FOR IDENTIFYING LAND CORNER RECORDATIONS AND INDEXING

FOR PUBLIC LAND SURVEY CORNERS IN THE
T. 3N, R. 2W (MENTIONED OVER)



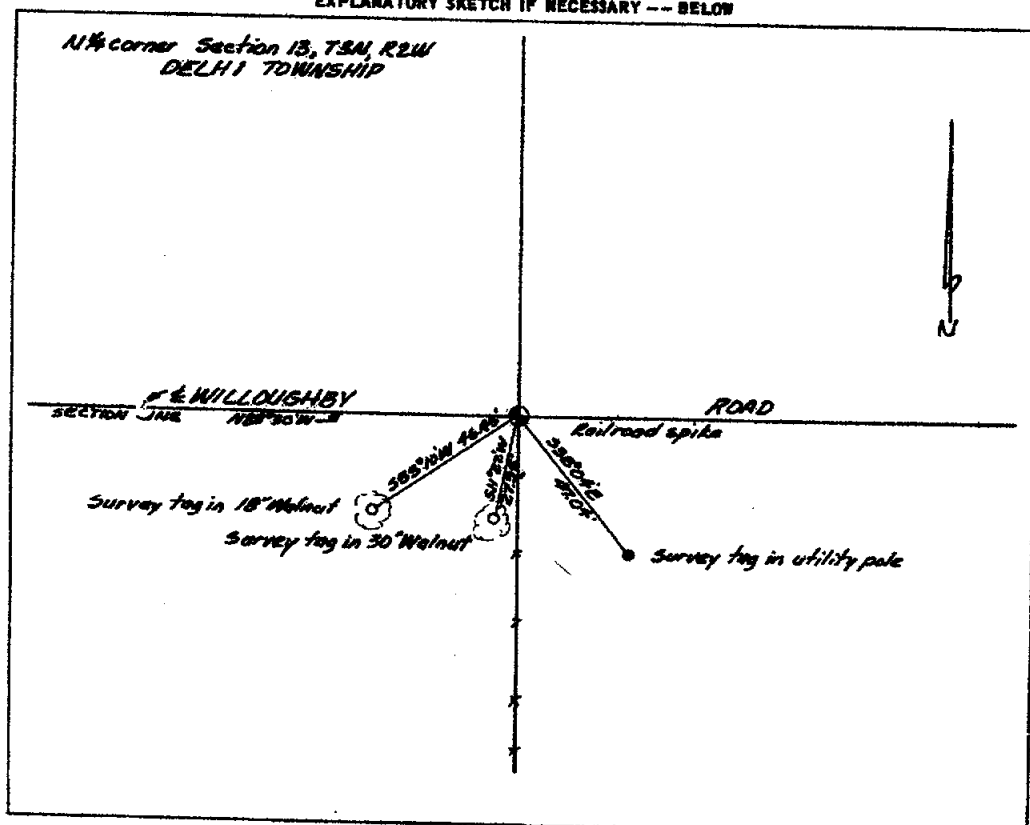
Apply letter prefix for corner points encircled above for identifying corner recordation numbers over.

FOR PROPERTY CONTROLLING AND MISC.
PROPERTY CORNERS WITHIN THE SECTION
(MENTIONED OVER AND EXCLUDE LOT CORNER)



1. Above coded numbers are positioned on 1/16 fractional lines of the section.
2. Township corner code numbers shall be applied to corners of above typical section not numbered.
3. Miscellaneous property corners within a section, located at points other than numbered above, shall be referenced to at least two of above corner code numbers.
4. Private claim corners to be tied to rectangular land corners if possible - sketch required below.

EXPLANATORY SKETCH IF NECESSARY -- BELOW



INGHAM COUNTY
NE CORNER, Section 14, T3N, R2W
LAND CORNER RECORDATION CERTIFICATE
FILING REQUIREMENT OF ACT 74, MICH. P.A. 1970

FOR CORNERS OF--	Sec.	LOCATED IN--	CORNER CODE NUMBER
1. PUBLIC LAND SURVEY	14	T. 3 N. R. 2 W.	K-5
2. PROPERTY CONTROLLING IN SECTION		T. N. R. E.	
3. MISCELLANEOUS PROPERTY IN SECTION		T. N. R. E.	
4. LOT NO. _____, RECORDED PLAT _____			
5. PRIVATE CLAIMS _____			

LIBR 18 283

FILED

Dec 3 3 15 PM '71

REGISTER OF DEEDS
Mia Bill Humphrey
INGHAM COUNTY, MICH.

REGISTER OF DEEDS STAMP AND
FILING NUMBER

I, Ronnie M. Lester do hereby certify that under requirements of P.A. 74, Michigan P.A. of 1970, the corner points mentioned in lines 1 and 2 above (identified with circles on index code diagram--over) were, in a field survey on November 17 1971, established, re-established, monumented, re-monumented, recovered or restored as expressed below and in conformance with regulations and rules therefore as required in the current manual of survey instructions of the United States Department of the Interior, Bureau of Land Management or by a decree of a court of law. Furthermore, that the corner points mentioned in lines 3, 4 and 5 above were, in a field survey on November 17 1971 found, recovered, restored, established or re-established as expressed below and in conformance with the rules of the Michigan State Board of Registration for Land Surveyors or, by a Decree of a Court of law:

A. Description of original monument and accessories and/or subsequent restoration:

Original monument & accessories obliterated.

B. Description of corner evidence found and/or method applied in restoring or re-establishing corner:

Ingham County Road Commission Records
1" iron
power pole S 30°30'W 53.22'
12" hickory N63°50'W 45.49'
power pole N 18°30'W 76.55'

C. Description of monument for corner and accessories established to perpetuate locating the position of the corner:

Found 1" bar in centerline intersection of Willoughby and Pine Tree Road

Nail & Tag South side power pole NNE, 76.15'
Nail & Tag East side power pole SW, 52.98'
"x" in top of concrete corner post, NE, 35.41'

SIGNED BY Ronnie M. Lester

DATE Nov 30, 1971

SURVEYOR'S MICHIGAN REGISTRATION NO. 18998

FOR STATE AND UNITED STATES AGENCIES:

SIGNED BY

CHIEF OF SURVEY PARTY

DATE

APPROVED AND SIGNED BY

MICHIGAN REGISTERED LAND SURVEYOR

DATE

SURVEYOR'S MICHIGAN REGISTRATION NO.

Form No. ML 6736
COURTNEY BROS. & CO., KALAMAZOO, MICH.

FORM APPROVED BY MICHIGAN STATE BOARD OF REGISTRATION, JAN. 26, 1971
DISTRIBUTED BY MICHIGAN SOCIETY OF REGISTERED LAND SURVEYORS

LAND CORNER RECORDATION CERTIFICATE

FILING REQUIREMENT OF ACT 74, MICH. P.A. 1970
NE. CORNER SECTION 11, T3N, R2N, DELHI TWP.
INGHAM COUNTY

LIBER 2 PG 181

FOR CORNERS OF—	LOCATED IN—	CORNER CODE NUMBER
1. PUBLIC LAND SURVEY	T. 3 N. R. 2 W.	K-3
2. PROPERTY CONTROLLING IN SECTION	T. N. S. R. E. W.	
3. MISCELLANEOUS PROPERTY IN SECTION	T. N. S. R. E. W.	
4. LOT NO. _____, RECORDED PLAT _____		
5. PRIVATE CLAIMS _____		

FILED

Nov 15 10:55 AM '72

REGISTER OF DEEDS

Carol M. Linn
INGHAM COUNTY, MICH.

REGISTER OF DEEDS STAMP AND FILING NUMBER

I, James E. Stephens do hereby certify that under requirements of P.A. 74, Michigan P.A. of 1970, the corner points mentioned in lines 1 and 2 above (identified with circles on index code diagram—over) were, in a field survey on August 5, 1972, established, re-established, monumented, re-monumented, recovered or restored as expressed below and in conformance with regulations and rules therefore as required in the current manual of survey instructions of the United States Department of the Interior, Bureau of Land Management or by a decree of a court of law. Furthermore, that the corner points mentioned in lines 3, 4 and 5 above were, in a field survey on 19, found, recovered, restored, established or re-established as expressed below and in conformance with the rules of the Michigan State Board of Registration for Land Surveyors or, by a Decree of a Court of law:

A. Description of original monument and accessories and/or subsequent restoration:
The original monument and accessories obliterated.

B. Description of corner evidence found and/or method applied in restoring or re-establishing corner:
A 3/4 inch iron pipe was found in the center line of the two section line roads (Sandhill Road and Pine Tree Road) and on a projection of an old fence west of the corner.

C. Description of monument for corner and accessories established to perpetuate locating the position of the corner:
The 3/4 inch iron pipe found at the NE. corner was left in position with the following witnesses;

Stephens tag in the SE. side of a 26 inch Maple N22°55'W 58.50 feet.
Plain tag found in the NW. side of a utility pole N61°40'E 62.60 feet.
M.S.D. tag found in the SE. side of a utility pole S24°44'W 45.45 feet.
The bearing of the section line west of the corner is N89°18'02"W.
The bearing of the section line south of the corner is S0°45'45"E.

SIGNED BY James E. Stephens DATE November 1, 1972

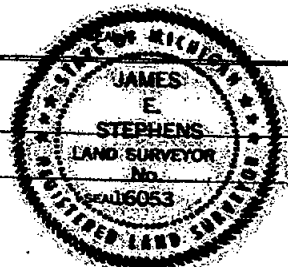
SURVEYOR'S MICHIGAN REGISTRATION NO. 1 053

FOR STATE AND UNITED STATES AGENCIES:

SIGNED BY _____ CHIEF OF SURVEY PARTY DATE _____

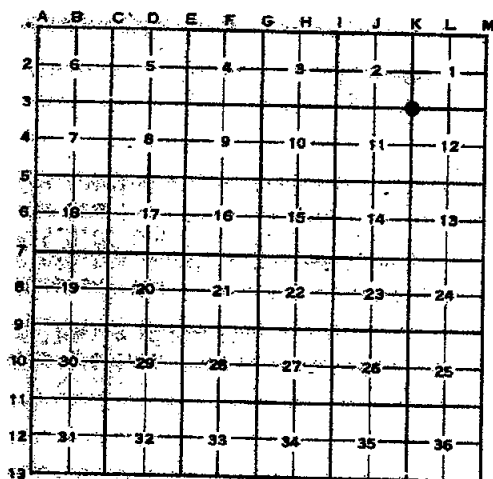
APPROVED AND SIGNED BY _____ MICHIGAN REGISTERED LAND SURVEYOR DATE _____

SURVEYOR'S MICHIGAN REGISTRATION NO. _____



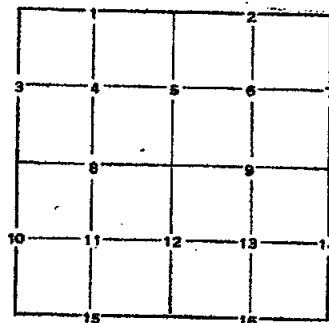
CORNER NUMBERING CODE DIAGRAMS FOR IDENTIFYING LAND CORNER RECORDATIONS AND INDEXING

FOR PUBLIC LAND SURVEY CORNERS IN THE
T. 24N., R. 24W. (MENTIONED OVER)



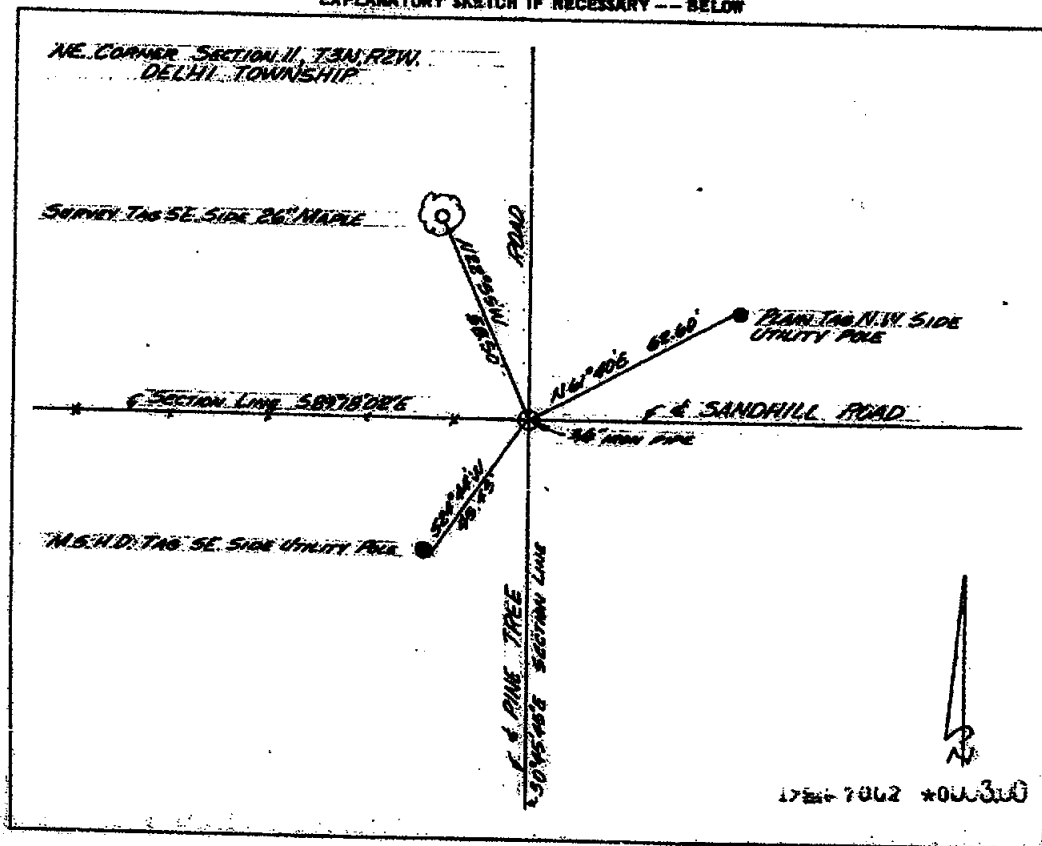
Apply letter prefix for corner points encircled above for identifying corner recordation numbers over.

FOR PROPERTY CONTROLLING AND MISC.
PROPERTY CORNERS WITHIN THE SECTION
(MENTIONED OVER AND EXCLUDE LOT CORNER)



1. Above coded numbers are positioned on 1/16 fractional lines of the section.
2. Township corner code numbers shall be applied to corners of above typical section not numbered.
3. Miscellaneous property corners within a section, located at points other than numbered above, shall be referenced to at least two of above corner code numbers.
4. Private claim corners to be tied to rectangular land corners if possible - sketch required below.

EXPLANATORY SKETCH IF NECESSARY -- BELOW



LAND CORNER RECORDATION CERTIFICATE

FILING REQUIREMENT OF ACT 74, MICH. P.A. 1970
E 1/4 CORNER SECTION 11, T3N, R2W, DELHI TWP.
INGHAM COUNTY

FOR CORNERS OF--	LOCATED IN--	CORNER CODE NUMBER
1. PUBLIC LAND SURVEY_____ T. 3 N. SW, R. 2 _____		K-4
2. PROPERTY CONTROLLING IN SECTION_____ T. _____ N. S., R. _____ E. W.		
3. MISCELLANEOUS PROPERTY IN SECTION_____ T. _____ N. S., R. _____ E. W.		
4. LOT NO. _____, RECORDED PLAT _____		
5. PRIVATE CLAIMS _____		

LIBER 2 PG 133

FILED

Nov 15 10:55 AM '72

REGISTER OF DEEDS

Paul M. Lusk
INGHAM COUNTY, MICH.

REGISTER OF DEEDS STAMP AND FILING NUMBER

I, James E. Stephens do hereby certify that under requirements of P.A. 74, Michigan P.A. of 1970, the corner points mentioned in lines 1 and 2 above (identified with circles on index code diagram—over) were, in a field survey on August 5, 1972, established, re-established, monumented, re-monumented, recovered or restored as expressed below and in conformance with regulations and rules therefore as required in the current manual of survey instructions of the United States Department of the Interior, Bureau of Land Management or by a decree of a court of law. Furthermore, that the corner points mentioned in lines 3, 4 and 5 above were, in a field survey on 19, found, recovered, restored, established or re-established as expressed below and in conformance with the rules of the Michigan State Board of Registration for Land Surveyors or, by a Decree of a Court of law:

A. Description of original monument and accessories and/or subsequent restoration:
The original monument and accessories obliterated.

B. Description of corner evidence found and/or method applied in restoring or re-establishing corner:
A 5/8 inch iron rod was found in the centerline of the 1/4 line road (Dell Road) and in the centerline of the section line road (Pine Tree Road). The rod found also checked with the plat of Pine-Dell.

C. Description of monument for corner and accessories established to perpetuate locating the position of the corner:
The 5/8 inch iron rod found at the E1/4 corner was left in position with the following witnesses;

Survey tag in the NE. side of a utility pole S32°10'W 47.87 feet.
Survey tag in the SE. side of a utility pole N43°04'W 39.80 feet.
Survey tag in the SW. side of a utility pole N62°57'E 61.15 feet.
The bearing of the section line south and north of the corner is N0°45'45"W.
The bearing of the 1/4 line west of the corner is S89°24'13"W.

SIGNED BY James E. Stephens DATE November 1, 1972

SURVEYOR'S MICHIGAN REGISTRATION NO. 16053

FOR STATE AND UNITED STATES AGENCIES:

SIGNED BY _____ DATE _____
CHIEF OF SURVEY PARTY

APPROVED AND SIGNED BY _____ DATE _____
MICHIGAN REGISTERED LAND SURVEYOR



SURVEYOR'S MICHIGAN REGISTRATION NO. _____

LAND CORNER RECORDATION CERTIFICATE

FILING REQUIREMENT OF ACT 74, MICH. P.A. 1970

North 1/4 corner and Center of Section, Section 12, T3N,
R2W, Delhi Township, Ingham County, Michigan. LREF

3 PG 621

FOR CORNERS OF:-	LOCATED IN:-	CORNER CODE NUMBER
1. PUBLIC LAND SURVEY <u>12</u> T. <u>3</u> N. R. <u>2</u> W.		L-3, L-4
2. PROPERTY CONTROLLING IN SECTION _____ T. _____ S. R. _____ E.		
3. MISCELLANEOUS PROPERTY IN SECTION _____ T. _____ S. R. _____ E.		
4. LOT NO. _____, RECORDED PLAT _____		
5. PRIVATE CLAIMS _____		

FILED

SEP 27 11 33 AM '76

REGISTER OF DEEDS
Paul M. Lewis
INGHAM COUNTY, MICH.

REGISTER OF DEEDS STAMP AND
FILING NUMBER

I, Ron Helsel do hereby certify that under requirements of P.A. 74, Michigan P.A. of 1970, the corner points mentioned in lines 1 and 2 above were, in a field survey on August 24, 1976, established, re-established, monumented, re-monumented, recovered or restored as expressed below and in conformance with regulations and rules therefore as required in the current manual of survey instructions of the United States Department of the Interior, Bureau of Land Management or by a decree of a court of law. Furthermore, that the corner points mentioned in lines 3, 4 and 5 above were, in a field survey on _____, 19____, found, recovered, restored, established or re-established as expressed below and in conformance with the rules of the Michigan State Board of Registration for Land Surveyors or, by a Decree of a Court of law:

A. Description of original monument and accessories and/or subsequent restoration:

L-3 Found Monuments & Witnesses as set by C.E. Smith, M.D.S.H. 1963

B. Description of corner evidence found and/or method applied in restoring or re-establishing corner:

L-3 - Found 3/4" Iron Pipe in centerline of Sandhill Road on fence row to North & South

L-4 - Found 5/8" Iron Bar previously used by this surveyor from County Road Commission witnesses

C. Description of monument for corner and accessories established to perpetuate locating the position of the corner:

L-3 - North 1/4 Corner, Section 12, T3N, R2W

Iron in Concrete - South 50.00 ft.
15" Maple Tree - N35°W, 61.48 ft.
20" Maple Tree - S55°W, 46.13 ft.
Clump of Maple Trees - North, 29.13 ft.

L-4 - Center of Section, Section 12, T3N, R2W

North, 37.95 ft. N & T in 12" Chestnut Tree
N15°E, 43.02 ft. N & T in 15" Walnut Tree
N35°W, 77.59 ft. SW corner of Residence No. 3740

SIGNED BY Ron Helsel DATE September 3, 1976

SURVEYOR'S MICHIGAN REGISTRATION NO. 18994

FOR STATE AND UNITED STATES AGENCIES:

SIGNED BY _____ DATE _____

APPROVED AND SIGNED BY _____ DATE _____

SURVEYOR'S MICHIGAN REGISTRATION NO. _____

FORM APPROVED BY MICHIGAN STATE BOARD OF REGISTRATION, JAN. 25, 1971
REVISED MAY 14, 1975

INGHAM COUNTY-DELIHI TWP.
LAND CORNER RECORDATION CERTIFICATE
FILING REQUIREMENT OF ACT 74, MICH. P.A. 1970

5 PG 324

FOR CORNERS OF -:	LOCATED IN -:	CORNER CODE NUMBER
1. PUBLIC LAND SURVEY _____	T. <u>3</u> N. <u>2</u> R. <u>2</u> W.	<u>M-4</u>
2. PROPERTY CONTROLLING IN SECTION _____	T. _____ N. _____ S. _____ R. _____ E. _____ W. _____	_____
3. MISCELLANEOUS PROPERTY IN SECTION _____	T. _____ N. _____ S. _____ R. _____ E. _____ W. _____	_____
4. LOT NO. _____, RECORDED PLAT _____		
5. PRIVATE CLAIMS _____		

FILED

OCT 9 1 09 PM '79

REGISTER OF DEEDS

Paula Johnson
INGHAM COUNTY, MICH.

REGISTER OF DEEDS STAMP AND FILING NUMBER

I, Ronnie M. Lester do hereby certify that under requirements of P.A. 74, Michigan P.A. of 1970, the corner points mentioned in lines 1 and 2 above were, in a field survey on July 31, 1979, established, re-established, monumented, re-monumented, recovered or restored as expressed below and in conformance with regulations and rules therefore as required in the current manual of survey instructions of the United States Department of the Interior, Bureau of Land Management or by a decree of a court of law. Furthermore, that the corner points mentioned in lines 3, 4 and 5 above were, in a field survey on _____, 19____ found, recovered, restored, established or re-established as expressed below and in conformance with the rules of the Michigan State Board of Registration for Land Surveyors or, by a Decree of a Court of law:

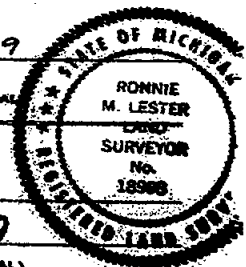
- M-4 A. Description of original monument and accessories and/or subsequent restoration:
Post set in original government survey by Misgrove Evans between Dec. 24, 1826 and Jan. 8, 1827.
Corner referred to in subsequent surveys by T.J. Brown, County Surveyor, Jan. 19, 1854 (v.C. p.33) and Dec. 27, 1856 (v.C. p.64).
Corner referred to in Recorded Subdivision Plats for Del Monte #1, 1954 (L.17, P.41), Del Monte #2, 1955 (L.19, P.32) and Gunther Lotts, 1958 (L.21, P.36).
Corner identified as a bolt in tile by Wm. Berryman, Co. Surveyor, date unknown.
Corner identified as a large nail in MDST Government Monument Witness Form 280, Oct., 1963 and in the records of the Ingham Co. Road Comm., revised grid map, 1969 and Consumer's Power Company, date unknown.
- B. Description of corner evidence found and/or method applied in restoring or re-establishing corner:
M-4
Excavated a hole 6' x 6' to an average depth of 2.0' at the intersection of the centerlines of College Road and Dell Road. Found boat spike 0.3' below road surface at the intersection of the centerlines of College Road and Dell Road. Accepted boatspike for corner as called for by MDST Form 280 and the records of the Ingham Co. Road Comm. and Consumer's Power Company. Measured north \pm 2638' to M-3 and south \pm 2635' to M-5.
Excavation conducted by Ingham County Survey and Remonumentation Project crew.
- C. Description of monument for corner and accessories established to perpetuate locating the position of the corner:
M-4
Ex Corner, Section 12, T3N-R2W
Set 4" x 36" concrete monument with $\frac{1}{2}$ " x 38" rerod and cap #18998 with concrete collar and cover in location of boatspike described above:
Nail & tag, #18998, north side power pole, SE, 77.05'
Nail & tag, #18998, south side power pole, WNW, 76.74'
Nail & tag, #18998, west side 8" Willow, NW, 50.04'
3/4" pipe, A-4 Alameda Twp., T3N-R1W, North, 52.95'

SIGNED BY Ronnie M. Lester
SURVEYOR'S MICHIGAN REGISTRATION NO. 18998

DATE Oct 3, 1979

SIGNED BY [Signature]
APPROVED AND SEALED BY [Signature]
DIRECTOR, Ingham County Survey and Remonumentation Project
SURVEYOR'S MICHIGAN REGISTRATION NO. 17624

DATE 10-3-79



1705

MAY PLACE SKETCH ON BACK OR ATTACHED SHEET

FORM APPROVED BY MICHIGAN STATE BOARD OF REGISTRATION, JAN. 28, 1971
REVISED MAY 14, 1978

INGHAM COUNTY-DELHI TWP.
LAND CORNER RECORDATION CERTIFICATE
FILING REQUIREMENT OF ACT 74, MICH. P.A. 1970

LIBER 5 16 348

FOR CORNERS OF--	LOCATED IN--	CORNER CODE NUMBER
1. PUBLIC LAND SURVEY _____ T. <u>3</u> N. <u>2</u> E. <u>2</u> W.		<u>M-5</u>
2. PROPERTY CONTROLLING IN SECTION _____ T. _____ N. _____ S. _____ R. _____ E. _____ W.		
3. MISCELLANEOUS PROPERTY IN SECTION _____ T. _____ N. _____ S. _____ R. _____ E. _____ W.		
4. LOT NO. _____, RECORDED PLAT _____		
5. PRIVATE CLAIMS _____		

FILED

Nov 7 11 01 AM '79

REGISTER OF DEEDS

Paula Johnson
INGHAM COUNTY, MICH.

REGISTER OF DEEDS STAMP AND
FILING NUMBER

I, Ronnie M. Lester, do hereby certify that under requirements of P.A. 74, Michigan P.A. of 1970, the corner points mentioned in lines 1 and 2 above were, in a field survey on July 24, 1979, established, re-established, monumented, re-monumented, recovered or restored as expressed below and in conformance with regulations and rules therefore as required in the current manual of survey instructions of the United States Department of the Interior, Bureau of Land Management or by a decree of a court of law. Furthermore, that the corner points mentioned in lines 3, 4 and 5 above were, in a field survey on _____, 19____, found, recovered, restored, established or re-established as expressed below and in conformance with the rules of the Michigan State Board of Registration for Land Surveyors or, by a Decree of a Court of law:

A. Description of original monument and accessories and/or subsequent restoration:

M-5

Post set in original government survey by Musgrove Evans dated Dec. 24, 1826 to Jan. 8, 1827. Corner referred to in a survey by T.J. Brown, Co. Surveyor, Jan. 19, 1854 (v.C, p.33). Corner identified as an old stone marked with a cross in a survey by E.A. Calkins, Co. Surveyor, July 30, 1901 (v.5, p.21). Corner identified as a stone with cross replaced with iron by Wm. Berryman, Co. Surveyor, date unknown. Corner identified as a $\frac{1}{2}$ " iron in MDSHT Government Monument Witness Form 280, Oct., 1963 and the records of the Ingham Co. Road Comm., revised grid map, 1969.

B. Description of corner evidence found and/or method applied in restoring or re-establishing corner:

M-5

Excavated a hole 5' x 5' to an average depth of 2.5' at the intersection of the centerlines of College Road and Willoughby Road west. Found $\frac{1}{2}$ " iron at road surface at the intersection of the centerlines of College Road and Willoughby Road west. Found $\frac{3}{4}$ " bar directly below $\frac{1}{2}$ " iron and a 1" pipe directly below $\frac{3}{4}$ " bar. After further excavation below 1" pipe found a 1" pointed steel rod with wooden stake beside and surrounded by yellow and red brick. Accepted 1" steel rod for corner as called for in the records attributed to Wm. Berryman, Co. Surveyor. Measured north +2635' to M-4 and south +2642' to M-6.

C. Description of monument for corner and accessories established to perpetuate locating the position of the corner:

M-5

SE Corner, Section 12, T3N-R2W
Set 4" x 36" concrete monument with $\frac{1}{2}$ " x 38" rerod and cap #18998 with concrete collar and cover in location of 1" pointed steel bar described above:
Nail & tag, #18998, east side 30' Walnut, NNE, 71.40'
Nail & tag, #18998, west side power pole, NE, 118.92'
Nail & tag, #18998, north side 10' Elm, ESE, 53.41'
Nail & tag, #18998, west side power pole, NNW, 86.42'
Pinch pipe, A-5 Alameda Twp., T3N-R1W, North, 39.25'

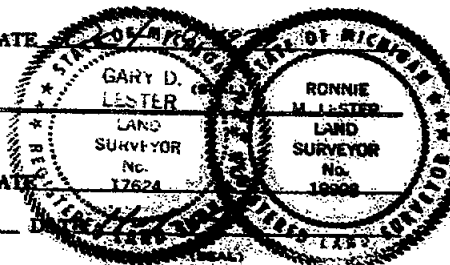
SIGNED BY Ronnie M. Lester DATE _____

SURVEYOR'S MICHIGAN REGISTRATION NO. 18998

~~RECORDS SECTION, REGISTERED OFFICE, INGHAM COUNTY, MICHIGAN~~

SIGNED BY _____ DATE _____

APPROVED AND SIGNED BY *[Signature]*
DIRECTOR, Ingham County Survey and Monumentation Project
SURVEYOR'S MICHIGAN REGISTRATION NO. 17624



1725

FORM APPROVED BY MICHIGAN STATE BOARD OF REGISTRATION, JAN. 28, 1971
REVISED MAY 14, 1978

MAY PLACE SKETCH ON BACK OR ATTACHED SHEET

INGHAM COUNTY - DELHI TWP
LAND CORNER RECORDATION CERTIFICATE
FILING REQUIREMENT OF ACT 74, MICH. P.A. 1970

FOR CORNERS OF--	LOCATED IN--	CORNER CODE NUMBER
1. PUBLIC LAND SURVEY	T. <u>3</u> N. <u>2</u> E. R. <u>2</u> W.	M-3
2. PROPERTY CONTROLLING IN SECTION	T. <u> </u> N. <u> </u> E. S. R. <u> </u> W.	
3. MISCELLANEOUS PROPERTY IN SECTION	T. <u> </u> N. <u> </u> E. S. R. <u> </u> W.	
4. LOT NO. <u> </u> , RECORDED PLAT <u> </u>		
5. PRIVATE CLAIMS <u> </u>		

1882 5 16 353

FILED

Nov 7 11 01 AM '79

REGISTER OF DEEDS

Paula Johnson

INGHAM COUNTY, MICH.

REGISTER OF DEEDS STAMP AND FILING NUMBER

I, Ronnie M. Lester, do hereby certify that under requirements of P.A. 74, Michigan P.A. of 1970, the corner points mentioned in lines 1 and 2 above were, in a field survey on July 31, 1979, established, re-established, monumented, re-monumented, recovered or restored as expressed below and in conformance with regulations and rules therefore as required in the current manual of survey instructions of the United States Department of the Interior, Bureau of Land Management or by a decree of a court of law. Furthermore, that the corner points mentioned in lines 3, 4 and 5 above were, in a field survey on , 19 , found, recovered, restored, established or re-established as expressed below and in conformance with the rules of the Michigan State Board of Registration for Land Surveyors or, by a Decree of a Court of law:

A. Description of original monument and accessories and/or subsequent restoration:
M-3

Post set in original government survey by Musgrove Evans dated between Dec. 24, 1826 and Jan. 8, 1827.

Corner referred to in subsequent surveys by T.J. Brown, Co. Surveyor, Jan. 19, 1854 (v.C, p.33) and Dec. 27, 1856 (v.C, p.64)

Corner re-established as a post by T.J. Brown, Co. Surveyor, April 6, 1865 (v.3, p.18).
Corner re-established as a post and stone by T.J. Brown, Co. Surveyor, Nov. 28, 1870 (v.3, p.57).

Continued on back

B. Description of corner evidence found and/or method applied in restoring or re-establishing corner:
M-3

During investigation of corner found $\frac{1}{2}$ " iron at road surface on the centerline of College Road. When $\frac{1}{2}$ " iron rod was removed found it to have been set inside $\frac{3}{4}$ " pipe, also found wooden stake with pottery directly beneath $\frac{3}{4}$ " pipe. Measured north + 66.4' to A-3 Alaledon Twp., T3N-R1W, measurement in close accord to G.L.O. falling distance. Also measured north + 2650' to M-2 and south + 2638' to M-4. Accepted evidence found for corner.

Investigation conducted by Ingham County Survey and Remonumentation Project crew.

C. Description of monument for corner and accessories established to perpetuate locating the position of the corner:
M-3

SE Corner, Section 1, T3N-R2W

Set 4" x 36" concrete monument with $\frac{1}{2}$ " x 38" rerod and cap #18998 with concrete collar and cover in location of evidence described above:

PK nail, east slope of east bound US 127, SE, 44.67'

PK nail, west slope of east bound US 127, SW, 46.15'

PK nail, east slope of west bound US 127, NE, 74.47'

PK nail, west slope of west bound US 127, NW, 56.65'

Concrete monument, A-3 Alaledon Twp., T3N-R1W, North, 66.40'

SIGNED BY Ronnie M. Lester

DATE Oct 17, 1979

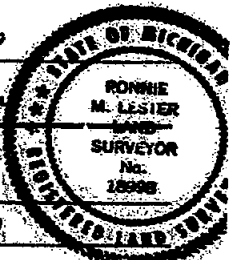
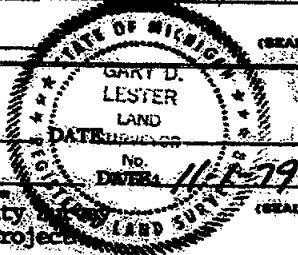
SURVEYOR'S MICHIGAN REGISTRATION NO. 18998

SIGNED BY

APPROVED AND SIGNED BY

Director, Ingham County Survey and Remonumentation Project

SURVEYOR'S MICHIGAN REGISTRATION NO. 17624



1729

FORM APPROVED BY MICHIGAN STATE BOARD OF REGISTRATION, JAN. 28, 1971
REVISED MAY 14, 1975

MAY PLACE SKETCH ON BACK OR ATTACHED SHEET

1729

LIBR 5 PG 354

A. Continued from front

M-3

Corner re-established October 24, 1961 and identified October 1963 as a $\frac{1}{2}$ " iron pipe in MDSHT Government Monument Witness Form 280.
Corner identified as a $\frac{1}{2}$ " iron pipe in the records of the Ingham County Road Commission revised grid map 1969 and Consumer's Power Company, date unknown.

7059 *0005.00 LHS

LAND CORNER RECORDATION CERTIFICATE

FILING REQUIREMENT OF ACT 74, MICH. P.A. 1970

Southwest corner, Section 1, T3N, R2W, Delhi Township, Ingham County

FOR CORNERS OF--	LOCATED IN--	CORNER CODE NUMBER
1. PUBLIC LAND SURVEY	T. <u>3</u> N. <u>2</u> E. S. <u>W.</u>	K-3
2. PROPERTY CONTROLLING IN SECTION	T. <u> </u> N. <u> </u> E. S. <u> </u> W.	
3. MISCELLANEOUS PROPERTY IN SECTION	T. <u> </u> N. <u> </u> E. S. <u> </u> W.	
4. LOT NO. <u> </u> , RECORDED PLAT <u> </u>		
5. PRIVATE CLAIMS <u> </u>		

LIBER 6 PAGE 261

FILED

FEB 4 10 13 AM '85

REGISTER OF DEEDS

James E. Stephens
INGHAM COUNTY, MICH.

REGISTER OF DEEDS STAMP AND FILING NUMBER

I, James E. Stephens, do hereby certify that under requirements of P.A. 74, Michigan P.A. of 1970, the corner points mentioned in lines 1 and 2 above were, in a field survey on JANUARY 14, 1985, established, re-established, monumented, re-monumented, recovered or restored as expressed below and in conformance with regulations and rules therefore as required in the current manual of survey instructions of the United States Department of the Interior, Bureau of Land Management or by a decree of a court of law. Furthermore, that the corner points mentioned in lines 3, 4 and 5 above were, in a field survey on , 19 , found, recovered, restored, established or re-established as expressed below and in conformance with the rules of the Michigan State Board of Registration for Land Surveyors or, by a Decree of a Court of law:

A. Description of original monument and accessories and/or subsequent restoration:

Original monument and accessories were not found.

B. Description of corner evidence found and/or method applied in restoring or re-establishing corner:

Iron pipe found as indicated in the previously recorded Certificate.

This Certificate is being recorded to up-date the corner witnesses.

C. Description of monument for corner and accessories established to perpetuate locating the position of the corner:

Iron pipe witnessed by:

Highway Dept. tag nailed to SE side of utility pole S25°W 45.48 feet.

Plain tag nailed to NW side of utility pole N70°E 62.67 feet.

Tag No. 18998 nailed to West side of 32 inch tree S20°E 102.80 feet.

Tag No. 16053 nailed to East side of 30 inch maple tree N25°W 59.09 feet.

SIGNED BY James E. Stephens DATE January 17, 1985

SURVEYOR'S MICHIGAN REGISTRATION NO. 16053

FOR STATE AND UNITED STATES AGENCIES:

SIGNED BY DATE

APPROVED AND SIGNED BY DATE

SURVEYOR'S MICHIGAN REGISTRATION NO.



2009

FORM APPROVED BY MICHIGAN STATE BOARD OF REGISTRATION, JAN. 28, 1971
REVISED MAY 14, 1975

MAY PLACE SKETCH ON BACK OR ATTACHED SHEET

LAND CORNER RECORDATION CERTIFICATE

FILING REQUIREMENT OF ACT 74, MICH. P.A. 1970

South 1/4 corner, Section 1, T3N, R2W, Delhi Twp., Ingham County

LIBER

6 PAGE 263

FOR CORNERS OF--	LOCATED IN--	CORNER CODE NUMBER
1. PUBLIC LAND SURVEY	T. 3 N. R. 2 W.	L-3
2. PROPERTY CONTROLLING IN SECTION	T. S. R. E.	
3. MISCELLANEOUS PROPERTY IN SECTION	T. S. R. E.	
4. LOT NO.	RECORDED PLAT	
5. PRIVATE CLAIMS		

FILED

FEB 4 10 14 AM '85

REGISTER OF DEEDS

James E. Stephens
INGHAM COUNTY, MICH.

REGISTER OF DEEDS STAMP AND FILING NUMBER

I, James E. Stephens, do hereby certify that under requirements of P.A. 74, Michigan P.A. of 1970, the corner points mentioned in lines 1 and 2 above were, in a field survey on January 14, 1985, established, re-established, monumented, re-monumented, recovered or restored as expressed below and in conformance with regulations and rules therefore as required in the current manual of survey instructions of the United States Department of the Interior, Bureau of Land Management or by a decree of a court of law. Furthermore, that the corner points mentioned in lines 3, 4 and 5 above were, in a field survey on 19, found, recovered, restored, established or re-established as expressed below and in conformance with the rules of the Michigan State Board of Registration for Land Surveyors or, by a Decree of a Court of law:

A. Description of original monument and accessories and/or subsequent restoration:

Original monument and accessories was not found.

B. Description of corner evidence found and/or method applied in restoring or re-establishing corner:

Iron pipe found as indicated in the Certificate recorded in Liber 3, Page 621.

This Certificate is being recorded to up-date the corner witnesses.

C. Description of monument for corner and accessories established to perpetuate locating the position of the corner:

Iron pipe witnesses by:

Tag No. 16053 nailed to West side of 24" Maple tree in cluster North 29.08 feet.

Tag No. 16053 nailed to SW side of 20" maple tree N35°W 61.38 feet.

Tag No. 16053 nailed to SE side of 24" maple tree S55°W 45.91 feet.

Iron rod in concrete monument South 49.85 feet.

SIGNED BY *James E. Stephens* DATE January 17, 1985

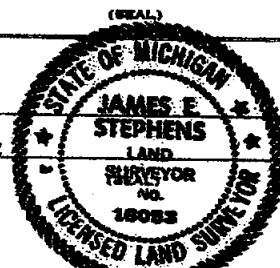
SURVEYOR'S MICHIGAN REGISTRATION NO. 16053

FOR STATE AND UNITED STATES AGENCIES:

SIGNED BY _____ DATE _____

APPROVED AND SIGNED BY _____ DATE _____

SURVEYOR'S MICHIGAN REGISTRATION NO. _____



2011

FORM APPROVED BY MICHIGAN STATE BOARD OF REGISTRATION, JAN. 28, 1971
REVISED MAY 14, 1975

MAY PLACE SKETCH ON BACK OR ATTACHED SHEET

LIBER 6 PAGE 316

FILED

Corner Code ~~24~~

 K-5

5. Private Claims

[illegible]

A. Description of original monument and accessories and/or subsequent restoration:

The original monument was not found.

B. Description of corner evidence found and/or method applied in restoring or reestablishing corner:

The 5/8 inch diameter iron rod was found in the intersection of Pine Tree Road and Willoughby Road as previously recorded.

This certificate is being recorded to up-date witness information.

C. Description of monument for corner and accessories established to perpetuate locating the position of the corner:

5/8 inch diameter iron rod witnessed by survey tags nailed to:

Utility pole NNW 79.30 feet.

14" Cherry tree NW 65.95 feet.

12" Poplar tree NE 97.75 feet.
NE corner garage house number

NE corner garage, house number 2495, SW 128.65 feet.



Signed by

Date April 6, 1987

Surveyor's Michigan License No. 16053

2063

LAND CORNER RECORDATION CERTIFICATE
Filing Requirement of Act 74, Mich. P.A. 1970

For corners in DELHI TOWNSHIP

INGHAM COUNTY
1. Public Land Survey
2. Property Controlling in Section
3. Miscellaneous Property in Sec.
4. Lot No. _____, Recorded Plat _____
5. Private Claims _____

Located in:

Corner Code #

T 3N R 2W L-1
T 3N R 2W L-3
T R
T R
T R
T R
T R
T R

B:13 P:46 2/8/07 8:49 AM Pages: 1
2007-005938 LAND CORNERS Receipt #22869
Paula Johnson, Ingham County, Michigan



I, Derek R. Hodges, in a field survey on December, 2006 do hereby certify that under requirements of P.A. 74, Michigan P.A. of 1970, the corner points mentioned in lines 1 and 2 above were in conformance with regulations and rules therefore as required in the current manual of survey instructions of the United States Department of the Interior, Bureau of Land Management or by a decree of a Court of Law and/or that the corner points mentioned in lines 3, 4 and 5 above were in conformance with the rules of the Michigan Board of Land Surveyors or by a Decree of a Court of Law; established, re-established, monumented, re-monumented, recovered, found as expressed below:

NOTE: Not more than 2 corners, all in the same town and range, may be recorded on this certificate.

	A	B	C	D	E	F	G	H	I	J	K	L	M
1													
2	6	5	4	3	2	1							
3													
4	7	8	9	10	11	12							
5													
6	18	17	16	15	14	13							
7													
8	19	20	21	22	23	24							
9													
10	30	29	28	27	26	25							
11													
12	31	32	33	34	35	36							
13													

A. Description of original monument and accessories and/or subsequent restoration:

- L-1 1984 Maurice H. Mahieu, #20414 - L.C.R.C., L. 6, P. 251 - Ingham County Records
L-3 1976 Ron Helsel, #18994 - L.C.R.C., L. 3, P. 621 - Ingham County Records

B. Description of corner evidence found and/or method applied in restoring or reestablishing corner:

- L-1 Found 1/2" rod & cap #18998 in monument box
L-3 Found 1" pipe in monument box

C. Description of monument for corner and accessories established to perpetuate locating the position of the corner:

- L-1
Found 1/2" rod & cap in monument box
N45°E 45.98' Found PK nail & tag in W. face of power pole
N05°W 46.96' SW corner of block building
N45°W 68.86' Found nail & tag in SW face of telephone pole
S40°W 60.30' Found nail & tag #18998 in NW face of power pole
S10°W 28.16' Found nail & tag #21565 in NW face of 24" tree
East 9.25' Found bolt spike in monument box @ L-13 T4N-R2W

- L-3
Found 1" pipe in monument box
N60°W 46.29' Found nail & tag #25832 in S. face of 24" maple
North 29.10' Found nail & tag #16053 in W. face of 18" stump
S40°W 45.88' Set nail & Rowe tag in SE face of 20" tree
S35°E 48.48' Set nail & Rowe tag in Wly root of 18" cottonwood

Signed by Derek R. Hodges
Surveyor's Michigan License No. 47954



Date 2/6/07

LAND CORNER RECORDATION CERTIFICATE
Filing Requirement of Act 74, Mich. P.A. 1970

For corners in DELHI TOWNSHIP

INGHAM COUNTY

1. Public Land Survey

Located In:

Corner Code #

T 3N R 2W K-3

2. Property Controlling
in Section

S

T

R

R

3. Miscellaneous
Property in Sec.

S

T

R

R

4. Lot No. _____, Recorded Plat _____

5. Private Claims _____

B:13 P:47 2/8/07 8:49 AM Pages: 1
2007-005940 LAND CORNERS Receipt #22965
Paula Johnson, Ingham County, Michigan



Register of Deeds Stamp & File Number

I, Derek R. Hodges, in a field survey on December, 2006 do hereby certify that under requirements of P.A. 74, Michigan P.A. of 1970, the corner points mentioned in lines 1 and 2 above were in conformance with regulations and rules therefore as required in the current manual of survey instructions of the United States Department of the Interior, Bureau of Land Management or by a decree of a Court of Law and/or that the corner points mentioned in lines 3, 4 and 5 above were in conformance with the rules of the Michigan Board of Land Surveyors or by a Decree of a Court of Law; established, re-established, monumented, re-monumented, recovered, found as expressed below:

NOTE: Not more than 2 corners, all in the same town and range, may be recorded on this certificate.

	A	B	C	D	E	F	G	H	I	J	K	L	M
1													
2	6	5	4	3	2	1							
3													
4	7	6	5	4	3	2	1						
5													
6	18	17	16	15	14	13							
7													
8	19	20	21	22	23	24							
9													
10	30	29	28	27	26	25							
11													
12	31	32	33	34	35	36							
13													

A. Description of original monument and accessories and/or subsequent restoration:

1996 David R. Lohr #30090 - L.C.R.C., L. 9, P. 8 - Ingham County Records

B. Description of corner evidence found and/or method applied in restoring or reestablishing corner:

Found 1" pipe in asphalt road

C. Description of monument for corner and accessories established to perpetuate locating the position of the corner:

Found 1" pipe in asphalt road

N65°E 62.50' Found nail & tag in NW face of power pole

S40°E 83.00' Found mag nail in SW face of power pole

S25°W 45.32' Found nail & MSHD in SE face of power pole

N20°W 58.72' Set nail & Rowe tag in E. face of 30" maple



Signed by Derek R. Hodges
Surveyor's Michigan License No. 47954

Date 2/6/07