

LAND CORNER RECORDATION CERTIFICATE

FILING REQUIREMENT OF ACT 74, MICH. P.A.1970

LIBER 2 PC 297

FOR CORNERS OF—:	LOCATED IN—:	CORNER CODE NUMBER
1. PUBLIC LAND SURVEY—	Sec. 27 T. 3 N. 2 R. 2 W.	G 9, G 10, H 10
2. PROPERTY CONTROLLING IN SECTION—	T. — N. — R. — E. —	
3. MISCELLANEOUS PROPERTY IN SECTION—	T. — N. — R. — E. —	
4. LOT NO. —, RECORDED PLAT —		
5. PRIVATE CLAIMS —		

FILED

JAN 8 1 10 PM '73
REGISTER OF DEEDS
Laverne J. Hendryx
INGHAM COUNTY, MICH.

REGISTER OF DEEDS STAMP AND FILING NUMBER

I, Laverne J. Hendryx do hereby certify that under requirements of P.A. 74, Michigan P.A. of 1970, the corner points mentioned in lines 1 and 2 above (identified with circles on index code diagram—over) were, in a field survey on Dec. 30 1972, established, re-established, monumented, re-monumented, recovered or restored as expressed below and in conformance with regulations and rules therefore as required in the current manual of survey instructions of the United States Department of the Interior, Bureau of Land Management or by a decree of a court of law. Furthermore, that the corner points mentioned in lines 3, 4 and 5 above were, in a field survey on _____ 19____, found, recovered, restored, established or re-established as expressed below and in conformance with the rules of the Michigan State Board of Registration for Land Surveyors or, by a Decree of a Court of law:

A. Description of original monument and accessories and/or subsequent restoration:

B. Description of corner evidence found and/or method applied in restoring or re-establishing corner:

G 9
NW Cor Sec 27
T3N R2W
found 3/4" steel rod

G 10
W 1/4 Post
Sec 27
T3N R2W
found 1 1/2" pipe

H 10
Center of
Sec 27
T3N R2W
found 1" steel bar

C. Description of monument for corner and accessories established to perpetuate locating the position of the corner:

G 9
NW Cor Sec 27
T3N R2W
Left 3/4" steel rod in place
PK nail S. Side 24" Maple
N 27° 50' E 42.50'
PK nail S. Side 10" Tel. pole
N 42° 00' 40" W 53.39'
PK nail 34" Maple
S 41° 50' W 37.25'

G 10
W 1/4 Post
Sec 27
T3N R2W
Left 1 1/2" pipe in place
PK nail S. Side 24" Walnut
N 55° 18' 40" E 41.41'
PK nail S. Side 12" Tel. pole
N 70° 09' 40" W 22.10'
PK nail 24" Oak
S 18° 57' 40" E 45.27'

H 10
Center Sec. 27
Left 1" steel bar
in place
1/2" pipe N. 33.0'
3" pipe in conc
N 208.71'
PK nail
W. 208.71'

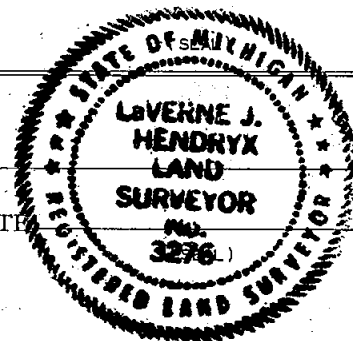
SIGNED BY Laverne J. Hendryx DATE Dec. 30, 1972

SURVEYOR'S MICHIGAN REGISTRATION NO. 3276

FOR STATE AND UNITED STATES AGENCIES:

SIGNED BY _____ DATE _____
CHIEF OF SURVEY PARTY

APPROVED AND SIGNED BY _____ DATE _____
MICHIGAN REGISTERED LAND SURVEYOR



SURVEYOR'S MICHIGAN REGISTRATION NO. _____

CORNER NUMBERING CODE DIAGRAMS FOR IDENTIFYING LAND-CORNER RECORDATIONS AND INDEXING

Sec. 27
FOR PUBLIC LAND SURVEY CORNERS IN THE
T. *34*, R. *24* (MENTIONED OVER)

	A	B	C	D	E	F	G	H	I	J	K	L	M
1													
2	6		5		4		3		2		1		
3													
4	7		8		9		10		11		12		
5													
6	18		17		16		15		14		13		
7													
8	19		20		21		22		23		24		
9													
10	30		29		28		27		26		25		
11													
12	31		32		33		34		35		36		
13													

Apply letter prefix for corner points encircled above for identifying corner recordation numbers over.

FOR PROPERTY CONTROLLING AND MISC.
PROPERTY CORNERS WITHIN THE SECTION
(MENTIONED OVER AND EXCLUDE LOT CORNER)

	1		2	
3	4	5	6	7
	8		9	
10	11	12	13	14
	15		16	

1. Above coded numbers are positioned on 1/16 fractional lines of the section.
2. Township corner code numbers shall be applied to corners of above typical section not numbered.
3. Miscellaneous property corners within a section, located at points other than numbered above, shall be referenced to at least two of above corner code numbers.
4. Private claim corners to be tied to rectangular land corners if possible - sketch required below.

EXPLANATORY SKETCH IF NECESSARY -- BELOW

LAND CORNER RECORDATION CERTIFICATE

FILING REQUIREMENT OF ACT 74, MICH. P.A.1970

N1/4 Cor. Sec. 27, T3N, R2W, Delhi Twp., Ingham County
E1/4 Cor. Sec. 27, T3N, R2W, Delhi Twp., Ingham County

FOR CORNERS OF:-	LOCATED IN:-	CORNER CODE NUMBER
1. PUBLIC LAND SURVEY Sec. 27. 3 N. R. 2 W.		H-9 I-10
2. PROPERTY CONTROLLING IN SECTION T. S. R. E. W.		
3. MISCELLANEOUS PROPERTY IN SECTION T. S. R. E. W.		
4. LOT NO. , RECORDED PLAT		
5. PRIVATE CLAIMS		

LIBER 3 PG 199

Filed

AUG 5 10 07 AM '74

REGISTER OF DEEDS

Carol M. Lewis
INGHAM COUNTY, MICH.

REGISTER OF DEEDS STAMP AND FILING NUMBER

I, Sydney G. Bokovoy do hereby certify that under requirements of P.A. 74, Michigan P.A. of 1970, the corner points mentioned in lines 1 and 2 above (identified with circles on index code diagram - over) were, in a field survey on July 30 1973, established, re-established, monumented, re-monumented, recovered or restored as expressed below and in conformance with regulations and rules therefore as required in the current manual of survey instructions of the United States Department of the Interior, Bureau of Land Management or by a decree of a court of law. Furthermore, that the corner points mentioned in lines 3, 4 and 5 above were, in a field survey on 19, found, recovered, restored, established or re-established as expressed below and in conformance with the rules of the Michigan State Board of Registration for Land Surveyors or, by a Decree of a Court of law:

A. Description of original monument and accessories and/or subsequent restoration:

- H -9 Original monument and accessories obliterated
I-10 Original monument and accessories obliterated

B. Description of corner evidence found and/or method applied in restoring or re-establishing corner:

- H -9 Found 1/2" iron rod in fence row east and west
I-10 Found 1/2" iron rod in Aurelius Road and fence row to east

C. Description of monument for corner and accessories established to perpetuate locating the position of the corner:

- H -9 N1/4 Cor. set nail and flag in 12" Walnut North 25.96'
set nail and flag in 9" Walnut N30°W 30.79'
set nail and flag in 13" Poplar N86°W 44.61'
I-10 E1/4 Cor. found nail and flag in 9" Tw Birch N15°W 96.89'
found nail and flag in 15" Walnut N80°W 37.88'
Found nail and flag in PP West 62.96'

SIGNED BY Sydney G. Bokovoy DATE May 29, 1988

SURVEYOR'S MICHIGAN REGISTRATION NO. 19828

FOR STATE AND UNITED STATES AGENCIES:

SIGNED BY _____ DATE _____

CHIEF OF SURVEY PARTY

APPROVED AND SIGNED BY _____ DATE _____

MICHIGAN REGISTERED LAND SURVEYOR

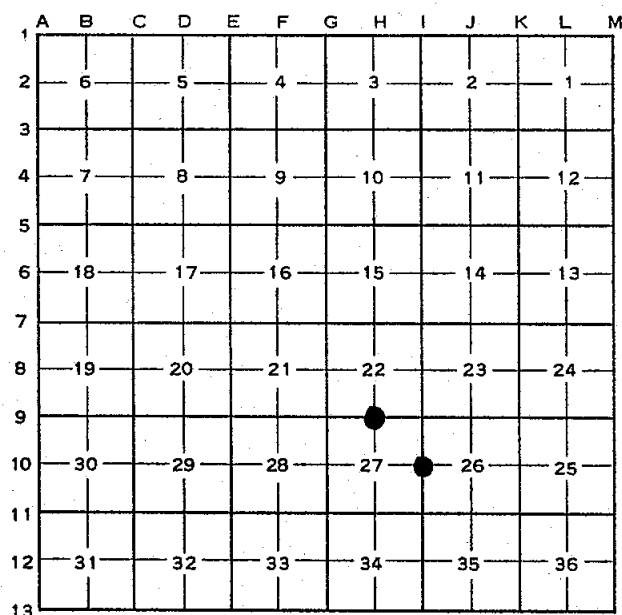
(SEAL)



SURVEYOR'S MICHIGAN REGISTRATION NO. _____

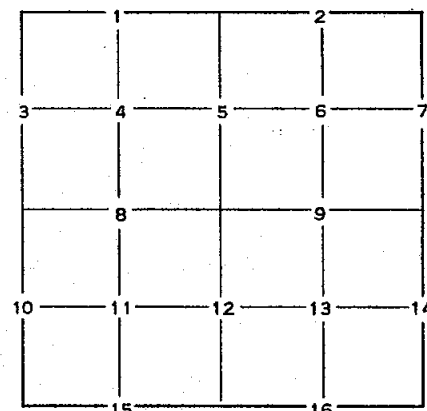
CORNER NUMBERING CODE DIAGRAMS FOR IDENTIFYING LAND CORNER RECORDATIONS AND INDEXING

FOR PUBLIC LAND SURVEY CORNERS IN THE
T **3N** , R **2W** (MENTIONED OVER)



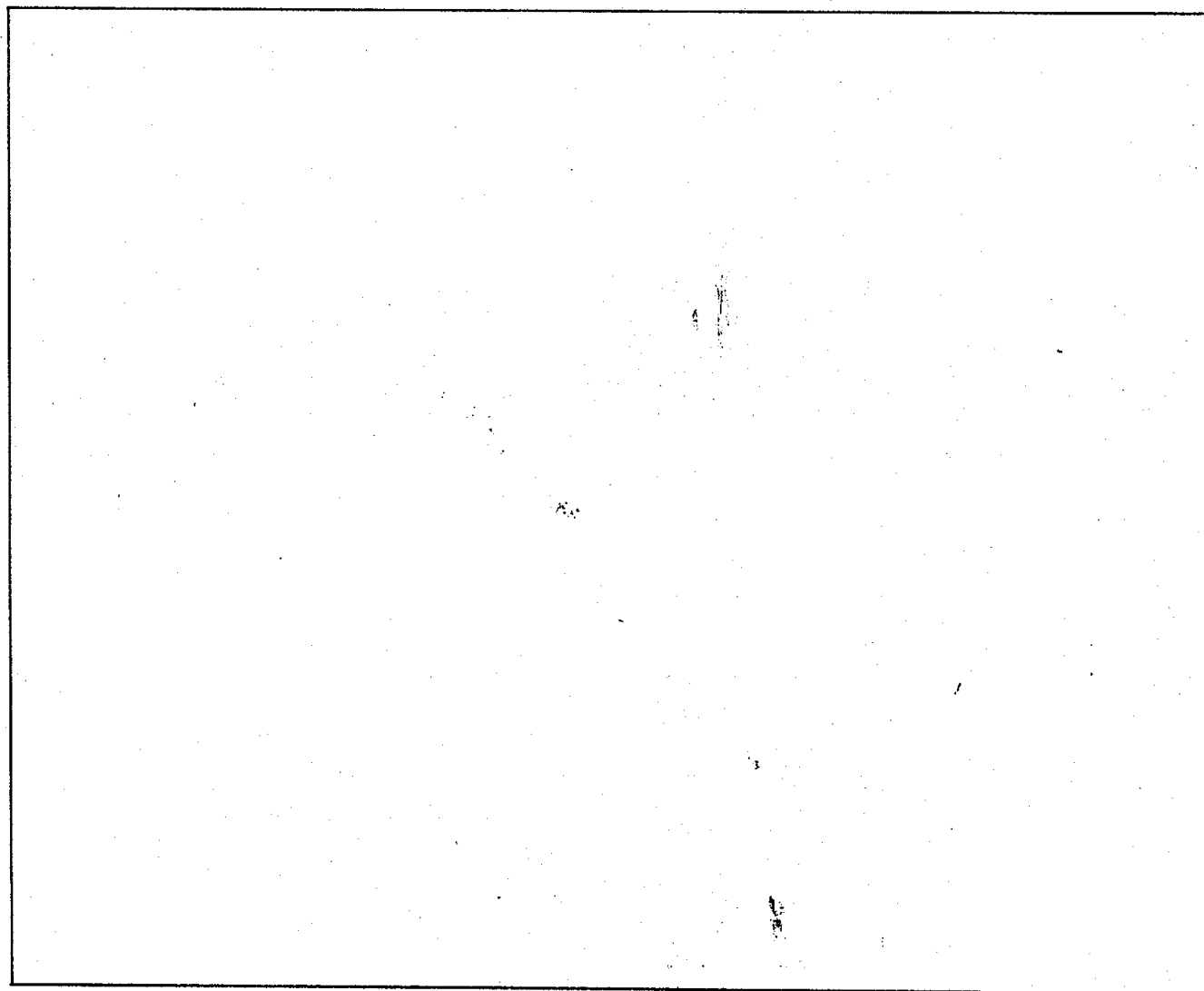
Apply letter prefix for corner points encircled above for identifying corner recordation numbers over.

FOR PROPERTY CONTROLLING AND MISC.
PROPERTY CORNERS WITHIN THE SECTION
(MENTIONED OVER AND EXCLUDE LOT CORNER)



1. Above coded numbers are positioned on 1/16 fractional lines of the section.
2. Township corner code numbers shall be applied to corners of above typical section not numbered.
3. Miscellaneous property corners within a section, located at points other than numbered above, shall be referenced to at least two of above corner code numbers.
4. Private claim corners to be tied to rectangular land corners if possible - sketch required below.

EXPLANATORY SKETCH IF NECESSARY -- BELOW



5 AUG. 74 1469 5.00 EMS

5-00

INGHAM COUNTY

LAND CORNER RECORDATION CERTIFICATE

FILING REQUIREMENT OF ACT 74, MICH. P.A.1970

FOR CORNERS OF--:	LOCATED IN--:	CORNER CODE NUMBER
1. PUBLIC LAND SURVEY_____	T. <u>3</u> N. <u>2</u> R. <u>2</u> W.	<u>I-9</u>
2. PROPERTY CONTROLLING IN SECTION_____	T. _____ N. _____ S. _____ R. _____ E. _____ W. _____	_____
3. MISCELLANEOUS PROPERTY IN SECTION_____	T. _____ N. _____ S. _____ R. _____ E. _____ W. _____	_____
4. LOT NO. _____, RECORDED PLAT _____		
5. PRIVATE CLAIMS _____		

L 4 P 251

REGISTER OF DEEDS STAMP AND
FILING NUMBER

I, Ronnie M. Lester, do hereby certify that under requirements of P.A. 74, Michigan P.A. of 1970, the corner points mentioned in lines 1 and 2 above were, in a field survey on September 5, 1973, established, re-established, monumented, re-monumented, recovered or restored as expressed below and in conformance with regulations and rules therefore as required in the current manual of survey instructions of the United States Department of the Interior, Bureau of Land Management or by a decree of a court of law. Furthermore, that the corner points mentioned in lines 3, 4 and 5 above were, in a field survey on _____, 19____, found, recovered, restored, established or re-established as expressed below and in conformance with the rules of the Michigan State Board of Registration for Land Surveyors or, by a Decree of a Court of law:

A. Description of original monument and accessories and/or subsequent restoration:
I-9 Original monument and accessories obliterated

B. Description of corner evidence found and/or method applied in restoring or re-establishing corner:
I-9 Northeast Corner Section 27, T3N, R2W, Found boatspike per ICRC Records in Centerline of Aurelius Road on of fence line West

C. Description of monument for corner and accessories established to perpetuate locating the position of the corner:
I-9 Boatspike as described above
Corner of Apartment building, N.E. 107.35'
P.K. nail in North side of power pole, East, 25.25'
P.K. nail in South side Fence post, West, 33.04'

SIGNED BY Ronnie M. Lester DATE July 14, 1978

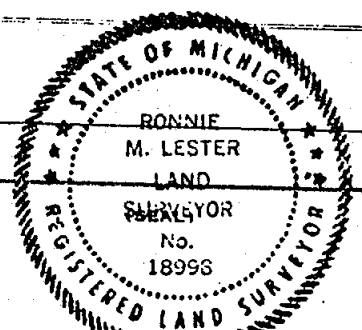
SURVEYOR'S MICHIGAN REGISTRATION NO. 18998

(SEAL)

FOR STATE AND UNITED STATES AGENCIES:

SIGNED BY _____ DATE _____
CHIEF OF SURVEY PARTY

APPROVED AND SIGNED BY _____ DATE _____
MICHIGAN REGISTERED LAND SURVEYOR



SURVEYOR'S MICHIGAN REGISTRATION NO. _____

LAND CORNER RECORDATION CERTIFICATE

FILING REQUIREMENT OF ACT 74, MICH. P.A. 1970

LIBER 5 PG 113

FOR CORNERS OF--	LOCATED IN--	CORNER CODE NUMBER
1. PUBLIC LAND SURVEY	T. 3N N. S., R. 2W E. W.	G-11
2. PROPERTY CONTROLLING IN SECTION	, T. N. S., R. E. W.	
3. MISCELLANEOUS PROPERTY IN SECTION	, T. N. S., R. E. W.	
4. LOT NO.	, RECORDED PLAT	
5. PRIVATE CLAIMS		

FILED

JAN 5 4 01 PM '79

REGISTER OF DEEDS

Paula Johnson
INGHAM COUNTY, MICH.

REGISTER OF DEEDS STAMP AND FILING NUMBER

I, Richard W. Steadman, do hereby certify that under requirements of P.A. 74, Michigan P.A. of 1970, the corner points mentioned in lines 1 and 2 above were, in a field survey on September 6, 1973, established, re-established, monumented, re-monumented, recovered or restored as expressed below and in conformance with regulations and rules therefore as required in the current manual of survey instructions of the United States Department of the Interior, Bureau of Land Management or by a decree of a court of law. Furthermore, that the corner points mentioned in lines 3, 4 and 5 above were, in a field survey on _____, 19____, found, recovered, restored, established or re-established as expressed below and in conformance with the rules of the Michigan State Board of Registration for Land Surveyors or, by a Decree of a Court of law:

A. Description of original monument and accessories and/or subsequent restoration:

Original Monument: wood post set by Musgrove Evans, U.S. Deputy Surveyor in 1827; bearing trees: 20" Beech N50°E 28 lks. and 8" Beech N59°W 15 lks. In a survey dated October 7, 1896, recorded in Volume 4 on Page 10 of Ingham County Surveyor's Records, W. A. Rowe, County Surveyor, notes: "Pointed blue stone from which is a 6" Sugar N26-3/4°E 64 lks., a 14" S. Oak N24-1/2°W 106 lks., and a 5" Sycamore N70°W 36-1/4 lks. County Road Commission records call for an iron and stone witnessed by a 20" Hickory N.E. 59.39 ft., an 18" Oak N.W. 34.09 ft., a 40" Oak S.E. 89.60 ft. and a fence post East 27.98 ft.

B. Description of corner evidence found and/or method applied in restoring or re-establishing corner:

Dug hole in Onondaga Road opposite fencelines East and West and found 1/2" iron rod; continued digging and about 18" below the surface, found large, pointed bluish colored stone.

C. Description of monument for corner and accessories established to perpetuate locating the position of the corner:

Raised location of stone to surface with 3/4" iron pipe and monument box.

Witnesses:	20" Hickory	N.E.	59.39 ft.
	18" Oak	N.W.	34.09 ft.
	40" Oak	S.E.	89.60 ft.

SIGNED BY *Richard W. Steadman* DATE January 5, 1979

SURVEYOR'S MICHIGAN REGISTRATION NO. 11370

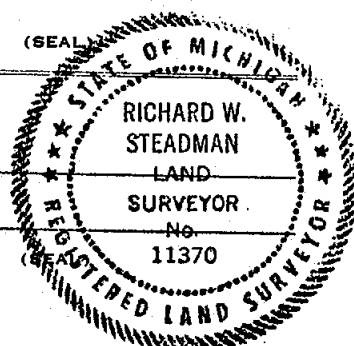
FOR STATE AND UNITED STATES AGENCIES:

SIGNED BY _____ DATE _____

CHIEF OF SURVEY PARTY

APPROVED AND SIGNED BY _____ DATE _____

MICHIGAN REGISTERED LAND SURVEYOR



SURVEYOR'S MICHIGAN REGISTRATION NO. _____

LAND CORNER RECORDATION CERTIFICATE

FILING REQUIREMENT OF ACT 74, MICH. P.A. 1970

LIBER 5 PG 111

FOR CORNERS OF:-	LOCATED IN:-	CORNER CODE NUMBER
1. PUBLIC LAND SURVEY_____ T. 3N N. S., R. 2W E. W.		G-10
2. PROPERTY CONTROLL- ING IN SECTION_____ , T. _____ N. S., R. _____ E. W.		
3. MISCELLANEOUS PROPERTY IN SECTION_____ , T. _____ N. S., R. _____ E. W.		
4. LOT NO. _____ , RECORDED PLAT _____		
5. PRIVATE CLAIMS _____		

FILED

JAN 5 4 01 PM '79

REGISTER OF DEEDS

Paul Johnson
INGHAM COUNTY, MICH.

REGISTER OF DEEDS STAMP AND
FILING NUMBER

I, Richard W. Steadman, do hereby certify that under requirements of P.A. 74, Michigan P.A. of 1970, the corner points mentioned in lines 1 and 2 above were, in a field survey on May 13, 1974, established, re-established, monumented, re-monumented, recovered or restored as expressed below and in conformance with regulations and rules therefore as required in the current manual of survey instructions of the United States Department of the Interior, Bureau of Land Management or by a decree of a court of law. Furthermore, that the corner points mentioned in lines 3, 4 and 5 above were, in a field survey on _____, 19____, found, recovered, restored, established or re-established as expressed below and in conformance with the rules of the Michigan State Board of Registration for Land Surveyors or, by a Decree of a Court of law:

A. Description of original monument and accessories and/or subsequent restoration:

Original Monument: wood post set by Musgrove Evans, U.S. Deputy Surveyor in 1827; bearing trees: 9" Elm S43°E 40 lks. and 12" Swp. Oak S63°W 35 lks. In a survey dated March 19, 1867, recorded in Volume 3 on Page 31, Ingham County Surveyor's Records, T. J. Brown, Deputy County Surveyor, notes: "Post, no trees marked and old ones gone." In a survey dated October 7, 1896, recorded in Volume 4 on Page 10, W. A. Rowe, County Surveyor notes: "Stone for corner from which is a 10" Maple West 48 lks. (31.68 ft.) and a 10" B. Walnut S10-1/2°W 198 lks.

B. Description of corner evidence found and/or method applied in restoring or re-establishing corner:

In the intersection of Harper and Eifert Roads, found the 1-1/2" iron pipe called for in Land Corner Recordation Certificate No. 472. Dug hole, and beneath the pipe about 3 ft. below the surface found large, flat-topped stone with small stones around it.

C. Description of monument for corner and accessories established to perpetuate locating the position of the corner:

Set monument box over 1-1/2" iron pipe as found to mark the corner.

Witnesses: 36" Maple stump	West	31.65 ft.
24" Walnut	N55°E	41.41 ft.
Telephone pole	N70°W	22.10 ft.
24" Oak	S19°E	45.27 ft.

SIGNED BY Richard W. Steadman DATE January 4, 1979

SURVEYOR'S MICHIGAN REGISTRATION NO. 11370

FOR STATE AND UNITED STATES AGENCIES:

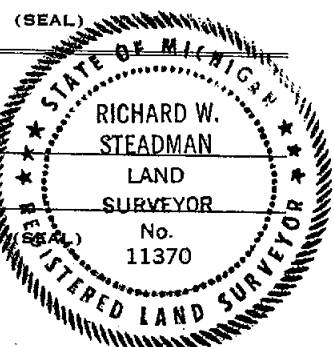
SIGNED BY _____ DATE _____

CHIEF OF SURVEY PARTY

APPROVED AND SIGNED BY _____ DATE _____

MICHIGAN REGISTERED LAND SURVEYOR

SURVEYOR'S MICHIGAN REGISTRATION NO. _____



LAND CORNER RECORDATION CERTIFICATE

FILING REQUIREMENT OF ACT 74, MICH. P.A. 1970

FOR CORNERS OF--:	LOCATED IN--:	CORNER CODE NUMBER
1. PUBLIC LAND SURVEY_____ T. <u>3</u> N. <u>2</u> W.		G-11
2. PROPERTY CONTROLLING IN SECTION_____ , T. _____ N. _____ E. _____ S. _____ W. _____		
3. MISCELLANEOUS PROPERTY IN SECTION_____ , T. _____ N. _____ E. _____ S. _____ R. _____ W. _____		
4. LOT NO. _____ , RECORDED PLAT _____		
5. PRIVATE CLAIMS _____		

LIBER 4 PG 135
FILED

FEB 16 10 46 AM '78

REGISTER OF DEEDS
Paula Johnson
INGHAM COUNTY, MICH.

REGISTER OF DEEDS STAMP AND
FILING NUMBER

I, Ronnie M. Lester, do hereby certify that under requirements of P.A. 74, Michigan P.A. of 1970, the corner points mentioned in lines 1 and 2 above were, in a field survey on September 29, 1976, established, re-established, monumented, re-monumented, recovered or restored as expressed below and in conformance with regulations and rules therefore as required in the current manual of survey instructions of the United States Department of the Interior, Bureau of Land Management or by a decree of a court of law. Furthermore, that the corner points mentioned in lines 3, 4 and 5 above were, in a field survey on _____, 19____, found, recovered, restored, established or re-established as expressed below and in conformance with the rules of the Michigan State Board of Registration for Land Surveyors or, by a Decree of a Court of law:

A. Description of original monument and accessories and/or subsequent restoration:

G-11 Original monument and accessories obliterated.

B. Description of corner evidence found and/or method applied in restoring or re-establishing corner:

G-11 Found 1/2" pipe & cap #11370 in monument box as set by R. Steadman.

C. Description of monument for corner and accessories established to perpetuate locating the position of the corner:

G-11 1/2" pipe in monument box.

Nail & Steadman tag in West side 60" oak, S.E., 89.58'
Nail & Steadman tag in N.E. side 24" oak, N.W., 34.08'
Nail & Steadman tag in West side of 18" Hickory, N.E., 59.39'

SIGNED BY Ronnie M. Lester DATE 2/16/78

SURVEYOR'S MICHIGAN REGISTRATION NO. 18998

FOR STATE AND UNITED STATES AGENCIES:

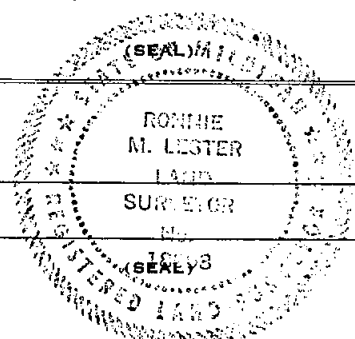
SIGNED BY _____ DATE _____

CHIEF OF SURVEY PARTY

APPROVED AND SIGNED BY _____ DATE _____

MICHIGAN REGISTERED LAND SURVEYOR

SURVEYOR'S MICHIGAN REGISTRATION NO. _____



LAND CORNER RECORDATION CERTIFICATE

FILING REQUIREMENT OF ACT 74, MICH. P.A. 1970

FOR CORNERS OF—:	LOCATED IN—:	CORNER CODE NUMBER
1. PUBLIC LAND SURVEY <u>35</u> T. <u>3N</u> N. S., R. <u>2W</u> E. W.		<u>I-11</u>
2. PROPERTY CONTROLLING IN SECTION _____, T. _____ N. S., R. _____ E. W.		
3. MISCELLANEOUS PROPERTY IN SECTION _____, T. _____ N. S., R. _____ E. W.		
4. LOT NO. _____, RECORDED PLAT _____		
5. PRIVATE CLAIMS _____		

LIBER

4 PG 133

FILED

FEB 13 11 00 AM '78

REGISTER OF DEEDS

Paula Johnson

INGHAM COUNTY, MICH.

REGISTER OF DEEDS STAMP AND FILING NUMBER

I, George M. Young, do hereby certify that under requirements of P.A. 74, Michigan P.A. of 1970, the corner points mentioned in lines 1 and 2 above were, in a field survey on 12/22, 19 77, established, re-established, monumented, re-monumented, recovered or restored as expressed below and in conformance with regulations and rules therefore as required in the current manual of survey instructions of the United States Department of the Interior, Bureau of Land Management or by a decree of a court of law. Furthermore, that the corner points mentioned in lines 3, 4 and 5 above were, in a field survey on 12/22, 19 77, found, recovered, restored, established or re-established as expressed below and in conformance with the rules of the Michigan State Board of Registration for Land Surveyors or, by a Decree of a Court of law:

A. Description of original monument and accessories and/or subsequent restoration:

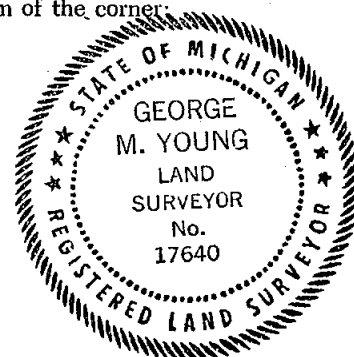
I-11 Boat Spike (I.C.R.C. 1964)
 8" Elm E.N.E. 92.04'
 20" Elm E.S.E. 75.80'
 20" Hickory W.N.W. 68.66'
 W 1/4 Post Sec. 26, North 2,642.60'
 W 1/4 Post Sec. 35, South 2,641.65'

B. Description of corner evidence found and/or method applied in restoring or re-establishing corner:

I-11 Found one remaining accessory
 Found no Boat Spike
 Re-set corner by Pro-rating measurements to W 1/4 post of Sec. 26, & W 1/4 Post of Sec. 35 for N-S location. E-W location determined by 20" Hickory W.N.W. 68.66'

C. Description of monument for corner and accessories established to perpetuate locating the position of the corner:

I-11 P.K. Nail
 Nail in 20" Hickory N 70° W 68.66'
 W 1/4 post, Section 35, S 2,641.69'
 W 1/4 post, Section 26, N 00° 06' 32" E 2,642.64'



SIGNED BY *George M. Young* DATE January 11, 1978

SURVEYOR'S MICHIGAN REGISTRATION NO. 17640

(SEAL)

FOR STATE AND UNITED STATES AGENCIES:

SIGNED BY _____ DATE _____

CHIEF OF SURVEY PARTY

APPROVED AND SIGNED BY _____ DATE _____

MICHIGAN REGISTERED LAND SURVEYOR

(SEAL)

SURVEYOR'S MICHIGAN REGISTRATION NO. _____

LAND CORNER RECORDATION CERTIFICATE

FILING REQUIREMENT OF ACT 74, MICH. P.A. 1970

South 1/4 corner, Section 27

LIBER

5 PG 319

FOR CORNERS OF--	LOCATED IN--	CORNER CODE NUMBER
1. PUBLIC LAND SURVEY <u>27</u> T. <u>3</u> N. R. <u>2</u> W.		H-11
2. PROPERTY CONTROLLING IN SECTION _____, T. _____ S., R. _____ E. W.		
3. MISCELLANEOUS PROPERTY IN SECTION _____, T. _____ S., R. _____ E. W.		
4. LOT NO. _____, RECORDED PLAT _____		
5. PRIVATE CLAIMS _____		

FILED

OCT 2 8 53 AM '79

REGISTER OF DEEDS

Paula Johnson
INGHAM COUNTY, MICH.

REGISTER OF DEEDS STAMP AND
FILING NUMBER

I, Ron Helsel, do hereby certify that under requirements of P.A. 74, Michigan P.A. of 1970, the corner points mentioned in lines 1 and 2 above were, in a field survey on September 24, 1979, established, re-established, monumented, re-monumented, recovered or restored as expressed below and in conformance with regulations and rules therefore as required in the current manual of survey instructions of the United States Department of the Interior, Bureau of Land Management or by a decree of a court of law. Furthermore, that the corner points mentioned in lines 3, 4 and 5 above were, in a field survey on _____, 19____, found, recovered, restored, established or re-established as expressed below and in conformance with the rules of the Michigan State Board of Registration for Land Surveyors or, by a Decree of a Court of law:

A. Description of original monument and accessories and/or subsequent restoration:

B. Description of corner evidence found and/or method applied in restoring or re-establishing corner:

Found iron and surveyors cap (George Young) at base of wood anchor post, on line with fences to North, South and East.

C. Description of monument for corner and accessories established to perpetuate locating the position of the corner:

Iron bar and cap
South, 17.54 feet, N & T 10 inch elm
North, 1.5 feet, N & T West side wood anchor post
West, 15 feet more or less to the centerline drain

SIGNED BY Ron Helsel DATE 9-27-79

SURVEYOR'S MICHIGAN REGISTRATION NO. 18994

(SEAL)

FOR STATE AND UNITED STATES AGENCIES:

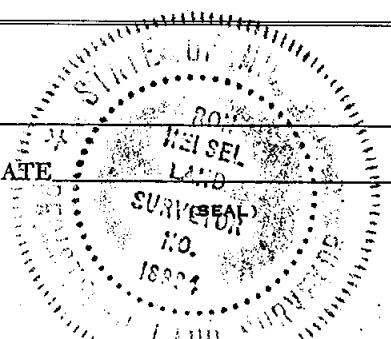
SIGNED BY _____ DATE _____

CHIEF OF SURVEY PARTY

APPROVED AND SIGNED BY _____ DATE _____

MICHIGAN REGISTERED LAND SURVEYOR

SURVEYOR'S MICHIGAN REGISTRATION NO. _____



FORM APPROVED BY MICHIGAN STATE BOARD OF REGISTRATION, JAN. 28, 1971
REVISED MAY 14, 1975

MAY PLACE SKETCH ON BACK OR ATTACHED SHEET

LAND CORNER RECORDATION CERTIFICATE

FILING REQUIREMENT OF ACT 74, MICH. P.A.1970

NW corner, Section 27, T3N, R2W, Delhi Township

LIBER

6 PAGE 223

FOR CORNERS OF—:

LOCATED IN—:

CORNER CODE NUMBER

FILED

1. PUBLIC LAND SURVEY _____ T. 3 N. •, R. 2 W. • CORNER CODE NUMBER G-9
2. PROPERTY CONTROLLING IN SECTION _____, T. _____ N. _____ S., R. _____ E. _____ W. _____
3. MISCELLANEOUS PROPERTY IN SECTION _____, T. _____ N. _____ S., R. _____ E. _____ W. _____
4. LOT NO. _____, RECORDED PLAT _____
5. PRIVATE CLAIMS _____

Dec 10 11 18 AM '82

REGISTER OF DEEDS

Paula Johnson
INGHAM COUNTY, MICH.

REGISTER OF DEEDS STAMP AND
FILING NUMBER

I, James E. Stephens, do hereby certify that under requirements of P.A. 74, Michigan P.A. of 1970, the corner points mentioned in lines 1 and 2 above were, in a field survey on December 7, 1982, established, re-established, monumented, re-monumented, recovered or restored as expressed below and in conformance with regulations and rules therefore as required in the current manual of survey instructions of the United States Department of the Interior, Bureau of Land Management or by a decree of a court of law. Furthermore, that the corner points mentioned in lines 3, 4 and 5 above were, in a field survey on _____, 19____, found, recovered, restored, established or re-established as expressed below and in conformance with the rules of the Michigan State Board of Registration for Land Surveyors or, by a Decree of a Court of law:

A. Description of original monument and accessories and/or subsequent restoration:

Original monument and accessories were not found.

B. Description of corner evidence found and/or method applied in restoring or re-establishing corner:

Found 3/4" rod in centerline of Eifert Road as recorded in Liber 2 of Land Corners, Page 297, Ingham County Records

This corner is being re-recorded to update the witnesses

C. Description of monument for corner and accessories established to perpetuate locating the position of the corner:

3/4" Rod Witnessed By:

- Nail & Tag in North side 24" Poplar N75°E 25.52'
- Nail & Tag in South side Utility Pole N45°W 53.49'
- Nail & Tag in North side 30" Maple Tree S80°W 62.52'
- Nail & Tag in North side 26" Maple Tree S65°W 73.63'

SIGNED BY James E. Stephens DATE 12-9-82

SURVEYOR'S MICHIGAN REGISTRATION NO. 16053

FOR STATE AND UNITED STATES AGENCIES:

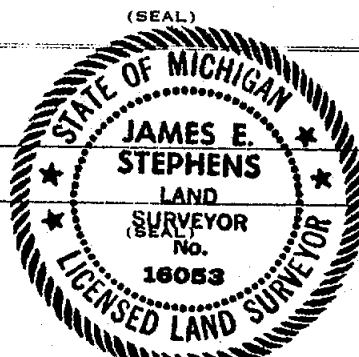
SIGNED BY _____ DATE _____

CHIEF OF SURVEY PARTY

APPROVED AND SIGNED BY _____ DATE _____

MICHIGAN REGISTERED LAND SURVEYOR

SURVEYOR'S MICHIGAN REGISTRATION NO. _____



1971

FORM APPROVED BY MICHIGAN STATE BOARD OF REGISTRATION, JAN. 28, 1971
REVISED MAY 14, 1975

MAY PLACE SKETCH ON BACK OR ATTACHED SHEET

LAND CORNER RECORDATION CERTIFICATE

FILING REQUIREMENT OF ACT 74, MICH. P.A.1970

West 1/4 corner, Section 27, T3N, R2W, Delhi Township

FOR CORNERS OF--:	LOCATED IN--:	CORNER CODE NUMBER
1. PUBLIC LAND SURVEY_____ T. <u>3</u> N. <u>●</u> R. <u>2</u> W.		<u>G-10</u>
2. PROPERTY CONTROLLING IN SECTION_____, T. _____ S., R. _____ E. W.		
3. MISCELLANEOUS PROPERTY IN SECTION_____, T. _____ S., R. _____ E. W.		
4. LOT NO. _____, RECORDED PLAT _____		
5. PRIVATE CLAIMS _____		

LIBER 6 PAGE 224

FILED:

DEC 10 11 18 AM '82

REGISTER OF DEEDS

Paula Johnson
INGHAM COUNTY, MICH.

REGISTER OF DEEDS STAMP AND
FILING NUMBER

I, James E. Stephens, do hereby certify that under requirements of P.A. 74, Michigan P.A. of 1970, the corner points mentioned in lines 1 and 2 above were, in a field survey on December 7, 1982, established, re-established, monumented, re-monumented, recovered or restored as expressed below and in conformance with regulations and rules therefore as required in the current manual of survey instructions of the United States Department of the Interior, Bureau of Land Management or by a decree of a court of law. Furthermore, that the corner points mentioned in lines 3, 4 and 5 above were, in a field survey on _____, 19____, found, recovered, restored, established or re-established as expressed below and in conformance with the rules of the Michigan State Board of Registration for Land Surveyors or, by a Decree of a Court of law:

A. Description of original monument and accessories and/or subsequent restoration:

Original monument and accessories were not found.

B. Description of corner evidence found and/or method applied in restoring or re-establishing corner:

Found 1 1/2" iron pipe in the intersection of Eifert and Harper Roads as recorded in Liber 5 of Land Corners, Page 111, Ingham County Records.

This corner is being re-recorded to update the witnesses.

C. Description of monument for corner and accessories established to perpetuate locating the position of the corner:

1 1/2" iron pipe Witnessed By:

Nail and Tag in South side Utility Pole N45°E 86.28'
Nail & Tag in East side 38" Maple tree N35°W 50.53'
Nail & Tag in South side Utility Pole N85°W 29.72'
Nail & Tag in East side 14" Walnut tree S30°W 81.55'

SIGNED BY James E. Stephens DATE 12-9-82

SURVEYOR'S MICHIGAN REGISTRATION NO. 16053

FOR STATE AND UNITED STATES AGENCIES:

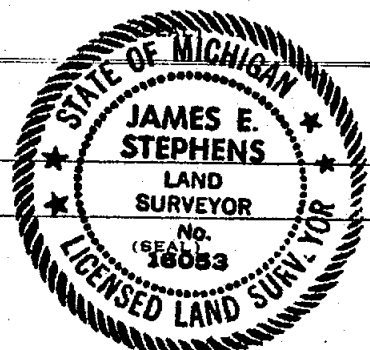
SIGNED BY _____ DATE _____

CHIEF OF SURVEY PARTY

APPROVED AND SIGNED BY _____ DATE _____

MICHIGAN REGISTERED LAND SURVEYOR

SURVEYOR'S MICHIGAN REGISTRATION NO. _____



1972

FORM APPROVED BY MICHIGAN STATE BOARD OF REGISTRATION, JAN. 28, 1971
REVISED MAY 14, 1975

MAY PLACE SKETCH ON BACK OR ATTACHED SHEET

LAND CORNER RECORDATION CERTIFICATE
Filing Requirement of Act 74, Mich. P.A. 1970

LIBER 6 PAGE 348

For corners in

Ingham
(County)

Located In:
Delhi Twp.

Corner Code ##

FILED

OCT 22 8 45 AM '87

REGISTER OF DEEDS

Paul Johnson

INGHAM COUNTY, MICH.

Register of Deeds Stamp & File Number

1. Public Land Survey	T	3N	R	2W	I-9
	T		R		
	T		R		
	T		R		
2. Property Controlling in Section	S		T	R	
	S		T	R	
3. Miscellaneous Property in Sec.	S		T	R	
	S		T	R	

4. Lot No. _____, Recorded Plat _____
5. Private Claims _____

I, Mark W. Witalec, in a field survey on September 11, 19 87, do hereby certify that under requirements of P.A. 74, Michigan P.A. of 1970, the corner points mentioned in lines 1 and 2 above were in conformance with regulations and rules therefore as required in the current manual of survey instructions of the United States Department of the Interior, Bureau of Land Management or by a decree of a Court of Law and/or that the corner points mentioned in lines 3, 4 and 5 above were in conformance with the rules of the Michigan Board of Land Surveyors or by a Decree of a Court of Law; established, re-established, monumented, re-monumented, recovered, found as expressed below:

NOTE: Not more than 4 corners, all in the same town and range, may be recorded on this certificate.

	A	B	C	D	E	F	G	H	I	J	K	L	M
2	6		5		4		3		2		1		
3													
4	7		8		9		10		11		12		
5													
6	18		17		16		15		14		13		
7													
8	19		20		21		22		23		24		
9													
10	30		29		28		27		26		25		
11													
12	31		32		33		34		35		36		
13													

A. Description of original monument and accessories and/or subsequent restoration:
CORNER IS RECORDED IN L. 4, P. 251, INGHAM COUNTY
RECORDED CORNERS AS A BOAT SPIKE IN THE CENTERLINE
OF AURELIUS ROAD IN LINE WITH THE FENCE TO THE WEST
(SEARCHED FOR BUT DID NOT LOCATE THE BOAT SPIKE - ROAD APPARENTLY OVERLAYED)

B. Description of corner evidence found and/or method applied in restoring or reestablishing corner:
SET A P.K. & CAP #30897 AT THE CORNER USING FOLLOWING EVIDENCE:
1. N.E. 107.35' TO CORNER OF APARTMENT BUILDING & WEST 33' TO BASE OF BROKEN OFF FENCE POST (WITNESSES PER CORNER CERTIFICATE IN L. 4, P. 251).
2. NORTH 773.33' TO P.K. & CAP #30897 AT S.W. CORNER OF PARCEL DESCRIBED IN L. 1159, P. 702 (773.33' IS THE SUM OF RECORD FRONTAGES IN SEC. 23 FROM CORNER I-9 NORTHERLY TO ABOVE MENTIONED DEED CORNER).

VERIFICATION:

1. SET P.K. & CAP IS IN LINE WITH WIRE FENCE TO WEST.
2. EAST - WEST VERIFICATION WITH SURVEY MONUMENTATION IN THE SW 1/4 OF THE SW 1/4 OF SEC. 23.
3. NORTH - SOUTH VERIFICATION BY DISTANCE MEASURED SOUTHERLY TO COR. I-10 (2643.75' MEAS. - 2644.07' PER SUM OF RECORDED DIMENSIONS - 2644.31' PER RECORDED SURVEY IN L. 1, PP. 998-999)

C. Description of monument for corner and accessories established to perpetuate locating the position of the corner:

- P.K. & CAP #30897
- N.E. 107.35' TO S.W. CORNER OF BRICK APARTMENT BUILDING
W. 33' TO BASE OF BROKEN OFF WOOD FENCE POST
E. 25.23' TO FORM NAIL & TAG #25832 NORTH SIDE P.P.
S.S.E. 171.42' TO P.K. & TAG #30897 WEST SIDE P.P.
N. 2.13'± & W. 0.23'± TO FOUND 1/2" ROD



Signed by Mark W. Witalec Date 9-21-87
Surveyor's Michigan License No. 30897