

LAND CORNER RECORDATION CERTIFICATE
Filing Requirement of Act 74, Mich. P.A. 1970

For corners in
INGHAM TOWNSHIP
INGHAM COUNTY

Located In: Corner Code #

1. Public Land Survey

T 2N R 1E K3

2. Property Controlling
In Section

S T R

3. Miscellaneous
Property in Sec.

S T R

B:12 P:205

12/6/05

12:55 PM

Pages: 2

2005-065066 LAND CORNER Receipt #3849
Paula Johnson, Ingham County, Michigan



Register of Deeds Stamp & File Number

4. Lot No. , Recorded Plat

5. Private Claims

I, Wendy S. Parsons, in a field survey on February 10, 2005 do hereby state that under requirements of P.A. 74, Michigan P.A. of 1970, the corner points mentioned in lines 1 and 2 above were in conformance with regulations and rules therefore as required in the current manual of survey instructions of the United States Department of the Interior, Bureau of Land Management or by decree of a Court of Law and/or that the corner points mentioned in lines 3, 4 and 5 above were in conformance with the rules of the Michigan Board of Land Surveyors or by a Degree of a Court of Law; established, re-established, monumented, recovered, found as expressed below:

NOTE: Not more than 2 corners, all in the same town and range, may be recorded on this certificate.

A. Description of original monument and accessories and/or subsequent restoration:

1. FEBRUARY, 1826 - GLO SURVEY - JOSEPH WAMPLER

SET P COR OF 1,2,11&12

BEECH 16" S25E, 44-2/3 (29.19')

DITTO 7" N87W, 12-1/2 (8.25')

DITTO 7" N18-1/2E, 8 (5.28')

K4 - K3 = 40 CH (2640') K3 - K2 = 40 CH (2640') K3 - L3 = 39.73 CH. (2622.18')

2. FEBRUARY 8, 1853 - COUNTY SURVEYOR NOTES - A. JACKSON, BOOK 4, PAGE 297-299

IRONWOOD 7" N18-1/2E, 8 (5.28')

K3-L3 = 156 RODS 44 LINKS (2603.04')

3. MAY 18, 1978 - P.A. 132 - AUSTIN WILLIAMS (L.S. 21275) LIBER 3, PAGE 417

NAIL & TAG IN CLUMP OF 6" BEECH NORTH 26.78'

NAIL & TAG IN 30" OAK S85°W 89.78'

NAIL & TAG IN FENCE POST S30°E 38.38'

K3-K4 = 2636.7' (POSSIBLE TYPO ON SURVEY AS IT IS 10' LONG COMPARED TO ALL OTHER RECORDED DIMENSIONS AS WELL AS THE 2005 REMONUMENTATION MEASURED DIMENSION)

CONTINUED ON BACK

P.A. 345 INGHAM COUNTY
PEER APPROVED 3/22/2005

B. Description of corner evidence found and/or method applied in restoring or reestablishing corner:

SEARCHED AT APPARENT LOCATION OF CORNER. FOUND 3/4" PIPE IN MONUMENT BOX AT THE CENTERLINE OF COLUMBIA ROAD WITH FENCE LINE TO THE NORTH. EXCAVATED TO 3 FEET, AND NO ADDITIONAL CORNER EVIDENCE WAS LOCATED. TIES TO TWO (2) WITNESSES AND ADJACENT GOVERNMENT CORNERS WERE FOUND TO BE CONSISTENT WITH PREVIOUSLY RECORDED INFORMATION. REPLACED FOUND 3/4" PIPE WITH 3/4" X 24" REBAR WITH 2-1/2" ALUMINUM CAP MARKED PA 345 INGHAM COUNTY AND STAMPED PS 47969 IN MONUMENT BOX.

MEASURED IN 2005 (USING GLOBAL POSITIONING SATELLITES) AS: K3 - L3 = 2602.81', K3 - K4 = 2626.95'

C. Description of monument for corner and accessories established to perpetuate locating the position of the corner:

REPLACED FOUND 3/4" PIPE WITH 3/4" X 24" REBAR WITH 2-1/2" ALUMINUM CAP MARKED PA 345 INGHAM COUNTY AND STAMPED PS 47969 IN MONUMENT BOX.

NORTH 26.45' FOUND NAIL & TAG #18998 (RON LESTER) IN WEST FACE MAPLE CLUSTER
S50°E 40.28' SET NAIL & TAG #31603 (DOUGLAS RICHARDSON) IN NORTH FACE BOX ELDER CLUSTER
S80°W 89.40' FOUND NAIL & TAG #18998 (RON LESTER) IN NORTH FACE 36" OAK
N70°W 94.10' FOUND NAIL & TAG #25832 (LARRY BRYAN) SOUTH FACE 8" GATE POST

Signed by

Date 11/29/05

Surveyor's Michigan License No.

47969

FORM APPROVED BY MICHIGAN STATE BOARD OF PROFESSIONAL SURVEYORS, JAN. 28, 1971
REVISED MAY 14, 1976
REVISED JAN., 1983
REVISED OCT., 1996

1	A	B	C	D	E	F	G	H	I	J	K	L	M
2	6	5	4	3	2	1							
3													
4	7	8	9	10	11	12							
5													
6	18	17	16	15	14	13							
7													
8	19	20	21	22	23	24							
9													
10	30	29	28	27	26	25							
11													
12	31	32	33	34	35	36							
13													



INGHAM COUNTY, INGHAM TOWNSHIP
K3

4. MAY 19, 1978 - P.A.74 - AUSTIN WILLIAMS (L.S. 21275) LIBER 4, PAGE 242
A. ORIGINAL MONUMENT AND ACCESSORIES OBLITERATED
B. FOUND 1/2" IRON BAR WITH IDENTIFICATION CAP IN INTERSECTION OF COLUMBIA ROAD AND FENCE TO THE NORTH
C. NAIL & TAG IN CLUMP OF 6" BEECH NORTH 26.78'
NAIL & TAG IN 30" OAK S85°W 89.78'
NAIL & TAG IN FENCE POST S30°E 38.38'
5. NOVEMBER 16, 1978 - C.E.T.A. FIELD NOTES - TECH SUP'R - L. BRYAN (L.S. 25832) OF POLARIS
FD 1/2" BAR BY WITNESSES IN LIBER 4, PAGE 242, CHECKED & USED THIS WITNESSES. ALL N/TAGS RLS
#11370 (RICHARD STEADMAN)
K3 CL Columbia Road East & west on Fence line North
6. JULY 31, 1992 - PA 132 - ACCOLADE, INC, RON HELSEL (RLS #18994), LIBER 7 PAGE 26
FD PIPE IN MON BOX IN C COLUMBIA & F/L TO NORTH
FD N & T #11370, MAPLE CLUMP, NORTH 26.75'
SET N & T 30" OAK S85°W, 88.90'
FD N & T #18998, 28" BASSWOOD, N85°W, 117.54'
SET N & T ELM CLUMP, S40°W, 21.57'
K3 - K4 = 2626.87'
7. DECEMBER 11, 1992 - P.A. 132 - ACCOLADE, INC, RON HELSEL (RLS #18994), LIBER 6, PAGE 1187
FD PIPE IN MON BOX IN C COLUMBIA & F/L TO NORTH
FD N & T #11370, MAPLE CLUMP, NORTH 26.75'
SET N & T 30" OAK S85°W, 88.90'
FD N & T #18998, 28" BASSWOOD, N85°W, 117.54'
SET N & T ELM CLUMP, S40°W, 21.57'
8. JULY 20, 2000 - P.A.132 - POLARIS SURVEYING, RON M. LESTER (L.L.S. #18998), LIBER 8, PAGE 741
1" PIPE IN MONUMENT BOX. REFERS TO LIBER 4, PAGE 242
FOUND NAIL & TAG #18998 N. SIDE 40" OAK MAG. AZ 262° (S82°W) 89.51'
SET GALVANIZED NAIL AND 1 1/2" ALUMINUM TAG STAMPED "PS 18998 WITNESS"
WEST SIDE 5-10" MAPLE CLUMP MAG AZ. 07° (N07°E) 26.54'
SOUTHWEST CORNER CONCRETE GARAGE FOUNDATION MAG. AZ. 22° (N22°E) 135.55'
SOUTHWEST CORNER CONCRETE PORCH FOUNDATION MAG AZ. (N32°E 142.31')
K3 - K2 = 2626.90', K3-L3 = 2602.92'
9. APRIL 26, 2002 - P.A.132 - WOLVERINE ENGINEERS AND SURVEYORS, MAURICE H. MAHIEU (PS
#28414), LIBER 8, PAGE 1075
PIPE IN MONUMENT BOX IN CL COLUMBIA, & F/L TO NORTH
N&T #11370 MAPLE CLUMP, NORTH 26.75'
N&T 30" OAK, S85°W, 88.90'
N&T #18990 28" BASSWOOD, N85°W, 117.54'
N&T ELM CLUMP, S40°W, 21.57'
K3 - K4 = 2626.89'

NO ADDITIONAL INFORMATION



LAND CORNER RECORDATION CERTIFICATE
Filing Requirement of Act 74, Mich. P.A. 1970

For corners in
INGHAM TOWNSHIP
INGHAM COUNTY

Located In: Corner Code #

1. Public Land Survey

T 2N R 1E K4

2. Property Controlling
In Section

S T R

3. Miscellaneous
Property in Sec.

S T R
S T R

B:12 P:204 12/6/05 12:55 PM Pages: 2
2005-065065 LAND CORNER Receipt #3849
Paula Johnson, Ingham County, Michigan



Register of Deeds Stamp & File Number

4. Lot No. _____, Recorded Plat _____
5. Private Claims _____

I, Wendy S. Parsons, in a field survey on February 10, 2005 do hereby state that under requirements of P.A. 74, Michigan P.A. of 1970, the corner points mentioned in lines 1 and 2 above were in conformance with regulations and rules therefore as required in the current manual of survey instructions of the United States Department of the Interior, Bureau of Land Management or by decree of a Court of Law and/or that the corner points mentioned in lines 3, 4 and 5 above were in conformance with the rules of the Michigan Board of Land Surveyors or by a Degree of a Court of Law; established, re-established, monumented, recovered, found as expressed below:

NOTE: Not more than 2 corners, all in the same town and range, may be recorded on this certificate.

A. Description of original monument and accessories and/or subsequent restoration:

1. FEBRUARY, 1826 - GLO SURVEY - JOSEPH WAMPLER

SET QUARTER POST

BEECH 7" S36-1/2W 23-1/2 (15.51')

BEECH 10" S48E 15 (9.9')

K5 - K4 = 40 CH (2640') K4 - K3 = 40 CH (2640')

2. JANUARY 27, 1842 COUNTY SURVEYOR NOTES - A. JACKSON, BOOK 4, PAGE 162
BEECH 12" S89E 52 (34.32')

3. FEBRUARY 8, 1853 - COUNTY SURVEYOR NOTES - A. JACKSON, BOOK 4, PAGE 298
RED OAK 32" S35-1/4W 75 (49.5')

K4 - L4 = 158 rods (2607')

4. MAY 24, 1856 - COUNTY SURVEYOR NOTES - A. JACKSON, BOOK 3, PAGE 111
RED OAK 52 S35-1/4 W 75 (49.5')

5. MAY 18, 1978 - P.A. 132 - AUSTIN WILLIAMS (L.S. 21275) LIBER 3, PAGE 417

NAIL & TAG IN 20" STUMP, SOUTH 31.85'

NAIL & TAG IN 6" DOUBLE ELM S45°E 61.35'

NAIL & TAG IN 36" TWIN OAKS N10°E 45.12'

K3-K4 = 2636.7' (POSSIBLE TYPO ON SURVEY AS IT IS 10' LONG COMPARED TO ALL OTHER RECORDED DIMENSIONS AS WELL AS THE 2005 REMONUMENTATION MEASURED DIMENSION)

CONTINUED ON BACK

B. Description of corner evidence found and/or method applied in restoring or reestablishing corner:

SEARCHED APPARENT LOCATION OF CORNER. FOUND IRON WITH A SMASHED CAP 0.30 BELOW THE ASPHALT IN THE CENTERLINE OF CURTIS ROAD WITH TREE ROWS RUNNING TO THE NORTH AND SOUTH. EXCAVATED TO 1.75 FEET TO SAND AND FOUND NO ADDITIONAL CORNER EVIDENCE. TIES TO FOUR (4) WITNESSES AND ADJACENT GOVERNMENT CORNERS WERE FOUND TO BE CONSISTENT WITH PREVIOUSLY RECORDED INFORMATION. REPLACED FOUND IRON AND SMASHED CAP WITH 3/4" X 24" REBAR WITH 2-1/2" ALUMINUM CAP MARKED PA 345 INGHAM COUNTY AND STAMPED PS 47969 IN A NEW MONUMENT BOX. MEASURED IN 2005 (USING GLOBAL POSITIONING SATELLITES) AS: K4 - K3 = 2626.95', K4 - K5 = 2624.36', K4 - L4 = 2612.54'

C. Description of monument for corner and accessories established to perpetuate locating the position of the corner:

REPLACED FOUND IRON AND SMASHED CAP WITH 3/4" X 24" REBAR WITH 2-1/2" ALUMINUM CAP MARKED PA 345 INGHAM COUNTY AND STAMPED PS 47969 IN A NEW MONUMENT BOX.

NORTH 45.81' FOUND NAIL & TAG #18998 (RON LESTER) IN WEST FACE 8" ASH

S45°E 42.48' FOUND NAIL & TAG #18998 (RON LESTER) IN NORTH FACE TWIN 16" ELM

S30°E, 36.28' SET NAIL & TAG #31603 (DOUGLAS RICHARDSON) IN EAST FACE 16" ELM

SOUTH 20.38' SET NAIL & TAG #31603 (DOUGLAS RICHARDSON) IN WEST FACE 8" ASH

Signed by W.S. Parsons

Date 11/29/05

Surveyor's Michigan License No. 47969

FORM APPROVED BY MICHIGAN STATE BOARD OF PROFESSIONAL SURVEYORS, JAN. 28, 1971
REVISED MAY 14, 1975
REVISED JAN., 1983
REVISED OCT., 1995

	A	B	C	D	E	F	G	H	I	J	K	L	M
1													
2	6		5		4		3		2		1		
3													
4	7		8		9		10		11		12		
5													
6	18		17		16		15		14		13		
7													
8	19		20		21		22		23		24		
9													
10	30		29		28		27		26		25		
11													
12	31		32		33		34		35		36		
13													



INGHAM COUNTY, INGHAM TOWNSHIP
K4

6. MAY 19, 1978 - P.A. 74 - AUSTIN WILLIAMS (L.S. 21275) LIBER 4, PAGE 242
- A. ORIGINAL MONUMENT AND ACCESSORIES OBLITERATED
 - B. SET 1/2" IRON BAR WITH IDENTIFICATION CAP BY PROPORTIONATE MEASUREMENT FROM THE WEST 1/4 CORNER OF SECTION 11, T2N-R1E, AND IN LINE WITH FENCE NORTH AND SOUTH. POINT FELL IN CENTER OF CURTIS ROAD
 - C. NAIL & TAG IN 20" STUMP, SOUTH 31.85'
NAIL & TAG IN 6" DOUBLE ELM S45°E 61.35'
NAIL & TAG IN 36" TWIN OAKS N10°E 45.12'

7. NOVEMBER 16, 1978 - C.E.T.A. FIELD NOTES - TECH SUP'R - L. BRYAN OF POLARIS
FOUND 1/2" IRON K-4 BY WITNESSES RECORDED IN LIBER 4 PAGE 242
K-4 CL TREE & FENCE LINE NORTH
CL TREE LINE SOUTH
CL CURTIS ROAD EAST & WEST

8. JULY 31, 1992, P.A. 132 - ACCOLADE, INC, RON HELSEL (RLS #18994), LIBER 7 PAGE 26
REFERS TO LIBER 5, PAGE 244 ON DRAWING PAGE OF SURVEY (DOES NOT MATCH RECORDED PA 74'S OR 132'S), HOWEVER THE FOLLOWING WITNESSES ARE LISTED:
FOUND BAR & CAP #21275 IN CL CURTIS ROAD ON N-S FENCE LINE
FD NAIL & TAG #18998 TWIN 12" ELM S45°E 42.58'
FD NAIL & TAG #18998 TWIN 50" OAK, NORTH 45.75'
SET NAIL & TAG 12" ELM, S30°E, 35.94'
SET NAIL & TAG 6" ASH, SOUTH, 20.57'
K3 - K4 = 2626.87'

9. November 2, 1993, P.A. 132 - ACCOLADE, INC, RON HELSEL (RLS #18994), LIBER 7 PAGE 105
FOUND BAR & CAP #21275 IN CL CURTIS ROAD ON N-S FENCE LINE
FD NAIL & TAG #18998 TWIN 12" ELM S45°E 42.58'
FD NAIL & TAG #18998 TWIN 50" OAK, NORTH 45.75'
SET NAIL & TAG 12" ELM, S30°E, 35.94'
SET NAIL & TAG 6" ASH, SOUTH, 20.57'

10. DECEMBER 20, 1999 - P.A. 132 - ENGER SURVEYING & ENGINEERING, RONALD L. ENGER (L.L.S. #28409). LIBER 8, PAGE 844
1/2" BAR AND CAP #21275 IN CENTERLINE CURTIS ROAD ON NORTH-SOUTH FENCE LINE
NAIL & TAG #18998 WEST SIDE 48" TWIN RED OAK N12°E 45.80'
NAIL & TAG #18998 14" TWIN YELLOW OAK S47°E 42.50'
NAIL & TAG #25837 W. SIDE 6" HICKORY S12°W 29.80'
NAIL & TAG #25837 W. SIDE 14" BURR OAK S77°W, 179.20'
L4 - K4 = 2612.75' K4 - K5 = 2624.05'

11. APRIL 26, 2002 - P.A. 132 - WOLVERINE ENGINEERS AND SURVEYORS, MAURICE H. MAHIEU (PS #28414), LIBER 8, PAGE 1075 REFERS TO LIBER 5, PAGE 244 ON DRAWING PAGE OF SURVEY (DOES NOT MATCH RECORDED PA 74'S, PA 132'S OR WITNESSES FOR OTHER CORNERS IN THE AREA), HOWEVER THE FOLLOWING WITNESSES ARE LISTED:
BAR & CAP #21275 IN CL CURTIS ROAD ON N-S FENCE LINE
NAIL & TAG #18998 TWIN 12" ELM S45°E 42.58'
NAIL & TAG #18998 TWIN 50" OAK, NORTH 45.75'
NAIL & TAG 12" ELM, S30°E, 35.94'
NAIL & TAG 6" ASH, SOUTH, 20.57'
K3 - K4 = 2626.89'

NO ADDITIONAL INFORMATION

LAND CORNER RECORDATION CERTIFICATE
Filing Requirement of Act 74, Mich. P.A. 1970

For corners in
INGHAM TOWNSHIP
INGHAM COUNTY

Located In: Corner Code #

1. Public Land Survey

T 2N R 1E K5

2. Property Controlling
In Section

S T R

3. Miscellaneous
Property in Sec.

S T R

S T R

Paula Johnson-
INGHAM COUNTY
REGISTER OF DEEDS
OFFICIAL SEAL



L-12 P-77

CRNR 17.00

2005-031510



2005-031510

Page: 1 of 2
06/16/2005 08:33r

Register of Deeds Stamp & File Number

4. Lot No. _____, Recorded Plat _____

5. Private Claims _____

I, Wendy S. Parsons, in a field survey on February 14, 2005 do hereby state that under requirements of P.A. 74, Michigan P.A. of 1970, the corner points mentioned in lines 1 and 2 above were in conformance with regulations and rules therefore as required in the current manual of survey instructions of the United States Department of the Interior, Bureau of Land Management or by decree of a Court of Law and/or that the corner points mentioned in lines 3, 4 and 5 above were in conformance with the rules of the Michigan Board of Land Surveyors or by a Degree of a Court of Law; established, re-established, monumented, recovered, found as expressed below:

NOTE: Not more than 2 corners, all in the same town and range, may be recorded on this certificate.

A. Description of original monument and accessories and/or subsequent restoration:

1. FEBRUARY, 1826 - GLO SURVEY - Joseph Wampler

Set P Cor of 11.12.13 & 14

Linden 16" S43 1/2°W 8 (5.28')

Linden 5" N86°E 17 (11.22')

K5 - K6 = 40 ch (2640') K5 - L5 = 39.64 ch (2616.24')

2. JANUARY 27, 1842 - COUNTY SURVEYOR NOTES - Book 4, Page 162 - A. Jackson

Sugar 8" N54 1/2°E 13 links (8.58')

Beech 22 N84 1/4°W 24 1/2 links (16.17')

3. DECEMBER 30, 1859 - COUNTY SURVEYOR NOTES - Book 4, Page 134 - A. Jackson

Ironwood 5" N86°E 17 links (11.22')

K5-L5 = 156 rods 46 links (2604.36')

4. FEBRUARY 10, 1876 - COUNTY SURVEYOR NOTES - Book 2, Page 137 - T.J. Brown

Post

N84-1/4°W 24-1/2 links (16.17') 22" Beech

Continued on Back

B. Description of corner evidence found and/or method applied in restoring or reestablishing corner:

Searched apparent location of corner. Found Iron in pile of Granite Stones at Fence Intersection. Excavated to 3 feet and found no additional corner evidence. Located three (3) previously recorded witness trees. Ties to adjacent government corners are consistent with previously recorded distances. Replaced found iron with 3/4" x 24" rebar with 2-1/2" aluminum cap marked PA 345 INGHAM COUNTY and stamped PS 47969. Measured in 2005 as: K5 - K4 = 2624.36', K5-L5 = 2598.91', K5 - K6 = 2622.69'

C. Description of monument for corner and accessories established to perpetuate locating the position of the corner:

Replaced Found Iron with 3/4" x 24" rebar with 2-1/2" aluminum cap marked PA 345 INGHAM COUNTY and stamped PS 47969

N45°E 13.50' Found Nail & Tag South Side Walnut Stump

N80°E 18.69' Set Nail & Tag #31603 North Side 8" Ash

S10°W 3.39' Set Nail & Tag #31603 West Side 10" Ash

S70°W 10.39' Set Nail & Tag #31603 South Side 12" Ash

N30°W 12.30' Found Nail & Tag #28409 (Ronald L. Enger) Northeast side 10" Ash

N05°W 8.80' Found Nail & Tag East Side Old Maple Stump

Signed by

Date

6/3/05

Surveyor's Michigan License No.

47969

FORM APPROVED BY MICHIGAN STATE BOARD OF PROFESSIONAL SURVEYORS, JAN. 28, 1971
REVISED MAY 14, 1975
REVISED JAN., 1983
REVISED OCT., 1995

P.A. 345 INGHAM COUNTY
PEER APPROVED 03/22/2005 ML

	A	B	C	D	E	F	G	H	I	J	K	L	M
1													
2	6		5		4		3		2		1		
3													
4	7		8		9		10		11		12		
5													
6	18		17		16		15		14		13		
7													
8	19		20		21		22		23		24		
9													
10	30		29		28		27		26		25		
11													
12	31		32		33		34		35		36		
13													



INGHAM COUNTY, INGHAM TOWNSHIP
K5

5. JULY 16, 1975 – PA 74 – (Liber 3, Page 433) George M. Young R.L.S. # 17640

- A. Original monument and accessories obliterated
 - B. Set iron with cap in pile of granite stones and old post
 - C. Set iron with cap-
- Nail in 24" Maple N 05° W 8.80'
Nail in 8" Dead Cherry S 05° W 7.40'
Nail in 18" Walnut N 45° E 13.50'

6. JULY 16, 1975 – PA 132 – (Liber 2, Page 476) George M. Young R.L.S. #17640

- Nail in 24" Maple N 05° W 8.80'
Nail in 8" Dead Cherry S 05° W 7.40'
Nail in 18" Walnut N 45° E 13.50'
Set iron with cap
K5 – L5 = 2599.06'

7. MAY 2, 1977 – PA 132 – (Liber 3, Page 132) Austin C. Williams R.L.S. # 21275
References: Liber 3, Page 433

8. JUNE 11, 1984 – PA 132 – (Liber 4, Page 910) George M. Young R.L.S. # 17640

- Found Iron with Cap
N 05° W 8.8' Nail in 24" Maple
S 05° W 7.40' Nail in 8" Dead Cherry
N 45° E 13.50' Nail in 18" Walnut
Recorded Liber 3, Page 433

9. APRIL 12, 1985 – PA 132 – (Liber 4, Page 1055) George M. Young R.L.S. #17640

- Found Iron with Cap
N 05° W 8.8' Nail in 24" Maple
S 05° W 7.40' Nail in 8" Dead Cherry
N 45° E 13.50' Nail in 18" Walnut
Recorded Liber 3, Page 433

10. JANUARY 15, 1996 – PA 132 – (Liber 4, Page 1184) George M. Young R.L.S. #17640

- Found Iron with Cap
N 05° W 8.8' Nail in 24" Maple
S 05° W 7.40' Nail in 8" Dead Cherry
N 45° E 13.50' Nail in 18" Walnut
Recorded Liber 3, Page 433

11. AUGUST 12, 1996 – PA 132 – (Liber 8, Page 836) Ronald L. Enger R.L.S. #28409
(Liber 3, Page 433)

- ½" Bar and Cap (17640) at Fence Intersection
Nail and Tag (18998) S. Side of Old Stump, Az. 48° 13.60'
Nail and Tag (18989) W. Side 6" Ash, Az. 182° 3.72'
Nail and Tag (PS 28409) NE Side 6" Elm, Az. 304° 11.82'
Nail and Tag (LS 17640) E. Side 24" Stump, Az. 330° 8.89'
K5 – L5 = 2599.29'

12. NOVEMBER 16 – DECEMBER 17, 1999 – PA 132 – (Liber 8, Page 844) Ronald L. Enger R.L.S. # 28409 (Liber 3, Page 433)

- Found capped iron in pile of granite stones
Nail 24" Maple N 5° W 8.80'
Nail 8" Dead Cherry S 5° W 7.40'
Nail 18" Walnut N 45° E 13.50'
K5 – K4 = 2624.05'

13. JANUARY 7, 2000 – PA 132 – (Liber 8, Page 844) Ronald L. Enger R.L.S. # 28409

- Found ½" Bar & Cap #17640 next to old steel fence post in pile of rocks.
Found Nail & Tag #18989, S. side old stump NAZ 48° 13.60'
Found Nail & Tag #18989, W. side 6" Ash NAZ 182° 3.72'
Found Nail & Tag #28409, N.E. side 6" Elm, NAZ 11.82'
Found Nail & Tag #17640, E. side 24" stump NAZ 330° 8.89'

NOTE: Although this information is labeled as L5, S 1/4 Corner Sect 12, this is likely a typo as this witness information matches Enger's witnesses for K5 on a previous survey (Liber 8, Page 836). These witnesses were used in the analysis of Corner K5.



2005-031510

Page: 2 of 2

06/16/2005 08:33

LAND CORNER RECORDATION CERTIFICATE
Filing Requirement of Act 74, Mich. P.A. 1970

For corners in
INGHAM TOWNSHIP
INGHAM COUNTY

Located In: Corner Code #

1. Public Land Survey

T 2N R 1E L3

2. Property Controlling
In Section

S T R

3. Miscellaneous
Property in Sec.

S T R

S T R

B:12 P:203

12/6/05

12:55 PM

Pages: 2

2005-065064 LAND CORNER RECEIPT #3849
Paula Johnson, Ingham County, Michigan



Register of Deeds Stamp & File Number

4. Lot No. _____, Recorded Plat _____
5. Private Claims _____

I, Wendy S. Parsons, in a field survey on February 14, 2005 do hereby state that under requirements of P.A. 74, Michigan P.A. of 1970, the corner points mentioned in lines 1 and 2 above were in conformance with regulations and rules therefore as required in the current manual of survey instructions of the United States Department of the Interior, Bureau of Land Management or by decree of a Court of Law and/or that the corner points mentioned in lines 3, 4 and 5 above were in conformance with the rules of the Michigan Board of Land Surveyors or by a Degree of a Court of Law; established, re-established, monumented, recovered, found as expressed below:

NOTE: Not more than 2 corners, all in the same town and range, may be recorded on this certificate.

A. Description of original monument and accessories and/or subsequent restoration:

1. FEBRUARY, 1826 - GLO SURVEY - JOSEPH WAMPLER

SET QUARTER POST AT AVERAGE DISTANCE

ELM 16 S16W 20 (13.2')

ELM 12 N42°E 20-1/2 (13.53')

K3 - L3 = 39.73 CHAINS (2622.18') L3 - M3 = 39.73 CHAINS (2622.18')

2. FEBRUARY 8, 1853 - COUNTY SURVEYOR NOTES - A. JACKSON, BOOK 4, PAGE 298-299.

(ALSO RECORDED AS VOLUME 1, PAGES 140 AND 141 IN STEADMAN INDEX)

APPLE TREE 1 1/2" N22-1/4W 55-1/2 (36.63')

L3-L4 = 157 RODS 11 LINKS (2597.76')

K3-L3 = 156 RODS 44 LINKS (2603.04')

CONTINUED ON PAGE 2

	A	B	C	D	E	F	G	H	I	J	K	L	M
1													
2	6		5		4		3		2		1		
3													
4	7		8		9		10		11		12		
5													
6	18		17		16		15		14		13		
7													
8	19		20		21		22		23		24		
9													
10	30		29		28		27		26		25		
11													
12	31		32		33		34		35		36		
13													



B. Description of corner evidence found and/or method applied in restoring or reestablishing corner:

SEARCHED APPARENT LOCATION OF CORNER. FOUND 1/2" PIPE & CAP # 11370 (STEADMAN). PIPE IS 4 FEET LONG AND IN MONUMENT BOX IN THE CENTERLINE OF COLUMBIA ROAD (ASPHALT). EXCAVATED TO 3 FEET AND NO ADDITIONAL CORNER EVIDENCE WERE FOUND. LOCATED ONE OF STEADMAN'S 1978 WITNESSES AS WELL AS THE TRAVERSE POINT SET BY THE C.E.T.A CREW SET IN 1978. STEADMAN'S WITNESSES AND THE TRAVERSE POINT ARE CONSISTENT WITH THE PREVIOUSLY RECORDED INFORMATION. REPLACED 1/2 PIPE AND CAP WITH 3/4" X 24" REBAR WITH 2-1/2" ALUMINUM CAP MARKED PA 345 INGHAM COUNTY AND STAMPED PS 47969 IN A NEW MONUMENT BOX. MEASURED IN 2005 (USING GLOBAL POSITIONING SATELLITES) AS: L3 - K3 = 2602.81', L3 - M3 = 2600.22', L3 - L4 = 2611.75'

C. Description of monument for corner and accessories established to perpetuate locating the position of the corner:

REPLACED 1/2 PIPE AND CAP WITH 3/4" X 24" REBAR WITH 2-1/2" ALUMINUM CAP MARKED PA 345 INGHAM COUNTY AND STAMPED PS 47969 IN A NEW MONUMENT BOX.
S80°E 198.70' SOUTHWEST CORNER CONCRETE HEADWALL OF BRIDGE OVER DOAN CREEK
N85°E 198.89' NORTHWEST CORNER CONCRETE HEADWALL OF BRIDGE OVER DOAN CREEK
N65°W 24.82' FOUND NAT & TAG #11370 (STEADMAN) NORTH BY NNW SIDE 28" OAK
S60°W 28.30' FOUND BAR & SMASHED CAP

Signed by W.S. Parsons

Date 11/29/05

Surveyor's Michigan License No. 47969

P.A. 345 INGHAM COUNTY
PEER APPROVED 03/22/2005

INGHAM COUNTY, INGHAM TOWNSHIP
L3

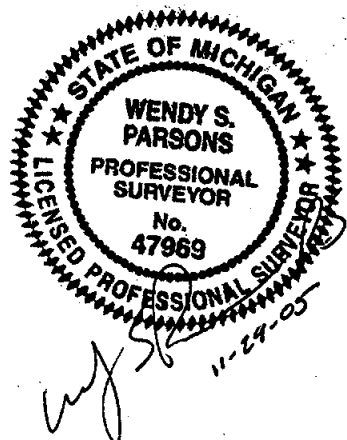
3. JANUARY 8, 1974 - P.A. 132- RICHARD W. STEADMAN (L.S. 11370), LIBER 2, PAGE 328
SET 3/4" IRON PIPE IN MONUMENT BOX
1/2" IRON PIPE NORTH 33.0'
18" OAK N.NW. 25.0'
40" STUMP SW 47.03'

4. JANUARY 9, 1974 - P.A. 74 - RICHARD W. STEADMAN (L.S. 11370), LIBER 5, PAGE 93
A. ORIGINAL MONUMENT: WOOD POST SET BY JOSEPH WAMPLER, U.S. DEPUTY SURVEYOR IN 1826; BEARING TREES 16 ELM S16 W 20 LINKS (13.2') AND 12" ELM N42°E 20-1/2 LINKS (13.53')
B. DUG HOLE IN COLUMBIA ROAD BUT FOUND NOTHING. RE-ESTABLISHED CORNER BY PROPORTIONATE MEASUREMENTS FROM EXISTING OCCUPATION EVIDENCE OF SURVEYS DATED FEBRUARY 9 AND 10, 1853, RECORDED IN VOLUME 2, PAGES 140 AND 141, COUNTY SURVEYOR RECORDS
C. SET 3/4" IRON PIPE IN MONUMENT BOX TO MARK CORNER.
WITNESSES:
1/2" IRON PIPE NORTH 33.0'
18" OAK N.NW. 25.0'
40" STUMP SW 47.03'

5. NOVEMBER 16, 1978 - C.E.T.A. FIELD NOTES - TECH SUPERVISOR - L. BRYAN OF POLARIS FOUND 1/2" BAR IN MON. BOX BY WITNESSES IN LIBER 2, PAGE 328-329, ATT. #1 PG #2 OF #2
CHECK & USED THESE WITNESSES
2. ' NORTH CL COLUMBIA ROAD
EAST & WEST NO OTHER FIELD EVIDENCE
SET TRAVERSE POINT 11.55' SOUTH & 26' WEST (SW 28.30') FROM MONUMENT. TRAVERSE POINT IS 10.6' SOUTH OF CL OF COLUMBIA ROAD

6. JULY 20, 2000 - P.A. 132 - POLARIS SURVEYING, RON M. LESTER (L.L.S. #18998), LIBER 8, PAGE 741
1" PIPE IN MONUMENT BOX. REFERS TO LIBER 5, PAGE 93
FOUND NAIL & TAG #18998 IN NORTHWEST SIDE 24" OAK, MAG. AZ. 340° 24.90'
SOUTHWEST CORNER OF BRIDGE DECK MAG. AZ. 91°, 198.90'
NORTHWEST CORNER OF BRIDGE DECK MAG. AZ. 97°, 198.72'
SET GALVANIZED NAIL AND 1 1/2" ALUMINUM TAG STAMPED "PS 18998 WITNESS" NORTH SIDE 2-12" MAPLE
MAG. AZ. 105°. 125.78'
L3-K3 = 2602.92'

NO ADDITIONAL INFORMATION



LAND CORNER RECORDATION CERTIFICATE
Filing Requirement of Act 74, Mich. P.A. 1970

For corners in
INGHAM TOWNSHIP
INGHAM COUNTY

Located In: Corner Code #

1. Public Land Survey

T 2N R 1E L4

2. Property Controlling
In Section

S T R

3. Miscellaneous
Property in Sec.

S T R

S T R

B: 12 P: 221 12/12/05 8:45 AM
2005-065971 LAND CORNER Receipt #4018
Paula Johnson, Ingham County, Michigan

Pages: 2



Register of Deeds Stamp & File Number

4. Lot No. , Recorded Plat

5. Private Claims

I, Wendy S. Parsons, in a field survey on February 17, 2005 do hereby state that under requirements of P.A. 74, Michigan P.A. of 1970, the corner points mentioned in lines 1 and 2 above were in conformance with regulations and rules therefore as required in the current manual of survey instructions of the United States Department of the Interior, Bureau of Land Management or by decree of a Court of Law and/or that the corner points mentioned in lines 3, 4 and 5 above were in conformance with the rules of the Michigan Board of Land Surveyors or by a Degree of a Court of Law; established, re-established, monumented, recovered, found as expressed below:

NOTE: Not more than 2 corners, all in the same town and range, may be recorded on this certificate.

A. Description of original monument and accessories and/or subsequent restoration:
1. CORNER WAS NOT SET BY GLO

2. FEBRUARY 8, 1853 - COUNTY SURVEYOR NOTES -

A. JACKSON, BOOK 4, PAGE. 298

SUGAR 12" N43W 4-3/4 (3.13')

SUGAR 8" N62-1/2E 19 (12.54')

K4 - L4 = 158 RODS (2607') L4 - L3 = 157 RODS 11 LINKS (2597.76')

	A	B	C	D	E	F	G	H	I	J	K	L	M
1													
2	6		5		4		3		2		1		
3													
4	7		8		9		10		11				
5													
6	18		17		16		15		14		13		
7													
8	19		20		21		22		23		24		
9													
10	30		29		28		27		26		25		
11													
12	31		32		33		34		35		36		
13													

CONTINUED ON PAGE 2

B. Description of corner evidence found and/or method applied in restoring or reestablishing corner:

SEARCHED APPARENT LOCATION OF CORNER. LOCATED 1/2" IRON ON THE NORTH SIDE OF ROTTED 8" WOOD FENCE POST, WITH FENCE LINES RUNNING TO THE EAST, WEST AND SOUTH. EXCAVATED TO 3 FEET, FOUND NO ADDITIONAL EVIDENCE OF CORNER. TWO (2) FOUND WITNESSES AND TIES TO ADJOINING GOVERNMENT CORNERS ARE CONSISTENT WITH PREVIOUSLY RECORDED INFORMATION. LOCATION OF FOUND IRON IS 1.60 FEET NORTH AND 3.27' EAST OF THE INTERSECTION OF THE EAST-WEST AND NORTH-SOUTH 1/4 LINES. ACCEPTED LOCATION OF FOUND IRON AS PERPETUATION OF THE CENTER OF SECTION AS SET BY THE COUNTY SURVEYOR. REPLACED FOUND IRON WITH 3/4" X 24" REBAR WITH 2-1/2" ALUMINUM CAP MARKED PA 345 INGHAM COUNTY AND STAMPED PS 47969.

MEASURED IN 2005 (USING GLOBAL POSITIONING SATELLITES) AS: L4 - L3 = 2611.75', L4 - M4 = 2591.72', L4 - L5 = 2619.88', L4 - K4 = 2612.51'

C. Description of monument for corner and accessories established to perpetuate locating the position of the corner:

REPLACED FOUND IRON AT BASE OF ROTTED 8" WOOD FENCE POST, WITH 3/4" X 24" REBAR WITH 2-1/2" ALUMINUM CAP MARKED PA 345 INGHAM COUNTY AND STAMPED PS 47969.
N80°E 45.85' FOUND NAIL & TAG #18998 (RON LESTER) NORTH SIDE 40" MAPLE
S30°E 16.00' SET NAIL & TAG #31603 (DOUGLAS RICHARDSON) WEST SIDE 10" ELM
N45°W 39.15' FOUND NAIL & TAG #18998 (RON LESTER) SE FACE 12" IRONWOOD
N80°W 16.82' SET NAIL & TAG #31603 (DOUGLAS RICHARDSON) NORTH SIDE 16" CHERRY

P.A. 345 INGHAM COUNTY

PEER APPROVED 3/22/2005 M



Signed by

WSP *PS*

Date

10/05/05

Surveyor's Michigan License No.

47969

FORM APPROVED BY MICHIGAN STATE BOARD OF PROFESSIONAL SURVEYORS, JAN. 28, 1971
REVISED MAY 14, 1976
REVISED JAN., 1983
REVISED OCT., 1995

INGHAM COUNTY, INGHAM TOWNSHIP
L4

3 JULY 14, 1988 - P.A. 74 - RON M. LESTER (RLS #18998), LIBER 6, PAGE 384

- A. NO RECORD OF CORNER BEING ESTABLISHED IN ORIGINAL GOVERNMENT SURVEY. A. JACKSON, COUNTY SURVEYOR, CALLS FOR ESTABLISHMENT OF CORNER IN A SURVEY DATED 2/9/1853. CALLED FOR POST WITH WITNESSES OF: W. OAK 30" S60-1/2E 8-3/4 LINKS (5.78') AND 12" SUGAR N43°W, 4-3/4 LINKS (3.13')
- B. FIELD INVESTIGATION BY THIS SURVEYOR REVEALED AN OLD FENCE INTERSECTION WITH FENCES EAST, WEST, AND SOUTH. NO EVIDENCE OF ACCESSORIES AS CALLED FOR BY A. JACKSON. MEASURED NORTH 2611.5' (JACKSON 2597.76') MEASURED WEST 2612.4' (JACKSON - 2607.0') MEASURED SOUTH 2619.8' AND MEASURED EAST 2591.7' THIS LOCATION FALLS SOME 1.6' NORTH AND 3.3' EAST OF COMPUTED INTERSECTION OF 1/4 LINES. ACCEPTED FENCE CORNER POST AS; LOCATION OF CENTER OF SECTION AS ESTABLISHED AND PERPETUATED BY COUNTY SURVEYOR
- C. 1/2" BAR ON NORTH SIDE AT BASE OF OLD FENCE CORNER POST AS DESCRIBED ABOVE. FENCES EAST, WEST AND SOUTH
SET NAIL AND TAG ON SOUTH SIDE 12" IRONWOOD, NORTHWEST, 38.9'
SET NAIL AND TAG ON NORTH SIDE 36" MAPLE, EAST, 45.9'
SET NAIL AND TAG ON SOUTH SIDE 15" ASH, NORTH, 12.2'
SET NAIL AND TAG ON NORTH SIDE LEANING 15" CHERRY, WEST 11.8'

4. DECEMBER 20, 1999 - P.A.132 - ENGER SURVEYING & ENGINEERING, RONALD L. ENGER (L.L.S. #28409). LIBER 8, PAGE 844

RECORDED IN LIBER 4, PAGE 242 (PA 74 REFERS TO K3 & K4, T2N,R1E)
1/2" BAR IN NORTH SIDE OF EAST-WEST - SOUTH FENCE CORNER
NAIL AND TAG #18998 SOUTH SIDE 12" IRONWOOD, NORTHWEST, 38.92'
NAIL AND TAG #18998 NORTH SIDE 37" MAPLE, EAST, 45.87'
NAIL AND TAG #18998 SOUTH SIDE 15" ASH, N6°W, 12.20'
NAIL AND TAG ON NORTH SIDE 19" CHERRY, N85°W 11.82'
L4 - K4 = 2612.75'

NO ADDITIONAL INFORMATION



WJ S. P.S.
10/5/05

LAND CORNER RECORDATION CERTIFICATE
Filing Requirement of Act 74, Mich. P.A. 1970

For corners in
INGHAM TOWNSHIP
INGHAM COUNTY

Located In: Corner Code #

1. Public Land Survey

T 2N R 1E L5

T R

T R

T R

2. Property Controlling
In Section

S T R

S T R

3. Miscellaneous
Property in Sec.

S T R

S T R

Paula Johnson-
INGHAM COUNTY
REGISTER OF DEEDS
OFFICIAL SEAL



L-12 P-73

CRNR 17.00

2005-031508



2005-031508

Page: 1 of 2

08/16/2005 08:33r

Register of Deeds Stamp & File Number

4. Lot No. , Recorded Plat
5. Private Claims

I, Wendy S. Parsons, in a field survey on February 16, 2005 do hereby state that under requirements of P.A. 74, Michigan P.A. of 1970, the corner points mentioned in lines 1 and 2 above were in conformance with regulations and rules therefore as required in the current manual of survey instructions of the United States Department of the Interior, Bureau of Land Management or by decree of a Court of Law and/or that the corner points mentioned in lines 3, 4 and 5 above were in conformance with the rules of the Michigan Board of Land Surveyors or by a Degree of a Court of Law; established, re-established, monumented, recovered, found as expressed below:

NOTE: Not more than 2 corners, all in the same town and range, may be recorded on this certificate.

A. Description of original monument and accessories and/or subsequent restoration:

1. FEBRUARY, 1826 - GLO SURVEY - Joseph Wampler

Set quarter post at ave. fw

Ash 17" N83°W 24 ½ (16.17') *gone

M 9" North 26 (17.16') *gone

*Elm 4" N49°W 37 ½ (24.75') new

*Elm 16" S24°E 69 (45.54') new

L5 - K5 = 39.64 ch (2616.24') L5 - M5 = 39.64 ch (2616.24')

2. DECEMBER 30, 1859 - COUNTY SURVEYOR NOTES - Book 4, Page 134 - A. Jackson

Maple 9" North 26 links (17.16')

Sugar 16" S65°E 8 ½ links (5.61')

L5-K5 = 156 rods 46 links (2604.36') L5-L6 = 160 rods 14 links (2649.24')

3. MARCH 19, 1878, MARGINAL NOTE BY T.J. BROWN ON COUNTY SURVEYOR NOTES - Book 4, Page 134

"Note at No 3 [L5]: This Government corner was recorded by A. Jackson and by neglect was nearly lost - but by measurement and careful search was found beneath the surface where the post had been broken off and became quite obscure. New witness trees were marked as follows Elm 4 inches diameter bears N 49°W 37½ links [24.75'], Elm 16 inches diameter bears S24°E 69 links [45.54']"

4. PRIOR TO 1969 - INGHAM COUNTY ROAD COMMISSION NOTES - (AS DESCRIBED BY STEADMAN IN ITEM A10 BELOW)

In the County Road Commission book "County Road Ledger" on Page 183 is the notation: "Set boat spike from old witness; 1-1/8" iron ba ft., bolt West 5 ft., 20" Elm North 19.8 ft."

CONTINUED ON PAGE 2

B. Description of corner evidence found and/or method applied in restoring or reestablishing corner:
Searched apparent location for corner. Found three irons in the centerline of Iosco Road (gravel): A ¾" pipe, with square head (bent - replaced with ½" iron rod), which is 5.10 feet West of a Found Iron Bar. This Found Iron Bar was found to be 5.05' West of a Found Iron Rod with a smashed cap. A 12" Clay CMP Culvert runs underneath center iron. Excavated all three points to 2.0 feet and hit baseball sized rocks beneath Easterly and Westerly points. At location of center point, hit top of culvert at 2.0 feet. No additional evidence was located. Found multiple witnesses. Analysis of witness and distances to adjoining Government Corners clearly show that the center point is a perpetuation of the boat spike set by the Ingham County Road Commission set prior to 1969 and that point is the continuation of the post located by Deputy County Surveyor in 1878. Replaced center point (Found Iron Bar) with ¾" x 24" rebar with 2-1/2" aluminum cap marked PA 345 INGHAM COUNTY and stamped PS 47969. 2005 measurement to adjoining Government Corners: L5-K5 = 2598.91', L5 - L4 = 2619.88', L5 - M5 = 2597.51', L5 - L6 = 2639.68'

SEE DETAIL ON PAGE 2

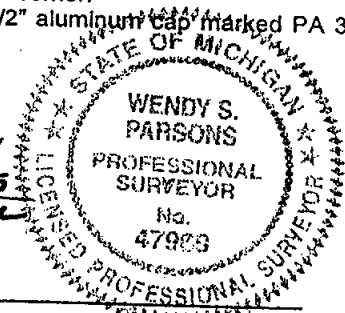
C. Description of monument for corner and accessories established to perpetuate locating the position of the corner:
Replaced center point (Found Iron Bar) in the centerline of Iosco Road with ¾" x 24" rebar with 2-1/2" aluminum cap marked PA 345 INGHAM COUNTY and stamped PS 47969.
N60°W 59.92' Set Nail & Tag #31603 South Face Maple
N30° 25.07' Set Nail & Tag #28409 Northeast Face 12" Maple
N60°E 83.37' Set Nail & Tag #31603 South Face 24" Cherry
South 34.45' Found PK Nail East Face Power Pole
North 15.5' Set PK Nail North End CMP Culvert
South 23.5' Set PK Nail South end CMP Culvert

Signed by WJSR PS.

Date 6/3/05

Surveyor's Michigan License No. 47969

P.A. 345 INGHAM COUNTY
PEER APPROVED 3/22/005



INGHAM COUNTY, INGHAM TOWNSHIP
L5 (page 2)

5. JULY 16, 1975 - PA 74 - (Liber 3, Page 433) George M. Young R.L.S. # 17640

A. Original monument and accessories obliterated

B. Found 3/4" iron with cap under road surface

C. Found 3/4" iron

Nail in 12" Cherry N 45° W 83.85'

Nail in 36" Maple N 59.50'

Nail in Power Pole S 34.50'

6. JULY 17, 1975 - PA 132 - (Liber 2, Page 476) George M. Young R.L.S. # 17640

Nail in 12" Cherry N 45° W 83.85'

Nail in 36" Maple North 59.50'

Nail in Power Pole South 34.50'

Found 3/4" Iron

7. MAY 2, 1977 - PA 132 - (Liber 3, Page 132) Austin C. Williams R.L.S. # 21275

References: Liber 3, Page 433.

8. FEBRUARY 4, 1978 - PA 132 - (Liber 3, Page 228)

John A. Sellek R.L.S. # 2585

Nail in 12" cherry N 45° E 83.85'

Nail in 36" maple North 59.50'

Nail in power pole South 34.50'

Found 3/4" iron with cap center of losco road

9. FEBRUARY 5, 1978 - PA 74 - (Liber 4, Page 134) John A. Sellek R.L.S. # 2585

A. 1/4 corner between Sec. 12 and Sec. 13, found 3/4" iron

and cap in center of losco Rd; Nail in 12" Cherry N 45°

E (previously recorded as N 45° W) 83.85', Nail in 36"

Maple North 59.50', Nail in power pole South 34.50'

10. JANUARY 9, 1979 - PA 74 - (Liber 5, Page 144)

Richard W. Steadman R.L.S. # 11370

A. Original Monument: wood post set by Joseph Wampler, U.S. Deputy Surveyor in 1826; bearing trees: 17" Ash N83°W 24-1/2 lks. and 9" Maple North 26 lks. On Page 137 of Volume 1, Ingham County Surveyor's Records, is a marginal note by T. J. Brown, Deputy County Surveyor dated March 13, 1878, indicating that he found the bottom of the old post and marked new bearing trees: 4" Elm N49°W 37-1/2 lks. And 16" Elm S24°E 69 lks. In the County Road Commission book "County Road Ledger" on Page 183 is the notation: "Set boat spike from old witness; 1-1/8" iron bar East 5 ft., bolt West 5 ft., 20" Elm North 19.8 ft."

B. Dug hole in losco Road opposite fence line and found the Road Commission's boat spike; also found iron bar 5 ft. East.

C. Replaced boat spike with 3/4" iron pipe to mark the corner. Witnesses:

22" Cottonwood .S.E. 33.73 ft.

36" Maple N.N.W. 59.31 ft.

3" Maple W.N.W. 60.23 ft.

1-1/8" square iron bar East 4.95 ft.

11. SEPTEMBER 1982 - PA 132 - (Liber 4, Page 644)

Austin C. Williams R.L.S. # 21275

Nail in 12" Cherry N45°E 83.85'

Nail in 36" Maple North 59.50'

Nail in power pole South 34.50'

12. AUGUST 12, 1996 - PA 132 - (Liber 8, Page 836)

Ronald L. Enger R.L.S. # 28409

(Liber 3, Page 433)

3/4" Iron Pipe on Centerline of losco Road

PK Nail and Washer E. Side of Power Pole, Az. 172° 34.48'

Nail and Tag (18998) W. Side 40" Maple, Az. 356° 58.83'

Nail and Tag (PS 28409) NE Side Twin 10" Maple, Az. 333° 25.03'

Nail and Tag (18989) SW Side 8" Maple, Az. 315° 32.76'

13. JANUARY 7, 2000 - PA 132 - (Liber 8, Page 844)

Ronald L. Enger R.L.S. # 28409

Found 1/2" Bar & Cap #17640 next to old steel fence post in pile of rocks.

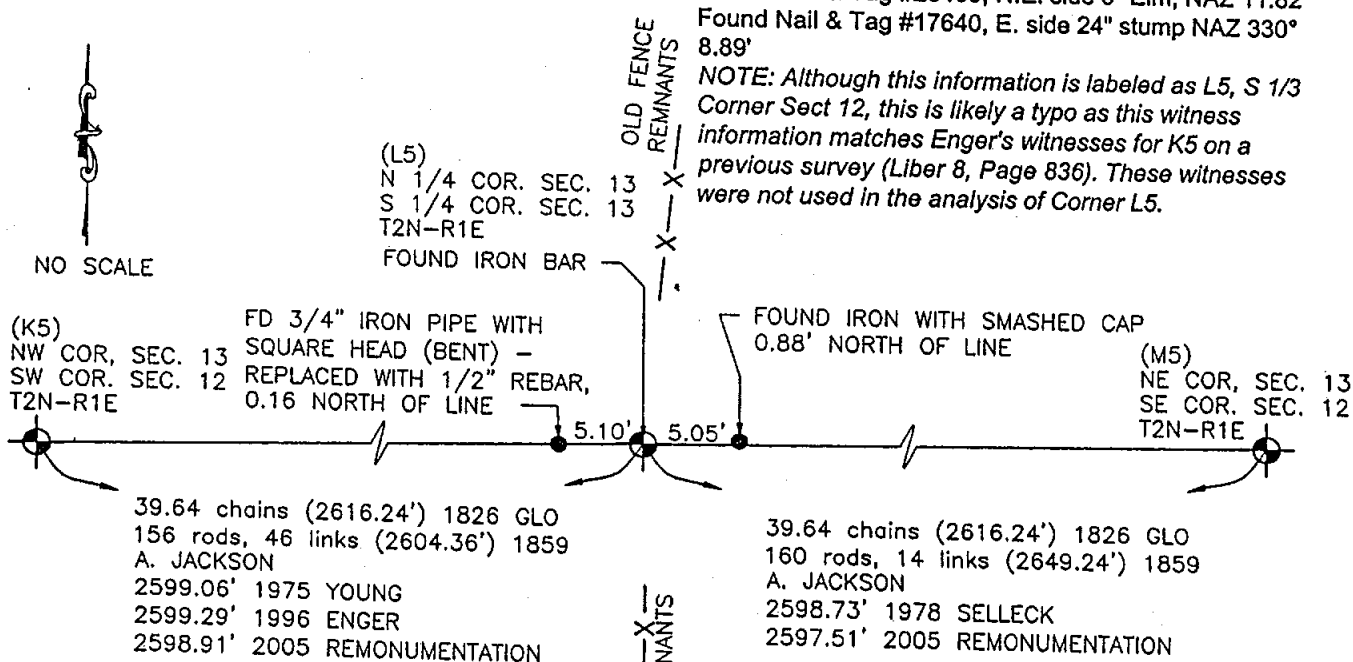
Found Nail & Tag #18989, S. side old stump NAZ 48° 13.60'

Found Nail & Tag #18989, W. side 6" Ash NAZ 182° 3.72'

Found Nail & Tag #28409, N.E. side 6" Elm, NAZ 11.82'

Found Nail & Tag #17640, E. side 24" stump NAZ 330° 8.89'

NOTE: Although this information is labeled as L5, S 1/3 Corner Sect 12, this is likely a typo as this witness information matches Enger's witnesses for K5 on a previous survey (Liber 8, Page 836). These witnesses were not used in the analysis of Corner L5.



2005-031508
Page: 2 of 2
06/16/2005 08:33r

LAND CORNER RECORDATION CERTIFICATE
Filing Requirement of Act 74, Mich. P.A. 1970

For corners in
INGHAM TOWNSHIP
INGHAM COUNTY

Located In: Corner Code #

1. Public Land Survey

T 2N R 1E M3

2. Property Controlling
In Section

S

3. Miscellaneous
Property in Sec.

S

S

4. Lot No. , Recorded Plat

5. Private Claims

I, Wendy S. Parsons, in a field survey on February 11, 2005 do hereby state that under requirements of P.A. 74, Michigan P.A. of 1970, the corner points mentioned in lines 1 and 2 above were in conformance with regulations and rules therefore as required in the current manual of survey instructions of the United States Department of the Interior, Bureau of Land Management or by decree of a Court of Law and/or that the corner points mentioned in lines 3, 4 and 5 above were in conformance with the rules of the Michigan Board of Land Surveyors or by a Degree of a Court of Law; established, re-established, monumented, recovered, found as expressed below:

NOTE: Not more than 2 corners, all in the same town and range, may be recorded on this certificate.

A. Description of original monument and accessories and/or subsequent restoration:

1. FEBRUARY, 1826 - GLO SURVEY - JOSEPH WAMPLER
SET P. COR. OF 1&12

ELM 16 N46-1/2W 8 (5.28')

HICKORY 8 S17-1/2W 16 (10.56')

M4 - M3 = 40 CHAINS (2640') M3 - M2 = 40 CHAINS (2640')

2. JANUARY 22, 1869 - COUNTY SURVEYOR NOTES - T.J. BROWN, BOOK 3, PAGE 13
A POST FROM WHICH A SUGAR 8 IN DIAMETER BEARS N40°W 68-1/2 LINKS (45.21')

3. APRIL 10, 1974 - P.A. 74 - RICHARD W. STEADMAN (LS #11370), LIBER 5, PAGE 94

A. ORIGINAL MONUMENT: WOOD POST SET BY JOSEPH WAMPLER, U.S. DEPUTY SURVEYOR IN 1826; BEARING TREES 16" ELM N46-1/2W 8 LINKS (5.28') AND 8" HICKORY S17-1/2W 16 LINKS (10.56').

B. DUG HOLE IN INTERSECTION OF COLUMBIA AND MEECH ROADS BUT FOUND NOTHING. RE-ESTABLISHED CORNER ON A SOUTHERLY PROJECTION OF THE LINE BETWEEN THE CORRESPONDING CORNER FOR T2N, R2E, AND THE QUARTER CORNER NEXT NORTH FOR T2N, R1E, AND AT USPLS JOG DISTANCE FOR T2N, R2E.

C. SET 3/4" IRON PIPE IN MONUMENT BOX TO MARK THE CORNER.

WITNESSES:

10" ASH SSE 63.43'

14" ASH SE 36.77'

26" ASH ENE 22.80'

CORNER FOR T2N, R2E, (SET 3/4" IRON PIPE AND MONUMENT BOX OVER STONE)
NORTH 104 LINKS = 68.64 FEET

CONTINUED ON BACK

B. Description of corner evidence found and/or method applied in restoring or reestablishing corner:

SEARCHED APPARENT LOCATION OF CORNER. FOUND 3/4" PIPE IN MONUMENT BOX, 2.5 FEET EAST OF THE CENTERLINE OF MEECH ROAD AND 5 FEET NORTH OF THE CENTERLINE OF COLUMBIA ROAD. EXCAVATED TO 3.2 FEET AND FOUND NO ADDITIONAL CORNER EVIDENCE. LOCATED FOUR (4) WITNESSES. MEASURED DISTANCES TO FOUND WITNESSES AND ADJOINING GOVERNMENT CORNERS WERE FOUND TO BE CONSISTENT WITH PREVIOUSLY RECORDED INFORMATION. REPLACED 3/4" PIPE WITH 3/4" X 24" REBAR WITH 2-1/2" ALUMINUM CAP MARKED PA 345 INGHAM COUNTY AND STAMPED PS 47969 IN MONUMENT BOX. MEASURED IN 2005 (USING GLOBAL POSITIONING SATELLITES) AS: M3 - L3 = 2600.22', M3 - A3 (WHITE OAK TOWNSHIP) = 68.48', M3 - M4 = 2636.21'

C. Description of monument for corner and accessories established to perpetuate locating the position of the corner:

REPLACED 3/4" PIPE WITH 3/4" X 24" REBAR WITH 2-1/2" ALUMINUM CAP MARKED PA 345 INGHAM COUNTY AND STAMPED PS 47969 IN MONUMENT BOX.

NORTH 68.48' ROD AND CAP "PA 345, PS 11370", LIBER 8, PAGE 233 (CORNER A 8, WHITE OAK TOWNSHIP)

N72°E 22.40' FOUND NAIL & TAG #13039 (ARDEN PIERSON) NORTH SIDE 42" ASH

S23°E 62.99' FOUND NAIL & TAG #18998 (RON LESTER) WEST SIDE 24" ASH

N69°W 45.00' FOUND NAIL & TAG #13039 (ARDEN PIERSON) TOP WOOD GUARDRAIL POST

N40°W 29.42' FOUND NAIL & TAG #13039 (ARDEN PIERSON) TOP WOOD GUARDRAIL POST

Signed by Wendy S. Parsons

Date 11/29/05

Surveyor's Michigan License No.

47969

FORM APPROVED BY MICHIGAN STATE BOARD OF PROFESSIONAL SURVEYORS, JAN. 28, 1971
P.A. 345 INGHAM COUNTY
PEER APPROVED 03/22/2005 M

REVISED MAY 14, 1975
REVISED JAN., 1983
REVISED OCT., 1995

B:12 P:202 12/6/05 12:55 PM Pages: 2
2005-065063 LAND CORNERS Receipt #3849
Paula Johnson, Ingham County, Michigan



Register of Deeds Stamp & File Number

1	A	B	C	D	E	F	G	H	I	J	K	L	M
2		6		5		4		3		2		1	
3													
4		7		8		9		10		11		12	
5													
6		18		17		16		15		14		13	
7													
8		19		20		21		22		23		24	
9													
10		30		29		28		27		26		25	
11													
12		31		32		33		34		35		36	
13													



INGHAM COUNTY, INGHAM TOWNSHIP
M3

4. DECEMBER 5, 1978 - C.E.T.A. FIELD NOTES - TECH SUP'R - L. BRYAN OF POLARIS
FD 1/2" IRON W/CAP RLS 11370 & WITNESSES AS FOLLOWS:

1. TRAVERS POINT 10,043 NORTH 68.57'
2. TRAVERSE POINT 10,152 SOUTH 3.91'
3. ICRP N&T SOUTH SIDE OF 24" OAK S60°E, 37.30'
4. 2' EAST OF CL MEECH

HAND WRITTEN NOTE: ARROW POINTING TO M3 "1/3/79 REC BY STEADMAN

5. JUNE 24, 1982 - P.A. 132 - HAROLD J. OLIVER (RLS #8201) - LIBER 4, PAGE 568-569
REFERS TO LIBER 5, PAGE 94
M3-A3 (WHITE OAK) = 68.64'

6. JANUARY 4, 1996, P.A.132 - ENGER SURVEYING, RONALD ENGER (L.L.S. #28409), LIBER 7, PAGE 1035
WITNESSES LISTED ARE FOR A3 OF T2N,R2E, ONE OF WHICH REFERS TO M3, T2N,R1E:

3/4" PIPE IN MON BOX

1/2" BAR IN MON BOX, NORTH 68.64'

7. NOVEMBER 24, 2001 - P.A.132 - RON HELSEL (RLS #18994), LIBER 8, PAGE 950
(LIBER 5, PAGE 94 OF CORNERS)

3/4" PIPE IN MON. BOX, 2' NORTH OF CENTERLINE OF COLUMBIA ROAD AND 2' EAST CENTERLINE MEECH
ROAD

NAIL & TAG #13039 TOP CENTER OF WEST END GUARD RAIL POST NAZ 288° (N72°W) 44.97'

NAIL & TAG #13039 TOP CENTER OF GUARD RAIL POST, NZ 319° (N41°W) 29.42'

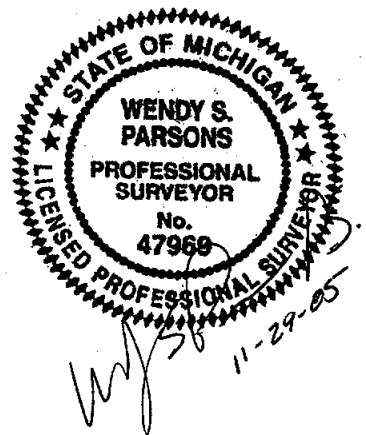
NAIL & TAG #13039 NW/SIDE 34" OAK, NAZ 80° (N80°E) 22.31'

NAIL & TAG #13039 EAST/SIDE 20" OAK, NAZ 156° (S24°E) 64.01'

NORTH 68.64' TO A-3 OF T2N, R3E (LIBER 5, PAGE 93 OF CORNERS)

M3 - A3 = 68.64'

NO ADDITIONAL INFORMATION



LAND CORNER RECORDATION CERTIFICATE
Filing Requirement of Act 74, Mich. P.A. 1970

For corners in
INGHAM TOWNSHIP
INGHAM COUNTY

Located In: Corner Code #

1. Public Land Survey

T 2N R 1E M4

2. Property Controlling
In Section

S T R

3. Miscellaneous
Property in Sec.

S T R

B:12 P:201 12/6/05 12:55 PM
2005-065062 LAND CORNER RECEIPT #3849
Paula Johnson, Ingham County, Michigan

Pages: 2



Register of Deeds Stamp & File Number

4. Lot No. _____, Recorded Plat _____
5. Private Claims _____

I, Wendy S. Parsons, in a field survey on February 11, 2005 do hereby state that under requirements of P.A. 74, Michigan P.A. of 1970, the corner points mentioned in lines 1 and 2 above were in conformance with regulations and rules therefore as required in the current manual of survey instructions of the United States Department of the Interior, Bureau of Land Management or by decree of a Court of Law and/or that the corner points mentioned in lines 3, 4 and 5 above were in conformance with the rules of the Michigan Board of Land Surveyors or by a Degree of a Court of Law; established, re-established, monumented, recovered, found as expressed below:

NOTE: Not more than 2 corners, all in the same town and range, may be recorded on this certificate.

A. Description of original monument and accessories and/or subsequent restoration:

1. FEBRUARY, 1824 - GLO SURVEY - JOSEPH WAMPLER

SET P. COR OF 12 & 13

ASH 9 N37W 13 (8.58')

ASH 9 S-W 29 (19.14')

M5 - M4 = 40 CHAINS (2640') M4 - M3 = 40 CHAINS (2640')

2. AUGUST 3, 1880 - COUNTY SURVEYOR NOTES - T.J. BROWN, BOOK 3, PAGE 78

B. ASH 12 N67°W 30-1/8 (19.88')

ELM 12 S25-1/2 W 127-1/2 (84.15')

NEW ELM 6 N27-3/4E 88 (58.08')

3. JUNE 22, 1973 - P.A. 74 - RICHARD W. STEADMAN (RLS #11370), LIBER 5, PAGE 147

A. ORIGINAL MONUMENT: WOOD POST SET BY JOSEPH WAMPLER, U.S. DEPUTY SURVEYOR IN 1824; BEARING TREES: 8" TAMARACK N14°W 13 LINKS (8.58') AND 7" TAMARACK S78°W 06-1/2 LINKS (4.29'). I FIND NO OTHER REFERENCE TO THIS CORNER IN PUBLIC RECORDS.

B. DUG HOLE IN MEECH ROAD OPPOSITE FENCE WEST AND ABOUT 2 FEET BELOW THE SURFACE, FOUND A LONG, POINTED STONE WITH A HUB CAP ALONGSIDE, AND BROKEN CROCKERY AND SMALL STONES AROUND.

C. RAISED LOCATION OF STONE TO SURFACE WITH 3/4" IRON PIPE AND SET MONUMENT BOX

24" MAPLE WNW 23.08'

22" MAPLE SSE 131.51'

WOOD CULVERT POST NNE 83.03'

CONTINUED ON BACK

B. Description of corner evidence found and/or method applied in restoring or reestablishing corner:

SEARCHED AT APPARENT LOCATION OF CORNER. FOUND 1/2" PIPE WITH CAP #11370 (RICHARD STEADMAN) IN MONUMENT BOX. EXCAVATED TO 2 FEET AND FOUND LARGE STONE. UNABLE TO REMOVE OR BREAK AND IS APPARENTLY STONE DISCUSSED IN ITEM A3 ABOVE. TIES TO THREE (3) WITNESSES AND ADJACENT GOVERNMENT CORNERS ARE CONSISTENT WITH PREVIOUSLY RECORDED INFORMATION. REPLACED 1/2" PIPE AND CAP WITH 3/4" X 24" REBAR WITH 2-1/2" ALUMINUM CAP MARKED PA 345 INGHAM COUNTY AND STAMPED PS 47969 IN MONUMENT BOX. MEASURED IN 2005 (USING GLOBAL POSITIONING SATELLITES) AS: M4 - A4 (WHITE OAK TOWNSHIP) = 84.59', M4 - M3 = 2636.21', M4 - M5 = 2633.73', M4 - L4 = 2591.72'

C. Description of monument for corner and accessories established to perpetuate locating the position of the corner:

REPLACED 1/2" PIPE AND CAP WITH 3/4" X 24" REBAR WITH 2-1/2" ALUMINUM CAP MARKED PA 345 INGHAM COUNTY AND STAMPED PS 47969 IN MONUMENT BOX.

NORTH 84.59' FOUND 3/4" BAR IN MONUMENT BOX (WHITE OAK, A4)

S25°E, 76.32' FOUND NAIL & TAG #28414 (MAURICE MAHIEU) EAST SIDE 18" QUAD MAPLE

S15°E 132.00' FOUND NAIL & TAG #18998 (RON LESTER) WEST SIDE 48" MAPLE

N20°W 97.87' SET MAG NAIL IN CENTERLINE OF CULVERT

P.A. 345 INGHAM COUNTY
PEER APPROVED 3/22/2005

Signed by Wendy S. Parsons

Date 11/29/05

Surveyor's Michigan License No. 47969

INGHAM COUNTY, INGHAM TOWNSHIP
M4

JANUARY 23, 1978 - P.A.74 - JOHN SELLECK LS #2585, LIBER 4, PAGE 134

- A. EAST ½ CORNER OF SEC. 12, FOUND ¾" IRON AND CAP WITH RLS # 11370 STAMPED IN IT IN MONUMENT BOX IN CENTER OF INTERSECTION OF MEECH ROAD IN LINE WITH E/W FENCE LINES; NAIL IN 15" WILLOW 67.97' NAIL IN 27" BEECH WEST 23.10', NAIL IN 36" BEECH S20°E 131.55'
- B. NO INFORMATION FOR M4 LISTED
- C. NO INFORMATION FOR M4 LISTED

SEPTEMBER, 1982 - P.A.132 - AUSTIN WILLIAMS (L.S. 21275) LIBER 4, PAGE 644
NAIL IN 15" WILLOW S80°E 67.97'
NAIL IN 27" BEECH WEST 23.10'
NAIL IN 36" BEECH S20°E 131.55'

SEPTEMBER 29, 1998 - P.A.132 - WOLVERINE ENGINEERS & SURVEYORS, MAURICE H. MAHIEU (L.L.S. #28414), LIBER 8, PAGE 327)
½" PIPE #11370

NAIL & TAG #28414 SOUTH SIDE 36" MAPLE, N85°W, 23.08'
NAIL & TAG #28414 EAST SIDE QUAD 18" MAPLE, S25°E, 76.32'
NAIL & TAG #18998 WEST SIDE 48" MAPLE, S15°E, 132.00'
M4 - A4 (T2N,R2E) = 84.60', M4 - A5 (T2N,R2E) = 2535.52' M4 - M5 = 2634.49'

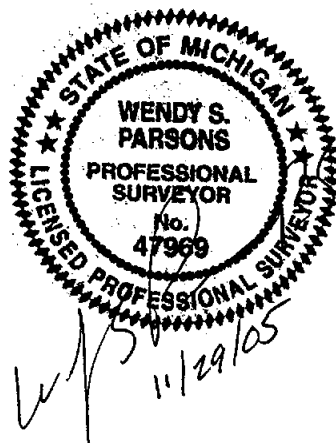
FEBRUARY 17, 2003 - P.A.132 - WOLVERINE ENGINEERS AND SURVEYORS, MAURICE H. MAHIEU (PS #28414), LIBER 8, PAGE 1130
½" PIPE #11370

NAIL & TAG #28414 SOUTH SIDE 36" MAPLE, N85°W, 23.06'
NAIL & TAG #28414 EAST SIDE QUAD 18" MAPLE, S25°E, 76.32'
NAIL & TAG #18998 WEST SIDE 48" MAPLE, S15°E, 132.00'
M4 - A4 (T2N,R2E) = 84.60'

SEPTEMBER 17, 2003 - P.A.132 - WOLVERINE ENGINEERS AND SURVEYORS, MAURICE H. MAHIEU (PS #28414), LIBER 8, PAGE 1260
½" PIPE #11370

NAIL & TAG #28414 SOUTH SIDE 36" MAPLE, N85°W, 23.06'
NAIL & TAG #28414 EAST SIDE QUAD 18" MAPLE, S25°E, 76.32'
NAIL & TAG #18998 WEST SIDE 48" MAPLE, S15°E, 132.00'
M4 - A4 (T2N,R2E) = 84.60'

NO ADDITIONAL INFORMATION



LAND CORNER RECORDATION CERTIFICATE
Filing Requirement of Act 74, Mich. P.A. 1970

For corners in
INGHAM TOWNSHIP
INGHAM COUNTY

Located In:

Corner Code #

1. Public Land Survey

T 2N R 1E
T R
T R
T R
S T R
S T R
S T R
S T R

M5

Paula Johnson-
INGHAM COUNTY
REGISTER OF DEEDS
OFFICIAL SEAL



L-12 P-70

CRNR 17.00

2005-031506

2005-031506

Page: 1 of 2
06/16/2005 08:33r

Register of Deeds Stamp & File Number

4. Lot No. _____, Recorded Plat _____
5. Private Claims _____

I, Wendy S. Parsons, in a field survey on November 1, 2004 do hereby state that under requirements of P.A. 74, Michigan P.A. of 1970, the corner points mentioned in lines 1 and 2 above were in conformance with regulations and rules therefore as required in the current manual of survey instructions of the United States Department of the Interior, Bureau of Land Management or by decree of a Court of Law and/or that the corner points mentioned in lines 3, 4 and 5 above were in conformance with the rules of the Michigan Board of Land Surveyors or by a Degree of a Court of Law; established, re-established, monumented, recovered, found as expressed below:

NOTE: Not more than 2 corners, all in the same town and range, may be recorded on this certificate.

A. Description of original monument and accessories and/or subsequent restoration:

1. FEBRUARY, 1826 - GLO SURVEY - Joseph Wampler

Set p cor of 12 & 13 fw

Ash 9" N37°W 43 (28.38')

Ash 9" S-W 29 (19.14')

M5 - L5 = 39.64 ch (2616.24') M6 - M5 = 40 CH (2640') M6 - A6 (WHITE OAK) = NORTH 150 (99')

2. DECEMBER 30, 1859 - COUNTY SURVEYOR NOTES - Book 4, Page 134 - A. Jackson

Ash 9" N37°W 43 links (28.38')

Ash 9" S45°W 29 links (19.14')

3. FEBRUARY 4, 1978 - PA 132 - (Liber 3, Page 228) John A. Sellek R.L.S. # 2585

Nail in 16" Elm S 70° W 74.7'

Nail in 24" Maple N 70° W 67.5'

Nail in TP#505 N 45° E 39.09'

Found 3/4" iron with cap in mon box intersection of losco and Meech roads

Continued on Back

B. Description of corner evidence found and/or method applied in restoring or reestablishing corner:

Searched at apparent location of corner. Found iron and cap #11370 (Richard Steadman) in monument box with cracked lid, 1.7' East of centerline of Meech Road. Excavated to 3.2 feet and found no additional evidence of corner. Ties to three (3) found witnesses and adjacent government corner were found to be consistent with previously recorded information. Replaced found iron and cap #11370 (Richard Steadman) in monument box with 3/4" x 24" rebar with 2-1/2" aluminum cap marked PA 345 INGHAM COUNTY and stamped PS 47969. Measured in 2005 as: M5 - M4 = 2634.62', M5 - A5 (WHITE OAK TWP) = 99.02', M5 - M6 = 2633.73'

C. Description of monument for corner and accessories established to perpetuate locating the position of the corner:

Replaced found iron and cap #11370 (Richard Steadman) in monument box with 3/4" x 24" rebar with 2-1/2" aluminum cap marked PA 345 INGHAM COUNTY and stamped PS 47969 1.7' East of centerline of Meech Road.
North 99.02' Found 3/4" Iron & Cap #11370 (Richard Steadman) in Monument Box - A5, White Oak Township
N45°E 39.10' Found Nail & Tag in Mini- Power Pole
S75°E 46.95' Found Nail & Tag #11370 (Richard Steadman) Southwest Side 13" Sassafras Tree
S70°W 74.56' Found Nail & Tag #28414 (Maurice Mahieu) North Side 20" Walnut

Signed by Wendy S. Parsons

Date 6/3/05

Surveyor's Michigan License No. 47969

FORM APPROVED BY MICHIGAN STATE BOARD OF PROFESSIONAL SURVEYORS, JAN. 28, 1971
REVISED MAY 14, 1975
REVISED JAN., 1983
REVISED OCT., 1995

P.A. 345 INGHAM COUNTY
PEER APPROVED 3/22/2005 M

1	A	B	C	D	E	F	G	H	I	J	K	L	M
2		6		5		4		3		2		1	
3													
4		7		8		9		10		11		12	
5													
6		18		17		16		15		14		13	
7													
8		19		20		21		22		23		24	
9													
10		30		29		28		27		26		25	
11													
12		31		32		33		34		35		36	
13													



INGHAM COUNTY, INGHAM TOWNSHIP
M5

4. FEBRUARY 5, 1978 - PA 74 - (Liber 4, Page 134) John A. Sellek R.L.S. # 2585

A. M-5- SE corner Sec 12, found $\frac{3}{4}$ " iron and cap with RLS# 11370 stamped in it in monument box in center of intersection of Meech and losco Roads. Nail in 16" Elm S70°W 74.57'. Nail in 24" Maple N70°W 67.50'. Nail in telephone pole #505 N45°E 39.09'.

5. MAY 4, 1978 - C.E.T.A. FIELD NOTES - TECH SUPERVISOR L. Bryan of Polaris
For White Oak A5

Shows distance of 95.12' to traverse point

6. MAY 8, 1978 - C.E.T.A. FIELD NOTES - TECH SUPERVISOR L. Bryan of Polaris

Found $\frac{3}{4}$ " Pipe with Cap #11370(Richard Steadman) in Monument Box according to Liber 4, Page 134, 3' East of Physical centerline of Meech Road on physical centerline of losco west.

7. JANUARY 9, 1979 (field date : June 25, 1973) - PA 74 - (Liber 5, Page 146) Richard W. Steadman R.L.S. # 11370

A. Original Monument: wood post set by Joseph Wampler, U.S. Deputy Surveyor in 1824; bearing trees: 9" Ash N37°W 43 lks. And 9" Ash S29°W - no distance given. The only other public record I find pertaining to this corner is a survey dated February 4, 1839 and recorded in Volume 1 on Page 137, Ingham County Surveyors Records, wherein Anson Jackson, County Surveyor gives the bearing trees as: 9" Ash N37°W 43 lks. And 9" Ash S45°W 29 lks.

B. Dug hole in the intersection of Meech and losco Roads but found nothing. Re-established corner by proportional measurements from possession evidence North, South, and West.

C. Set $\frac{3}{4}$ " iron pipe in monument box to mark corner.

Witnesses:	30" Maple	N.N.W.	66.94 ft.
	14" Walnut	S.S.W.	74.63 ft.
	Telephone pole	S.W.	59.72 ft.
	Telephone pole	N.E.	39.15 ft

Corner for T2N, R2E (set $\frac{3}{4}$ " iron pipe and monument box) North 99 ft. (150lks.)

8. SEPTEMBER 1982 - PA 132 - (Liber 4, Page 644) Austin C. Williams R.L.S. # 21275

Nail in 16" Elm S70°W 47.57'

Nail in 24" Maple N70°W 67.50'

Nail in Tel. pole #505 N45°E 39.09'

9. NOVEMBER 6, 1992 - PA 132 - (Liber 6, Page 1124) Maurice H. Mahieu R.L.S.
28414

Found $\frac{3}{4}$ " iron pipe w/ cap #11370, in monument box.

Witnessed by:

N & T #11370 S. Side wood post, N60°E, 39.05'

N & T #28414 N. Side 8" Sassafras, S75°E, 46.33'

N & T #28414 E. Side wood post, S20°W, 61.56'

N & T #28414 N. Side 28" Walnut, S75°W, 74.69'



2005-031506

Page: 2 of 2

06/16/2005 08:33f