

LAND CORNER RECORDATION CERTIFICATE
FILING REQUIREMENT OF ACT 74, MICH. P.A. 1970

FOR CORNERS OF—	LOCATED IN—	CORNER CODE NUMBER
1. PUBLIC LAND SURVEY 30 T. 2 N. R. 2 E.		A-9
2. PROPERTY CONTROLLING IN SECTION T. N. S. R. E.		
3. MISCELLANEOUS PROPERTY IN SECTION T. N. S. R. E.		
4. LOT NO. , RECORDED PLAT		
5. PRIVATE CLAIMS		

LIBER 4 PG 11

FILED

MAR 18 4 09 PM '77

REGISTER OF DEEDS

Paula Johnson
INGHAM COUNTY, MICH.

REGISTER OF DEEDS STAMP AND
FILING NUMBER

I, Ronnie M. Lester, do hereby certify that under requirements of P.A. 74, Michigan P.A. of 1970, the corner points mentioned in lines 1 and 2 above were, in a field survey on November 24, 1976, established, re-established, monumented, re-monumented, recovered or restored as expressed below and in conformance with regulations and rules therefore as required in the current manual of survey instructions of the United States Department of the Interior, Bureau of Land Management or by a decree of a court of law. Furthermore, that the corner points mentioned in lines 3, 4 and 5 above were, in a field survey on _____, 19____, found, recovered, restored, established or re-established as expressed below and in conformance with the rules of the Michigan State Board of Registration for Land Surveyors or, by a Decree of a Court of law:

A-9 A. Description of original monument and accessories and/or subsequent restoration:
Original monument and accessories lost.

A-9 B. Description of corner evidence found and/or method applied in restoring or re-establishing corner:
Set 1/2" Bar & Cap on Township line GLO falling South (21.78') of NE Corner of the NE Corner of Section 25.

A-9 C. Description of monument for corner and accessories established to perpetuate locating the position of the corner:
NW Corner Section 30, T2N, R2E, 1/2" Bar & Cap.
Nail & tag in NE side 6" cherry, SSE, 10.67'
Nail & tag in West side 24" Walnut, NNW, 31.69'
1/2" Bar & Cap at NE Corner Section 25, T2N, R1E, North, 21.78'

SIGNED BY Ronnie M. Lester DATE Dec 21, 1976

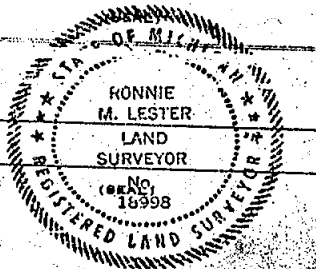
SURVEYOR'S MICHIGAN REGISTRATION NO. 18998

FOR STATE AND UNITED STATES AGENCIES:

SIGNED BY _____ DATE _____
CHIEF OF SURVEY PARTY

APPROVED AND SIGNED BY _____ DATE _____
MICHIGAN REGISTERED LAND SURVEYOR

SURVEYOR'S MICHIGAN REGISTRATION NO. _____



1021

FORM APPROVED BY MICHIGAN STATE BOARD OF REGISTRATION, JAN. 20, 1971
REVISED MAY 14, 1975

MAY PLACE SKETCH ON BACK OR ATTACHED SHEET

LAND CORNER RECORDATION CERTIFICATE FILING REQUIREMENT OF ACT 74, MICH. P.A. 1970

316 349
FILED

FOR CORNERS OF --	LOCATED IN --	CORNER CODE NUMBER
1. PUBLIC LAND SURVEY	1 2N 2 E	A-10
2. PROPERTY CONTROL ING IN SECTION	1 2N 2 E	
3. MISCELLANEOUS PROPERTY IN SECTION	1 2N 2 E	
4. FOUND NO	RECORDED PLAT	
5. PRIVATE CLAIMS		

MAR 17 11 21 AM '75
REGISTER OF DEEDS
Curt M. Lewis
INGHAM COUNTY, MICH

REGISTER OF DEEDS STAMP AND
FILING NUMBER

I, Richard W. Steadman, do hereby certify that under requirements of P.A. 74, Michigan P.A. of 1970, the corner points mentioned in lines 1 and 2 above (identified with circles on under code diagram - over) were, in a field survey on June 16 1973 established, re-established, monumented, re-monumented, recovered or restored as expressed below and in conformance with regulations and rules therefore as required in the current manual of survey instructions of the United States Department of the Interior, Bureau of Land Management or by a decree of a court of law. Furthermore, that the corner points mentioned in lines 3, 4 and 5 above were, in a field survey on 19 found recovered, restored, established or re-established as expressed below and in conformance with the rules of the Michigan State Board of Registration for Land Surveyors or, by a Decree of a Court of law:

A. Description of original monument and accessories and/or subsequent restoration:
The establishment of closing quarter corners was not included in the procedure of the United States Survey of the Public Lands. This task was usually performed by the County Surveyor at a later date. From the Ingham County Records, Vol. 2, Page 337, it appears that County Surveyor T. J. Brown established this corner in a survey dated April 23, 1850, giving the following witnesses: 30" W. Oak N28 1/2W 70 1/3 lks., and 5" Cherry N60E 44 lks., but no monument description.

B. Description of corner evidence found and/or method applied in restoring or re-establishing corner:
Dug hole in Meech Road on line with fence East, and 2 ft. West of east shoulder of road, found large pointed stone with smaller stones around it.

OSBORNE RD

C. Description of monument for corner and accessories established to perpetuate locating the position of the corner:
Left stone in place as found for the corner.

Witnesses:	12" W. Cherry	N.H.E.	28.53 ft.
	10" Oak	W.S.W.	31.00 ft.
	6" Hickory	W.N.W.	30.54 ft.

SIGNED BY Richard W. Steadman DATE February 20, 1975

SURVEYOR'S MICHIGAN REGISTRATION NO. 11370

FOR STATE AND UNITED STATES AGENCIES:

SIGNED BY Chief of Survey Party DATE

APPROVED AND SIGNED BY Michigan Professional Land Surveyor DATE

SURVEYOR'S MICHIGAN REGISTRATION NO.

818

Form No. 30, 1973
UNIVERSITY MICROFILMS
SERIALS ACQUISITION
300 N. ZEEB RD.
ANN ARBOR, MI 48106

FORM APPROVED BY MICHIGAN STATE BOARD OF REGISTRATION, JAN. 20, 1971
DISTRIBUTED BY MICHIGAN SOCIETY OF REGISTERED LAND SURVEYORS

LAND CORNER RECORDATION CERTIFICATE
FILING REQUIREMENT OF ACT 74, MICH. P.A. 1970

FOR CORNERS OF--	LOCATED IN--	CORNER CODE NUMBER
1. PUBLIC LAND SURVEY	T 2N N. S. R. 2E E. W.	A-11
2. PROPERTY CONTROLLING IN SECTION	T. N. S. R. E. W.	
3. MISCELLANEOUS PROPERTY IN SECTION	T. N. S. R. E. W.	
4. LOT NO.	RECORDED PLAT	
5. PRIVATE CLAIMS		

LIBER 3 PG 355

FILED

MAR 17 11 21 AM '75

REGISTER OF DEEDS

Emil M. Lewis
INGHAM COUNTY, MICH.

REGISTER OF DEEDS STAMP AND
FILING NUMBER

I, Richard W. Steadman do hereby certify that under requirements of P.A. 74, Michigan P.A. of 1970, the corner points mentioned in lines 1 and 2 above (identified with circles on index code diagram—over) were, in a field survey on June 16 1973, established, re-established, monumented, re-monumented, recovered or restored as expressed below and in conformance with regulations and rules therefore as required in the current manual of survey instructions of the United States Department of the Interior, Bureau of Land Management or by a decree of a court of law. Furthermore, that the corner points mentioned in lines 3, 4 and 5 above were, in a field survey on 1973, found, recovered, restored, established or re-established as expressed below and in conformance with the rules of the Michigan State Board of Registration for Land Surveyors or, by a Decree of a Court of law:

A. Description of original monument and accessories and/or subsequent restoration:

Original monument: wood post set by Joseph Wampler, U.S. Deputy Surveyor in 1825. Bearing trees: 23" R. Oak S17E 116 lks., no other. I find no public record of a restoration of this corner.

B. Description of corner evidence found and/or method applied in restoring or re-establishing corner:

Dug large, deep hole in Meech Road, but found nothing. Re-established corner opposite fence East and on Northerly extension of fence which begins at south edge of Swan Road intersection and runs South to West 1/4 corner of Section 31 (wood anchor post).

C. Description of monument for corner and accessories established to perpetuate locating the position of the corner:
Set 3/4" iron pipe for corner at above described location.

Witnesses: 3/4" iron pipe	East	33.02 ft.
14" Walnut	W.S.W.	24.74 ft.
12" Oak	N.N.W.	35.21 ft.
Largest trunk of triple W. Cherry	S.S.E.	77.69 ft.

SIGNED BY *Richard W. Steadman* DATE February 20, 1975

SURVEYOR'S MICHIGAN REGISTRATION NO. 11370

FOR STATE AND UNITED STATES AGENCIES:

SIGNED BY _____ DATE _____
CHIEF OF SURVEY PARTY

APPROVED AND SIGNED BY _____ DATE _____
MICHIGAN REGISTERED LAND SURVEYOR

SURVEYOR'S MICHIGAN REGISTRATION NO. _____

821

Form No. MLM735
DOUBLE DAY BROS. & CO., KALAMAZOO, MICH.

FORM APPROVED BY MICHIGAN STATE BOARD OF REGISTRATION, JAN. 28, 1971
DISTRIBUTED BY MICHIGAN SOCIETY OF REGISTERED LAND SURVEYORS

FILING REQUIREMENT OF ACT 74, MICH. P.A. 1970

LIBER 3 PG 357

LOCATED IN -

B-11

FILED

$$2\mu \quad \quad \quad \mu \quad 2\epsilon$$

22

1. *Chlorophyll a*

1.

U. I. D. NO. RECORDED PAGE

S. PRIVATE CLAIMS

Mar 17 11 21 AM '75

REGISTER OF DEEDS

Enid M. Lewis
INGHAM COUNTY, MICH

REGISTER OF DEEDS STAMP AND
FILING NUMBER

1. Richard W. Steadman

do hereby certify that under requirements of P.A. 74, Michigan P.A. of 1970 the corner points mentioned in lines 1 and 2 above (identified with circles on index code diagram - over) were, in a field survey on **June 18, 1973**, established, re-established, monumented, re-monumented, recovered or restored as expressed below and in conformance with regulations and rules thereto as required in the current manual of survey instructions of the United States Department of the Interior, Bureau of Land Management or by a decree of a court of law. Furthermore, that the corner points mentioned in lines 3, 4 and 5 above were, in a field survey on **June 18, 1973**, found, recovered, restored, established or re-established as expressed below and in conformance with the rules of the Michigan State Board of Registration for Land Surveyors or, by a Decree of a Court of law.

A Description of original monument and accessories and of subsequent restoration
Original monument: wood post set by Joseph Wampler U.S. Deputy Surveyor
in 1825. Bearing trees: 20" W. Oak N84W 41 lks., and 26" Elm S42 1/2W
66 lks.

Restoration: From the Ingham County Surveyors Records, Vol. 5, Page 40, in a survey dated May 31, 1900, Deputy County Surveyor E. A. Calkins calls for this corner to be a "post of oak, iron to be set, from which bears a 10° Elm N3°E 46 lks. and a 15° W. Swp. Oak S46W 48 lks."

B. Description of corner evidence found and of method applied in restoring or re-establishing corner.
Found wood anchor post at four way fence intersection.

C. Description of monument for corner and accessories established to perpetuate locating the position of the corner:
I assumed that the wood anchor post marks the corner.

Witnesses:	14" Oak	North	4.9 ft.
	8" Oak	N.N.W.	26.6 ft.
	Twin 4" Ironwood	W.N.W.	23.5 ft.

SIGNED BY D. L. W. Stehman
 SURVEYOR'S MICHIGAN REGISTRATION NO. 11370

DATE: February 20, 1975

FOR STATE AND UNITED STATES AGENCIES:

SIGNED BY

"CHIEF OF SURVEY PARTY."

DATE

APPROVED AND SIGNED BY

WICHITA FREE PRESS, AND BUREAU

DATE _____

SURVEYOR'S MICHIGAN REGISTRATION NO.

Form No. 101-10730
Revised: 1962. U. S. GOVERNMENT PRINTING OFFICE

FORM APPROVED BY MICHIGAN STATE BOARD OF REGISTRATION, JAN. 28, 1971
DISTRIBUTED BY MICHIGAN SOCIETY OF REGISTERED LAND SURVEYORS

LAND CORNER RECORDATION CERTIFICATE

FILING REQUIREMENT OF ACT 74, MICH. P.A. 1970

LIBER 3 PG 562

FOR CORNERS OF—	Sec.	LOCATED IN—	CORNER CODE NUMBER
1. PUBLIC LAND SURVEY	31	T. 2N N. 2E E. S. R. W.	C11 A12
2. PROPERTY CONTROLLING IN SECTION	T.	N. S. R. W.	
3. MISCELLANEOUS PROPERTY IN SECTION	T.	N. S. R. W.	
4. LOT NO. _____, RECORDED PLAT _____			
5. PRIVATE CLAIMS _____			

FILED

APR 28 1 59 PM '76

REGISTER OF DEEDS

David M. Lewis
INGHAM COUNTY, MICH.

REGISTER OF DEEDS STAMP AND FILING NUMBER

I, Marvin F. Fouty, do hereby certify that under requirements of P.A. 74, Michigan P.A. of 1970, the corner points mentioned in lines 1 and 2 above were, in a field survey on 11-8, 1975, established, re-established, monumented, re-monumented, recovered or restored as expressed below and in conformance with regulations and rules therefore as required in the current manual of survey instructions of the United States Department of the Interior, Bureau of Land Management or by a decree of a court of law. Furthermore, that the corner points mentioned in lines 3, 4 and 5 above were, in a field survey on _____, 19____, found, recovered, restored, established or re-established as expressed below and in conformance with the rules of the Michigan State Board of Registration for Land Surveyors or, by a Decree of a Court of law:

A. Description of original monument and accessories and/or subsequent restoration:

C11 Original monument and accessories obliterated. No record of subsequent restoration by the County Surveyor.

A12 ~~Original monument and accessories obliterated. No record of subsequent restoration by the County Surveyor.~~
E. A. Galkins who set an oak post with stone and accessories. Corner position occupied by newer anchor post with fences North, South and East.

B. Description of corner evidence found and/or method applied in restoring or re-establishing corner:

C11 Set 1/2" bar and cap from adjacent occupation lines.

A12 Set 1/2" bar and cap at base of Anchor Post.

C. Description of monument for corner and accessories established to perpetuate locating the position of the corner:

C11 W 1/4 Corner Section 31, T2N, R2E 1/2" bar and cap
Nail and Tag East side 14" Maple North 21.30'
Nail and Tag West side 6" Beech NE 12.70'
Nail and Tag North side 6" cherry CNE 15.03'
A12 NE Cor. Section 31, T2N, R2E 1/2" bar and cap
Nail and Tag SE side 22" Maple West 25.82'
Nail and Tag North side 32" Oak East 20.38'
Nail and Tag W side 26" Maple NE 35.75'

SIGNED BY *Marvin Fouty* 18989

DATE

April

SURVEYOR'S MICHIGAN REGISTRATION NO.

FOR STATE AND UNITED STATES AGENCIES:

SIGNED BY

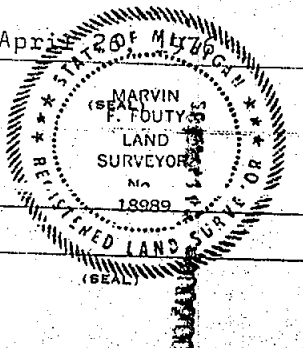
DATE

APPROVED AND SIGNED BY

MICHIGAN REGISTERED LAND SURVEYOR

DATE

SURVEYOR'S MICHIGAN REGISTRATION NO.



951

FORM APPROVED BY MICHIGAN STATE BOARD OF REGISTRATION JAN. 28, 1971
REVISED MAY 14, 1978

MAY PLACE SKETCH ON BACK OR ATTACHED SHEET

LAND CORNER RECORDATION CERTIFICATE

FILING REQUIREMENT OF ACT 74, MICH. P.A. 1970

This Recordation Certificate is to correct the original Recordation Certificate in Liber 3, Page 562. (Witnesses in C below reversed in designation A-12 & C-11

FOR CORNERS OF--	Sec.	LOCATED IN--	CORNER CODE NUMBER
1. PUBLIC LAND SURVEY	31	T. 2N S. R. 2E E. W.	C11 A12
2. PROPERTY CONTROLLING IN SECTION		T. S. R. E. W.	
3. MISCELLANEOUS PROPERTY IN SECTION		T. S. R. E. W.	
4. LOT NO. _____, RECORDED PLAT _____			
5. PRIVATE CLAIMS _____			

LIBER 5 PG 204
FILED

MAR 13 11 11 AM '79

REGISTER OF DEEDS

Paula Johnson

INGHAM COUNTY, MICH.

REGISTER OF DEEDS STAMP AND FILING NUMBER

I, Marvin F. Fouty, do hereby certify that under requirements of P.A. 74, Michigan P.A. of 1970, the corner points mentioned in lines 1 and 2 above were, in a field survey on 11-8, 1975, established, re-established, monumented, re-monumented, recovered or restored as expressed below and in conformance with regulations and rules therefore as required in the current manual of survey instructions of the United States Department of the Interior, Bureau of Land Management or by a decree of a court of law. Furthermore, that the corner points mentioned in lines 3, 4 and 5 above were, in a field survey on _____, 19____, found, recovered, restored, established or re-established as expressed below and in conformance with the rules of the Michigan State Board of Registration for Land Surveyors or, by a Decree of a Court of law:

A. Description of original monument and accessories and/or subsequent restoration:

- C11 Original monument and accessories obliterated. No. record of subsequent restoration by the County Surveyor.
- A12 The South 1/2 of the Section was surveyed in June 1900 by County Surveyor E.A. Calkins who set an oak post with stone and accessories. Corner position occupied by newer anchor post with fences North, South and East.

B. Description of corner evidence found and/or method applied in restoring or re-establishing corner:

- C11 Set 1/2" bar and cap from adjacent occupation lines.
- A12 Set 1/2" bar and cap at base of Anchor Post.

C. Description of monument for corner and accessories established to perpetuate locating the position of the corner:

- A12 W 1/4 corner Section 31, T2N, R2E, 1/2" bar and cap
Nail and Tag East side 14" Maple North 21.30'
Nail and Tag West side 6" Beech NE 12.70'
Nail and Tag North side 6" cherry ENE 15.03'
- C11 NE Cor. Section 31, T2N, R2E 1/2" bar and cap
Nail and Tag SE side 22" Maple West 25.82'
Nail and Tag North side 32" Oak East 20.38'
Nail and Tag W side 26" Maple NE 35.75'

SIGNED BY *Marvin Fouty* DATE 2-27-78

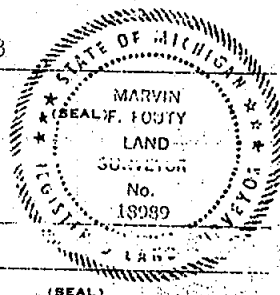
SURVEYOR'S MICHIGAN REGISTRATION NO. 18989

FOR STATE AND UNITED STATES AGENCIES

SIGNED BY _____ DATE _____

APPROVED AND SIGNED BY _____ DATE _____

MICHIGAN REGISTERED LAND SURVEYOR



SURVEYOR'S MICHIGAN REGISTRATION NO. _____

1587

FORM APPROVED BY MICHIGAN STATE BOARD OF REGISTRATION, JAN. 26, 1971
REVISED MAY 14, 1975

MAY PLACE SKETCH ON BACK OR ATTACHED SHEET

LAND CORNER RECORDATION CERTIFICATE
Filing Requirement of Act 74, Mich. P.A. 1970

LIBER 8 PAGE 301

For corners in

INGHAM
(County)

Located In:

INGHAM
Corner Code #

FILED

NOV 15 11 32 AM '94

REGISTER OF DEEDS

Paul D. Jackson
INGHAM COUNTY, MICH.

Register of Deeds Stamp & File Number

1. Public Land Survey

T 2N R 1E L-10

2. Property Controlling
in Section

S T R

3. Miscellaneous
Property in Sec.

S T R

S T R

4. Lot No. , Recorded Plat

5. Private Claims

I, RON HELSEL, in a field survey on OCT. 25, 19 94, do hereby certify that under requirements of P.A. 74, Michigan P.A. of 1970, the corner points mentioned in lines 1 and 2 above were in conformance with regulations and rules therefore as required in the current manual of survey instructions of the United States Department of the Interior, Bureau of Land Management or by a decree of a Court of Law and/or that the corner points mentioned in lines 3, 4 and 5 above were in conformance with the rules of the Michigan Board of Land Surveyors or by a Decree of a Court of Law; established, re-established, monumented, re-monumented, recovered, found as expressed below:

NOTE: Not more than 4 corners, all in the same town and range, may be recorded on this certificate.

A. Description of original monument and accessories and/or subsequent restoration:

CORNER NOT SET AS PART OF ORIGINAL GOVERNMENT SURVEY. COUNTY SURVEYOR, A. JACKSON, REFERRED TO THIS CORNER IN SURVEYS RECORDED IN LIBER 1, PG. 135 IN 1838 AND IN LIBER 2, PG. 137 IN 1853, BUT DID NOT IDENTIFY IT. WITNESSED AS:
W. OAK, 20", N32-3/4W, 91, LINKS
W. OAK, 14", N11-1/2W, 98 LINKS

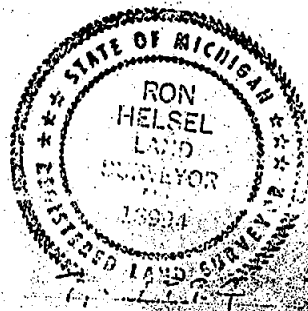
B. Description of corner evidence found and/or method applied in restoring or reestablishing corner:

FOUND A FALLEN OAK TREE OVER AN ANCHOR POST KNOCKED TO THE GROUND IN A LARGE CIRCLE OF STONES. FENCES RAN TO THE NORTH & EAST. A TREE ROW EXTENDED SOUTH FROM THE CIRCLE OF STONES. ACCEPTED THE CENTER OF THE ROCKS AND SET 1/2" BAR & CAP #18994 IN THE EXISTING HOLE. BAR WAS 2.6' SOUTH & 2.3' WEST OF THE ACTUAL INTERSECTION OF THE NORTH-SOUTH AND EAST-WEST 1/4 LINES.
MEASURED 2618.44' TO THE NORTH 1/4 CORNER (A. JACKSON 2604.36')
MEASURED 2633.36' TO EAST 1/4 CORNER (A. JACKSON 2621.52')
MEASURED 2626.03' TO WEST 1/4 CORNER (A. JACKSON 2612.28')

C. Description of monument for corner and accessories established to perpetuate locating the position of the corner:

1/2" IRON BAR & CAP #18994 ON FENCE NORTH & EAST AND TREE LINE SOUTH IN CIRCLE OF FIELD STONES.

SET NAIL & TAG #18994 E/SIDE 12" ASH, N20°W, 9.40'
SET NAIL & TAG #18994 NW/SIDE 12" ASH, N20°E, 9.67'
SET NAIL & TAG #18994 N/SIDE TWIN 8" BOXELDER, EAST, 9.88'
SET NAIL & TAG #18994 SW/SIDE 10" ELM, S70°E, 7.43'



Surveyor's Michigan License No. 18994

2699

FORM APPROVED BY MICHIGAN STATE BOARD OF LAND SURVEYORS, JAN 28, 1982
REVISED MAY 14, 1975
REVISED JAN 1983

LAND CORNER RECORDATION CERTIFICATE
Filing Requirement of Act 74, Mich. P.A. 1970

Liber

9 Page 205

For corners in

INGHAM

Located In:

Corner Code #

(County)

WHITE OAK TOWNSHIP

1. Public Land Survey

T2N R2E A-11

T R

T R

T R

T R

2. Property Controlling
in Section

S T R

S T R

3. Miscellaneous

S T R

Property in Sec.

S T R

FILED

970029257
08/06/1997 09:00:08
REGISTER OF DEEDS
Paula Johnson
INGHAM COUNTY, MI

Register of Deeds Stamp & File Number

4. Lot No. , Recorded Plat

5. Private Claims

I, DAVID R. LOHR, in a field survey on 3/25, 1997 do hereby state that under requirements of P.A. 74, Michigan P.A. of 1970, the corner points mentioned in lines 1 and 2 above were in conformance with regulations and rules therefore as required in the current manual of survey instructions of the United States Department of the Interior, Bureau of Land Management or by a decree of a Court of Law and/or that the corner points mentioned in lines 3, 4 and 5 above were in conformance with the rules of the Michigan Board of Land Surveyors or by a Decree of a Court of Law; established, re-established, monumented, recovered, found as expressed below:

NOTE: Not more than 2 corners, all in the same town and range, may be recorded on this certificate.

	A	B	C	D	E	F	G	H	I	J	K	L	M
1													
2		6		5		4		3		2		1	
3													
4		7		8		9		10		11		12	
5													
6		18		17		16		15		14		13	
7													
8		19		20		21		22		23		24	
9													
10		30		29		28		27		26		25	
11													
12		31		32		33		34		35		36	
13													

A. Description of original monument and accessories and/or subsequent restoration:

A-1.1: 1. CORNER SET BY JOSEPH WAMPLER, DEP. SURVEYOR, IN NOV. 1823.
"INT W. BD. 7 LKS (4.62') S. OF P, SET P. AT ??? COR. OF 30 & 31, FW"
RO (RED OAK) 23 S 17 E 116 LKS (76.56')
"NO OTHERS"
NOTES SHOW DISTANCE EAST TO B-11 OF 34.31 CH. (2264.46')

CONTINUED ON BACK

B. Description of corner evidence found and/or method applied in restoring or reestablishing corner:

A-1.1: SEARCHED AT APPARENT LOCATION OF CORNER AND FOUND 3/4" PIPE AS PER ITEM #A-5. ALSO FOUND 1/2" IRON W/CAP #18998 AT M-11 INGHAM TWP. AS PER ITEM #A-7. ACCEPTED 3/4" PIPE AS CORNER BASED ON TESTIMONY OF SURVEYOR STEADMAN IN ITEM #A-5. COULD NOT REMOVE PIPE, LEFT IN PLACE AND SET PA #345 CAP #30090 ON TOP OF PIPE.

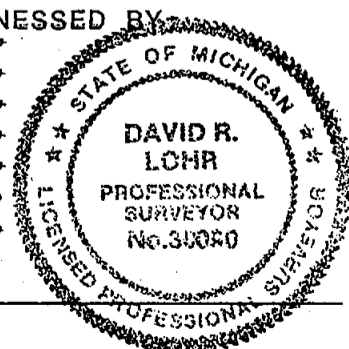
C. Description of monument for corner and accessories established to perpetuate locating the position of the corner:

A-1.1: 3/4" PIPE WITH PA#345 CAP #30090 AS PER LIBER 3, PAGE 355. CORNER FALLS 4.70 FT. SOUTH OF M-11 INGHAM TOWNSHIP.
C/L 6" ST. GATE POST (NORTHERLY), AZ. 69-02-00, 81.84'
C/L 6" ST. GATE POST (SOUTHERLY), AZ. 80-06-00, 77.33'
SET N&T #30090, N/S 12" ELM, AZ. 103-36-30, 41.00'
SET N&T #30090, W/S 15" CHERRY, AZ. 164-43-00, 77.84'
FD. N&T #18998, NE/S 20" WALNUT, AZ. 259-55-00, 24.50'
FD. N&T #18998, N/S 20" OAK, AZ. 295-07-30, 35.27'
M-11, ING. TWP. 3/4" REMON. BAR, AZ. 360-00-00, 4.62'

Signed by David R. Lohr

Date 6-16-97

Surveyor's Michigan License No. 30090



A-11: WHITE OAK TOWNSHIP, PART A - CONTINUED

2. CORNER REFERENCED IN SURVEY BY E. A. CALKINS, DEPUTY COUNTY SURVEYOR, DATED MAY 31 THRU JUNE 4, 1900, RECORDED IN BOOK 1, PAGE 40. NO REFERENCE TO MONUMENT OR WITNESSES.
3. NO REFERENCE MADE ON INGHAM COUNTY GRID MAP, DATED JAN. 1969.
4. LCRC BY RICHARD STEADMAN, PS #11370, DATED 6/16/73, RECORDED IN LIBER 3, PAGE 355, STATES: "ORIGINAL MONUMENT: WOOD POST SET BY JOSEPH WAMPLER, U.S. DEPUTY SURVEYOR IN 1825. BEARING TREES: 23" R. OAK S17E 116 LKS., NO OTHER. I FIND NO PUBLIC RECORD OF A RESTORATION OF THIS CORNER. DUG LARGE, DEEP HOLE IN MEECH ROAD, BUT FOUND NOTHING. RE-ESTABLISHED CORNER OPPOSITE FENCE EAST AND ON NORTHERLY EXTENSION OF FENCE WHICH BEGINS AT SOUTH EDGE OF SWAN ROAD INTERSECTION AND RUNS SOUTH TO WEST 1/4 CORNER OF SECTION 31 (WOOD ANCHOR POST). SET 3/4" IRON PIPE FOR CORNER AT ABOVE DESCRIBED LOCATION. WITNESSED BY:
 3/4" IRON PIPE, EAST, 33.02'
 14" WALNUT, WSW, 24.74'
 12" OAK, WNW, 15.21'
 LARGEST TRUNK OF TRIPLE W. CHERRY, SSE, 77.69'
5. TRAVERSE POINT WITNESS REPORT (CETA REMON PROGRAM, 1978) DATED 4/5/78, STATES: "FOUND 3/4" PIPE W/CAP RLS 11370 ACCORDING TO LIBER 3, PG. 355, ON PHYSICAL C/L OF MEECH RD, DUE WEST OF FENCE LINE EAST 8" BELOW ROAD SURFACE." WITNESSED BY:
 S 25 E, 77.77' FD. N&T 11370 ON W. SIDE 10" WILD CHERRY
 S 85 W, 24.77' FD. N&T 11370 ON S. SIDE 16" WALNUT
 N 82 W, 35.24' FD. N&T 11370 ON NE. SIDE 14" OAK
 DUE E., 33.02' FD. 3/4" PIPE W/RLS 11370 CAP
6. LCRC BY RONNIE LESTER, PS #18998, DATED 11/24/76, RECORDED IN LIBER 4, PAGE 13, RECORDING THE LOCATION OF M-11 INGHAM TOWNSHIP STATES: M-11: "SET 1/2" BAR & CAP ON TOWNSHIP LINE AT GLO FALLING NORTH OF SW CORNER OF SECTION 30, T2N, R2E, INGHAM COUNTY, MICHIGAN, AS RECORDED IN LIBER 3, PAGE 355." SURVEYOR LESTER GOES ON TO USE THIS CORNER (A-11) AS A WITNESS: "SW CORNER, SECTION 30, T2N, R2E, 1/2" PIPE & CAP, SOUTH, 4.62'."
7. SURVEY #80-B-520, BY LARRY BRYAN, PS #25832, DATED 11/20/80, RECORDED IN LIBER 7, PAGE 484, FOR A PARCEL LOCATED IN SECTION 36, T2N, R1E, INGHAM TOWNSHIP, USES THIS CORNER (A-11) AS A WITNESS TO M-11 INGHAM TOWNSHIP. "FD. 3/4" PIPE AT NORTHWEST CORNER OF SECTION 31, T2N, R2E, SOUTH, 4.55'."
8. SURVEY #89627, BY RON HELSEL, PS #18994, DATED 11/27/89, RECORDED IN LIBER 6, PAGE 526, STATES: "NW CORNER, SECTION 31, T2N, R2E, INGHAM COUNTY, MICHIGAN, L3, P.355. NO MENTION OF MONUMENT. SAME WITNESSES AS ITEM #5.
9. SURVEY #91-2183, BY RON HELSEL, PS #18994, DATED 07/01/91, RECORDED IN LIBER 7, PAGE 407, STATES: NORTHWEST CORNER, SECTION 31, T2N, R2E. NO MENTION OF MONUMENT OR WITNESSES.
10. SURVEY #A-4214, BY RONNIE LESTER, PS #18998, DATED 04/28/92, RECORDED IN LIBER 6, PAGE 958, STATES: "NORTHWEST CORNER, SECTION 31, T2N, R2E. 3/4" PIPE, LIBER 3, PAGE 355. WITNESSED BY:
 SET NAIL & TAG IN NORTH SIDE 20" WALNUT, 260 AZ., 24.5'
 SET NAIL & TAG ON WEST SIDE 15" CHERRY, 168 AZ., 77.9'
 CENTERLINE OF 6" STEEL GATE POST, 83 AZ., 76.9'
 CENTERLINE OF 6" STEEL GATE POST, 73 AZ., 81.9'
 SET NAIL & TAG IN N. E. SIDE 20" OAK, 295 AZ., 35.2'
 M-11, INGHAM TOWNSHIP, 1/2" BAR, 05 AZ., 4.7'
 SURVEY SHOWS A DISTANCE SOUTH TO A-12 OF 2637.79'
11. NO OTHER REFERENCES FOUND.