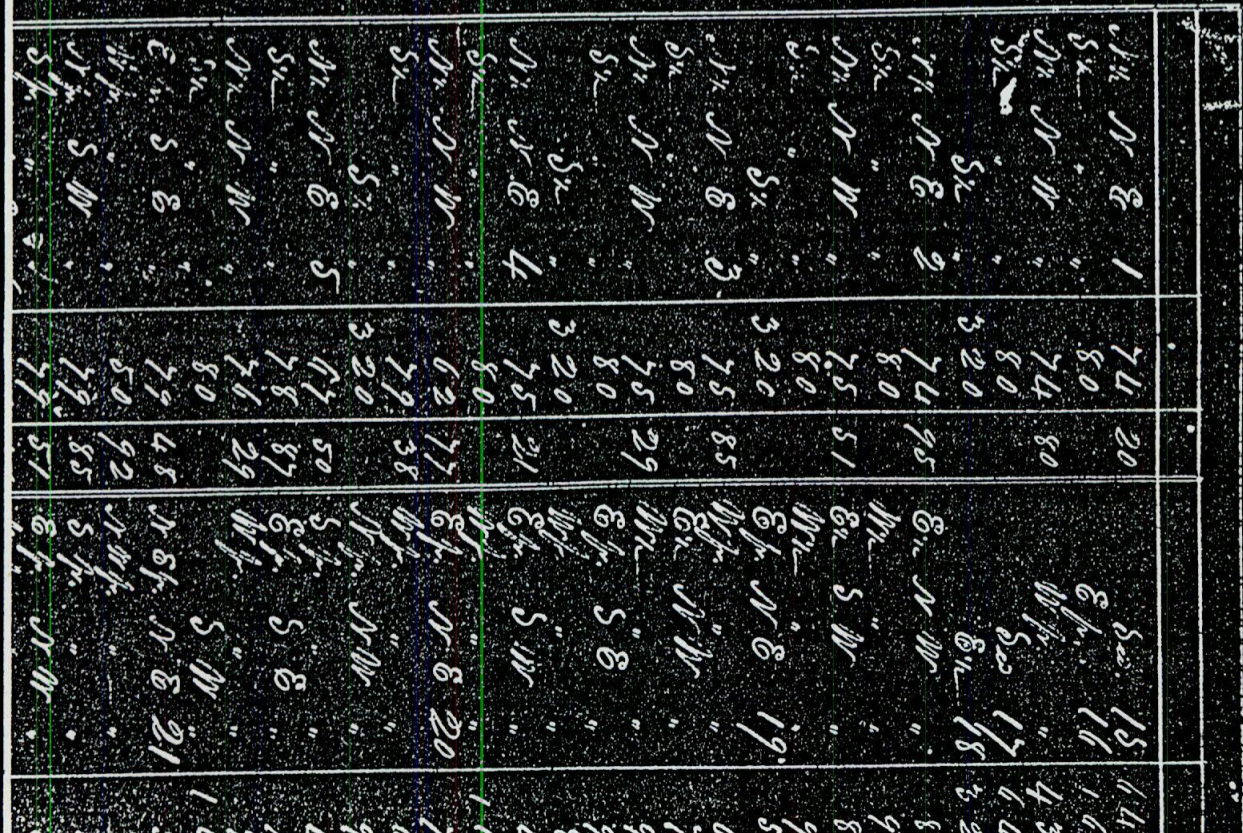



①



[illegible]

LANSING
 TOWNSHIP
 T4N-R2W
 G.L.O. PLAT MAP
 (GENERAL LAND OFFICE)
 • Corner Set
 by the original survey
 • Post Set
 by the original survey
 A 40.00 Acreage
 (from original G.L.O. plats)
 Closing Corner Offsets
 T Tree used as post


LANSING
 TOWNSHIP
 T4N-R2
 .O. PLAT N
 RAL LAND O
 Corner Set
 by the original survey
 Post Set
 by the original survey
 Acreage
 (from original G.L.O.
 Closing Corner Offs
 Tree used as post

LANSING
 TOWNSHIP
 T4N-R2
 .O. PLAT N
 RAL LAND O
 Corner Set
 by the original survey
 Post Set
 by the original survey
 Acreage
 (from original G.L.O.
 Closing Corner Offs
 Tree used as post

LANRING
TOWNSHIP
T4N-R2W
G.L.O. PLAT MAP
(GENERAL LAND OFFICE)

- Corner Set
by the original survey
- Post Set
by the original survey

A 4000
Acreage
(from original G.L.O. plats)

 Closing Corner Offsets
Tree used as post

LANSHING
TOWNSHIP
T4N-R2W
..O. PLAT MA
RAL LAND OFF
Corner Set
by the original survey
Post Set
by the original survey
Acreage
(from original G.L.O. plat
Closing Corner Offsets
Tree used as post

LANSING
 TOWNSHIP
 T4N-R2E
 ..O. PLAT N
 RAL LAND O

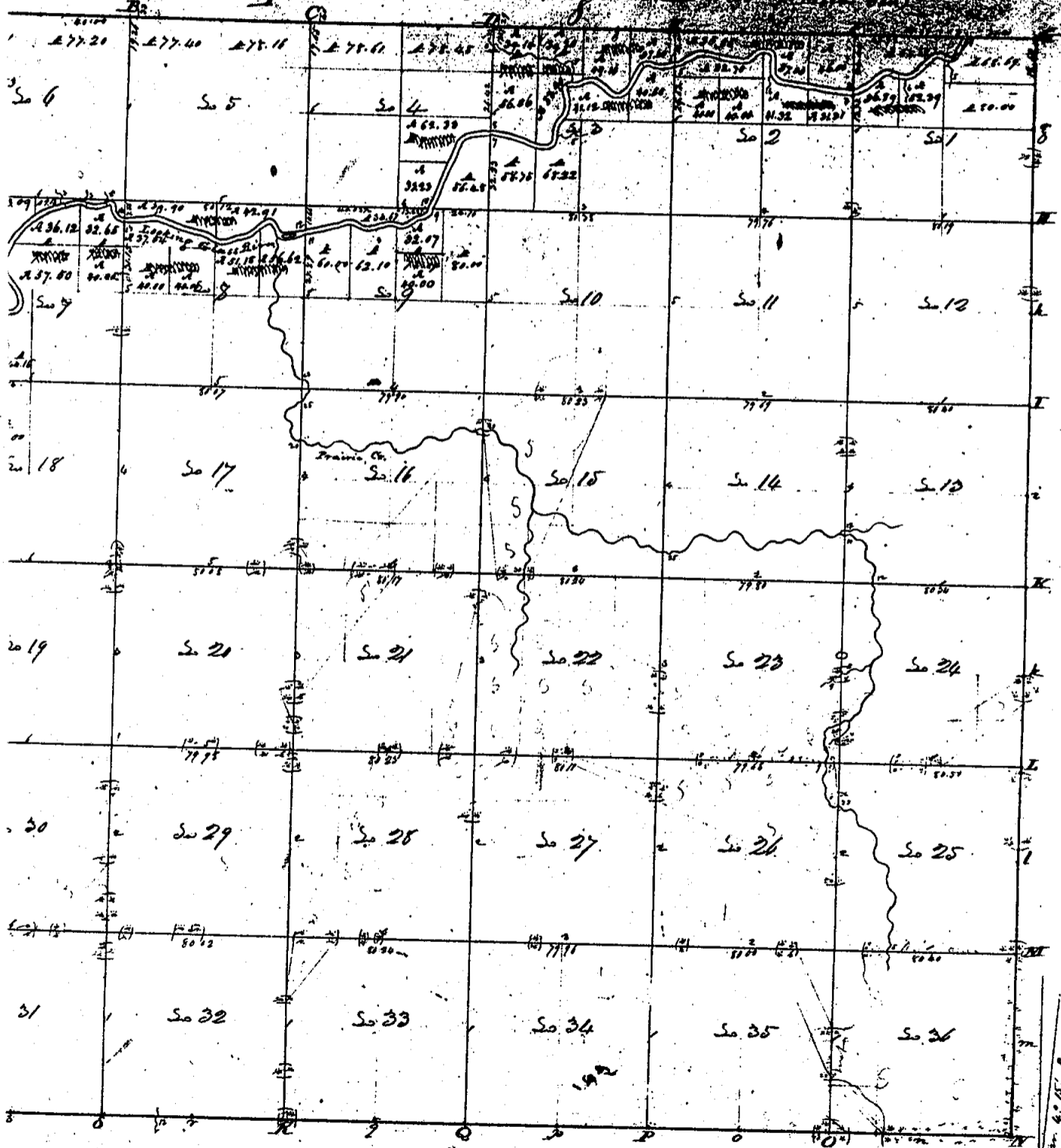
T Tree used as post

N

Prepared by the Ingham County Survey
and Remonumentation Project—1978
under the supervision of
Polaris Associates, Inc.
Registered Land Surveyors

DEWITT TWP, CLINTON COUNTY, MI:

Township N.V. 10th, Range N.E. 1st



Surveyed in Jan. 1827 by Henry Parker