

LAND CORNER RECORDATION CERTIFICATE  
Filing Requirement of Act 74, Mich. P.A. 1970

For corners in

INGHAM

(County)

Located In:

Corner Code #

LANSING TOWNSHIP.

1. Public Land Survey

T 4N R 2W

C-1

2. Property Controlling  
in Section

S T R

3. Miscellaneous  
Property in Sec.

S T R

4. Lot No. F

5. Private Claims



2001-060845

Page: 1 of 2

11/14/2001 08:20A

Paula Johnson  
INGHAM COUNTY  
REGISTER OF DEEDS

RECORDED

L-10 P-154

CRNR 11.00

2001-060845

Register of Deeds Stamp & File Number

	A	B	C	D	E	F	G	H	I	J	K	L	M
1													
2	6		5		4		3		2		1		
3													
4	7		8		9		10		11		12		
5													
6	18		17		16		15		14		13		
7													
8	19		20		21		22		23		24		
9													
10	30		29		28		27		26		25		
11													
12	31		32		33		34		35		36		
13													

I, DAVID R. LOHR, PS, in a field survey on 4/25 & 7/17, 2000, do hereby certify that under requirements of P.A. 74, Michigan P.A. of 1970, the corner points mentioned in lines 1 and 2 above were in conformance with regulations and rules therefore as required in the current manual of survey instructions of the United States Department of the Interior, Bureau of Land Management or by a decree of a Court of Law and/or that the corner points mentioned in lines 3, 4 and 5 above were in conformance with the rules of the Michigan Board of Land Surveyors or by a Decree of a Court of Law; established, re-established, monumented, re-monumented, recovered, found as expressed below:

**NOTE: Not more than 2 corners, all in the same town and range, may be recorded on this certificate.**

A. Description of original monument and accessories and/or subsequent restoration:

- CORNER SET BY MUSGROVE EVANS, U.S. DEPUTY SURVEYOR IN MARCH OF 1827. "INTER. N. BOUNDARY 32 LKS (21.12') EAST OF POST AND SET POST COR. TO SEC. 5 & 6 fw A" WITNESSED BY: BEECH 20", S 14° W, 16 LKS. (10.56') DO 9", S 59° E, 36 LKS. (23.76') GLO NOTES SHOW DISTANCES SOUTH OF 39.22 CH. (2588.52)
- CORNER REFERENCED ON PAGE 153, OF FIELD BOOK #2, BY C.E. HOLLISTER, CLINTON CO. SURVEYOR, DATED APRIL 19, 1899. IN SUMMARY "FROM CORNER TOWN, RAN EAST ... 84.31(CH.) (5564.46') FOUND STONE," (C-13, DEWITT TWP.) WITNESSED BY: "STONE SET FOR LANSING TWP., 32-1/2 LKS. (21.45') EAST." NO WITNESSES GIVEN FOR LANSING TWP. STONE.
- CORNER REFERENCED IN SURVEY OF LANSING TOWNSHIP IN 1909 BY R.J.ROBB, IN BOOK 5, PAGE 218, AS "CEMENT POST", 2.5 FT. LONG, 3" SQUARE AT TOP AND 4" SQUARE AT BOTTOM, WITNESSED BY: LYNN, N-W 3' AND MAPLE WEST, 21.5 FT. DEWITT COR. WEST 21.4' NO DISTANCES SHOWN ON SURVEY.

CONTINUED ON PAGE 2:

B. Description of corner evidence found and/or method applied in restoring or reestablishing corner:

SEARCHED AT APPARENT LOCATION OF CORNER AND FOUND 1/2" REBAR (NO CAP). AREA HAS BEEN REGRADED DUE TO CONSTRUCTION AND FENCING OF AIRPORT GROUNDS. NO EXCAVATION PERFORMED AT THIS LOCATION. MEASURED WEST 5561.00' TO A-1, WHICH IS IN CLOSE ACCORD TO GLO (CLINTON CO.) DISTANCE OF 5557.53' AND HOLLISTER'S 1899 DISTANCE OF 5564.46'. ACCEPTED LOCATION OF FOUND 1/2" REBAR AS CORNER, HOWEVER, DETERMINED BY TRAVERSE THAT IRON FALLS 0.41 FT. NORTH OF TOWNSHIP LINE. MEASURED FALLING TO C-13, DEWITT TOWNSHIP MATCHES THAT AS RECORDED IN LCRC OF LIBER 6, PAGE 34, AND IN CLOSE ACCORD TO GLO. SET STANDARD INGHAM COUNTY REMON. BAR WITH 2 1/2" ALUMINUM REMON. CAP, ON TOWNSHIP LINE, 0.41' SOUTH OF FOUND 1/2" IRON.

UPDATE: 5/21/01 - AT REQUEST OF PEER REVIEW, RETURNED TO SITE AND EXCAVATED IN AN ATTEMPT TO FIND OLD CONCRETE MONUMENT (ITEM #5) EXCAVATED TO DEPTH OF 2.0 FT. IN VERY COMPACT CLAY FILL, FOUND NO OTHER EVIDENCE. CORNER LOCATION FALLS ALONG NORTH EDGE OF AIRPORT SERVICE DRIVE, WHICH APPEARS TO BE IN A FILL SECTION, ANY OLD EVIDENCE WOULD BE UNDER THIS FILL. MEASURED WEST 2660.41' TO B-1, LANSING TWP., EAST 2625.29' TO D-1, LANSING TWP. AND SOUTH 2562.85' TO C-2, LANSING TWP.

UPDATE JUNE 2001: EXCAVATED AROUND FOUND CORNER BUT FOUND NO FURTHER EVIDENCE.

C. Description of monument for corner and accessories established to perpetuate locating the position of the corner:

C-1, T4N, R2W, LANSING TOWNSHIP, INGHAM COUNTY. SET STANDARD INGHAM COUNTY REMON. BAR WITH 2 1/2" ALUMINUM REMON. CAP. STAMPED #30090 ON TOWNSHIP LINE. WITNESSED BY:  
FD. 1/2" IRON (NO CAP), NORTH, 0.41'  
FD. PK NAIL ON CULVERT, N 00° W, 25.40'  
FD. PK NAIL ON CULVERT, N 56° W, 63.75'  
FD. N&T #16053 (STEPHENS), W/S 30" MAPLE, N 21° E, 105.12'  
SET N&T #30090, W/S 30" MAPLE, N 38° E, 150.05'  
FOUND C-13, DEWITT TOWNSHIP, PIPE WITH BRASS CAP, N 88° W, 21.50'  
BEARINGS GIVEN ARE MAGNETIC.



Signed by David R. Lohr

Date OCTOBER 24, 2000

Surveyor's Michigan License No. 30090

FORM APPROVED BY MICHIGAN STATE BOARD OF LAND SURVEYORS, JAN. 28, 1971  
REVISED MAY 14, 1975  
REVISED JAN., 1983  
REVISED OCT, 1995  
ADAPTED FOR WORD PROCESSING JAN, 1999

P.A. 345 INGHAM COUNTY  
PEER APPROVED 6/19/2001 M

C-1: T4N, R2W, LANSING TOWNSHIP, PART A: CONTINUED:

4. NORTH-SOUTH 1/4 LINE REFERENCED IN THE FOLLOWING PLATS RECORDED IN INGHAM COUNTY:

A. "LANTEX INDUSTRIAL PARK" DATED FEB. 11, 1965, BY CLYDE K. STEPHENS, RLS AND PE, AND RECORDED IN LIBER 66 OF PLATS, PAGE 46. NO DISTANCE SHOWN NORTH TO THIS CORNER.

NOTE: PLAT DO NOT MENTION MONUMENT OR GIVE WITNESSES.

5. CORNER REFERENCED IN LCRC, DATED 01/23/80, BY RONNIE M. LESTER, RLS#18998, AND RECORDED IN LIBER 6, PAGE 34. "FOUND 3" SQUARE CONCRETE MONUMENT SURROUNDED BY OLD RAILROAD SPIKES".

WITNESSED BY: NAIL & TAG, #18998, S/S TWIN 5" ASH, WNW, 38.60'  
NAIL & TAG, #18998, S/S MULTI. 4" ASH, NE, 6.88'  
NAIL & TAG, #18998, W/S TWIN 8" ASH, SE, 10.65'  
NAIL & TAG, #18998, E/S 8" ASH, WEST, 22.05'  
C-13 DEWITT TWP., CLINTON CO., 3" BRASS CAP ON 3" IRON PIPE, WEST, 21.50'

6. CORNER REFERENCED IN RECORDED SURVEY, DATED 08/20/87, BY MARK W. WITALEC, PS#30897, AND RECORDED IN LIBER 5, PAGE 285. FOUND "CONC. MON. SURROUNDED BY STONES." WITNESSED BY:

S.E. 10.65' TO NAIL & TAG #18998, S.W.SIDE 8" TREE  
N.E. 6.88' TO NAIL & TAG #18998, S.SIDE 4" TREE  
W. 21.50' TO IRON POST WITH BRASS CAP (C-13 DEWITT)  
S. 103.69' TO C/L OF R.R.GAUGE  
S. 137.15' TO PLAT MON. "LANTEX INDUSTRIAL PARK"

7. NO OTHER REFERENCES FOUND.



2001-060845

Page: 2 of 2

11/14/2001 08:20A

LAND CORNER RECORDATION CERTIFICATE

Filing Requirement of Act 74, Mich. P.A. 1970

For corners in

INGHAM

(County)

Located In:

Corner Code #

LANSING TOWNSHIP.

1. Public Land Survey

T 4N R 2W

C-2

T R

T R

T R

T R

2. Property Controlling  
in Section

S T R

S T R

3. Miscellaneous

S T R

Property in Sec.

S T R

4. Lot No. , Recorded Plat

5. Private Claims



2000-051291  
Page: 1 of 2  
11/30/2000 02:28P

Register of Deeds Stamp & File Number

I, DAVID R. LOHR, in a field survey on 4/25 & 5/23, 2000, do hereby certify that under requirements of P.A. 74, Michigan P.A. of 1970, the corner points mentioned in lines 1 and 2 above were in conformance with regulations and rules therefore as required in the current manual of survey instructions of the United States Department of the Interior, Bureau of Land Management or by a decree of a Court of Law and/or that the corner points mentioned in lines 3, 4 and 5 above were in conformance with the rules of the Michigan Board of Land Surveyors or by a Decree of a Court of Law; established, re-established, monumented, re-monumented, recovered, found as expressed below:

NOTE: Not more than 2 corners, all in the same town and range, may be recorded on this certificate.

A. Description of original monument and accessories and/or subsequent restoration:

1. CORNER SET BY MUSGROVE EVANS, U.S. DEPUTY SURVEYOR IN MARCH OF 1827. "SET 1/4 SEC. POST fw A" WITNESSED BY:

BEECH 14", S 80° W, 3 LKS. ( 1.98')

ELM 36", S 76° E, 14 LKS. ( 9.24')

GLO NOTES SHOW DISTANCES SOUTH OF 40 CH. (2640) AND NORTH OF 39.22 CH. (2588.52)

2. CORNER REFERENCED IN SURVEY BY T.J. BROWN, DEP. COUNTY SURVEYOR, DATED AUG. 17, 1864, AND RECORDED IN BOOK 3, PAGE 3, COUNTY SURVEYORS RECORDS. CORNER SHOWN AS "POST", NO WITNESSES GIVEN: SURVEY SHOWS DISTANCE WEST OF 40 CH. (2640') AND SOUTH OF 34.85 CH. (2300.10') TO RIVER BANK.

3. CORNER REFERENCED IN SURVEY BY T.J. BROWN, DEP. COUNTY SURVEYOR, DATED OCT. 20, 1870, AND RECORDED IN BOOK 3, PAGE 16, COUNTY SURVEYORS RECORDS. CORNER SHOWN AS "A STONE, THE TOP OF WHICH IS EVEN WITH THE SURFACE OF THE GROUND", NO WITNESSES GIVEN:

SURVEY SHOWS DISTANCE EAST OF 38.545 CH. (2543.97') AND SOUTH OF 34.95 CH. (2306.70') TO RIVER BANK.

4. CORNER REFERENCED IN SURVEY OF LANSING TOWNSHIP IN 1909 BY R.J.ROBB, IN BOOK 5, PAGE 218, AS "CEMENT POST", 2.5 FT. LONG, 3" SQUARE AT TOP AND 4" SQUARE AT BOTTOM, WITNESSED BY: D. BASSWOOD, 10", S. 23.7' AND ELM 10", S-E 7'. WEST, 21.5 FT. DEWITT COR. WEST 21.4' NO DISTANCES SHOWN ON SURVEY.

CONTINUED ON BACK

B. Description of corner evidence found and/or method applied in restoring or reestablishing corner:

SEARCHED AT APPARENT LOCATION OF CORNER AND 3/4" X 17" PINCH PIPE AS PER LCRC OF LIBER 1, PAGE 575. CORNER FALLS IN FRONT YARD OF HOUSE #2211 DELTA RIVER DRIVE. NO EXCAVATION PERFORMED AT THIS LOCATION. ACCEPTED LOCATION OF FOUND 3/4" PIPE AS CORNER AS RECORDED IN ITEM #8, TRAVERSED WEST 2663.32' TO B-2 AND NORTH 2562.43' TO C-1. SET STANDARD INGHAM COUNTY REMON. BAR WITH 2 1/2" ALUMINUM REMON. CAP.

THIS DOCUMENT IS BEING RE-RECORDED TO PROVIDE PEER REVIEW STAMP OF APPROVAL.

C. Description of monument for corner and accessories established to perpetuate locating the position of the corner:

C-2, T4N, R2W, LANSING TOWNSHIP, INGHAM COUNTY. SET STANDARD INGHAM COUNTY REMON. BAR WITH 2-1/2" ALUMINUM REMON. CAP. STAMPED #30090. WITNESSED BY:

NW COR.OF HOUSE #2827 ARLINGTON DR., N 86° E, 78.03'

NW COR.OF HOUSE #2211 DELTA RIVER DR., S 00° E, 30.35'

NE COR.OF GAR., #2217 DELTA RIVER DR., S 39° W, 39.83'

SET N&T #30090, N/S POWER POLE, S 87° W, 95.88'

FACE OF CURB, DELTA RIVER DR., N 15° W, 25.12'

BEARINGS GIVEN ARE MAGNETIC.



Signed by David R. Lohr

Date NOVEMBER 27, 2000

Surveyor's Michigan License No. 30090

C-2: LANSING TOWNSHIP, PART A CONTINUED:

5. CORNER REFERENCED IN THE PLAT OF DELTA GRANDE SUBDIVISION DATED JUNE 7, 1929, BY J.A DINSMORE, REG. CIVIL ENG., AND RECORDED IN LIBER 11 OF PLATS, PAGE 20. NO DISTANCE SHOWN NORTH TO THIS CORNER. NOTE: PLAT DOES NOT MENTION MONUMENT OR GIVE WITNESSES.
6. CORNER REFERENCED IN THE PLAT OF RIVER FOREST SUBDIVISION DATED SEPT. 18, 1946, BY CLYDE K. STEPHENS, CIVIL ENGINEER & LAND SURVEYOR, AND RECORDED IN LIBER 14 OF PLATS, PAGE 5. CORNER IS SHOWN AS "O" AND FALLS WITHIN LOT #69, 13.3 FT. SOUTH OF SOUTH ROW OF DELTA RIVER DRIVE.
7. CORNER REFERENCED IN THE PLAT OF LANTEX INDUSTRIAL PARK, DATED FEB. 11, 1966, BY CLYDE K. STEPHENS, CIVIL ENGINEER & LAND SURVEYOR, AND RECORDED IN LIBER 26 OF PLATS, PAGE 46. NO DISTANCE SHOWN SOUTH TO THIS CORNER.
8. CORNER REFERENCED IN LCRC, DATED NOV.19, 1971, BY CLYDE K. STEPHENS, RLS #3829 AND RECORDED IN LIBER 1, PAGE 575. "A 3/4" IRON PIPE WAS SET FROM OLD TIES FROM 1946 AND FROM DELTA GRANDE SUB. #1. WITNESSED BY:  
N0°50'W, 85.50 FEET TO A CONCRETE MONUMENT AT THE SE. CORNER OF DELTA GRANDE SUB. #1.  
NW CORNER OF A 1 STORY FRAME HOUSE, N85°33'E, 78.0'  
NW CORNER OF A 1 STORY FRAME HOUSE, #2211, S4°40'E, 30.35'  
N0°50'W, 25.20 FEET TO THE FACE OF THE CURB ON DELTA RIVER DRIVE
9. CORNER REFERENCED IN RECORDED SURVEY, DATED 07/12/76, BY JAMES STEPHENS, PS#16053, AND RECORDED IN LIBER 2, PAGE 854. "EAST 1/4 CORNER, SECTION 6, T4N, R2W, "3/4" IRON PIPE" SAME WITNESSES AS ABOVE.
10. CORNER REFERENCED IN RECORDED SURVEY, DATED 04/28/95, BY DAVID E. ERICKSON, PS#29245, AND RECORDED IN LIBER 7, PAGE 649. "WEST 1/4 CORNER, SECTION 5, (C-2) "END. PINCH PIPE"  
WITNESSED BY:  
N 86° E, 78.03', NW COR.OF 1 STORY HSE. (FOUND)  
S 5° E, 30.45', NW COR.OF 1 STORY HSE. #2211 (FOUND)  
N 1° W, 85.50', CONC. MON. @ SE. COR. DELTA GRANDE SUB. #1. (NOT MEASURED)  
S 41° W, 39.72', NE COR.OF GARAGE TO HSE. #2217. (FOUND)
11. NO OTHER REFERENCES FOUND.



2000-051291

Page: 2 of 2

11/30/2000 02:28P

# LAND CORNER RECORDATION CERTIFICATE

Filing Requirement of Act 74, Mich. P.A. 1970

For corners in

INGHAM

(County)

Located In:

Corner Code #

LANSING TOWNSHIP.

1. Public Land Survey

T 4N R 2W

C-2

T R

T R

T R

T R

T R

T R

T R

2. Property Controlling in Section

S T R

S T R

3. Miscellaneous Property in Sec.

S T R

S T R

4. Lot No. , Recorded Plat

5. Private Claims

Paula Johnson  
INGHAM COUNTY  
REGISTER OF DEEDS  
POLARIS SURVEYING CO

RECORDED

L-10 P-41

CRNR 11.00

2000-047317

Register of Deeds Stamp & File Number



2000-047317

Page: 1 of 2

11/07/2000 08:33A

	A	B	C	D	E	F	G	H	I	J	K	L	M
1													
2	6	5			4			3		2		1	
3													
4	7	8			9			10		11		12	
5													
6	18	17			16			15		14		13	
7													
8	19	20			21			22		23		24	
9													
10	30	29			28			27		26		25	
11													
12	31	32			33			34		35		36	
13													

I, DAVID R. LOHR

, in a field survey on 4/25 & 5/23, 2000, do hereby certify that under requirements of P.A. 74, Michigan P.A. of 1970, the corner points mentioned in lines 1 and 2 above were in conformance with regulations and rules therefore as required in the current manual of survey instructions of the United States Department of the Interior, Bureau of Land Management or by a decree of a Court of Law and/or that the corner points mentioned in lines 3, 4 and 5 above were in conformance with the rules of the Michigan Board of Land Surveyors or by a Decree of a Court of Law; established, re-established, monumented, re-monumented, recovered, found as expressed below:

NOTE: Not more than 2 corners, all in the same town and range, may be recorded on this certificate.

A. Description of original monument and accessories and/or subsequent restoration:

1. CORNER SET BY MUSGROVE EVANS, U.S. DEPUTY SURVEYOR IN MARCH OF 1827. "SET 1/4 SEC. POST fw A" WITNESSED BY:

BEECH 14", S 80° W, 3 LKS. ( 1.98')

ELM 36", S 76° E, 14 LKS. ( 9.24')

GLO NOTES SHOW DISTANCES SOUTH OF 40 CH. (2640) AND NORTH OF 39.22 CH. (2588.52)

2. CORNER REFERENCED IN SURVEY BY T.J. BROWN, DEP. COUNTY SURVEYOR, DATED AUG. 17, 1864, AND RECORDED IN BOOK 3, PAGE 3, COUNTY SURVEYORS RECORDS. CORNER SHOWN AS "POST", NO WITNESSES GIVEN:

SURVEY SHOWS DISTANCE WEST OF 40 CH. (2640') AND SOUTH OF 34.85 CH. (2300.10') TO RIVER BANK.

3. CORNER REFERENCED IN SURVEY BY T.J. BROWN, DEP. COUNTY SURVEYOR, DATED OCT. 20, 1870, AND RECORDED IN BOOK 3, PAGE 16, COUNTY SURVEYORS RECORDS. CORNER SHOWN AS "A STONE, THE TOP OF WHICH IS EVEN WITH THE SURFACE OF THE GROUND", NO WITNESSES GIVEN:

SURVEY SHOWS DISTANCE EAST OF 38.545 CH. (2543.97') AND SOUTH OF 34.95 CH. (2306.70') TO RIVER BANK.

4. CORNER REFERENCED IN SURVEY OF LANSING TOWNSHIP IN 1909 BY R.J. ROBB, IN BOOK 5, PAGE 218, AS "CEMENT POST", 2.5 FT. LONG, 3" SQUARE AT TOP AND 4" SQUARE AT BOTTOM, WITNESSED BY: D. BASSWOOD, 10", S. 23.7' AND ELM 10", S-E 7'. WEST, 21.5 FT. DEWITT COR. WEST 21.4' NO DISTANCES SHOWN ON SURVEY.

CONTINUED ON BACK

B. Description of corner evidence found and/or method applied in restoring or reestablishing corner:

SEARCHED AT APPARENT LOCATION OF CORNER AND 3/4" X 17" PINCH PIPE AS PER LCRC OF LIBER 1, PAGE 575. CORNER FALLS IN FRONT YARD OF HOUSE #2211 DELTA RIVER DRIVE. NO EXCAVATION PERFORMED AT THIS LOCATION. ACCEPTED LOCATION OF FOUND 3/4" PIPE AS CORNER AS RECORDED IN ITEM #8, TRAVERSED WEST 2663.32' to B-2 AND NORTH 2562.43' TO C-1. SET STANDARD INGHAM COUNTY REMON. BAR WITH 2 1/2" ALUMINUM REMON. CAP.

C. Description of monument for corner and accessories established to perpetuate locating the position of the corner:

C-2, T4N, R2W, LANSING TOWNSHIP, INGHAM COUNTY. SET STANDARD INGHAM COUNTY REMON. BAR WITH 2-1/2" ALUMINUM REMON. CAP. STAMPED #30090. WITNESSED BY:

NW COR. OF HOUSE #2827 ARLINGTON DR., N 86° E, 78.03'

NW COR. OF HOUSE #2211 DELTA RIVER DR., S 00° E, 30.35'

NE COR. OF GAR., #2217 DELTA RIVER DR., S 39° W, 39.83'

SET N&T #30090, N/S POWER POLE, S 87° W, 95.88'

FACE OF CURB, DELTA RIVER DR., N 15° W, 25.12'

BEARINGS GIVEN ARE MAGNETIC.



Signed by David R. Lohr

Date OCTOBER 24, 2000

Surveyor's Michigan License No. 30090

C-2: LANSING TOWNSHIP, PART A CONTINUED:

5. CORNER REFERENCED IN THE PLAT OF DELTA GRANDE SUBDIVISION DATED JUNE 7, 1929, BY J.A DINSMORE, REG. CIVIL ENG., AND RECORDED IN LIBER 11 OF PLATS, PAGE 20. NO DISTANCE SHOWN NORTH TO THIS CORNER. NOTE: PLAT DOES NOT MENTION MONUMENT OR GIVE WITNESSES.
6. CORNER REFERENCED IN THE PLAT OF RIVER FOREST SUBDIVISION DATED SEPT. 18, 1946, BY CLYDE K. STEPHENS, CIVIL ENGINEER & LAND SURVEYOR, AND RECORDED IN LIBER 14 OF PLATS, PAGE 5. CORNER IS SHOWN AS "O" AND FALLS WITHIN LOT #69, 13.3 FT. SOUTH OF SOUTH ROW OF DELTA RIVER DRIVE.
7. CORNER REFERENCED IN THE PLAT OF LANTEX INDUSTRIAL PARK, DATED FEB. 11, 1966, BY CLYDE K. STEPHENS, CIVIL ENGINEER & LAND SURVEYOR, AND RECORDED IN LIBER 26 OF PLATS, PAGE 46. NO DISTANCE SHOWN SOUTH TO THIS CORNER.
8. CORNER REFERENCED IN LCRC, DATED NOV.19, 1971, BY CLYDE K. STEPHENS, RLS #3829 AND RECORDED IN LIBER 1, PAGE 575. "A 3/4" IRON PIPE WAS SET FROM OLD TIES FROM 1946 AND FROM DELTA GRANDE SUB. #1. WITNESSED BY:  
N0°50'W, 85.50 FEET TO A CONCRETE MONUMENT AT THE SE. CORNER OF DELTA GRANDE SUB. #1.  
NW CORNER OF A 1 STORY FRAME HOUSE, N85°33'E, 78.0'  
NW CORNER OF A 1 STORY FRAME HOUSE, #2211, S4°40'E, 30.35'  
N0°50'W, 25.20 FEET TO THE FACE OF THE CURB ON DELTA RIVER DRIVE
9. CORNER REFERENCED IN RECORDED SURVEY, DATED 07/12/76, BY JAMES STEPHENS, PS#16053, AND RECORDED IN LIBER 2, PAGE 854. "EAST 1/4 CORNER, SECTION 6, T4N, R2W, "3/4" IRON PIPE" SAME WITNESSES AS ABOVE.
10. CORNER REFERENCED IN RECORDED SURVEY, DATED 04/28/95, BY DAVID E. ERICKSON, PS#29245, AND RECORDED IN LIBER 7, PAGE 649. "WEST 1/4 CORNER, SECTION 5, (C-2) "END. PINCH PIPE"  
WITNESSED BY:  
N 86° E, 78.03', NW COR.OF 1 STORY HSE. (FOUND)  
S 5° E, 30.45', NW COR.OF 1 STORY HSE. #2211 (FOUND)  
N 1° W, 85.50', CONC. MON. @ SE. COR. DELTA GRANDE SUB. #1. (NOT MEASURED)  
S 41° W, 39.72', NE COR.OF GARAGE TO HSE. #2217. (FOUND)
11. NO OTHER REFERENCES FOUND.



2000-047317

Page: 2 of 2

11/07/2000 08:33A

LAND CORNER RECORDATION CERTIFICATE  
Filing Requirement of Act 74, Mich. P.A. 1970

For corners in

INGHAM

(County)

Located In:

Corner Code #

LANSING TOWNSHIP.

1. Public Land Survey

T 4N R 2W

C-3

2. Property Controlling  
in Section

S T R

3. Miscellaneous  
Property in Sec.

S T R

4. Lot No. , Recorded Plat

5. Private Claims

Paula Johnson  
INGHAM COUNTY  
REGISTER OF DEEDS  
POLARIS SURVEYING CO

RECORDED

L-10 P-43

CRNR 11.00

2000-047318

Register of Deeds Stamp & File Number

2000-047318  
Page: 1 of 2  
11/07/2000 08:33A

I, DAVID R. LOHR, in a field survey on OCT. 18, 2000, do hereby certify that under requirements of P.A. 74, Michigan P.A. of 1970, the corner points mentioned in lines 1 and 2 above were in conformance with regulations and rules therefore as required in the current manual of survey instructions of the United States Department of the Interior, Bureau of Land Management or by a decree of a Court of Law and/or that the corner points mentioned in lines 3, 4 and 5 above were in conformance with the rules of the Michigan Board of Land Surveyors or by a Decree of a Court of Law; established, re-established, monumented, re-monumented, recovered, found as expressed below:

NOTE: Not more than 2 corners, all in the same town and range, may be recorded on this certificate.

A. Description of original monument and accessories and/or subsequent restoration:

1. CORNER SET BY MUSGROVE EVANS, U.S. DEPUTY SURVEYOR IN MARCH OF 1827. "SET POST COR. TO SECS. 5, 6, 7 & 8, fw A" WITNESSED BY:

BEECH 10", N 73° W, 13 LKS. ( 8.58')

B. OAK 12", N 35° E, 14 LKS. ( 9.24')

GLO NOTES SHOW DISTANCES NORTH AND SOUTH OF 40 CH. (2640) EAST OF 39.91 CH. (2634.06') AND WEST OF 40 CH. (2640')

2. CORNER REFERENCED IN SURVEY BY T.J. BROWN, DEP. COUNTY SURVEYOR, DATED AUG. 29, 1864, AND RECORDED IN BOOK 3, PAGE 14, COUNTY SURVEYORS RECORDS. CORNER SHOWN AS "POINT A", WITNESSED BY:

BEECH 10", N 73° W, 13 LKS. ( 8.58') AND RED OAK 16", N 35° E, 14 LKS. ( 9.24')

3. CORNER REFERENCED IN SURVEY OF LANSING TOWNSHIP IN 1909 BY R.J.ROBB, IN BOOK 5, PAGE 218, AS "CEMENT POST", 2.5 FT. LONG, 3" SQUARE AT TOP AND 4" SQUARE AT BOTTOM, WITNESSED BY: RIVERBANK NORTH 24.4', RIVERBANK WEST, 21'. NO OTHER WITNESSES. NO DISTANCES SHOWN ON SURVEY.

4. CORNER REFERENCED IN SURVEY BY C.M. CADE, CITY OF LANSING ENGINEER, NOT DATED (CIRCA 1921) "A CEMENT POST WAS FOUND AT THIS POINT. T.J. BROWN USED THE POINT IN 1884. BATEMAN REFUSES TO ACCEPT THE POINT AS MARKED BY ROBB OWING TO DISCREPANCIES IN MEASUREMENT TO SOUTH AND EAST. NO NEW MARK WAS SET" NO WITNESSES GIVEN.

NOTE: NO MENTION OF WHAT THE DISCREPANCIES MAY HAVE BEEN BETWEEN BATEMAN'S SURVEY AND ROBB'S SURVEY.ROBB GIVES NO DISTANCES TO ADJACENT CORNERS.

CONTINUED ON BACK

B. Description of corner evidence found and/or method applied in restoring or reestablishing corner:

SEARCHED AT APPARENT LOCATION OF CORNER AND FOUND BATEMAN'S MONUMENT OF 1928 (ITEM A-5). CORNER CONSISTS OF A 4" X 4" SQUARE CONCRETE MONUMENT EXTENDING ABOUT 12" OUT OF GROUND, LEANING TO THE NORTHEAST, ALONG THE SOUTH BANK OF THE GRAND RIVER AS PER LCRC OF LIBER 7, PAGE 331. EXCAVATED AROUND MONUMENT AND FOUND IT TO BE AT LEAST 3.5 FT. IN LENGTH. RE-ALIGNED MONUMENT TO PLUMB POSITION AND REWITNESSED. SURROUNDED RE-ALIGNED MONUMENT WITH CONCRETE RIP-RAP, BRICKS, ROCKS AND CONCRETE MIX TO STABILIZE IT'S POSITION. ACCEPTED LOCATION OF FOUND 4" X 4" MONUMENT AS CORNER. SET #4 REBAR WITH PLASTIC SURVEY CAP MARKED PS 30090 INSIDE OF 3/4" PIPE.

C. Description of monument for corner and accessories established to perpetuate locating the position of the corner:

C-3, T4N, R2W, LANSING TOWNSHIP, INGHAM COUNTY. FOUND 4" X 4" CONCRETE MONUMENT. WITNESSED BY:

FD. N&T #18998, E/S 36" RED OAK, S 25° W, 21.21'

SET N&T #30090, N/S WOOD POST, S 84° E, 37.53'

SET N&T #30090, S/S 14" ASH, S 50° E, 53.80'

FD. N&T #18998, S/S 30" RED OAK, N 38° W, 8.45'

SET N&T #30090, N/S 7" MAPLE, N 62° E, 21.28'

BEARINGS GIVEN ARE MAGNETIC.

Signed by David R. Lohr

Date OCTOBER 24, 2000

Surveyor's Michigan License No. 30090



FORM APPROVED BY MICHIGAN STATE BOARD OF LAND SURVEYORS, JAN. 28, 1971

REVISED MAY 14, 1976

REVISED JAN., 1983

REVISED OCT, 1995

ADAPTED FOR WORD PROCESSING JAN, 1999

P.A. 345 INGHAM COUNTY  
PEER APPROVED 10/3/2000 M

C-3: LANSING TOWNSHIP, PART A CONTINUED:

5. CORNER REFERENCED IN ASSESSOR'S PLAT NO. 11, DATED APRIL 28, 1928, BY A. N. BATEMAN, REGISTERED SURVEYOR, AND RECORDED IN LIBER 10 OF PLATS, PAGE 14, INGHAM COUNTY RECORDS. CORNER DESCRIBED AS "N.W. COR., SEC. 8" A "PERMANENT METAL MONUMENT... ONE INCH IN DIAMETER AND FIVETEEN INCHED IN LENGTH SET IN A CONCRETE BASE FOUR INCHES IN DIAMETER AND FORTY-EIGHT INCHES IN DEPTH."
6. CORNER REFERENCED IN LCRC, DATED 01/28/80, BY RONNIE M. LESTER, RLS #18998, RECORDED IN LIBER 6, PAGE 35. "FOUND 1/2" PIPE IN SQUARE CONCRETE MONUMENT 20' EAST OF EAST BANK OF THE GRAND RIVER. ACCEPTED 1/2" PIPE IN SQUARE CONCRETE MONUMENT AS THAT IDENTIFIED IN CADE'S SURVEY AS CORNER AS THERE HAS BEEN EVIDENCE FOUND TO DISPUTE LOCATION." WITNESSED BY:
  - NAIL & TAG, #18998, S/S 20" OAK, WNW, 7.87'
  - NAIL & TAG, #18998, W/S 8" OAK, NORTH, 13.97'
  - NAIL & TAG, #18998, N/S 4" MAPLE, EAST, 41.13'
  - NAIL & TAG, #18998, E/S 24" OAK, SOUTH, 22.16'
7. CORNER REFERENCED IN LCRC, DATED 07/01/93, BY MARK W. WITALEC, LLS#30897, RECORDED IN LIBER 7, PAGE 331. "FOUND 4" SQUARE CONC. MONUMENT WITH 3/4" IRON PIPE CAST IN CENTER. (MON. LEANS TO N.W. USED CENTERLINE AT GROUND LEVEL)" WITNESSED BY:
  - W.N.W. 8.0' TO N. & T. #18998, S. SIDE 22" OAK
  - N. 14.34' TO N. & T. #18998, W. SIDE 7" TREE
  - E. 41.1'+/- TO MAPLE STUMP
  - S. 21.70' TO N. & T. #18998, E. SIDE 34" OAK
  - E. 37.85' TO SPIKE IN N. SIDE VERT. TIMBER POST
8. CORNER REFERENCED IN SURVEY, DATED 11/04/94, BY MARK W. WITALEC, LLS#30897, AND RECORDED IN LIBER 7, PG.428. SAME DESCRIPTION AND WITNESSES AS ABOVE. SURVEY SHOWS DISTANCE SOUTH TO C-4 OF 2638.98 FT.
9. CORNER REFERENCED IN SURVEY, DATED 02/24/97, BY MARK W. WITALEC, LLS#30897, AND RECORDED IN LIBER 7, PAGE 1022. SAME DESCRIPTION AND WITNESSES AS ABOVE. SURVEY SHOWS DISTANCE EAST TO D-3 OF 2631.68 FT.
10. CORNER REFERENCED IN SURVEY, DATED 03/05/97, BY MARK W. WITALEC, LLS#30897, AND RECORDED IN LIBER 7, PAGE 1061. SAME DESCRIPTION AND WITNESSES AS ABOVE. SURVEY SHOWS DISTANCE EAST TO D-3 OF 2631.68 FT.
11. CORNER REFERENCED IN SURVEY, DATED 06/30/97, BY MARK W. WITALEC, LLS#30897, AND RECORDED IN LIBER 7, PAGE 1194. SAME DESCRIPTION AND WITNESSES AS ABOVE. SURVEY SHOWS DISTANCE EAST TO D-3 OF 2631.68 FT.
12. NO OTHER REFERENCES FOUND.



2000-047318  
Page: 2 of 2  
11/07/2000 08:33A



LAND CORNER RECORDATION CERTIFICATE  
Filing Requirement of Act 74, Mich. P.A. 1970

For corners in  
INGHAM  
(County)

Located In:

Corner Code #

LANSING TOWNSHIP.

1. Public Land Survey

T 4N R 2W

D-1

T        R       

T        R       

T        R       

S        T        R       

S        T        R       

S        T        R       

S        T        R       

2. Property Controlling  
in Section

3. Miscellaneous  
Property in Sec.

4. Lot No.       , Recorded Plat       

5. Private Claims       

Paula Johnson  
INGHAM COUNTY  
REGISTER OF DEEDS  
POLARIS SURVEYING CO

RECORDED

**L-10 P-45**

CRNR 11.00

2000-047319

Register of Deeds Stamp & File Number



2000-047319

Page: 1 of 2

11/07/2000 08:33A

	A	B	C	D	E	F	G	H	I	J	K	L	M
1													
2	6	5	4	3	2	1							
3													
4	7	8	9	10	11	12							
5													
6	18	17	16	15	14	13							
7													
8	19	20	21	22	23	24							
9													
10	30	29	28	27	26	25							
11													
12	31	32	33	34	35	36							
13													

I, DAVID R. LOHR

, in a field survey on MAY 24, 2000,  
do hereby certify that under requirements of P.A. 74, Michigan P.A. of 1970, the corner points mentioned  
in lines 1 and 2 above were in conformance with regulations and rules therefore as required in the  
current manual of survey instructions of the United States Department of the Interior, Bureau of Land  
Management or by a decree of a Court of Law and/or that the corner points mentioned in lines 3, 4 and 5  
above were in conformance with the rules of the Michigan Board of Land Surveyors or by a Decree of a  
Court of Law; established, re-established, monumented, re-monumented, recovered, found as  
expressed below:

NOTE: Not more than 2 corners, all in the same town and range, may be recorded  
on this certificate.

A. Description of original monument and accessories and/or subsequent restoration:  
1. CORNER NOT SET IN ORIGINAL GOVERNMENT SURVEY.

2. CORNER REFERENCED IN SURVEY OF LANSING TOWNSHIP IN 1909 BY R.J.ROBB, COUNTY SURVEYOR, IN BOOK 5,  
PAGE 218, AS "CEMENT POST", 2.5 FT. LONG, 3" SQUARE AT TOP AND 4" SQUARE AT BOTTOM, WITNESSED BY:  
"HICK. 6" SOUTH, 6' AND HICK. 8" S-E, 16'. NO DISTANCES TO ADJACENT CORNERS SHOWN ON SURVEY.

3. CORNER REFERENCED IN LCRC, DATED 9/27/84, BY LARRY A. BRYAN, LS#25832, AND RECORDED IN LIBER 6,  
PAGE 266. "FOUND OLD TRIANGULAR IRON PLATE." WITNESSES BY: SET NAIL & TAG, EAST SIDE 22"  
HICKORY, S 45° W, 9.57'

SET NAIL & TAG, NORTH SIDE 20" HICKORY, S 45° E, 10.40'  
NORTHWEST CORNER CONCRETE HEADWALL, N 15° E, 36.50'  
C/L CORNER POST FOUND., SOUTH 1/4 CORNER, SECTION 32, T5N,  
R2W, WEST, 6.45'

CONTINUED ON PAGE 2:

B. Description of corner evidence found and/or method applied in restoring or reestablishing corner:

SEARCHED AT APPARENT LOCATION OF CORNER AND FOUND 3/4" PIPE & CAP #25828 AS INDICATED IN ITEM #5,  
PART A. EXCAVATED AREA 1.5' X 1.5' X 24" DEEP, FOUND ONLY CLEAN SAND. BOTH OF SURVEYOR'S ROBB'S  
1909 WITNESS TREES ARE STANDING, ALTHOUGH THE TREE TO THE SOUTH IS DEAD. SURVEYOR ROBB RECOVERED  
AND WITNESSED THE CORNER FOR D-13, DEWITT TWP., NOT D-1, LANSING TWP., AS HE INDICATES IN HIS NOTES.  
ACCEPTED LOCATION OF FOUND 3/4" PIPE AS CORNER. SET STANDARD 3/4" X 24" INGHAM COUNTY REMON. BAR  
WITH 2-1/2" ALUMINUM REMON. CAP STAMPED #30090, IN LOCATION OF FOUND 3/4" PIPE. MEASURED EAST  
2625.39 FT. TO E-1 AND WEST 2625.29 FT. TO C-1.

C. Description of monument for corner and accessories established to perpetuate locating the position of the corner:

D-1, T4N, R2W, LANSING TOWNSHIP, INGHAM COUNTY. SET STANDARD INGHAM COUNTY REMON. BAR AND ALUMINUM  
REMON. CAP. STAMPED 30090 IN LOCATION OF FOUND 3/4" PIPE. WITNESSED BY:

FD. N/T #13039, E/S DEAD 14" HICKORY, S 49° W, 9.70'

FD. N/T #13039, SE/S 14" HICKORY, S 53° E, 10.45'

FD. N/T #13039, N/S 12" DIA. WOOD POST, N 78° W, 3.93'

FD. IRON/CAP #25828, IN 18" DIA. CONCETE BASE, WEST, 6.50'  
(D-13, DEWITT TOWNSHIP)

BEARINGS GIVEN ARE MAGNETIC.



Signed by David R. Lohr

Date SEPT. 27, 2000

Surveyor's Michigan License No. 30090

FORM APPROVED BY MICHIGAN STATE BOARD OF LAND SURVEYORS, JAN. 28, 1971  
REVISED MAY 14, 1976  
REVISED JAN., 1983  
REVISED OCT, 1985  
ADAPTED FOR WORD PROCESSING JAN, 1989

P.A. 345 INGHAM COUNTY  
PEER APPROVED 10/03/2000 W

D-1: LANSING TOWNSHIP, PART A CONTINUED:

4. FOUND PIPE SET BY PETER BEAVER, PS #25828, ON NOVEMBER 13, 1991, DURING A SURVEY OF THE NORTH LOGAN GOVERNMENT COMPLEX. NO LCRC WAS RECORDED FOR THIS CORNER, HOWEVER, SURVEYOR BEAVER HAS PROVIDED A LETTER DATED 8/09/2000, STATING THAT HE SET A 3/4" PIPE AND CAP #25828 AT THE LOCATION OF THE FOUND TRIANGULAR STEEL PLATE, AND THAT AN LCRC FORM WAS NOT RECORDED FOR THE CORNER.

5. CORNER REFERENCED IN LCRC, DATED 10/27/94, BY MARK W. WITALEC, LS#30897, AND RECORDED IN LIBER 8, PAGE 419. "FOUND 3/4" IRON PIPE WITH SURVEYOR'S IDENTIFICATION CAP #25828.(BEAVER) REMAINING WITNESSES FROM THE CORNER CERTIFICATE NOTED ABOVE (L.6, P.266) CHECK WELL WITH THIS LOCATION.

WITNESSED BY:

S 45° W, 9.67' TO NAIL AND BRASS TAG #25832 IN E/S OF 18" HICKORY TREE  
S 45° E, 10.40' TO NAIL AND BRASS TAG #25832 IN N. SIDE OF HICKORY TREE  
N 15° E, 36.44' TO 1.1' WIDE CONCRETE HEADWALL(W'LY CORNER OF SW'LY END  
OF HEADWALL)

W. 3.87' TO FORM NAIL AND TAG IN S.SIDE OF 5' HIGH, 12" DIA. WOOD FENCE  
POST

S 1.4' TO 5' HIGH CHAIN LINK FENCE

W 8.4' TO 5' HIGH CHAIN LINK FENCE

W 6.48' TO FOUND IRON WITH IDENTIFICATION CAP #25828(BEAVER) IN 18"  
DIA. CONCETE

E.LY 2625.62' TO COR. E-1 (NE COR., SECTION 5)

6. NO OTHER REFERENCES FOUND.



2000-047319

Page: 2 of 2

11/07/2000 08:33A

# LAND CORNER RECORDATION CERTIFICATE

Filing Requirement of Act 74, Mich. P.A. 1970

For corners in

INGHAM

(County)

Located In:

Corner Code #

LANSING TOWNSHIP.

1. Public Land Survey

T 4N R 2W

D-2

T R

T R

T R

T R

T R

T R

2. Property Controlling in Section

S T R

S T R

3. Miscellaneous

S T R

Property in Sec.

S T R

Paula Johnson  
INGHAM COUNTY  
REGISTER OF DEEDS  
POLARIS SURVEYING CO

RECORDED

L-10 P-55

CRNR 9.00

2000-047324

Register of Deeds Stamp & File Number

4. Lot No. , Recorded Plat

5. Private Claims



2000-047324

Page: 1 of 1

11/07/2000 08:33A

I, DAVID R. LOHR

, in a field survey on 4/25 & 5/23, 2000, do hereby certify that under requirements of P.A. 74, Michigan P.A. of 1970, the corner points mentioned in lines 1 and 2 above were in conformance with regulations and rules therefore as required in the current manual of survey instructions of the United States Department of the Interior, Bureau of Land Management or by a decree of a Court of Law and/or that the corner points mentioned in lines 3, 4 and 5 above were in conformance with the rules of the Michigan Board of Land Surveyors or by a Decree of a Court of Law; established, re-established, monumented, re-monumented, recovered, found as expressed below:

NOTE: Not more than 2 corners, all in the same town and range, may be recorded on this certificate.

	A	B	C	D	E	F	G	H	I	J	K	L	M
1													
2	6	5			4			3		2		1	
3													
4	7	8	9		10			11		12			
5													
6	18	17	16		15			14		13			
7													
8	19	20	21		22			23		24			
9													
10	30	29	28		27			26		25			
11													
12	31	32	33		34			35		36			
13													

A. Description of original monument and accessories and/or subsequent restoration:

1. CORNER NOT SET IN ORIGINAL GOVERNMENT SURVEY:

2. CORNER REFERENCED IN SURVEY BY T.J. BROWN, DEP. COUNTY SURVEYOR, DATED OCT. 20, 1870, AND RECORDED IN BOOK 3, PAGE 16, COUNTY SURVEYORS RECORDS. SURVEY SHOWS CORNER SHOWN AS POINT "O", BUT I FIND NO WITNESSES GIVEN: SURVEY SHOWS DISTANCE WEST OF 38.545 CH. (2543.97')

3. CORNER REFERENCED IN PLAT OF M. MITSHKUN'S OAK GROVE SUBDIVISION, BY JOHN A. DENSMORE, CIVIL ENGINEER, DATED NOV. 3, 1924, AND RECORDED IN LIBER 8 OF PLATS, PAGE 27. CORNER NOTED AS CENTER OF SECT. 5, BUT NO DISTANCES GIVEN TO LOT CORNERS.

4. CORNER REFERENCED IN PLAT OF RIVER FOREST NORTH PLAT, BY RICHARD R. SNOW ??, CIVIL ENGINEER, DATED APRIL 22, 1926, AND RECORDED IN LIBER 9 OF PLATS, PAGE 17. CORNER SHOWN AS NORTHEAST CORNER OF PLAT AND LOT 16.

5. CORNER REFERENCED IN SUPERVISOR'S PLAT OF CYNWOOD HEIGHTS, BY FRANCIS N. BATEMAN, REGISTERED SURVEYOR, DATED OCTOBER 7, 1927, AND RECORDED IN LIBER 9 OF PLATS, PAGE 48. CORNER SHOWN AS NORTHWEST CORNER OF LOT 35 AND IDENTIFIED AS A 1" X 15' (PIPE?) SET IN 4" X 48" CONCRETE.

6. CORNER REFERENCED IN SURVEY BY FRED N. WHITE, RLS #12034, DATED 12/05/83, AND RECORDED IN LIBER 4, PAGE 880. NO REFERENCES TO MONUMENT OR WITNESSES GIVEN.

7. CORNER REFERENCED IN RECORDED SURVEY, DATED 04/28/95, BY DAVID E. ERICKSON, PS#29245, AND RECORDED IN LIBER 7, PAGE 649. "CENTER SECTION 5, (D-2) "END. 4" CONC. MON. W/STL.CASING ON S. SIDE E-W WOOD FENCE". SURVEY SHOWS DISTANCE WEST TO C-2 OF 2580.42'. CORNER WITNESSED BY:

S 60° E, 56.57', SW COR. OF HSE. #2841 FOUNDATION

S 75° E, 52.78', NW COR. OF HSE. #2841 FOUNDATION

SOUTH, 22.63', SET N&T #29245 IN E. FACE OF 10" MAPLE

S 13° E, 24.25', NW COR. OF GARAGE FOUNDATION #2841.

8. NO OTHER REFERENCES FOUND.

B. Description of corner evidence found and/or method applied in restoring or reestablishing corner:

SEARCHED AT APPARENT LOCATION OF CORNER AND FOUND 4" CONCRETE MONUMENT IN STEEL SLEEVE AS PER SURVEY OF LIBER 7, PAGE 649. ACCEPTED LOCATION OF CORNER AS BEING THE NORTHWEST CORNER OF SP. PLAT OF CYNWOOD HEIGHTS (ITEM #5), AND THE CENTER OF SECTION 5 (ITEM #3). SET STANDARD INGHAM COUNTY REMON. ALUMINUM CAP STAMPED #30090 ON 1/2" IRON SET INSIDE MON. PIPE. TOP OF CAP IS 4" ABOVE TOP OF MONUMENT. NO TRAVERSING WAS PERFORMED TO THIS CORNER.

C. Description of monument for corner and accessories established to perpetuate locating the position of the corner:

D-2, T4N, R2W, LANSING TOWNSHIP, INGHAM COUNTY. FOUND CONCRETE MONUMENT AND SET STANDARD INGHAM COUNTY REMON. ALUMINUM REMON. CAP. WITNESSED BY:

SW COR. HOUSE FOUND. #2841 MILDRED ST., S 53° E, 56.60'

NW COR. HOUSE FOUND. #2841 MILDRED ST., S 70° E, 52.85'

NW COR. GARAGE FOUND. #2841 MILDRED ST., S 10° E, 24.20'

SET N&T #30090, E/S 10" MAPLE, DUE SOUTH, 22.63'

BEARINGS GIVEN ARE MAGNETIC.

Signed by

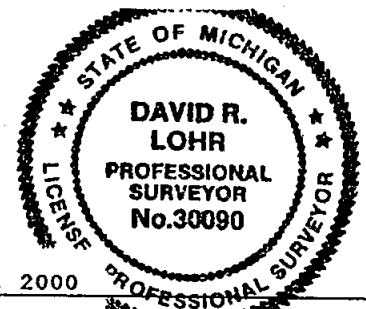
David R. Lohr

Date

OCTOBER 24, 2000

Surveyor's Michigan License No.

30090



FORM APPROVED BY MICHIGAN STATE BOARD OF LAND SURVEYORS, JAN. 28, 1971

REVISED MAY 14, 1976

REVISED JAN., 1983

REVISED OCT. 1995

ADAPTED FOR WORD PROCESSING JAN, 1999

P.A. 345 INGHAM COUNTY

PEER APPROVED 6/20/2000 M

LAND CORNER RECORDATION CERTIFICATE  
Filing Requirement of Act 74, Mich. P.A. 1970

For corners in

INGHAM

(County)

Located In:

Corner Code #

LANSING TOWNSHIP.

1. Public Land Survey

T 4N R 2W

D-3

T R

T R

T R

T R

2. Property Controlling  
in Section

S

T R

3. Miscellaneous  
Property in Sec.

S

T R

4. Lot No. , Recorded Plat

S

T R

5. Private Claims

Paula Johnson  
INGHAM COUNTY  
REGISTER OF DEEDS  
POLARIS SURVEYING CO

RECORDED

L-10 P-47

CRNR 11.00

2000-047320

Register of Deeds Stamp & File Number



2000-047320

Page: 1 of 2

11/07/2000 08:33A

	A	B	C	D	E	F	G	H	I	J	K	L	M
1													
2	6	5	4	3	2	1							
3													
4	7	8	9	10	11	12							
5													
6	18	17	16	15	14	13							
7													
8	19	20	21	22	23	24							
9													
10	30	29	28	27	26	25							
11													
12	31	32	33	34	35	36							
13													

I, DAVID R. LOHR

, in a field survey on MAY 24, 2000,  
do hereby certify that under requirements of P.A. 74, Michigan P.A. of 1970, the corner points mentioned  
in lines 1 and 2 above were in conformance with regulations and rules therefore as required in the  
current manual of survey instructions of the United States Department of the Interior, Bureau of Land  
Management or by a decree of a Court of Law and/or that the corner points mentioned in lines 3, 4 and 5  
above were in conformance with the rules of the Michigan Board of Land Surveyors or by a Decree of a  
Court of Law; established, re-established, monumented, re-monumented, recovered, found as  
expressed below:

NOTE: Not more than 2 corners, all in the same town and range, may be recorded  
on this certificate.

A. Description of original monument and accessories and/or subsequent restoration:  
1. CORNER SET BY MUSCROVE EVANS, U.S. DEPUTY SURVEYOR IN MARCH OF  
1827.

"SET 1/4 SEC. POST AT AV. DIST. ON TRUE LINE" WITNESSED BY:

BEECH 10", S 80° W, 31 LKS. (20.46')

SUGAR 24", N 08° E, 43 LKS. (28.38')

GLO NOTES SHOW DISTANCES EAST OF 39.90 CH. (2633.40') AND WEST OF 39.91 CH. (2634.06')

2. CORNER REFERENCED IN SURVEY BY T.J. BROWN, DEP. COUNTY SURVEYOR, DATED AUG. 29, 1864, AND RECORDED  
IN BOOK 3, PAGE 14, COUNTY SURVEYORS RECORDS. CORNER SHOWN AS "POINT C", WITNESSED BY:  
BEECH 18", S 53-1/2° E, 26 LKS. ( 17.16') AND RED ELM 9", N 06-3/4° W, 9-1/2 LKS. ( 6.27')  
SURVEY SHOWS DISTANCE SOUTH OF 39.74 CH. (2622.84') NO OTHER DISTANCES GIVEN
3. CORNER REFERENCED IN SURVEY OF LANSING TOWNSHIP IN 1909 BY R.J. ROBB, IN BOOK 5, PAGE 218, AS "CEMENT  
POST", 2.5 FT. LONG, 3" SQUARE AT TOP AND 4" SQUARE AT BOTTOM, WITNESSED BY: "STONE SET BY  
BARTHOLEMEW, 28.5' SOUTH". NO OTHER WITNESSES. NO DISTANCES SHOWN ON SURVEY.

CONTINUED ON BACK

B. Description of corner evidence found and/or method applied in restoring or reestablishing corner:

SEARCHED AT APPARENT LOCATION OF CORNER AND FOUND CADE'S 1921 MONUMENT AS PER LCRC OF LIBER 6,  
PAGE 289. MONUMENT IS ON SOUTH EDGE OF GRAVEL OF MUSKEGON STREET. NO EXCAVATION PERFORMED AT  
THIS LOCATION. TALKED TO ADJACENT LANDOWNER, HE INFORMED ME THAT CAST IRON COVER WAS REMOVED  
FROM MONUMENT DUE TO SNOW PLOWING AND HAS BEEN LYING IN HIS YARD FOR A NUMBER OF YEARS WAITING  
FOR THE CITY OF LANSING TO REMOVE IT. REMOVED COVER AND CLEANED UP BROKEN CONCRETE RING AND HAULED  
AWAY DEBRIS. CAST IRON COVER NOT RESET OVER MONUMENT, BECAUSE IF IT WERE, TOP OF IT WOULD PROTRUDE  
ABOVE GRAVEL SURFACE, AS TOP OF MONUMENT IS ONLY ABOUT 7-1/2" BELOW GRAVEL, WHILE CAST IRON COVER  
IS 9" IN HEIGHT. ACCEPTED LOCATION OF FOUND 9" MONUMENT AS CORNER. SET STANDARD INGHAM COUNTY REMON.  
ALUMINUM REMON. CAP. ON TOP BAR IN MONUMENT.

C. Description of monument for corner and accessories established to perpetuate locating the position of the corner:  
D-3, T4N, R2W, LANSING TOWNSHIP, INGHAM COUNTY. FOUND CADE'S 1921 MONUMENT, SET STANDARD INGHAM  
COUNTY REMON. ALUMINUM REMON. CAP. ON TOP OF MONUMENT. WITNESSED BY:

SET N&T #30090, SE/S P. POLE, N 58° E, 43.36'

SET N&T #30090, W/S 22" MAPLE, S 62° E, 18.08'

FD. "T" IRON, DUE SOUTH, 24.60'

NE COR. HOUSE 1425 MUSKEGON, S 10° W, 49.68'

SET N&T #30090, S/S P. POLE, N 75° W, 109.32'

FD. "X" IN SE COR. CONC. PUMP HSE. SLAB, N 50° W, 104.42'

BEARINGS GIVEN ARE MAGNETIC.

Signed by

David R. Lohr

Date OCTOBER 24, 2000

Surveyor's Michigan License No. 30090



FORM APPROVED BY MICHIGAN STATE BOARD OF LAND SURVEYORS, JAN. 28, 1971  
REVISED MAY 14, 1975  
REVISED JAN., 1983  
REVISED OCT, 1985  
ADAPTED FOR WORD PROCESSING JAN, 1999

P.A. 345 INGHAM COUNTY  
PEER APPROVED 6/20/2000 RL

D-3: LANSING TOWNSHIP, PART A CONTINUED:

5. CORNER REFERENCED IN PLAT OF "BASSETT'S SUBDIVISION", DATED APRIL 27, 1917, BY A.N. BATEMAN, RECORDED IN LIBER 6 OF PLATS, PAGE 21, INGHAM COUNTY RECORDS. NO REFERENCE TO MONUMENT OR WITNESSES GIVEN. PLAT SHOWS REFERENCE MONUMENT (ROW OF MUSKEGON ST.) TO BE SOUTH 25 FEET.
6. CORNER REFERENCED IN SURVEY BY C.M. CADE, CITY OF LANSING ENGINEER, NOT DATED (CIRCA 1921) "THIS POST (ROBB'S MONUMENT) WAS RECOVERED BY CADE IN 1919... IT WAS EVIDENTLY AT THE INTERSECTION OF FENCES RUNNING EAST AND WEST AND SOUTH AND HAS BEEN USED BY BATEMAN IN SURVEYS IN THE VICINITY, BEING ACCEPTED BY HIM AS THE TRUE CORNER. THE COMPUTED DISTANCE TO THE CENTER OF SECTION 8 (SOUTH) IS 2631.70 FEET. SET A STANDARD 1921 MONUMENT." WITNESSED BY:  
5" WILD CHERRY (1 OF 3), S 77° 45' E, 41.3'
7. CORNER REFERENCED IN "ASSESSORS PLAT NO. 12," DATED APRIL 24, 1928, BY A.N. BATEMAN, AND RECORDED IN LIBER 10 OF PLATS, PAGE 15, INGHAM COUNTY RECORDS. NO WITNESSES GIVEN. PLAT SHOWS CORNER TO BE A 4" X 48" CONCRETE MONUMENT, AND THE NORTHWEST CORNER OF LOT 24.
8. CORNER REFERENCED IN LCRC, DATED 01/22/80, BY RONNIE M. LESTER, RLS#18998, AND RECORDED IN LIBER 6, PAGE 43. "FOUND 9" DIAMETER CONCRETE MONUMENT WITH 5/8" BAR (CADE'S STANDARD 1921 CITY LANSING MONUMENT) ... ACCEPTED CONCRETE MONUMENT ... AS PERPETUATION OF CORNER AS CALLED FOR BY C.M. CADE. WITNESSED BY:  
SE COR. OF BRICK BOARD OF WATER AND LIGHT PUMP HOUSE, NW, 104.24' (FOUND)  
NAIL & TAG, #18998, E/S 18" ASH, NORTH, 49.16' (GONE)  
NAIL & TAG, #18998, W/S 18" MAPLE, EAST, 18.18' (FOUND)  
NE CORNER OF HOUSE #1425, SSW, 49.68' (FOUND)
9. CORNER REFERENCED IN SURVEY BY GEORGE M. YOUNG, RLS #17640, DATED 3/31/82 AND RECORDED IN LIBER 4, PAGE 546, INGHAM COUNTY RECORDS. NO REFERENCE TO MONUMENT OR WITNESSES GIVEN.
10. CORNER REFERENCED IN LCRC, DATED 07/03/86, BY MARK W. WITALEC, LLS#30897, AND RECORDED IN LIBER 6, PAGE 289. "FOUND 9" DIA. CONC. MON. WITH IRON. WITNESSED BY:  
EAST 18.18' NAIL & TAG S.W. SIDE 18" MAPLE  
S.S.W. 49.68' N.E. COR. HOUSE #1425 FOUNDATION  
N.E. 43.36' P.K. (SET) S.E. SIDE U.P.  
S.E. 7.3' CENTERLINE "CITY SURVEY MONUMENT BOX"  
S. 24.57' TO FOUND "T" IRON
11. CORNER REFERENCED IN SURVEY, DATED 02/24/97, BY MARK W. WITALEC, LLS#30897, AND RECORDED IN LIBER 7, PG. 1022. SAME DESCRIPTION AND WITNESSES AS ABOVE. SURVEY SHOWS DISTANCE WEST TO C-3 OF 2631.68 FT.
12. CORNER REFERENCED IN SURVEY, DATED 03/05/97, BY MARK W. WITALEC, LLS#30897, AND RECORDED IN LIBER 7, PAGE 1061. SAME DESCRIPTION AND WITNESSES AS ABOVE. SURVEY SHOWS DISTANCE WEST TO C-3 OF 2631.68 FT.
13. CORNER REFERENCED IN SURVEY, DATED 06/30/97, BY MARK W. WITALEC, LLS#30897, AND RECORDED IN LIBER 7, PAGE 1194. SAME DESCRIPTION AND WITNESSES AS ABOVE. SURVEY SHOWS DISTANCE WEST TO C-3 OF 2631.68 FT.
14. NO OTHER REFERENCES FOUND.



2000-047320

Page: 2 of 2

11/07/2000 08:33A

LAND CORNER RECORDATION CERTIFICATE  
Filing Requirement of Act 74, Mich. P.A. 1970

For corners in

INGHAM

(County)

Located In:

Corner Code #

LANSING TOWNSHIP.

1. Public Land Survey

T 4N R 2W

E-1

2. Property Controlling  
in Section

S T R

3. Miscellaneous  
Property in Sec.

S T R

4. Lot No.

Recorded Plat

5. Private Claims

Paula Johnson  
INGHAM COUNTY  
REGISTER OF DEEDS  
POLARIS SURVEYING CO

RECORDED

L-10 P-49

CRNR 11.00

2000-047321

Register of Deeds Stamp & File Number

2000-047321  
Page: 1 of 2  
11/07/2000 08:33A

	A	B	C	D	E	F	G	H	I	J	K	L	M
1													
2	6		5		4			3		2			1
3													
4	7		8		9			10		11			12
5													
6	18		17		16			15		14			13
7													
8	19		20		21			22		23			24
9													
10	30		29		28			27		26			25
11													
12	31		32		33			34		35			36
13													

I, DAVID R. LOHR

, in a field survey on 5/24 & 7/17/2000,

do hereby certify that under requirements of P.A. 74, Michigan P.A. of 1970, the corner points mentioned in lines 1 and 2 above were in conformance with regulations and rules therefore as required in the current manual of survey instructions of the United States Department of the Interior, Bureau of Land Management or by a decree of a Court of Law and/or that the corner points mentioned in lines 3, 4 and 5 above were in conformance with the rules of the Michigan Board of Land Surveyors or by a Decree of a Court of Law; established, re-established, monumented, re-monumented, recovered, found as expressed below:

NOTE: Not more than 2 corners, all in the same town and range, may be recorded on this certificate.

A. Description of original monument and accessories and/or subsequent restoration:

1. CORNER SET BY MUSCROVE EVANS, U.S. DEPUTY SURVEYOR IN MARCH OF 1827. "INT. THE NORTH BOUNDARY 12 LKS (7.92') WEST OF THE POST AND SET A POST COR. TO SECS. 4 & 5" WITNESSED BY: TAM. 9", S 11° W, 110 LKS (72.60') DO 6", S 79° E, 89 LKS (58.74') GLO NOTES SHOW DISTANCES SOUTH OF 39.00 CH. (2574.00')

2. CORNER REFERENCED IN SURVEY OF LANSING TOWNSHIP IN 1909 BY R.J.ROBB, IN BOOK 5, PAGE 218, AS "CEMENT POST", 2.5 FT. LONG, 3" SQUARE AT TOP AND 4" SQUARE AT BOTTOM, WITNESSED BY: "ELM 24" S-W, 61' NO DISTANCES SHOWN ON SURVEY.
3. CORNER REFERENCED IN PLAT OF "HYLEWOOD SUBDIVISION", DATED JULY 24, 1929, BY A.N. BATEMAN, REGISTERED SURVEYOR, AND RECORDED IN LIBER 11 OF PLATS, PAGE 25, INGHAM COUNTY RECORDS. NO REFERENCE TO MONUMENT OR WITNESSES GIVEN. PLAT SHOWS CORNER AS BEING 33 FEET NORTH OF THE NORTHWEST CORNER OF LOT #87, AND NOTED AS "NW COR. SEC."

CONTINUED ON BACK

B. Description of corner evidence found and/or method applied in restoring or reestablishing corner:

SEARCHED AT APPARENT LOCATION OF CORNER AND FOUND 1/2" X 18" #28409 (ENGER) REBAR IN MONUMENT BOX AS INDICATED IN ITEM #5. 1/2" REBAR WAS SET OVER BENT 5/8" BAR 1.0 FT. DEEP (TOP BENT EAST UNDER MON. BOX EDGE) COULD NOT MOVE 5/8" BAR. REMOVED MON. BOX TO FIND 5/8" REBAR INSIDE 3/4" X 30" PIPE WHICH WAS ON SOUTH SIDE OF LARGE STONE 15" DEEP. STONE ABOUT 15" X 6" X 8" ON END. EXCAVATED 40" TO FINE SAND. NO OTHER EVIDENCE RECOVERED. ACCEPTED LOCATION OF FOUND 1/2" REBAR WITH PIPE & STONE AS CORNER RELATIVE TO PLAT OF HYLEWOOD ADJACENT TO THE SOUTHEAST. SET STANDARD INGHAM COUNTY REMON. BAR WITH 2-1/2" ALUMINUM REMON. CAP IN LOCATION OF FOUND 1/2" IRON.

C. Description of monument for corner and accessories established to perpetuate locating the position of the corner:

E-1, T4N, R2W, LANSING TOWNSHIP, INGHAM COUNTY. SET STANDARD INGHAM COUNTY REMON. BAR AND ALUMINUM REMON. CAP. STAMPED 30090 IN LOCATION OF FOUND 1/2" REBAR WITH PIPE & STONE IN MON. BOX. WITNESSED BY:  
FOUND IRON #25828, (BEAVER) S 03° W, 33.00'  
ED. N&T #13039 (PIERSON) W/S P. POLE, N 33° E, 33.60'  
SET N&T #30090, E/S TRI-14" BOX ELDER, N 22° E, 42.23'  
ED. N&T #13039 (PIERSON) W/S P. POLE, S 33° E, 27.60'  
ED. N/T #18998, W/S OF UTILITY POLE, SE 27.50'  
E-13 (DEWITT TWP) (CLINTON CO. REMON. PIPE) S 85° E, 7.47'

BEARINGS GIVEN ARE MAGNETIC.



Signed by David R. Lohr

Date OCTOBER 24, 2000

Surveyor's Michigan License No. 30090

FORM APPROVED BY MICHIGAN STATE BOARD OF LAND SURVEYORS, JAN. 28, 1971  
REVISED MAY 14, 1975  
REVISED JAN., 1982  
REVISED OCT., 1986  
ADAPTED FOR WORD PROCESSING JAN., 1989

P.A. 345 INGHAM COUNTY  
PEER APPROVED 9/7/2000 M

E-1: LANSING TOWNSHIP, PART A CONTINUED:

4. CORNER REFERENCED IN LCRC, DATED 11/05/79, BY RONNIE M. LESTER, RLS#18998, AND RECORDED IN LIBER 6, PAGE 17. PART B STATES: DURING INVESTIGATION FOUND 1/2" BAR INSIDE A 3/4" OCTAGONAL PIPE 0.60' BELOW ROAD SURFACE, +\ - 7.5' SOUTH OF THE CENTERLINE OF SHERIDAN ROAD AND +\ - 667.5' WEST OF THE CENTERLINE OF NORTHDALE ROAD SOUTH. ACCEPTED 1/2" BAR FOR CORNER. BAR IN ACCORD WITH MONUMENTATION FOUND IN PLAT OF HYLEWOOD SUBDIVISION. RESEARCH CONDUCTED BY INGHAM COUNTY SURVEY AND REMONUMENTATION PROJECT STAFF.

PART C STATES: NE CORNER, SECTION 5, T4N, R2W, FOUND 1/2" BAR IN LOCATION DESCRIBED ABOVE:

WITNESSED BY: SOUTHEAST CORNER OF FOUNDATION, HOUSE #642, NW, 126.30'  
NAIL & TAG, #18998, W/S 7" TRIPLE MAPLE, NNE, 41.52'  
NAIL & TAG, #18998, W/S 14" POWER POLE, SE, 27.55'  
NAIL & TAG, #18998, W/S 20" COTTON WOOD, SSW, 40.20'  
1/2" PIPE, E-13, DEWITT TWP. EAST, 7.47'

5. CORNER REFERENCED IN LCRC, DATED 11/22/94, BY MARK W. WITALEC, LS#30897, AND RECORDED IN LIBER 8, PAGE 420. "FOUND 1/2" SMOOTH ROD WITH SURVEYOR'S CAP #28409 (RON ENGER) IN SHERIDAN ROAD PAVEMENT, WITNESSES REMAINING FROM L.6, P.17, INGHAM COUNTY L.C.R.C.'S CHECK WELL WITH THIS LOCATION. SET A MONUMENT BOX OVER THE FOUND ROD WITH IDENTIFICATION CAP #28409."

WITNESSED BY: SOUTH 33.00' TO FOUND IRON #25828  
NW 126.22' TO SE CORNER OF HOUSE FOUNDATION (HOUSE #642)  
NE 33.62' TO FORM NAIL AND TAG IN WEST SIDE OF UTILITY POLE  
SE 27.52' TO NAIL & TAG #18998 IN WEST SIDE OF UTILITY POLE  
SSW 40.15' TO NAIL AND TAG #18998 IN WEST SIDE OF 28" COTTONWOOD TREE  
SOUTH 2.5' +/- TO THE SOUTH EDGE OF 24' WIDE ASPHALT PAVEMENT (SHERIDAN ROAD)

6. NO OTHER REFERENCES FOUND.



2000-047321

Page: 2 of 2

11/07/2000 08:33A

LAND CORNER RECORDATION CERTIFICATE  
Filing Requirement of Act 74, Mich. P.A. 1970

For corners in

INGHAM

(County)

Located In:

Corner Code #

LANSING TOWNSHIP.

1. Public Land Survey

T 4N R 2W

E-2

2. Property Controlling  
in Section

S T R

3. Miscellaneous  
Property in Sec.

S T R

4. Lot No.

Recorded Plat

5. Private Claims

Paula Johnson  
INGHAM COUNTY  
REGISTER OF DEEDS  
POLARIS SURVEYING CO

RECORDED

L-10 P-51

CRNR 11.00

2000-047322

Register of Deeds Stamp & File Number

2000-047322  
Page: 1 of 2  
11/07/2000 08:33A

I, DAVID R. LOHR, in a field survey on 5/24 & 6/15 2000, do hereby certify that under requirements of P.A. 74, Michigan P.A. of 1970, the corner points mentioned in lines 1 and 2 above were in conformance with regulations and rules therefore as required in the current manual of survey instructions of the United States Department of the Interior, Bureau of Land Management or by a decree of a Court of Law and/or that the corner points mentioned in lines 3, 4 and 5 above were in conformance with the rules of the Michigan Board of Land Surveyors or by a Decree of a Court of Law; established, re-established, monumented, re-monumented, recovered, found as expressed below:

NOTE: Not more than 2 corners, all in the same town and range, may be recorded on this certificate.

A. Description of original monument and accessories and/or subsequent restoration:

1. CORNER SET BY MUSCROVE EVANS, U.S. DEPUTY SURVEYOR IN MARCH OF 1827. "MARKED THE 1/4 SEC. CORNER ON AN ELM 6" DIA." NO WITNESSES:

GLO NOTES SHOW DISTANCES NORTH OF 39.00 CH. (2574.00') AND SOUTH OF 40 CH. (2640).

2. CORNER REFERENCED IN SURVEY BY E.A. CALKINS, DEP. COUNTY SURVEYOR, DATED JULY 5, 1900, AND RECORDED IN BOOK 15, PAGE 145, MISC. SURVEY NOTES. NOTES STATE "FOUND OLD PIPE". WITNESSED BY:

CHERRY 10", N 3-1/2° E, 143 LKS (94.38')

3. CORNER REFERENCED IN SURVEY BY E.A. CALKINS, DEP. COUNTY SURVEYOR, DATED JULY 5, 1900, AND RECORDED IN BOOK 1, PAGE 11, COUNTY SURVEYOR RECORDS. "GAS PIPE, 1-1/4" f.w. BEARS CHERRY 10" N 3-1/2° E, 143LKS (94.38') OLD ELM STILL REMAINS AS STUMP ALMOST ENTIRELY DECAYED". SURVEY SHOWS DISTANCE EAST OF 39.91 CH. (2634.06')

4. CORNER REFERENCED IN SURVEY BY E.A. CALKINS, DEP. COUNTY SURVEYOR, DATED SEPT. 20, 1902, AND RECORDED IN BOOK 1, PAGE 34, COUNTY SURVEYOR RECORDS. "OLD POST OF RESURVEY". SURVEY SHOWS DISTANCE NORTH OF 20.06 CH. (1323.96') TO 1/8 CORNER.

CONTINUED ON BACK

B. Description of corner evidence found and/or method applied in restoring or reestablishing corner: SEARCHED AT APPARENT LOCATION OF CORNER AND FOUND 1-1/4" SQUARE BAR AS INDICATED IN LCRC, LIBER 6, PG.14 (ITEM #9). MEASURED NORTH 325 FT. FROM SOUTHWEST CORNER OF LOT 25 TO LOCATE CORNER POSITION. LIMITED HAND EXCAVATION PERFORMED AT THIS LOCATION DUE TO HIGH WATER TABLE. (DURING 5/24 SITE VISIT, THIS CORNER WAS UNDER 1.5 FT. OF WATER). HAND PROBED UNDER WATER AROUND IRON BAR, AND COULD FEEL IT SURROUNDED BY BRICK, BROKEN CLAY TILE AND BROKEN GLASS. NO EVIDENCE FOUND OF ANY OF THE RECORDED SUBDIVISION MONUMENTS (1" GAS PIPES). FOUND HOTH'S 1980 WITNESS MAPLE TREE TO SOUTHEAST, COULD NOT MEASURE TO BUILDING CORNER TO NORTHWEST DUE TO HEAVY UNDERBRUSH. ACCEPTED 1-1/4" SQUARE IRON BAR AS CORNER, COULD NOT SET STANDARD REMON. ALUMINUM CAP ON TOP OF IRON BAR, SET STANDARD 3/4" REMON. BAR AND PA 345 CAP STAMPED 30090 ALONG EAST SIDE OF IRON BAR. SET SECTION OF 10" BLACK PLASTIC DRAIN TILE AROUND CORNER AS IT WAS BURIED ABOUT 12"

C. Description of monument for corner and accessories established to perpetuate locating the position of the corner: E-2, T4N, R2W, LANSING TOWNSHIP, INGHAM COUNTY. FOUND 1 1/4" SQUARE BAR. WITNESSED BY:

SET N&T #30090, N/S TRI. 12" MAPLE, S 70° E, 23.60'

SET N&T #30090, NE/S 8" POPLAR, N 38° W, 5.78'

SET N&T #30090, E/S 12" POPLAR, N 20° W, 10.23'

SET N&T #30090, W/S 8" POPLAR, S 32° W, 10.00'

BEARINGS GIVEN ARE MAGNETIC.



Signed by

David R. Lohr

Date OCTOBER 24, 2000

Surveyor's Michigan License No. 30090

FORM APPROVED BY MICHIGAN STATE BOARD OF LAND SURVEYORS, JAN. 28, 1971  
REVISED MAY 14, 1976  
REVISED JAN., 1983  
REVISED OCT, 1995  
ADAPTED FOR WORD PROCESSING JAN, 1999

P.A. 345 INGHAM COUNTY  
PEER APPROVED 6/20/2000 RL



E-2: LANSING TOWNSHIP, PART A CONTINUED:

5. CORNER REFERENCED IN PLAT OF "SCOTT SUBDIVISION ON SECTIONS 4 AND 5", BY H.D. BARTHOLEMEW, SURVEYOR, DATED SEPT. 16, 1903, AND RECORDED IN LIBER 3 OF PLATS, PAGE 7, INGHAM COUNTY RECORDS. "1/4 POST" MONUMENT NOTED AS 1" X 20" GAS PIPE, NO WITNESSES GIVEN.
6. CORNER REFERENCED IN SURVEY OF LANSING TOWNSHIP IN 1909 BY R.J. ROBB, IN BOOK 5, PAGE 218, AS "CEMENT POST", 2.5 FT. LONG, 3" SQUARE AT TOP AND 4" SQUARE AT BOTTOM, WITNESSED BY: "CHERRY NORTH 43.5' AND MAPLE 10" S-W, 54.3'. NO DISTANCES SHOWN ON SURVEY.
7. CORNER REFERENCED IN PLAT OF "MAYFIELD FARMS", DATED JULY 6, 1920, BY A.N. BATEMAN, REGISTERED SURVEYOR, AND RECORDED IN LIBER 6 OF PLATS, PAGE 49, INGHAM COUNTY RECORDS. MONUMENT NOTED AS 1" X 24" GAS PIPE, NO WITNESSES GIVEN. PLAT SHOWS CORNER AS BEING SOUTHWEST CORNER OF LOT #1, AND NOTED AS "1/4 POST."
8. CORNER REFERENCED IN "ASSESSOR'S PLAT NO. 34", DATED APRIL 27, 1929, BY A.N. BATEMAN, REGISTERED SURVEYOR, AND RECORDED IN LIBER 11 OF PLATS, PAGE 15, INGHAM COUNTY RECORDS. MONUMENT NOTED AS 1" X 15" GAS PIPE, NO WITNESSES GIVEN. PLAT SHOWS CORNER AS BEING NORTHWEST CORNER OF LOT #25, AND NOTED AS "W 1/4 POST, SEC. 4".
9. CORNER REFERENCED IN UNRECORDED CERTIFICATE OF SURVEY BY RICHARD W. STEADMAN, RLS # 11370, DATED 4/19/66. CORNER SHOWN AS "W 1/4 COR. - SEC. 4, FOUND 1" SQUARE IRON." CORNER USED AS NORTHWEST CORNER OF LOT 25, ASSESSOR'S PLAT NO. 34. NO WITNESSES GIVEN.
10. CORNER REFERENCED IN LCRC, DATED 11/22/80, BY DOUGLAS W. HOTH, LS#7966, AND RECORDED IN LIBER 6, PAGE 14. "FOUND 1" SQUARE IRON 10" DEEP UNDER FENCE POST. FROM DISTANCES GIVEN US BY STEADMAN & PIERSON INC. 1" SQUARE IRON 325' NORTH SW CORNER OF LOT #25 (ASSESSORS PLAT #34) 1966 SURVEY. HOUSE #720 FILLEY STREET. WITNESSES BY:

N-05-W	10.47'	5" POPLAR
S-65-E	23.90'	17" MAPLE
S-45-W	21.48'	7" POPLAR
N-55-W	10.96'	5" POPLAR
N-35-W	129.23'	SE COR.CONC. BLK BLDG.
11. CORNER REFERENCED IN MONUMENTED CORNER REPORT DATED JAN. 22, 1980, BY G. VANDERMOLLEN. "FOUND VERY OLD 1-1/4" SQ. BAR" WITNESSED BY:

FD. MSHD N&T IN EAST SIDE 6" POPLAR N 20° W, 10.46'	(GONE)
FD. MSHD N&T IN NORTH SIDE 6" TRIPLE MAPLE, S 85° E, 23.89'	(FD. TREE)
FD. MSHD N&T IN NW SIDE 6" POPLAR S 35° W, 21.46'	(GONE)
FD. MSHD N&T IN NORTH SIDE 6" POPLAR, N 85° W, 10.85'	(GONE)
12. NO OTHER REFERENCES FOUND.



2000-047322  
Page: 2 of 2  
11/07/2000 08:33A

LAND CORNER RECORDATION CERTIFICATE  
Filing Requirement of Act 74, Mich. P.A. 1970

For corners in

INGHAM

(County)

Located In:

Corner Code #

LANSING TOWNSHIP.

1. Public Land Survey

T 4N R 2W

E-3

Paula Johnson

INGHAM COUNTY

REGISTER OF DEEDS

POLARIS SURVEYING CO

RECORDED

L-10 P-53

CRNR 11.00

2000-047323

2. Property Controlling  
in Section

S T R

3. Miscellaneous

S T R

Property in Sec.

S T R

4. Lot No.

Recorded Plat

5. Private Claims



2000-047323

Page: 1 of 2

11/07/2000 08:33A

Register of Deeds Stamp & File Number

	A	B	C	D	E	F	G	H	I	J	K	L	M
1													
2	6	5	4	3	2	1							
3													
4	7	8	9	10	11	12							
5													
6	18	17	16	15	14	13							
7													
8	19	20	21	22	23	24							
9													
10	30	29	28	27	26	25							
11													
12	31	32	33	34	35	36							
13													

I, DAVID R. LOHR

, in a field survey on MAY 24, 2000,  
do hereby certify that under requirements of P.A. 74, Michigan P.A. of 1970, the corner points mentioned  
in lines 1 and 2 above were in conformance with regulations and rules therefore as required in the  
current manual of survey instructions of the United States Department of the Interior, Bureau of Land  
Management or by a decree of a Court of Law and/or that the corner points mentioned in lines 3, 4 and 5  
above were in conformance with the rules of the Michigan Board of Land Surveyors or by a Decree of a  
Court of Law; established, re-established, monumented, re-monumented, recovered, found as  
expressed below:

NOTE: Not more than 2 corners, all in the same town and range, may be recorded  
on this certificate.

A. Description of original monument and accessories and/or subsequent restoration:  
1. CORNER SET BY MUSCROVE EVANS, U.S. DEPUTY SURVEYOR IN MARCH OF  
1827. "SET POST COR. TO SECS. 4, 5, 8 & 9" WITNESSED BY:

BEECH 10", N 23° E, 24 LKS. (15.84')

DO 12", S 27° W, 31 LKS. (20.46')

GLO NOTES SHOW DISTANCES NORTH AND SOUTH OF 40 CH. (2640), EAST OF 39.95 CH. (2636.70') AND WEST OF  
39.90 CH. (2633.40')

2. NO CORNER REFERENCES FOUND IN COUNTY SURVEYOR RECORDS.

3. CORNER REFERENCED IN SURVEY OF LANSING TOWNSHIP IN 1909 BY R.J.ROBB, IN BOOK 5, PAGE 218, AS "CEMENT  
POST", 2.5 FT. LONG, 3" SQUARE AT TOP AND 4" SQUARE AT BOTTOM, WITNESSED BY: "ELM 12", N-W 70'  
MAPLE, S-W, 88'. NO DISTANCES SHOWN ON SURVEY.

4. CORNER REFERENCED IN PLAT OF "CULVER'S SUBDIVISION", DATED DEC. 20, 1920, BY A.N. BATEMAN,  
REGISTERED SURVEYOR, AND RECORDED IN LIBER 7 OF PLATS, PAGE 7, INGHAM COUNTY RECORDS. NO REFERENCE  
TO MONUMENT OR WITNESSES GIVEN. PLAT SHOWS CORNER AS BEING ON LOT #18, AND NOTED AS "SEC. COR."

CONTINUED ON BACK

B. Description of corner evidence found and/or method applied in restoring or reestablishing corner:  
SEARCHED AT APPARENT LOCATION OF CORNER AND FOUND 5/8" REFERENCE PIPE AS INDICATED IN ITEM #7.  
NO EXCAVATION PERFORMED AT THIS LOCATION. ACCEPTED LOCATION OF FOUND 5/8" PIPE AS REFERENCE  
MONUMENT. SET STANDARD INGHAM COUNTY REMON. BAR WITH 2-1/2" ALUMINUM REMON. CAP IN ITS LOCATION.  
SKETCH ATTACHED (SEE ITEM 6-A) SHOWS SURVEYOR FOUTY'S RELATIVE BEARINGS AND DISTANCES FROM NORTH  
LINE OF SADIE COURT TO THE CORNER POSITION. THE NORTH LINE BEARING S88°10'34" E, 332.86' AND THE  
REFERENCE LINE BEARING N01°25'26" E, 79.43' TO THE ACTUAL CORNER POSITION.

C. Description of monument for corner and accessories established to perpetuate locating the position of the corner:  
E-3, T4N, R2W, LANSING TOWNSHIP, INGHAM COUNTY. REFERENCE MONUMENT. SET STANDARD INGHAM COUNTY  
REMON. BAR AND ALUMINUM REMON. CAP. STAMPED 30090. WITNESSED BY:

FD. N&T #18989, W/S 10" PINE, N 21° E, 19.82'

NORTHWEST CORNER GARAGE FND., N 44° E, 53.70'

SOUTHWEST CORNER GARAGE FND., N 63° E, 39.19'

C/L 2" FENCE ANCHOR POST, S 85° E, 33.57'

NORTHWEST CORNER GAR. HSE. #723, S 08° W, 79.50'

SET N&T #30090, S/S 14" PINE, N 79° W, 15.20'

SET N&T #30090, W/S 12" PINE, N 24° W, 34.81'

BEARINGS GIVEN ARE MAGNETIC.



Signed by David R. Lohr

Date OCTOBER 24, 2000

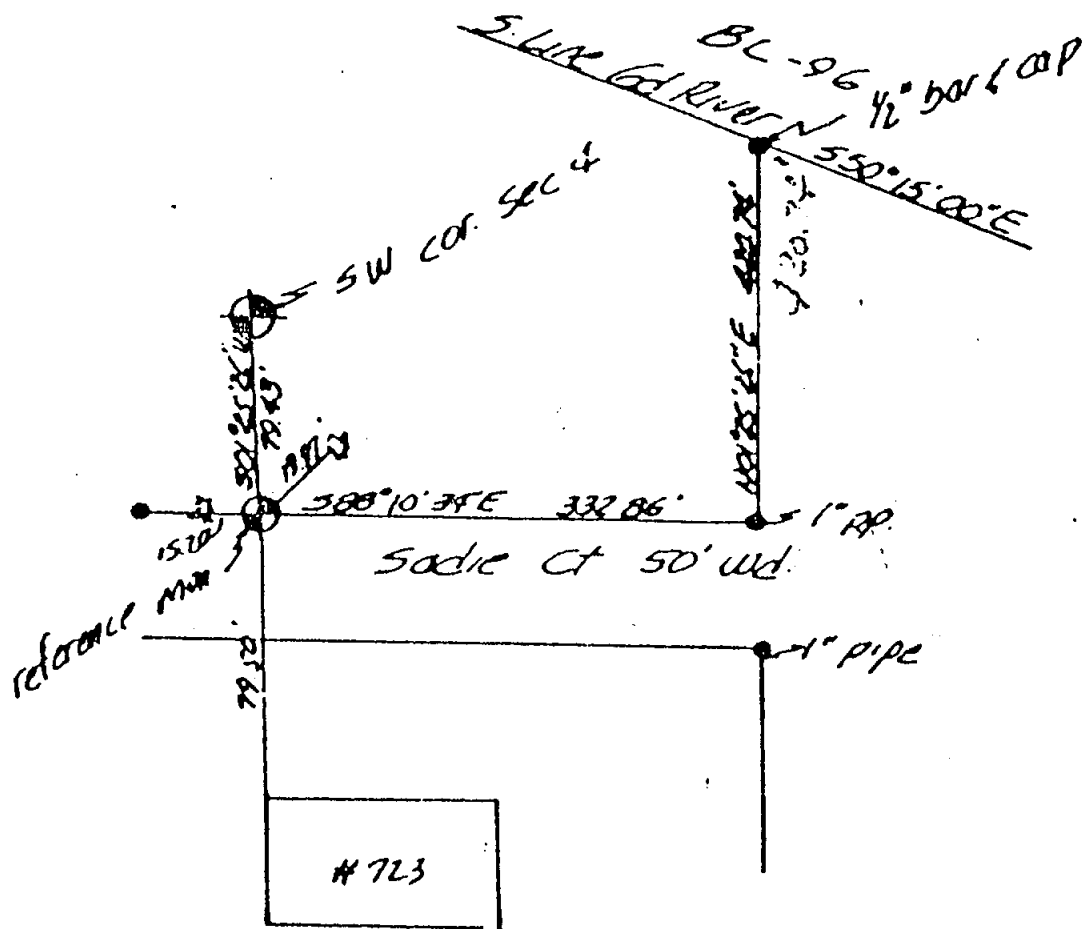
Surveyor's Michigan License No. 30090

FORM APPROVED BY MICHIGAN STATE BOARD OF LAND SURVEYORS, JAN. 28, 1971  
REVISED MAY 14, 1976  
REVISED JAN., 1983  
REVISED OCT, 1986  
ADAPTED FOR WORD PROCESSING JAN, 1999

P.A. 345 INGHAM COUNTY  
PEER APPROVED 6/20/2000 m

5. CORNER REFERENCED IN SURVEY BY C.M. CADE, CITY OF LANSING ENGINEER, NOT DATED (CIRCA 1921)  
"THE POST WAS POINTED OUT TO C.M. CADE IN 1921 BY A.N. BATEMAN WHO HAD USED SAME ON SURVEY  
OF CULVER'S ADDITION. ONLY STUMPS OF TREES REMAIN. SET A STANDARD MONUMENT, 8" BELOW SURFACE  
TO COVER." WITNESSED BY: S.W. BLOCK WALL, N 64.30 E, 68.35'

6. CORNER REFERENCED IN LCRC, DATED 11/12/83, BY MARVIN F. FOUTY, RLS#18989, AND RECORDED IN  
LIBER 3, PAGE 79. "A CEMENT POST 2.5' LONG, 3'SQUARE AT THE TOP AND 4" SQUARE AT THE BOTTOM  
WAS SET IN 1909 BY COUNTY SURVEYOR ROBB, FROM INGHAM COUNTY RECORDS. THE CORNER WAS CALLED  
FOR ON CULVER'S SUBDIVISION OF LOT 16 AND PART OF LOT 17, TOWNSEND'S SUBDIVISION ON SECTIONS  
4,5,8 AND 9, T4N, R2W, CITY OF LANSING AND LANSING TOWNSHIP, INGHAM COUNTY, MICH. AS RECORDED  
IN LIBER 7 OF PLATS, PAGE 7. THE CORNER WAS WITNESSED BY DIMENSIONS TO THE CORNERS OF LOT 18  
OF SAID PLAT. THE CORNER POSITION WAS IS NOW OCCUPIED BY A GARAGE CONSTRUCTED IN 1969. A  
REFERENCE MONUMENT WAS SET AND WITNESSED AS NOTED BELOW. 1/2" BAR WITH IDENT. CAP SET AS  
REFERENCE MONUMENT. WITNESSES TO REFERENCE MONUMENT WHICH IS S01 25' 26" W 79.43' FROM  
INACCESSABLE SECTION CORNER. (BEARING RELATIVE AND REFERENCED TO HIGHWAY BL-96 WHICH IS  
RECORDED TO BEAR N 50° 15' 00" W)." WITNESSED BY:  
NAIL & TAG, SOUTH SIDE 8" PINE, W, 15.20' (FOUND)  
NAIL & TAG, WEST SIDE 8" PINE, NE, 19.97' (FOUND)  
NW CORNER HOUSE #723, SOUTH, 79.50' (FOUND)



8. NO OTHER REFERENCES FOUND.



2000-047323  
Page: 2 of 2  
11/07/2000 08:33A