

LAND CORNER RECORDATION CERTIFICATE
Filing Requirement of Act 74, Mich. P.A. 1970

For corners in

INGHAM
(County)
LEROY TOWNSHIP

Located in:

Corner Code #

1. Public Land Survey

T 3N R 2E

C 01

2. Property Controlling
in Section

S

T R

3. Miscellaneous
Property in Sec.

S

T R

4. Lot No. , Recorded Plat

5. Private Claims

B: 13 P: 154 10/23/2007 10:31 AM Pages: 2
2007-045633 LAND CORNERS Receipt #33521
Paula Johnson, Ingham County, Michigan



	A	B	C	D	E	F	G	H	I	J	K	L	M
1													
2	6	5	4	3	2	1							
3													
4	7	8	9	10	11	12							
5													
6	18	17	16	15	14	13							
7													
8	19	20	21	22	23	24							
9													
10	30	29	28	27	26	25							
11													
12	31	32	33	34	35	36							
13													

I, DAVID L. CLIFFORD, in a field survey on AUGUST 15, 2007 do hereby state that under requirements of P.A. 74, Michigan P.A. of 1970, the corner points mentioned in lines 1 and 2 above were in conformance with regulations and rules therefore as required in the current manual of survey instructions of the United States Department of the Interior, Bureau of Land Management or by a decree of a Court of Law and /or that the corner points mentioned in lines 3, 4 and 5 above were in conformance with the rules of the Michigan Board of Land Surveyors or by a Decree of a Court of Law; established, re-established, monumented, recovered, found as expressed below:

NOTE: Not more than 2 corners, all in the same town and range, may be recorded on this certificate.

A. Description of original monument and accessories and/or subsequent restoration:

1. JOSEPH WAMPLER, DEPUTY SURVEYOR, SET POST IN ORIGINAL GOVERNMENT SURVEY IN 1825: SET POST COR TO 5 & 6 FW: W OAK 4, S39E, 7; ASH 10, S41W, 37

2. FRED WHITE, RLS 13034, RECORDED THE PLAT OF MOHRLAND IN LIBER 28 OF PLATS PAGES 45 & 46 IN APRIL 1970. PLAT SHOWS THE WEST LINE OF PLAT TO BE WEST SECTION LINE AND REFERS TO THE CORNER AS AN APPROXIMATE LOCATION ONLY.

3. GARY BOSS, RLS 17022, USED CORNER IN ACT 132 SURVEYS RECORDED IN LIBER 4 PAGE 817 ON MARCH 14, 1984 AND IN LIBER 5 PAGE 487 ON JULY 19, 1988: "T" IRON POST FOUND (1' OUT OF GROUND); S00°26'19"E, 156.95, CONC. MON; S60°W, 13.13, NAIL S/S 10" MAPLE; N80°E, 13.80, NAIL N/S 16" MAPLE; NORTH, 12.80, NAIL E/S 3" ASH; NORTH 60', SOUTH EDGE RED CEDAR RIVER

4. LARRY BRYAN, LLS 25832, USED CORNER IN ACT 132 SURVEYS RECORDED IN LIBER 4 PAGE 1229 ON MAY 21, 1986 AND IN LIBER 6 PAGES 51, 52, & 58 ON FEBRUARY 20, 1990: FOUND "T" FENCE POST PER SURVEY BY GARY BOSS DATED OCTOBER 11, 1983; FOUND NAIL AND TAG IN SOUTH SIDE 3" ASH, NORTH, 12.88'; FOUND NAIL AND TAG IN NORTH SIDE 16" MAPLE, N80°E, 13.92'; FOUND CONCRETE MONUMENT, SOUTH, 156.66'

CONTINUED ON REVERSE

P.A. 345 INGHAM COUNTY
PEER APPROVED 8/21/2007 *m*

B. Description of corner evidence found and/or method applied in restoring or reestablishing corner:

FOUND "T" IRON FENCE POST AS RECORDED IN LIBER 7 PAGE 59. THIS FENCE POST IS ON A FENCE LINE FROM SOUTH AND ON LINE WITH PLAT MONUMENTS TO SOUTH FROM MOHRLAND PLAT. SEARCHED EXTENSIVELY FOR ANY OTHER EVIDENCE OF CORNER LOCATION. DID NOT FIND ANYTHING. ACCEPTED FOUND MONUMENTATION AS BEST AVAILABLE EVIDENCE OF CORNER LOCATION. SET STANDARD BAR & CAP 0.50' NORTH ON STANDARD LINE. MEASURED SOUTH 1768.09' TO C-2. MEASURED EAST 2676.66' TO D-1. MEASURED WEST 2649.81' TO B-1.

C. Description of monument for corner and accessories established to perpetuate locating the position of the corner:

3/4" X 24" BAR & INGHAM COUNTY PA345 ALUMINUM CAP STAMPED 25837

NAIL & KEBS (KEYES ENGINEERING BRYAN SURVEYS) TAG NW SIDE TWIN 8" ELM

NAIL & KEBS TAG WEST SIDE 24" ELM

NAIL & KEBS TAG SE SIDE 28" MAPLE

2 1/2" MAGNETIC NAIL AND 1 1/2" ALUMINUM TAG STAMPED PA 345 INGHAM WITNESS WEST SIDE 8" MAPLE

3/4" X 24" BAR & INGHAM COUNTY PA345 ALUMINUM CAP STAMPED 30090 (C-13 T4N R2E)

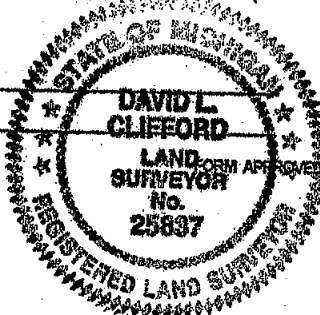
"T" TYPE FENCE POST (AMENDED LOCATION C-1)

N55°E	35.93'
S40°E	29.70'
S66°W	13.24'
N46°W	16.10'
S88°E	73.72'
SOUTH	0.50'

Signed by David Clifford

Surveyor's Michigan License No. 25837

Date AUGUST 16, 2007



FORM APPROVED BY MICHIGAN STATE BOARD OF PROFESSIONAL SURVEYORS, JAN. 28, 1971
REVISED MAY 14, 1975
REVISED JAN. 1983
REVISED OCT., 1995

C-1 T3N, R2E
LEROY TOWNSHIP
CONTINUED FROM FRONT OF FORM

5. LARRY BRYAN, LLS 25832, RECORDED CORNER UNDER ACT 74 IN LIBER 7 PAGE 59 ON JANUARY 27, 1989: "T" FENCE POST PER SURVEY BY GARY BOSS DATED OCTOBER 11, 1983; NORTHEAST CORNER SECTION 6, T3N, R2E. FOUND NAIL AND TAG SOUTH SIDE 10" MAPLE, SOUTH 60° WEST, 13.18'; FOUND NAIL AND TAG EAST SIDE 3" ASH, NORTH, 12.88'; FOUND NAIL AND TAG NORTH SIDE 16" MAPLE, NORTH 80° EAST, 13.92'; FOUND CONCRETE MONUMENT, SOUTH, 156.68'
6. LARRY BRYAN, LLS 25832, RECORDED THE PLAT OF CHULA VISTA IN LIBER 45 OF PLATS PAGES 20, 21 & 22 IN AUGUST 1989. PLAT SHOWS THE CORNER WITH NO MENTION OF MONUMENT OR WITNESSES
7. MARK VANRAEMDONCK, PS 24622, RECORDED C-13, T4N, R2E UNDER ACT 74 IN LIBER 10 PAGE 107 ON JULY 2, 2001: LOCATED THE NORTHWEST CORNER OF SECTION 5, T3N-R2E. IT IS MONUMENTED BY A STEEL "T" POST. THE PLAT OF "CHULA VISTA" RECORDED IN LIBER 45, PAGE 20 IS BOUNDED ON THE NORTH BY THE NORTH LINE OF SECTION 5, T3N-R2E. I LOCATED A CONCRETE MONUMENT ON THE NORTH LINE OF SECTION 5 809.99 FEET EAST OF THE NORTHWEST CORNER OF SECTION 5, T3N-R2E. I RE-ESTABLISHED THE CORNER POSITION ON THE LINE BETWEEN THE STEEL "T" POST AND THE CONCRETE MONUMENT AT THE GLO DISTANCE OF 80.52 FEET EAST OF THE STEEL "T" POST. I ACCEPTED THIS LOCATION AS THE CAREFUL AND FAITHFUL RE-ESTABLISHMENT OF THE ORIGINAL CORNER POSITION BASED ON THE BEST AVAILABLE EVIDENCE. DROVE A ½" DIAMETER REROD, 18" LONG, WITH A YELLOW PLASTIC CAP STAMPED "LANDMARK PS 24622" AT THE POSITION DESCRIBED IN SECTION B ABOVE. THE REROD IS WITNESSED BY THE FOLLOWING ACCESSORIES: S70°W, 63.05', SET NAIL & TAG IN SE FACE OF 20" ASH; NORTH, 54.00', FOUND NAIL & TAG #25832 IN E FACE 20" MAPLE; N60°E, 58.35', FOUND NAIL & TAG #25832 IN SE FACE TRIPLE MAPLE; WEST, 80.52', "T" POST AT NE CORNER SECTION 6, T3N-R2E; EAST, 729.37', CONC. MONUMENT AT NW CORNER LOT 11 OF THE PLAT OF "CHULA VISTA". ALSO USED CORNER IN AN ACT 132 SURVEY RECORDED IN LIBER 8 PAGE 885 ON JULY 2, 2001 WITH THE SAME MONUMENT AND WITNESSES.

LAND CORNER RECORDATION CERTIFICATE
Filing Requirement of Act 74, Mich. P.A. 1970

For corners in

INGHAM

(County)

LEROY TOWNSHIP

Located In:

Corner Code #

1. Public Land Survey

T 3N R 2E

C 02

2. Property Controlling
in Section

S
S

T
T

3. Miscellaneous
Property in Sec.

S
S

T
T

4. Lot No. , Recorded Plat

5. Private Claims

B: 13 P: 153 10/23/2007 10:31 AM
2007-045632 LAND CORNERS Receipt #33521
Paula Johnson, Ingham County, Michigan

Pages: 2



	A	B	C	D	E	F	G	H	I	J	K	L	M
1													
2		6	5										
3													
4		7	8	9	10	11	12						
5													
6		18	17	16	15	14	13						
7													
8		19	20	21	22	23	24						
9													
10		30	29	28	27	26	25						
11													
12		31	32	33	34	35	36						
13													

I, DAVID L. CLIFFORD, in a field survey on AUGUST 15, 2007 do hereby state that under requirements of P.A. 74, Michigan P.A. of 1970, the corner points mentioned in lines 1 and 2 above were in conformance with regulations and rules therefore as required in the current manual of survey instructions of the United States Department of the Interior, Bureau of Land Management or by a decree of a Court of Law and /or that the corner points mentioned in lines 3, 4 and 5 above were in conformance with the rules of the Michigan Board of Land Surveyors or by a Decree of a Court of Law; established, re-established, monumented, recovered, found as expressed below:

NOTE: Not more than 2 corners, all in the same town and range, may be recorded on this certificate.

A. Description of original monument and accessories and/or subsequent restoration:

1. JOSEPH WAMPLER, DEPUTY SURVEYOR, SET POST IN ORIGINAL GOVERNMENT SURVEY IN 1825: SET 1/4 POST FW IRONWOOD 4, S47 1/2W, 3; IRONWOOD 6, N54 1/4E, 28 MEASURED 40 CHAINS (2640') SOUTH TO C3. MEASURED 26.50 CHAINS (1749') NORTH TO C-1

2. A. JACKSON, COUNTY SURVEYOR, USED CORNER IN A SURVEY RECORDED IN COUNTY SURVEYOR'S NOTES VOLUME 2 PAGE 155 ON AUGUST 26, 1858: LYNN 20, S42W, 49; R OAK 9, S35E, 33

3. LARRY BRYAN, RLS 25832, RECORDED CORNER UNDER ACT 74 IN LIBER 7 PAGE 122 ON MAY 12, 1989 SET 1/2" BAR & CAP #25832 ON LINE WITH THE SOUTHWEST CORNER OF SECTION 5 (C-3) AND THE NORTHWEST CORNER OF SECTION 5 (C-1) AT THE PRORATED GLO DISTANCES. CORNER FALLS IN A HAYFIELD EAST OF BARNS. SET 1/2" BAR & CAP #25832, SOUTHEAST CORNER OF WOOD BASE OF METAL POLE BARN, S45°W, 116.20'; SOUTHEAST CORNER OF CONCRETE BLOCK BARN, N70°W, 71.78'; NORTHEAST CORNER OF CONCRETE BLOCK BARN, N30°W, 98.34'. BRYAN ALSO USED CORNER IN ACT 132 SURVEYS RECORDED IN LIBER 6 PAGES 30-32 IN FEB. 1990 WITH SAME MONUMENT AND WITNESSES.

4. MAURICE MAHIEU, PS 28414, USED CORNER IN AN ACT 132 SURVEY RECORDED IN LIBER 9 PAGE 69 ON JULY 1, 2004, REVISED IN JULY, 2005 AND RE-RECORDED IN LIBER 9 PAGE 233 ON DECEMBER 10, 2005, USING BRYAN'S MONUMENT & WITNESSES AS LISTED IN ITEM 3

CONTINUED ON REVERSE

P.A. 345 INGHAM COUNTY

PEER APPROVED 8/21/2007 ML

B. Description of corner evidence found and/or method applied in restoring or reestablishing corner:

SEARCHED AT LOCATION AS DESCRIBED IN LIBER 7 PAGE 164 BY L. BRYAN AND DID NOT FIND BAR & CAP (CORNER FALLS IN WHEAT FIELD). ACCEPTED BRYAN POSITION AS CORNER AND SET WITNESS CORNER 262.00' NORTH ON SECTION LINE IN SOUTH EDGE OF GRAVEL GRAND RIVER AVENUE. MEASURED NORTH 1768.09' TO C-1. MEASURED SOUTH 2668.08' TO C-3. (MEASUREMENTS ARE TO ACTUAL CORNER POSITION)

C. Description of monument for corner and accessories established to perpetuate locating the position of the corner:

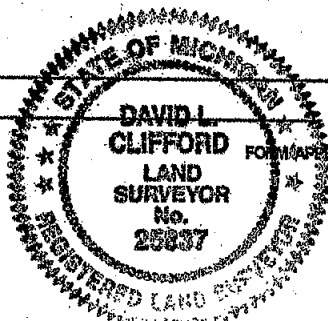
3/4" X 24" STEEL BAR & INGHAM COUNTY PA345 ALUMINUM CAP STAMPED W.C. 25837 (WITNESS CORNER 262.00' NORTH OF CORNER ON SECTION LINE IN SOUTH EDGE GRAVEL GRAND RIVER AVENUE)
NAIL & TAG INGHAM COUNTY SOUTH SIDE UTILITY POLE S48°E 65.48'
NE FACE OF 8" WELL CASING S72°W 72.86'
CENTERLINE BIT GRAND RIVER (M-43) NORTH 25.0'
NAIL & TAG INGHAM COUNTY SE SIDE UTILITY POLE N43°E 72.62'
NAIL & TAG INGHAM COUNTY SOUTH SIDE UTILITY POLE N81°E 148.09'

* NAIL & TAG INGHAM COUNTY REFERS TO A 2 1/2" MAGNETIC NAIL AND 1 1/2" ALUMINUM TAG STAMPED PA 345 INGHAM WITNESS.

Signed by David Clifford

Surveyor's Michigan License No. 25837

Date AUGUST 16, 2007



FORM APPROVED BY MICHIGAN STATE BOARD OF PROFESSIONAL SURVEYORS, JAN 28, 1971
REVISED MAY 14, 1975
REVISED JAN, 1983
REVISED OCT, 1995

C-02 T3N R2E
LEROY TOWNSHIP
CONTINUED FROM FRONT

RONALD L. ENGER, PS 28409, USED CORNER IN THE PROPOSED PAWAPI WOODS CONDOMINIUM, THE FIELD WORK FOR THIS CONDOMINIUM WAS DONE BY DAVID L. CLIFFORD, PS 25837, STARTING IN JUNE 2006 AND CONTINUING TO THE PRESENT. I USED THE POSITION USED BY ALL THE SURVEYORS MENTIONED ABOVE.

LAND CORNER RECORDATION CERTIFICATE
Filing Requirement of Act 74, Mich. P.A. 1970

For corners in

INGHAM
(County)
LEROY TOWNSHIP

Located In:

Corner Code #

1. Public Land Survey

T 3N R 2E

C 3

B:12 P:288 10/3/06 8:41 AM
2006-050181 LAND CORNERS Receipt #17557
Paula Johnson, Ingham County, Michigan

Page: 2



2. Property Controlling
in Section

S

T R

S

T R

3. Miscellaneous
Property in Sec.

S

T R

S

T R

4. Lot No. , Recorded Plat

5. Private Claims

Register of Deeds Stamp & File Number

	A	B	C	D	E	F	G	H	I	J	K	L	M
1													
2													
3													
4													
5													
6													
7													
8													
9													
10													
11													
12													
13													

I, DAVID L. CLIFFORD, in a field survey on AUGUST 30, 2006 do hereby state that under requirements of P.A. 74, Michigan P.A. of 1970, the corner points mentioned in lines 1 and 2 above were in conformance with regulations and rules therefore as required in the current manual of survey instructions of the United States Department of the Interior, Bureau of Land Management or by a decree of a Court of Law and for that the corner points mentioned in lines 3, 4 and 5 above were in conformance with the rules of the Michigan Board of Land Surveyors or by a Decree of a Court of Law; established, re-established, monumented, recovered, found as expressed below:

NOTE: Not more than 2 corners, all in the same town and range, may be recorded on this certificate.

A. Description of original monument and accessories and/or subsequent restoration:

1. JOSEPH WAMPLER, DEPUTY SURVEYOR, "SET POST COR TO 5, 6, 7, & 8 FW IRONWOOD 6, S40 1/2W, 6, ASH 13, N50E, 17"

2. ANSON JACKSON, COUNTY SURVEYOR, USED CORNER IN A SURVEY RECORDED IN VOLUME 2 PAGE 155 OF COUNTY SURVEYOR'S NOTES ON AUGUST 26, 1858 WITNESSED BY: IRON 6, S210 1/2W, 6, ASH 13, N50E, 17.

3. A MARGINAL NOTE ON JACKSONS SURVEY IN VOLUME 2 PAGE 155: "NEW STONE, BRICK & IRON FW ELM 20, N20W, 81; ELM 6, S67W, 34" (J.H. MULLETT, 1881)

4. E.A. CALKINS, COUNTY SURVEYOR, USED CORNER IN SURVEY RECORDED IN VOL. 5, PAGE 155 IN SEPTEMBER 27, 1901: "OLD STONE AND BRICK F.W. ELM 10, S66 1/4W, 132 1/2L, APPLE 6, S19W, 75 L MEASURED WEST 2614.26' TO B-3. MEASURED WEST 1307.13' TO 1/8 CORNER (AXLE STUB, TILE & BRICK). MEASURED EAST 2654.85' TO D-3. CALKINS SHOWS A DEFLECTION FROM THE SOUTH LINE OF SECTION 5 TO THE SOUTH LINE OF SECTION 6 OF 3°55' TO THE SOUTH.

CONTINUED ON REVERSE

B. Description of corner evidence found and/or method applied in restoring or reestablishing corner:

FOUND 1/2"x14" BAR 5' NORTH OF CENTERLINE LYNN ROAD ON OCCUPATION LINE TO SOUTH. SEARCHED AREA WITH GROUND PENETRATING RADAR AND FOUND NO OTHER INDICATION OF CORNER LOCATION. EXCAVATED 18" DIAMETER HOLE 2' DEEP AND FOUND NO OTHER EVIDENCE OF CORNER LOCATION. AREA IS IN 3'-4' ROAD CUT. ACCEPTED FOUND MONUMENTATION AS PERPETUATION OF CORNER AND REPLACED 1/2" BAR WITH STANDARD BAR & CAP. MEASURED WEST 2621.27' TO B-3. MEASURED WEST 1313.51' TO 1/8 CORNER (CALKINS AXLE STUB). MEASURED EAST 2658.03' TO D-3. MEASURED A DEFLECTION FROM THE SOUTH LINE OF SECTION 5 TO THE SOUTH LINE OF SECTION 6 OF 3°54'40" SOUTH (CLOSELY MATCHING CALKINS DEFLECTION)

C. Description of monument for corner and accessories established to perpetuate locating the position of the corner:

3/4"x24" STEEL BAR AND 2 1/4" ALUMINUM CAP STAMPED INGHAM CO PA 345 25837 IN MONUMENT BOX		
NAIL & INGHAM CO TAG SOUTH SIDE 18" TWIN OAK	N83°E	226.00'
NAIL & INGHAM CO TAG NORTH SIDE 24" OAK	S78°E	125.39'
NAIL & INGHAM CO TAG NORTH SIDE 16" OAK	S62°E	54.95'
CONCRETE MONUMENT WITH 1/2" BAR	S4°E	44.99'
NAIL & INGHAM CO TAG SOUTH SIDE UTILITY POLE	N67°W	142.27'

"NAIL & INGHAM CO TAG" REFERS TO A SET MAGNETIC NAIL AND 1 1/2" ALUMINUM TAG STAMPED "INGHAM WITNESS PA 345"



Signed by David Clifford

Date SEPTEMBER 7, 2006

Surveyor's Michigan License No. 25837

P.A. 345 INGHAM COUNTY
PEER APPROVED 9/26/2006 re

FORM APPROVED BY MICHIGAN STATE BOARD OF PROFESSIONAL SURVEYORS, JAN. 28, 1971
REVISED MAY 14, 1976
REVISED JAN. 1983
REVISED OCT. 1986

C03
T3N R2E LEROY TOWNSHIP
CONTINUED FROM FRONT

5. INGHAM COUNTY ROAD COMMISSION CORNER GRID MAP SHOWS CORNER: 1/2" IRON; 12" ELM, N27°W, 25.86'; 23" OAK, N60°E, 71.84'; 7" ELM, S13°W, 27.16'
6. MDOT 280 FORM, HARRY JOHNSON, SURVEY CHIEF, SHOWS CORNER WITH SAME MONUMENT AND WITNESSES AS ITEM 5 ABOVE.
7. OSCAR BOSS, RLS 13574, USED CORNER IN AN ACT 132 SURVEY RECORDED IN LIBER 1 PAGE 981 ON OCTOBER 17, 1973 AND RECORDED CORNER UNDER ACT 74 IN LIBER 3 PAGE 87 ON APRIL 25, 1974 AS IRON FD: S64°W 59.78, N/S 12" OAK; S70°E 66.59, NAIL N/S 6" ASPEN; S72°E 126.94, NAIL N/S 12" OAK
8. LARRY BRYAN, RLS 25832, USED CORNER IN AN ACT 132 SURVEY RECORDED IN LIBER 6 PAGE 32 ON FEBRUARY 7, 1990 AS: FOUND 1/2" BAR 6" NORTH OF CENTERLINE OF LINN RD. ON TREE ROW SOUTH; FOUND NAIL & TAG EAST SIDE 14" ELM, S05°E, 81.08'; SET NAIL & TAG NORTH SIDE 16" OAK, S75°E, 125.30'; SET NAIL & TAG NORTHEAST SIDE 8" OAK, S60°E, 55.46'
9. MAURICE MAHIEU, PS 28414, USED CORNER IN ACT 132 SURVEYS RECORDED IN LIBER 9 PAGE 69 ON JULY 1, 2004 AND IN LIBER 9 PAGE 233 ON OCTOBER 12, 2005 AS: 1/2" BAR 6" N OF CENTERLINE LINN ROAD ON TREE ROW SOUTH; FND: N&T 25832 NORTH SIDE 21" OAK, S77°E, 125.22'; FND. N&T 25832 NORTH SIDE 12" OAK, S62°E, 54.99'; FND CONC. MONUMENT, S04°E, 45.03'; FND. N&T 25832 SOUTH SIDE UTILITY POLE, N66°W, 142.13'
10. FIELD NOTES OF GEODETIC DESIGN, DAVE VANDERBERGHE, PS 51489 ON DECEMBER 27, 2004: MEASURED NORTH 2667.99' TO C 02 AND WEST 2621.21' TO B 03

LAND CORNER RECORDATION CERTIFICATE
Filing Requirement of Act 74, Mich. P.A. 1970

For corners in

INGHAM

(County)

LEROY TOWNSHIP

Located in:

Corner Code #

1. Public Land Survey

T 3N R 2E

D 01

2. Property Controlling
in Section

S

T R

3. Miscellaneous
Property in Sec.

S

T R

4. Lot No. , Recorded Plat

5. Private Claims

B: 13 P: 152 10/23/2007 10:31 AM
2007-045631 LAND CORNERS Receipt #39521
Paula Johnson, Ingham County, Michigan

Pages: 2



	A	B	C	D	E	F	G	H	I	J	K	L	M
1													
2	6		5		4		3		2		1		
3													
4	7		8		9		10		11		12		
5													
6	10		17		16		15		14		13		
7													
8	19		20		21		22		23		24		
9													
10	30		29		28		27		26		25		
11													
12	31		32		33		34		35		36		
13													

I, DAVID L. CLIFFORD, in a field survey on AUGUST 15, 2007 do hereby state that under requirements of P.A. 74, Michigan P.A. of 1970, the corner points mentioned in lines 1 and 2 above were in conformance with regulations and rules therefore as required in the current manual of survey instructions of the United States Department of the Interior, Bureau of Land Management or by a decree of a Court of Law and/or that the corner points mentioned in lines 3, 4 and 5 above were in conformance with the rules of the Michigan Board of Land Surveyors or by a Decree of a Court of Law; established, re-established, monumented, recovered, found as expressed below:

NOTE: Not more than 2 corners, all in the same town and range, may be recorded on this certificate.

A. Description of original monument and accessories and/or subsequent restoration:

1. CORNER NOT SET IN ORIGINAL GOVERNMENT SURVEY

2. A. JACKSON, COUNTY SURVEYOR SET CORNER IN A SURVEY RECORDED IN VOLUME 1 PAGE 176 IN MAY 1845 AND USED IT IN A SURVEY RECORDED IN VOLUME 2 PAGE 26 WITH NO MENTION OF MONUMENT: BEECH 10", S12 $\frac{1}{2}$ E, 3 $\frac{1}{2}$ LKS; IRON 5", N2 $\frac{1}{2}$ E, 16 $\frac{1}{2}$ LKS.

3. JAMES STEPHENS, RLS 16053, RECORDED CORNER UNDER ACT 74 IN LIBER 2 PAGE 505 IN SEPTEMBER 1973 AND USED IT IN AN ACT 132 SURVEY RECORDED IN LIBER 1 PAGE 765: 5/8" ROD WITNESSED WITH SURVEY TAG NAILED TO E. SIDE UTILITY POLE, N68°41'W, 26.62'; E. SIDE WILD CHERRY TREE, N75°59'W, 2.25', W. SIDE 8" OAK TREE, N80°27'E, 12.0'

4. RON HELSEL, RLS 18994, USED CORNER IN AN ACT 132 SURVEY RECORDED IN LIBER 1 PAGE 1277 ON JULY 10, 1974: WITH NO MENTION OF MONUMENT OR WITNESSES

CONTINUED ON BACK OF FORM

B. Description of corner evidence found and/or method applied in restoring or reestablishing corner:

FOUND $\frac{1}{2}$ " BAR & CAP 18994 AT INTERSECTION FENCE FROM SOUTH AND FENCE TO EAST. EXCAVATED 3'X6' HOLE AROUND POST AND TO NORTH. FOUND AN ABUNDANCE OF ORDINARY FENCE POST STONES. ACCEPTED FOUND MONUMENTATION AS BEST AVAILABLE EVIDENCE OF CORNER LOCATION AS IT AGREES WITH JACKSON'S DISTANCE TO SOUTH AND BECAUSE OF LONG USAGE. SET $\frac{3}{4}$ " X 24" STEEL BAR & INGHAM COUNTY PA345 CAP 1.70' NORTH ON STANDARD LINE. MEASURED WEST 2676.66' TO C-1. MEASURED SOUTH 1772.60' TO D-2.

C. Description of monument for corner and accessories established to perpetuate locating the position of the corner:

3/4" X 24" STEEL BAR WITH INGHAM COUNTY PA345 ALUMINUM CAP STAMPED 25837		
NAIL & INGHAM COUNTY TAG SOUTH SIDE 15" HICKORY	N05°E	21.74'
NAIL & INGHAM COUNTY TAG NE SIDE 7" OAK	S27°E	14.83'
NAIL & INGHAM COUNTY TAG EAST SIDE UTILITY POLE	S52°W	33.16'
CENTERLINE 3" STEEL GATE POST	N38°W	14.91'
FACE OF 6" STEEL BACKSTOP POST (MOST WESTERLY POST)	N35°W	63.09'
CENTERLINE GRAVEL DRIVE TO PAWAPI YMCA CAMP	WEST	18.0'
3/4" X 24" BAR & PA345 ALUMINUM CAP (D-13 T4N R2E)	S88°E	29.16'
1/2" BAR & CAP 18994 (D-1 AS RECORDED LIBER 1 PAGE 765)	SOUTH	1.70'

NAIL & INGHAM COUNTY TAG REFERS TO A SET 2 $\frac{1}{2}$ " MAGNETIC NAIL AND 1 $\frac{1}{2}$ " ALUMINUM TAG STAMPED "INGHAM WITNESS PA 345"



Signed by David Clifford

Date SEPTEMBER 06, 2007

Surveyor's Michigan License No. 25837

FORM APPROVED BY MICHIGAN STATE BOARD OF PROFESSIONAL SURVEYORS, JAN. 28, 1971

REVISED MAY 14, 1976
REVISED JAN. 1983
REVISED OCT., 1995

P.A. 345 INGHAM COUNTY
PEER APPROVED 9/21/2007 M

D-01 T3N R2E
LEROY TOWNSHIP
CONTINUED FROM FRONT

5. JAMES STEPHENS, RLS 16053, USED CORNER IN AN ACT 132 SURVEY RECORDED IN LIBER 3 PAGE 656 ON DECEMBER 4, 1978: 5/8" IRON ROD; NAIL & TAG IN 8" OAK TREE, N80°27'E, 12.0'; NAIL & TAG IN 6" W. CHERRY TREE, N75°59'W, 2.25'; NAIL & TAG IN UTILITY POLE, N68°41'W, 26.62'
6. MARVIN F. FOUTY, RLS 18989, USED CORNER IN AN ACT 132 SURVEY RECORDED IN LIBER 4 PAGE 615 IN JANUARY, 1983: 5/8" IRON ROD; NAIL & TAG IN 8" OAK, NE, 10.0'; NAIL & TAG IN 6" W. CHERRY, NW, 2.25'; NAIL & TAG IN UTILITY POLE, NW, 26.62'
7. FRED WHITE, RLS 12034, USED CORNER IN ACT 132 SURVEYS RECORDED IN LIBER 4 PAGES 375 & 376 ON OCTOBER 13, 1981 WITH NO MENTION OF MONUMENT OR WITNESSES
8. DOUGLAS RICHARDSON, LLS 31603, USED CORNER IN AN ACT 132 SURVEY RECORDED IN LIBER 5 PAGE 552 ON NOVEMBER 23, 1988: FOUND 5/8" IRON (N 1/4 CORNER SECTION 5, T3N, R2E) S88°W, 46.37 FEET; SET NAIL & TAG 30" OAK, N40°E, 23.10 FEET; SET NAIL & TAG 30" OAK, N40°W, 28.04 FEET; SET NAIL & TAG 20" OAK, NORTH, 6.17 FEET
9. LARRY BRYAN, LLS 25832, USED CORNER IN ACT 132 SURVEYS RECORDED IN LIBER 6 PAGES 51-59 ON FEBRUARY 20, 1990, IN LIBER 6 PAGE 201 ON JUNE 18, 1990 AND IN LIBER 5 PAGE 982 ON FEBRUARY 1, 1989: FOUND 5/8" BAR AT THE INTERSECTION OF SOUTH & EAST FENCE LINE; FOUND NAIL & TAG #25832 IN SOUTH SIDE 8" OAK, N80°E, 12.33'; FOUND NAIL & TAG #25832 IN SOUTH SIDE 6" CHERRY, N75°W, 2.30'; FOUND NAIL & TAG #25832 IN EAST SIDE UTILITY POLE, N10°E, 26.65'
10. RON HELSEL, RLS 18964, USED CORNER IN AN UNRECORDED ACT 132 SURVEY IN APRIL, 2001: FOUND REBAR; FD. NAIL & TAG #25832 S/SIDE 12" OAK, N80°E, 12.33'; SET NAIL & TAG # 18994 E/SIDE 6" CHERRY, S05°W, 5.57'; NAIL & TAG #25832 E/SIDE 8" CHERRY, NORTH, 19.56'; SOUTH 1777.53' TO D-2 & EAST 46.37' TO D-13 T4N R2E; WEST 66.04' TO BAR & CAP #18994
11. RONALD L. ENGER, PS 28409, USED CORNER IN THE PROPOSED PAWAPI WOODS CONDOMINIUM, THE FIELD WORK FOR THIS CONDOMINIUM WAS DONE BY DAVID L. CLIFFORD, PS 25837, STARTING IN JUNE 2006 AND CONTINUING TO THE PRESENT. I USED THE POSITION USED BY ALL THE SURVEYORS MENTIONED ABOVE.

LAND CORNER RECORDATION CERTIFICATE
Filing Requirement of Act 74, Mich. P.A. 1970

For corners in

INGHAM

(County)

LEROY TOWNSHIP

Located In:

Corner Code #

1. Public Land Survey

T 3N R 2E

D 02

T R

T R

T R

T R

T R

T R

T R

2. Property Controlling
in Section

S

T R

S

T R

3. Miscellaneous
Property in Sec.

S

T R

S

T R

4. Lot No. , Recorded Plat

5. Private Claims

B: 13 P: 155 10/23/2007 10:31 AM
2007-045634 LAND CORNERS Receipt #33521
Paula Johnson, Ingham County, Michigan

Pages: 2



	A	B	C	D	E	F	G	H	I	J	K	L	M
1													
2	6			5				3		2			1
3													
4	7			8				9		10			11
5													
6	18			17				16		15			14
7													
8	19			20				21		22			23
9													
10	30			29				28		27			26
11													
12	31			32				33		34			35
13													

I, DAVID L. CLIFFORD, in a field survey on AUGUST 15, 2007 do hereby state that under requirements of P.A. 74, Michigan P.A. of 1970, the corner points mentioned in lines 1 and 2 above were in conformance with regulations and rules therefore as required in the current manual of survey instructions of the United States Department of the Interior, Bureau of Land Management or by a decree of a Court of Law and/or that the corner points mentioned in lines 3, 4 and 5 above were in conformance with the rules of the Michigan Board of Land Surveyors or by a Decree of a Court of Law; established, re-established, monumented, recovered, found as expressed below:

NOTE: Not more than 2 corners, all in the same town and range, may be recorded on this certificate.

A. Description of original monument and accessories and/or subsequent restoration:

1. CORNER NOT SET IN ORIGINAL GOVERNMENT SURVEY

2. A. JACKSON, COUNTY SURVEYOR, SET CORNER IN A SURVEY RECORDED IN COUNTY SURVEYOR'S NOTES VOLUME 1 PAGE 176 IN MAY, 1845: MAPLE 22, S2W, 24 1/2; BEECH 6, N41E, 14. ALSO USED CORNER IN A SURVEY RECORDED IN COUNTY SURVEYOR'S NOTES VOLUME 2 PAGE 26 ON NOVEMBER 17, 1847 WITH NO MENTION OF MONUMENT OR WITNESSES. MEASURED NORTH 107 RODS 6 LINKS (1769.46') TO D-1. MEASURED 26 RODS (429') SOUTH TO CENTERLINE GRAND RIVER ROAD.

CONTINUED ON BACK

B. Description of corner evidence found and/or method applied in restoring or reestablishing corner:

IN JUNE 2006 FOUND 1/2" BAR & CAP "BRYAN 25832" 6' EAST OF FENCE TO NORTH & SOUTH. DISTANCE FROM CENTERLINE GRAND RIVER AVENUE TO FOUND BAR & CAP DOES NOT AGREE WITH JACKSON'S 1847 SURVEY. AS DISTANCE FROM GRAND RIVER AVENUE TO NORTH 1/4 CORNER MATCHES JACKSON'S SURVEY ALMOST EXACTLY, SEARCHED AT HIS DISTANCE FROM CENTERLINE GRAND RIVER AVENUE TO CORNER (429') IN NORTH-SOUTH FENCE. FOUND A VERY RUSTED 1 1/2" PIPE 6" DEEP IN FENCE. EXCAVATED 3' DIAMETER HOLE 3' DEEP AROUND PIPE AND FOUND LONG, POINTED 6" DIAMETER STONE 18" DEEP. AT 3' DEEP STONE WAS STILL SOLID IN GROUND AND STILL 6" IN DIAMETER. ACCEPTED STONE AND PIPE AS CORNER AS ESTABLISHED BY A. JACKSON AND SET 18" X 3/4" PIPE WITH CAP 25837 IN PLACE OF PIPE. RETURNED ON AUGUST 15, 2007 AFTER RESOLVING POSITION OF ADJACENT 1/4 CORNER AND CAPPED PIPE WITH INGHAM COUNTY PA345 ALUMINUM CAP. CORNER LIES 6.4' NORTH AND 6.4' WEST OF STRAIGHT LINE INTERSECTION BETWEEN 1/4 CORNERS. MEASURED NORTH 1768.05' TO D-1 MEASURED SOUTH 2656.08' TO D-3. MEASURED WEST 2663.14 TO C-2. MEASURED EAST 2696.44' TO E-2.

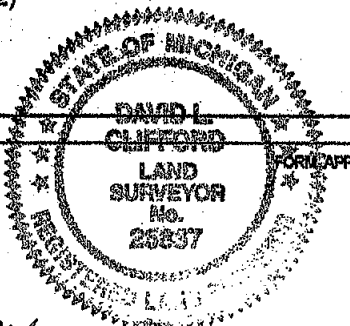
C. Description of monument for corner and accessories established to perpetuate locating the position of the corner:

18" X 3/4" PIPE WITH INGHAM COUNTY PA345 ALUMINUM CAP STAMPED 25837 ON TOP OF STONE IN NORTH-SOUTH FENCE		
MAGNETIC NAIL & INGHAM COUNTY PA 345 WITNESS TAG WEST SIDE 12" CHERRY	N4°W	22.04'
MAGNETIC NAIL & INGHAM COUNTY PA 345 WITNESS TAG EAST SIDE 5" ASH	S10°E	2.81'
MAGNETIC NAIL & INGHAM COUNTY PA 345 WITNESS TAG WEST SIDE 15" TWIN WALNUT	S3°W	56.87'
MAGNETIC NAIL & INGHAM COUNTY PA 345 WITNESS TAG NW SIDE UTILITY POLE	S58°W	25.35'
CENTERLINE PAVEMENT PAWAPI WAY	WEST	41.0'
1/2" BAR & CAP "BRYAN 25832" (D-2 AS RECORDED LIBER 7 PAGE 122)	S44°E	9.32'
CENTERLINE GRAND RIVER AVENUE	SOUTH	429.4'

PROPERTY CONTROLLING CORNER (D-02 AS RECORDED LIBER 7 PAGE 122)
1/2" BAR & CAP "BRYAN 25832" AT INTERSECTION STRAIGHT LINES BETWEEN 1/4 CORNERS
MAGNETIC NAIL & INGHAM COUNTY PA 345 WITNESS TAG WEST SIDE 12" CHERRY
MAGNETIC NAIL & INGHAM COUNTY PA 345 WITNESS TAG EAST SIDE 5" ASH
MAGNETIC NAIL & INGHAM COUNTY PA 345 WITNESS TAG WEST SIDE 15" TWIN WALNUT
MAGNETIC NAIL & INGHAM COUNTY PA 345 WITNESS TAG NW SIDE UTILITY POLE
CENTERLINE PAVEMENT PAWAPI WAY
3/4" PIPE & INGHAM COUNTY PA 345 CAP (D-02)
CENTERLINE GRAND RIVER AVENUE

N16°W	29.80'
N57°W	7.17'
S10°W	50.98'
S78°W	28.85'
WEST	48.0'
N44°W	9.32'
SOUTH	423.0'

Signed by David Clifford
Surveyor's Michigan License No. 25837



Date SEPTEMBER 25, 2007

FOR APPROVED BY MICHIGAN STATE BOARD OF PROFESSIONAL SURVEYORS, JAN. 23, 1971
REVISED MAY 14, 1975
REVISED JAN. 1983
REVISED OCT. 1996

P.A. 345 INGHAM COUNTY
PEER APPROVED: 9/25/2007 M

D-02 T3N R2E
LEROY TWP
CONTINUED FROM FRONT

3. LARRY BRYAN, RLS 25832, RECORDED CORNER UNDER PA 74 IN LIBER 7 PAGE 122 ON MARCH 12, 1989: "SET 1/2" BAR & CAP #25832 AT THE INTERSECTION OF THE NORTH-SOUTH 1/4 LINE AND THE EAST-WEST 1/4 LINE OF SECTION 5. CORNER FALLS 5.6 FEET EAST OF A TREE LINE/HEDGE ROW. SET NAIL & TAG #25832 IN SOUTH SIDE POWER POLE, S80°W, 29.07'; SET NAIL & TAG #25832 IN EAST SIDE 8" CHERRY, N05°W, 30.28'; WEST SIDE OF WEST 3" STEEL GATE POST, S30°W, 57.82'. ALSO USED CORNER IN AN ACT 132 SURVEY RECORDED IN LIBER 6 PAGE 59 ON FEBRUARY 28, 1990 WITH SAME MONUMENT AND WITNESSES
4. RONALD L. ENGER, PS 28409, USED CORNER IN THE PROPOSED PAWAPI WOODS CONDOMINIUM, THE FIELD WORK FOR THIS CONDOMINIUM WAS DONE BY DAVID L. CLIFFORD, PS 25837, STARTING IN JUNE 2006 AND CONTINUING TO THE PRESENT. I USED THE POSITION FOR THE CORNER DESCRIBED IN PART B OF THIS CERTIFICATE.

LAND CORNER RECORDATION CERTIFICATE
Filing Requirement of Act 74, Mich. P.A. 1970

For corners in

INGHAM
(County)
LEROY TOWNSHIP

Located In:

Corner Code #

1. Public Land Survey

T 3N R 2E

D 3

B:12 P:289 10/3/06 8:41 AM
2006-050182 LAND CORNERS Receipt #17557
Paula Johnson, Ingham County, Michigan

Page: 2



2. Property Controlling
in Section

S T
S T

T R
T R

3. Miscellaneous
Property in Sec.

S T
S T

T R
T R

4. Lot No. , Recorded Plat

5. Private Claims

Register of Deeds Stamp & File Number

	A	B	C	D	E	F	G	H	I	J	K	L	M
1													
2													
3													
4													
5													
6													
7													
8													
9													
10													
11													
12													
13													

I, DAVID L. CLIFFORD, in a field survey on AUGUST 30, 2006 do hereby state that under requirements of P.A. 74, Michigan P.A. of 1970, the corner points mentioned in lines 1 and 2 above were in conformance with regulations and rules therefore as required in the current manual of survey instructions of the United States Department of the Interior, Bureau of Land Management or by a decree of a Court of Law and /or that the corner points mentioned in lines 3, 4 and 5 above were in conformance with the rules of the Michigan Board of Land Surveyors or by a Decree of a Court of Law; established, re-established, monumented, recovered, found as expressed below:

NOTE: Not more than 2 corners, all in the same town and range, may be recorded on this certificate.

A. Description of original monument and accessories and/or subsequent restoration:

1. JOSEPH WAMPLER, DEPUTY SURVEYOR, SET CORNER IN ORIGINAL GOVERNMENT SURVEY, DECEMBER 8, 1825: SET 1/4 POST AT AV D FW SUGAR 20, N84 1/2E, 7 & BEECH 4, S55 1/2W, 6

2. E.A. CALKINS, COUNTY SURVEYOR, USED CORNER IN SURVEY RECORDED SEPTEMBER 27, 1901: OLD STONE AND IRON F.W. NE COR OF RIX WALL, S39°W, 198 1/2 L; SUGAR 10, S63 1/2°E, 94 L. MEASURED WEST 2654.85' TO C-3.

3. JAMES STEPHENS, RLS 16053, RECORDED CORNER UNDER ACT 74 IN LIBER 2 PAGE 519 ON OCTOBER 16, 1973: A 5/8 INCH IRON ROD WAS FOUND IN THE CENTERLINE OF THE SECTION LINE ROAD (LYNN ROAD) AND ON A PROJECTION OF A FENCE NORTH OF THE CORNER. THE 5/8 INCH IRON ROD FOUND IN THE SOUTH 1/4 CORNER WAS LEFT IN POSITION WITH THE FOLLOWING WITNESSES: SURVEY TAG IN THE NE SIDE OF A 36" MAPLE TREE, S69°03W, 137.20 FEET; SURVEY TAG IN THE NORTH SIDE OF A 18" WALNUT TREE, S7°23'W, 42.55 FEET; SURVEY TAG IN THE SOUTH SIDE OF A UTILITY POLE, N9°25'E, 24.95 FEET; THE BEARING NORTH OF THE CORNER IS N0°18'31"W FOR THE 1/4 LINE; THE BEARING EAST OF THE CORNER IS S87°37'30"E FOR THE SECTION LINE. STEPHENS ALSO USED CORNER IN ACT 132 SURVEYS RECORDED IN LIBER 1 PAGE 765 ON JUNE 4, 1973 AND IN LIBER 3 PAGE 656 ON DECEMBER 4, 1976 WITH SAME WITNESSES AS ON ACT 74 LCRC.

CONTINUED ON BACK OF FORM

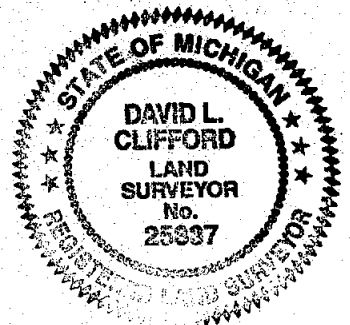
B. Description of corner evidence found and/or method applied in restoring or reestablishing corner:

FOUND 3/4"X26" BAR ON CENTERLINE LYNN ROAD MATCHING STEPHENS AND BENTONS UTILITY POLE WITNESS TO THE NORTHEAST AND ALL BRYAN WITNESSES. SEARCHED AREA WITH GROUND PENETRATING RADAR AND GOT READING 1.5' NORTHEAST OF IRON. EXCAVATED 18" DIAMETER HOLE 2' DEEP AT READING AND FOUND VERY SMALL STONE THAT I DON'T BELIEVE IS CORNER. EXCAVATED 18" DIAMETER HOLE 18" DEEP AT IRON AND FOUND STONE AS CALLED FOR BY CALKINS ON NORTH SIDE OF IRON. FOUND VERY RUSTED PIECE OF IRON UNDER BAR. ACCEPTED FOUND MONUMENTATION AS PERPETUATION OF CORNER. REPLACED BAR WITH STANDARD BAR CAP. SET MONUMENT BOX. MEASURED WEST 2658.03' TO C-3. MEASURED EAST 2683.37' TO D-3.

C. Description of monument for corner and accessories established to perpetuate locating the position of the corner:

3/4"X26" STEEL BAR WITH 2 1/4" ALUMINUM INGHAM COUNTY PA 345 CAP 25837 IN MONUMENT BOX		
NAIL & TAG (KEBS) EAST SIDE 8" WALNUT	N21°E	23.69'
CENTERLINE SOUTH SIDE 7" RED MAPLE	N68°E	72.15'
NAIL & INGHAM CO TAG SOUTH SIDE UTILITY POLE	S44°E	328.67'
NAIL & INGHAM CO TAG SIDE UTILITY POLE	S34°W	286.19'
CENTERLINE SW SIDE 7" CHINESE ELM	N53°W	79.98'
NAIL & TAG (KEBS) EAST SIDE UTILITY POLE	N8°E	25.49'

"NAIL & INGHAM CO TAG" REFERS TO A SET MAGNETIC NAIL AND 1 1/2" ALUMINUM TAG STAMPED
"INGHAM WITNESS PA 345"



Signed by David Clifford

Date SEPTEMBER 7, 2006

Surveyor's Michigan License No. 25837

FORM APPROVED BY MICHIGAN STATE BOARD OF PROFESSIONAL SURVEYORS, JAN. 28, 1971
REVISED MAY 14, 1976
REVISED JAN, 1983

P.A. 345 INGHAM COUNTY
PEER APPROVED 9/26/2006 mc

D 03 T3N R2E
S 1/4 CORNER SECTION 5 LEROY TOWNSHIP
CONTINUED FROM FRONT

4. RON HELSEL, RLS 18994, USED CORNER IN AN ACT 132 SURVEY RECORDED IN LIBER 1 PAGE 1277 ON JULY 10, 1974 WITH NO MENTION OF MONUMENT OR WITNESSES.
5. MARVIN FOUTY, RLS 18989, USED CORNER IN AN ACT 132 SURVEY RECORDED IN LIBER 4 PAGE 615 ON JANUARY 12, 1983 CITING THE STEPHENS WITNESSES
6. FRED WHITE, RLS 12034 USED CORNER IN ACT 132 SURVEYS RECORDED IN LIBER 4 PAGE 375 ON OCTOBER 13, 1981 AND IN LIBER 4 PAGE 376 ON OCTOBER 13, 1981 WITH NO MENTION OF MONUMENT OR WITNESSES
7. PATRICK BENTON, RLS 19826, USED CORNER IN AN ACT 132 SURVEY RECORDED IN LIBER 4 PAGE 823 ON MAY 9, 1984: FD. 5/8" IRON ROD IN ASPHALT RD.; NORTH UTILITY POLE NAIL & TAG # 16053 S/S 25.2'; N50°W FIR # 14762 CEG 33.00'; S10°W 18 TW. ASH NAIL & TAG # 16053 N/S 42.4'; N70°W 36" ASH NAIL S/S 89.03'
8. LARRY BRYAN, RLS 25832, OF KEBS INC. USED CORNER IN ACT 132 SURVEYS RECORDED IN:
LIBER 5 PAGE 982 ON FEBRUARY 1, 1989
LIBER 6 PAGE 30 ON FEBRUARY 7, 1990
LIBER 6 PAGE 57 ON FEBRUARY 28, 1990
LIBER 6 PAGE 201 ON JUNE 18, 1990
LIBER 6 PAGE 248 ON JULY 16, 1990
LIBER 7 PAGE 554 ON MARCH 24, 1995
MOST CURRENT MONUMENT AND WITNESSES: FOUND 3/4" BAR IN C/L OF LINN RD.; FOUND NAIL & TAG #16053, SOUTH SIDE POWER POLE, N10°E, 24.95'; FOUND NAIL & TAG, NORTH SIDE 10" ASH, N60°W, 55.62'; FOUND NAIL & TAG, NORTH SIDE POWER POLE, N60°E, 147.00'; SET NAIL & TAG, WEST SIDE 24" ASH, NORTH, 56.89'

LAND CORNER RECORDATION CERTIFICATE
Filing Requirement of Act 74, Mich. P.A. 1970

For corners in

INGHAM
(County)
LOCKE TOWNSHIP

Located In:

Cor

B: 13 P: 208 12/04/2007 08:24 AM
2007-050728 LAND CORNERS Receipt #35175
Paula Johnson, Ingham County, Michigan

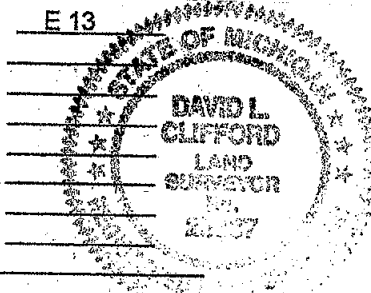
Pages: 2



1. Public Land Survey

T 4N R 2E
T R
T R
T R
S T R
S T R
S T R
S T R

E 13



Register of Deeds Stamp & File Number

2. Property Controlling
in Section

3. Miscellaneous
Property in Sec.

4. Lot No. , Recorded Plat

5. Private Claims

I, DAVID L. CLIFFORD, in a field survey on OCTOBER 24, 2007 do hereby state that under requirements of P.A. 74, Michigan P.A. of 1970, the corner points mentioned in lines 1 and 2 above were in conformance with regulations and rules therefore as required in the current manual of survey instructions of the United States Department of the Interior, Bureau of Land Management or by a decree of a Court of Law and /or that the corner points mentioned in lines 3, 4 and 5 above were in conformance with the rules of the Michigan Board of Land Surveyors or by a Decree of a Court of Law; established, re-established, monumented, recovered, found as expressed below:

NOTE: Not more than 2 corners, all in the same town and range, may be recorded on this certificate.

*THIS LCRC SUPERSEDES LCRC RECORDED IN LIBER 8 PAGE 473 (CORNER WAS MONUMENTED IN INCORRECT POSITION)

A. Description of original monument and accessories and/or subsequent restoration:

- JOSEPH WAMPLER, DEPUTY SURVEYOR, SET CORNER IN ORIGINAL GOVERNMENT SURVEY IN 1825: POST; ELM 7", N80 1/2°W, 16 LKS; W OAK 9", N87°E, 15 LKS; MAPLE 16", N76 1/2°W, 180 LKS. MEASUREMENTS: 40 CHAINS (2640') EAST TO F-13; 40 CHAINS (2640') WEST TO D-13.
- JOSEPH WAMPLER, DEPUTY SURVEYOR, SET E-1 T3N R2W IN ORIGINAL GOVERNMENT SURVEY IN DECEMBER 1825: INT N BDY 20 LKS (13.20') W OF POST - SET POST COR 4 & 5 FW: ASH 6, S20E, 23; ASH 9, S30E, 31

CONTINUED ON REVERSE

B. Description of corner evidence found and/or method applied in restoring or reestablishing corner:

WHILE RETRACING NORTH LINE OF T3N R2E IN OCTOBER 2006 TO DETERMINE LOCATIONS OF B1, C1 AND D1, DISCOVERED THAT E1 T3N R2E AS REMONUMENTED IN LIBER 8 PAGE 471 IN 1995 AND E13 T4N R2E AS REMONUMENTED IN LIBER 8 PAGE 473 IN 1995 WERE ABOUT 75' NORTH OF THE TOWNSHIP LINE. RETURNED IN OCTOBER 2007 AND RETRACED R.J. ROBB'S SURVEY OF SECTION 4 LEROY AND RECOVERED STONE HE SET AT THE SUPPOSED 1/16 CORNER BETWEEN E1 AND F1. (ROBB SUPPOSEDLY USED E1 AND F1 TO SET 1/16 CORNER, BUT STONE IS OBVIOUSLY AT THE SOUTH 1/16 CORNER OF THE SW 1/4 SECTION 33 OF LOCKE TOWNSHIP). MEASURED 1323.67' FROM STONE TO F13 T4NR2E. PROJECTED LINE FROM F13 THROUGH FOUND STONE 1323.67' WEST AND SET E13 LOCKE. SET E1 LEROY 13.20' TO WEST ON LINE E13 - D13. E13 LIES 3' EAST OF EAST EDGE BITUMINOUS SURFACE OF DIETZ ROAD. E1 LIES 1' EAST OF CENTERLINE DIETZ ROAD. MEASUREMENTS: 2647.34' EAST TO F13; 2646.84 WEST TO D13; 2654.25' NORTH TO E12.

C. Description of monument for corner and accessories established to perpetuate locating the position of the corner:

3/4" X 24" BAR WITH INGHAM COUNTY PA 345 ALUMINUM CAP STAMPED 25837

NAIL & INGHAM WITNESS TAG NE SIDE 42" MAPLE

NAIL & INGHAM WITNESS TAG NORTH SIDE 36" MAPLE

NAIL & INGHAM WITNESS TAG NORTH SIDE 38" MAPLE

SE CORNER SE CONCRETE BRIDGE GUARDRAIL

SW CORNER SW CONCRETE BRIDGE GUARDRAIL

3/4" BAR & YELLOW PLASTIC PA 345 CAP STAMPED 30090 IN MONUMENT BOX (E-1 T3NR2E AS RECORDED L-8, P-471)

3/4" BAR & YELLOW PLASTIC PA 345 CAP STAMPED 30090 IN MONUMENT BOX (E-13 T4NR2E AS RECORDED L-8, P-473)

3/4" BAR AND INGHAM COUNTY PA 345 CAP STAMPED 25837 (E-1 T3N R2E)

N55°W	47.69'
S85°W	39.22'
S57°W	46.01'
N03°W	241.19'
N09°W	258.28'
N21°W	81.30'
N11°W	77.21'
WEST	13.20'

PROPERTY CONTROLLING CORNER (E-13 AS RECORDED LIBER 8 PAGE 473)

3/4" X 24" BAR WITH INGHAM COUNTY PA 345 YELLOW PLASTIC CAP STAMPED 30090 IN MONUMENT BOX

NAIL & INGHAM WITNESS TAG NE SIDE 42" MAPLE

NAIL & INGHAM WITNESS TAG NORTH SIDE 36" MAPLE

NAIL & INGHAM WITNESS TAG NORTH SIDE 38" MAPLE

SE COR/SE COR CONCRETE BRIDGE GUARDRAIL

SW COR/SW COR CONCRETE BRIDGE GUARDRAIL

3/4" BAR & YELLOW PLASTIC PA 345 CAP STAMPED 30090 IN MONUMENT BOX (E-1 T3NR2E AS RECORDED L-8, P-471)

3/4" BAR AND INGHAM COUNTY PA 345 ALUMINUM CAP STAMPED 25837 (E-13 T4N R2E)

3/4" BAR AND INGHAM COUNTY PA 345 ALUMINUM CAP STAMPED 25837 IN MONUMENT BOX (E-1 T4N R2E)

S26°W	53.83'
S17°W	82.57'
S13°W	103.48'
N02°E	165.35'
N08°W	181.17'
WEST	13.13'
S11°E	77.21'
S02°E	75.22'

Signed by David Clifford
Surveyor's Michigan License No. 25837

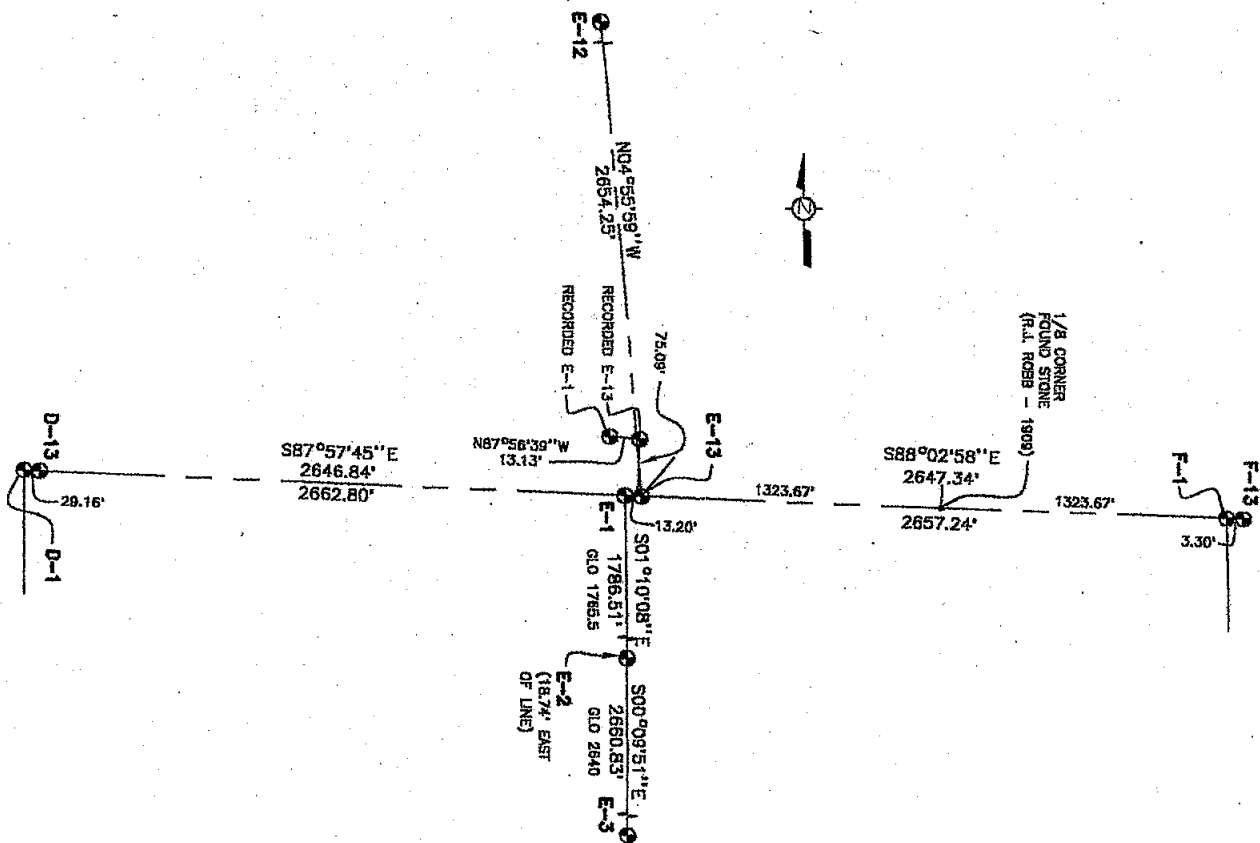
Date NOVEMBER 24, 2007

FORM APPROVED BY MICHIGAN STATE BOARD OF PROFESSIONAL SURVEYORS, JAN. 28, 1971
REVISED MAY 14, 1976
REVISED JAN. 1983
REVISED OCT. 1995

P.A. 345 INGHAM COUNTY
PEER APPROVED 11/20/2007 PC

E-13 T4N R2E
LOCKE TOWNSHIP
CONTINUED FROM FRONT

3. A. JACKSON, COUNTY SURVEYOR, USED CORNER IN SURVEY RECORDED IN VOLUME 2 PAGE 158 IN AUGUST 1853 WITH NO MENTION OF MONUMENT OR WITNESSES. MEASUREMENTS: 79 RODS 13 LINKS (1312.2) EAST TO 1/16 CORNER; 159 ROD 1 1/2 LINKS (2624.4) EAST TO F-13.
4. T J BROWN, COUNTY SURVEYOR, USED CORNER IN SURVEY RECORDED IN VOLUME 2 PAGE 125 IN 1875 AS: "FOUND THE STUMP OF ONE OF THE U.S. BEARING TREES AND THE ROOTS OF THE OTHER. CORNER AND DISTANCE CORRECT. SET POST" WITNESSED BY: SUGAR 10", N79E, 61 LKS. ALSO "SET POST 20 LKS WEST FOR CORNER OF SECS 4 AND 5 OF TOWN THREE NORTH OF RANGE TWO EAST"
5. R.J. ROBB, COUNTY SURVEYOR, USED E-1, T3N R2E IN A SURVEY RECORDED IN VOLUME 3 PAGE 217 IN NOVEMBER 1908 AS A STONE: H. MAPLE 16", S58°E, 56 LKS: S. MAPLE 15", S89°W, 35 LKS. MEASUREMENTS: 20 CHAINS (1320') EAST TO STONE & IRON AT 1/16 CORNER; 40 CHAINS (2640' EAST TO F-1; 27.17 CHAINS (1793.2') SOUTH TO E-2; 66.88 CHAINS (4414.1') SOUTH TO E-3.
6. DOUGLAS HOOTH, RLS #7966, RECORDED CORNER UNDER ACT 74 IN LIBER 3 PAGE 543 ON DECEMBER 12, 1975: FOUND "T" IRON IN DIETZ ROAD ON FENCE LINE TO THE WEST AND NOTED TO BE THE SECTION CORNER IN THE INGHAM COUNTY ROAD COMM. ROAD SURVEY. 40" MAPLE, (PK S. SIDE), S20°W, 56.21'; 38" MAPLE (PK N. SIDE), S85°W, 27.14'; 23" MAPLE (PK S. SIDE), N45°E, 46.69'
7. RONNIE M LESTER, RLS #18998, RECORDED CORNER UNDER ACT 74 IN LIBER 6 PAGE 83 ON AUGUST 25, 1980: "EXCAVATED A 6' X 8' HOLE TO AN AVERAGE DEPTH OF 3.8 FEET ON THE CENTERLINE OF DIETZ ROAD AND ON FENCE LINE WEST. FOUND L-ANGLE WITH 3/4" IRON BAR INSIDE, 0.5 FT. EAST OF CENTERLINE OF DIETZ ROAD ON FENCE LINE WEST. ACCEPTED 3/4" IRON BAR FOR CORNER. EXCAVATION CONDUCTED BY INGHAM COUNTY SURVEY AND REMONUMENTATION PROJECT CREW. SET 4" X 36" CONCRETE MONUMENT IN SAME LOCATION AS CORNER RECORDED IN LIBER 3, PAGE 543, 1976." WITNESSED BY: NAIL & TAG, #18998, SOUTH SIDE 36" MAPLE, SW, 56.25'; NAIL & TAG, #18998, NORTH SIDE 36" MAPLE, SW, 27.14'; NAIL & TAG, #18998, SOUTHEAST SIDE 30" MAPLE, NE, 46.88'; NAIL & TAG, #18998, EAST SIDE 36" MAPLE, SW, 84.44'
8. MARVIN FOUTY, RLS #18989, USED CORNER IN ACT 132 SURVEYS RECORDED IN: LIBER 4, PAGE 1095 ON MAY 13, 1983 ("1/2" BAR IN CONCRETE MONUMENT, WITNESSES SAME AS ITEM #4); LIBER 4, PAGE 1077 ON FEBRUARY 15, 1985 (FOUND CONC. MON. LIBER 6, PAGE 83. NO WITNESSES SHOWN); LIBER 5, PAGE 598 ON NOVEMBER 19, 1987 (FOUND PK NAIL OVER MON., REC. L6, P83)
9. DOUGLAS RICHARDSON, PS #31603, USED CORNER IN AN ACT 132 SURVEY RECORDED IN LIBER 5, PAGE 552 ON MARCH 18, 1988: NO REFERENCE TO MONUMENT BUT SHOWS THAT AN IRON WAS SET ALONG WEST RIGHT-OF-WAY OF DIETZ ROAD 33 FEET WEST OF E-13
10. DAVID LOHR, PS 30090, RECORDED CORNER E-13, T4NR2E, LOCKE TOWNSHIP UNDER ACT 74 IN LIBER 8 PAGE 473 ON OCTOBER 24, 1995: SEARCHED AT APPARENT LOCATION OF CORNER AND FOUND NOTHING. EXTENSIVE EXCAVATIONS WERE CONDUCTED IN 1978-80 BY INGHAM COUNTY REMON. SQUADS AND A 4" CONCRETE MONUMENT WAS SET (ITEM A-6). IT APPEARS THAT ROAD HAS BEEN REBUILT SINCE 1988 AS ALL TRACES OF ANY PREVIOUS EXCAVATION ARE NOT VISIBLE. RE-ESTABLISHED LOCATION OF THIS CORNER FROM WITNESS TO NORTHEAST AND DISTANCE TO PROPERTY IRON TO WEST AS SET IN 1988 SURVEY (ITEM A-10). ALSO FOUND TWO (2) 1975 WITNESS TREES TO SOUTHWEST LOCATION OF THIS CORNER, BASED ON 1978 REMON DATA. SE 3/4" X 24" STANDARD REMON. BAR/PA 345 CAP #30090 IN MON BOX, 1.5 FEET WEST CENTERLINE OF DIETZ ROAD, 3.5 FEET NORTH OF FENCE TO WEST. EXCAVATED AT APPARENT LOCATION OF E-13 LOCKE TOWNSHIP, TO DEPTH OF 24" IN AN ATTEMPT TO RECOVER 4" CONCRETE MONUMENT AS RECORDED IN LIBER 6, PAGE 83, (ITEM #6, PART A). FOUND NO TRACE OF CONCRETE MONUMENT. SET E-13 BY USING REMAINING WITNESS TO NORTHEAST AND RECORD DISTANCE OF 33 FEET TO IRON TO WEST. SET 3/4" X 24" STANDARD REMON. BAR/P.A. 345 CAP #30090 IN MON. BOX AT NOTED LOCATION. CORNER FALLS 1.5 FEET EAST OF CENTERLINE OF DIETZ ROAD AND 3.50 FEET M/L NORTH OF FENCELINE TO WEST. SET 3/4" X 24" STANDARD REMON. BAR/PA 345 CAP #30090 IN MON BOX 1.5 FEET WEST CENTERLINE OF DIETZ ROAD, 3.5 FEET NORTH OF FENCE TO WEST; FD. N&T 18998 SE/S 24" ASH, AZ. 35°, 46.88'; SET N&T 30090 SE/S 28" MAPLE, AZ. 191°, 84.44'; SET N&T 30090 SE/S 36" MAPLE, AZ. 200°, 56.26'; SET N&T 30090 NE/S 18" MAPLE, AZ. 295°, 76.10'; FD. 1/2" IRON/CAP #31603, AZ. 268°, 33.00'



LAND CORNER RECORDATION CERTIFICATE
Filing Requirement of Act 74, Mich. P.A. 1970

For corners in

INGHAM
(County)
LEROY TOWNSHIP

Located In:

Corn:

B: 13 P: 207 12/04/2007 08:24 AM
2007-050727 LAND CORNERS Receipt #35175
Paula Johnson, Ingham County, Michigan

Pages: 2



1. Public Land Survey

T 3N R 2E

E 01

T R

T R

T R

T R

T R

T R

T R

T R

T R

T R

T R

T R

T R

T R

T R

T R

T R

T R

T R

T R

T R

T R

T R

T R

T R

T R

T R

T R

T R

T R

T R

T R

T R

T R

T R

T R

T R

T R

T R

T R

T R

T R

T R

T R

T R

T R

T R

T R

T R

T R

T R

T R

T R

T R

T R

T R

T R

T R

T R

T R

T R

T R

T R

T R

T R

T R

T R

T R

2. Property Controlling
in Section

S

T R

S

T R

S

T R

S

T R

3. Miscellaneous
Property in Sec.

S

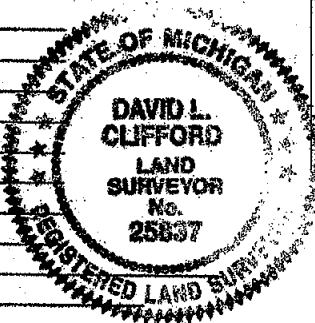
T R

S

T R

4. Lot No. , Recorded Plat

5. Private Claims



Register of Deeds Stamp & File Number

	A	B	C	D	E	F	G	H	I	J	K	L	M
1													
2	6		5			4		3		2		1	
3													
4	7		8			9		10		11		12	
5													
6	18		17			16		15		14		13	
7													
8	19		20			21		22		23		24	
9													
10	30		29			28		27		26		25	
11													
12	31		32			33		34		35		36	
13													

I, DAVID L. CLIFFORD, in a field survey on October 24, 2007 do hereby state that under requirements of P.A. 74, Michigan P.A. of 1970, the corner points mentioned in lines 1 and 2 above were in conformance with regulations and rules therefore as required in the current manual of survey instructions of the United States Department of the Interior, Bureau of Land Management or by a decree of a Court of Law and /or that the corner points mentioned in lines 3, 4 and 5 above were in conformance with the rules of the Michigan Board of Land Surveyors or by a Decree of a Court of Law; established, re-established, monumented, recovered, found as expressed below:

NOTE: Not more than 2 corners, all in the same town and range, may be recorded on this certificate.

*THIS LCRC SUPERSEDES LCRC RECORDED IN LIBER 8 PAGE 471 (CORNER WAS REMONUMENTED IN INCORRECT POSITION)

A. Description of original monument and accessories and/or subsequent restoration:

1. JOSEPH WAMPLER, DEPUTY SURVEYOR, SET POST IN ORIGINAL GOVERNMENT SURVEY IN DECEMBER 1825: INT N BDY 20 LKS (13.20') W OF POST - SET POST COR 4 & 5 FW: ASH 6, S20E, 23; ASH 9, S30E, 31

2. A. JACKSON, COUNTY SURVEYOR, USED CORNER IN A SURVEY RECORDED IN COUNTY SURVEYOR'S NOTES VOLUME 1 PAGE 176 IN MAY 1845 USING WAMPLER'S WITNESSES

CONTINUED ON REVERSE

B. Description of corner evidence found and/or method applied in restoring or reestablishing corner:

WHILE RETRACING NORTH LINE OF T3N R2E IN OCTOBER 2006 TO DETERMINE LOCATIONS OF B-1, C-1 AND D-1, DISCOVERED THAT E-1 T3N R2E AS REMONUMENTED IN LIBER 8 PAGE 471 IN 1995 AND E-13 T4N R2E AS REMONUMENTED IN LIBER 8 PAGE 473 IN 1995 WERE ABOUT 75' NORTH OF THE TOWNSHIP LINE. RETURNED IN OCTOBER 2007 AND RETRACED R J ROBB'S SURVEY OF SECTION 4 LEROY AND RECOVERED STONE HE SET AT THE SUPPOSED 1/16 CORNER BETWEEN E-1 AND F-1. (ROBB SUPPOSEDLY USED E-1 AND F-1 TO SET 1/16 CORNER, BUT I BELIEVE HE USED E-13 AND F-13 OF LOCKE TOWNSHIP BECAUSE STONE IS IN A FENCE TO THE NORTH WHICH IS OBVIOUSLY AT THE SOUTH 1/16 CORNER OF THE SW 1/4 SECTION 33 OF LOCKE TOWNSHIP). MEASURED 1323.67' FROM STONE TO F-13 LOCKE TOWNSHIP. PROJECTED LINE FROM F-13 THROUGH FOUND STONE 1323.67' WEST OF STONE AND SET E-13 LOCKE. SET E-1 LEROY 13.20' TO WEST ON LINE E13 - D13. E-13 LIES 3' EAST OF EAST EDGE BITUMINOUS SURFACE OF DIETZ ROAD. E-1 LIES 1' EAST OF CENTERLINE DIETZ ROAD. DID NOT EXCAVATE BECAUSE OF APPROXIMATELY 7' OF FILL ON DIETZ ROAD. MEASURED EAST 2657.24' TO F-1. MEASURED WEST 2662.80' TO D-1. MEASURED SOUTH 1786.49' SOUTH TO E-2. MEASURED SOUTH 4447.32' TO E-3.

C. Description of monument for corner and accessories established to perpetuate locating the position of the corner:

3/4" X 24" BAR WITH INGHAM COUNTY PA 345 2 1/4" ALUMINUM CAP STAMPED 25837

NAIL & INGHAM WITNESS TAG NE SIDE 42" MAPLE

NAIL & INGHAM WITNESS TAG NORTH SIDE 36" MAPLE

NAIL & INGHAM WITNESS TAG NORTH SIDE 38" MAPLE

SE COR/SE COR CONCRETE BRIDGE GUARDRAIL

SW COR/SW COR CONCRETE BRIDGE GUARDRAIL

3/4" BAR & YELLOW PLASTIC PA 345 CAP IN MONUMENT BOX (E-1 T3NR2E AS RECORDED L-8, P-471)

3/4" BAR & YELLOW PLASTIC PA 345 CAP IN MONUMENT BOX (E-13 T4NR2E AS RECORDED L-8, P-473)

3/4" BAR AND INGHAM COUNTY PA 345 CAP (E-13 T4N R2E)

N44°W	37.32'
S81°W	26.17'
S45°W	36.03'
N01°E	240.51'
N06°W	256.08'
N11°W	77.21'
N02°W	75.22'
EAST	13.20'

PROPERTY CONTROLLING CORNER (E-1 T3N R2E AS RECORDED LIBER 8 PAGE 471)

3/4" X 24" BAR WITH INGHAM COUNTY PA 345 YELLOW PLASTIC CAP STAMPED 30090 IN MONUMENT BOX

NAIL & INGHAM WITNESS TAG NE SIDE 42" MAPLE

NAIL & INGHAM WITNESS TAG NORTH SIDE 36" MAPLE

NAIL & INGHAM WITNESS TAG NORTH SIDE 38" MAPLE

SE CORNER OF SE CONCRETE BRIDGE GUARDRAIL

SW CORNER OF SW CONCRETE BRIDGE GUARDRAIL

3/4" BAR & YELLOW PLASTIC PA 345 CAP IN MONUMENT BOX (E-13 T4N R2E AS RECORDED L-8, P-473)

3/4" BAR AND INGHAM COUNTY PA 345 CAP STAMPED 25837 (E-13 T4N R2E)

3/4" BAR AND INGHAM COUNTY PA 345 CAP STAMPED 25837 IN MONUMENT BOX (E-1 T4N R2E)

S12°W	49.94'
S08°W	80.27'
S06°W	101.83'
N06°E	165.76'
N04°W	179.33'
EAST	13.13'
S21°E	81.30'
S02°E	77.21'

Signed by David L. Clifford

Date NOVEMBER 26, 2007

Surveyor's Michigan License No. 25837

CONTINUED FROM FRONT OF FORM

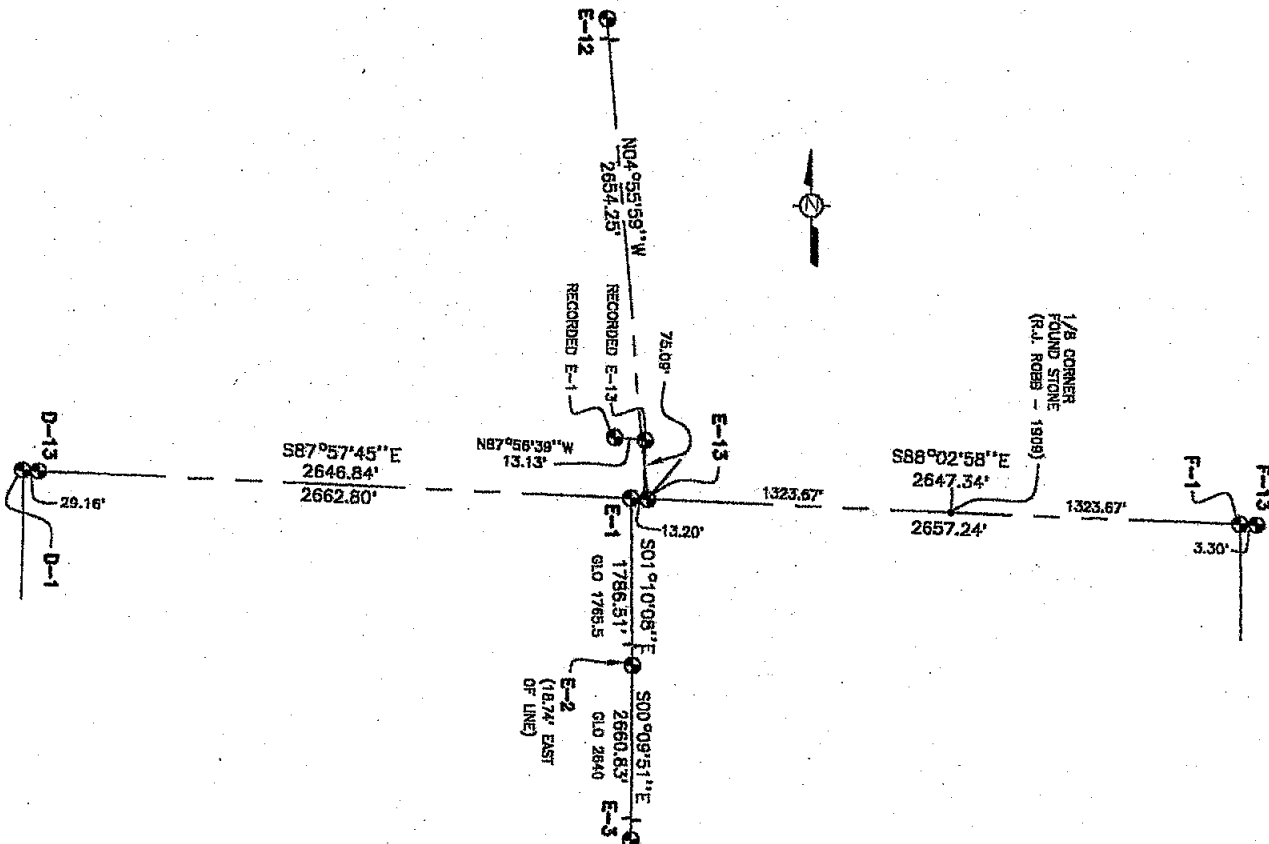
3. R.J. ROBB, COUNTY SURVEYOR, USED CORNER IN A SURVEY RECORDED IN VOLUME 3 PAGE 217 IN NOVEMBER 1908 AS A STONE: H. MAPLE 16", S58°E, 56 LKS: S. MAPLE 15", S89°W, 35 LKS. MEASUREMENTS: 20 CHAINS (1320') EAST TO STONE & IRON AT 1/16 CORNER; 40 CHAINS (2640') EAST TO F-1; 27.17 CHAINS (1793.2') SOUTH TO E-2; 66.88 CHAINS (4414.1') SOUTH TO E-3.

4. DOUGLAS HOOTH, RLS 7986, RECORDED CORNER E-13, T4NR2E, LOCKE TOWNSHIP UNDER ACT 74 IN LIBER 3 PAGE 543 ON MARCH 10, 1976: FOUND T-IRON IN C/L DIETZ RD. ON FENCE LINE TO THE WEST AND NOTED TO BE THE SECTION CORNER IN THE INGHAM CO. ROAD COMM. ROAD SURVEY: T-IRON, 40" MAPLE (PK S SIDE), S20°W, 56.21'; 38" MAPLE (PK N SIDE), S85°W, 27.14'; 23" MAPLE (PK S SIDE), N45°E, 46.69'

5. RONNIE LESTER, RLS 17624, RECORDED CORNER E-13, T4NR2E, LOCKE TOWNSHIP, UNDER ACT 74 IN LIBER 6 PAGE 83 ON AUGUST 27, 1980: EXCAVATED A 6' X 8' HOLE TO AN AVERAGE DEPTH OF 3.8' ON THE CENTERLINE OF DIETZ ROAD AND ON FENCE LINE WEST. FOUND L-ANGLE WITH 3/4" IRON BAR INSIDE +/- .5' EAST OF CENTERLINE OF DIETZ ROAD ON FENCE LINE WEST. ACCEPTED 3/4" IRON BAR FOR CORNER. EXCAVATION CONDUCTED BY INGHAM COUNTY SURVEY AND REMONUMENTATION PROJECT CREW. SET 4" X 36" CONCRETE MONUMENT WITH 1/2" X 38" REROD AND CAP #18998 IN SAME LOCATION AS CORNER RECORDED IN L. 3, P. 543, 1976; NAIL & TAG #18998 SOUTH SIDE 36" MAPLE, SW, 56.26'; NAIL & TAG #18998 NORTH SIDE 36" MAPLE, SW, 27.14'; NAIL & TAG #18998 SOUTHEAST SIDE 30" MAPLE, NE, 46.88'; NAIL & TAG #18998 EAST SIDE 36" MAPLE, SW, 84.44'

6. DOUGLAS RICHARDSON, PS #31603, USED E-13 T4N R2E IN AN ACT 132 SURVEY RECORDED IN LIBER 5, PAGE 552 ON MARCH 18, 1988: NO REFERENCE TO MONUMENT BUT SHOWS THAT AN IRON WAS SET ALONG WEST RIGHT-OF-WAY OF DIETZ ROAD 33 FEET WEST OF E-13

7. DAVID LOHR, PS 30090, RECORDED CORNER E-1, T3NR2E, LEROY TOWNSHIP UNDER ACT 74 IN LIBER 8 PAGE 471 ON OCTOBER 24, 1995: PART B READS "SEARCHED AT APPARENT LOCATION OF CORNER AND FOUND NO EVIDENCE OF PREVIOUS EXCAVATIONS FROM REMON PROGRAM OF 1978-80. CORNER WAS NOT SET DURING PREVIOUS REMON PROGRAM, HOWEVER E-13, LOCKE TOWNSHIP WAS ALSO EXCAVATED AND 4" CONCRETE MONUMENT WAS SET IN 1980. ALL EVIDENCE OF FORMER EXCAVATIONS NO VISIBLE. IT IS PRESUMED THAT ROAD WAS REBUILT SOMETIME SINCE 1988. RE-ESTABLISHED LOCATION OF E-13, LOCKE TOWNSHIP, FROM WITNESS TO NORTH-EAST AND DISTANCE TO PROPERTY CORNER AS SET IN SURVEY RECORDED IN LIBER 5 PAGE 552. SET E-1 LEROY AT RECORD DISTANCE OF 20 LINKS, (13.20'), WEST ON SOUTH LINE OF SURVEY OF LIBER 5 PAGE 552. SET 3/4" X 24" STANDARD REMON. BAR/PA 345 CAP #30090 IN MON BOX, CORNER FALLS ON WEST EDGE OF BITUMINOUS PAVEMENT OF DIETZ ROAD, 3.5 FEET NORTH OF FENCE TO WEST." PART C READS "SET 3/4" X 24" STANDARD REMON. BAR/P.A. 345 CAP #30090 IN MON. BOX ON WEST EDGE OF DIETZ ROAD PAVEMENT, 3.50 FEET NORTH OF FENCELINE TO WEST: FD. N&T 18998 SE/S 24" MAPLE, AZ. 46°, 55.88'; SET N&T 30090 SE/S 28" MAPLE, AZ. 182°, 82.53'; SET N&T 30090 SE/S 40" MAPLE, AZ. 187°, 52.65'; SET N&T 30090 NE/S 18" MAPLE, AZ. 301°, 64.74'; FD. 1/2" IRON/CAP #31603, AZ. 268°, 33.00'



TION

LIBER

8 PAGE

471

FILED

NOV 1 1995

COMMISSION

LAND CORNER RECORDATION CERTIFICATE
Filing Requirement of Act 74, Mich. P.A. 1970

OCT 24 8 41 AM '95

For corners in

INGHAM

Located In:

Corner Code #

LERODY TOWNSHIP

REGISTER OF DEEDS

David R. Lohr

INGHAM COUNTY, MICH.

1. Public Land Survey

T 3N R 2E

E-1

2. Property Controlling
in Section

S T R

3. Miscellaneous
Property in Sec.

S T R

Register of Deeds Stamp & File Number

4. Lot No. , Recorded Plat

5. Private Claims

I, DAVID R. LOHR, in a field survey on 8/22, 1995, do hereby certify that under requirements of P.A. 74, Michigan P.A. of 1970, the corner points mentioned in lines 1 and 2 above were in conformance with regulations and rules therefore as required in the current manual of survey instructions of the United States Department of the Interior, Bureau of Land Management or by a decree of a Court of Law and/or that the corner points mentioned in lines 3, 4 and 5 above were in conformance with the rules of the Michigan Board of Land Surveyors or by a Decree of a Court of Law, established, re-established, monumented, re-monumented, recovered, found as expressed below:

NOTE: Not more than 4 corners, all in the same town and range, may be recorded on this certificate.

A. Description of original monument and accessories and/or subsequent restoration:

- E-1. 1. POST SET BY JOSEPH WAMPLER, DEPUTY SURVEYOR, IN 1825.
"INT. N. BDY 20 LKS W. OF POST, SET POST COR. TO 4 & 5 JW."
POST SET 26.75 CHAINS (1765.50') NORTH OF E-2. WITNESSED BY:
ASH 6" S 20° E, 23 LINKS (15.18')
ASH 9" S 30° E, 31 LINKS (20.46')
2. RECORDED SURVEY BY A. JACKSON, COUNTY SURVEYOR, IN 1845
RECORDED IN VOL. 3, PAGE 50. NO REFERENCE TO MONUMENT,
SAME WITNESSES AS ITEM 1. SHOWS DISTANCE TO D-1 OF 40.42 CH.
(2667.72'). CONTINUED ON BACK

B. Description of corner evidence found and/or method applied in restoring or reestablishing corner:

- E-1: SEARCHED AT APPARENT LOCATION OF CORNER AND FOUND NO EVIDENCE OF PREVIOUS EXCAVATIONS FROM REMON PROGRAM OF 1978-80. CORNER WAS NOT SET DURING PREVIOUS REMON PROGRAM, HOWEVER E-13, LOCKE TOWNSHIP WAS ALSO EXCAVATED AND 4" CONCRETE MONUMENT WAS SET IN 1980. ALL EVIDENCE OF FORMER EXCAVATIONS NOT VISIBLE, IT IS PRESUMED THAT ROAD WAS REBUILT SOMETIME SINCE 1988. RE-ESTABLISHED LOCATION OF E-13, LOCKE TOWNSHIP, FROM WITNESS TO NORTHEAST AND DISTANCE TO PROPERTY CORNER AS SET IN SURVEY RECORDED IN VOL. 5, PAGE 552. SET E-1 LEROY AT RECORD DISTANCE OF 20 LINKS, (13.20 FEET), (ITEM A-1) WEST ON SOUTH LINE OF SURVEY OF LIBER 5, PG. 552 (ITEM H6). SET 3/4" X 24" STANDARD REMON. BAR/CAP #30090 IN MON. BOX. CORNER FALLS ON WEST EDGE OF BITUMINUS PAVEMENT OF DIETZ ROAD, 3.5 FEET NORTH OF FENCE TO WEST. CONTINUED ON BACK

C. Description of monument for corner and accessories established to perpetuate locating the position of the corner:

- E-1. SET 3/4" X 24" STANDARD REMON. BAR/PA 345 CAP #30090 IN MON BOX.
ON WEST EDGE OF DIETZ ROAD PAVEMENT, 3.5 FEET NORTH OF FENCE TO WEST.
WITNESSED BY:
FD. N&T 18998 SE/S 24" MAPLE AZ. 46°, 55.88'
SET N&T 30090 SE/S 28" MAPLE AZ. 182°, 82.53'
SET N&T 30090 SE/S 40" MAPLE AZ. 187°, 52.75'
SET N&T 30090 NE/S 18" MAPLE AZ. 301°, 64.74'
FD 1/2" IRON/CAP #31603, AZ. 268°, 19.80'

Signed by

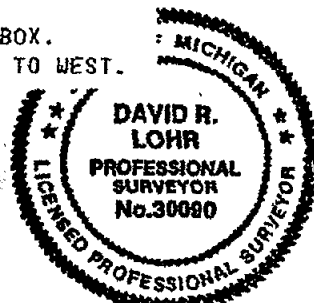
David R. Lohr

Date

10/3/95

Surveyor's Michigan License No.

30090



P.A. 345 INGHAM COUNTY
PEER APPROVED 9/24/95

FORM APPROVED BY MICHIGAN STATE BOARD OF LAND SURVEYORS, JAN. 28, 1971
REVISED MAY 14, 1973
REVISED JAN., 1983

Page 2

E-1: PART A: CONTINUED

3. RECORDED SURVEY BY R.J. ROBB, COUNTY SURVEYOR, IN 1908, RECORDED IN VOL. 3, PAGE 217, SHOWS "STONE" ... FOUND FROM FORMER SURVEYS", WITNESSED BY: S. MAPLE, S 89° W, 35 LKS. (23.10') SHOWS DISTANCE TO E-2 OF 27.17 CH. (1793.22') SHOWS DISTANCE TO F-1 OF 40.00 CH. (2640.00')
4. NO OTHER REFERENCED FOUND IN COUNTY SURVEYORS RECORDS.
5. MULTIPLE EXCAVATIONS OF 1978 BY INGHAM CO. REMON. CREWS AT APPARENT CORNER LOCATION FOUND EIGHT (8) CONFLICTING CORNERS AND DETERMINED CORNER TO BE LOST ON 8/6/80 BY RON LESTER. "CORNER TO BE SET BY TRAVERSING", HOWEVER CORNER WAS NEVER SET DURING THIS REMON. PROGRAM.
6. RECORDED SURVEY BY DOUGLAS K. RICHARDSON, PS #31603, DATED 3/18/88, RECORDED IN LIBER 5, PAGE 552, OF A PARCEL LOCATED IN SECTION 32 OF LOCKE TOWNSHIP. NO REFERENCE TO THIS MONUMENT BUT SHOWS THAT THE CORNER E-13 LOCKE WAS FOUND AND AN IRON WAS SET ALONG WEST RIGHT-OF-WAY OF GIETZ ROAD 33 FEET WEST OF E-13.
7. NO OTHER RECORD FOUND.

2803

NOV 1995

LIBER 8 PAGE 481

FILED

COMMISSION

LAND CORNER RECORDATION CERTIFICATE
Filing Requirement of Act 74, Mich. P.A. 1970

Oct 24 8 43 AM '95

For corners in

INGHAM

(County)

Located in:

Corner Code #

LEROY TOWNSHIP

1. Public Land Survey

T 3N R 2EE-211' T R T R T R 2. Property Controlling
in SectionS T R 3. Miscellaneous
Property in Sec.S T R S T R

REGISTER OF DEEDS

Doris Johnson

INGHAM COUNTY, MICH.

Register of Deeds Stamp & File Number

4. Lot No. , Recorded Plat 5. Private Claims

I, DAVID R. LOHR, in a field survey on AUGUST 22, 19 95, do hereby certify that under requirements of P.A. 74, Michigan P.A. of 1970, the corner points mentioned in lines 1 and 2 above were in conformance with regulations and rules therefore as required in the current manual of survey instructions of the United States Department of the Interior, Bureau of Land Management or by a decree of a Court of Law and/or that the corner points mentioned in lines 3, 4 and 5 above were in conformance with the rules of the Michigan Board of Land Surveyors or by a Decree of a Court of Law; established, re-established, monumented, re-monumented, recovered, found as expressed below:

NOTE: Not more than 4 corners, all in the same town and range, may be recorded on this certificate.

A. Description of original monument and accessories and/or subsequent restoration:

E-2. 1. POST SET BY JOSEPH WAMPLER, DEPUTY SURVEYOR, IN 1825.

"SET 1/4 POST" WITNESSED BY:

BEECH 9" S 78 1/2° E, 10 LINKS (6.60')

BEECH 14" S 88 1/2° W, 4 LINKS (2.64')

CONTINUED ON BACK

B. Description of corner evidence found and/or method applied in restoring or reestablishing corner:

E-2: SEARCHED AT APPARENT LOCATION OF CORNER AND FOUND 5/8" REBAR AS PER LCRC OF LIBER 4, PAGE 250. EXCAVATED 1.5' X 1.5' AREA AROUND CORNER THRU 6" OF BIT, AND 7" OF GRAVEL TO CLEAN WHITE SAND (ORIGINAL GROUND). FOUND 5/8" X 26" REBAR ONLY. EXCAVATED THRU SAND TO DEPTH OF 48", FOUND NOTHING MORE. ACCEPTED LOCATION OF REBAR AND SET 3/4" X 24" STANDARD REMON BAR/PA 345 CAP #30090 IN POSITION OF 5/8" REBAR. IN MONUMENT BOX ON LINE OF FENCE TO EAST.

C. Description of monument for corner and accessories established to perpetuate locating the position of the corner:

E-2. SET 3/4" X 24" STANDARD REMON. BAR/PA 345 CAP #30090 IN MON BOX. ON CENTERLINE OF DIETZ ROAD, ON FENCE TO EAST.

WITNESSED BY:

SET N&T 30090 NW/S 30" OAK AZ. 20°, 70.50'

FD. N&T 29245 NW/S 36" OAK AZ. 48°, 33.00'

SET N&T 30090 S/S 12" OAK AZ. 97°, 39.27'

FD. N&T 29245 SE/S 36" OAK AZ. 227°, 35.37'

Signed by

David R. Lohr

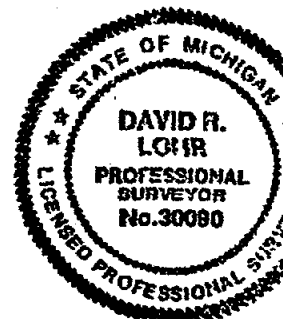
Date

9-22-95Surveyor's Michigan License No. 30090

P.A. 345 INGHAM COUNTY

PEER APPROVED 8/27/95 14FORM APPROVED BY MICHIGAN STATE BOARD OF LAND SURVEYORS, JAN. 21, 19
REVISED MAY 14, 19
REVISED JAN., 19

2808



Page 2

E-2: PART A: CONTINUED

2. RECORDED SURVEY BY A. JACKSON, COUNTY SURVEYOR, IN 1845
RECORDED IN VOL. 3, PAGE 50. NO REFERENCE TO MONUMENT,
WITNESSED BY: BEECH 15", S 69 1/2° W, 8 1/4 LINKS (5.45')
BEECH 12", S 69 1/2° E, 7 1/4 LINKS (4.79')
SHOWS DISTANCE TO E-1 OF 107 RODS, 18 LINKS (1777.38').
SHOWS DISTANCE TO D-2 OF 162 RODS, 7 LINKS (2677.62').
3. RECORDED SURVEY BY R.J. ROBB, COUNTY SURVEYOR, IN 1908, RECORDED IN
VOL. 3, PAGE 217, SHOWS "MOWER- PITMAN-STONE" ... CORNER 15 (E-2) WAS
LOST AND WAS SET ON A TRUE LINE BETWEEN CORNERS 5 (E-1) AND 25 (E-3)".
WITNESSED BY: H. MAPLE, S 40° W, 43 LKS. (28.38')
H. MAPLE, S 86° W, 17 LKS. (11.22')
H. MAPLE, N 43° W, 38 LKS. (25.08')
SHOWS DISTANCE TO E-1 OF 27.37 CH. (1806.42')
SHOWS DISTANCE TO F-2 OF 40.13 CH. (2648.58')
SHOWS DISTANCE TO E-3 OF 39.71 CH. (2620.86')
4. NO OTHER REFERENCED FOUND IN COUNTY SURVEYORS RECORDS.
5. LCRC BY ROBERT W. CRAMPTON, PS #24591, DATED JULY 6, 1978, RECORDED
IN LIBER 4, PAGE 250. "ORIGINAL MONUMENT AND ACCESSORIES WERE NOT FOUND,
A 5/8" IRON ROD WAS FOUND IN THE CENTER OF DIETZ ROAD".
"THE 5/8" IRON ROD WAS LEFT IN POSITION WITH THE FOLLOWING WITNESSES".
N&T W/S 45" MAPLE N 30°12'W, 57.12'
PK NAIL W/S 40" MAPLE N 39°48'E, 32.91'
N&T S/S 40" MAPLE N 89°48'E, 24.75'
6. CORNER REFERRED TO IN SURVEY BY MARVIN FOUTY, PS #18989, DATED 7/5/78,
RECORDED IN LIBER 3, PAGE 557, "FOUND 5/8" IRON BAR".
WITNESSED BY TAGS IN: SW/S 30" MAPLE EAST, 24.71'
SE/S 30" MAPLE SW, 35.47'
PK NAIL IN NW SIDE 30" MAPLE NE, 32.92'
SHOWS DISTANCE TO E-3 OF 2718.98'
7. CORNER REFERRED TO IN SURVEY BY MARVIN FOUTY, PS #18989, DATED 7/3/78,
RECORDED IN LIBER 3, PAGE 564, "FOUND 5/8" IRON BAR".
WITNESSES: TAGS IN: SW/S 30" MAPLE EAST, 24.71'
SE/S 30" MAPLE SW, 35.47'
PK NAIL IN NW SIDE 30" MAPLE NE, 32.92'
8. CORNER REFERRED TO IN SURVEY BY JAMES STEPHENS, PS #16053, DATED 10/23/78
RECORDED IN LIBER 3, PAGE 653, "5/8" IRON ROD". WITNESSED BY:
N&T 45" MAPLE N 30°12'W, 57.12'
PK NAIL 40" MAPLE N 39°48'E, 32.91'
N&T 40" MAPLE N 89°48'E, 24.75'
9. CORNER REFERRED TO IN SURVEY BY JAMES STEPHENS, PS #16053, DATED 10/23/78
RECORDED IN LIBER 3, PAGE 656, "5/8" IRON BAR". WITNESSED BY:
N&T 45" MAPLE N 30°12'W, 57.12'
PK NAIL 40" MAPLE N 39°48'E, 32.91'
N&T 40" MAPLE N 89°48'E, 24.75'

2808

REMONUMENTATION

DEC 16 1996

COMMISSION

LAND CORNER RECORDATION CERTIFICATE

Filing Requirement of Act 74, Mich. P.A. 1970

Liber

9 Page

29

For corners in

INGHAM

(County)

Located in:

Corner Code #

LEROY TOWNSHIP

1. Public Land Survey

T 3N R 2EE-3

T R

T R

T R

T R

2. Property Controlling
in Section

S T R

S T R

3. Miscellaneous

S T R

Property in Section

S T R

4. Lot No. _____, Recorded Plat _____

5. Private Claims _____

FILED

960038963

10/09/1996 15:10:06

REGISTER OF DEEDS

Paula Johnson

INGHAM COUNTY, MI

Register of Deeds Stamp & File Number

I, DAVID R. LOHR, in a field survey on 8/21/95 & 9/15/95 & 8/12/96 do hereby certify that under requirements of P.A. 74, Michigan P.A. of 1970, the corner points mentioned in lines 1 and 2 above were in conformance with regulations and rules therefore as required in the current manual of survey instructions of the United States Department of the Interior, Bureau of Land Management or by a decree of a Court of Law and/or that the corner points mentioned in lines 3, 4 and 5 above were in conformance with the rules of the Michigan Board of Professional Surveyors or by a Decree of a Court of Law; established, re-established, monumented, re-monumented, recovered, found as expressed below:

NOTE: Not more than 4 corners, all in the same town and range, may be recorded on this certificate.

A. Description of original monument and accessories and/or subsequent restoration:

E-3. 1. POST SET BY JOSEPH WAMPLER, DEPUTY SURVEYOR, IN 1825,
"SET 1/4 POST" WITNESSED BY:

BEECH 12" S 23 1/2 E, 15 LINKS (9.90')

BEECH 23" N 10 W, 8 1/2 LINKS (5.61')

2. RECORDED SURVEY BY R.J. ROBB, COUNTY SURVEYOR, IN 1908,
RECORDED IN VOL. 3, PAGE 217, SHOWS "STONE... FOUND FROM
FORMER SURVEYS". WITNESSED BY:

H. MAPLE 16" S 50 E, 56 LKS. (36.96')

ELM 16" S 45 E, 51 LKS. (33.66')

B. Description of corner evidence found and/or methods applied in restoring or reestablishing corner:

E-3: SEARCHED AT APPARENT LOCATION OF CORNER AND FOUND R.R. SPIKE AS PER LCRC OF LIBER 1, PAGE 127. EXCAVATED 1.5' X 2.5' AREA AROUND CORNER THRU 3" OF BIT. AND 12" OF GRAVEL TO OLD BIT SURFACE. EXCAVATED THRU ANOTHER 6" OF BIT. TO TOTAL DEPTH OF 48" TO UNDISTURBED CLAY (ORIGINAL GROUND). FOUND NOTHING MORE. ALL WITNESSES OF ITEMS #4, #5 AND #6 ARE GONE. LOCATED APPROXIMATE LOCATION OF STONE/PIPE OF ITEM #4 BY MEASURING RECORDED ANGLE AND DISTANCE FROM MDOT ROW PLANS AT E-4. THIS LOCATION FALLS 2.5 FT. SOUTH X 2.0 FT. WEST OF R.R. SPIKE. UPDATE 8-12-96, EXCAVATED 2.0' X 2.0' HOLE AT SUSPECTED MDOT LOCATION AND FOUND 1" PIPE AS PER ITEM #4. PIPE WAS FOUND AT DEPTH OF 16" ON OLD PAINTED CENTERLINE. PIPE FALLS 2.45 FT. WEST X 2.00 FT. SOUTH OF R.R. SPIKE LOCATION. (CONTINUED ON PAGE 4)

C. Description of monument for corner and accessories established to perpetuate locating the position of the corner:

E-3. SET 3/4" X 24" STANDARD REMON. BAR/PA #345 CAP #30090 IN MON BOX, 2.5' WEST C/L OF DIETZ ROAD, AND 2.0' SOUTH C/L LINN ROAD.

WITNESSED BY:

FD. N&T #25832 S/S STUB POLE AZ. 51 DEG., 43.76'

NE CORNER FOUNDATION HSE. #2995 AZ. 226 DEG., 85.38'

SET N&T #30090 N/S 30" BOX ELDER AZ. 251 DEG., 103.18'

FD. N&T #25832 S/S 19" BOX ELDER AZ. 295 DEG., 105.62'

FD. N&T #25832 E/S 14" BOX ELDER AZ. 338 DEG., 144.29'

1/2" IRON/MON. BOX AZ. 49 DEG., 3.00'

Signed by

David R. Lohr

Date

8-22-96Surveyor's Michigan License No. 30090

FILED

FORM APPROVED BY MICHIGAN STATE BOARD OF PROFESSIONAL SURVEYORS, JAN. 28, 1971
REVISED MAY 14, 1975
REVISED JAN., 1983

P.A. 345 INGHAM COUNTY

RECORDED 8/21/96 17.

E-3: LEROY TOWNSHIP, PART A: CONTINUED:

3. NO OTHER REFERENCED FOUND IN COUNTY SURVEYORS RECORDS.

4. MDOT WITNESS CARD BY HARRY JOHNSON, SURVEY CHIEF, NO DATED GIVEN, (CIRCA...1967) STATES: "FOUND STONE...1" IRON PIPE TO SURFACE", WITNESSED BY:

30" MAPLE - S 10 W -	88.30'	(GONE)
35" ELM - S 44 W -	32.64'	(GONE)
26" MAPLE - N 10 E -	98.59'	(GONE)

5. MDOT CONSTRUCTION PLANS, PROJECT #33084, DATED 10/20/60, SHEET #3 OF 12 SHOWS ANGLE MEASURED AT E-4 AND A DISTANCE MEASURED NORTH TO THIS CORNER OF 2694.82 FT. WITH SAME WITNESSES AS ABOVE.

6. NOTATION FROM INGHAM COUNTY ROAD COMMISSION GRID MAP, DATE UNKNOWN, SHOWS 1" PIPE, WITNESSED BY:

30" MAPLE, S 10 W,	88.03'	(GONE)
35" ELM, S 44 E,	32.64'	(GONE)
26" MAPLE, N 10 E,	98.59'	(GONE)

7. LCRC BY CLYDE STEPHENS, PS #3829, DATED JULY 28, 1971, RECORDED IN LIBER 1, PAGE 127. "THE ORIGINAL MONUMENT NOT FOUND... A RAILROAD SPIKE SET IN THE CENTERLINE OF THE TWO SECTION LINE ROADS (LINN ROAD AND DIETZ ROAD)... THE RAILROAD SPIKE SET AT THE SE CORNER OF SECTION 5 WAS WITNESSED WITH THE FOLLOWING".

SURVEY TAG IN A UTILITY POLE N 45-37' W, 50.55'
NE CORNER OF A 2 STORY HOUSE S 45-45' W, 88.3'
SURVEY TAG IN A UTILITY POLE S 18-31' W, 164.50'

8. CORNER REFERRED TO IN SURVEY BY CLYDE STEPHENS, PS #3829, DATED 7/22/71, RECORDED IN LIBER 1, PAGE 46, "RAILROAD SPIKE", SAME WITNESSES AS ITEM 6.

9. CORNER REFERRED TO IN SURVEY BY CLYDE STEPHENS, PS #3829, DATED 9/21/71, RECORDED IN LIBER 1, PAGE 136, REFERS TO CORNER AS DESCRIBED IN LIBER 1, PAGE 127.

10. CORNER REFERRED TO IN SURVEY BY AUSTIN C. WILLIAMS, PS #21275, DATED 10/3/79, RECORDED IN LIBER 3, PAGE 118, REFERS TO LIBER 1, PAGE 127.

11. CORNER REFERRED TO IN SURVEY BY MARVIN FOUTY, PS #18989, DATED 7/5/78, RECORDED IN LIBER 3, PAGE 557, "RR SPIKE CENTERLINE OF DIETZ ROAD". WITNESSES: TAGS IN:

UTILITY POLE	NW, 50.55'
UTILITY POLE	SW, 164.50'
NE CORNER HOUSE FOUNDATION	SW, 88.3'

INGHAM COUNTY MI
REGISTERED DEED
10/02/1980 12:10:00
RECORDED

FILED 2-588 52