

LAND CORNER RECORDATION CERTIFICATE  
Filing Requirement of Act 74, Mich. P.A. 1970

For corners in

INGHAM  
(County)  
ONONDAGA TOWNSHIP

Located in:

Corner Code #

1. Public Land Survey

T 1N R 2W

M 11

2. Property Controlling  
in Section

S T R

3. Miscellaneous  
Property in Sec.

S T R

Paula Johnson  
INGHAM COUNTY  
REGISTER OF DEEDS  
OFFICIAL SEAL



L-11 P-213

CRNR 14.00

2004-060540

2004-060540

Page: 1 of 1

09/23/2004 10:36 A

Register of Deeds Stamp & File Number

4. Lot No. , Recorded Plat

5. Private Claims

I, **DAVID L. CLIFFORD**, in a field survey on **JUNE 16, 2004** do hereby state that under requirements of P.A. 74, Michigan P.A. of 1970, the corner points mentioned in lines 1 and 2 above were in conformance with regulations and rules therefore as required in the current manual of survey instructions of the United States Department of the Interior, Bureau of Land Management or by a decree of a Court of Law and/or that the corner points mentioned in lines 3, 4 and 5 above were in conformance with the rules of the Michigan Board of Land Surveyors or by a Decree of a Court of Law, established, re-established, monumented, recovered, found as expressed below:

NOTE: Not more than 2 corners, all in the same town and range, may be recorded on this certificate.

	A	B	C	D	E	F	G	H	I	J	K	L	M
1													
2	6		5		4		3		2		1		
3													
4	7		8		9		10		11		12		
5													
6	18		17		16		15		14		13		
7													
8	19		20		21		22		23		24		
9													
10	30		29		28		27		26		25		
11													
12	31		32		33		34		35		36		
13													

A. Description of original monument and accessories and/or subsequent restoration:

1. ORIGINAL POST SET BY J. WAMPLER, DEPUTY SURVEYOR IN MAY, 1825;  
W. OAK 15', S14W, 111 LKS; R. OAK 12', N52W, 224 LKS

2. A. JACKSON, COUNTY SURVEYOR, APPARENTLY USED CORNER IN A SURVEY RECORDED IN VOL.1 PAGE 17 IN OCT., 1839 WITH NO MENTION OF MONUMENT OR WITNESSES.

3. FRED WHITE, RLS 12034 RECORDED CORNER IN LIBER 2 PAGE 207 IN NOV. 1972 AS A FOUND 1/4" IRON ROD. VERIFIED BY ADJOINING CORNERS & PROPERTY LINES: ANCHOR POST, NORTH, 26.54'; ANCHOR POST, SOUTH, 27.12'; TELEPHONE POLE, S03°W, 29.54'

4. MAYNARD DYER RLS 21565, RECORDED A-11, T1N R1W IN LIBER 3 PAGE 623 IN OCT. 1976 AS THE SAME MONUMENT AS WAS RECORDED FOR M-11 T1N R2W IN LIBER 2 PAGE 207 WITH THE SAME ANCHOR POST WITNESSES AS ITEM 3 ABOVE AND A THIRD WITNESS OF NAIL & TAG SE SIDE TWIN 8" WILD CHERRY, NE, 27.40'

5. RON ENGER, LLS #28409, USED CORNER IN AN ACT 132 SURVEY RECORDED IN LIBER 7 PAGES 516-526 IN JUNE 1997 WITH NO MENTION OF MONUMENT OR WITNESSES.

B. Description of corner evidence found and/or method applied in restoring or reestablishing corner:

TRAVERSED ALL OF SECTION 36, T1N, R2W IN MAY 1997 AND WAS CONVINCED THAT MONUMENT AS RECORDED FOR M-11, T1N, R2W IN LIBER 2 PAGE 207 WAS INDEED THE CORNER FOR SECTIONS 25 AND 36 T1N R2W BECAUSE OF ITS RELATIONSHIP TO ADJACENT CORNERS AND OCCUPATION. IT APPEARS THAT THE FOUND MONUMENTATION MAY ALSO BE THE CORNER TO SECTIONS 30 AND 31, T1N, R1W REGARDLESS OF WHAT THE GLO FALLING WAS SUPPOSED TO BE. EXCAVATED 18" DIAMETER HOLE 3 FEET DEEP ON JUNE 16, 2004 AND ONLY FOUND CLEAN FILL SAND. ACCEPTED FOUND MONUMENTATION AS BEST AVAILABLE EVIDENCE OF LOCATION OF CORNER AND REPLACED IT WITH STANDARD BAR & CAP AND MONUMENT BOX. MEASURED WEST 2623.40' TO L-11. MEASURED SOUTH 2639.85 FEET TO M-12. MEASUREMENTS ARE FROM ENGER SURVEYING JOB CITED IN ITEM 5 ABOVE.

C. Description of monument for corner and accessories established to perpetuate locating the position of the corner:

3/4" X 24" STEEL BAR WITH 2 1/2" ALUMINUM CAP STAMPED INGHAM COUNTY PA 345 PS 25837 IN MONUMENT BOX

NAIL & KEBS TAG WEST SIDE 12" TWIN CHERRY	N40°E	27.60'
NAIL & TAG 25837 EAST SIDE 8" QUAD CHERRY	S05°E	30.61'
NAIL & CPCO TAG WEST SIDE RR TIE FENCE POST	S05°W	27.15'
NAIL & TAG 25837 NORTH SIDE 8" HICKORY	S75°W	78.30'
NAIL & KEBS TAG NE SIDE 6" SPRUCE	N50°W	54.22'

Signed by David L. Clifford  
Surveyor's Michigan License No. 25837

Date AUGUST 25, 2004

P.A. 345 INGHAM COUNTY

PEER APPROVED 8/31/2004 AL



FORM APPROVED BY MICHIGAN STATE BOARD OF PROFESSIONAL SURVEYORS, JAN. 28, 1971  
REVISED MAY 14, 1975  
REVISED JAN. 1993

LAND CORNER RECORDATION CERTIFICATE  
Filing Requirement of Act 74, Mich. P.A. 1970

For Corners in  
INGHAM  
(county)

Located In:

Corner Code #

1. Public Land Survey  
CORNER COMMON  
TO SECTIONS 19 & 30  
LESLIE TOWNSHIP  
ON RANGE LINE

T 1N R 1W

A-09

Paula Johnson-  
INGHAM COUNTY  
REGISTER OF DEEDS  
OFFICIAL SEAL



L-11 P-237

CRNR 14.00

2004-062681

2. Property Controlling  
in Section S      T      R       
S      T      R     



2004-062681

Page: 1 of 1  
10/05/2004 08:11 A

Register of Deeds Stamp & File Number

3. Miscellaneous S      T      R     

4. Lot No         , Recorded Plat                     

5. Private Claims   

I, Brian Reynolds, in a field survey on JULY 14, 2004, do hereby certify that under requirements of P.A. 74, Michigan P.A. of 1970, the corner points mentioned in lines 1 and 2 above were in conformance with regulations and rules therefore as required in the current manual of survey instructions of the United States Department of the Interior, Bureau of Land Management or by a decree of a Court of Law and/or that the corner points mentioned in lines 3, 4, and 5 above were in conformance with the rules of the Michigan Board of Land Surveyors or by a Decree of a Court of Law; established, re-established, monumented, re-monumented, recovered, found as expressed below.

NOTE: Not more than 2 corners, all in the same town and range, may be recorded on this certificate.

A. Description of original monument and accessories and/or subsequent restoration:

1. GENERAL LAND OFFICE DEPUTY SURVEYOR HERVEY PARKE, 1826, "79.66 INT. WEST BOUND'Y 5 S OF POST Y. OAK 30 S9E 56-1/2 ELM 9 N11E 8
2. NOTHING ON ROAD COMMISSION WITNESS MAP
3. SURVEY OF SEVERAL PARCELS IN SECTION 30 BY COUNTY SURVEYOR A. JACKSON, DATED APRIL 17, 1845, VOLUME 1, PAGE 13. SUBJECT CORNER WITNESSED BY "Y OAK 30 S9E 56-1/2 LKS ELM 9 N11E 8 LKS," BUT NO MONUMENT RECITED. A DISTANCE TO 1/8 CORNER EAST IS SHOWN AS "79R 10"
4. LAND CORNER RECORDATION CERTIFICATE LIBER 3, PAGE 623 BY MAYNARD R. DYER, P.S. No. 21565, RECORDED OCTOBER 7, 1976, PART A: "A-9 NORTHWEST CORNER, SECTION 30, T1N, R1W. ORIGINAL MONUMENT AND ACCESSORIES OBLITERATED" PART B: SET 1/2" BAR AND CAP G.L.O. FALLING OF 3.30' SOUTH OF RECORDED CORNER AT NORTHEAST CORNER OF SECTION 25, T1N R2W, ONONDAGA TOWNSHIP. PART C: NORTHWEST CORNER OF SECTION 30, T1N, R1W NAIL AND TAG IN SOUTH SIDE OF 24" MAPLE, W.N.W., 89.59' FOUND NAIL AND TAG IN NORTH SIDE OF 30" MAPLE, E.S.E., 87.92' NAIL AND TAG IN SOUTH SIDE OF 12" ASH, E.N.E., 109.09'
5. ACT 132 SURVEY BY WOLVERINE ENGINEERING, SIGNED BY GEORGE M. YOUNG, P.S. 17640, LIBER 3, PAGE 768, RECORDED MAY 5, 1978, PARCEL IN THE SOUTHWEST 1/4 OF SECTION 19, WITNESSES SAME AS LCRC LIBER 3 PAGE 623.

	A	B	C	D	E	F	G	H	I	J	K	L	M
1													
2	6		5		4		3		2		1		
3													
4	7		8		9		10		11		12		
5													
6	18		17		16		15		14		13		
7													
8	19		20		21		22		23		24		
9													
10	30		29		28		27		26		25		
11													
12	31		32		33		34		35		36		
13													

B. Description of corner evidence found and/or method applied in restoring or reestablishing corner:

FOUND 1/2" IRON 3.28 FEET SOUTH OF PREVIOUSLY REMONUMENTED ONONDAGA CORNER. EXCAVATED 2' X 2' HOLE TO A DEPTH OF 3.5 FEET, THEN PROBED FURTHER, FOUND NO EVIDENCE OF PREVIOUS MONUMENTATION. ACCEPTED FOUND IRON AS BEST AVAILABLE EVIDENCE OF CORNER POSITION. REPLACED FOUND IRON WITH STANDARD MONUMENT AND CAP, INSTALLED MONUMENT BOX. TRAVERSE CONFIRMED THAT FOUND IRON WAS ON RANGE LINE AS DEFINED BY STANDARD CORNERS.

C. Description of monument for corner and accessories established to perpetuate locating the position of the corner:

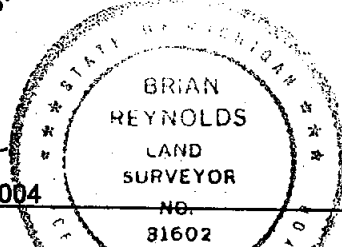
WITNESSES TO 3/4" X 24" STEEL FORM PIN WITH ALUMINUM CAP STAMPED "31602"  
SET NAIL AND TAG No. 31602 IN THE SOUTH SIDE OF 30" ASH NAZ 70° 108.96'  
FOUND NAIL IN THE NORTH SIDE OF 60" MAPLE NAZ 107° 87.68'  
FOUND NAIL AND TAG No. 25832 (LARRY BRYAN, P.S.) IN THE EAST SIDE OF 30" MAPLE NAZ 331° 56.02'  
FOUND NAIL AND WASHER IN THE EAST SIDE OF 30" MAPLE NAZ 331° 55.64'  
FOUND NAIL AND TAG No. 31602 IN THE SOUTH SIDE OF 36" MAPLE NAZ 297° 69.06'  
B-09 IS N89°52'30"E 2628.87' A-10 IS S00°01'17"E 2638.13'

Signed by

P.A. 345 INGHAM COUNTY  
PEER APPROVED 8/31/2004

Date August 30, 2004

Surveyor's Michigan License No 31602



LAND CORNER RECORDATION CERTIFICATE  
Filing Requirement of Act 74, Mich. P.A. 1970

For Corners in  
**INGHAM**  
(county)

Located In:

Corner Code #

1. Public Land Survey  
1/4 CORNER COMMON  
TO SECTIONS 30 & 31  
LESLIE TOWNSHIP

T 1N R 1W  
T \_\_\_\_\_ R \_\_\_\_\_  
T \_\_\_\_\_ R \_\_\_\_\_  
T \_\_\_\_\_ R \_\_\_\_\_

B-11

Paula Johnson-  
INGHAM COUNTY  
REGISTER OF DEEDS  
OFFICIAL SEAL



L-11 P-238

CRNR 17.00

2004-062682



2004-062682

Page: 1 of 2

10/05/2004 08:11 A

2. Property Controlling  
in Section S \_\_\_\_\_ T \_\_\_\_\_ R \_\_\_\_\_  
S \_\_\_\_\_ T \_\_\_\_\_ R \_\_\_\_\_

Register of Deeds Stamp & File Number

3. Miscellaneous S \_\_\_\_\_ T \_\_\_\_\_ R \_\_\_\_\_

4. Lot No \_\_\_\_\_, Recorded Plat \_\_\_\_\_

5. Private Claims \_\_\_\_\_

I, Brian Reynolds, in a field survey on August 30, 2004, do hereby certify that under requirements of P.A. 74, Michigan P.A. of 1970, the corner points mentioned in lines 1 and 2 above were in conformance with regulations and rules therefore as required in the current manual of survey instructions of the United States Department of the Interior, Bureau of Land Management or by a decree of a Court of Law and/or that the corner points mentioned in lines 3, 4, and 5 above were in conformance with the rules of the Michigan Board of Land Surveyors or by a Decree of a Court of Law; established, re-established, monumented, re-monumented, recovered, found as expressed below.

NOTE: Not more than 2 corners, all in the same town and range, may be recorded on this certificate.

A. Description of original monument and accessories and/or subsequent restoration:

**SEE PAGE TWO FOR HISTORICAL SUMMARY**

B. Description of corner evidence found and/or method applied in restoring or reestablishing corner:

**FOUND IRON BY SURVEYOR DYER. STEEL TRANSMISSION TOWER WITNESSES HAVE BEEN REMOVED, THE TRANSMISSION LINE IS NOW SUPPORTED BY TALL WOODEN POLES.**

**SUBJECT CORNER WAS RESTORED BY SURVEYOR DYER BY SINGLE PROPORTION BETWEEN C-11 AND A-11 WHICH DYER DETERMINED TO BE A COMMON CORNER WITH M-11 T1N R2W, CONTRARY TO THE RECORDS OF THE GENERAL LAND OFFICE SURVEY. THE GLO NOTES INDICATE THAT CLOSING A-11 IS 15.84 FEET NORTH OF STANDARD M-11. BASED ON THE PRESUMPTION THAT THESE CORNERS ARE NOT COMMON, DETERMINED THAT THE TRUE POSITION FOR THE SUBJECT CORNER WOULD BE ABOUT 8 FEET NORTH OF THE POSITION MONUMENTED BY DYER.**

**TRAVERSED THE ENTIRETY OF SECTIONS 30 AND 31, TYING IN OCCUPATION LINES AND CORNERS THAT WOULD APPEAR TO CORRESPOND WITH LINES SURVEYED BY COUNTY SURVEYOR ANSON JACKSON (AND OTHERS) IN BOTH SECTIONS. ATTEMPTED TO ESTABLISH SUBJECT CORNER BY RETRACING THE OLD SURVEYS "FROM THE INSIDE OUT." DOUBLING OVER OCCUPATION FROM THE CENTER OF SECTION 31 WOULD PUT THE SUBJECT CORNER 3.5 FEET SOUTH OF THE POSITION BY DYER. THERE IS NO DIRECT OCCUPATION 1/4 MILE NORTH OF THE SUBJECT CORNER, BUT THERE IS OCCUPATION AT THE CENTER OF THE SOUTHEAST 1/4 OF SECTION 30. EXTRAPOLATING FROM THIS AND DOUBLING OVER FROM TRUE EAST-WEST 1/4 LINE WOULD PLACE THE SUBJECT CORNER ABOUT 12 FEET SOUTH OF THE POSITION BY DYER.**

**AFTER STUDYING THE PATTERN OF OCCUPATION THROUGHOUT SECTIONS 30 AND 31, I CONCLUDE THAT THERE MOST LIKELY HAS NEVER BEEN A SUBDIVISION SURVEY OF EITHER SECTION THAT USED A POINT 15.84 FEET NORTH OF STANDARD M-11. IT FURTHER APPEARS THAT ALL SUCH SURVEYS HAVE USED A POSITION FOR THE SUBJECT CORNER VERY CLOSE TO THAT MONUMENTED BY SURVEYOR DYER. IT SEEMS PROBABLE THAT COUNTY SURVEYOR ANSON JACKSON ESTABLISHED THE POSITION HE USED FOR THE SUBJECT CORNER BY THE SAME METHOD USED BY DYER, AND THAT SUBSEQUENT SURVEYS HAVE HONORED AND PERPETUATED THAT POSITION. I CONCLUDE THAT SURVEYOR DYER WAS CORRECT IN HIS CONCLUSION THAT A-11 IS A COMMON CORNER BY CONSISTENT USE WITH M-11 T1N R2W, AND THAT THE METHOD USED BY DYER FOR RESTORING THE SUBJECT 1/4 CORNER WAS PROPER.**

**REPLACED FOUND IRON WITH STANDARD MONUMENT AND CAP, AND INSTALLED MONUMENT BOX, AND WITNESSED AS DESCRIBED BELOW.**

C. Description of monument for corner and accessories established to perpetuate locating the position of the corner:

**WITNESSES TO 1/4" X 24" STEEL FORM PIN WITH ALUMINUM CAP STAMPED "31602"**

**FOUND NAIL & TAG No. 25832 (LARRY A. BRYAN, P.S.) IN THE SOUTH SIDE OF A 48" OAK NAZ 291° 68.10'**

**FOUND NAIL & TAG No. 25832 IN THE WEST SIDE OF A UTILITY POLE NAZ 9° 66.30'**

**FOUND NAIL & SHINER IN THE WEST SIDE OF A WOOD POST NORTH 31.64'**

**FOUND NAIL & SHINER IN THE SOUTHEAST SIDE OF A UTILITY POLE NAZ 42° 94.58'**

**CENTER OF NORTH-SOUTH POWER LINES EAST 12'±**

**A-11 IS N89°55'51"W 2636.67' C-11 IS S89°55'51"E 2646.66'**

**B-10 IS N00°04'09"W 2644.04' B-12 IS S00°04'12"W 2645.37'**

Signed by

Surveyor's Michigan License No

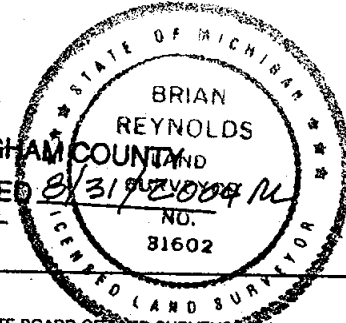
31602

Date August 30, 2004

P.A. 345 INGHAM COUNTY

PEER APPROVED

8/31/2004



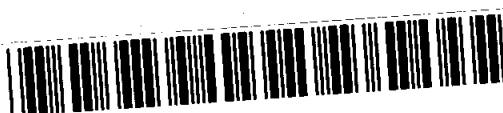
FORM APPROVED BY MICHIGAN STATE BOARD OF LAND SURVEYORS, JAN. 28, 1971

REVISED MAY 14, 1975 REVISED JANUARY, 1983 REVISED OCTOBER 1995

PAGE TWO

A. Description of original monument and accessories and/or subsequent restoration: T1N R1W B-11 CONTINUED

1. GENERAL LAND OFFICE DEPUTY SURVEYOR HERVEY PARKE, 1826,  
IRONWOOD 7 S89E 60 DOUBLE LYNN 24 N82W 66
2. NOTHING ON ROAD COMMISSION WITNESS MAP
3. SURVEY OF TWO PARCELS IN SECTION 30 BY COUNTY SURVEYOR A. JACKSON, DATED MARCH 31, 1845,  
VOLUME 1, PAGE 12. SUBJECT CORNER WITNESSED BY B OAK 10 S3E 94-1/2 LKS B ASH 7 N8E 51 LKS,  
NO MONUMENT RECITED. THE DISTANCE TO C-11 IS SHOWN AS "160R 18 L"
4. SURVEY OF SEVERAL PARCELS IN SECTION 30 BY COUNTY SURVEYOR A. JACKSON, DATED APRIL 17, 1845,  
VOLUME 1, PAGE 13. SUBJECT CORNER IS NOT WITNESSED, NO MONUMENT RECITED. NO DISTANCES TO  
ADJACENT CORNERS.
5. COUNTY SURVEYOR SURVEY BY ANSON JACKSON, DATED FEBRUARY 17, 1848, VOLUME 1, PAGE 216, NO  
MONUMENT RECITED, WITNESSED BY "IRON(WOOD) 7 S89E 60 SYMOR. 24 S84W 66..." JACKSON  
INDICATES A DISTANCE OF "...80R..." (PRESUMABLY 80 RODS = 1320 FEET) TO CORNER WEST, IMPLIES  
DISTANCE OF "...80R17 (PRESUMABLY 80 RODS PLUS 17 LINKS = 1331.22 FEET) TO CORNER SOUTH, SAME  
FROM THERE TO B-12.
6. SURVEY OF SEVERAL PARCELS IN SECTION 31 BY COUNTY SURVEYOR A. JACKSON, DATED AUGUST 25,  
1855, VOLUME 3, PAGE 81. SUBJECT CORNER NECESSARILY WOULD HAVE BEEN USED FOR THIS SURVEY,  
BUT NO MONUMENT OR WITNESSES ARE RECITED. THE DISTANCE FROM B-12 TO 1/8 CORNER MIDWAY TO  
SUBJECT B-11 IS RECITED AS "80R17" (80 RODS 17 LINKS).
7. LAND CORNER RECORDATION CERTIFICATE LIBER 3, PAGE 624 BY MAYNARD R. DYER, P.S. No. 21565,  
RECORDED OCTOBER 7, 1976, PART A: "B-11 ORIGINAL MONUMENT AND ACCESSORIES LOST"  
PART B: SET 1/2" BAR AND CAP G.L.O. PRORATED DISTANCE BETWEEN S.E. AND S.W. CORNER OF SECTION  
30 ON LINE. FALLS ON CENTERLINE OF ROAD ON OLD FENCE NORTH. 2655.40' EAST 2636.82' WEST  
PART C: SOUTH 1/4 CORNER OF SECTION 30, T1N, R1W  
S.W. CORNER OF STEEL TRANSMISSION TOWER, NN.E., 37.14'  
S.E. CORNER OF STEEL TRANSMISSION TOWER, N.E., 42.15'  
NAIL AND TAG IN SOUTH SIDE OF 36" OAK, W.N.W., 68.00'
5. ACT 132 SURVEY BY POLARIS ASSOCIATES, INC., SIGNED BY MAYNARD R. DYER, P.S. 21565, LIBER 2, PAGES  
924-925, RECORDED OCTOBER 7, 1976, DRAWING INDICATES "SET 1/2" BAR & CAP, TEXT ON SECOND PAGE  
RECITES THESE WITNESSES: "SW CORNER TRANSMISSION TOWER, NNE, 26.59'  
SE CORNER TRANSMISSION TOWER, NE, 42.15' NAIL & TAG IN SOUTH SIDE 36" OAK, WNW, 27.40'



2004-062682  
Page: 2 of 2  
10/05/2004 08:11 A

LAND CORNER RECORDATION CERTIFICATE  
Filing Requirement of Act 74, Mich. P.A. 1970

For Corners in  
**INGHAM**  
(county)

Located In:

Corner Code #

1. Public Land Survey  
CORNER COMMON TO  
SECTIONS 19, 20, 29 & 30  
LESLIE TOWNSHIP

T 1N R 1W  
T \_\_\_\_\_ R \_\_\_\_\_  
T \_\_\_\_\_ R \_\_\_\_\_  
T \_\_\_\_\_ R \_\_\_\_\_

C-09

Paula Johnson-  
INGHAM COUNTY  
REGISTER OF DEEDS  
OFFICIAL SEAL



L-11 P-242

CRNR 17.00

2004-062684



2004-062684

Page: 1 of 2  
10/05/2004 08:11 A

2. Property Controlling S \_\_\_\_\_ T \_\_\_\_\_ R \_\_\_\_\_  
in Section S \_\_\_\_\_ T \_\_\_\_\_ R \_\_\_\_\_

Register of Deeds Stamp & File Number

3. Miscellaneous S \_\_\_\_\_ T \_\_\_\_\_ R \_\_\_\_\_

4. Lot No \_\_\_\_\_, Recorded Plat \_\_\_\_\_

5. Private Claims \_\_\_\_\_

I, Brian Reynolds, in a field survey on JULY 14, 2004 do hereby certify that under requirements of P.A. 74, Michigan P.A. of 1970, the corner points mentioned in lines 1 and 2 above were in conformance with regulations and rules therefore as required in the current manual of survey instructions of the United States Department of the Interior, Bureau of Land Management or by a decree of a Court of Law and/or that the corner points mentioned in lines 3, 4, and 5 above were in conformance with the rules of the Michigan Board of Land Surveyors or by a Decree of a Court of Law; established, re-established, monumented, re-monumented, recovered, found as expressed below.

NOTE: Not more than 2 corners, all in the same town and range, may be recorded on this certificate.

A. Description of original monument and accessories and/or subsequent restoration:

SEE PAGE TWO FOR HISTORICAL SUMMARY

B. Description of corner evidence found and/or method applied in restoring or reestablishing corner:

FOUND 5/8" REBAR 10" LONG IN CONCRETE COLLAR AT APPROXIMATE INTERSECTION OF CENTERLINES OF BLACKMORE ROAD AND BELLEVUE HIGHWAY. EXCAVATED, FOUND THAT THE REBAR WAS ABOVE A 4" X 3' CONCRETE MONUMENT. CONTINUED TO DIG WITH FINAL EXCAVATION BEING 2' X 2' X 4' DEEP, THEN PROBED FURTHER, BUT FOUND NO EVIDENCE OF PREVIOUS MONUMENTATION. ACCEPTED FOUND CONCRETE MONUMENT AS BEST AVAILABLE EVIDENCE OF CORNER POSITION. REPLACED WITH STANDARD MONUMENT AND CAP AND INSTALLED MONUMENT BOX.

C. Description of monument for corner and accessories established to perpetuate locating the position of the corner:

WITNESSES TO 3/4" X 24" STEEL FORM PIN WITH ALUMINUM CAP STAMPED "31602"

FOUND NAIL AND TAG No. 28414 IN THE SOUTH SIDE OF A UTILITY POLE NAZ 56° 64.22'

FOUND NAIL AND TAG No. 28414 IN THE NORTHEAST SIDE OF A UTILITY POLE NAZ 136° 71.50'

FOUND NAIL AND TAG No. 28414 IN THE WEST SIDE OF A 24" SPRUCE NAZ 201° 72.84'

FOUND NAIL AND TAG No. 28414 IN THE SOUTH SIDE OF A 30" SPRUCE NAZ 240° 58.76'

FOUND NAIL AND TAG No. 18998 IN THE SOUTHEAST SIDE OF A 6" WOOD FENCE POST NAZ 40° 47.22'

FOUND NAIL AND TAG No. 18998 IN THE EAST SIDE OF A UTILITY POLE NAZ 138° 70.70'

B-09 IS N89°54'01"W 2661.99'

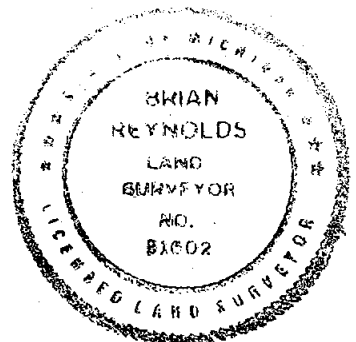
C-10 IS S00°02'06"W 2652.07'

	A	B	C	D	E	F	G	H	I	J	K	L	M
1													
2	6		5		4		3		2		1		
3													
4	7		8		9		10		11		12		
5													
6	18		17		16		15		14		13		
7													
8	19		20		21		22		23		24		
9													
10	30		29		28		27		26		25		
11													
12	31		32		33		34		35		36		
13													

Signed by

Date August 30, 2004

Surveyor's Michigan License No 31602



FORM APPROVED BY MICHIGAN STATE BOARD OF LAND SURVEYORS. JAN. 28, 1971  
REVISED MAY 14, 1975 REVISED JANUARY, 1983 REVISED OCTOBER 1995

P.A. 345 INGHAM COUNTY  
PEER APPROVED 8/31/2004 *re*

## PAGE TWO

A. Description of original monument and accessories and/or subsequent restoration: T1N R1W C-09 CONTINUED

1. GENERAL LAND OFFICE DEPUTY SURVEYOR HERVEY PARKE, 1826,  
W. OAK 8 N60E 55 Do. 12 S40W 23
2. NOTHING ON ROAD COMMISSION WITNESS MAP
3. SURVEY OF SEVERAL PARCELS IN SECTION 29 BY COUNTY SURVEYOR ANSON JACKSON DATED MARCH 31<sup>ST</sup>, 1845, VOLUME ONE, PAGE 11, NO MENTION OF SUBJECT CORNER NOR APPLICABLE DISTANCES RECITED.
4. SURVEY OF SEVERAL PARCELS IN SECTION 30 BY COUNTY SURVEYOR ANSON JACKSON DATED APRIL 17<sup>TH</sup>, 1845, VOLUME ONE, PAGE 12, NO MENTION OF SUBJECT CORNER NOR APPLICABLE DISTANCES RECITED.
5. SURVEY OF A PARCEL IN SECTION 19 BY COUNTY SURVEYOR ANSON JACKSON DATED NOVEMBER 27<sup>TH</sup>, 1845, NO MENTION OF SUBJECT CORNER NOR DIRECTLY APPLICABLE DISTANCES RECITED. THE EAST-WEST OVERAGE IMPLIES THAT THE DISTANCE TO B-09 WOULD BE ABOUT 30 LINKS LONG.
6. COUNTY SURVEYOR T. J. BROWN, SURVEY OF THE EAST ½ OF THE NORTHEAST ¼ OF SECTION 30 REFERS TO THE CORNER MONUMENT AS "POST FROM WHICH A W, OAK 30" DIAMETER BEARS S42-1/2W 22 LINKS." PLAT SHOWS DISTANCE OF 40.06 CHAINS TO C-10, 20.04 CHAINS TO MID-POINT TO B-09.
7. ACT 132 SURVEY BY G.A. STEADMAN & SON, INC., SIGNED BY RICHARD W. STEADMAN, P.S. No. 11370, RECORDED 9-6-74 IN LIBER 2, PAGE 90, TWO PARCELS IN THE SOUTHWEST ¼ OF SECTION 29, PLAT SHOWS "SET ½" IRON PIPE 24" OAK N.E. 48.72' 18" OAK N.W. 65.48' 38" OAK S.W. 106.99' THE PLAT ALSO SHOWS A PARCEL BETWEEN THE SUBJECT PARCELS LABELED "OUR SURVEY #70-465" AND FOUND IRONS AROUND THAT PARCEL. THE LEGEND INDICATES THE FOUND IRONS AS "1/2" IRON PIPE SET IN 1970 IN OUR SURVEY #70-465."
8. LAND CORNER RECORDATION CERTIFICATE LIBER 5, PAGE 36 BY RONNIE M. LESTER, P.S. 18998, COUNTERSIGNED BY GARY D. LESTER, P.S. 17624, RECORDED UNDER THE INGHAM COUNTY SURVEY AND REMONUMENTATION PROJECT OCTOBER, 1978. PART "A" "C-9 POST SET BY HARVEY PARKE IN ORIGINAL GOVERNMENT SURVEY DATED FEB 17-27, 1826. CORNER REFERRED TO IN SUBSEQUENT SURVEYS OF GARDENER ROAD (NOW BLACKMORE ROAD) JUNE 3, 1838 AND ROYSTONE ROAD (NOW BLACKMORE ROAD) JULY 21, 1838, BY A. JACKSON, COUNTY SURVEYOR. CORNER IDENTIFIED AS POST BY T.J. BROWN, COUNTY SURVEYOR IN A SURVEY DATED MAY 6, 1873 (V.3, P.74)."  
PART "B" "C-9 EXCAVATED HOLE 6' X 6' TO AVERAGE DEPTH OF 2.6' AT THE INTERSECTION OF THE CENTERLINES OF BELLEVUE ROAD AND BLACKMORE ROAD. FOUND BOAT SPIKE AT ROAD SURFACE. FOUND SECOND OLD BOAT SPIKE, AT THE INTERSECTION OF THE CENTERLINES OF BELLEVUE ROAD AND BLACKMORE ROAD. MEASURED NORTH TO C-8 AND SOUTH TO C-10 + 2650', IN CLOSE ACCORD WITH G.L.O. MEASURED EAST TO D-9 ± 2650' AND WEST TO B-9 ± 2660', IN CLOSE ACCORD WITH G.L.O. ACCEPTED BOAT SPIKE AS CORNER. EXCAVATION CONDUCTED BY INGHAM COUNTY SURVEY AND REMONUMENTATION PROJECT CREW."  
PART "C" "C-9 SOUTHEAST CORNER, SECTION 19, T1N-R1W. SET 4" X 36" CONCRETE MONUMENT WITH ½" X 38" REROD WITH CAP #18998, AND CONCRETE COLLAR WITH COVER AT LOCATION OF BOAT SPIKE DESCRIBED ABOVE.  
NAIL & TAG, #18998, NORTHWEST SIDE 10" SCOTCH PINE, SSW, 43.11'  
NAIL & TAG, #18998, WEST SIDE 18" WILD CHERRY, NE, 148.82'  
NAIL & TAG, #18998, SOUTH SIDE 20" HICKORY, EAST, 314.25'  
NAIL & TAG, #18998, SOUTH SIDE 4" FENCE CORNER POST, NE, 47.28'  
NAIL & TAG, #18998, EAST SIDE POWER POLE, SE, 70.68'
9. LAND CORNER RECORDATION CERTIFICATE LIBER 5, PAGE 155, BY AUSTIN C. WILLIAMS, P.S. No. 21275, RECORDED JANUARY 16, 1979, PART A: "C-9 ORIGINAL MONUMENT AND ACCESSORIES OBLITERATED" PART B: "C-9 FOUND 5/8" IRON ROD IN MONUMENT BOX AT INTERSECTION OF CENTERLINES OF BELLEVUE AND BLACKMORE ROAD." PART C: "NAIL & TAG IN FENCE POST N40°E 4730' (sic) NAIL & TAG IN P.P. S46°E 70.40' NAIL & TAG IN 12" SPRUCE S30°W 42.90'
10. ACT 132 SURVEY BY WILLIAMS SURVEYING, SIGNED BY AUSTIN C. WILLIAMS, P.S. No. 21275, LIBER 3, PAGES 709-710, RECORDED JANUARY 15, 1979, PARCEL IN THE SOUTHWEST ¼ OF SECTION 20, MONUMENT NOT RECITED, WITNESSES SAME AS LCRC L5 P155, EXCEPT DISTANCE TO FENCE POST IS STATED CORRECTLY AS 47.30'
11. ACT 132 SURVEY BY POLARIS SURVEYING COMPANY, SIGNED BY RONNIE M. LESTER, P.S. 18998, A PARCEL IN THE SOUTHWEST 1/4 OF SECTION 29, RECORDED 4-3-1989, LIBER 5, PAGES 1028-1029, RECITES SAME MONUMENT AND WITNESSES AS LCRC LIBER 5 PAGE 21
12. ACT 132 SURVEY BY POLARIS SURVEYING COMPANY, SIGNED BY RONNIE M. LESTER, P.S. 18998, A PARCEL IN THE SOUTHWEST 1/4 OF SECTION 29, RECORDED 10-7-1985, LIBER 4, PAGES 1107-1108, RECITES SAME MONUMENT AND WITNESSES AS LCRC LIBER 5 PAGE 21
13. ACT 132 SURVEY BY ACCOLADE, INC., SIGNED BY RON HELSEL, P.S. 18994, A PARCEL IN THE SOUTHWEST 1/4 OF SECTION 29, RECORDED 10-7-1989, LIBER 4, PAGES 1107-1108, RECITES "LIBER 5 PAGE 21"
14. ACT 132 SURVEY BY WOLVERINE ENGINEERS AND SURVEYORS, INC., SIGNED BY MAURICE H. MAHIEU, P.S. 28414, 7 PARCELS IN THE NORTHWEST 1/4 OF SECTION 29, RECORDED 8-4-1999, LIBER 8, PAGE 607, "1/2" IRON ROD (TOP MUSHROOM TO 5/8"±) N&T #28414 NE SIDE UTILITY POLE, S43°E 71.55'  
N&T #28414 N SIDE 18" PINE, S59°W 58.78' N&T #28414 W SIDE 12" PINE, S20°W 72.82'  
N&T #28414 S SIDE UTILITY POLE, N56°E 84.22'



2004-062684  
Page: 2 of 2

10/05/2004 08:11 A

LAND CORNER RECORDATION CERTIFICATE  
Filing Requirement of Act 74, Mich. P.A. 1970

For Corners in  
**INGHAM**  
(county)

Located In:

Corner Code #

1. Public Land Survey  
1/4 CORNER COMMON  
TO SECTIONS 29 & 30  
LESLIE TOWNSHIP

T 1N R 1W

C-10

Paula Johnson-  
INGHAM COUNTY  
REGISTER OF DEEDS  
OFFICIAL SEAL



L-11 P-244

CRNR 17.00

2004-062685



2004-062685

Page: 1 of 2

10/05/2004 08:11 A

2. Property Controlling  
in Section S      T      R       
S      T      R     

Register of Deeds Stamp & File Number

3. Miscellaneous S      T      R     

4. Lot No         , Recorded Plat                     

5. Private Claims   

I, Brian Reynolds, in a field survey on JULY 14, 2004 do hereby certify that under requirements of P.A. 74, Michigan P.A. of 1970, the corner points mentioned in lines 1 and 2 above were in conformance with regulations and rules therefore as required in the current manual of survey instructions of the United States Department of the Interior, Bureau of Land Management or by a decree of a Court of Law and/or that the corner points mentioned in lines 3, 4, and 5 above were in conformance with the rules of the Michigan Board of Land Surveyors or by a Decree of a Court of Law; established, re-established, monumented, re-monumented, recovered, found as expressed below.

NOTE: Not more than 2 corners, all in the same town and range, may be recorded on this certificate.

A. Description of original monument and accessories and/or subsequent restoration:

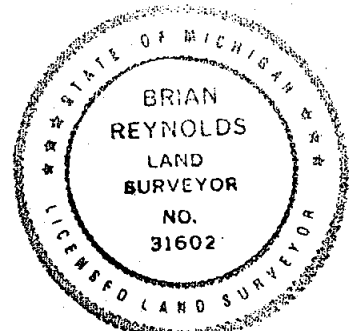
**SEE PAGE TWO FOR HISTORICAL SUMMARY**

B. Description of corner evidence found and/or method applied in restoring or reestablishing corner:

**AT APPARENT CORNER LOCATION, FOUND 3/4" IRON IN MONUMENT BOX, CONFORMING WITH WITNESSES BY SURVEYOR STEADMAN. DID NOT EXCAVATE, AS PREVIOUS SEARCH BY STEADMAN WAS DEEMED ADEQUATE. ACCEPTED LOCATION BY STEADMAN AS PROPER PERPETUATION OF CORNER LOCATION, PLACED STANDARD ALUMINUM REMONUMENTATION CAP ON IRON AS FOUND, WITNESSED AS DESCRIBED BELOW.**

C. Description of monument for corner and accessories established to perpetuate locating the position of the corner:

**WITNESSES TO 3/4" IRON WITH REMON CAP STAMPED "31602" IN MONUMENT BOX:  
FOUND NAIL AND TAG No. 18998 (RONNIE LESTER, P.S.) IN THE WEST SIDE OF 40" OAK NAZ 41° 34.06'  
FOUND NAIL AND TAG No. 28414 (MAURICE H. MAHIEU, P.S.) IN THE WEST SIDE OF 36" OAK NAZ 129° 32.80'  
FOUND NAIL AND TAG No. 18998 IN THE WEST SIDE OF 36" CHERRY NAZ 161° 73.04'  
SET NAIL AND TAG No. 31602 IN THE NORTH SIDE OF UTILITY POLE NAZ 80° 46.22'  
SET NAIL AND TAG No. 31602 IN THE WEST SIDE OF 36" MAPLE NAZ 12° 91.32'  
C-09 IS N00°02'06"E 2652.07'  
B-10 IS N89°51'39"W 2657.18'  
C-11 IS S00°01'45"E 2640.45'**



Signed by

Date

SEPTEMBER 20, 2004

Surveyor's Michigan License No

31602

FORM APPROVED BY MICHIGAN STATE BOARD OF LAND SURVEYORS, JAN. 28, 1971

REVISED MAY 14, 1975 REVISED JANUARY, 1983 REVISED OCTOBER 1985

P.A. 345 INGHAM COUNTY  
PEER APPROVED 8/31/2004

PAGE TWO

A. Description of original monument and accessories and/or subsequent restoration: T1N R1W C-10 CONTINUED

1. GENERAL LAND OFFICE DEPUTY SURVEYOR HERVEY PARKE, 1826,  
W. OAK 24 S20W 7 Do. 20 N13E 41-1/2
2. UNSIGNED MARGINAL NOTE IN GLO NOTES, "NEW MAPLE 5 IN. S43-1/2W 68 W. OAK 12 IN.  
S84E 33-1/4..."
3. NOTHING ON ROAD COMMISSION WITNESS MAP
4. SURVEY OF TWO PARCELS IN SECTION 30 BY COUNTY SURVEYOR A. JACKSON, DATED MARCH 31, 1845,  
VOLUME 1, PAGE 12. SUBJECT CORNER WITNESSED BY B OAK 14 NORTH 85 LKS W. OAK 24 S11-  
1/2E 93-1/2 LKS, NO MONUMENT RECITED. A DISTANCE FROM TO 1/8 CORNER WEST IS SHOWN AS "80R  
14-1/2 L"
5. SURVEY OF SEVERAL PARCELS IN SECTION 30 BY COUNTY SURVEYOR ANSON JACKSON DATED APRIL  
17<sup>TH</sup>, 1845, VOLUME ONE, PAGE 12, NO MENTION OF MONUMENT, WITNESSED BY "W. OAK 24 S20W 7  
Do. 20 N13E 41-1/2. APPLICABLE DISTANCES RECITED INDICATE 160 RODS TO C-11, 160 RODS 4 LINKS  
TO B-10.
6. SURVEY OF SEVERAL PARCELS IN SECTION 30 BY COUNTY SURVEYOR T.J. BROWN, DATED MAY 6, 1873,  
VOLUME 2, PAGE 98. SUBJECT CORNER DESCRIBED AS "POST FROM WHICH A MAPLE 5 IN. DIAM.  
BEARS S43-1/2W 68 LKS". THE DISTANCE TO C-09 IS SHOWN AS 40.06 CHAINS, TO 1/8 CORNER WEST  
20.02 CHAINS, TO 1/8 CORNER SOUTH 20 CHAINS.
7. LAND CORNER RECORDATION CERTIFICATE LIBER 5, PAGE 17 BY RICHARD W. STEADMAN, P.S. No.  
11370, RECORDED OCTOBER 18, 1978. PART A: "ORIGINAL MONUMENT: WOOD-POST SET BY HARVEY  
PARKE, U.S. DEPUTY SURVEYOR IN 1826; BEARING TREES: 24" W. OAK S20°W 09 LKS. AND 20" W. OAK  
N13°E 41-1/2 LKS. IN COUNTY SURVEYOR'S RECORDS, VOLUME 3, PAGE 74, T. J. BROWN,  
COUNTY SURVEYOR NOTES THIS CORNER WAS MARKED BY A POST AND WITNESSED BY A 5" MAPLE  
S43-1/2°W 68 LKS. AND A 12" W. OAK S84°E 33-1/4 LKS. DATE MAY 6, 1873. I FIND NO OTHER  
REFERENCES TO THIS CORNER IN THE PUBLIC RECORD." PART B: "DUG HOLE IN BLACKMORE  
ROAD OPPOSITE FENCES EAST AND WEST, AND FOUND A STONE WITH BROKEN CHINA ABOUT 15"  
BELOW THE SURFACE." PART C: "RAISED LOCATION OF STONE TO SURFACE WITH 1/2" IRON PIPE.  
WITNESSES: 24" OAK S.E. 33.75 FT. TELEPHONE POLE EAST 46.44 FT. 22" OAK N.E. 35.11 FT."
8. ACT 132 SURVEY BY POLARIS SURVEYING COMPANY. SIGNED BY RONNIE M. LESTER, P.S. 18998, LIBER  
5, PAGES 1028-1029, RECORDED APRIL 3, 1989, "1/2" PIPE IN MON BOX  
SET NAIL AND TAG IN WEST SIDE 24" OAK, 48° AZ., 34.3'  
SET NAIL AND TAG IN WEST SIDE 36" OAK, 132° AZ., 33.0'  
SET NAIL AND TAG IN SOUTH SIDE 6" MAPLE, 105° AZ., 24.1'  
SET NAIL AND TAG IN WEST SIDE 24" CHERRY, 168° AZ., 73.0'
9. ACT 132 SURVEY BY ACCOLADE, INC.. SIGNED BY RON HELSEL, P.S. 18994, LIBER 6, PAGE 1131,  
RECORDED APRIL 12, 1993, FD 1/2" PIPE IN MON BOX C/L BLACKMORE ROAD  
FD. N & T, 24" OAK, SE, 33.75' FD. N & T, TELE. POLE, EAST, 46.44' FD. N & T, 22" OAK, NE, 35.11'  
SET N & T, 24" CHERRY, S30°E, 73.44'
10. ACT 132 SURVEY BY WOLVERINE ENGINEERS AND SURVEYORS, INC., SIGNED BY MAURICE H. MAHIEU,  
P.S. 28414, 7 PARCELS IN THE NORTHWEST 1/4 OF SECTION 29, RECORDED 8-4-1999, LIBER 8, PAGE 607,  
"3/4" IRON ROD IN MONUMENT BOX N&T #18998 W SIDE 36" OAK, N43°E 34.25'  
N&T #28414 N SIDE 36" OAK, S52°E 33.01' N&T #28414 N SIDE 10" MAPLE, S80°E 24.08'  
N&T #28414 S SIDE 8" OAK, N58°E 32.13'



2004-062685

Page: 2 of 2

10/05/2004 08:11 A



LAND CORNER RECORDATION CERTIFICATE  
Filing Requirement of Act 74, Mich. P.A. 1970

For Corners in  
INGHAM  
(county)

Located In:

Corner Code #

1. Public Land Survey  
WEST 1/4 CORNER  
SECTION 30,  
LESLIE TOWNSHIP

T 1N R 1W

A-10

T \_\_\_\_\_ R \_\_\_\_\_

T \_\_\_\_\_ R \_\_\_\_\_

T \_\_\_\_\_ R \_\_\_\_\_

2. Property Controlling  
in Section

S \_\_\_\_\_ T \_\_\_\_\_ R \_\_\_\_\_

S \_\_\_\_\_ T \_\_\_\_\_ R \_\_\_\_\_

3. Miscellaneous

S \_\_\_\_\_ T \_\_\_\_\_ R \_\_\_\_\_

4. Lot No \_\_\_\_\_, Recorded Plat \_\_\_\_\_

5. Private Claims \_\_\_\_\_

Paula Johnson-  
INGHAM COUNTY  
REGISTER OF DEEDS  
OFFICIAL SEAL



L-12 P-82

CRNR 14.00

2005-034010



2005-034010

Page: 1 of 1  
08/29/2005 08:55P

Register of Deeds Stamp & File Number

I, Brian Reynolds, in a field survey on February 25, 2005 do hereby certify that under requirements of P.A. 74, Michigan P.A. of 1970, the corner points mentioned in lines 1 and 2 above were in conformance with regulations and rules therefore as required in the current manual of survey instructions of the United States Department of the Interior, Bureau of Land Management or by a decree of a Court of Law and/or that the corner points mentioned in lines 3, 4, and 5 above were in conformance with the rules of the Michigan Board of Land Surveyors or by a Decree of a Court of Law, established, re-established, monumented, re-monumented, recovered, found as expressed below.

NOTE: Not more than 2 corners, all in the same town and range, may be recorded on this certificate.

A. Description of original monument and accessories and/or subsequent restoration:

- CLOSING 1/4 CORNER NOT MONUMENTED BY THE GENERAL LAND OFFICE SURVEY.
- NOTHING ON ROAD COMMISSION WITNESS MAP.
- SURVEY OF SEVERAL PARCELS IN SECTION 30 BY COUNTY SURVEYOR A. JACKSON, DATED APRIL 17, 1845, VOLUME 1, PAGE 13. SUBJECT CORNER WITNESSED BY "B ASH 26 N11E 15- LKS Do. 12 S51E 2-1/2 LKS," BUT NO MONUMENT RECITED. A DISTANCE TO 1/8 CORNER EAST IS SHOWN AS "79R 2"
- LAND CORNER RECORDATION CERTIFICATE LIBER 6, PAGE 271 BY LARRY A. BRYAN, P.S. No. 25832, RECORDED MARCH 29, 1985, PART A: "ORIGINAL MONUMENT AND ACCESSORIES OBLITERATED" PART B: " FOUND RETANGULAR (sic) SHAPED IRON WITH NOTCH IN TOP. " PART C: "A-10 WEST 1/4 CORNER SEC. 30 TOP ROCK EAST 1/4 CORNER SECTION 25 T1N, R2W, SOUTH, 6.8' SET NAIL & TAG WEST SIDE 5" ASH, S5°W, 27.16' "

B. Description of corner evidence found and/or method applied in restoring or reestablishing corner:

FOUND IRON AS DESCRIBED BY SURVEYOR BRYAN, AND ONE REMAINING WITNESS TREE. ALSO FOUND A POINTED STONE APPARENTLY REPRESENTING THE CORRESPONDING CLOSING CORNER AS DESCRIBED BY SURVEYOR BRYAN. TRAVERSED ALL OF SECTION 30, TYING IN OCCUPATION THROUGHOUT. IRON AS FOUND WAS LESS THAN 4 FEET FROM THE MIDPOINT BETWEEN A-09 AND A-11. ACCEPTED FOUND IRON AS PERPETUATION OF CORNER POSITION BY JACKSON. REPLACED IRON BAR WITH STANDARD IRON FORM PIN AND CAP, WITNESSED AS DESCRIBED BELOW.

C. Description of monument for corner and accessories established to perpetuate locating the position of the corner:

WITNESSES TO 3/4" X 24" STEEL FORM PIN WITH ALUMINUM CAP STAMPED "31602"  
FOUND NAIL & TAG No. 18998 (RONNIE LESTER, P.S.) IN THE EAST SIDE OF A 24" ASH N5°E 19.33'  
FOUND NAIL & TAG "KEBS" (KYES ENGINEERING-BRYAN SURVEYING) IN THE NW SIDE OF 30" ASH S85°W 29.81'  
FOUND NAIL & TAG "KEBS" IN THE NORTHWEST CORNER OF A RAILROAD TIE S02°W 5.31'  
FOUND NAIL & BOTTLE CAP IN THE SOUTHWEST SIDE OF A 24" HICKORY N15°W 54.24'  
SET NAIL & TAG No. 31602 IN THE NORTH SIDE OF A 8" ASH N85°E 19.17'  
FROM A-09 IS S00°01'17"E 2638.13' TO A-11 IS S00°03'06"W 2647.24' FROM B-10 IS N89°51'39"W 2631.09'

P.A. 345 INGHAM COUNTY  
PEER APPROVED 5/24/2005 M



Signed by

Date 6/21/05

Surveyor's Michigan License No 31602

LAND CORNER RECORDATION CERTIFICATE  
Filing Requirement of Act 74, Mich. P.A. 1970

For Corners in  
INGHAM  
(county)

Located In:

Corner Code #

1. Public Land Survey  
CLOSING CORNER  
COMMON TO SECTIONS  
30 & 31, LESLIE TOWNSHIP

T 1N R 1W  
T \_\_\_\_\_ R \_\_\_\_\_  
T \_\_\_\_\_ R \_\_\_\_\_  
T \_\_\_\_\_ R \_\_\_\_\_

A-11

Paula Johnson-  
INGHAM COUNTY  
REGISTER OF DEEDS  
OFFICIAL SEAL



L-12 P-83

CRNR 14.00

2005-034011



2005-034011

Page: 1 of 1  
06/29/2005 08:55P

2. Property Controlling  
in Section S \_\_\_\_\_ T \_\_\_\_\_ R \_\_\_\_\_  
S \_\_\_\_\_ T \_\_\_\_\_ R \_\_\_\_\_

3. Miscellaneous S \_\_\_\_\_ T \_\_\_\_\_ R \_\_\_\_\_

4. Lot No \_\_\_\_\_, Recorded Plat \_\_\_\_\_

5. Private Claims \_\_\_\_\_

Register of Deeds Stamp & File Number

	A	B	C	D	E	F	G	H	I	J	K	L	M
1													
2	6			5		4		3		2		1	
3													
4	7			8		9		10		11		12	
5													
6	18			17		16		15		14		13	
7													
8	19			20		21		22		23		24	
9													
10	30			29		28		27		26		25	
11													
12	31			32		33		34		35		36	
13													

I, Brian Reynolds, in a field survey on May 23, 2005 do hereby certify that under requirements of P.A. 74, Michigan P.A. of 1970, the corner points mentioned in lines 1 and 2 above were in conformance with regulations and rules therefore as required in the current manual of survey instructions of the United States Department of the Interior, Bureau of Land Management or by a decree of a Court of Law and/or that the corner points mentioned in lines 3, 4, and 5 above were in conformance with the rules of the Michigan Board of Land Surveyors or by a Decree of a Court of Law; established, re-established, monumented, re-monumented, recovered, found as expressed below.

NOTE: Not more than 2 corners, all in the same town and range, may be recorded on this certificate.

A. Description of original monument and accessories and/or subsequent restoration:

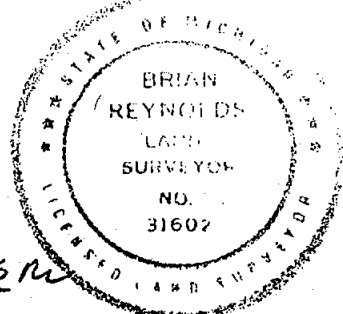
- GENERAL LAND OFFICE SURVEYOR HERVEY PARKE, 1826, "79.72 INT. WEST LINE 24 L. N OF P. W. OAK 20 N72E 92 POPLAR 6 S7E 56 1/2 "
- NOTHING ON ROAD COMMISSION WITNESS MAP.
- SURVEY OF SEVERAL PARCELS IN SECTION 30 BY COUNTY SURVEYOR A. JACKSON, DATED APRIL 17, 1845, VOLUME 1, PAGE 13. SUBJECT CORNER WITNESSED BY " BASH 26 N11E 15- LKS Do. 12 S51E 2-1/2 LKS, " BUT NO MONUMENT RECITED. A DISTANCE TO 1/8 CORNER EAST IS SHOWN AS "79R 2"
- SURVEY OF SEVERAL PARCELS IN SECTION 31 BY COUNTY SURVEYOR A. JACKSON, DATED AUGUST 25, 1855, VOLUME 3, PAGE 81. SUBJECT CORNER NECESSARILY WOULD HAVE BEEN USED FOR THIS SURVEY, BUT NO MONUMENT OR WITNESSES ARE RECITED.
- LAND CORNER RECORDATION CERTIFICATE LIBER 3, PAGE 623, RECORDED IN OCTOBER 1976 BY MAYNARD DYER, P.S. No. 21565 REPRESENTS THE SUBJECT CORNER AS COMMON WITH A POSITION RECORDED EARLIER AS M-11, T1N R2W BY FRED WHITE, P.S. 12034 (LIBER 2, PAGE 207, 1972)
- REGARDING THE CORRESPONDING STANDARD CORNER M-11 T1N R2W, A LAND CORNER RECORDATION CERTIFICATE, LIBER 11, PAGE 213, BY DAVID L CLIFFORD, P.S. No. 25837, RECORDED SEPTEMBER 23, 2004, PART B READS, IN PART, "TRAVERSED ALL OF SECTION 36, T1N, R2W IN MAY OF 1997 AND WAS CONVINCED THAT MONUMENT AS RECORDED FOR M-11 T1N, R2W, IN LIBER 2 PAGE 207 WAS INDEED THE CORNER FOR SECTIONS 25 & 36 T1N R2W BECAUSE OF ITS RELATIONSHIP TO ADJACENT CORNERS AND OCCUPATION. IT APPEARS THAT THE FOUND MONUMENTATION MAY ALSO BE THE CORNER TO SECTIONS 30 & 31, T1N R1W REGARDLESS OF WHAT THE GLO FALLING WAS SUPPOSED TO BE....MEASURED SOUTH 2639.85 FEET TO M-12..."

B. Description of corner evidence found and/or method applied in restoring or reestablishing corner:

ATTEMPTED TO "BACK IN" THE SUBJECT CORNER POSITION BE RETRACING SURVEYS BY JACKSON, ITEMS 3 & 4 IN PART "A". RESULTS CONFIRM CONCLUSIONS BY SURVEYORS DYER AND CLIFFORD THAT THE SUBJECT CLOSING CORNER IS COMMON WITH THE CORRESPONDING CLOSING CORNER. ACCEPTED MONUMENTATION AND WITNESSES BY CLIFFORD AS VALID PERPETUATION OF BOTH THE STANDARD AND CLOSING CORNERS. MONUMENT AND WITNESSES LEFT AS FOUND, AND RESTATED FOR THE RECORD BELOW.

C. Description of monument for corner and accessories established to perpetuate locating the position of the corner:

WITNESSES TO 3/4" STEEL BAR WITH 2 1/2" ALUMINUM CAP STAMPED "PS 25837"  
NAIL & KEBS TAG WEST SIDE 12" CHERRY N40°E 27.60'  
NAIL & TAG No. 25837 EAST SIDE 8" QUAD CHERRY S05°E 30.61'  
NAIL & CPCO. TAG WEST SIDE RR TIE FENCE POST S05°W 27.15'  
NAIL & TAG No. 25837 NORTH SIDE 8" HICKORY S75°W 78.30'  
NAIL & KEBS TAG NE SIDE 6" SPRUCE N50°W 54.22'



P.A. 345 INGHAM COUNTY  
PEER APPROVED 5/24/2005 rw

Signed by [Signature]

Date May 23, 2005

Surveyor's Michigan License No 31602

FORM APPROVED BY MICHIGAN STATE BOARD OF LAND SURVEYORS. JAN. 28, 1971

REVISED MAY 14, 1975 REVISED JANUARY, 1983 REVISED OCTOBER 1995

LAND CORNER RECORDATION CERTIFICATE  
Filing Requirement of Act 74, Mich. P.A. 1970

For Corners in  
INGHAM  
(county)

Located In:

Corner Code #

1. Public Land Survey  
1/4 CORNER COMMON  
TO SECTIONS 19 & 30  
LESLIE TOWNSHIP

T 1N R 1W  
T \_\_\_\_\_ R \_\_\_\_\_  
T \_\_\_\_\_ R \_\_\_\_\_  
T \_\_\_\_\_ R \_\_\_\_\_

B-09

Paula Johnson-  
INGHAM COUNTY  
REGISTER OF DEEDS  
OFFICIAL SEAL



**L-12 P-89**

CRNR 17.00

**2005-034015**



**2005-034015**

Page: 1 of 2  
06/29/2005 08:55P

2. Property Controlling  
in Section S \_\_\_\_\_ T \_\_\_\_\_ R \_\_\_\_\_  
S \_\_\_\_\_ T \_\_\_\_\_ R \_\_\_\_\_

3. Miscellaneous S \_\_\_\_\_ T \_\_\_\_\_ R \_\_\_\_\_

4. Lot No \_\_\_\_\_, Recorded Plat \_\_\_\_\_

5. Private Claims \_\_\_\_\_

I, Brian Reynolds, in a field survey on March 9, 2005 do hereby certify that under requirements of P.A. 74, Michigan P.A. of 1970, the corner points mentioned in lines 1 and 2 above were in conformance with regulations and rules therefore as required in the current manual of survey instructions of the United States Department of the Interior, Bureau of Land Management or by a decree of a Court of Law and/or that the corner points mentioned in lines 3, 4, and 5 above were in conformance with the rules of the Michigan Board of Land Surveyors or by a Decree of a Court of Law; established, re-established, monumented, re-monumented, recovered, found as expressed below.

NOTE: Not more than 2 corners, all in the same town and range, may be recorded on this certificate.

A. Description of original monument and accessories and/or subsequent restoration:

**SEE PAGE TWO FOR HISTORICAL SUMMARY**

B. Description of corner evidence found and/or method applied in restoring or reestablishing corner:

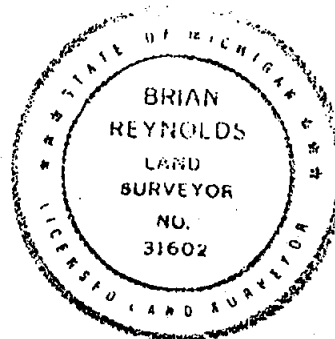
**FOUND CONCRETE MONUMENT IN MONUMENT BOX IN THE CENTERLINE OF EAST - WEST BITUMINOUS ROAD. ACCEPTED FOUND MONUMENT AS PROPER PERPETUATION OF CORNER POSITION, BASED ON PREVIOUS EXCAVATION AND DOCUMENTATION BY SURVEYOR LESTER. LEFT CONCRETE MONUMENT IN PLACE, PLACED STANDARD ALUMINUM CAP ON CONCRETE MONUMENT AND WITNESSED AS DESCRIBED BELOW.**

C. Description of monument for corner and accessories established to perpetuate locating the position of the corner:

**WITNESSES TO 3/4" X 24" STEEL FORM PIN WITH ALUMINUM CAP STAMPED "31602" IN MONUMENT BOX  
FOUND NAIL & "KEBS" TAG IN THE SOUTH SIDE OF AN 8" TWIN MAPLE NAZ 76° 98.98'  
FOUND NAIL & "KEBS" TAG IN THE SOUTH SIDE OF A 40" MAPLE NAZ 282° 145.32'  
FOUND NAIL & "KEBS" TAG IN THE NORTHWEST SIDE OF A UTILITY POLE NAZ 219° 65.40'  
FOUND NAIL & "KEBS" TAG IN THE SOUTHWEST SIDE OF A UTILITY POLE NAZ 166° 53.72'  
TO A-09 IS S89°52'30"W 2628.87' FROM C-09 IS N89°54'01"W 2661.99'  
TO B-10 IS S00°04'09"E 2650.26' FROM B-08 IS S00°10'45"W 2644.46'**

P.A. 345 INGHAM COUNTY

PEER APPROVED 5/24/2005 m



Signed by [Signature]

Date May 23, 2005

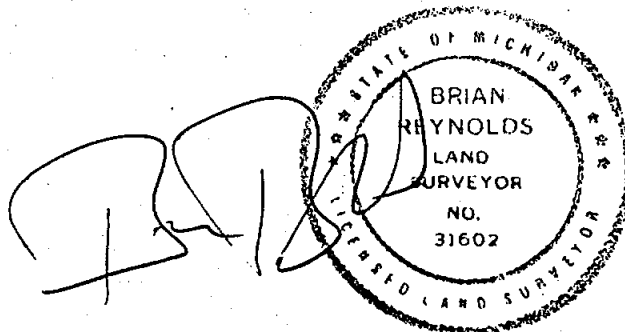
Surveyor's Michigan License No 31602

FORM APPROVED BY MICHIGAN STATE BOARD OF LAND SURVEYORS. JAN. 28, 1971  
REVISED MAY 14, 1975 REVISED JANUARY, 1983 REVISED OCTOBER 1995

PAGE TWO

A. Description of original monument and accessories and/or subsequent restoration: T1N R1W B-09 CONTINUED

1. GENERAL LAND OFFICE DEPUTY SURVEYOR HERVEY PARKE, 1826,  
B. ASH 14 N24E 16 IRONWOOD 6 S3W 18
2. UNSIGNED MARGINAL NOTE IN GLO NOTES, "NEW HICKORY 5 IN. N2-1/2°E 232 LKS  
NEW HICKORY 5 IN. S72°E 163 LKS
3. NOTHING ON ROAD COMMISSION WITNESS MAP
4. SURVEY OF SEVERAL PARCELS IN SECTION 30 BY COUNTY SURVEYOR A. JACKSON, DATED APRIL 17,  
1845, VOLUME 1, PAGE 13. SUBJECT CORNER IS NOT WITNESSED, NO MONUMENT RECITED. A  
FRACTIONAL DISTANCE FROM A-09 TO 1/8 CORNER BETWEEN IS SHOWN AS "79R 10"
5. SURVEY OF SEVERAL PARCELS IN SECTION 30 BY COUNTY SURVEYOR T.J. BROWN, DATED MAY 6, 1873,  
VOLUME 2, PAGE 98. SUBJECT CORNER NOT WITNESSED, NO MONUMENT RECITED. A DISTANCE  
FROM C-09 TO 1/8 CORNER BETWEEN IS SHOWN AS "20.04"
6. LAND CORNER RECORDATION CERTIFICATE LIBER 4, PAGE 359 BY RONNIE LESTER, P.S. 18998,  
COUNTERSIGNED AND SEALED BY GARY D. LESTER, P.S. 17624, RECORDED SEPTEMBER 19, 1978 UNDER  
THE FORMER INGHAM COUNTY SURVEY AND REMONUMENTATION PROJECT; PART A: "POST SET IN  
ORIGINAL GOVERNMENT SURVEY BY HARVEY PARKE, FEBRUARY, 1826. CORNER REFERRED TO IN  
MISCELLANEOUS INGHAM COUNTY SURVEYOR RECORDS, SURVEYOR AND DATE UNKNOWN" PART B:  
"EXCAVATED HOLE 6' X 5.8' TO AN AVERAGE DEPTH OF 3' IN THE CENTERLINE OF BELLEVUE ROAD ON  
AN EXTENDED FENCE LINE TO THE NORTH AND SOUTH. FOUND AN IRON 10" BELOW SURFACE ON  
CENTERLINE OF ROAD AND FIELD SEPARATION NORTH AND SOUTH. FOUND A POINTED WOOD STAKE  
2.3' BELOW THE SURFACE, ABOVE A 12" POINTED CEDAR POST, 2.5' BELOW THE SURFACE, WHICH WAS  
SUPPORTED BY A 1' X 8" STONE, 2.37' BELOW THE SURFACE, ±1' NORTH OF THE CENTERLINE OF  
BELLEVUE ROAD ON A FENCE LINE TO THE NORTH AND SOUTH. ACCEPTED CEDAR POST AS CORNER.  
EXCAVATION CONDUCTED BY INGHAM COUNTY SURVEY AND REMONUMENTATION PROJECT CREW."  
PART C: "B-9 S1/4 CORNER, SECTION 19, T1N-R1W. SET 4" X 36" CONCRETE MONUMENT WITH 1/2"  
X38" REROD AND CAP #18998 WITH CONCRETE COLLAR AND COVER IN LOCATION OF 12" WOOD STAKE  
DESCRIBED ABOVE: NAIL & TAG, #18998, SOUTH SIDE 24" MAPLE, WNW, 145.39'  
NAIL & TAG, #18998, NORTH SIDE 24" MAPLE, WSW, 137.57'  
NAIL & TAG, #18998, NORTHWEST SIDE 6" ELM, SW, 72.61'  
CENTERLINE OF TOP BOLT ON NORTH SIDE OF NORTHWEST LEG OF POWER TOWER ±6' ABOVE  
GROUND, SOUTH 165.6'
7. ACT 132 SURVEY BY WOLVERINE ENGINEERING, SIGNED BY GEORGE M. YOUNG, P.S. 17640, LIBER 3,  
PAGE 768, RECORDED MAY 5, 1978, PARCEL IN THE SOUTHWEST 1/4 OF SECTION 19, WITNESSES SAME  
AS LCRC LIBER 4, PAGE 359.



2005-034015  
Page: 2 of 2  
06/29/2005 08:55P

LAND CORNER RECORDATION CERTIFICATE  
Filing Requirement of Act 74, Mich. P.A. 1970

For Corners in  
INGHAM  
(county)

Located In:

Corner Code #

1. Public Land Survey  
CENTER 1/4 CORNER,  
SECTIONS 30,  
LESLIE TOWNSHIP

T 1N R 1W

B-10

T \_\_\_\_\_ R \_\_\_\_\_

T \_\_\_\_\_ R \_\_\_\_\_

T \_\_\_\_\_ R \_\_\_\_\_

Paula Johnson-  
INGHAM COUNTY  
REGISTER OF DEEDS  
OFFICIAL SEAL



L-12 P-91

CRNR 14.00

2005-034016



2005-034016

Page: 1 of 1

08/29/2005 08:55P

2. Property Controlling  
in Section

S \_\_\_\_\_ T \_\_\_\_\_ R \_\_\_\_\_

S \_\_\_\_\_ T \_\_\_\_\_ R \_\_\_\_\_

3. Miscellaneous

S \_\_\_\_\_ T \_\_\_\_\_ R \_\_\_\_\_

4. Lot No \_\_\_\_\_, Recorded Plat \_\_\_\_\_

5. Private Claims \_\_\_\_\_

Register of Deeds Stamp & File Number

I, Brian Reynolds, in a field survey on February 25, 2005 do hereby certify that under requirements of P.A. 74, Michigan P.A. of 1970, the corner points mentioned in lines 1 and 2 above were in conformance with regulations and rules therefore as required in the current manual of survey instructions of the United States Department of the Interior, Bureau of Land Management or by a decree of a Court of Law and/or that the corner points mentioned in lines 3, 4, and 5 above were in conformance with the rules of the Michigan Board of Land Surveyors or by a Decree of a Court of Law; established, re-established, monumented, re-monumented, recovered, found as expressed below.

NOTE: Not more than 2 corners, all in the same town and range, may be recorded on this certificate.

A. Description of original monument and accessories and/or subsequent restoration:

- CENTER OF SECTION NOT MONUMENTED BY THE GENERAL LAND OFFICE SURVEY.
- NOTHING ON ROAD COMMISSION WITNESS MAP.
- SURVEY OF TWO PARCELS IN SECTION 30 BY COUNTY SURVEYOR A. JACKSON, DATED MARCH 31, 1845, VOLUME 1, PAGE 12. SUBJECT CORNER NOT WITNESSED, NO MONUMENT RECITED. A DISTANCE FROM C-10 TO 1/8 CORNER BETWEEN IS SHOWN AS ".80R 14-1/2 L."
- SURVEY OF SEVERAL PARCELS IN SECTION 30 BY COUNTY SURVEYOR T.J. BROWN, DATED MAY 6, 1873, VOLUME 2, PAGE 98. SUBJECT CORNER NOT WITNESSED, NO MONUMENT RECITED. A DISTANCE FROM C-10 TO 1/8 CORNER BETWEEN IS SHOWN AS ".20.02."
- LAND CORNER RECORDATION CERTIFICATE LIBER 3, PAGE 624 BY MAYNARD R. DYER, P.S. No. 21565, RECORDED OCTOBER 7, 1976, PART A: B-10 CENTER OF SECTION 30, T1N, R1W NO RECORD OF CORNER BEING SET IN ORIGINAL GOVERNMENT SURVEY. EVIDENCE POINT TO CORNER BEING ESTABLISHED BY COUNTY SURVEYOR A. P. DRAKE IN JUNE 1878. THE RECORDS SHOW HE SURVEYED MOST OF THE SOUTH 1/2 OF SECTION 30 AT THIS TIME AND SET VARIOUS 1/8 CORNERS. EVEN THOUGH RECORD DOESNT (sic) SHOW WITNESSES, I BELIEVE HE ESTABLISHED THIS CORNER." PART B: SET 1/2" BAR AND CAP AT BASE OF OLD FENCE POST. FOUND THIS OLD POST 4' NORTH OF FENCE WEST AND 1' EAST OF NORTH-SOUTH FENCE. MEASUREMENTS WEST AND SOUTH SUPPORT THIS LOCATION. PART C: CENTER OF SECTION 30, T1N, R1W NAIL AND TAG IN EAST SIDE OF FENCE CORNER POST, S.S.W., 4.92' NAIL AND TAG IN NORTH SIDE OF 12" (1 OF 7) COTTONWOOD, WEST, 59.18'

P.A. 345 INGHAM COUNTY  
PEER APPROVED 5/24/2005

B. Description of corner evidence found and/or method applied in restoring or reestablishing corner:

DID NOT FIND MONUMENT OR WITNESSES DESCRIBED IN ITEM 5 ABOVE. THE PREVIOUS MONUMENT AND WITNESSES WERE APPARENTLY DESTROYED BY EARTHMOVING MACHINERY DURING THE RECENT REPLACEMENT OF A MAJOR NORTH-SOUTH POWER LINE. ATTEMPTED TO RESTORE CORNER BY RETRACING SURVEY BY DYER, FOUND THAT IMPRACTICAL. ATTEMPTED TO RESTORE CORNER BY RETRACING SURVEYS BY JACKSON AND BROWN, ITEMS 3 AND 4 ABOVE, RESULTS INCONCLUSIVE. RESTORED CORNER AT INTERSECTION OF 1/4 LINES. SET 3/4" X 24" SOLID ROUND IRON WITH ALUMINUM CAP STAMPED "31602", AND WITNESSED AS DESCRIBED BELOW.

C. Description of monument for corner and accessories established to perpetuate locating the position of the corner:

WITNESSES TO 3/4" X 24" SOLID ROUND IRON WITH ALUMINUM CAP STAMPED "31602"  
SET NAIL & TAG No. 31602 IN THE WEST SIDE OF A POWER POLE NAZ 38° 19.00'  
SET 1/2" IRON WITH "TRAVERSE POINT" CAP NAZ 52° 16.91'  
SET NAIL & TAG No. 31602 IN THE SOUTH SIDE OF A 6" MAPLE CLUSTER NAZ 256° 38.50'  
SET NAIL & TAG No. 31602 IN THE NORTH SIDE OF A 10" MAPLE NAZ 259° 59.70'  
FROM B-09 IS S00°04'09"E 2650.26' TO B-11 IS S00°04'09"E 2644.04'  
FROM C-10 IS N89°51'39"W 2657.18' TO A-10 IS N89°51'39"W 2631.09'

Signed by

Date May 23, 2005

Surveyor's Michigan License No 31602

