

INGHAM COUNTY  
**LAND CORNER RECORDATION CERTIFICATE**  
FILING REQUIREMENT OF ACT 74, MICH. P.A. 1970

FOR CORNERS OF --	Sec	LOCATED IN --	CORNER CODE NUMBER
1. PUBLIC LAND SURVEY	36	T. 1 N. 1 W.	M-12, M-13
2. PROPERTY CONTROLLING IN SECTION		T. S. R. E. W.	
3. MISCELLANEOUS PROPERTY IN SECTION		T. S. R. E. W.	
4. LOT NO. _____, RECORDED PLAT _____			
5. PRIVATE CLAIMS _____			

LIBER 2 PG 445

FILED

JUN 28 1 25 PM '73

REGISTER OF DEEDS

*Ernest M. Lester*  
INGHAM COUNTY, MICH.  
REGISTER OF DEEDS STAMP AND  
FILING NUMBER

I, Ronnie M. Lester do hereby certify that under requirements of P.A. 74, Michigan P.A. of 1970, the corner points mentioned in lines 1 and 2 above (identified with circles on index code diagram - over) were, in a field survey on May 9 19 73, established, re-established, monumented, re-monumented, recovered or restored as expressed below and in conformance with regulations and rules therefore as required in the current manual of survey instructions of the United States Department of the Interior, Bureau of Land Management or by a decree of a court of law. Furthermore, that the corner points mentioned in lines 3, 4 and 5 above were, in a field survey on \_\_\_\_\_ 19\_\_\_\_, found, recovered, restored, established or re-established as expressed below and in conformance with the rules of the Michigan State Board of Registration for Land Surveyors or, by a Decree of a Court of law:

A. Description of original monument and accessories and/or subsequent restoration:

- M-12 Original monument and accessories obliterated
- M-13 Original monument and accessories obliterated

B. Description of corner evidence found and/or method applied in restoring or re-establishing corner:

- M-12 E 1/4 Corner Section 36; Found old post surrounded by rocks 2' below surface of ground 1.5' East of N-S fence and 1.5' North of fence West. Measurement North and South in close accord with original governmental measurement.
- M-13 Found witnesses as called for in Consumer Power survey records and found fire clay monument as witnessed.

C. Description of monument for corner and accessories established to perpetuate locating the position of the corner:

- M-12 E 1/4 Corner Section 36, T1N, R1W  
Nail & Tag SE side 15" ash, NE, 17.16'  
Nail & Tag SW side 30" wild cherry, ESE, 24.75'  
Nail & Tag West side 8" ash, South, 11.20'
- M-13 SE Corner Section 36, T1N, R1W  
Nail & Tag South side 6" poplar, NW, 15.72'  
Nail & Tag North side 15" thornapple, East, 29.27'  
Nail & Tag East side 15" multi-maple, North, 56.20'

SIGNED BY *Ronnie M. Lester* DATE June 28, 1973

SURVEYOR'S MICHIGAN REGISTRATION NO. 18998

FOR STATE AND UNITED STATES AGENCIES:

SIGNED BY \_\_\_\_\_ DATE \_\_\_\_\_

CHIEF OF SURVEY PARTY

APPROVED AND SIGNED BY \_\_\_\_\_ DATE \_\_\_\_\_

MICHIGAN REGISTERED LAND SURVEYOR (SEAL)

SURVEYOR'S MICHIGAN REGISTRATION NO. \_\_\_\_\_

546

Form No. M1M73B  
DOUBLEDAY BROS. & CO., KALAMAZOO, MICH.

FORM APPROVED BY MICHIGAN STATE BOARD OF REGISTRATION, JAN. 28, 1971  
DISTRIBUTED BY MICHIGAN SOCIETY OF REGISTERED LAND SURVEYORS

INGHAM COUNTY  
**LAND CORNER RECORDATION CERTIFICATE**  
FILING REQUIREMENT OF ACT 74, MICH. P.A.1970

FOR CORNERS OF:-	LOCATED IN:-	CORNER CODE NUMBER
1. PUBLIC LAND SURVEY <u>36</u> Sec. T. <u>1</u> N. R. <u>1</u> W.		<u>L-11, L-12, L-13</u>
2. PROPERTY CONTROLLING IN SECTION _____, T. _____, N. S., R. _____, E. W.		
3. MISCELLANEOUS PROPERTY IN SECTION _____, T. _____, N. S., R. _____, E. W.		
4. LOT NO. _____, RECORDED PLAT _____		
5. PRIVATE CLAIMS _____		

LIBER 2 PG 447

FILED

JUN 28 1 25 PM '73

REGISTER OF DEEDS

*David M. Lester*  
INGHAM COUNTY, MICH.

REGISTER OF DEEDS STAMP AND  
FILING NUMBER

I, Ronnie M. Lester do hereby certify that under requirements of P.A. 74, Michigan P.A. of 1970, the corner points mentioned in lines 1 and 2 above (identified with circles on index code diagram-over) were, in a field survey on May 9 1973, established, re-established, monumented, re-monumented, recovered or restored as expressed below and in conformance with regulations and rules therefore as required in the current manual of survey instructions of the United States Department of the Interior, Bureau of Land Management or by a decree of a court of law. Furthermore, that the corner points mentioned in lines 3, 4 and 5 above were, in a field survey on \_\_\_\_\_ 19\_\_\_\_, found, recovered, restored, established or re-established as expressed below and in conformance with the rules of the Michigan State Board of Registration for Land Surveyors or, by a Decree of a Court of law:

A. Description of original monument and accessories and/or subsequent restoration:

- L-11 Original monument and accessories obliterated
- L-12 No record of original monument being set
- L-13 Original monument and accessories obliterated

B. Description of corner evidence found and/or method applied in restoring or re-establishing corner:

- L-11 Set railroad spike from old witnesses provided by Ingham County Road Commission. Centerline intersection of roads.
- L-12 Set 1/2" bar at intersection of N-S 1/4 line with E-W 1/4 line on Fence line East and West and 2.5' East of West edge of road.
- L-13 Found 3/4" pipe in Centerline of road on Fence lines East and West. Measured distances East and West in close accord with original governmental measurement.

C. Description of monument for corner and accessories established to perpetuate locating the position of the corner:

- L-11 N 1/4 Corner Section 36, T1N, R1W  
Nail & Tag East side 36" hickory, NNE, 71.57'  
Nail & Tag SE side 12" maple, NE, 55.24'  
Nail & Tag West Side 36" hickory, SE, 117.77'
- L-12 Center of Section 36, T1N, R1W  
Nail & Tag North side 10" aple, SE, 41.84'  
Nail & Tag North side 10" wild cherry, SW, 46.15'  
Nail & Tag North side 12" hickory, West, 28.83'
- L-13 S 1/4 Corner Section 36, T1N, R1W  
National Resources Nail & Tag North side 36" oak, East, 25.73'  
National Resources Nail & Tag South side 24" hickory, West, 17.47'  
National Resources Nail & Tag North side 36" oak, SW, 20.57'

SIGNED BY Ronnie M. Lester DATE \_\_\_\_\_

SURVEYOR'S MICHIGAN REGISTRATION NO. 18998

FOR STATE AND UNITED STATES AGENCIES:

SIGNED BY \_\_\_\_\_ DATE \_\_\_\_\_  
CHIEF OF SURVEY PARTY

APPROVED AND SIGNED BY \_\_\_\_\_ DATE \_\_\_\_\_  
MICHIGAN REGISTERED LAND SURVEYOR

(SEAL)

SURVEYOR'S MICHIGAN REGISTRATION NO. \_\_\_\_\_

Form No. ML M73B  
DOUBLEDAY BROS. & CO., KALAMAZOO, MICH.

FORM APPROVED BY MICHIGAN STATE BOARD OF REGISTRATION, JAN. 28, 1971  
DISTRIBUTED BY MICHIGAN SOCIETY OF REGISTERED LAND SURVEYORS

INGHAM COUNTY  
**LAND CORNER RECORDATION CERTIFICATE**  
FILING REQUIREMENT OF ACT 74, MICH. P.A.1970

FOR CORNERS OF:-	LOCATED IN:-	CORNER CODE NUMBER
1. PUBLIC LAND SURVEY <u>36</u> Sec T. <u>1</u> N. R. <u>1</u> W.		<u>K-11, K-12, K-13</u>
2. PROPERTY CONTROLLING IN SECTION _____ T. _____ N. S. R. _____ E. W.		
3. MISCELLANEOUS PROPERTY IN SECTION _____ T. _____ N. S. R. _____ E. W.		
4. LOT NO. _____, RECORDED PLAT _____		
5. PRIVATE CLAIMS _____		

LIBER 2 PG 449

FILED

JUN 28 1 25 PM '73

**REGISTER OF DEEDS**  
*Emil M. Lewis*  
**INGHAM COUNTY, MICH.**  
REGISTER OF DEEDS STAMP AND  
FILING NUMBER

I, Ronnie M. Lester do hereby certify that under requirements of P.A. 74, Michigan P.A. of 1970, the corner points mentioned in lines 1 and 2 above (identified with circles on index code diagram - over) were, in a field survey on May 9 19 73, established, re-established, monumented, re-monumented, recovered or restored as expressed below and in conformance with regulations and rules therefore as required in the current manual of survey instructions of the United States Department of the Interior, Bureau of Land Management or by a decree of a court of law. Furthermore, that the corner points mentioned in lines 3, 4 and 5 above were, in a field survey on \_\_\_\_\_ 19\_\_\_\_, found, recovered, restored, established or re-established as expressed below and in conformance with the rules of the Michigan State Board of Registration for Land Surveyors or, by a Decree of a Court of law:

A. Description of original monument and accessories and/or subsequent restoration:

- K-11 Original monument and accessories obliterated
- K-12 Original monument and accessories obliterated
- K-13 Original monument and accessories obliterated

B. Description of corner evidence found and/or method applied in restoring or re-establishing corner:

- K-11 Set 1/2" bar 3' West Centerline Peacock Road and 3.5' South of Olds Road in place of nail and tag found on fence line North and 33' off iron capped with #19009. Measured distances in close accord with original government measurement.
- K-12 Set 1/2" bar midway and on line between NW and SW corners of Section. Fell on fence lines East and West and 2' East of Centerline of road
- K-13 Found T-bar on fences East and West and 4.5' of Centerline of road. Corner checks with witnesses.

C. Description of monument for corner and accessories established to perpetuate locating the position of the corner:

- K-11 NW Corner Section 36, T1N, R1W
  - Nail & Tag East side 60" oak, NNE, 49.78'
  - Nail & Tag North side 20" willow, SW, 76.94'
  - Nail & Tag SW side 15" hickory, NW, 49.67'
- K-12 W 1/4 Corner Section 36, T1N, R1W
  - Nail & Tag North side 36" oak, East, 29.36'
  - Nail & Tag North side 40" twin hickory, SW, 33.65'
  - Nail & Tag North side 30" maple, NW, 28.93'
- K-13 SW Corner Section 36, T1N, R1W
  - Nail & Tag NE side 8" walnut, NW, 49.18'
  - Nail & Tag South side 10" walnut, West, 32.88'
  - Nail & Tag SE side 10" walnut, SW, 58.39'

SIGNED BY Ronnie M. Lester DATE May 22 1973  
SURVEYOR'S MICHIGAN REGISTRATION NO. 18998

FOR STATE AND UNITED STATES AGENCIES:

SIGNED BY \_\_\_\_\_ DATE \_\_\_\_\_  
CHIEF OF SURVEY PARTY

APPROVED AND SIGNED BY \_\_\_\_\_ DATE \_\_\_\_\_  
MICHIGAN REGISTERED LAND SURVEYOR

(SEAL)

SURVEYOR'S MICHIGAN REGISTRATION NO. \_\_\_\_\_

548

Form No. ML M735  
DOUBLEDAY BROS. & CO., KALAMAZOO, MICH.

FORM APPROVED BY MICHIGAN STATE BOARD OF REGISTRATION, JAN. 28, 1971  
DISTRIBUTED BY MICHIGAN SOCIETY OF REGISTERED LAND SURVEYORS

# LAND CORNER RECORDATION CERTIFICATE

FILING REQUIREMENT OF ACT 74, MICH. P.A. 1970

LIBER

3 PG 153

FILED

FOR CORNERS OF— LOCATED IN— CORNER CODE NUMBER

1. PUBLIC LAND SURVEY 36 T. 1 N. R. 1 E. K-11, K-12, K-13

2. PROPERTY CONTROLLING IN SECTION 36 T. 1 N. R. 1 E.

3. MISCELLANEOUS PROPERTY IN SECTION T. N. R. E.

4. LOT NO. RECORDED PLAT

5. PRIVATE CLAIMS

JUL 11 10 56 AM '74

REGISTER OF DEEDS

Paul M. Lewis  
INGHAM COUNTY, MICH.

REGISTER OF DEEDS STAMP AND  
FILING NUMBER

I, **D. Scott** do hereby certify that under requirements of P.A. 74, Michigan P.A. of 1970 the corner points mentioned in lines 1 and 2 above (identified with circles on index code diagram—over) were, in a field survey on **September 25, 1973**, established, re-established, monumented, re-monumented, recovered or restored as expressed below and in conformance with regulations and rules therefore as required in the current manual of survey instructions of the United States Department of the Interior, Bureau of Land Management or by a decree of a court of law. Furthermore, that the corner points mentioned in lines 3, 4 and 5 above were, in a field survey on **September 25, 1973**, found, recovered, restored, established or re-established as expressed below and in conformance with the rules of the Michigan State Board of Registration for Land Surveyors or, by a Decree of a Court of law:

A. Description of original monument and accessories and/or subsequent restoration:

B. Description of corner evidence found and/or method applied in restoring or re-establishing corner:

K-11 - Found 1/2" iron pipe E Olds Road. Recovered with notes from Polaris Surveying, Lansing, Michigan.

K-12 - Found 1/2" iron rod 3" below gravel surface. Recovered with notes from Polaris Surveying, Lansing, Michigan.

K-13 - Found "T" shaped iron 2" below gravel E Peacock Road. Recovered with notes from Consumers Power Co., Jackson, Michigan.

C. Description of monument for corner and accessories established to perpetuate locating the position of the corner:

K-11 - NW Corner Section 36, TIN, RIW  
S 49° W, 36.8' Sign Post N 16° E, 25.02' Telephone Post  
N 59° W, 49.73' 10" Shag Bark Hickory S46°E 35.62' Telephone Post

K-12 - W 1/4 Corner Section 36, TIN, RIW  
S 84° E, 29.39' 20" White Oak S40°W 50.65' 26" Maple  
S 25° E, 55.80' 20" White Oak N68°W 28.96' 27" Maple

K-13 - SW Corner Section 36, TIN, RIW  
W 32.92' 6" Black Walnut S28°W 91.17' 15" Twin Oak  
N 26° W 49.22' 5" Black Walnut S86°E 17.4' 2" Dia. Iron gate post 5' high

SIGNED BY [Signature] DATE 5 JUL 1974

SURVEYOR'S MICHIGAN REGISTRATION NO. 12029

FOR STATE AND UNITED STATES AGENCIES:

SIGNED BY \_\_\_\_\_ DATE \_\_\_\_\_  
CHIEF OF SURVEY PARTY

APPROVED AND SIGNED BY \_\_\_\_\_ DATE \_\_\_\_\_  
MICHIGAN REGISTERED LAND SURVEYOR

SURVEYOR'S MICHIGAN REGISTRATION NO. \_\_\_\_\_

720

Form No. ML735  
DOUGLASS BROS. & CO., KALAMAZOO, MICH.

FORM APPROVED BY MICHIGAN STATE BOARD OF REGISTRATION, JAN. 28, 1971  
DISTRIBUTED BY MICHIGAN SOCIETY OF REGISTERED LAND SURVEYORS

# LAND CORNER RECORDATION CERTIFICATE

FILING REQUIREMENT OF ACT 74, MICH. P.A. 1970 **LIBER 3 PG 155**

FILED

FOR CORNERS OF— LOCATED IN— CORNER CODE NUMBER

1. PUBLIC LAND SURVEY 36 1 1 N. R. 1 W. M-12, M-13

2. PROPERTY CONTROL - 36 1 1 N. R. 1 W. M-12, M-13  
ING IN SECTION

3. MISCELLANEOUS 1. N. R. 1 W.  
PROPERTY IN SECTION

4. LOT NO. RECORDED PLAT

5. PRIVATE CLAIMS

JUL 11 10 56 AM '74

REGISTER OF DEEDS

*David M. Lewis*  
INGHAM COUNTY, MICH.

REGISTER OF DEEDS STAMP AND  
FILING NUMBER

1. **D. Scott** do hereby certify that under requirements of P.A. 74, Michigan P.A. of 1970 the corner points mentioned in lines 1 and 2 above (identified with circles on index code diagram) were, in a field survey on **June 1974**, established, re-established, monumented, re-monumented, recovered or restored as expressed below and in conformance with regulations and rules thereto as required in the current manual of survey instructions of the United States Department of the Interior, Bureau of Land Management or by a decree of a court of law. Furthermore, that the corner points mentioned in lines 3, 4 and 5 above were, in a field survey on **June 1974**, found, recovered, restored, established or re-established as expressed below and in conformance with the rules of the Michigan State Board of Registration for Land Surveyors or, by a Decree of a Court of law:

A. Description of original monument and accessories and/or subsequent restoration.

M-12 - Set 1/2 mile post  
S62W, 51 Links, 16" white oak, N37W, 61 Links, 18" black oak

M-13 - Set Post  
S49-1/2°W, 122 Links, 24" red oak, N54°W, 127 Links, 23" elm

B. Description of corner evidence found and/or method applied in restoring or re-establishing corner.

M-12 - Set concrete monument with plastic cap, with witnesses from  
Polaris Engineering, Inc.

M-13 - Found 3" dia. solid clay mon. set by Bean in 1873.  
Replaced with 20" dia. concrete mon. with 2" dia. brass cap.

C. Description of monument for corner and accessories established to perpetuate locating the position of the corner.

M-12 - Set concrete monument with plastic cap.  
S12°W, 11.28' 9" Ash, N62°E, 17.21' 15" Ash  
S69°E, 24.70', 30" Blackcherry

M-13 - Set 20" dia. concrete mon. with 2" dia. Brass Cap.  
S89°E, 50.57' Thornapple, N56.19' 14" Triple Basswood  
N00° 07' 36"E, 50.0' concrete mon., S89° 43' 05"W, 50.0' concrete mon.  
12" dia., 18" high

SIGNED BY

*Dwight H. Scott*

DATE

8 July 1974

SURVEYOR'S MICHIGAN REGISTRATION NO. 12029

FOR STATE AND UNITED STATES AGENCIES:

SIGNED BY

CHIEF OF SURVEY PARTY

DATE

APPROVED AND SIGNED BY

MICHIGAN REGISTERED LAND SURVEYOR

DATE

(SEAL)

SURVEYOR'S MICHIGAN REGISTRATION NO.

Form No. MLM735  
DUNLAP BROS. & CO., KALAMAZOO, MICH.

FORM APPROVED BY MICHIGAN STATE BOARD OF REGISTRATION, JAN. 28, 1971  
DISTRIBUTED BY MICHIGAN SOCIETY OF REGISTERED LAND SURVEYORS

# LAND CORNER RECORDATION CERTIFICATE

FILING REQUIREMENT OF ACT 74, MICH. P.A. 1970  
LIBER 311 157

FILED

FOR CORNERS OF--	LOCATED IN--	CORNER CODE NUMBER
1. PUBLIC LAND SURVEY 36	T. 1 N. R. 1 W.	L-11, L-13
2. PROPERTY CONTROLLED BY IN SECTION 36	T. 1 N. R. 1 W.	L-11, L-13
3. MISCELLANEOUS PROPERTY IN SECTION	T. 1 N. R. 1 W.	

JUL 11 10 56 AM '74

REGISTER OF DEEDS

*Carol M. Lewis*  
INGHAM COUNTY, MICH.

4. LOT NO. , RECORDED PLAT

5. PRIVATE CLAIMS

REGISTER OF DEEDS STAMP AND  
FILING NUMBER

I, **D. Scott** do hereby certify that under requirements of P.A. 74, Michigan P.A. of 1970 the corner points mentioned in lines 1 and 2 above identified with circles on index code diagram - over - were, in a field survey on **October 18, 1973**, established, re-established, monumented, re-monumented, recovered or restored as expressed below and in conformance with regulations and rules therefore as required in the current manual of survey instructions of the United States Department of the Interior - Bureau of Land Management or by a decree of a court of law. Furthermore, that the corner points mentioned in lines 3, 4 and 5 above were, in a field survey on **October 18, 1973**, found, recovered, restored, established or re-established as expressed below and in conformance with the rules of the Michigan State Board of Registration for Land Surveyors or, by a Decree of a Court of law:

A. Description of original monument and accessories and/or subsequent restoration:

L-13 - Set 1/2 mile post  
White Oak 7", N 68° E, 40 Links  
Dogwood 9", N 73° W, 32 Links

B. Description of corner evidence found and/or method applied in restoring or re-establishing corner:

L-11 - Found R.R. spike in road intersection. Recovered with notes from Polaris Surveying, Lansing, Michigan.

L-13 - Found 3/4" pinched iron pipe 2" below surface, and 1' west of E road. Recovered with notes from Polaris Engineering, Inc. Lansing, Michigan.

This corner recorded by Polaris Engineering, Inc.

C. Description of monument for corner and accessories established to perpetuate locating the position of the corner:

L-11 - N 1/4 corner Section 36, TIN, RIW  
S37° E, 57.87' Telephone Pole, N 17° W, 43.1 "Yield" sign post  
S46° W, 41.8' Street sign post, N58° E, 55.19 10" bitternut hickory

L-13 - S 1/4 Corner Section 36, TIN, RIW.  
S 52° W, 20.58', 20" oak  
N 85° W, 17.41', 18" hickory  
S 75° E, 25.73', 24" oak

SIGNED BY

*D. Scott*

DATE *8 July 1974*

SURVEYOR'S MICHIGAN REGISTRATION NO. 12029

FOR STATE AND UNITED STATES AGENCIES:

SIGNED BY..

CHIEF OF SURVEY PARTY

DATE

APPROVED AND SIGNED BY

MICHIGAN REGISTERED LAND SURVEYOR

DATE

(SEAL)

SURVEYOR'S MICHIGAN REGISTRATION NO.

722

Form No. MLM735  
DORRLEAY BROS. & CO., KALAMAZOO, MICH.

FORM APPROVED BY MICHIGAN STATE BOARD OF REGISTRATION, JAN. 28, 1971  
DISTRIBUTED BY MICHIGAN SOCIETY OF REGISTERED LAND SURVEYORS

# LAND CORNER RECORDATION CERTIFICATE

FILING REQUIREMENT OF ACT 74, MICH. P.A. 1970

Leslie Township, Ingham County USER 5 15

FOR CORNERS OF:-	LOCATED IN:-	CORNER CODE NUMBER
1. PUBLIC LAND SURVEY	T. 1 S., R. 1 E.	I-11, I-12, I-13, J-13, J-11, K-12
2. PROPERTY CONTROLLING IN SECTION	T. S., R. E.	
3. MISCELLANEOUS PROPERTY IN SECTION	T. S., R. E.	
4. LOT NO. _____, RECORDED PLAT _____		
5. PRIVATE CLAIMS _____		

OCT 11 8 17 AM '78

REGISTER OF DEEDS  
Ingham County, Mich.

REGISTER OF DEEDS STAMP AND FILING NUMBER

Ronald W. Keller RLS

do hereby certify that under requirements of P.A. 74, Michigan P.A. of 1970, the corner points mentioned in lines 1 and 2 above were, in a field survey on April 11, 1977, established, re-established, monumented, re-monumented, recovered or restored as expressed below and in conformance with regulations and rules therefore as required in the current manual of survey instructions of the United States Department of the Interior, Bureau of Land Management or by a decree of a court of law. Furthermore, that the corner points mentioned in lines 3, 4 and 5 above were, in a field survey on \_\_\_\_\_, 19\_\_\_\_, found, recovered, restored, established or re-established as expressed below and in conformance with the rules of the Michigan State Board of Registration for Land Surveyors or, by a Decree of a Court of law:

A. Description of original monument and accessories and/or subsequent restoration:

N/A

I-11 Found rebar in blacktop, no witness objects available

I-13 Found iron in blacktop in line with fence to North, Found iron East 1316.70' for 1/8 corner in Section 2, T 1 S, R 1 W

B. Description of corner evidence found and/or method applied in restoring or re-establishing corner:

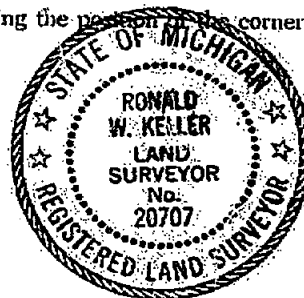
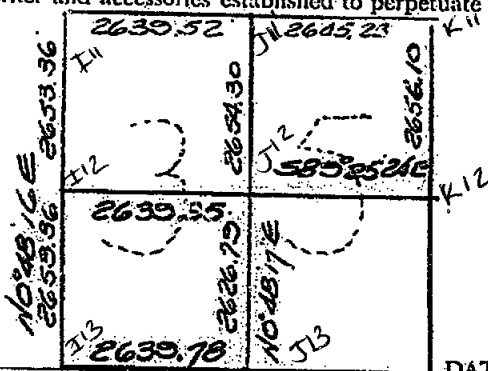
J-11 Found pinch pipe, Rd Sign N45E, 44.35', 36" Maple S45E, 44.46' 30" Maple S70E, 73.52'

K-12 Found Rebar, 18" oak East 29.35', 18" oak S80W 33.70', 18" oak S25W 50.70', 18" oak N80W 29.00', 18" oak S45E 55.80'

I-12 Set rebar 1/2 distance & on line between NW & SW Sectionn Corners

J-13 Found fireclay

C. Description of monument for corner and accessories established to perpetuate locating the position of the corner:



SIGNED BY

DATE OCT 11, 1978

SURVEYOR'S MICHIGAN REGISTRATION NO. 2707

(SEAL)

FOR STATE AND UNITED STATES AGENCIES:

SIGNED BY

DATE

CHIEF OF SURVEY PARTY

APPROVED AND SIGNED BY

DATE

MICHIGAN REGISTERED LAND SURVEYOR

(SEAL)

SURVEYOR'S MICHIGAN REGISTRATION NO.

FORM APPROVED BY MICHIGAN STATE BOARD OF REGISTRATION, JAN. 28, 1971  
REVISED MAY 14, 1975

MAY PLACE SKETCH ON BACK OR ATTACHED SHEET

# LAND CORNER RECORDATION CERTIFICATE

FILING REQUIREMENT OF ACT 74, MICH. P.A. 1970

South  $\frac{1}{4}$  Post

Southeast Corner, East  $\frac{1}{4}$  Post

Section 26

Leslie Township

FOR CORNERS OF—

LOCATED IN—

CORNER CODE NUMBER

1. PUBLIC LAND SURVEY T. 1 N. 1 E. 1 W.

J-11, K-11, K-10

2. PROPERTY CONTROLLING IN SECTION T. N. S. R. E. W.

3. MISCELLANEOUS PROPERTY IN SECTION T. N. S. R. E. W.

4. LOT NO. , RECORDED PLAT

5. PRIVATE CLAIMS

LIBER

6 PG 13

FILED

FEB 8 9 29 AM '80

REGISTER OF DEEDS

*Paula Johnson*  
INGHAM COUNTY, MICH.

REGISTER OF DEEDS STAMP AND FILING NUMBER

I, Ronald W. Keller, do hereby certify that under requirements of P.A. 74, Michigan P.A. of 1970, the corner points mentioned in lines 1 and 2 above were, in a field survey on January, 1980, established, re-established, monumented, re-monumented, recovered or restored as expressed below and in conformance with regulations and rules therefore as required in the current manual of survey instructions of the United States Department of the Interior, Bureau of Land Management or by a decree of a court of law. Furthermore, that the corner points mentioned in lines 3, 4 and 5 above were, in a field survey on \_\_\_\_\_, 19\_\_\_\_, found, recovered, restored, established or re-established as expressed below and in conformance with the rules of the Michigan State Board of Registration for Land Surveyors or, by a Decree of a Court of law:

A. Description of original monument and accessories and/or subsequent restoration:

B. Description of corner evidence found and/or method applied in restoring or re-establishing corner:

J-11 South  $\frac{1}{4}$  Post

Found Pinched Pipe

K-11 Southeast Corner

Found Pinched Pipe 2' West of blacktop centerline to South & 3' South of East - West blacktop centerline

K-10 East  $\frac{1}{4}$  Post

Found Stone; set capped iron 0.2' South; inline with East & West fence and near alignment with fence to North

C. Description of monument for corner and accessories established to perpetuate locating the position of the corner:

J-11 South  $\frac{1}{4}$  Post

N 45° E Road Sign 44.0'

S 45° E 36" Maple 44.05'

S 60° E 30" Maple 73.7'

South E. Leg of Direc. sign 18.0'

K-11 Southeast Corner

North Tele Pole 24.95'

N 30° W 20" Oak 34.55'

N 50° W 12" Hick. 49.72'

S 45° W Road Sign 36.95'

K-10 East  $\frac{1}{4}$  Post

N 30° E 12" Twin Ash 21.2'

N 60° E 8" Trip. Cherry 31.02'

N 85° W 10" Ash 19.1'

East 4" Ash 3.6'

SIGNED BY

DATE

SURVEYOR'S MICHIGAN REGISTRATION NO. 20707

FOR STATE AND UNITED STATES AGENCIES:

SIGNED BY

DATE

APPROVED AND SIGNED BY

DATE

CHIEF OF SURVEY PARTY

MICHIGAN REGISTERED LAND SURVEYOR

(SEAL)

SURVEYOR'S MICHIGAN REGISTRATION NO.

FORM APPROVED BY MICHIGAN STATE BOARD OF REGISTRATION, JAN. 28, 1971  
REVISED MAY 14, 1975

1769

MAY PLACE SKETCH ON BACK OR ATTACHED SHEET



LAND CORNER RECORDATION CERTIFICATE  
Filing Requirement of Act 74, Mich. P.A. 1970

For corners in BUNKERHILL TOWNSHIP

INGHAM COUNTY

Located In:

Corner Code #

1. Public Land Survey

T 1N R 1E

A-11

2. Property Controlling  
in Section

S T R

3. Miscellaneous  
Property in Sec.

S T R

Paula Johnson  
INGHAM COUNTY  
REGISTER OF DEEDS  
OFFICIAL SEAL



L-11 P-51

CRNR 17.00

2003-096809



2003-096809

Page: 1 of 2

10/31/2003 08:12A

Register of Deeds Stamp & File Number

4. Lot No. \_\_\_\_\_, Recorded Plat \_\_\_\_\_

5. Private Claims \_\_\_\_\_

I, Maurice H. Mahieu, in a field survey on June 30, 2003, do hereby state that under requirements of P.A. 74, Michigan P.A. of 1970, the corner points mentioned in lines 1 and 2 above were in conformance with regulations and rules therefore as required in the current manual of survey instructions of the United States Department of the Interior, Bureau of Land Management or by a decree of a Court of Law and/or that the corner points mentioned in lines 3, 4 and 5 above were in conformance with the rules of the Michigan Board of Land Surveyors or by a Decree of a Court of Law; established, re-established, monumented, recovered, found as expressed below:

NOTE: Not more than 2 corners, all in the same town and range, may be recorded on this certificate.

	A	B	C	D	E	F	G	H	I	J	K	L	M
1													
2	6		5		4		3		2		1		
3													
4	7		8		9		10		11		12		
5													
6	18		17		16		15		14		13		
7													
8	19		20		21		22		23		24		
9													
10	30		29		28		27		26		25		
11													
12	31		32		33		34		35		36		
13													

A. Description of original monument and accessories and/or subsequent restoration:

1. Original corner set by J. Wampler January 30, 1826; 35.84 chains, intersect meridian, witnessed by: Elm 16" S 61 1/2 E 20; Elm 9" N 42 E 18.
2. Book 3, Page 70 of County Surveyors Records shows a survey by A. Jackson C.S. on August 7, 1856. Witnesses: Elm 16" S 61 1/2 E 20; DO 9" N 42 E 18.
3. Book 3, Page 23 of County Surveyors Records shows a survey by A. P. Drake on Feb. 12, 1877 of Section 30. A-11 was a black walnut stake witnessed by Swamp Oak 14" S 7° E 29 1/4 lks. Measured 26.18 ch (1727.88 to M-10).

B. Description of corner evidence found and/or method applied in restoring or reestablishing corner:

Excavated 3' x 3' hole 2' deep on line with M-10 and M-11, Leslie Twp. T1N, R1W, at prorated County Surveyor Distance found remains of old North-South wire fence. Found no evidence of corner. Measured between A-13 and A-10, measured 7894.57'. Prorated position of corner based on County Surveyors Jackson and Drake and set corner on standard township line delineated by M-11 & M-10. See back for proration. Set 3/4" x 24" form pin with 2 1/2" dia. aluminum cap stamped "PA 345, PS #28414". Corner falls in North-South fence line. Farm field to NE-NW & SE. Woods to SW.

C. Description of monument for corner and accessories established to perpetuate locating the position of the corner:

Set 3/4" x 24" smooth iron rod and 2 1/2" aluminum cap stamped PA 345, PS #28414, 1' below grade, witnessed by:

Set Nail and Tag #28414 East side 24" Walnut, S 45° W 42.98'

Set Nail and Tag #28414 North side 15" Walnut S 86° W 93.38'

Set Nail and Tag #28414 East side 21" Walnut NSW 150.07'

Found 3/4" rod & cap #18994 (Ron Helsel) (M-11, T1N, R1W) South 912.93'

Signed by

*Maurice H. Mahieu*

Date

10-03-03

Surveyor's Michigan License No. 28414



P.A. 345 INGHAM COUNTY  
PEER APPROVED 8/5/2003 ML

FORM APPROVED BY MICHIGAN STATE BOARD OF PROFESSIONAL SURVEYORS, JAN. 28, 1971

REVISED MAY 14, 1975

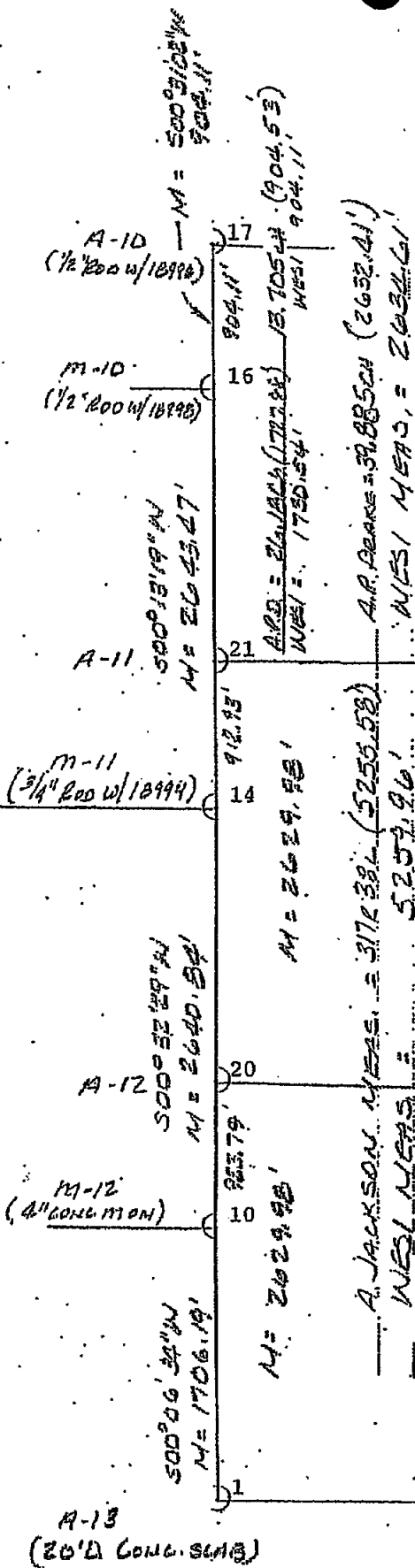
REVISED JAN., 1983

REVISED OCT., 1995

LESLIE TWP. TWP. R1E

SECTION 25

SECTION 30



1:1000

BUNKER HILL TWP. TWP. R1E

LAND CORNER RECORDATION CERTIFICATE  
Filing Requirement of Act 74, Mich. P.A. 1970

For corners in BUNKERHILL TOWNSHIP

INGHAM COUNTY

Located In:

Corner Code #

1. Public Land Survey

T 1N R 1E

A-12

2. Property Controlling  
in Section

S T R

3. Miscellaneous  
Property in Sec.

S T R

Paula Johnson  
INGHAM COUNTY  
REGISTER OF DEEDS  
OFFICIAL SEAL



L-11 P-53

CRNR 17.00

2003-096810



2003-096810

Page: 1 of 2

10/31/2003 08:12A

Register of Deeds Stamp & File Number

4. Lot No. \_\_\_\_\_, Recorded Plat \_\_\_\_\_

5. Private Claims \_\_\_\_\_

I, Maurice H. Mahieu, in a field survey on June 30, 2003, do hereby state that under requirements of P.A. 74, Michigan P.A. of 1970, the corner points mentioned in lines 1 and 2 above were in conformance with regulations and rules therefore as required in the current manual of survey instructions of the United States Department of the Interior, Bureau of Land Management or by a decree of a Court of Law and/or that the corner points mentioned in lines 3, 4 and 5 above were in conformance with the rules of the Michigan Board of Land Surveyors or by a Decree of a Court of Law; established, re-established, monumented, recovered, found as expressed below:

NOTE: Not more than 2 corners, all in the same town and range, may be recorded on this certificate.

A. Description of original monument and accessories and/or subsequent restoration:

1. Original monument not set in original GLO Survey.

2. Book 3, Page 70 of the County Surveyor's Records shows a survey by A. Jackson on August 7, 1856. He did not set this corner as there was common ownership on both sides of 1/4 line.

B. Description of corner evidence found and/or method applied in restoring or reestablishing corner:

Excavated 2' x 2' x 1" deep hole on line with M-11 and M-12, Leslie Twp. at approximate prorated County Surveyor Distance. Found North-South wire fence through 24" Maple, East 6.5'. Found no further evidence of corner. Swampy area water table 6" below grade. Set 3/4" x 24" form pin with aluminum cap stamped "PA 345 PS#28414" halfway between A-13 & A-11 and on line between M-11 & M-12, T1N, R2W. Established corner in accordance to standard methods. No other evidence to dispute this location. See back for distances.

C. Description of monument for corner and accessories established to perpetuate locating the position of the corner:

Set 3/4" x 24" smooth iron rod and 2 1/2" aluminum cap stamped PA 345, PS #28414, witnessed by:

Set Nail and Tag #28414 North side 12" Maple, S 85° W 16.31'

Set Nail and Tag #28414 West side 32" Maple N 11° E 65.65'

Set Nail and Tag #28414 SE side 12" Maple N 43° E 29.52'

Set Nail and Tag #28414 West side 24" Maple S 21° W 43.21'

Signed by

*Maurice H. Mahieu*

Surveyor's Michigan License No. 28414

Date

10-03-03



FORM APPROVED BY MICHIGAN STATE BOARD OF PROFESSIONAL SURVEYORS, JAN. 28, 1971  
REVISED MAY 14, 1975

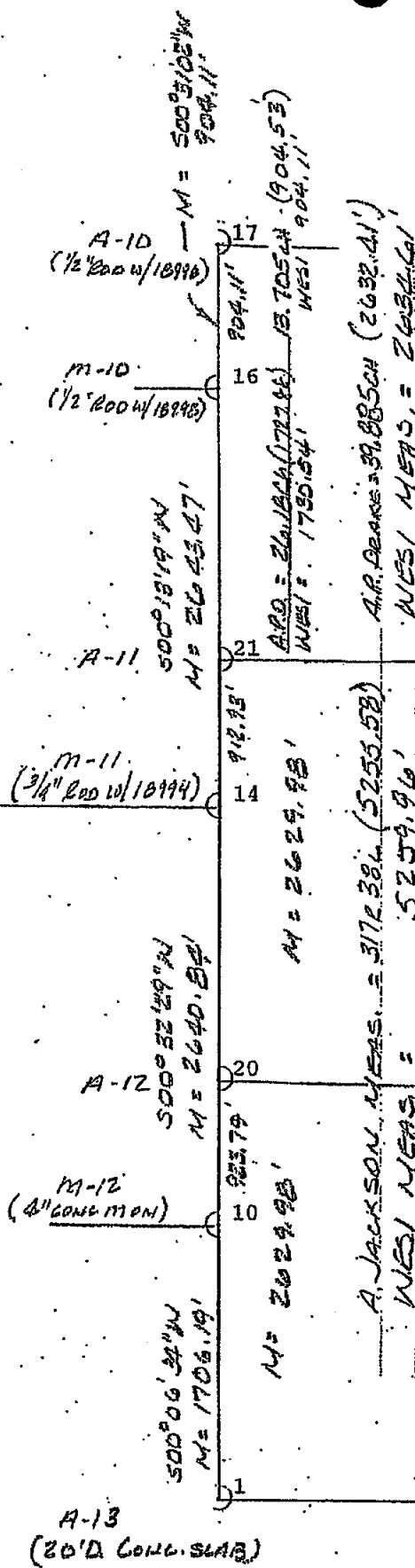
REVISED JAN. 1983  
REVISED OCT., 1995

P.A. 345 INGHAM COUNTY  
PEER APPROVED: 8/5/2003 ML

LESLIE TWP. T14 R14

SECTION 36

SECTION 25



SECTION 31

SECTION 30

SECTION 25

1:1000

BUNKER HILL TWP. T14 R14



2003-096810  
Page: 2 of 2  
10/31/2003 08:12A

LAND CORNER RECORDATION CERTIFICATE  
Filing Requirement of Act 74, Mich. P.A. 1970

For corners in BUNKERHILL TOWNSHIP

INGHAM COUNTY

Located In:

Corner Code #

1. Public Land Survey

T 1N R 1E

A-13

2. Property Controlling  
in Section

S T R

3. Miscellaneous  
Property in Sec.

S T R

Paula Johnson  
INGHAM COUNTY  
REGISTER OF DEEDS  
OFFICIAL SEAL



L-11 P-55

CRNR 17.00

2003-096811



2003-096811

Page: 1 of 2

10/31/2003 08:12A

Register of Deeds Stamp & File Number

4. Lot No. \_\_\_\_\_, Recorded Plat \_\_\_\_\_

5. Private Claims \_\_\_\_\_

I, Maurice H. Mahieu, in a field survey on June 30, 2003, do hereby state that under requirements of P.A. 74, Michigan P.A. of 1970, the corner points mentioned in lines 1 and 2 above were in conformance with regulations and rules therefore as required in the current manual of survey instructions of the United States Department of the Interior, Bureau of Land Management or by a decree of a Court of Law and/or that the corner points mentioned in lines 3, 4 and 5 above were in conformance with the rules of the Michigan Board of Land Surveyors or by a Decree of a Court of Law; established, re-established, monumented, recovered, found as expressed below:

NOTE: Not more than 2 corners, all in the same town and range, may be recorded on this certificate.

A. Description of original monument and accessories and/or subsequent restoration:

1. Original monument set by J. Wampler on January 19, 1826, West on South boundary of Sec. 31; 13.97 Hickory 13" Dia. in Marsh; 31.23 Run 16 lks wide course South; 35.50 intersect meridian; 14.18 chs (935.88') North of post corner of T's 1N & 1S, R1W in marsh set post, Tam. 9 in S 38° W 73 lks. No other bearing tree.
2. Book 3, Page 70 of the County Surveyors records show a survey by A. Jackson C.S. on August 7, 1856. Witness: Tam 9° S 38 W 75 lks; No other tree. Measured 145.6 (2396.46') to C-13, 317r 38L (5255.57') to A-11.
3. An Act 74 LCRC recorded in Liber 3, Page 149 on July 11, 1974 by Dwayne Scott, PS 12029, notes "Found pointed stone set by Aaron Jackson in 1856. Replaced with 20' dia. concrete monument with 2' dia. brass cap." Witnessed by S 78° E 31.18' Clump 5 Maple; S 00° 07' 36" W 50.0' conc. mon. 12' diameter 18" high; S 89° 31' 09" E 50.00' Concrete Mon. 12' dia. 18" high; S 3° W 42.30' 8" Maple.

(Continued On Back)

B. Description of corner evidence found and/or method applied in restoring or reestablishing corner:

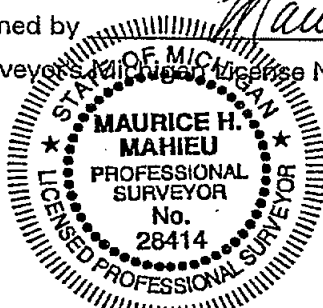
Found raised 20' diameter concrete pad with brass cap missing. Screwed 2 ½" Aluminum Remon. Cap #28414 to center of conc. pad. Accepted corner as best perpetuation of County Surveyors corner. Measured 1706.19' to M-12 (T1N, R1W) See back for further measurements.

C. Description of monument for corner and accessories established to perpetuate locating the position of the corner:

Found Raised 20' diameter concrete pad, screwed 2 ½" aluminum remon. cap #28414 to center, witnessed by:  
Found 12" diameter concrete monument S85°W 50.03'  
Found 12" diameter concrete monument South 49.94'  
Found overgrown Nail East side 9" Poplar and Set Nail and Tag #28414 above N 15° W 17.47'  
Found overgrown Nail SW side 18" Poplar and Set Nail and Tag #28414 above N 45° W 16.08'

Signed by Maurice H. Mahieu  
Surveyors Michigan License No. 28414

Date 10-03-03



FORM APPROVED BY MICHIGAN STATE BOARD OF PROFESSIONAL SURVEYORS, JAN. 28, 1971  
REVISED MAY 14, 1975

REVISED JAN., 1983  
REVISED OCT., 1995

P.A. 345 INGHAM COUNTY  
PEER APPROVED 8/5/2003 MC

4. An Act 132 survey by Dwayne Scott, PS 12029, dated September 13, 1974, Liber 2, Page 94, Ingham County Records. Corner established as 20' dia. conc. monument with 2' dia. brass cap, witnessed by S 78° E 31.16' clump of maples; S 00° 07' 36" W 50', 12" conc. mon; S 89° 31' 09" E 50.0' 12" conc. mon. Measured 937.64' to M-13 (T1N, R1W) 2396.92' to C-13.
5. An Act 132 survey by Ron Helsel PS #18994 recorded in Liber 7, Page 145 on April 8, 1994. Found raised 20' diameter concrete pad with 2' diameter brass disk in center. Witnessed by: Found 12" dia. concrete monument S 00° 07' 36" W 50.00'; Found 12" dia. concrete monument, S 89° 31' 09" E 50.00'; Set Nail and Tag #18994 in South side of 14" Birch, N 47° W 15.84'; Set Nail and Tag #18998 in East side of 6" Birch, N 08° W 17.49'.



2003-095811

Page: 2 of 2

10/31/2003 08:12A

