

LAND CORNER RECORDATION CERTIFICATE
Filing Requirement of Act 74, Mich. P.A. 1970

For corners in

Locke Township

Ingham
(County)

Located In:

Corner Code #

1. Public Land Survey

T 4N R 2E A-2

T R

T R

T R

2. Property Controlling
in Section

S T R

S T R

3. Miscellaneous
Property in Sec.

S T R

S T R

B: 13 P: 260 10/21/2008 02:52 PM
2008-041036 LAND CORNERS Receipt #47587
Paula Johnson, Ingham County, Michigan

Pages: 2



Register of Deeds Stamp & File Number

4. Lot No. _____, Recorded Plat _____

5. Private Claims _____

I, Gilbert M. Barish, in a field survey on 11 June, 2008 do hereby state that under requirements of P.A. 74, Michigan P.A. of 1970, the corner points mentioned in lines 1 and 2 above were in conformance with regulations and rules therefore as required in the current manual of survey instructions of the United States Department of the Interior, Bureau of Land Management or by a decree of a Court of Law and /or that the corner points mentioned in lines 3, 4 and 5 above were in conformance with the rules of the Michigan Board of Land Surveyors or by a Decree of a Court of Law; established, re-established, monumented, recovered, found as expressed below:

NOTE: Not more than 2 corners, all in the same town and range, may be recorded on this certificate.

A. Description of original monument and accessories and/or subsequent restoration:

1) **Corner not originally established during Joseph Wamplers Apr. 1826 Survey**

| | A | B | C | D | E | F | G | H | I | J | K | L | M |
|----|----|---|----|---|----|---|----|---|----|---|----|---|---|
| 1 | | | | | | | | | | | | | |
| 2 | 6 | | 5 | | 4 | | 3 | | 2 | | 1 | | |
| 3 | | | | | | | | | | | | | |
| 4 | 7 | | 8 | | 9 | | 10 | | 11 | | 12 | | |
| 5 | | | | | | | | | | | | | |
| 6 | 18 | | 17 | | 16 | | 15 | | 14 | | 13 | | |
| 7 | | | | | | | | | | | | | |
| 8 | 19 | | 20 | | 21 | | 22 | | 23 | | 24 | | |
| 9 | | | | | | | | | | | | | |
| 10 | 30 | | 29 | | 28 | | 27 | | 26 | | 25 | | |
| 11 | | | | | | | | | | | | | |
| 12 | 31 | | 32 | | 33 | | 34 | | 35 | | 36 | | |
| 13 | | | | | | | | | | | | | |

(Continued on Sheet 2)

B. Description of corner evidence found and/or method applied in restoring or reestablishing corner:

Found 1/2" bar and cap #25837 (David L. Clifford, P.S.) just outside the North edge of Wilgus Road at the intersection of Wilgus and Shaftsbury Roads. The position compares favorably with a GLO prorated calculated location.

Accepted the location of the 1/2" bar and cap as the best available evidence for the corner location and moved it 0.44 feet west along a line from B-2 to A-2 to intersect the standard line. Set a 3/4" by 24" smooth steel bar and Ingham County cap stamped "PS 47942".

Measurements based on GPS observations on 02 June, 2008:

(A-2 to A-1) - 3,659.75' (A-2 to B-2) - 1,724.70' (A-2 to A-3) - 2,654.68'

C. Description of monument for corner and accessories established to perpetuate locating the position of the corner:

Set standard Ingham County 3/4" X 24" smooth steel bar and cap stamped "P.A. 345, PS 47942" on the North edge of Wilgus Road in the grass shoulder 0.5 feet below the surface.

Set Ingham Co. nail & tag in the South face of a 36" Oak
Found nail & tag #25832 in the Northwest face of a Util. Pole
Found nail & tag #41917 (Ron Harris) in the Northeast face of a Util. Pole
Found nail & tag #25832 in the West face of a 24" Maple
Found nail & tag #25832 in the East face of a Util. Pole
Found Bar and Cap #25837
M-2, East 1/4 Corner, Section 1, Williamstown Twp.

N61°W 31.00'
N76°E 25.68'
S19°E 49.94'
S04°E 67.24'
S29°W 69.42'
S89°E 0.44'
S05°W 24.51'

Notes:

- 1) Witness bearings reference magnetic North. The magnetic declination at the time of observations is 6°20' West
- 2) Set nail and tag is a Magnetic nail and 1-1/2" aluminum tag stamped "INGHAM WITNESS PA 345"

P.A. 345 INGHAM COUNTY

PEER APPROVED 8/19/2008 mc

Signed by

Gilbert M. Barish

Date

28-Aug-2008

Surveyor's Michigan License No. 47942



- 2) **11-November-1977** Corner referenced in the CETA file by L. Bryan (25832) and R. Lester (18998). "A-2 is lost. Set monument from attached inverses and witnesses for CRC preparation". *The notes describing the corner placement procedure on the traverse sheet did not show well enough to read.*
A-2 Locke, ½" bar and cap (RLS #18998)
W. side 36" Oak N50°W – 30.10'
S. side 14" Oak N80°E – 129.35'
W. side 32" Maple S35°E – 42.86'
W. side 32" Maple S20°E – 67.05'
- 3) **02-Nov-1984** Corner referenced in an unrecorded P.A. 132 survey by L. Bryan #25832. Survey calls for a reset 1/2" bar and cap #25832, from the Ingham County Remon Witness Sheet with the following witnesses:
Corner lands 3' East fence line North and 15' North centerline Wilgus Road
Found Nail and tag #18998 Northeast side 36" Oak, N50°W, 30.10'
Found Nail and tag west side 32" Maple, S35°E, 42.76'
Found Nail and tag west side 32" Maple, S20°E, 67.05'

Measurements: (A-2 to B-2) S84°00'14"E – 1,724.58 feet
(A-2 to A-1) N00°10'08"W – 3,659.27 feet
(A-2 to A-3) S00°08'26"E – 2,654.17 feet
- 4) **21-April-1995** Corner referenced in un recorded field notes by David Clifford, P.S. #25837
"Re set Locke, A-2 W ¼ Cor. Sec. 6, LAB unrecorded survey 11/2/84, ½" B&C 25832 3 feet east of fence north, 15 feet N. of CL Wilgus
N&T 18998 NE side 36" Oak, N50W, 30.10
N&T W. side 32" Maple S35E, 42.76
N&T W. side 32" Maple S20E, 67.05'
Fd. 1/2" B&C #25832 (badly bent) replaced with ¾" pipe and cap #25837"

LAND CORNER RECORDATION CERTIFICATE
Filing Requirement of Act 74, Mich. P.A. 1970

For corners in

Locke Township

Ingham
(County)

Located In:

Corner Code #

1. Public Land Survey

T 4N R 2E

A-3

2. Property Controlling
in Section

S T

3. Miscellaneous
Property in Sec.

S T

4. Lot No. _____, Recorded Plat _____

5. Private Claims _____

I, Gilbert M. Barish, in a field survey on 11 June, 2008 do hereby state that under requirements of P.A. 74, Michigan P.A. of 1970, the corner points mentioned in lines 1 and 2 above were in conformance with regulations and rules therefore as required in the current manual of survey instructions of the United States Department of the Interior, Bureau of Land Management or by a decree of a Court of Law and /or that the corner points mentioned in lines 3, 4 and 5 above were in conformance with the rules of the Michigan Board of Land Surveyors or by a Decree of a Court of Law; established, re-established, monumented, recovered, found as expressed below:

NOTE: Not more than 2 corners, all in the same town and range, may be recorded on this certificate.

A. Description of original monument and accessories and/or subsequent restoration:

- 1) **01-April-1826** – Corner set by Deputy Surveyor Joseph Wampler
Page 65 of the Ingham County GLO notes.
Set post at 64.56 (4,260.96)
Int W In 5 lks S of P
Set post int Cor of 6 and 7 fw
NO 12 N38E, 53 lks.
NO 16 N89E, 63 lks.

(Continued on Sheet 2)

B. Description of corner evidence found and/or method applied in restoring or reestablishing corner:

Found a 1/2" steel bar in concrete in a monument box at the centerline of Shaftsbury Road per item 6 above nominally 0.5' below the surface of the asphalt. Accepted the location of the corner based on the recovery of stones discovered during an excavation as described in Item 5 above by R. Lester, P.S..

Accepted the location of the found concrete monument and set an aluminum Ingham County remonumentation cap stamped #47942 on top of the 1/2" bar in concrete in the monument box. The point is on the standard township line.

Measurements based on GPS observations on 02 June, 2008:

(A-3 to A-2) – 2,654.68' (A-3 to B-3) – 1,644.39' (A-3 to A-4) – 2,643.17'

C. Description of monument for corner and accessories established to perpetuate locating the position of the corner:

Set standard Ingham County cap stamped "P.A. 345, PS 47942" on an existing 1/2" steel bar in concrete in a monument box in the centerline of Shaftsbury Road (Asphalt).

| | | |
|---|-------|--------|
| Found nail & tag #18998 in the Southwest cor. of a fence post | S38°E | 41.15' |
| Found nail & tag #18998 in the North face of a 24" Red Maple | S74°E | 29.73' |
| Found remon nail & tag in the North face of a Util. pole | S65°W | 30.10' |
| Found nail & tag #25832 in the Northwest face of a 30" Oak | N40°E | 44.21' |
| M-3, Southeast Corner, Section 1, Williamstown Twp. | North | 3.35' |

Notes:

- 1) Witness bearings reference magnetic North. The magnetic declination at the time of observations is 6°20' West
2) Set nail and tag is a Magnetic nail and 1-1/2" aluminum tag stamped "INGHAM WITNESS PA 345"

Signed by Gilbert M. Barish

Date 28-Aug-2008

Surveyor's Michigan License No. 47942

B: 13 P: 261 10/21/2008 02:52 PM
2008-041037 LAND CORNERS Receipt #47587
Paula Johnson, Ingham County, Michigan

Pages: 2



Register of Deeds Stamp & File Number

| | A | B | C | D | E | F | G | H | I | J | K | L | M |
|----|---|----|---|----|---|----|---|----|---|----|---|----|---|
| 1 | | | | | | | | | | | | | |
| 2 | | 6 | | 5 | | 4 | | 3 | | 2 | | 1 | |
| 3 | | | | | | | | | | | | | |
| 4 | | 7 | | 8 | | 9 | | 10 | | 11 | | 12 | |
| 5 | | | | | | | | | | | | | |
| 6 | | 18 | | 17 | | 16 | | 15 | | 14 | | 13 | |
| 7 | | | | | | | | | | | | | |
| 8 | | 19 | | 20 | | 21 | | 22 | | 23 | | 24 | |
| 9 | | | | | | | | | | | | | |
| 10 | | 30 | | 29 | | 28 | | 27 | | 26 | | 25 | |
| 11 | | | | | | | | | | | | | |
| 12 | | 31 | | 32 | | 33 | | 34 | | 35 | | 36 | |
| 13 | | | | | | | | | | | | | |

P.A. 345 INGHAM COUNTY
PEER APPROVED 8/19/2008 KL



Part "A" continued – A-3, T4N, R2E, Ingham County, Michigan

- 2) **23-Feb-1956** – County Surveyor Records by A. Jackson "corner not identified".
Witnesses: W Oak 16 N89E 65 lks.
D O 12 N38E 53 lks.
- 3) **10-August-1972** – Corner referenced in a recorded survey by W. Lee Paddison, P.S. #7256 as recorded in Liber 1 page 397 of Surveys, Ingham County Records.
N.W. Corner Sec. 7, T.4 N., R.2 E.
Locke Twp., Ingham Co., Michigan
Existing 1 in. iron pipe
C/L Shaftsbury Road
Fence East
S. 54 W. 31.82 ft. nail N. base P. pole
N. 43 E. 41.10 ft. nail N. base 30 in. W. oak
S. 79 30 E. 29.97 ft. nail N. base 24 in S. maple
- 4) **25-May-1978** - Land Corner Recordation Certificate by W. Lee Paddison, P.S. #7256 as recorded in Liber 4, page 204 of corners.

Part "A" states: Surveyed in April 1826 by Joseph Wampler

Part "B" states: A-3 NW. Corner Frl. Sec. 7, T.4N., R.1E.

Found in place 1 inch iron pipe located in the center of Shaftsbury Road about 4 inches below the road surface. In line with the property line fence east.

Part "C" states: Witnesses established for the monument found at A-3

East 33.0 ft. 1 inch iron pipe set in the fence line east

N. 43 E. 41.10 ft. to a 10d nail in the N. base 30 inch white oak.

S. 72 30 E. 29.97 ft. to a 10d nail in N. base 24 inch maple

S. 54 W. 31.82 ft. to a 10d nail in N. base power pole.

- 5) **12-June-1979** - Land Corner Recordation Certificate by Ronnie M. Lester, P.S. #18998 as recorded in Liber 5, page 243 of corners.

Part "A" states:

A-3

Post set in original government survey by J. Wampler dated between March 29 and April 6, 1826.

Corner referred to in a survey by A. Jackson, County Surveyor, February 23, 1856 (v.2, p. 273).

Part "B" states: A-3

Excavated a hole 3' x 4' to an average depth of 2.0' on the centerline of Shaftsbury Road and ±3.5' north of fence line to the east. No physical evidence of corner was found. Excavated a second hole 5' x 5' to an average depth of 2.0' on the centerline of Shaftsbury Road and ±3.5' south of fence line to the east. Found two large pointed rocks, one directly below the other at a depth of 2.0' below road surface on the centerline of Shaftsbury Road and ±1.0' south of fence line to the east. Set ½" iron bar in place of top pointed rock on Nov. 15, 1977 until further measurements could be made. Measured south ±5290' to A-5 Locke and north 3.3' to M-3 Williamston, T4N-R1E, both in close accord with G.L.O. distances. Accepted top pointed rock for corner. Excavation conducted by Ingham County Survey and Remonumentation Project crew.

Part "C" states: A-3

NW Corner, Section 7, T4N-R2E

Set 4" x 36" concrete monument with 1/2" x 38" rod with cap #18998 in location of 1/2" iron bar and pointed rock described above:

Nail & tag, #18998, southwest corner of fence post, SE, 41.07'

Nail & tag, #18998, north side telephone pole, WSW, 30.17'

Nail & tag, #18998, northwest side 30" Oak, NE, 43.65'

Nail & tag, #18998, north side 24" Maple, ESE, 29.76'

Concrete monument, M-3 Williamston T4N-R1E, R.L.S. #18998, North, 3.3'

- 6) **19-July-1979** – Corner referenced in a recorded survey by Larry A. Bryan, P.S. #25832 as recorded in Liber 3 page 931 of Surveys, Ingham County Records.

Northwest corner Section 7, T4N, R2E

Fd. 1/2" bar & cap #18998 in concrete

Fd. nail & tag #18998 North side 30" oak, S80E, 29.74'

Fd. nail & tag #18998 North side power pole, S70W, 30.12'

Fd. nail & tag #18998 West side 32" oak, N40E, 43.66'

Measurements: (A3 to B3) recorded S84°01'35"E – 1,644.83 feet

(A3 to A4) recorded South – 2,644.30 feet

- 7) **24-March-1980** - Corner referenced in a recorded survey by Austin C. Williams, P.S. #21275 as recorded in Liber 3 page 1221 of Surveys, Ingham County Records.

Southwest corner of Sec. 6, T4N-R2E

N43°E 41.10' nail N. base 30" White Oak

S72°30'E 29.97' nail N. base 24" Maple

S54°W 31.82' nail N. base power pole

- 8) **13-December-1990** - Corner referenced in a recorded survey by Austin C. Williams, P.S. #21275 as recorded in Liber 6 page 591 of Surveys, Ingham County Records.

Southwest corner Sec. 6, T4N, R2E

N43°E 41.10' nail N. base 30" White Oak

S72°E 29.97' nail N. base 24" Maple

S54°W 31.82' nail N. base power pole

NO FURTHER INFORMATION PROVIDED

LAND CORNER RECORDATION CERTIFICATE
Filing Requirement of Act 74, Mich. P.A. 1970

For corners in

Locke Township

Ingham
(County)

Located In:

Corner Code #

1. Public Land Survey

T 4N

R 2E

B-1

T

R

T

R

T

R

2. Property Controlling
in Section

S

T

R

3. Miscellaneous
Property in Sec.

S

T

R

S

T

R

B: 13 P: 263 10/21/2008 02:52 PM
2008-041039 LAND CORNERS Receipt #47587
Paula Johnson, Ingham County, Michigan

Pages: 2



Register of Deeds Stamp & File Number

4. Lot No. _____, Recorded Plat _____

5. Private Claims _____

I, Gilbert M. Barish, in a field survey on 18 June, 2008 do hereby state that under requirements of P.A. 74, Michigan P.A. of 1970, the corner points mentioned in lines 1 and 2 above were in conformance with regulations and rules therefore as required in the current manual of survey instructions of the United States Department of the Interior, Bureau of Land Management or by a decree of a Court of Law and/or that the corner points mentioned in lines 3, 4 and 5 above were in conformance with the rules of the Michigan Board of Land Surveyors or by a Decree of a Court of Law; established, re-established, monumented, recovered, found as expressed below:

NOTE: Not more than 2 corners, all in the same town and range, may be recorded on this certificate.

A. Description of original monument and accessories and/or subsequent restoration:

1) **Corner not originally established during Joseph Wamplers Apr. 1826 Survey**

| 1 | A | B | C | D | E | F | G | H | I | J | K | L | M |
|----|---|----|---|----|---|----|---|----|---|----|---|----|---|
| 2 | | 6 | | 5 | | 4 | | 3 | | 2 | | 1 | |
| 3 | | | | | | | | | | | | | |
| 4 | | 7 | | 8 | | 9 | | 10 | | 11 | | 12 | |
| 5 | | | | | | | | | | | | | |
| 6 | | 18 | | 17 | | 16 | | 15 | | 14 | | 13 | |
| 7 | | | | | | | | | | | | | |
| 8 | | 19 | | 20 | | 21 | | 22 | | 23 | | 24 | |
| 9 | | | | | | | | | | | | | |
| 10 | | 30 | | 29 | | 28 | | 27 | | 26 | | 25 | |
| 11 | | | | | | | | | | | | | |
| 12 | | 31 | | 32 | | 33 | | 34 | | 35 | | 36 | |
| 13 | | | | | | | | | | | | | |

(Continued on Sheet 2)

B. Description of corner evidence found and/or method applied in restoring or reestablishing corner:

P.A. 345 INGHAM COUNTY
PEER APPROVED 8/19/2008 M

Computed the location of B-1 based on the survey in item 4 above. There was no surface evidence present. Excavated at the location to a depth of 24 inches and found a steel bar and cap #18998 nominally 0.31 feet south of the standard line. The location is 4.54 feet East of the prorated GLO observations. The found corner was set 99.00 feet East of the corner position at B-13 (T5N, R2E) per item 3 above which is the falling distance at the C-1 location.

We excavated a hole at the prorated location to a depth of 36 inches and found nothing. We also conducted an excavation based on the County surveyor location as identified in item 2 above. We excavated a hole 2 feet North and South by 2 feet East and West to a depth of 40 inches and found nothing. The area lies in a fill section between 25-50 inches deep.

There is no fence line occupation to the south or north. The area between B-1 and B-2 is a cultivated field.

Given the close proximity to the GLO proration, lack of historical evidence to support the corner as established by the County Surveyor in item 2 above or evidence to support a location at the prorated GLO location, I accepted the found 1/2" steel bar and cap #18998 as the best available evidence of the corner location. The location is supported by a subsequent survey by Larry Bryan in item 4 above which was used to create new parcels in the northwest 1/4 of section 6, T4N, R2E.

I projected the location North 0.31 feet and established the location on the standard township line. I set a 3/4" x 24" smooth steel bar and aluminum Ingham County remonumentation cap #47942 in a monument box nominally 7 feet north of the centerline of Milton Road.

Measurements based on GPS observations on 02 June, 2008:

(B-1 to A-1) - 1833.48' (B-1 to C-1) - 2611.01' (B-1 to B-2) - 3,691.97' (B-1 to B-13 T5N, R2E) - 81.90'

C. Description of monument for corner and accessories established to perpetuate locating the position of the corner:

Set a standard Ingham County 3/4" X 24" smooth steel bar and cap stamped "P.A. 345, PS 47942" in a monument box 7.3' North of the centerline of Milton Road (Asphalt).

Set nail & tag in the East face of a Utility pole

S18°W 203.22'

Set nail & tag in the East face of an 8" Ash

N07°W 28.35'

Set nail & tag in the Northwest face of a 12" Elm

N36°W 37.08'

B-13, South 1/4 Corner, Section 31, Perry Twp., T5N, R2E

N83°W 81.90'

Notes:

1) Witness bearings reference magnetic North. The magnetic declination at the time of observations is 6°20' West

2) Set nail and tag is a Magnetic nail and 1-1/2" aluminum tag stamped "INGHAM WITNESS PA 345"

Signed by Gilbert M. Barish

Date 29-Aug-2008

Surveyor's Michigan License No. 47942

FORM APPROVED BY MICHIGAN STATE BOARD OF PROFESSIONAL SURVEYORS, JAN. 28, 1971
REVISED MAY 14, 1975
REVISED JAN., 1983
REVISED OCT., 1995

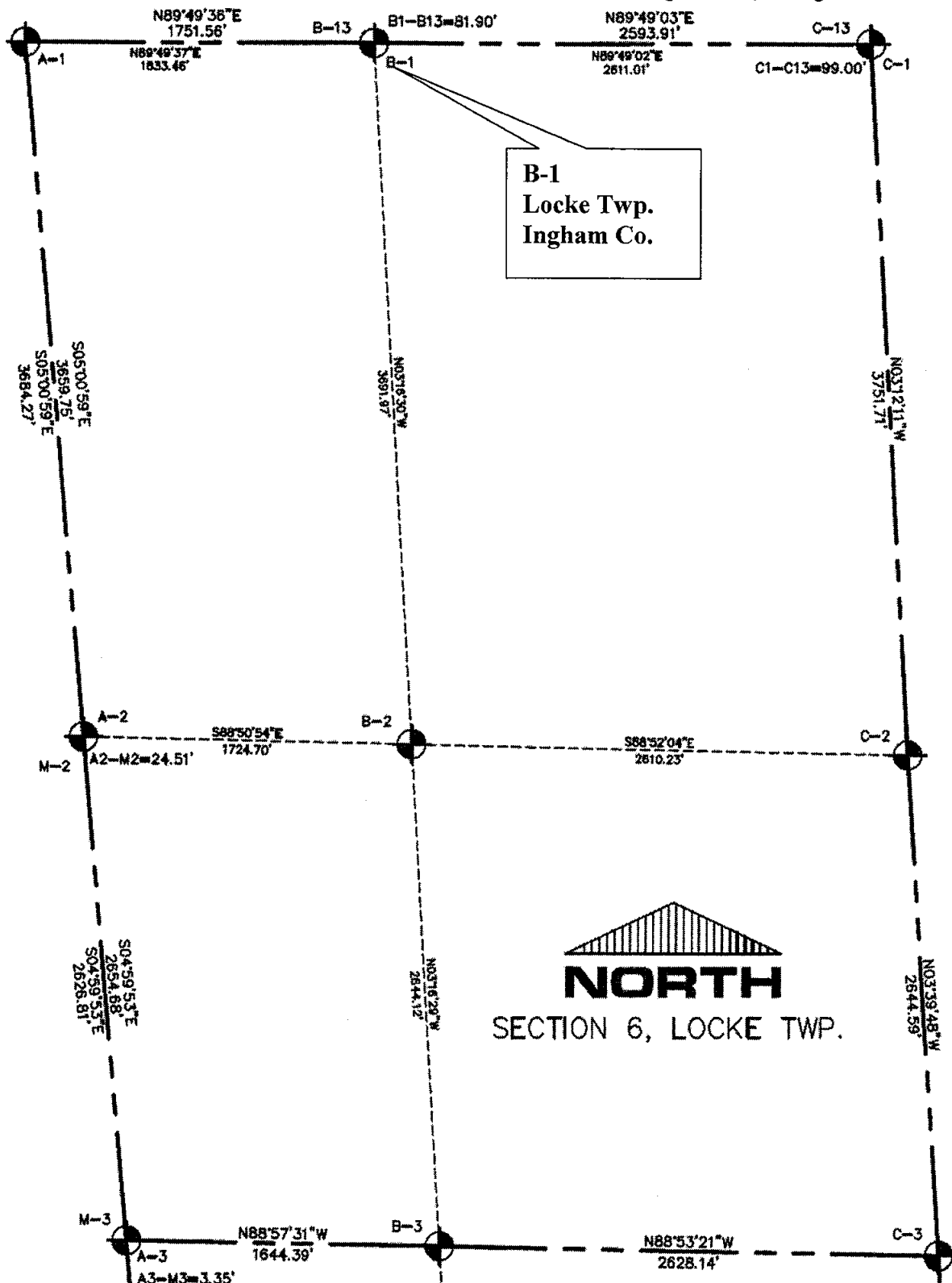


Part "A" continued – B-1, T4N, R2E, Ingham County, Michigan

- 2) **23-Feb-1956** – County Surveyor Records by A. Jackson states "In Marsh No Bearing Trees" with no witnesses given. Distance from B-1 to A-1, 108 rods 15 links (1,791.90')
- 3) **14-May-1981** Corner referenced in the CETA file by R. Lester, P.S. #18998. Indicates that physical evidence is inconclusive the corner at B-1 is lost (10/9/1978). Set a 1/2" bar and cap #18998 a distance of 98.99 feet east of the location at B-1 with the following witnesses:
 South side 10" ash, N40°W, 41.85'
 South side 10" twin ash, N20°W, 12.64'
 West side 6" ash, N15°E, 7.48'
 North side 10" ash, N35°E, 25.00'
- 4) **02-Nov-1984** Corner referenced in an unrecorded P.A. 132 survey by L. Bryan #25832. Survey calls for a found 1/2" bar and cap #18998, 8 feet North centerline Milton Road from Ingham County Remon Witness Sheet with the following witnesses:
 Found Nail and tag #18998 south side 10" ash, N40°W, 41.85'
 Found Nail and tag #18998 west side 6" ash, N15°E, 7.48'
 Found Nail and tag #18998 north side 10" ash, N35°E, 25.00'

Measurements: (B-1 to A-1) N85°19'57"W – 1,833.46 feet
 (B-1 to B-3) S01°34'29"W – 3,691.61 feet
 (B-1 to B-13 T5N,R2E) N85°19'57"W – 99.00 feet B-13 is different than current location

Locke Township Section Model, B-1, Section 6, T4N, R2E, Ingham Co., Michigan



LAND CORNER RECORDATION CERTIFICATE
Filing Requirement of Act 74, Mich. P.A. 1970

For corners in

Locke Township

Ingham
(County)

Located In:

Corner Code #

1. Public Land Survey

T 4N

R 2E

B-2

2. Property Controlling
in Section

S

T

R

3. Miscellaneous
Property in Sec.

S

T

R

S

T

R

B: 13 P: 264 10/21/2008 02:52 PM
2008-041040 LAND CORNERS Receipt #47587
Paula Johnson, Ingham County, Michigan

Pages: 2



Register of Deeds Stamp & File Number

4. Lot No. _____, Recorded Plat _____

5. Private Claims _____

I, Gilbert M. Barish, in a field survey on 19 June, 2008 do hereby state that under requirements of P.A. 74, Michigan P.A. of 1970, the corner points mentioned in lines 1 and 2 above were in conformance with regulations and rules therefore as required in the current manual of survey instructions of the United States Department of the Interior, Bureau of Land Management or by a decree of a Court of Law and /or that the corner points mentioned in lines 3, 4 and 5 above were in conformance with the rules of the Michigan Board of Land Surveyors or by a Decree of a Court of Law; established, re-established, monumented, recovered, found as expressed below:

NOTE: Not more than 2 corners, all in the same town and range, may be recorded on this certificate.

A. Description of original monument and accessories and/or subsequent restoration:

1) **Corner not originally established during Joseph Wamplers Apr. 1826 Survey**

| | A | B | C | D | E | F | G | H | I | J | K | L | M |
|----|---|----|---|----|---|----|---|----|---|----|---|----|---|
| 1 | | | | | | | | | | | | | |
| 2 | | 6 | | 5 | | 4 | | 3 | | 2 | | 1 | |
| 3 | | | | | | | | | | | | | |
| 4 | | 7 | | 8 | | 9 | | 10 | | 11 | | 12 | |
| 5 | | | | | | | | | | | | | |
| 6 | | 18 | | 17 | | 16 | | 15 | | 14 | | 13 | |
| 7 | | | | | | | | | | | | | |
| 8 | | 19 | | 20 | | 21 | | 22 | | 23 | | 24 | |
| 9 | | | | | | | | | | | | | |
| 10 | | 30 | | 29 | | 28 | | 27 | | 26 | | 25 | |
| 11 | | | | | | | | | | | | | |
| 12 | | 31 | | 32 | | 33 | | 34 | | 35 | | 36 | |
| 13 | | | | | | | | | | | | | |

(Continued on Sheet 2)

B. Description of corner evidence found and/or method applied in restoring or reestablishing corner:

Searched at the apparent location of the B-2 based on the intersection of lines from the opposing section corners and found a 1/2" steel bar and cap #18998. The location is on line between B-3 and B-1 and is 0.31 feet North of a line from A-2 to C-2.

CETA files are referenced in item 3 above indicate numerous excavations around the corner yielding no historical evidence. We conducted an excavation centered from the found location extending 4 feet to the west and 4 feet North and South centered on a line from B-2 to A-2 in order to examine a gap in the excavations conducted by the CETA program. No evidence was recovered.

Accepted the location based on the best available evidence for the position and replaced the found point with a standard 3/4" x 24" smooth steel bar and aluminum Ingham County remonumentation cap #47942 in the centerline of Wilgus Road.

Measurements based on GPS observations on 02 June, 2008:

(B-2 to A-2) - 1,724.70' (B-2 to B-1) - 3,691.97' (B-2 to C-2) - 2,610.23' (B-2 to B-3) - 2,644.12'

C. Description of monument for corner and accessories established to perpetuate locating the position of the corner:

Set standard Ingham County 3/4" X 24" smooth steel bar and cap stamped "P.A. 345, PS 47942" in the centerline of Wilgus Road 10 inches below the surface of the gravel.

Set nail & tag in the South face of a Utility pole
Northwest Corner of a metal barn
Southwest corner of a brick house
Set nail & tag in the South face of an 18" Pine
Set nail & tag in the South face of a 36" Oak

N52°W 117.23'
N72°E 291.91'
S50°E 156.28'
S69°E 128.54'
S89°E 197.75'

Notes:

- 1) Witness bearings reference magnetic North. The magnetic declination at the time of observations is 6°20' West
- 2) Set nail and tag is a Magnetic nail and 1-1/2" aluminum tag stamped "INGHAM WITNESS PA 345"

P.A. 345 INGHAM COUNTY

PEER APPROVED B/19/2008 M

Signed by

Gilbert M. Barish

Date

28-Aug-2008

Surveyor's Michigan License No. 47942

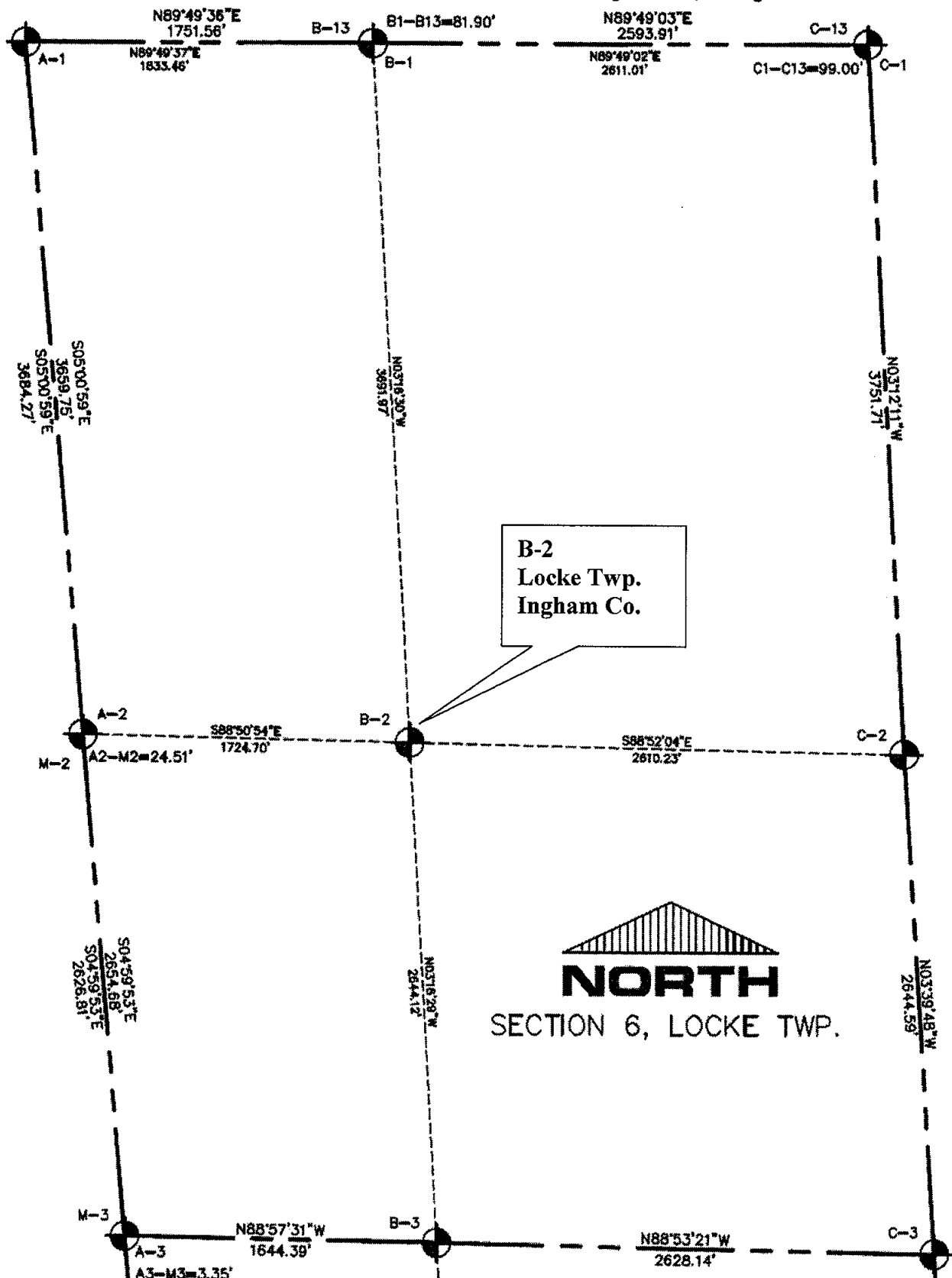


Part "A" continued – B-2, T4N, R2E, Ingham County, Michigan

- 2) **23-Feb-1956** – County Surveyor Records by A. Jackson "corner not identified".
Witnesses: Y Oak 24 S1E 21 lks.
D O 17 N22W 32 1/2 lks.
- 3) **09-November-1977** Corner referenced in the CETA file by L. Bryan. Numerous excavations conducted over a period of two years. No evidence recovered. A 1/2" steel bar and cap #18998 was set at the mathematical intersection of quarter lines.
- 4) **02-Nov-1984** Corner referenced in an unrecorded P.A. 132 survey by L. Bryan #25832. Survey calls for a reset 1/2" bar and cap #25832, from the Ingham County Remon Witness Sheet with the following witnesses:
Corner lands 3' East fence line North and 15' North centerline Wilgus Road
Found Nail and tag #18998 Northeast side 36" Oak, N30°W, 45.77'
Found Nail and tag west side 32" Maple, S35°E, 42.76'
Found Nail and tag west side 32" Maple, S20°E, 67.05'

Measurements: (B-2 to A-2) N84°00'14"W – 1,724.58 feet
(B-2 to B-1) N01°34'29"W – 3,691.61 feet
(B-2 to B-3) S01°34'29"W – 2,646.19 feet

Locke Township Section Model, B-2, Section 6, T4N, R2E, Ingham Co., Michigan



LAND CORNER RECORDATION CERTIFICATE
Filing Requirement of Act 74, Mich. P.A. 1970

For corners in

Locke Township

Ingham
(County)

Located In:

Corner Code #

1. Public Land Survey

T 4N

R 2E

B-3

2. Property Controlling
in Section

S

T

R

3. Miscellaneous
Property in Sec.

S

T

R

S

T

R

B: 13 P: 265 10/21/2008 02:52 PM
2008-041041 LAND CORNERS Receipt #47587
Paula Johnson, Ingham County, Michigan

Pages: 2



Register of Deeds Stamp & File Number

4. Lot No. _____, Recorded Plat _____

5. Private Claims _____

I, Gilbert M. Barish, in a field survey on 19 June, 2008 do hereby state that under requirements of P.A. 74, Michigan P.A. of 1970, the corner points mentioned in lines 1 and 2 above were in conformance with regulations and rules therefore as required in the current manual of survey instructions of the United States Department of the Interior, Bureau of Land Management or by a decree of a Court of Law and /or that the corner points mentioned in lines 3, 4 and 5 above were in conformance with the rules of the Michigan Board of Land Surveyors or by a Decree of a Court of Law; established, re-established, monumented, recovered, found as expressed below:

NOTE: Not more than 2 corners, all in the same town and range, may be recorded on this certificate.

A. Description of original monument and accessories and/or subsequent restoration:

- 1) **01-April-1826** – Corner set by Deputy Surveyor Joseph Wampler
Page 65 of the Ingham County GLO notes.
Set W P fw
At 40.00 ch. (2,640.00 feet)
Witnesses: WO 11 S14 1/2W, 12 lks.
WO 12 N33E, 6 1/2 lks.

(Continued on Sheet 2)

B. Description of corner evidence found and/or method applied in restoring or reestablishing corner:

Searched at the location identified in item 3 above. Found a 1/2" steel bar and cap# 25832 in a stone pile.

A measurement from A-3 to C-3 yielded a distance of 4,272.53 feet. The GLO distance between the same positions is 64.56 chains (4,260.96 feet). A prorated distance between A-3 and C-3 pointed to a search area that was 19 feet to the west of the recovered position. The terrain between A-3 and C-3 is very hilly. The location of the found 1/2" bar is near a high point in the surrounding terrain.

We excavated 10 feet (east and west) x 4 feet (north and south) X 2 feet deep hole centered at the prorated GLO distance. The excavation revealed no historical evidence of corner. We did recover remnants of an east and west fence line.

We excavated under the found 1/2" bar and cap and found 15 medium sized stones along with fence line remnants. The wood anchor post referenced in item 4 above no longer exists. There is a history of County Surveyor activity within this section by C.S. A. Jackson in item 2 above, however, there is no reference to this corner in his notes as he passed this location while observing the south line of section 6.

I held the position of the found 1/2" bar and cap in a stone pile as the best available evidence of corner based on the historical county surveyor activity in item 2 above and the evidence recovered by Surveyor Bryan in item 4 above. I replaced the 1/2" bar and cap with a 3/4" X 24" smooth steel bar and aluminum Ingham County remonumentation bar and cap stamped #47942. Set an orange carsonite marker 0.9' East.

Measurements based on GPS observations on 02 June, 2008:

(B-3 to B-2) – 2,644.62' (B-3 to C-3) – 2,628.14' (B-3 to B-4) – 2,639.95' (B-3 to A-3) – 1,644.39'

C. Description of monument for corner and accessories established to perpetuate locating the position of the corner:

Set standard Ingham County 3/4" X 24" smooth steel bar and cap stamped "P.A. 345, PS 47942" in a East-West fence line with an orange carsonite marker next to the location.

Set nail & tag in the West face of an 18" Silver Maple
Found nail & tag #25832 in East face of a 7" Maple
Set nail & tag in the South face of an 18" Cottonwood
Set nail & tag in the South face of an 18" Cherry
Found nail & tag #25832 in the North face of a 6" Oak

N38°E 48.24'
N04°E 17.43'
N49°W 20.71'
S33°E 5.08'
S72°E 16.43'

P.A. 345 INGHAM COUNTY
PEER APPROVED 0/19/2008 nl

Notes:

- 1) Witness bearings reference magnetic North. The magnetic declination at the time of observations is 6°20' West
2) Set nail and tag is a Magnetic nail and 1-1/2" aluminum tag stamped "INGHAM WITNESS PA 345"

Signed by Gilbert M. Barish

Date 28-Aug-2008

Surveyor's Michigan License No. 47942

Part "A" continued – B-3, T4N, R2E, Ingham County, Michigan

- 2) **23-February-1856** – Survey by County Survey A. Jackson references the corner at A-3 and runs the south line of Section 6 to a point 240 rods East of A-3 passing the corner at B-3 but making no reference by distance measure or witnesses to the location.
- 3) **19-July-1979** – Corner referenced in a recorded survey by Larry A. Bryan, P.S. #25832 as recorded in Liber 3 page 931 of Surveys, Ingham County Records.
 North 1/4 corner Section 7, T4N, R2E
 Set 1/2" bar & cap at anchor post.
 Set nail & tag South side 6" wild cherry, East, 5.00'
 Set nail & tag North side 5" thornapple, S70E, 18.04'
 Set nail & tag North side 8" elm, S75W, 18.87'

 Measurements: (B-3 to C-3) recorded S84°06'02"E – 2,624.22 feet
 (B- to A-3) recorded S84°01'35"E – 1,644.83 feet
- 4) **27-August-1979** - Land Corner Recordation Certificate by Larry A. Bryan, P.S. #25832 as recorded in Liber 5, page 284 of corners.

Part "A" states:

B-3 Post set in original Government Survey by Joseph Wampler, circa March-April, 1826.

Part "B" states:

B-3 Found large anchor post on East-West fence line. Measured East and West in close accord with G.L.O. distances.

Part "C" states:

B-3 North 1/4 corner of Section 7, T4N, R2E

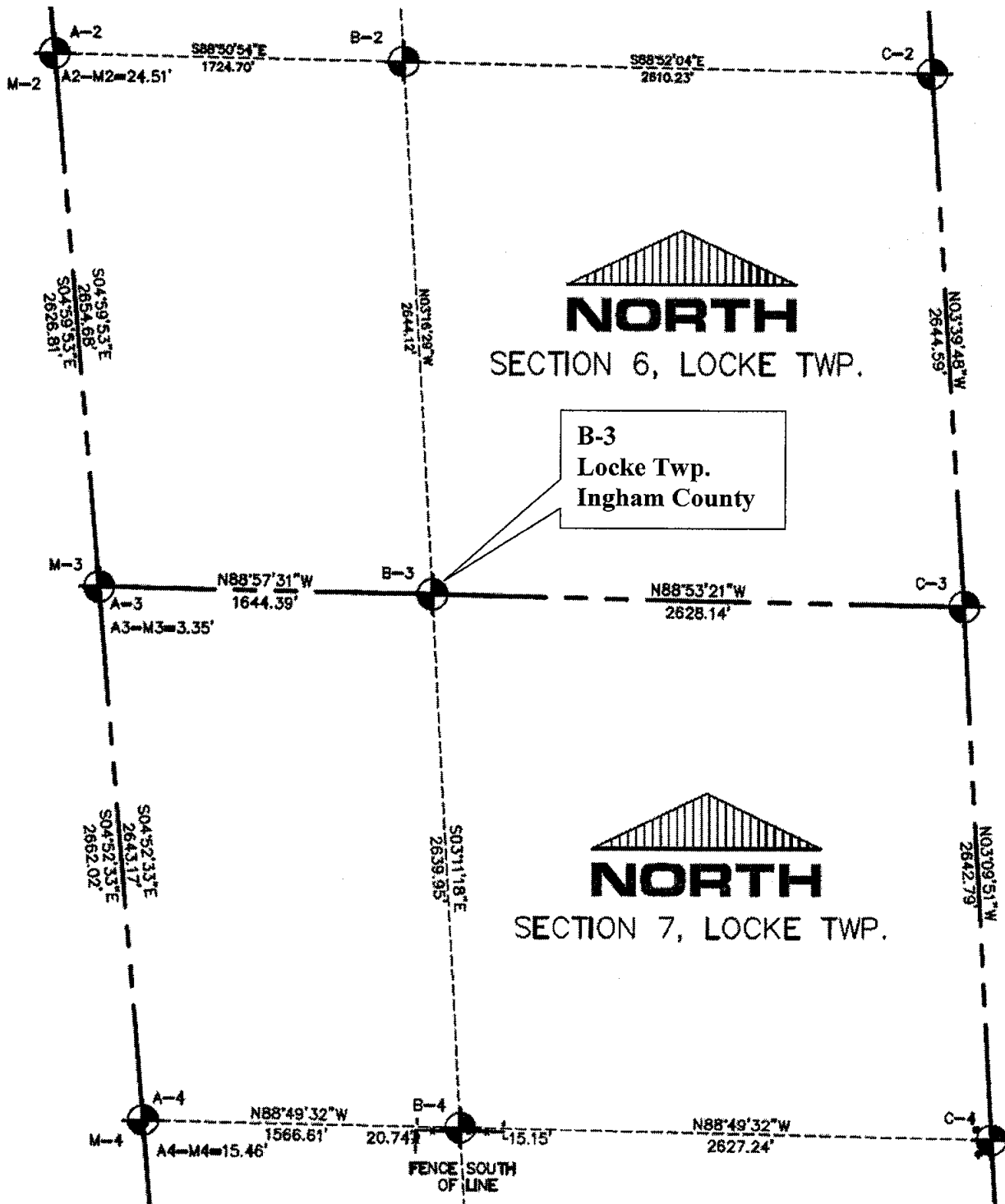
Set 1/2" iron bar with cap at base of anchor post.

Set nail and tag, R.L.S. #25832, South side of 6" Cherry, East, 5.00'

Set nail and tag, R.L.S. #25832, North side of 5" Thornapple, S70°E, 18.04'

Set nail and tag, R.L.S. #25832, North side of 8" Elm, S75°W, 18.87'

Locke Township Section Model, B-3, Section 6, T4N, R2E, Ingham Co., Michigan



DEC 04 2006

SECTION

LAND CORNER RECORDATION CERTIFICATE
Filing Requirement of Act 74, Mich. P.A. 1970

For corners in

Williamstown Township

INGHAM
(County)

Located In:

Corner Code #

1. Public Land Survey

T 4N R 1E
T 4N R 2E
T R
T R
S T R
S T R
S T R
S T R

M-1
A-1

B:13 P:35 11/30/06 1:35 PM Pages: 2
2006-060746 LAND CORNERS Receipt #20138
Paula Johnson, Ingham County, Michigan



2. Property Controlling
in Section
3. Miscellaneous
Property in Sec.

Register of Deeds Stamp & File Number

4. Lot No. _____, Recorded Plat _____

5. Private Claims _____

A-01, T4N, R1E

I, Gilbert M. Barish, in a field survey on 06 June/30 Oct., 2006 do hereby state that under requirements of P.A. 74, Michigan P.A. of 1970, the corner points mentioned in lines 1 and 2 above were in conformance with regulations and rules therefore as required in the current manual of survey instructions of the United States Department of the Interior, Bureau of Land Management or by a decree of a Court of Law and for that the corner points mentioned in lines 3, 4 and 5 above were in conformance with the rules of the Michigan Board of Land Surveyors or by a Decree of a Court of Law, established, re-established, monumented, recovered, found as expressed below:

NOTE: Not more than 2 corners, all in the same town and range, may be recorded on this certificate.

A. Description of original monument and accessories and/or subsequent restoration:

- 1) 1826 - Corner originally set by Joseph Wampler D.S. in a GLO survey.
Page 12 of the Ingham County GLO notes.
Set Wood Post
Witnesses: Tamarack 10 S15°E, 21 links (13.86')
Tamarack 12 N10°W, 27 links (17.82')
M-1 to M-2 (55.12 ch - 3637.92')
- 2) 24-February-1849 - Corner referenced by County Surveyor Louis D. Preston in Book 2, Page 62 (V. 2, page 82) of county surveyors notes.
references Original Section Corner.

Continued on Sheet 2

B. Description of corner evidence found and/or method applied in restoring or reestablishing corner:

Found 20" Harrison marker along north edge of Milton Road. Set by Norman C. Caldwell for Shiawassee Remonumentation program and recorded in Liber 8, Page 610, Ingham County Records.

Recovered various witnesses per existing records including a call on the Shiawassee County remonumentation certificate which calls for a found nail in the NE face of a 24" Maple. The tree is no longer standing, but the distance to the base of the tree stump checks very well.

Accepted the location of this corner as a faithful perpetuation of the original government corner per item 6 and 8 of Section A above. I did not replace the existing Harrison Marker for this corner with a Standard Ingham County Monument.

C. Description of monument for corner and accessories established to perpetuate locating the position of the corner:

Found 20" Harrison marker along north edge of Milton Road approximately 10 feet north of the centerline of Milton Road. Set by Norman C. Caldwell for Shiawassee Remonumentation program and recorded in Liber 8, Page 610, Ingham County Records and Liber 1, page 25 of Shiawassee County Records.

| | | |
|-------|--------|--|
| N10°E | 9.71' | Found Nail and tag #25832 (L. Bryan) in the east face of a 12" post |
| N53°E | 15.17' | Found Nail and tag #25832 (L. Bryan) in the northwest face of a 12" post |
| S49°E | 61.20' | Found Nail and tag #25832 (L. Bryan) in the northwest face of a 24" maple |
| S32°E | 62.00' | Found Nail and tag #25832 (L. Bryan) in the west face of a 24" maple |
| S45°E | 57.15' | Found 24" tree stump at record distance per witness in item 8 above "Fnd Nail NE face 24" Maple" |

P.A. 345 INGHAM COUNTY
PEER APPROVED 7/26/2006

PC-

Signed by

Gilbert M. Barish

Date 11-Nov-2006

Surveyor's Michigan License No. 47942

Part "A" continued - M-1, T4N, R1E, Ingham County, Michigan

- 3) 23-February-1856 - Corner referenced by County Surveyor A. Jackson in Book 3, Page 94 (V. 2, page 273) of county surveyors notes.

Witnesses:
Same as Item 1 above

- 4) 30-September-1975 Corner referenced in a recorded survey by Marvin F. Fouty, P.S. #18989 as recorded in Liber 2 page 525 of Surveys.

| | | |
|--|-------|--------|
| Set 1/2" bar and cap | | |
| Tag and Nail east side 8" anchor post | North | 10.15' |
| Tag and Nail south side 16" twin Maple | East | 86.00' |
| Tag and Nail east side 4" elm | South | 33.30' |

- 5) 26-January-1976 Land Corner Recordation Certificate by Marvin F. Fouty, P.S. #18989 as recorded in Liber 3 page 537 of corners.

Part "A" states: M-1 - Original monument and accessories obliterated. In a survey dated Feb. 24, 1849 County Surveyor Louis D. Preston called for the original corner of his survey of the Section. No subsequent call or description of the corner could be found in Ingham or Shiawassee County Records.

Part "B" states: M-1 - Found old 1" pipe buried 1 foot at north edge of gravel road on old fence line south. Records of eight area Registered Land Surveyors disclosed no conflicting evidence of the corner location. Replaced 1" pipe with 1/2" bar & cap.

Part "C" states: M-1 - NE corner Section 1, T4N, R1E

| | | |
|--|-------|--------|
| 1/2" bar and cap | | |
| Tag and Nail east side 8" anchor post | North | 10.15' |
| Tag and Nail south side 16" twin Maple | East | 86.00' |
| Tag and Nail east side 4" elm | South | 33.30' |

- 6) 19-February-1979 Land Corner Recordation Certificate by Ronnie M. Lester, P.S. #18998 as recorded in Liber 5 page 187 of corners. (Certificate Calls for A-1 as a Common Corner with M-1 in T4N, R1E Per Part "C" below)

Part "A" states: A-1 - Post set in original government survey by J. Wampler dated between March - April, 1826. Original corner found in a survey by Louis D. Preston, County Surveyor, dated Feb. 24, 1849 (V. 2, P. 82) Corner referred to in a survey by A. Jackson, County Surveyor, dated Feb. 23, 1856 (V. 2, P. 273) Corner remonumented as 1/2" bar with cap set by Marvin F. Fouty, R.L.S. #18989 and recorded as M-1, Williamston Twp., T4N-R1E in L.3, P.537 (PA 74) dated Feb. 4, 1978.

Part "B" states: A-1 - Excavated a hole 3' x 3' to an average depth of 3' on the north edge of Milton Road. Found 1/2" bar and cap #18989, +/- 10.0' north of the centerline of Milton Road, and on the north edge of road. Accepted 1/2" bar with cap as corner recorded in L.3, P.537 noted above.

Excavation conducted by Ingham County Survey and Remonumentation Project Crew.

Part "C" states: A-1 - NW Corner, Section 6, T4N-R2E

Common Corner to T4N-R1E

Set 4"x 36" concrete monument with 1/2" x 38" rerod and cap #18998 at location of 1/2" bar described above:

Found nail & flagging, west side 8" Wood post, North, 10.08'

Found nail & flagging, south side Twin Maple, East, 86.04'

Found nail & flagging, west side 6" Elm, SSW, 33.28'

Found nail & flagging, north side 10" Elm, ESE, 56.92'

- 7) 1984 & 1992 Surveys by M.L. Vanraemdonck as recorded in L. 2, page 380 corners and L. 4, page 119, and L. 6, page 178 of surveys, Shiawassee County Records

| | | |
|-------------------------------|-------|--------|
| Found 1/2" bar and cap #18989 | | |
| Nail in 12" wood post | North | 10.00' |
| Nail & washer in 10" elm | S05°W | 32.90' |
| Nail in 10" ash | S45°E | 57.00' |
| Nail & washer in 24" Maple | N85°E | 86.24' |

- 8) 15-December-1995 Land Corner Recordation Certificate by Norman C. Caldwell, P.S. #12018 as recorded in Liber 8 page 610 of corners. (This corner was remonumented as part of the Shiawassee County Remonumentation Program)

Part "A" states: A-1, M-1, M-13, A-13 - (Items in this section are already referenced above)

Part "B" states: A-1, M-1, M-13, A-13 - Found 1/2" rerod w/cap #25832 per L. 2, P. 380 of Corners and L. 4, P. 119 and L. 6, P. 178 of surveys. (Shiawassee County Records), over 4" concrete monument per Ingham County L. 5, P. 187, which fits reasonably well with GLO swamp calls.

Replaced with a standard 20" Harrison marker as approved by Shiawassee County Peer Review Group and is accepted as the best available evidence of the position of the original corner.

Part "C" states: A-1, M-1, M-13, A-13 - Found 1/2" rerod w/cap #25832 per L. 2, P. 380 of Corners and L. 4, P. 119 and L. 6, P. 178 of surveys. (Shiawassee County Records), over 4" concrete monument per Ingham County L. 5, P. 187, which fits reasonably well with GLO swamp calls.

Replaced with a standard 20" Harrison marker as approved by Shiawassee County Peer Review Group and is accepted as the best available evidence of the position of the original corner.

| | | |
|-------|--------|--|
| North | 9.79' | Fnd Nail E. face 12" wood post (R) |
| S05°W | 32.98' | Fnd N&W NE face dead 10" Elm (R) |
| S45°E | 57.15' | Fnd Nail NE face 24" Maple (R) |
| South | 33.30' | Fnd 1/2" iron w/cap #25832 (Larry Bryan) |

- 9) No Recorded subdivisions or Condominium documents found relating to this corner

REMONUMENTATION

DEC 1 6 1996

COMMISSION

LAND CORNER RECORDATION CERTIFICATE

Liber

9 Page 135

Filing Requirement of Act 74, Mich. P.A. 1970

For corners in
INGHAM

LOCKE TOWNSHIP

Located in:

Corner Code ##

1. Public Land Survey

T 4N R 2E

C-1

2. Property Controlling
in Section

S T R

3. Miscellaneous
Property in Sec.

S T R

FILED

960046041
12/03/1996 13:23:03
REGISTER OF DEEDS
Paula Johnson
INGHAM COUNTY, MI

Register of Deeds Stamp & File Number

4. Lot No. _____, Recorded Plat _____

5. Private Claims _____

RONALD L. ENGER

SEPTEMBER 27

95

I, _____, in a field survey on _____, 19____, do hereby certify that under requirements of P.A. 74, Michigan P.A. of 1970, the corner points mentioned in lines 1 and 2 above were in conformance with regulations and rules therefore as required in the current manual of survey instructions of the United States Department of the Interior, Bureau of Land Management or by a decree of a Court of Law and/or that the corner points mentioned in lines 3, 4 and 5 above were in conformance with the rules of the Michigan Board of Land Surveyors or by a Decree of a Court of Law; established, re-established, monumented, re-monumented, recovered, found as expressed below:

NOTE: Not more than 4 corners, all in the same town and range, may be recorded on this certificate.

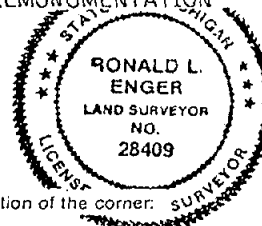
A. Description of original monument and accessories and/or subsequent restoration:

1. POST SET IN ORIGINAL GOVERNMENT SURVEY BY J. WAMPLER, DEPUTY SURVEYOR IN MARCH 1826 WITH THE FOLLOWING NOTATION:
AT 96.46 CHAINS (3726.36') INTERSECTED NORTH BOUNDARY 150 LKS (99.0') EAST OF POST
ELM 11" N66W 37
ELM 4" S52E 25

CONTINUED ON BACK.

B. Description of corner evidence found and/or method applied in restoring or reestablishing corner:

SEARCHED AT APPARENT LOCATION OF CORNER AND FOUND 3/4" BAR & CAP LS 28409 IN EAST-WEST FENCE LINE. ACCEPTED 3/4" BAR AS POSITION OF CORNER BECAUSE OF AGREEMENT WITH HISTORICAL OCCUPATION AND EXCELLENT PROPORTIONAL MEASUREMENT TO TJ BROWNS SURVEY OF SEPTEMBER 1864. BROWNS MEASUREMENT WAS 2584.46' TO D-1. CHANGED CAP TO PA345 PS 28409. MEASURED EAST 2595.39' TO D-1. MEASURED SOUTH 3753.02' TO C-2. MEASUREMENTS BASED ON M. FOUTY'S TRAVERSE IN REMONUMENTATION FIELD BOOK L0-1 AND ENGER SURVEYING TRAVERSE FOR JOB #33-282.



C. Description of monument for corner and accessories established to perpetuate locating the position of the corner:

C-1 T4N R2E
3/4" DIAMETER X 24" LONG SMOOTH STEEL BAR AND CAP IMPRINTED "PA 345 PS 28409"
5/8" REBAR AND CAP #28409 (C-13 PERRY TOWNSHIP), WEST, 99.00'
NAIL & TAG 18998 IN NORTH SIDE OF GATE POST, 268° NAZ., 74.55'
NAIL & TAG 18998 IN EAST SIDE OF 24" HICKORY, 41° NAZ., 190.63'
NAIL & TAG 18989 IN EAST SIDE OF 20" HICKORY, 171° NAZ., 125.53'
NAIL & TAG 18989 IN WEST ROOT OF 29" HICKORY, 173° NAZ., 270.71'

Signed by

R. L. Enger

Date

OCTOBER 28, 1996

Surveyor's Michigan License No.

28409

P.A. 345 INGHAM COUNTY

PEER APPROVED 11/14/96 M

FORM APPROVED BY MICHIGAN STATE BOARD OF LAND SURVEYORS, JAN. 28, 1971
REVISED MAY 14, 1979
REVISED JAN., 1983

C-1 T4N R2E
PART A CONTINUED:

2. T. J. BROWN, DEPUTY COUNTY SURVEYOR, USED CORNER IN A SURVEY RECORDED IN VOLUME 3, PAGE 15, COUNTY SURVEYOR'S RECORD ON SEPTEMBER 2, 1864 WITH NO MENTION OF MONUMENT OR WITNESSES.

3. MARK VAN RAEMDONCK, PS #24622, CALLS FOR C-13 PERRY TOWNSHIP IN AN UNRECORDED SURVEY DATED FEBRUARY 1994:

REROD

EAST 33.00 REROD

S50°E 24.32' 4" STEEL FENCE POST

WEST 2593.54 R & C #24622 AT SOUTH 1/4 CORNER SECTION 31

N01° 23' 24"E 2644.85' 1" PIN AT EAST 1/4 CORNER SECTION 31

4. MARV FOUTY, PS #18989, TRAVERSED SECTION DURING THE 1994 REMONUMENTATION PROGRAM.

7. DURING AN ENGER SURVEYING PROJECT IN APRIL 1995, DAVID CLIFFORD, PS #25837, FOUND VAN RAEMDONCK'S BAR AT C-13 PERRY TOWNSHIP. AT THIS TIME ENGER SURVEYING, USING M. FOUTY'S 1994 TRAVERSE TIED INTO ALL OCCUPATION LINES THAT MIGHT AFFECT THE LOCATION OF THE CORNER.

8. AT THE SAME TIME D. CLIFFORD WAS WORKING IN SECTION 5 OF LOCKE TOWNSHIP, JEFF AUTENRIETH, PS #31588 OF BRYAN LAND SURVEYS, WAS WORKING IN SECTION 32 OF PERRY TOWNSHIP. D. CLIFFORD EXCAVATED A VERY LARGE AREA IN SEARCH OF EVIDENCE C-1 PERRY AND J. AUTENRIETH TIED OCCUPATION TO EAST AT SAME TIME. OCCUPATION TIES LED BOTH CLIFFORD AND AUTENRIETH TO BELIEVE THAT VAN RAEMDONCK'S BAR MARKS THE BEST POSSIBLE LOCATION FOR C-13 PERRY TOWNSHIP. OCCUPATIONAL EVIDENCE OF THE POSITION A-1 LOCKE TOWNSHIP AND G-13 PERRY TOWNSHIP THAT WAS IN GOOD PRORATIONAL MEASUREMENT TO VAN RAEMDONCK'S BAR SUPPORTED THIS ASSUMPTION. D. CLIFFORD ACCEPTED THE GLO FALLING DISTANCE AND VAN RAEMDONCK'S POSITION OF C-13 PERRY AS THE BEST EVIDENCE OF THE ORIGINAL POSITION OF THIS CORNER AND ACCORDINGLY RE-ESTABLISHED C-1 AT 99.00' EAST OF C-13 PERRY AND MONUMENTED THE AMENDED CORNER POSITION (USING VAN RAEMDONCK'S BAR AT C-13, T5N, R2E AND 1/2" BAR AND CAP PS #25832 AT D-13, T5N, R2E) WITH A 3/4" DIAMETER X 24" LONG SMOOTH STEEL BAR AND CAP LS 28409. HE REPLACED VAN RAEMDONCK'S 1/2" REBAR WITH A 5/8" REBAR AND CAP LS #28409.

5/8" REBAR & CAP #28409 (C-13 PERRY TOWNSHIP), WEST, 99.00'
NAIL & TAG 18998 IN NORTH SIDE OF GATE POST, 268° NAZ., 74.55'
NAIL & TAG 18998 IN EAST SIDE OF 24" HICKORY, 41° NAZ., 190.63'
NAIL & TAG 18989 IN EAST SIDE OF 20" HICKORY, 171° NAZ., 125.53'
NAIL & TAG 18989 IN WEST ROOT OF 29" HICKORY, 173° NAZ., 270.71'

FILED

Nov 30 8 11 AM '84

SURVEY &
REMONUMENTATIONLAND CORNER RECORDATION CERTIFICATE
Filing Requirement of Act 74, Mich. P.A. 1970

For corner

Ingham
(County)
Loc. 12

Located In:

Corner Code #:

1. Public Land Survey

T 4N R 2E

C-2

2. Property Controlling
in Section

S T R

3. Miscellaneous
Property in Sec.

S T R

Register of Deeds Stamp & File Number

4. Lot No. , Recorded Plat

5. Private Claims

I, Marvin Fouty, in a field survey on Aug. 23, 1984, do hereby certify that under requirements of P.A. 74, Michigan P.A. of 1970, the corner points mentioned in lines 1 and 2 above were in conformance with regulations and rules therefore as required in the current manual of survey instructions of the United States Department of the Interior, Bureau of Land Management or by a decree of a Court of Law and/or that the corner points mentioned in lines 3, 4 and 5 above were in conformance with the rules of the Michigan Board of Land Surveyors or by a Decree of a Court of Law; established, re-established, monumented, re-monumented, recovered, found as expressed below:

NOTE: Not more than 4 corners, all in the same town and range, may be recorded on this certificate.

A. Description of original monument and accessories and/or subsequent restoration:

1. Post set in original Government Survey by Joseph Wampler in April 1826 with the following witnesses:

Iron^d 9 N43E 31, B.O. 8 N37W 24

2. T.J. Brown, County surveyor, reported using corner in survey dated Sept. 2, 1864 and recorded in Vol. 3, Page 15 of County Surveyors Records with no mention of monument and the following witnesses:

Swamp White Oak (double) 24" (no distance noted) S5-1/2°E and Ironwood 10" N54°E 31 links.

3. The corner monument, a 1/2" bar & cap No. 18998 was set with no witnesses at the intersection of fence lines by Surveyor Ron Lester LS# 18998 in May of 1981. The unrecorded records of the results of the survey were supplied me by Surveyor Lester. The work was done for the Ingham County Remonumentation program.

B. Description of corner evidence found and/or method applied in restoring or reestablishing corner:

Traversed Section and Found 1/2" bar & cap No. 18998 at the extension of old fence lines S, E, and W. The iron was in the middle of a farmer's lane in a water ponded area. Excavated a 4' dia hole 2 feet deep and probed but found nothing. Measurements from the corner iron are: Lester W2610.74'; Fouty W2610.43'; Lester N3750.44'; Fouty N3751.34'; GLO records (3726.36'); County Surveyor Brown's notes E39.36 ch (2597.76'); Fouty E2617.43'; Lester S2643.56'; Fouty S2643.94'; County Surveyor Brown no dimension. Accepted the Lester iron as the best evidence of the perpetuated location of the corner and replaced found bar and cap with Standard 3/4" x 24" Ingham County Remonumentation Bar and PA345 Cap #18989.

C. Description of monument for corner and accessories established to perpetuate locating the position of the corner:

Standard 3/4" x 24" Ingham County Remonumentation Bar and PA345 Cap #18989.

Nail & Tag West side 30" Oak S05°W 21.70'

Nail & Tag South side 10" Oak East 23.28'

Nail & Tag West side 10" Ash N10°E 48.27'

Nail & Tag West side 10" Ash N10°W 31.63'

Nail & Tag North side 12" Ash N80°W 57.07'



Signed by

Marvin Fouty

Date

Aug. 30, 1994

Surveyor's Michigan License No.

18989

FORM APPROVED BY MICHIGAN STATE BOARD OF LAND SURVEYORS, JAN. 28, 1971
REVISED MAY 14, 1975
REVISED JAN., 1983

P.A. 345 INGHAM COUNTY

APR 10 1995
COMMISSION

LIBER 8 PAGE 364

FILED

Nov 30 8 13 AM '94

LAND CORNER RECORDATION CERTIFICATE
Filing Requirement of Act 74, Mich. P.A. 1970

For corners in

Ingham
(County)
Locke

Located in:

Corner Code ##

1. Public Land Survey

T 4N R 2E

C-3

T R

T R

T R

2. Property Controlling
In Section

S T R

S T R

3. Miscellaneous
Property in Sec.

S T R

S T R

Register of Deeds Stamp & File Number

4. Lot No. , Recorded Plat

5. Private Claims

I, Marvin Fouty, in a field survey on Aug. 27, 19 94, do hereby certify that under requirements of P.A. 74, Michigan P.A. of 1970, the corner points mentioned in lines 1 and 2 above were in conformance with regulations and rules theretofore as required in the current manual of survey instructions of the United States Department of the Interior, Bureau of Land Management or by a decree of a Court of Law and/or that the corner points mentioned in lines 3, 4 and 5 above were in conformance with the rules of the Michigan Board of Land Surveyors or by a Decree of a Court of Law; established, re-established, monumented, re-monumented, recovered, found as expressed below:

NOTE: Not more than 4 corners, all in the same town and range, may be recorded on this certificate.

| | A | B | C | D | E | F | G | H | I | J | K | L | M |
|----|----|----|----|----|----|----|----|----|----|---|---|---|---|
| 2 | 6 | 5 | 4 | 3 | 2 | 1 | | | | | | | |
| 3 | | | | | | | | | | | | | |
| 4 | 7 | 8 | 9 | 10 | 11 | 12 | | | | | | | |
| 5 | | | | | | | | | | | | | |
| 6 | 16 | 17 | 18 | 19 | 20 | 21 | 22 | 23 | 24 | | | | |
| 7 | | | | | | | | | | | | | |
| 8 | 19 | 20 | 21 | 22 | 23 | 24 | | | | | | | |
| 9 | | | | | | | | | | | | | |
| 10 | 30 | 29 | 28 | 27 | 26 | 25 | | | | | | | |
| 11 | | | | | | | | | | | | | |
| 12 | 31 | 32 | 33 | 34 | 35 | 36 | | | | | | | |
| 13 | | | | | | | | | | | | | |

A. Description of original monument and accessories and/or subsequent restoration:

1. Post set in original Government Survey by Joseph Wampler in April 1826, witnessed by:
Tam 9 S 51/2E 84-1/2 W.O. 9 S62E 200

2. Larry A. Bryan LS# 25832 recorded corner on August 27, 1979 in Liber 5 of Corners, Page 283 Ingham Co. Records as a Found decayed anchor post surrounded by numerous 4"-8" diameter stones at the intersection of fence lines E, W, & S. The corner was replaced by 1/2" iron bar with cap in center of decayed anchor post with the following witnesses: Nail and tag in West side of 8" Ash, S30°E, 3.48' Nail and tag in West side of 22" Maple, N30°E, 30.54'; Nail and tag in West side of 20" Maple, N50°E 32.69' (Continued on back)

B. Description of corner evidence found and/or method applied in restoring or reestablishing corner:

Traversed Section and Found 1/2" bar & cap No. 25832 in decayed anchor post and fence lines E, W & S, with one of the Bryan witnesses remaining, the 8" Ash which has been cut off at the top; Excavated around post and found traces of stones. Measurements from the corner are: Bryan W2624.22'; Lester W2625.61'; Fouty W2624.89'; Lester N2643.56'; Fouty N2643.94'; Bryan E 2612.32'; Fouty E2611.64'; Bryan S2643.95'; Fouty S2643.27'. Accepted the Bryan iron as the best evidence of the perpetuation of the corner and replaced found bar and cap with Standard 3/4" x 24" Ingham County Remonumentation Bar and PA345 Cap #18989.

C. Description of monument for corner and accessories established to perpetuate locating the position of the corner:

Standard 3/4" x 24" Ingham County Remonumentation Bar and PA345 Cap #18989.
Set Nail & Tag SW Side 18" Maple S 40°W 17.08'
Set Nail & Tag S Side 10" Maple West 50.88'
Set Nail & Tag E Side 24" Maple N15°W 72.08'
Set Nail & Tag NE Side 18" Ash S70°E 47.58'
Set Nail & Tag E Side twin 18" Maple S05°E 43.95'
Found Nail & Tag #25832 in 8" Ash stump S30°E, 3.3'.



Signed by

Marvin Fouty

Date

Aug. 30, 1994

Surveyor's Michigan License No.

18989

P.A. 343 INGHAM COUNTY

FORM APPROVED BY MICHIGAN STATE BOARD OF LAND SURVEYORS, JAN. 26, 1971
REVISED MAY 14, 1975
REVISED JAN., 1993

Harry A. Bryan LS# 25832 used corner in a survey on June 20, 1979 recorded in Liber 3 of Surveys, Page 931 at 1/2" bar and cap at fence intersection with same witnesses as in item # 2.

Surveyor Bryan's corner was tied into the survey of the Section as a 1/2" b & c, Bryan with no witness reference by Surveyor Ron Lester LS# 18998 in May of 1981. The unrecorded records of the results of the survey were supplied me by Surveyor Lester. The work was done for the Ingham County Remonumentation program.