

LAND CORNER RECORDATION CERTIFICATE  
Filing Requirement of Act 74, Mich. P.A. 1970

For corners in

Locke Township

Ingham  
(County)

Located In:

Corner Code #

1. Public Land Survey

T 4N R 2E

A-3

2. Property Controlling  
in Section

S T R

3. Miscellaneous  
Property in Sec.

S T R

S T R

4. Lot No. \_\_\_\_\_, Recorded Plat \_\_\_\_\_

5. Private Claims \_\_\_\_\_

I, Gilbert M. Barish, in a field survey on 11 June, 2008 do hereby state that under requirements of P.A. 74, Michigan P.A. of 1970, the corner points mentioned in lines 1 and 2 above were in conformance with regulations and rules therefore as required in the current manual of survey instructions of the United States Department of the Interior, Bureau of Land Management or by a decree of a Court of Law and /or that the corner points mentioned in lines 3, 4 and 5 above were in conformance with the rules of the Michigan Board of Land Surveyors or by a Decree of a Court of Law; established, re-established, monumented, recovered, found as expressed below:

**NOTE: Not more than 2 corners, all in the same town and range, may be recorded on this certificate.**

A. Description of original monument and accessories and/or subsequent restoration:

- 1) **01-April-1826** – Corner set by Deputy Surveyor Joseph Wampler  
Page 65 of the Ingham County GLO notes.  
Set post at 64.56 (4,260.96)  
Int W In 5 lks S of P  
Set post int Cor of 6 and 7 fw  
NO 12 N38E, 53 lks.  
NO 16 N89E, 63 lks.

(Continued on Sheet 2)

B. Description of corner evidence found and/or method applied in restoring or reestablishing corner:

Found a 1/2" steel bar in concrete in a monument box at the centerline of Shaftsbury Road per item 6 above nominally 0.5' below the surface of the asphalt. Accepted the location of the corner based on the recovery of stones discovered during an excavation as described in Item 5 above by R. Lester, P.S..

Accepted the location of the found concrete monument and set an aluminum Ingham County remonumentation cap stamped #47942 on top of the 1/2" bar in concrete in the monument box. The point is on the standard township line.

Measurements based on GPS observations on 02 June, 2008:

(A-3 to A-2) – 2,654.68' (A-3 to B-3) – 1,644.39' (A-3 to A-4) – 2,643.17'

C. Description of monument for corner and accessories established to perpetuate locating the position of the corner:

Set standard Ingham County cap stamped "P.A. 345, PS 47942" on an existing 1/2" steel bar in concrete in a monument box in the centerline of Shaftsbury Road (Asphalt).

Found nail & tag #18998 in the Southwest cor. of a fence post	S38°E	41.15'
Found nail & tag #18998 in the North face of a 24" Red Maple	S74°E	29.73'
Found remon nail & tag in the North face of a Util. pole	S65°W	30.10'
Found nail & tag #25832 in the Northwest face of a 30" Oak	N40°E	44.21'
M-3, Southeast Corner, Section 1, Williamstown Twp.	North	3.35'

Notes:

- 1) Witness bearings reference magnetic North. The magnetic declination at the time of observations is 6°20' West  
2) Set nail and tag is a Magnetic nail and 1-1/2" aluminum tag stamped "INGHAM WITNESS PA 345"

Signed by Gilbert M. Barish

Date 28-Aug-2008

Surveyor's Michigan License No. 47942

B: 13 P: 261 10/21/2008 02:52 PM  
2008-041037 LAND CORNERS Receipt #47587  
Paula Johnson, Ingham County, Michigan

Pages: 2



Register of Deeds Stamp & File Number

	A	B	C	D	E	F	G	H	I	J	K	L	M
1													
2	6			5		4		3		2		1	
3													
4	7		8		9		10		11		12		
5													
6	18		17		16		15		14		13		
7													
8	19		20		21		22		23		24		
9													
10	30		29		28		27		26		25		
11													
12	31		32		33		34		35		36		
13													

P.A. 345 INGHAM COUNTY

PEER APPROVED 8/19/2008 KL



Part "A" continued - A-3, T4N, R2E, Ingham County, Michigan

- 2) **23-Feb-1956** - County Surveyor Records by A. Jackson "corner not identified".  
Witnesses: W Oak 16 N89E 65 lks.  
D O 12 N38E 53 lks.
- 3) **10-August-1972** - Corner referenced in a recorded survey by W. Lee Paddison, P.S. #7256 as recorded in Liber 1 page 397 of Surveys, Ingham County Records.  
N.W. Corner Sec. 7, T.4 N., R.2 E.  
Locke Twp., Ingham Co., Michigan  
Existing 1 in. iron pipe  
C/L Shaftsbury Road  
Fence East  
S. 54 W. 31.82 ft. nail N. base P. pole  
N. 43 E. 41.10 ft. nail N. base 30 in. W. oak  
S. 79 30 E. 29.97 ft. nail N. base 24 in S. maple
- 4) **25-May-1978** - Land Corner Recordation Certificate by W. Lee Paddison, P.S. #7256 as recorded in Liber 4, page 204 of corners.

**Part "A" states:** Surveyed in April 1826 by Joseph Wampler

**Part "B" states:** A-3 NW. Corner Frl. Sec. 7, T.4N., R.1E.

Found in place 1 inch iron pipe located in the center of Shaftsbury Road about 4 inches below the road surface. In line with the property line fence east.

**Part "C" states:** Witnesses established for the monument found at A-3

East 33.0 ft. 1 inch iron pipe set in the fence line east  
N. 43 E. 41.10 ft. to a 10d nail in the N. base 30 inch white oak.  
S. 72 30 E. 29.97 ft. to a 10d nail in N. base 24 inch maple  
S. 54 W. 31.82 ft. to a 10d nail in N. base power pole.

- 5) **12-June-1979** - Land Corner Recordation Certificate by Ronnie M. Lester, P.S. #18998 as recorded in Liber 5, page 243 of corners.

**Part "A" states:**

A-3

Post set in original government survey by J. Wampler dated between March 29 and April 6, 1826.  
Corner referred to in a survey by A. Jackson, County Surveyor, February 23, 1856 (v.2, p. 273).

**Part "B" states:** A-3

Excavated a hole 3' x 4' to an average depth of 2.0' on the centerline of Shaftsbury Road and  $\pm 3.5'$  north of fence line to the east. No physical evidence of corner was found. Excavated a second hole 5' x 5' to an average depth of 2.0' on the centerline of Shaftsbury Road and  $\pm 3.5'$  south of fence line to the east. Found two large pointed rocks, one directly below the other at a depth of 2.0' below road surface on the centerline of Shaftsbury Road and  $\pm 1.0'$  south of fence line to the east. Set  $\frac{1}{2}$ " iron bar in place of top pointed rock on Nov. 15, 1977 until further measurements could be made. Measured south  $\pm 5290'$  to A-5 Locke and north 3.3' to M-3 Williamston, T4N-R1E, both in close accord with G.L.O. distances. Accepted top pointed rock for corner. Excavation conducted by Ingham County Survey and Remonumentation Project crew.

**Part "C" states:** A-3

NW Corner, Section 7, T4N-R2E

Set 4" x 36" concrete monument with  $\frac{1}{2}$ " x 38" rod with cap #18998 in location of  $\frac{1}{2}$ " iron bar and pointed rock described above:

Nail & tag, #18998, southwest corner of fence post, SE, 41.07'

Nail & tag, #18998, north side telephone pole, WSW, 30.17'

Nail & tag, #18998, northwest side 30" Oak, NE, 43.65'

Nail & tag, #18998, north side 24" Maple, ESE, 29.76'

Concrete monument, M-3 Williamston T4N-R1E, R.L.S. #18998, North, 3.3'

- 6) **19-July-1979** - Corner referenced in a recorded survey by Larry A. Bryan, P.S. #25832 as recorded in Liber 3 page 931 of Surveys, Ingham County Records.

Northwest corner Section 7, T4N, R2E

Fd.  $\frac{1}{2}$ " bar & cap #18998 in concrete

Fd. nail & tag #18998 North side 30" oak, S80E, 29.74'

Fd. nail & tag #18998 North side power pole, S70W, 30.12'

Fd. nail & tag #18998 West side 32" oak, N40E, 43.66'

Measurements: (A3 to B3) recorded S84°01'35"E - 1,644.83 feet

(A3 to A4) recorded South- 2,644.30 feet

- 7) **24-March-1980** - Corner referenced in a recorded survey by Austin C. Williams, P.S. #21275 as recorded in Liber 3 page 1221 of Surveys, Ingham County Records.

Southwest corner of Sec. 6, T4N-R2E

N43°E 41.10' nail N. base 30" White Oak

S72°30'E 29.97' nail N. base 24" Maple

S54°W 31.82' nail N. base power pole

- 8) **13-December-1990** - Corner referenced in a recorded survey by Austin C. Williams, P.S. #21275 as recorded in Liber 6 page 591 of Surveys, Ingham County Records.

Southwest corner Sec. 6, T4N, R2E

N43°E 41.10' nail N. base 30" White Oak

S72°E 29.97' nail N. base 24" Maple

S54°W 31.82' nail N. base power pole

NO FURTHER INFORMATION PROVIDED

LAND CORNER RECORDATION CERTIFICATE  
Filing Requirement of Act 74, Mich. P.A. 1970

For corners in

Locke Township

Ingham  
(County)

Located In:

Corner Code #

1. Public Land Survey

T 4N

R 2E

A-4

2. Property Controlling  
in Section

S

T

R

3. Miscellaneous  
Property in Sec.

S

T

R

S

T

R

B: 13 P: 262 10/21/2008 02:52 PM  
2008-041038 LAND CORNERS Receipt #47587  
Paula Johnson, Ingham County, Michigan

Pages: 2



Register of Deeds Stamp & File Number

4. Lot No. \_\_\_\_\_, Recorded Plat \_\_\_\_\_

5. Private Claims \_\_\_\_\_

I, Gilbert M. Barish, in a field survey on 11-June, 2008 do hereby state that under requirements of P.A. 74, Michigan P.A. of 1970, the corner points mentioned in lines 1 and 2 above were in conformance with regulations and rules therefore as required in the current manual of survey instructions of the United States Department of the Interior, Bureau of Land Management or by a decree of a Court of Law and /or that the corner points mentioned in lines 3, 4 and 5 above were in conformance with the rules of the Michigan Board of Land Surveyors or by a Decree of a Court of Law; established, re-established, monumented, recovered, found as expressed below:

**NOTE: Not more than 2 corners, all in the same town and range, may be recorded on this certificate.**

A. Description of original monument and accessories and/or subsequent restoration:

1) **Corner not originally established during Joseph Wamplers Apr. 1826 Survey**

	A	B	C	D	E	F	G	H	I	J	K	L	M
1													
2	6			5		4		3		2		1	
3													
4	7			8		9		10		11		12	
5													
6	18			17		16		15		14		13	
7													
8	19			20		21		22		23		24	
9													
10	30			29		28		27		26		25	
11													
12	31			32		33		34		35		36	
13													

(Continued on Sheet 2)

P.A. 345 INGHAM COUNTY  
PEER APPROVED 8/19/2008 m

B. Description of corner evidence found and/or method applied in restoring or reestablishing corner:

No evidence of the corner exists at this location. The area falls within a cut section along shaftsburg road with a slight fill to the east of the roadway.

CETA files as referenced in item 2 above, show excavations east of the centerline of shaftsburg road within the area of the prorated location on 22-Sept-1978. The area started 6 feet south of the prorated location and extended north a distance of 10 feet and east and west of the centerline by 5 feet to a depth of 2.8 feet. No evidence was recovered. A 1" iron was recovered at the intersection of Epplly and Shaftsburg roads, but deemed not A-4 by the CETA program.

During the work conducted by CETA, this corner is recorded by surveyor Paddison in item 3 above as a 1" iron at the intersection of Epplly and Shaftsburg road.

A note in the file by L. Bryan indicates that a letter shall be sent to R.L. Paddison (item 3 above) "...to see if he is going to record the 1" iron as A-4, Locke, if not this corner is lost." 08-Nov-1978. On 21-Nov-1978, R. Lester sent a letter to Paddison indicating "...corner is lost as far as we are concerned." On 03-May-1979, R. Lester notes "...This corner is not recorded as no information is given on L.4, P. 204, (item 3 above) for A-4. Corner obviously will not be recorded by Paddison. Corner lost..."

(Continued on Sheet 2)

Measurements based on GPS observations on 02 June, 2008:

(A-4 to A-3) - 2,643.17' (A-4 to B-4) - 1,566.61' (A-4 to A-5) - 2,643.16' (A-4 to M-4) - 15.46'

C. Description of monument for corner and accessories established to perpetuate locating the position of the corner:

Set standard Ingham County 3/4" X 24" smooth steel bar and cap stamped "P.A. 345, PS 47942" in a monument box in the centerline of Shaftsburg Road. (ASPHALT)

Found Ingham County nail & tag in the West face of a Util. pole	S32°W	60.41'
Found nail & tag #28414 (M. Mahieu) in the South face of a 52" Oak	N82°W	54.73'
Found nail & tag #28414 in the East face of a Util. pole	N14°W	109.87'
Found bar & cap #28414 in the centerline of Shaftsburg Road	S04°E	26.00' (ASPHALT SURFACE)
M-4, East 1/4 Corner, Section 12, Williamstown Twp.	S04°E	15.46'

Notes:

- 1) Witness bearings reference magnetic North. The magnetic declination at the time of observations is 6°20' West
- 2) Set nail and tag is a Magnetic nail and 1-1/2" aluminum tag stamped "INGHAM WITNESS PA 345"

Signed by Gilbert M. Barish

Date 28-Aug-2008

Surveyor's Michigan License No. 47942



**Part "A" continued – A-4, T4N, R2E, Ingham County, Michigan**

- 2) **11-Sept-1977** - CETA files indicate that excavations occurred at various locations within the area of A-4. The corner was identified as lost. The file further indicates that a letter to Paddison (Item 3) shall be sent indicating that the corner is lost.
- 3) **25-May-1978** - Land Corner Recordation Certificate by W. Lee Paddison, P.S. #7256 as recorded in Liber 4, page 204 of corners. Parts A, B, and C not completed for A-4 though it is listed as a property controlling corner in the index at the top of the page.  
The sketch of the L.C.R.C. states:  
A-4 W. 1/4 corner, Sec. 7  
Found 5/8" iron rod in place.  
C/L Eply Rd. W. & Shaftsbury Rd.  
No other witnesses.
- 4) **19-July-1979** – Corner referenced in a recorded survey by Larry A. Bryan, P.S. #25832 as recorded in Liber 3 page 931 of Surveys, Ingham County Records.  
West 1/4 corner Section 7, T4N, R2E  
Set 1/2" bar & cap in centerline of road  
Fd. nail & tag North side power pole, S30W, 58.70'  
Set nail & tag #25832 West side 10" Elm, N15E, 130.90'  
Fd. 1/2" bar, East 1/4 corner Section 12, T4N, R1E, South 25.00'
- Measurements: (A-4 to A-3) recorded North– 2,644.30 feet
- 5) **27-August-1979** - Land Corner Recordation Certificate by Larry A. Bryan, P.S. #25832 as recorded in Liber 5, page 282 of corners.

**Part "A" states:** No record of corner being established in original Government Survey.

**Part "B" states:** A-4 Set corner midway between Northwest and Southwest corners of Section 7 in close accord with G. L. O. distances on existing Township line. Corner falls in the centerline of Shaftsbury Road and 25' North of the Centerline of Eply Road to West. Corner is 25.00' North of the East 1/4 corner of Section 12, T4N, R1E, as recorded in Liber 4, page 316.

**Part "C" states:** A-4 West 1/4 corner of Section 7, T4N, R2E  
Set 1/2" iron bar with cap at above location  
Set nail and tag, R.L.S. #25832, West side of 12" Elm, N15°E, 130.90'  
Found nail and tag, North side of power pole, S30°W, 58.70'  
Found 1/2" bar, East 1/4 corner of Section 12, T4N, R1E, South, 25.00'

**Part "B" continued – A-4, T4N, R2E, Ingham County, Michigan**

This corner was established by Larry Bryan, P.S. in item 5 above. No evidence remains of either the corner that was set or the witnesses to the location. He indicates that the corner was set midway and on line between A-3 and A-4

I calculated a position midway between the true positions at A-3 and A-5. The location falls within a previous excavation by Geodetic Designs Inc. conducted in 2006 to recover the location of M-4. No evidence was recovered during that excavation.

There is a 400 feet long section of fence line located 1,340 feet east of this location. A projection of a line from the corner at C-4 through the fence line intersected the west line of section 7 nominally 30 feet south of the prorated position. The location falls 15 feet south of M-4 which is not consistent with GLO fallings at A-5 (Common to M-5) and A-3 (3.35 feet south of M-3).

I agree with the previous findings of the CETA program in item 2 above and find no convincing argument to accept the recordation in item 3 above. I set this corner on the standard township line midway between the corners located at A-5 and A-3. I set a 3/4" x 24" smooth steel bar and aluminum Ingham County remonumentation cap stamped "P.S. 47942" in a monument box near the centerline of Shaftsbury Road.

**NO MORE INFORMATION PROVIDED**

LAND CORNER RECORDATION CERTIFICATE  
Filing Requirement of Act 74, Mich. P.A. 1970

For corners in

Locke Township

Ingham  
(County)

Located In:

Corner Code #

1. Public Land Survey

T 4N

R 2E

B-3

T

R

T

R

T

R

B: 13 P: 265 10/21/2008 02:52 PM  
2008-041041 LAND CORNERS Receipt #47587  
Paula Johnson, Ingham County, Michigan

Pages: 2

2. Property Controlling  
in Section

S

T

R

3. Miscellaneous  
Property in Sec.

S

T

R

S

T

R

S

T

R



Register of Deeds Stamp & File Number

4. Lot No. \_\_\_\_\_, Recorded Plat \_\_\_\_\_

5. Private Claims \_\_\_\_\_

I, Gilbert M. Barish, in a field survey on 19 June, 2008 do hereby state that under requirements of P.A. 74, Michigan P.A. of 1970, the corner points mentioned in lines 1 and 2 above were in conformance with regulations and rules therefore as required in the current manual of survey instructions of the United States Department of the Interior, Bureau of Land Management or by a decree of a Court of Law and/or that the corner points mentioned in lines 3, 4 and 5 above were in conformance with the rules of the Michigan Board of Land Surveyors or by a Decree of a Court of Law; established, re-established, monumented, recovered, found as expressed below:

**NOTE: Not more than 2 corners, all in the same town and range, may be recorded on this certificate.**

A. Description of original monument and accessories and/or subsequent restoration:

1) 01-April-1826 - Corner set by Deputy Surveyor Joseph Wampler  
Page 65 of the Ingham County GLO notes.

Set W P fw

At 40.00 ch. (2,640.00 feet)

Witnesses: WO 11 S14 1/2W, 12 lks.

WO 12 N33E, 6 1/2 lks.

(Continued on Sheet 2)

B. Description of corner evidence found and/or method applied in restoring or reestablishing corner:

Searched at the location identified in item 3 above. Found a 1/2" steel bar and cap# 25832 in a stone pile.

A measurement from A-3 to C-3 yielded a distance of 4,272.53 feet. The GLO distance between the same positions is 64.56 chains (4,260.96 feet). A prorated distance between A-3 and C-3 pointed to a search area that was 19 feet to the west of the recovered position. The terrain between A-3 and C-3 is very hilly. The location of the found 1/2" bar is near a high point in the surrounding terrain.

We excavated 10 feet (east and west) x 4 feet (north and south) X 2 feet deep hole centered at the prorated GLO distance. The excavation revealed no historical evidence of corner. We did recover remnants of an east and west fence line.

We excavated under the found 1/2" bar and cap and found 15 medium sized stones along with fence line remnants. The wood anchor post referenced in item 4 above no longer exists. There is a history of County Surveyor activity within this section by C.S. A. Jackson in item 2 above, however, there is no reference to this corner in his notes as he passed this location while observing the south line of section 6.

I held the position of the found 1/2" bar and cap in a stone pile as the best available evidence of corner based on the historical county surveyor activity in item 2 above and the evidence recovered by Surveyor Bryan in Item 4 above. I replaced the 1/2" bar and cap with a 3/4" X 24" smooth steel bar and aluminum Ingham County remonumentation bar and cap stamped #47942. Set an orange carsonite marker 0.9' East.

Measurements based on GPS observations on 02 June, 2008:

(B-3 to B-2) - 2,644.62' (B-3 to C-3) - 2,628.14' (B-3 to B-4) - 2,639.95' (B-3 to A-3) - 1,644.39'

C. Description of monument for corner and accessories established to perpetuate locating the position of the corner:

Set standard Ingham County 3/4" X 24" smooth steel bar and cap stamped "P.A. 345, PS 47942" in a East-West fence line with an orange carsonite marker next to the location.

Set nail & tag in the West face of an 18" Silver Maple

N38°E 48.24'

Found nail & tag #25832 in East face of a 7" Maple

N04°E 17.43'

Set nail & tag in the South face of an 18" Cottonwood

N49°W 20.71'

Set nail & tag in the South face of an 18" Cherry

S33°E 5.08'

Found nail & tag #25832 in the North face of a 6" Oak

S72°E 16.43'

Notes:

1) Witness bearings reference magnetic North. The magnetic declination at the time of observations is 6°20' West

2) Set nail and tag is a Magnetic nail and 1-1/2" aluminum tag stamped "INGHAM WITNESS PA 345"

Signed by Gilbert M. Barish

Date 28-Aug-2008

Surveyor's Michigan License No. 47942

P.A. 345 INGHAM COUNTY  
PEER APPROVED 8/19/2008 ML

Part "A" continued – B-3, T4N, R2E, Ingham County, Michigan

- 2) **23-February-1856** – Survey by County Survey A. Jackson references the corner at A-3 and runs the south line of Section 6 to a point 240 rods East of A-3 passing the corner at B-3 but making no reference by distance measure or witnesses to the location.
- 3) **19-July-1979** – Corner referenced in a recorded survey by Larry A. Bryan, P.S. #25832 as recorded in Liber 3 page 931 of Surveys, Ingham County Records.  
 North 1/4 corner Section 7, T4N, R2E  
 Set 1/2" bar & cap at anchor post.  
 Set nail & tag South side 6" wild cherry, East, 5.00'  
 Set nail & tag North side 5" thornapple, S70E, 18.04'  
 Set nail & tag North side 8" elm, S75W, 18.87'

Measurements: (B-3 to C-3) recorded S84°06'02"E – 2,624.22 feet  
 (B- to A-3) recorded S84°01'35"E – 1,644.83 feet

- 4) **27-August-1979** - Land Corner Recordation Certificate by Larry A. Bryan, P.S. #25832 as recorded in Liber 5, page 284 of corners.

**Part "A" states:**

B-3 Post set in original Government Survey by Joseph Wampler, circa March-April, 1826.

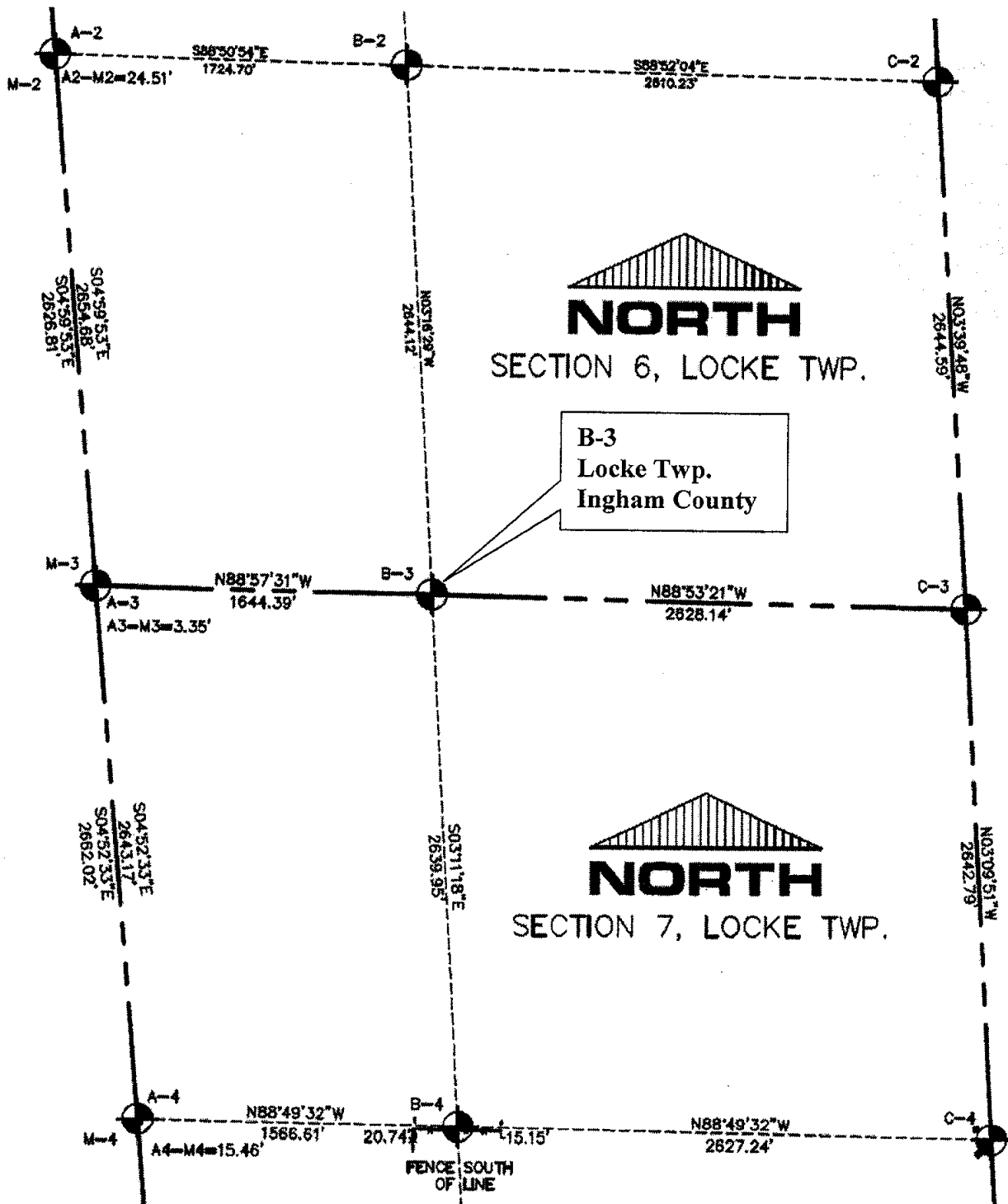
**Part "B" states:**

B-3 Found large anchor post on East-West fence line. Measured East and West in close accord with G.L.O. distances.

**Part "C" states:**

B-3 North 1/4 corner of Section 7, T4N, R2E  
 Set 1/2" iron bar with cap at base of anchor post.  
 Set nail and tag, R.L.S. #25832, South side of 6" Cherry, East, 5.00'  
 Set nail and tag, R.L.S. #25832, North side of 5" Thornapple, S70°E, 18.04'  
 Set nail and tag, R.L.S. #25832, North side of 8" Elm, S75°W, 18.87'

*Locke Township Section Model, B-3, Section 6, T4N, R2E, Ingham Co., Michigan*



LAND CORNER RECORDATION CERTIFICATE  
Filing Requirement of Act 74, Mich. P.A. 1970

For corners in

Locke Township

Ingham  
(County)

Located In:

Corner Code #

1. Public Land Survey

T 4N R 2E B-4

2. Property Controlling  
in Section

S T R

3. Miscellaneous  
Property in Sec.

S T R

4. Lot No. \_\_\_\_\_, Recorded Plat \_\_\_\_\_

5. Private Claims \_\_\_\_\_

I, Gilbert M. Barish, in a field survey on 19 June, 2008 do hereby state that under requirements of P.A. 74, Michigan P.A. of 1970, the corner points mentioned in lines 1 and 2 above were in conformance with regulations and rules therefore as required in the current manual of survey instructions of the United States Department of the Interior, Bureau of Land Management or by a decree of a Court of Law and/or that the corner points mentioned in lines 3, 4 and 5 above were in conformance with the rules of the Michigan Board of Land Surveyors or by a Decree of a Court of Law; established, re-established, monumented, recovered, found as expressed below:

**NOTE: Not more than 2 corners, all in the same town and range, may be recorded on this certificate.**

A. Description of original monument and accessories and/or subsequent restoration:

1) Corner not originally established during Joseph Wamplers Apr. 1826 Survey

(Continued on Sheet 2)

P.A. 345 INGHAM COUNTY  
PEER APPROVED 8/19/2008

B. Description of corner evidence found and/or method applied in restoring or reestablishing corner:

A search of the apparent area yielded no physical evidence of a corner at this location. There is no record of previous County Surveyor activity within this section or record efforts by others to establish this corner.

The mathematical intersection of lines to the opposing section corners generate a position that is located on the south edge of a field line that is 18 feet north of an old downed East and West fence line. The origin of the fence is unknown and it does not appear to parallel the line between C-4 and A-4.

I established this corner at the mathematical intersection of right lines to the opposing section corners. I set a 3/4" x 24" smooth steel bar and aluminum Ingham County remonumentation cap stamped #47942 roughly 18 feet North of a downed fence line at the edge of a field line 12 inches below the surface of the ground

Measurements based on GPS observations on 02 June, 2008:

(B-4 to B-3) - 2,639.95' (B-4 to C-4) - 2,627.24' (B-4 to B-5) - 2,637.11' (B-4 to A-4) - 1,566.61'

C. Description of monument for corner and accessories established to perpetuate locating the position of the corner:

**Set standard Ingham County 3/4" X 24" smooth steel bar and cap stamped "P.A. 345, PS 47942 at the edge of a field line 12 inches below the ground surface.**

Set nail & tag in the North face of a 6" Twin Maple	S61°E	25.00'
Set nail & tag in the Northeast face of an 8" Oak	S31°E	40.60'
Set nail & tag in the Northwest face of a 26" Oak	S25°W	33.62'
Set nail & tag in the South face of an 18" Cherry	S72°W	51.25'

Notes:

- 1) Witness bearings reference magnetic North. The magnetic declination at the time of observations is 6°20' West
- 2) Set nail and tag is a Magnetic nail and 1-1/2" aluminum tag stamped "INGHAM WITNESS PA 345"

Signed by

Gilbert M. Barish

Date

28-Aug-2008

Surveyor's Michigan License No. 47942

FORM APPROVED BY MICHIGAN STATE BOARD OF PROFESSIONAL SURVEYORS, JAN. 28, 1971  
REVISED MAY 14, 1975  
REVISED JAN., 1983  
REVISED OCT., 1995

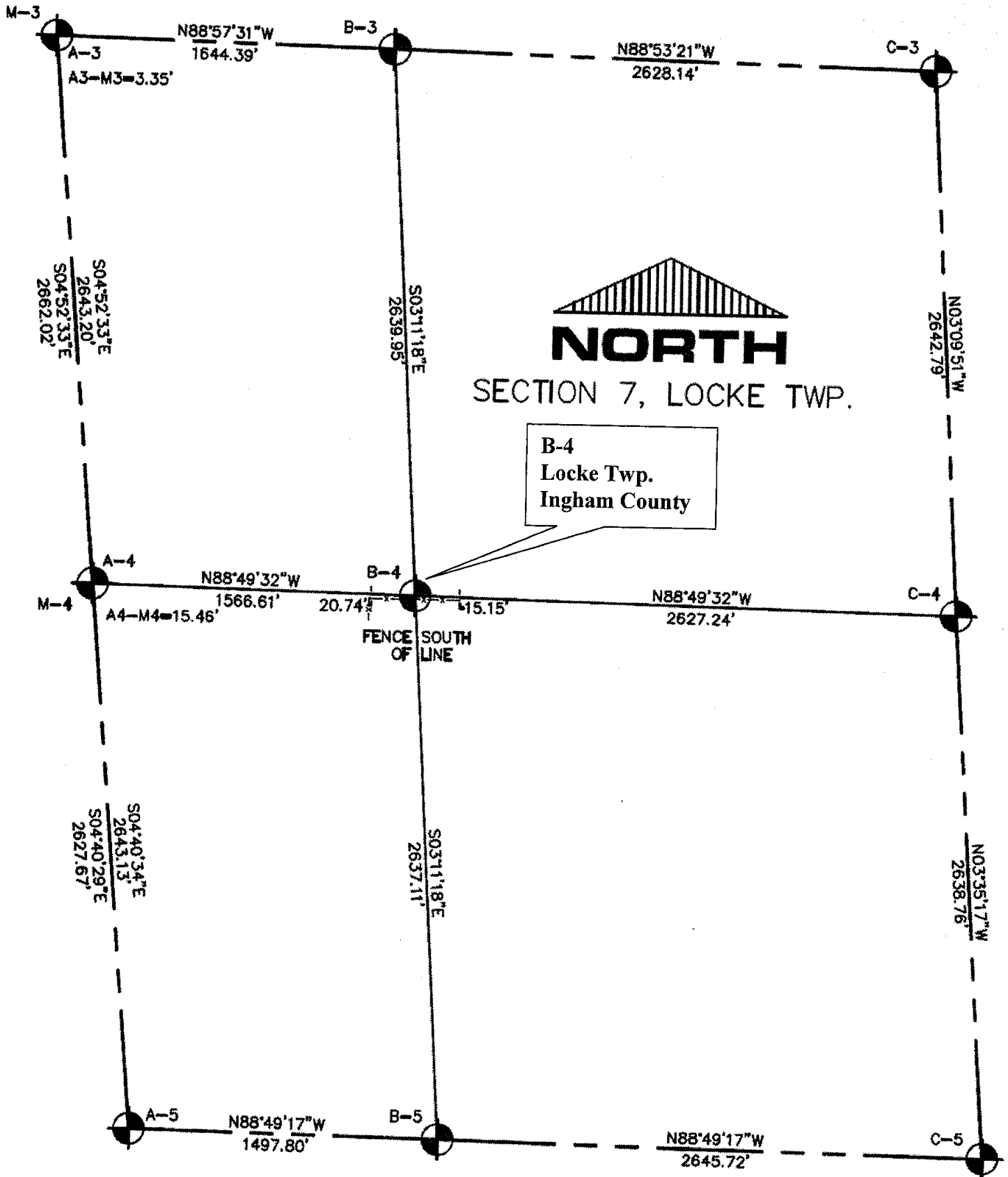
Register of Deeds Stamp & File Number

	A	B	C	D	E	F	G	H	I	J	K	L	M
1													
2		6		5		4		3		2		1	
3													
4		7		8		9		10		11		12	
5													
6		18		17		16		15		14		13	
7													
8		19		20		21		22		23		24	
9													
10		30		29		28		27		26		25	
11													
12		31		32		33		34		35		36	
13													



Part "A" continued - B-4, T4N, R2E, Ingham County, Michigan

Locke Township Section Model, B-4, Section 6, T4N, R2E, Ingham Co., Michigan





LAND CORNER RECORDATION CERTIFICATE  
Filing Requirement of Act 74, Mich. P.A. 1970

For corners in

Locke Township

Ingham  
(County)

Located In:

Corner Code #

1. Public Land Survey

T 4N R 2E B-5

2. Property Controlling  
in Section

S T R

3. Miscellaneous  
Property in Sec.

S T R

4. Lot No. \_\_\_\_\_, Recorded Plat \_\_\_\_\_

5. Private Claims \_\_\_\_\_

B: 13 P: 267 10/21/2008 02:52 PM  
2008-041043 LAND CORNERS Receipt #47587  
Paula Johnson, Ingham County, Michigan

Pages: 2



Register of Deeds Stamp & File Number

I, Gilbert M. Barish, in a field survey on 18 June, 2008 do hereby state that under requirements of P.A. 74, Michigan P.A. of 1970, the corner points mentioned in lines 1 and 2 above were in conformance with regulations and rules therefore as required in the current manual of survey instructions of the United States Department of the Interior, Bureau of Land Management or by a decree of a Court of Law and /or that the corner points mentioned in lines 3, 4 and 5 above were in conformance with the rules of the Michigan Board of Land Surveyors or by a Decree of a Court of Law; established, re-established, monumented, recovered, found as expressed below:

NOTE: Not more than 2 corners, all in the same town and range, may be recorded on this certificate.

A. Description of original monument and accessories and/or subsequent restoration:

- 1) 01-April-1826 - Corner set by Deputy Surveyor Joseph Wampler  
Page 64 of the Ingham County GLO notes.  
Set W P fw  
At 40.00 ch. (2,640.00 feet)  
Witnesses: BO 8 N36W, 28 lks.  
WO 17 S12W, 66 lks.

(Continued on Sheet 2)

B. Description of corner evidence found and/or method applied in restoring or reestablishing corner:

Searched at the apparent location of the corner and found a railroad spike in the asphalt in the centerline of Haslett Road. Measurements to the corner located at B-5 indicate that the corner is 2,640.0 feet west of C-5. There is no fence line evidence north or south of this location. The recovered location is 6.15 feet East and 2.53 feet north of a pro-rated GLO location between C-5 and A-5.

The corner was originally set by Clyde Stephens in item 3 above by setting a rail road spike 2,640 feet west of C-5 in the centerline of Haslett Road. The recordation sheet shows no attempted to excavate at this location or reference any historical occupation that supports the location. The corner was utilized to create new parcels from tracts that are described by aliquot parts and acreage descriptions.

I do not believe this corner was established based on published and accepted guidelines. I computed a location based on the prorated distance between C-5 and A-5 on line between the two corners. I excavated 4'x4'x2' hole centered around the prorated distance along the section line and did not find any evidence of the corner location.

Based on the lack of evidence to restore this corner as obliterated, I deemed the position lost and established the location based on accepted guidelines setting the corner by GLO proration between the positions at C-5 and A-5.

I set a standard 3/4" x 24" steel bar and aluminum Ingham County remonumentation cap stamped P.S. #47942 on the line between A-5 and C-5 at the prorated distance in a monument box approximately 2.5 feet south of the centerline of Haslett Road. *In a monument Box.*

Measurements based on GPS observations on 02 June, 2008:

(B-5 to A-5) - 1,497.80' (B-5 to B-4) - 2,637.11' (B-5 to C-5) - 2,645.72'

C. Description of monument for corner and accessories established to perpetuate locating the position of the corner:

Set standard Ingham County 3/4" X 24" smooth steel bar and cap stamped "P.A. 345, PS 47942" nominally 2.5 feet south of the centerline of Haslett Road (Asphalt). *In a monument Box.*

Standard Corner:

Set nail & tag in the Northeast face of an 8" Pine N30°W 63.23'  
Set nail & tag in the Southeast face of a 6" Pine N33°E 50.53'  
Set nail & tag in the Northwest face of a 26" Oak S49°E 67.62'  
Set nail & tag in the South face of an 18" Cherry S60°W 49.40'  
Found P.K. nail in top of culvert S71°W 46.72'  
Found railroad spike in the centerline of Haslett Road N71°E 6.65'

Property Controlling Corner:

Northwest corner of garage S11°E 113.30'  
Fd. nail and tag #25832 in the East face 22" Cherry S29°W 129.57'  
Centerline of iron anchor post S49°W 55.65'  
Found standard corner P.S. #47942 at B-5 S71°W 6.65'

Notes:

- 1) Witnesses reference magnetic North. The declination is 6°20' W  
2) Set nail and tag is a Magnetic nail and 1-1/2" aluminum tag stamped "INGHAM WITNESS PA 345"

Signed by Gilbert M. Barish

Date 28-Aug-2008

Surveyor's Michigan License No. 47942

Part "A" continued - B-5, T4N, R2E, Ingham County, Michigan

- 2) 20-March-1978 Corner referenced in the CETA file by L. Bryan.
- 3) 26-July-1972 - Land Corner Recordation Certificate by Clyde K. Stephens, P.S. #3829 as recorded in Liber 2, page 5 of corners.

Part "A" states: Original monument and accessories obliterated.

Part "B" states: A railroad spike was set 2640.0 feet from the NE. corner of the section, in the centerline of the section line road (Haslett Road.)

Part "C" states: The railroad spike set at the N1/4 corner was witnessed with the following;  
 Survey tag in the S. side of a utility pole N68°47'W 170.05 feet.  
 Survey tag in the N. side of a 24 inch Wild Cherry S87°19'W 170.0 feet.  
 S5°12'E 113.3 feet to the NW. corner of a frame garage.  
 The bearing of the section line east of the corner is S89°57'E.  
 The bearing of the section line west of the corner is S89°48'W.  
 The bearing of the 1/4 line south of the corner is S4°15'53"E.

- 4) 19-July-1979 - Corner referenced in a recorded survey by Larry A. Bryan, P.S. #25832 as recorded in Liber 3 page 931 of Surveys, Ingham County Records.  
 South 1/4 corner Section 7, T4N, R2E  
 Found R.R. spike in centerline of road  
 Northwest corner of garage, S5°E, 113.30'  
 Set nail & tag #25832 East side 22" wild cherry, S35°W, 129.57'  
 Centerline of iron anchor post, S55°W, 55.65'

Measurements: (B5 to A5) recorded S84°08'30"E - 1,500.32 feet (MEASUREMENT TO PROPERTY CONTROLLING CORNER AT A-5)  
 (B5 to B3) recorded N01°36'26"E - 5,272.63 feet

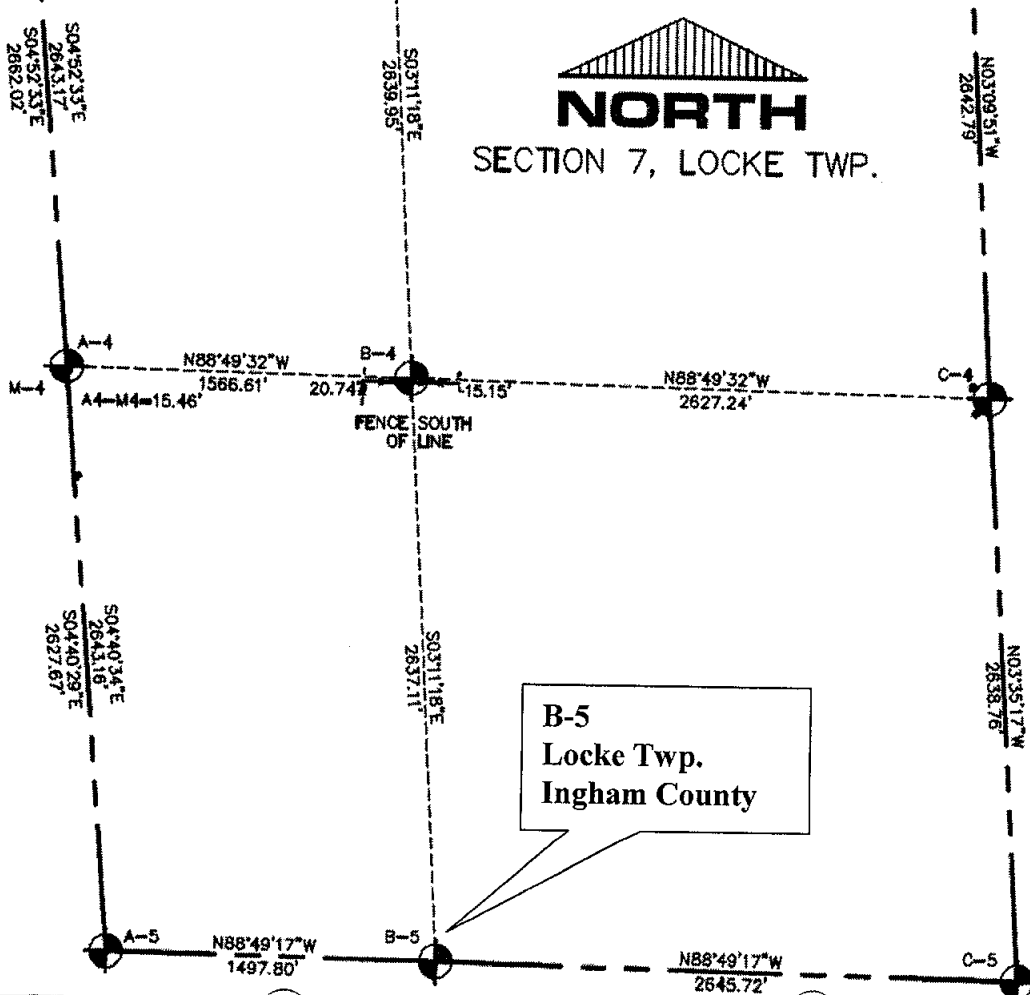
- 5) 23-February-1995 - Corner referenced in a recorded survey by Larry A. Bryan, P.S. #25832 as recorded in Liber 7 page 514 of Surveys, Ingham County Records.  
 South 1/4 corner Section 7, T4N, R2E, Liber 2, page 5  
 Found R.R. spike in centerline of road  
 Northwest corner of garage, S5°E, 113.30'  
 Fd. nail & R.L.S. 25832 East side 22" Wild Cherry, S35°W, 129.57'  
 Centerline of iron anchor post, S55°W, 55.65'

Measurements: (B5 to A5) recorded N84°03'58"W - 1,503.90 feet (MEASURED TO TRUE CORNER AT A-5)

- 6) 29-March-1995 - Corner referenced in a recorded survey by Larry A. Bryan, P.S. #25832 as recorded in Liber 7 page 560 of Surveys, Ingham County Records.  
 South 1/4 corner Section 7, T4N, R2E, Liber 2, page 5  
 Found R.R. spike in centerline of road  
 Northwest corner of garage, S5°E, 113.30'  
 Fd. nail & R.L.S. 25832 East side 22" Wild Cherry, S35°W, 129.57'  
 Centerline of iron anchor post, S55°W, 55.65'

Measurements: (B5 to A5) recorded N84°03'58"W - 1,503.90 feet (MEASURED TO TRUE CORNER AT A-5)

Locke Township Section Model, B-5, Section 6, T4N, R2E, Ingham Co., Michigan



DEC 04 2006

SECTION

LAND CORNER RECORDATION CERTIFICATE  
Filing Requirement of Act 74, Mich. P.A. 1970

For corners in

Williamstown Township

INGHAM  
(County)

Located In:

Corner Code #

1. Public Land Survey

T 4N R 1E M-5  
T 4N R 2E A-5 ✓

2. Property Controlling  
in Section

S T R  
S T R

3. Miscellaneous  
Property in Sec.

S T R  
S T R

8:13 P:41 11/30/06 1:35 PM Pages: 2  
2006-052752 LAND CORNERS Receipt #20130  
Paula Johnson, Ingham County, Michigan



Register of Deeds Stamp & File Number

4. Lot No. \_\_\_\_\_, Recorded Plat \_\_\_\_\_

5. Private Claims \_\_\_\_\_

*30 OCT 2006*  
I, Gilbert M. Barish, in a field survey on 6 June/30 June, 2006 do hereby state that under requirements of P.A. 74, Michigan P.A. of 1970, the corner points mentioned in lines 1 and 2 above were in conformance with regulations and rules therefore as required in the current manual of survey instructions of the United States Department of the Interior, Bureau of Land Management or by a decree of a Court of Law and/or that the corner points mentioned in lines 3, 4 and 5 above were in conformance with the rules of the Michigan Board of Land Surveyors or by a Decree of a Court of Law; established, re-established, monumented, recovered, found as expressed below:

NOTE: Not more than 2 corners, all in the same town and range, may be recorded on this certificate.

A. Description of original monument and accessories and/or subsequent restoration:

1) March 1826 - Corner originally set by Joseph Wampler D.S. in a GLO survey.

Page 21 of the Ingham County GLO notes.

Set quarter post fw

Witnesses: White Oak 15 N73°W, 11.5 links (7.59')

White Oak 13 S41-1/2°W, 78 links (51.48')

Measurements: (M-5 to M-4) 40.00 ch. (M-5 to L-5) 40.00 ch.

P.A. 345 INGHAM COUNTY

PEER APPROVED 10/24/2006

Continued on Sheet 2



B. Description of corner evidence found and/or method applied in restoring or reestablishing corner:

Found a PA 345 Disc and Cap #41917 in a monument box at this location. Notes contained in Ingham County Field Book "WM-2" as compiled by R. Harris, P.S. #41917 indicate the following: "Found 1/2" rebar in monument box."

Searched location at M-5, found P.A. 345 bar & cap #41917 (Ron Harris) in monument box at the intersection of centerlines for Shaftsbury Road and Haslett Road. Witness to Ron Lester nail & tag (Item 8 Part A) did not match by 4 feet. Measured witness distance from Lester tag and observed a strong magnetic reading in the asphalt. Excavated location and found 1/2" bar encased in concrete 6" below the surface of the asphalt as recorded by Ron Lester in item 8 part A above. Removed Harris P.A. 345 cap from the property controlling corner to avoid confusion with the true remonumented location for M-5 (T4N, R1E) and A-5 (T4N, R2E).

Accepted the location of the 1/2" bar in concrete as a faithful perpetuation of the original government corner based on previous excavation and monument perpetuation by Mr. Ronnie Lester, P.S. in item 2 part A above. Notes contained in item 2 part A above indicate that the corner for A-5 Locke Township (T4N, R2E) is a common corner with M-5 Williamstown Township (T4N, R1E).

Measurements: (M-5 to M-4) -N 04-40-33 W, 2627.63 feet (M-5 to L-5) -S 89-46-59 W, 2617.39 feet

C. Description of monument for corner and accessories established to perpetuate locating the position of the corner:

Set standard Ingham County bar and cap stamped "P.A. 345, 47942" on 1/2" steel bar in concrete in monument box.

Corner falls 2.5' north of the centerline of Haslett Road and 4.5' west of the centerline of Shaftsbury Road.

S 47° W, 39.85' Found nail and tag "18998" in the North face of a Power Pole

S 47° W, 39.19' Found nail and tag "41917" in the West face of a Power Pole

N 05° W, 50.00' Found chiseled "X" in center of curb & gutter (North end)

S 36° E, 66.45' Found nail and tag #18998 in the Southwest face of a 28" Hickory

N 19° E, 50.79' Found chiseled "X" in center of curb & gutter (North end)

S 58° E, 4.04' Top of 5/8" bar in monument box set by Ron Harris

Property Controlling Corner:

S 51° W, 40.18' Found nail and tag "41917" in the Northwest face of a Power Pole

N 11° W, 52.79' Found chiseled "X" in center of curb & gutter (North end)

S 37° E, 62.76' Found nail and tag #18998 in the Southwest face of a 28" Hickory

N 13° E, 52.12' Found chiseled "X" in center of curb & gutter (North end)

N 58° W, 4.04' Top of 5/8" bar in monument box set by Ron Harris

Signed by

*Gilbert M. Barish*

Date

11-NOV-2006

Surveyor's Michigan License No. 47942

FORM APPROVED BY MICHIGAN STATE BOARD OF PROFESSIONAL SURVEYORS, JAN. 28, 1971

REVISED MAY 14, 1975

REVISED JAN., 1983

REVISED OCT., 1995

Part "A" continued - A-5, T4N, R2E, and M-5, T4N, R1E, Ingham County, Michigan

- 2) **March 1826** - A-5 Corner originally set by Joseph Wampler D.S. in a GLO survey.  
Page 64 of the Ingham County GLO notes.  
Intersect section line at post (A-5 Locke Twp.) and (M-5 Williamsstown Twp.) are a common corner  
Measurements: (A-5 to B-5) 22.66 ch.
- 3) **15-March-1889** - Corner referenced by County Surveyor John McCreary in V. 3, page 207 of county surveyors notes  
Calls for a stone.  
Witnesses:  
Red Oak 18 N35°E 65 links (42.9')  
Maple 3 N32-1/2°W 87.5 links (57.75')  
Hickory 6 S42°E 100 links (66')  
Measurements: (M-5 to L-5) 2610.96' (M-5 to M-4) 2628.12'
- 4) **1969** - Corner identified as a stone and boatspike on Ingham County Road Commission revised Grid map  
Witnesses:  
T.P. Northeast 44.34'  
16" Hickory Southeast 62.05'  
P.P. Southwest 41.51'
- 5) **26-July-1972** Land Corner Recordation Certificate by Clyde K. Stephens, P.S. #3829 as recorded in Liber 2 page 11 of corners.  
(This certificate is for A-5 Only).  
Part "A" states: A-5- The original monument and accessories obliterated  
Part "B" states: A-5 - The 1/2 inch iron rod was found in the centerline of two section line roads (Haslett Road and Shaftsbury Road).  
Part "C" states: A-5 - The 1/2 inch iron rod was found at the NW corner was left in position with the following witnesses:  
Survey tag in the S. Side of a utility pole N41°40'E, 44.15 feet  
Survey tag in the N. Side of a 30" Hickory S42°16'E, 61.70 feet  
Survey tag in the NE Side of a utility pole N42°56'W, 40.84 feet  
The bearing of the Section line south of this corner is S06°01'E  
The bearing of the Section line east of this corner is N89°48'E
- 6) **11-November-1977** Corner referenced in a recorded survey by LaVerne Hendryx, P.S. #3276 as recorded in Liber 3 page 459 of Surveys.  
No Witnesses listed.
- 7) **20-June-1979** Corner referenced in a recorded survey by Larry A. Bryan, P.S. #25832 as recorded in Liber 3 pages 931-933 of Surveys.  
Southwest corner of Section 7, T4N, R2E  
Fd. 3/4" bar in the centerline of roads  
Fd. Spike West side utility pole, N45°E, 44.73 feet  
Fd. Stephens tag in the North side of a 30" Hickory, S45°E, 61.64 feet  
Fd Stephens tag Northeast side power pole, S45°W, 40.82 feet  
Measurements: A-5 to B-5 (1500.32 feet) A-5 to M-4 (2619.31 feet)
- 8) **13-September-1979** Land Corner Recordation Certificate by Ronnie M. Lester, P.S. #18998 as recorded in Liber 5 page 301 of corners.  
Part "A" states: M-5- Post set in original government survey by J. Wampler dated between March 3 and 13, 1826.  
Corner identified as a stone in a survey by John McCreary, County Surveyor, Mar., 14, 1889 (V.3, P.207)  
Corner identified as a stone in the records of Wm. Berryman, County Surveyor, Date Unknown.  
Corner identified as a stone and boatspike in the records of Ingham Co. Road Comm., revised grid map, 1969  
Corner referred to in a recorded Land Survey by LaVerne Hendryx, Nov. 11, 1977 (L.3, P.459)  
Part "B" states: M-5 - Excavated an 8' x 6' hole to an average depth of 4.0', mostly north of the intersection of the centerlines of Haslett and Shaftsbury Roads. Found boatspike recorded as A-5 Locke Twp., T4N-R2E at the intersection of the centerlines of Shaftsbury and Haslett Roads. Found wooden stake between two stones 2.5' below road surface +/- 2.0' north of the centerline of Haslett Road and +/- 3.5' west of the centerline of Shaftsbury Road. Found pointed stone surrounded by small stones and brick 3.7' below road surface directly beneath wooden stake. Accepted stone for corner as called for in a survey by J. McCreary, County Surveyor. Measured north +/- 2618' to M-4, south +/- 2688' to M-6 and west +/- 2617' to L-5. Excavation conducted by Ingham County Survey and Remonumentation Project crew.  
Part "C" states: M-5 - NE Corner, Section 13, T4N-R1E  
Set 4"x 36" concrete monument with 1/2" x 38" rerod and cap #18998 with concrete collar and cover in location of stone described above:  
Nail and tag #18998, southwest side 24" Hickory, SE, 66.47'  
Nail and tag #18998, northwest side 1" Hickory, SW, 66.46'  
Nail and tag #18998, east side power pole, NNW, 127.83'  
Boatspike recorded as A-5 Locke Twp., T4N-R2E, SSE, 4.09'  
Top centerline buried cable box, NE 44.98'
- 9) **24-March-1980** Corner referenced in a recorded survey by Austin C. Williams, P.S. #21275 as recorded in Liber 3 page 1221 of Surveys.  
Witnesses: SW Cor. Sect. 6, T4N, R2E, N43°E, 41.10' nail N. base 30" White Oak; S72°30'E, 29.97' nail N. base 24" Maple; S54°W, 31.82' nail N. base power pole. Section line distances not shown.
- 10) **22-June-1985** Corner referenced in a recorded survey by Marvin F. Fouty, P.S. #18989 as recorded in Liber 4 page 1071 of Surveys.  
References Item 8 above for witnesses.
- 11) **09-April-1999** Corner referenced in a recorded survey by Ronnie M. Lester, P.S. #18998 as recorded in Liber 8 pages 616-616 of Surveys and in a separate survey recorded in Liber 8, pages 1068-1072 of surveys recorded in 26-August-2002  
Liber 5, Page 301 Concrete Monument and cap over stone  
Found Nail and tag #18998 S.W. side 24" Shagbark Mag.  
Az. 144°, 66.60'  
Found Nail and tag #18998 East side utility pole Mag. Az. 349°, 127.90'  
Set galvanized nail and 1 1/4" brass tag stamped "18998 LESTER" North side utility pole mag az. 226°, 38.81'  
Southwest corner entrance to school house mag. Az. 85°, 150.12'  
1/2" bar S.E. 4.06'  
2002 Witnesses:  
Liber 5, Page 301 Concrete Monument and cap over stone  
Set new Nail and tag #18998 S.W. side 24" Shagbark Mag.  
Az. 144°, 66.58'  
Found nail and tag stamped "18998" North side utility pole mag az. 225°, 38.80'  
Set galvanized nail and 1 1/4" brass tag stamped "18998 LESTER" East side utility pole mag az. 354°, 202.20'  
Set galvanized nail and 1 1/4" brass tag stamped "18998 LESTER" West side utility pole mag az. 175°, 206.70'  
1/2" bar in monument box S.E. 4.06'

APR 10 1995

FILED

LIBER 8 PAGE 364

Nov 30 8 13 AM '94

LAND CORNER RECORDATION CERTIFICATE  
Filing Requirement of Act 74, Mich. P.A. 1970

For corners in

Ingham  
(County)  
Locke

Located In:

Corner Code #

REGISTERED DEEDS  
Ingham County, Mich.

1. Public Land Survey

T 4N R 2E

C-3

T \_\_\_\_\_ R \_\_\_\_\_

T \_\_\_\_\_ R \_\_\_\_\_

T \_\_\_\_\_ R \_\_\_\_\_

T \_\_\_\_\_ R \_\_\_\_\_

2. Property Controlling  
in Section

S \_\_\_\_\_ T \_\_\_\_\_ R \_\_\_\_\_

S \_\_\_\_\_ T \_\_\_\_\_ R \_\_\_\_\_

3. Miscellaneous  
Property in Sec.

S \_\_\_\_\_ T \_\_\_\_\_ R \_\_\_\_\_

S \_\_\_\_\_ T \_\_\_\_\_ R \_\_\_\_\_

Register of Deeds Stamp & File Number

4. Lot No. \_\_\_\_\_, Recorded Plat \_\_\_\_\_

5. Private Claims \_\_\_\_\_

I, Marvin Fouty, in a field survey on Aug. 23, 1994, do hereby certify that under requirements of P.A. 74, Michigan P.A. of 1970, the corner points mentioned in lines 1 and 2 above were in conformance with regulations and rules therefore as required in the current manual of survey instructions of the United States Department of the Interior, Bureau of Land Management or by a decree of a Court of Law and/or that the corner points mentioned in lines 3, 4 and 5 above were in conformance with the rules of the Michigan Board of Land Surveyors or by a Decree of a Court of Law, established, re-established, monumented, re-monumented, recovered, found as expressed below:

NOTE: Not more than 4 corners, all in the same town and range, may be recorded on this certificate.

A. Description of original monument and accessories and/or subsequent restoration:

1. Post set in original Government Survey by Joseph Wampler in April 1826, witnessed by:  
Tam 9 S 51/2E 84-1/2 W.O. 9 S62E 200

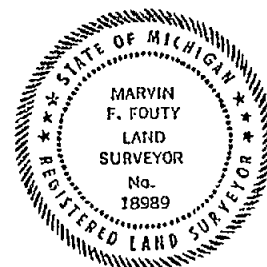
2. Larry A. Bryan LS# 25832 recorded corner on August 27, 1979 in Liber 5 of Corners, Page 283 Ingham Co. Records as a Found decayed anchor post surrounded by numerous 4"-8" diameter stones at the intersection of fence lines E, W, & S. The corner was replaced by 1/2" iron bar with cap in center of decayed anchor post with the following witnesses: Nail and tag in West side of 8" Ash, S30°E, 3.48' Nail and tag in West side of 22" Maple, N30°E, 30.54'; Nail and tag in West side of 20" Maple, N50°E 32.69' (Continued on back)

B. Description of corner evidence found and/or method applied in restoring or reestablishing corner:

Traversed Section and Found 1/2" bar & cap No. 25832 in decayed anchor post and fence lines E, W & S, with one of the Bryan witnesses remaining, the 8" Ash which has been cut off at the top; Excavated around post and found traces of stones. Measurements from the corner are: Bryan W2624.22'; Lester W2625.61'; Fouty W2624.89'; Lester N2643.56'; Fouty N2643.94'; Bryan E 2612.32'; Fouty E2611.64'; Bryan S2643.95'; Fouty S2643.27'. Accepted the Bryan iron as the best evidence of the perpetuation of the corner and replaced found bar and cap with Standard 3/4" x 24" Ingham County Remonumentation Bar and PA345 Cap #18989.

C. Description of monument for corner and accessories established to perpetuate locating the position of the corner:

Standard 3/4" x 24" Ingham County Remonumentation Bar and PA345 Cap #18989.  
Set Nail & Tag SW Side 18" Maple S 40°W 17.08'  
Set Nail & Tag S Side 10" Maple West 50.88'  
Set Nail & Tag E Side 24" Maple N15°W 72.08'  
Set Nail & Tag NE Side 18" Ash S70°E 47.58'  
Set Nail & Tag E Side twin 18" Maple S05°E 43.95'  
Found Nail & Tag #25832 in 8" Ash stump S30°E, 3.3'.



Signed by

Marvin Fouty

Date

Aug. 30, 1994

Surveyor's Michigan License No.

18989

P.A. 345 INGHAM COUNTY

FORM APPROVED BY MICHIGAN STATE BOARD OF LAND SURVEYORS, JAN. 28, 1974  
REVISED MAY 14, 1975  
REVISED JAN. 1993

Harry A. Bryan LS# 25832 used corner in a survey on June 20, 1979 recorded in Liber 3 of Surveys, Page 931  
set 1/2" bar and cap at fence intersection with same witnesses as in item # 2.

Surveyor Bryan's corner was tied into the survey of the Section as a 1/2" b & c, Bryan with no witness reference by  
Surveyor Ron Lester LS# 18998 in May of 1981. The unrecorded records of the results of the survey were supplied me by  
Surveyor Lester. The work was done for the Ingham County Remonumentation program.

SURVEY &  
REMONUMENTATION

APR 10 1995

COMMISSION

LIBER 8 PAGE 363

FILED

Nov 30 8 12 AM '94

LAND CORNER RECORDATION CERTIFICATE  
Filing Requirement of Act 74, Mich. P.A. 1970

RECORDS  
INCHAM COUNTY, MICH.

For corners in

Ingham  
County  
Locke

Located in:

Corner Code #

1. Public Land Survey

T 4N R 2E

C-4

2. Property Controlling  
in Section

S T R

3. Miscellaneous  
Property in Sec.

S T R

S T R

Register of Deeds Stamp & File Number

4. Lot No. Recorded Plat

5. Private Claims

I, Marvin Fouty, in a field survey on Aug. 23, 1994, do hereby certify that under requirements of P.A. 74, Michigan P.A. of 1970, the corner points mentioned in lines 1 and 2 above were in conformance with regulations and rules therefore as required in the current manual of survey instructions of the United States Department of the Interior, Bureau of Land Management or by a decree of a Court of Law and/or that the corner points mentioned in lines 3, 4 and 5 above were in conformance with the rules of the Michigan Board of Land Surveyors or by a Decree of a Court of Law; established, re-established, monumented, re-monumented, recovered, found as expressed below:

NOTE: Not more than 4 corners, all in the same town and range, may be recorded on this certificate.

A. Description of original monument and accessories and/or subsequent restoration:

1. Post set in original Government Survey by Joseph Wampler in April, 1826 with the following witnesses:  
W.O. 20 N63-1/2 E 29 D. O. 20 N2E 63

2. Larry Bryan LS# 25832 recorded the corner on April 28, 1987 in Liber 6 of Corners, Page 324 Ingham Co. Records as a set 1/2" bar in old anchor post with the following witnesses; Nail and tag south side 24" Hickory, N70°W, 67.80'; Nail and tag north side 12" Hickory, N40°E, 12.25'; Nail and tag east side 16" Oak, S10°E, 9.40'. No fence lines were noted.

B. Description of corner evidence found and/or method applied in restoring or reestablishing corner:

Searched in the vicinity of the corner from traverse information and found bar & cap #25832 at the intersection of fences N, S, and E. at base of rotted wood anchor post. Excavated a 4' diameter hole 2' deep around the anchor post but found no further evidence of corner location. The Bryan witnesses including the nail and tag in 12" Hickory, the Nail and tag in 24" Hickory (now broken off), and the Nail and tag in 24" Hickory (now broken off), and the 16" oak (now a stump); were remaining and agreed with his dimensions. The iron was in fence lines N, S, & E. Measurements from the corner are: Bryan E2617.12'; Fouty E2618.59'; Bryan N2643.95'; Fouty N2643.27'; Bryan S2638.68'; Fouty S2638.90'. There is no record of the County Surveyor having perpetuated the corner. Accepted the bar and cap as the perpetuation of the corner and replaced with Standard 3/4" x 24" Ingham County Remonumentation Bar and PA345 Cap #18989

C. Description of monument for corner and accessories established to perpetuate locating the position of the corner:

Standard 3/4" x 24" Ingham County Remonumentation Bar and PA345 Cap #18989.  
Set Nail & Tag NW Side 14" Hickory N40°E 12.00'  
Set Nail & Tag E Side 14" Hickory North 33.20'  
Set Nail & Tag N Side Twin 12' Hickory N85°E 30.07'  
Set Nail & Tag W Side 14" Hickory S01°W 35.79'  
Set Nail & Tag NW Side 16" Ash S25°W 169.13'  
Found Nail & Tag #25832 NW side 14" Hickory N45°E, 12.10'  
Found Nail & Tag #25832 E. side 20" stump S10°E 9.30'  
Found Nail & Tag #25832 S. side 30" broken Hickory N70°W 68.0'

Signed by

Marvin Fouty

Date

Oct. 5, 1994

Surveyor's Michigan License No.

18989



P.A. 345 INGHAM COUNTY

FORM APPROVED BY MICHIGAN STATE BOARD OF LAND SURVEYORS, JAN. 28, 1971  
REVISED MAY 14, 1975  
REVISED JAN. 1983

# SURVEY & REMONUMENTATION

APR 10 1995

COMMISSION

LIBER 8 PAGE 366

FILED

Nov 30 8 13 AM '94

## LAND CORNER RECORDATION CERTIFICATE

Filing Requirement of Act 74, Mich. P.A. 1970

For corners in

Ingham County  
Lake

Located In:

Corner Code #

1. Public Land Survey

T 4N R 2E

C-5

2. Property Controlling in Section

S T R

3. Miscellaneous Property in Sec.

S T R

Register of Deeds Stamp & File Number

4. Lot No. , Recorded Plat

5. Private Claims

I, Marvin Fouty, in a field survey on Aug. 23, 1994, do hereby certify that under requirements of P.A. 74, Michigan P.A. of 1970, the corner points mentioned in lines 1 and 2 above were in conformance with regulations and rules therefore as required in the current manual of survey instructions of the United States Department of the Interior, Bureau of Land Management or by a decree of a Court of Law and/or that the corner points mentioned in lines 3, 4 and 5 above were in conformance with the rules of the Michigan Board of Land Surveyors or by a Decree of a Court of Law; established, re-established, monumented, re-monumented, recovered, found as expressed below:

NOTE: Not more than 4 corners, all in the same town and range, may be recorded on this certificate.

A. Description of original monument and accessories and/or subsequent restoration:

1. Post set in original Government Survey by Joseph Wampler in April 1826 with the following witnesses:

Elm 12 S11E 12 DO 13 N70E 13

2. Surveyor Clyde K. Stephens LSH# 3829 recorded the corner on July 26, 1972 in Liber 2 of Corners, Page 13 Ingham Co. Records as a found 1/2" iron rod in the centerline of 2 section line Roads (Haslett & Harris) and on a projection of an old fence north of the corner with the following witnesses: Survey tag in the South side of a utility pole N40°58'W 42.53'; Survey tag in the South side of a utility pole N36°25'E 34.65'; Survey tag in the North side of a utility pole S23°03'E 74.75'

(continued on back)

B. Description of corner evidence found and/or method applied in restoring or reestablishing corner:

Found a 1/2" bar in the center of Haslett Road on the centerline of Harris Road to the South and a fence line to the north from witnesses. The C. Stephens witness in power pole in item 2A was intact, the other 2 Stephens power poles were gone. One witness from the LCRC records was intact, the twin 6", 8" Ash SE 73.43. The Measurements from the corner are Bryan E2612.33; Fouty E2612.51'; Bryan N2638.63'; Fouty N2638.90'; There was no record of the County Surveyor perpetuating the corner. I accepted the corner position as the best evidence of the corner and replaced the 1/2" bar with Standard 3/4" x 24" Ingham County Remonumentation Bar and PA345 Cap #18989 in monument box.

C. Description of monument for corner and accessories established to perpetuate locating the position of the corner:

Standard 3/4" x 24" Ingham County Remonumentation Bar and PA 345 Cap #18989 in monument box.  
Set Nail & Tag #16053 (J. Stephens) S face of Power Pole N 40°W 42.53'  
Set Nail & Tag #18989 W Side twin 18" Ash S. 43°E 73.50'  
Set Nail & Tag #18989 SE side 20" Hickory S75°W 100.72'  
Found Nail & Tag #18989 W face 36" Ash N08°W 56.80'



Signed by

Marvin Fouty

Date

Oct. 5, 1994

Surveyor's Michigan License No.

18989

P.A. 345 INGHAM COUNTY

FORM APPROVED BY MICHIGAN STATE BOARD OF LAND SURVEYORS, JAN. 28, 1971  
REVISED MAY 14, 1975  
REVISED JAN. 1993



3. Ronnie M. Lester LS# 18998 used corner in a survey on Oct. 26, 1972 recorded in Liber 1 of Surveys, Page 520 as found boat spike with the following witnesses:
  - Nail and tag south side power pole, NE, 34.62'
  - Nail and tag south side telephone pole, NW, 42.49'
  - Nail and tag north side power pole, SE, 74.76'
4. Ronnie M. Lester LS# 18998 used corner in a survey on March 27, 1973 recorded in Liber 1 of Surveys, Page 728 as set 1/2" bar with same witnesses as item 3.
5. Ronnie M. Lester LS# 18998 used corner in a survey on April 3, 1974 recorded in Liber 1 of Surveys, Page 1221 as set 1/2" bar with same witnesses as item 3.
5. Larry Bryan LS# 25832 reported using the corner in an unrecorded survey in March of 1991 with no record of monument or witnesses. Surveyor Bryan supplied me with his Section breakdown dimensions.
6. The Ingham County Road Commission records revealed an "iron" with the following witnesses:
  - 8" Elm NNW 41.81'
  - Anch. post SW 40.67'
  - T P SSW 49.28'
  - Tw 16", 24" Oak SSW 76.03'
  - Tw 6", 8" Ash SE 73.43'