

SURVEY & REMONUMENTATION

DEC 14 2004

LAND CORNER RECORDATION CERTIFICATE Filing Requirement of Act 74, Mich. P.A. 1970

SECTION

For corners in

Meridian Township

INGHAM
(County)

Located In:

Corner Code #

1. Public Land Survey

T 4N R 1W G-01

2. Property Controlling
in Section

S T R

3. Miscellaneous
Property in Sec.

S T R

Paula Johnson
INGHAM COUNTY
REGISTER OF DEEDS
OFFICIAL SEAL



L-11 P-279

CRNR 17.00

2004-072550



2004-072550

Page: 1 of 2
11/30/2004 08:07 A

Register of Deeds Stamp & File Number

4. Lot No. _____, Recorded Plat _____

5. Private Claims _____

I, Gilbert M. Barish, in a field survey on June 10, 2004 do hereby state that under requirements of P.A. 74, Michigan P.A. of 1970, the corner points mentioned in lines 1 and 2 above were in conformance with regulations and rules therefore as required in the current manual of survey instructions of the United States Department of the Interior, Bureau of Land Management or by a decree of a Court of Law and for that the corner points mentioned in lines 3, 4 and 5 above were in conformance with the rules of the Michigan Board of Land Surveyors or by a Decree of a Court of Law; established, re-established, monumented, recovered, found as expressed below:

NOTE: Not more than 2 corners, all in the same town and range, may be recorded on this certificate.

A. Description of original monument and accessories and/or subsequent restoration:

G-01:

- 1) Original Corner set by Musgrove Evans in 1827
"Intersected N. Boundary 40 lks (26.4 feet) East of 1/4 post of Sec. 33 and 34,
T.5N, R.1W, and set post cor to Sec. 3 and 4 fw a
W.O. 10 in S32E 78lks
D.O. 24 in S44 1/2 W 58 lks
Measured (G1-G2) - 39.15 chains (2583.9")

Continued on Sheet 2

B. Description of corner evidence found and/or method applied in restoring or reestablishing corner:

G-01: Found 1/2" steel bar in a low lying swampy area
Field investigation at the apparent location of the corner revealed a 1/2" X 18" steel bar 25.72 feet East of a Concrete Monument (G-13, Bath Township, Clinton County). Set offsets and removed the 1/2" steel bar. Excavated to a depth of 2.5' below the surface and did not recover additional evidence of the section corner. Intersecting the township line as established by Dwight Schofield, P.S. #34976 for the Clinton County Remonumentation program, and the East line of Section 4, Meridian Township as measured by Geodetic Designs (holding the found 1/2" steel bar for direction) indicated that the corner fell 1.88 feet south of the found 1/2" steel bar. Excavated 1.88 feet south and found 4"-6" cleaved stones piled 18" in diameter to a depth of 2.5 feet starting 4" below the surface of the ground. Remnants of an old fence were found lying at the surface of the ground. Additional holes dug within 4 feet of the found stone pile did not reveal stones of the size and type found. The area is swampy with heavy black, wet soils to a depth of 2 feet with wet gray clay lying below the 2-foot mark.

Accepted the found 1/2" steel bar as a faithful perpetuation of the original government corner and held the point for direction. Set 3/4" x 24" steel bar and cap stamped "P.A. 345, PS 47942" at the amended location on the standard township line at the intersection of the East line of section 4, Meridian Township at the location of the found stone mound. The corner was backfilled with surrounding soil and approximately 30 found stones. Replaced the 1/2" by 18" steel bar at the found location 1.88 feet north of the remonumented position. Measured (G1-G2) - 2588.72 (G1-F1) - 2606.34

C. Description of monument for corner and accessories established to perpetuate locating the position of the corner:

G-01: Set 3/4" x 24" steel bar and cap stamped "P.A. 345, PS 47942" at the amended location on the standard township line at the intersection of the East line of section 4, Meridian Township at the location of the found stone mound. The corner was backfilled with surrounding soil and approximately 30 found stones. Found 12" by 18" steel bar 1.88 feet north of the amended remonumented position.

NAZ 045°, 40.73', Found KEBS (Keyes Engineering Bryan Surveys) nail and tag in the East face of a 24" Poplar
NAZ 082°, 55.22', Set nail and tag #47942 (Barish) in the West face of a 50" triple Willow
NAZ 154°, 49.15', Found nail and tag #39100 (Terry Wiegman) in the West face of an 18" Cherry
NAZ 195°, 25.88', Set nail and tag #47942 (Barish) in the North face of a 12" Oak
NAZ 270°, 25.67', Found a concrete monument (no cap) with a carsonite marker (G-13 Bath Township, Clinton County)

Signed by

Gilbert M. Barish

Date 13 - Nov - 2004

Surveyor's Michigan License No. 47942

P.A. 345 INGHAM COUNTY
PEER APPROVED 11/02/2004

Part "A" continued - Northeast corner of section 4 (G-01) T4N, R1W, Ingham County, Michigan

- 2) Corner referenced in Ingham County Road Commission Grid Sheet (No date)

Axle Shaft
27" Elm 44.21' N.W.
23" Elm 59.82' N.N.W.
3" Elm 39.73' W

SURVEY &
REMONUMENTATION

- 3) Corner referenced in a recorded survey by Ronnie M. Lester in Liber 1, Page 603-604 of Surveys on 6-Dec-1972. DEC 14 2004

Set 1/2" bar, NE Cor. Sec. 4, T4N, R1W
Witnesses:

Nail and tag in S.W. side triple 6" Willow, E.N.E., 66.42'
Nail and tag in West side 15" wild Cherry, S.E., 50.67'
Nail and tag in West side 10" Oak, South, 45.09'

SECTION

Measured (G01-G02) - 2590.40'

- 4) Land Corner Recordation Certificate by Ronnie M. Lester, P.S. #18998 on 16-Feb-1978 as recorded in Liber 4 page 146 of corners.

Part "A" states: Original monument and accessories obliterated.

Part "B" states: ICRC records call for axle shaft at North end of fence post with following witnesses: 27" Elm, N46°W, 44.21'; 23" elm, N20°W, 59.82'; S.W. corner Section 34, West 25.60' (1" Pipe). Found no axle. Elm trees gone. Set 1/2" bar and cap 25.60' East of found 3/4" pipe. Falls in fence line South.

Part "C" states: 1/2" bar and cap as described above.

Nail and tag in S.W. side triple 6" Willow, E.N.E.
3/4" pipe West, 25.60'
Nail and tag in West side 15" wild Cherry, S.E., 50.67'
Nail and tag in West side 10" Oak, South, 45.09'

- 5) Corner referenced in a recorded survey by Ronnie M. Lester in Liber 3, Page 547-548 of Surveys in Jul-1978.

Found 1/2" bar, NE Cor. Sec. 4, T4N, R1W

Witnesses: Same information as Item 3 above.

- 6) Corner referenced in a recorded survey by Fred N. White, P.S. #12034 in Liber 4, Pages 374 on 07-Aug-1981. Information provided is the same as Item 4 above. Measured (G01-G02) - 2590.40'

- 7) Corner referenced in a recorded survey by Fred N. White, P.S. #12034 in Liber 4, Pages 672-673 on 17-Nov-1982. Information provided is the same as Item 4 above. Measured (G01-G02) - 2590.40'

- 8) Corner referenced in a recorded survey by Fred N. White, P.S. #12034 in Liber 5, Page 8 on 13-Nov-1985. Information provided is the same as Item 4 above. Measured (G01-G02) - 2590.40'

- 9) Corner referenced in a recorded survey by Larry A. Bryan, P.S. #25832 in Liber 6, Pages 142-143 on 12-Jan-1988.

Northeast corner Section 4, T4N, R1W, Liber 4, Page 146.

Found 1/2" bar.

Found nail and tag #25832 West side 6" Box Elder, S20°E, 6.76'

Found nail and tag #25832 North side 6" Box Elder, East, 10.18'

Found nail and tag #25832 Northwest side 4" elm, S45°W, 17.86'

- 10) Corner referenced in an unrecorded survey by Larry A. Bryan, P.S. #25832 in Job Number 92-B-39354 on 30-Oct-1992. Same information as Item 9 above. Measured (G01-G02) - 2590.60'

- 11) Corner referenced in an unrecorded survey by Larry A. Bryan, P.S. #25832 in Job Number 96-B-52484 on 20-Sept-1996. " North 1/4 corner, Section 4, T4N, R1W as recorded in Liber 3, Page 612, (Item 4 above) found 1/2" bar and cap #18989.

Witnesses (brass tags):

Found nail and tag south side of 24" Maple N60°E, 39.50

Found nail and tag south side of 14" Maple N45°E, 41.99

Found nail and tag #39100 (Terry Wiegman) south side of an 8" Elm N30°E, 29.50

Measured 2606.73' from the North 1/4 corner to the Northeast corner of Section 4.

- 12) Corner referenced in an unrecorded survey by Larry A. Bryan, P.S. #25832 in Job Number 96-B-51727 on 11-June-1996.

Northeast Corner Section 4, T4N, R1W, Liber 4, Page 146.

Found 1/2" Iron Bar in fence line South

Found 2" Brass Disk P.S. #34976, West 25.65'

Found nail and tag #39100 South side 24" Maple N60°E 39.49'

Found nail and tag #39100 South side 14" Maple N45°E 41.99'

Found nail and tag #39100 South side 8" Elm N30°E 29.50'

Found nail and tag #39100 West side 24" Walnut S15°E 50.72'

- 13) Corner referenced in an unrecorded survey by Larry A. Bryan, P.S. #25832 in Job Number 96-B-51352 on 25-Apr-1996. Same information as Item 9 above.

- 14) Corner referenced in an unrecorded survey by Larry A. Bryan, P.S. #25832 in Job Number 96-B-51200 on 08-Apr-1996. Same information as Item 9 above. Measured (G01-F01) - 2606.73'

- 15) Corner referenced in an unrecorded survey by Larry A. Bryan, P.S. #25832 in Job Number 96-B-50875 on 28-Feb-1996. Same information as Item 9 above.

- 16) Corner referenced in an unrecorded survey by Larry A. Bryan, in Job Number 97-B-54408 on 11-Aug-1997. Same information as Item 9 above.



2004-072550

Page: 2 of 2

11/30/2004 08:07 A

**SURVEY &
REMONUMENTATION**

DEC 14 2004

LAND CORNER RECORDATION CERTIFICATE
Filing Requirement of Act 74, Mich. P.A. 1970

SECTION

For corners in

Meridian Township

INGHAM
(County)

Located In:

Corner Code #

1. Public Land Survey

T 4N R 1W

G-02

2. Property Controlling
in Section

S T R

3. Miscellaneous
Property in Sec.

S T R

4. Lot No. _____ Recorded Plat _____

5. Private Claims _____

Paula Johnson
INGHAM COUNTY
REGISTER OF DEEDS
OFFICIAL SEAL



L-11 P-281

CRNR 17.00

2004-072551

2004-072551

Page: 1 of 2

11/30/2004 08:07 A

Register of Deeds Stamp & File Number

I, Gilbert M. Barish, in a field survey on June 10, 2004 do hereby state that under requirements of P.A. 74, Michigan P.A. of 1970, the corner points mentioned in lines 1 and 2 above were in conformance with regulations and rules therefore as required in the current manual of survey instructions of the United States Department of the Interior, Bureau of Land Management or by a decree of a Court of Law and/or that the corner points mentioned in lines 3, 4 and 5 above were in conformance with the rules of the Michigan Board of Land Surveyors or by a Decree of a Court of Law; established, re-established, monumented, recovered, found as expressed below:

NOTE: Not more than 2 corners, all in the same town and range, may be recorded on this certificate.

A. Description of original monument and accessories and/or subsequent restoration:

G-02:

- 1) Musgrove Evans set a 1/4 section corner post fw a during the original GLO survey in 1827.
Witnesses: W.O. 24in S35E 16lks
Hick 8 in S24W 30lks
- 2) Ingham County Road Commission Grid Sheet dated January, 1972 calls for:
Axle Shaft
5" Iron Pipe E. 15.0'
14" Poplar E.S.E. 70.14'
16" Oak S. 4.35'
- 3) Corner referenced in a recorded survey by Ronnie M. Lester in Liber 1, Page 603-604 of Surveys on 6-Dec-1972.
Found Axle Shaft, E 1/4 Cor. Sec. 4, T4N, R1W
Witnesses:
Centerline 5" iron post, East, 15.30'
Nail and tag in N.E. side 36" Poplar, S.E., 70.05'
Nail and tag in North side 28" ash, West, 62.40'

B. Description of corner evidence found and/or method applied in restoring or reestablishing corner:

G-02: Found 3" Axle Shaft at the base of a fence anchor post. Accepted the corner as a faithful perpetuation of the original government corner. Soft welded an Ingham County Remonumentation aluminum cap stamped "P.A. 345, PS 47942" to the found axle shaft

Measured: (G2-G1) - 2588.72 (G2-F2) - 2644.64 (G2-G3) - 2634.09

C. Description of monument for corner and accessories established to perpetuate locating the position of the corner:

G-02: Soft welded an aluminum cap stamped "P.A. 345, PS 47942" to the found axle shaft

NAZ 075°, 30.70', Found KEBS (Keyes Engineering Bryan Surveys) nail and tag in the Northwest face of a 12" Oak
NAZ 342°, 24.25', Found KEBS nail and tag in the West face of a 10" Oak
NAZ 295°, 36.45', Found KEBS nail and tag in the South face of an 8" Oak
NAZ 220°, 4.10', Found nail and tag #25832 (Larry Bryan) in the West face of a 40" Oak
NAZ 144°, 78.14', Set nail and tag #47942 (Barish) in the Southwest face of a 30" Cottonwood

P.A. 345 INGHAM COUNTY
PEER APPROVED 11/02/2004 M

Signed by

Gilbert M. Barish

Date 03-Nov-2004

Surveyor's Michigan License No. 47942

FORM APPROVED BY MICHIGAN STATE BOARD OF PROFESSIONAL SURVEYORS, JAN. 28, 1971
REVISED MAY 14, 1975
REVISED JAN., 1983
REVISED OCT., 1995

A	B	C	D	E	F	G	H	I	J	K	L	M
1												
2	6	5										
3												
4	7	8										
5												
6	18	17										
7												
8	19	20										
9												
10	30	29										
11												
12	31	32										
13												



Part "A" continued -- West 1/4 corner of section 4 (G02), T4N, R1W, Ingham County, Michigan

- 4) Land Corner Recordation Certificate by Ronnie M. Lester, P.S. #18998 on 16-Feb-1978 as recorded in Liber 4 page 146 of corners.
Part "A" states: Original monument and accessories obliterated.
Part "B" states: ICRC records call for axle shaft with the following witnesses: 5" Iron pipe, East, 15.0'; 14" Poplar, S.E., 70.14'; 16" Oak, South 4.35'. Found Axle shaft at fence intersection.
Part "C" states: Found 3" gear with 1" shaft
Centerline 5" iron post, East, 15.30'
Nail and tag in N.E. side 36" Poplar, S.E., 70.05'
Nail and tag in North side 28" ash, West, 62.40'
- 5) Corner referenced in the plat of Crestwood Subdivision No. 1, by Sydney Bokavoy, P.S. #19828 on 19-Mar-1976. No information provided on the Corner. Bearing along the East-West 1/4 line of Section 3, T4N, R1W, is recorded as N89°51'15"E
- 6) Corner referenced in the plat of Crestwood Subdivision No. 2, by Marvin F. Fouty, P.S. #18989 on 9-July-1977. No information provided on the Corner. Bearing along the East-West 1/4 line of Section 3, T4N, R1W, is recorded as N89°54'07"E
- 7) Recorded Survey by Marvin F. Fouty, P.S. #18989 dated 11-April-1976 and recorded in Liber 2, Page 727 of Surveys. Measured (F2-G2) -- 2645.14
East 1/4 Cor. Sec. 4, Found Axle Shaft, Liber 1 of Surveys, Page 603. Witnesses the same as Item 3 above.
- 8) Corner referenced in a recorded survey by Marvin F. Fouty, P.S. #18989 on 22-July-1976 in Liber 2, Page 867 of Surveys. East 1/4 Cor. Sec. 4., T4N, R1W, Axle Shaft, Liber 1 Certified Survey maps of Ingham County, Page 603. Measured (F2-G2) -- 2645.14
- 9) Corner referenced in the plat of Crestwood Subdivision No. 3, by James E. Stephens, P.S. #16053 on 14-May-1979. No information provided on the Corner. Bearing along the East-West 1/4 line of Section 3, T4N, R1W, is recorded as N89°54'07"E
- 10) Corner referenced in a recorded survey by Fred N. White, P.S. #12034 in Liber 4, Pages 374 on 07-Aug-1981. Information provided is the same as Item 4 above. Measured (G01-G02) -- 2590.40'
- 11) Corner referenced in a recorded survey by Fred N. White, P.S. #12034 in Liber 4, Pages 672-673 on 17-Nov-1982. Information provided is the same as Item 4 above. Measured (G01-G02) -- 2590.40'
- 12) Corner referenced in the plat of Crestwood Subdivision No. 4, by Maurice Mahieu, P.S. #28414 on 13-June-1985. No information provided on the Corner. Bearing along the East-West 1/4 line of Section 3, T4N, R1W, is recorded as N89°53'22"E
- 13) Corner referenced in a recorded survey by Fred N. White, P.S. #12034 in Liber 5, Page 8 on 13-Nov-1985. Information provided is the same as Item 4 above.
- 14) Corner referenced in the plat of Pina Creek by Maurice Mahieu, P.S. #28414 on 26-Feb-1986. Information provided is the same as Item 4 above. Measured (G02-H02) -- 2642.05'
- 15) Corner referenced in the plat of Crestwood Subdivision No. 5, by Maurice Mahieu, P.S. #28414 on 04-Mar-1986. No information provided on the Corner. Bearing along the East-West 1/4 line of Section 3, T4N, R1W, is recorded as N89°53'22"E
- 16) Corner referenced in a recorded survey by Larry A. Bryan, P.S. #25832 in Liber 6, Pages 142-143 on 12-Jan-1988. East 1/4 corner Section 4, T4N, R1W. Information provided is the same as Item 4 above.
- 17) Unrecorded survey by Bryan Land Surveys, P.C., Larry Bryan, P.S. #25832 J.N. 92-B-39354 on 30-October-1992
East 1/4 Corner 4, T4N, R1W, as recorded in Liber 4, page 146
Found Axle Shaft with gear at North side of fence post in fences East, West, and South.
C/L steel fence post East 15.33'
Set Nail and tag #25832 Northwest side 30" Oak S45°W 4.18'
Set Nail and tag #25832 West side 6" Oak N15°E 22.57'
Set Nail and tag #25832 North side 8" Cherry East 16.41'
Measured (G02-F02) -- 2644.71'
- 18) Unrecorded survey by Bryan Land Surveys, P.C., Larry Bryan, P.S. #25832 J.N. 92-B-39354 on 30-October-1992
Center of Section 4, T4N, R1W, as recorded in Liber 3, Page 431. Witnesses are the same as Item 11 above.
- 19) Unrecorded survey by Bryan Land Surveys, P.C., Larry Bryan, P.S. #25832 J.N. 97-B-54408 on 11-August-1997
East 1/4 Corner 4, T4N, R1W, as recorded in Liber 4, page 146
Found Axle Shaft with gear at North side of fence post in fences East, West, and South.
C/L steel fence post East 15.33'
Found Nail and tag #25832 Northwest side 30" Oak S45°W 4.20'
Found Nail and tag #25832 West side 6" Oak N15°E 22.60'
Found Nail and tag #25832 North side 8" Cherry East 16.41'
Measured (G02-F02) -- 2644.98'



2004-072551

Page: 2 of 2

11/30/2004 08:07 A

SURVEY & MONUMENTATION

DEC 14 2004

SECTION

LAND CORNER RECORDATION CERTIFICATE Filing Requirement of Act 74, Mich. P.A. 1970

For corners in

Meridian Township

INGHAM
(County)

Located In:

Corner Code #

1. Public Land Survey

T 4N

R 1W

G-03

2. Property Controlling
in Section

S

T

R

3. Miscellaneous
Property in Sec.

S

T

R

4. Lot No. _____, Recorded Plat _____

5. Private Claims _____

Paula Johnson
INGHAM COUNTY
REGISTER OF DEEDS
OFFICIAL SEAL



L-11 P-283

CRNR 17.00

2004-072552

2004-072552

Page: 1 of 2

11/30/2004 08:07 A

Register of Deeds Stamp & File Number

I, Gilbert M. Barish, in a field survey on June 10, 2004 do hereby state that under requirements of P.A. 74, Michigan P.A. of 1970, the corner points mentioned in lines 1 and 2 above were in conformance with regulations and rules therefore as required in the current manual of survey instructions of the United States Department of the Interior, Bureau of Land Management or by a decree of a Court of Law and/or that the corner points mentioned in lines 3, 4 and 5 above were in conformance with the rules of the Michigan Board of Land Surveyors or by a Decree of a Court of Law, established, re-established, monumented, recovered, found as expressed below:

NOTE: Not more than 2 corners, all in the same town and range, may be recorded on this certificate.

A. Description of original monument and accessories and/or subsequent restoration:

G-03:

- 1) Musgrove Evans set a 1/4 section corner post to Sec. 3,4,9, and 10 for a during the original GLO survey in 1827.
Witnesses: W.O. 14in S58E 40lks
Do 8 in N79W 35lks
- 2) Ingham County Road Commission Grid Sheet dated January, 1971 calls for:
1/2" Iron
12" Apple N.N.E. 40.23'
P.P. E.S.E. 83.95'
T.P. W.N.W. 68.72'
- 3) Plat of Lake O' The Hills as recorded by Robert J. Jagow, P.S. #6998 on 07-Feb-1967. No further information provided.

Continued on sheet 2

B. Description of corner evidence found and/or method applied in restoring or reestablishing corner:

G-03: Found 1/2" X 24" steel bar (no cap) at the surface of Lake Lansing Road

Field investigation at the apparent location of the corner revealed a 1/2" steel bar at the surface of Lake Lansing Road. Offset the found 1/2" bar and excavated around the point in an 18" diameter to a depth of 24". The asphalt was about 6" deep with a hard pack gravel bed at the base of the asphalt. Did not recover any additional evidence as to the location of the section corner.

Accepted the found 1/2" steel bar as a faithful perpetuation of the corner and set a 3/4" x 24" steel bar and cap stamped "P.A. 345, PS 47942" in a monument box.

Measured: (G3-G2) - 2634.09 (G3-F3) - 2651.70

C. Description of monument for corner and accessories established to perpetuate locating the position of the corner:

G-03: Set 3/4" x 24" steel bar and cap stamped "P.A. 345, PS 47942" in a monument box in the physical centerline of Lake Lansing Road.

NAZ 222°, 41.95', Found nail and tag #17741 (Gerald Gray) in the Southeast face of an 18" Red Pine
NAZ 159°, 37.28', Found nail and tag #17741 (Gerald Gray) in the Southwest face of an 18" Red Pine
NAZ 116°, 84.00', Set Mag nail and tag #47942 (Barish) below a found 16 penny nail in the Northeast face of a utility pole
NAZ 080°, 56.39', Set nail and tag #47942 (Barish) in the Southeast face of a 10" Elm
NAZ 012°, 82.85', Set nail and tag #47942 (Barish) in the West face of a 12" twin Elm

P.A. 345 INGHAM COUNTY
PEER APPROVED 11/02/2004 M.

Signed by

Gilbert M. Barish

Date

03-Nov-2004

Surveyor's Michigan License No.

47942

FORM APPROVED BY MICHIGAN STATE BOARD OF PROFESSIONAL SURVEYORS, JAN. 28, 1971
REVISED MAY 14, 1975
REVISED JAN., 1983
REVISED OCT., 1995

Part "A" continued -- Southeast corner of Section 4 (G03), T4N, R1W, Ingham County, Michigan

- 4) Land Corner Recordation Certificate by Gary D. Lester, P.S. #17624 on 09-Aug-1971 as recorded in Liber 1 page 177 of corners.
Part "A" states: The original monument and accessories obliterated.
Part "B" states: Given witnesses by Ingham County Road Commission. Location supported by fence North and Location is called for in recorded plat of Lake O' The Hills Subdivision.
Part "C" states: Road Under Construction

Witnesses only for setting corners after construction completion.
Spike in 12" Apple, NNE, 40.23'
Spike in Power Pole, ESE, 83.95'
Spike in telephone pole, WNW, 68.72'

SURVEY &
REMONUMENTATION

DEC 14 2004

- 5) Corner referenced in a recorded survey by James E. Stephens in Liber 1, Page 447 of Surveys on 29-Sept-1972 "S.E. corner sec. 4, T4N, R1W, Rec'd L.1, Pg. 177." (Item 4 above). No further information provided.
- 6) Corner referenced in a recorded survey by Marvin F. Fouty in Liber 2, Page 310 of Surveys on 27-Jan-1975. "NE Cor. Sec. 9, T4N, R1W, Fnd 1/2" Bar, Liber 1, Page 177" (Item 4 above)
Witnesses: PK nail in 12" Apple, NNE 40.32
PK nail in Power Pole ESE 83.99
Nail and tag N side utility pole WSW 104.78
- 7) Corner referenced in a recorded survey by Marvin F. Fouty, P.S. #18989 in Liber 2, Page 727 of Surveys on 06-Apr-1976. Found 1/2" bar as recorded in Liber 1, page 177 (item 4 above). Measured (F3-G3) - 2651.98 feet, (G3-G2) - 2634.49'
- 8) Plat of Oak Grove Heights as recorded by Larry A. Bryan, P.S. #25832 on 12-Feb-1985. Corner references Liber 1, Page 177 (Item 4 above).

SECTION



2004-072552
Page: 2 of 2
11/30/2004 08:07 A

LAND CORNER RECORDATION CERTIFICATE
Filing Requirement of Act 74, Mich. P.A. 1970

For corners in

Meridian Township

INGHAM
(County)

Located In:

Corner Code #

1. Public Land Survey

T 4N R 1W H-1

2. Property Controlling
in Section

S T R

3. Miscellaneous
Property in Sec.

S T R

4. Lot No. , Recorded Plat

5. Private Claims

I, Gilbert M. Barish, in a field survey on 13-Mar / 22-Sept, 2007 do hereby state that under requirements of P.A. 74, Michigan P.A. of 1970, the corner points mentioned in lines 1 and 2 above were in conformance with regulations and rules therefore as required in the current manual of survey instructions of the United States Department of the Interior, Bureau of Land Management or by a decree of a Court of Law and/or that the corner points mentioned in lines 3, 4 and 5 above were in conformance with the rules of the Michigan Board of Land Surveyors or by a Decree of a Court of Law; established, re-established, monumented, recovered, found as expressed below:

NOTE: Not more than 2 corners, all in the same town and range, may be recorded on this certificate.

A. Description of original monument and accessories and/or subsequent restoration:

1) Corner not originally established during Musgrove Evans Feb. 1827 Survey

(Continued on Sheet 2)

B. Description of corner evidence found and/or method applied in restoring or reestablishing corner:

A search of the apparent area yielded no visible or magnetic reading information at the corner location. Identified two 5/8" steel bars in monument boxes, one located 6.4 feet north in the Centerline of Marsh Road and the other 11.3 feet to the Northwest of the H-1 Position. The Roadway was reconstructed in 2000+/- and evidence pertaining to the locations of H-1 and H-13, T5N, R1W, were removed at that time.

A search for a pipe and cap as called for in Item 17 above as the remonumented position at H-13, T5N, R1W is now a Mag Nail and Tag in a Concrete Curb Pan. The location of the monumented position of H-13 checks well with record witnesses and distance calls to adjoining section corners.

Accepted the location of H-1 as an obliterated corner and established the position of H-1, T4N, R1W utilizing the distance measurements as recorded in Items 7 and 17 above and placed the corner on the standard line between the positions at H-13 and I-13, T5N, R1W. Excavations yielded no historical information. Recovered no witness of public record.

Set a 3/4" x 24" steel bar and cap stamped "P.A. 345, PS 47942" in a monument box nominally 2 feet East of the Centerline of Marsh Road.

Measurements: (H-1 to I-1) - 2,643.17' (H-1 to H-2) - 2,579.08' (H-1 to H-13, T5N, R1W) - 22.04' (H-1 to G-1) - 2,648.39'

C. Description of monument for corner and accessories established to perpetuate locating the position of the corner:

Set standard Ingham County 3/4" X 24" smooth steel bar and cap stamped "P.A. 345, PS 47942" Nominally 2 feet East of the centerline of Marsh Road in a Monument Box

East, 59.90' Found 1/2" Steel bar in concrete
S36°E, 50.55' Set Nail and Ingham County Witness Tag in Northeast face 15" Black Locust
N28°W, 63.97' Found KEBS Nail and Tag in the Southwest face of a utility pole
West, 23.05' Found a Mag Nail and KEBS tag in the East of a Concrete Curb Pan
N09°W, 6.41' Found 5/8" bar in Monument box in the center of Marsh Road
N56°W, 11.33' Found 5/8" bar in Monument box

Notes:

- 1) Bearings are based on True North and reflect a magnetic declination of 6°20' West
- 2) KEBS stands for Keyes engineering/ Bryan Surveying Inc.
- 3) Set nail and tag is a Magnetic nail and 1-1/2" aluminum tag stamped "INGHAM WITNESS PA 345"

Signed by Gilbert M. Barish

Date 27-NOV-2007

Surveyor's Michigan License No. 47942

B: 13 P: 194 11/29/2007 09:26 AM
2007-050126 LAND CORNERS Receipt #35013
Paula Johnson, Ingham County, Michigan

Pages: 3



Register of Deeds Stamp & File Number

	A	B	C	D	E	F	G	H	I	J	K	L	M
1													
2		6		5		4		3		2		1	
3													
4		7		8		9		10		11		12	
5													
6		18		17		16		15		14		13	
7													
8		19		20		21		22		23		24	
9													
10		30		29		28		27		26		25	
11													
12		31		32		33		34		35		36	
13													

P.A. 345 INGHAM COUNTY

PEER APPROVED 9/25/2007

M



Part "A" continued – H-1, T4N, R1W, Ingham County, Michigan

- 2) **05-December-1908** – Plat of Hickory Grove Addition. References the North-South 1/4 line of Section 3. Does not show or dimension H-1
- 3) **22-August-1928** – Plat of Hickory Grove Park. References the North-South 1/4 line of Section 3. Does not show or dimension H-1
- 4) **01-May-1955** – Michigan Department of Transportation Form 280 by Brewer Engineering references corner with the following witnesses:
SW corner House N50°E, 93.20'
24" Walnut N81°E, 75.50'
18" Walnut N68°W, 46.37'

Measurements: (H1 to G1) 2,648.14 feet (H-1 to H-13) 22.77 feet

- 5) **19-September-1957** – Plat of Logel Subdivision. References the North-South 1/4 line of Section 3. Does not show or dimension H-1
- 6) **1972** – Ingham County Road Commission Grid Sheet.
1" Iron
24" Walnut 75.5 feet ENE
S.W. Corner House 93.2 feet NE
18" Walnut 46.37 feet W.N.W.
Shows a distance of 22.77 feet East to the South 1/4 post of Section 34, T5N, R1W.
- 7) **24-August-1979** Land Corner Recordation Certificate by Ronnie M Lester, P.S. #18998 as recorded in Liber 5, page 372 of corners.

Part "A" states: No post set in original government survey.

Corner identified as 1" iron in the records of Wm. Berryman, Co. Surveyor, date unknown and in the records of the Ingham County Road Commission, revised grid map, 1972.

Corner identified as 1" iron pipe in MDSHT Government Monument witness form 280, by Brewer Engineering, May 1, 1955

Part "B" states: Excavated a hole 5' x 5' to an average depth of 2.3' east of the centerline of Marsh Road and on a tree/fence line east and west. Found 1" x 2.7' iron pipe 6" below road surface embedded in sand on a tree/fence line east and west +/- 9.0' east of the centerline of Marsh Road. Location of pipe is in close accord with witnesses as given in MDSHT Form 280 and records attributed to Wm. Berryman, County Surveyor and the records of the Ingham County Road Commission. Accepted pipe for corner. Excavation conducted by Ingham County Survey and Remonumentation Project crew.

Part "C" states: North 1/4 Corner Section 3, T4N, R1W

Set 4" x 36" concrete monument with 1/2" x 38" rerod and cap #18998 with concrete collar and cover in location of 1" iron pipe described above:

Nail & tag, #18998, north side 8" fence post, West 42.10'

Nail & tag, #18998, north side 24" Butternut, WNW 46.76'

Nail & tag, #18998, south side 24" Locust, NW, 52.42'

Nail & tag, #18998, north side 12" White Pine, ENE 25.06'

Concrete Monument, H-13 Bath Twp., T5N, R1W, Clinton County, West 23.03'

- 8) **24-June-1981** - Corner referenced in a recorded survey by Marvin F. Fouty, P.S. #18989 as recorded in Liber 4 pages 490-491 of Surveys.
North 1/4 Corner section 3, T4N, R1W
Witnesses not shown.

Measurements: (H2 to H1) North – 2,579.26 feet (H1 to I1) S89°40'34"E, 2,643.60 feet

- 9) **28-August-1987** - Corner referenced in a recorded survey by Larry A. Bryan, P.S. #25832 as recorded in Liber 3 pages 983-984 of Surveys, Clinton County Records.
"Found concrete monument in monument box, South (*should be North*) 1/4 corner Section 3, T4N, R1W, East 23.10"

- 10) **12-November-1987** - Corner referenced in a recorded survey by Larry A. Bryan, P.S. #25832 as recorded in Liber 3 pages 802-803 of Surveys, Clinton County Records.
"Found concrete monument in monument box, South (*should be North*) 1/4 corner Section 3, T4N, R1W, East 23.10"

- 11) **06-January-1988** - Corner referenced in a recorded survey by Larry A. Bryan, P.S. #25832 as recorded in Liber 3 pages 740-742 of Surveys, Clinton County Records.
North 1/4 Corner of Section 3, T4N, R1W
Found 1/2" bar in concrete in Monument Box.
Found nail and tag in North Side of 20" Pine, N75°E, 20.04'
Found nail and tag in North Side of fence post, West, 42.20'
Found nail and tag in North Side 22" Butternut, N60°W, 46.80'

Measurements: (H1 to I1) 2,643.26 feet (I13 and I1 called for as common corner)

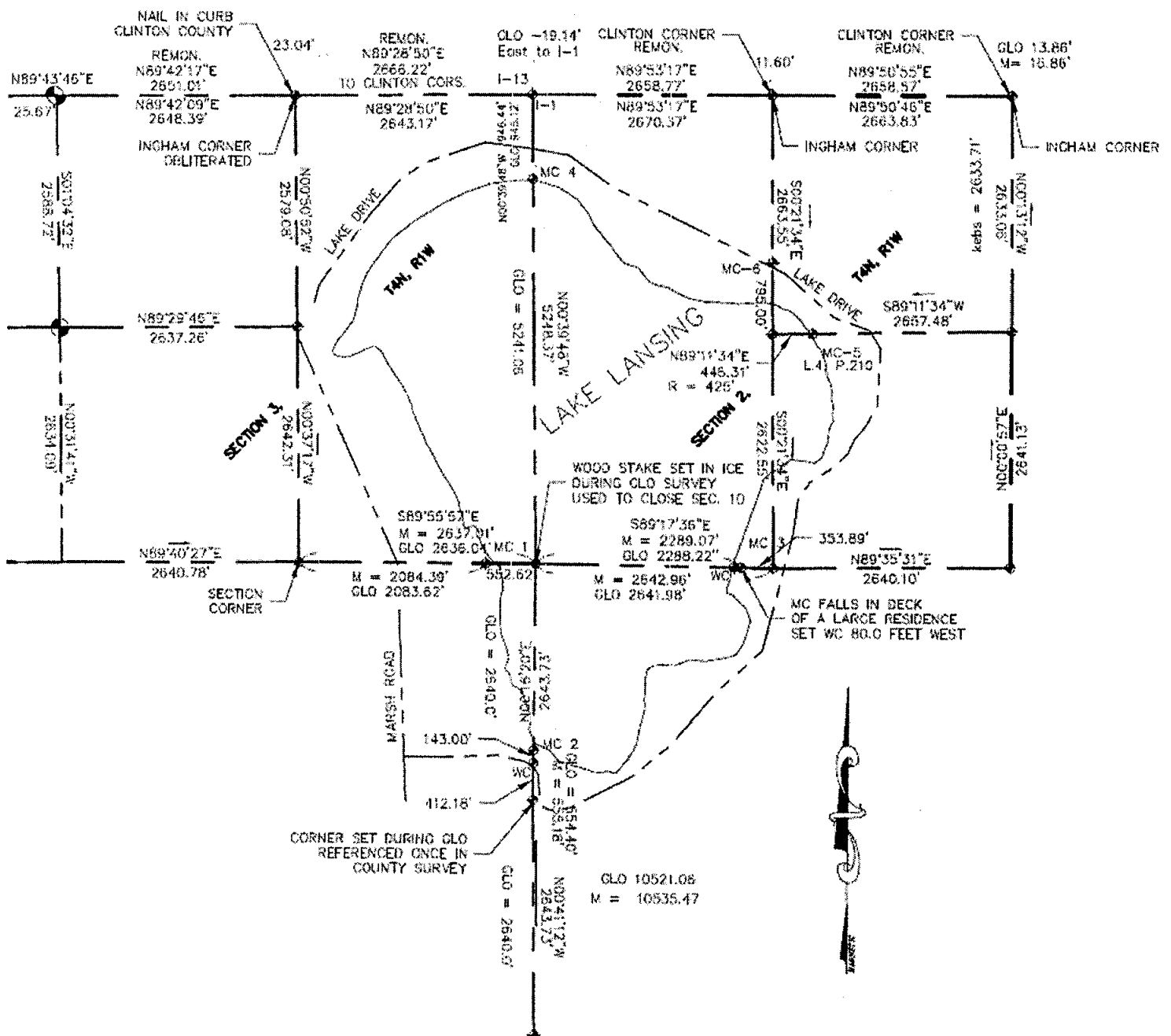
- 12) **20-April-1988** - Corner referenced in a recorded survey by Larry A. Bryan, P.S. #25832 as recorded in Liber 3 pages 712-713 of Surveys, Clinton County Records.
"Found concrete monument in monument box, North 1/4 corner Section 3, T4N, R1W, East 23.10"

- 13) **29-March-1989** - Corner referenced in a recorded survey by Larry A. Bryan, P.S. #25832 as recorded in Liber 3 pages 541-543 of Surveys, Clinton County Records.
"Found concrete monument in monument box, North 1/4 corner Section 3, T4N, R1W, East 23.10"

Part "A" continued - H-1, T4N, R1W, Ingham County, Michigan

- 14) **21-February-1995** - Corner referenced in a recorded survey by Larry A. Bryan, P.S. #25832 as recorded in Liber 5 pages 52-54 of Surveys, Clinton County Records.
"Found concrete monument in monument box, South (should be North) ¼ corner Section 3, T4N, R1W, East 23.10"
- 15) **31-October-1996** - Corner referenced in a recorded survey by Larry A. Bryan, P.S. #25832
"Found concrete monument in monument box, North ¼ corner Section 3, T4N, R1W, East 23.10"
- 16) **05-September-1997** - Corner referenced in a recorded survey by Larry A. Bryan, P.S. #25832 as recorded in Liber 790 pages 548 of Surveys, Clinton County Records.
"Found concrete monument in monument box, North ¼ corner Section 3, T4N, R1W, East 23.10"
- 17) **21-December-1999** - Land Corner Recordation Certificate by Arden S. Pierson, P.S. #13039 as recorded in Liber 004 page 331 of Corners, Clinton County Records.
Part C States:
"Ingham County Corner - East - 23.05 feet"

Measurements: (H-13 to G-13) S89°43'46"W, 2,651.10 feet (H-13 to I-13) N89°30'40"E, 2,666.26 feet



Section Model Sketch, Sections 2,3,10, and 11, Meridian Township, Ingham Co., MI

LAND CORNER RECORDATION CERTIFICATE
Filing Requirement of Act 74, Mich. P.A. 1970

For corners in

Meridian Township

Ingham
(County)

Located In:

Corner Code #

1. Public Land Survey

T 4N R 1W H-2

T R

T R

T R

B: 13 P: 195 11/29/2007 09:26 AM
2007-050127 LAND CORNERS Receipt #35013
Paula Johnson, Ingham County, Michigan

Pages: 3



2. Property Controlling
in Section

S

T R

3. Miscellaneous
Property in Sec.

S

T R

S

T R

S

T R



Register of Deeds Stamp & File Number

4. Lot No. _____, Recorded Plat _____

5. Private Claims _____

I, Gilbert M. Barish, in a field survey on 23- Mar / 22-Sept, 2007 do hereby state that under requirements of P.A. 74, Michigan P.A. of 1970, the corner points mentioned in lines 1 and 2 above were in conformance with regulations and rules therefore as required in the current manual of survey instructions of the United States Department of the Interior, Bureau of Land Management or by a decree of a Court of Law and/or that the corner points mentioned in lines 3, 4 and 5 above were in conformance with the rules of the Michigan Board of Land Surveyors or by a Decree of a Court of Law; established, re-established, monumented, recovered, found as expressed below:

NOTE: Not more than 2 corners, all in the same town and range, may be recorded on this certificate.

A. Description of original monument and accessories and/or subsequent restoration:

- 1) Corner not originally established during Musgrove Evans Feb. 1827 Survey
- 2) 05-December-1908 – Plat of Hickory Grove Addition. References the North-South 1/4 line of Section 3. Calls for H-2 as the point of beginning.

(Continued on Sheet 2)

B. Description of corner evidence found and/or method applied in restoring or reestablishing corner:

Found a 3/4" x 12" square bolt in asphalt in the center lane of the southbound traffic during original visit in March 2007 per item 8 above. On 22-Sept-2007, the corner was obliterated during the reconstruction of Marsh Road. Found remnants of the Square Bolt as referenced in Item 8 above, and re-established the position based on previous measurements and witnesses contained in Item 8 above.

There is significant historical documentation supporting the location of H-2. I found no county surveyor records establishing the corner. The earliest recorded entry is in 1908 where the center is referenced in the Plat of Hickory Grove as shown in Item 2 above.

Utilizing a calculated position for I-2 (located in Lake Lansing), the monumented position of H-2 falls 25.9 feet North and 5.2 feet East of the Mathematical intersection of right lines between adjacent section corners.

Accepted the location of the found Square bolt based on the historical utilization of the corner as a perpetuation of the position of H-2 as referenced in Item 2 above.

Set a 3/4" x 24" steel bar and cap stamped "P.A. 345, PS 47942" in the gravel road base. Contacted the Ingham County Road Commission and was provided confirmation that a monument box would be placed around the corner prior to placing a new concrete road surface.

Measurements: (H-2 to H-1) – 2,579.08' (H-2 to G-2) – 2,644.64' (H-2 to H-3) – 2642.31' (H-2 to I-2 calculated) – 2,629.60'

C. Description of monument for corner and accessories established to perpetuate locating the position of the corner:

Set standard Ingham County 3/4" X 24" smooth steel bar and cap stamped "P.A. 345, PS 47942" in the gravel road bed on Marsh Road

N09°W, 94.27' Set Nail and Ingham County Witness Tag in the East face of a 36" Oak
N73°W, 21.69' Found KEBS nail and tag in the top of a wood retaining wall
S10°W, 101.28' Found Nail and Tag #18998 in the East face of a utility pole
N60°E, 69.47' Found Nail and Tag #18998 in the Northwest face of a 14" Shagbark Hickory

Notes:

- 1) Bearings are based on True North and reflect a magnetic declination of 6°20' West
- 2) KEBS stands for Keyes engineering/ Bryan Surveying Inc.
- 3) Set nail and tag is a Magnetic nail and 1-1/2" aluminum tag stamped "INGHAM WITNESS PA 345"

Signed by Gilbert M. Barish

Date 27-NOV-2007

Surveyor's Michigan License No. 47942



	A	B	C	D	E	F	G	H	I	J	K	L	M
1													
2	6		5		4			3		2		1	
3													
4	7		8		9			10		11		12	
5													
6	18		17		16			15		14		13	
7													
8	19		20		21			22		23		24	
9													
10	30		29		28			27		26		25	
11													
12	31		32		33			34		35		36	
13													

P.A. 345 INGHAM COUNTY
PEER APPROVED 9/25/2007

R

Part "A" continued – H-2, T4N, R1W, Ingham County, Michigan

- 3) **10-June-1927** – Supervisor's Plat No. 4, Meridian Township. Calls for H-2 as a point of beginning. No section line calls shown.
- 4) **22-August-1928** – Plat of Hickory Grove Park. References the North-South 1/4 line of Section 3. Calls for H-2 as a point of beginning.
- 5) **28-July-1930** – Plat of Lakebrook No. 1. Calls for H-2 as a point of beginning. No section line calls shown.
- 6) **07-May-1957** – Logel Subdivision. Calls for H-2 as a point of beginning.
- 7) **09-July-1973** – Corner referenced in a recorded survey by Laverne J. Hendryx, P.S. #3276 as recorded in Liber 1 page 843 of Surveys.
Written legal description calls for the Center of Section 3 as the point of commencement. No ties to section lines shown.
- 8) **20-May-1981** Land Corner Recordation Certificate by Ronnie M Lester, P.S. #18998 as recorded in Liber 6, page 194 of corners.

Part "A" states: No record of monumentation being set in original government survey
Corner referred to in Recorded Subdivision Plat of Hickory Grove Addition, recorded December 5, 1908 (L.4, P. 10).
Corner referred to in Recorded Subdivision Plat of Hickory Grove Park, August 11, 1925 (L.5 p.2)
Corner referred to in Recorded Supervisor's Plat #4, June 9, 1927 (L.9, p.40)
Corner referred to in Recorded plat of Lakebrook #1, July 28, 1930, (L.6 p.60)
Corner referred to in Rec. Subd. Plat of Logel Subd., September 24, 1957 (L.24, p.14)

Part "B" states: Found 3/4" square bar at this corner. It appears that this location has been used for all adjacent plats. Accepted this location as perpetuated center of Section. Measured South 2642.14', West 2637.04', North 2579.20'

Part "C" states: Center, Section 3, T4N, R1W
Left 3/4" square bar at location described above:
Nail & tag, #18998, North side 6" pine, N50°W, 22.85'
Nail & tag, #18998, East side power pole, S10°W, 101.26'
Nail & tag, #18998, Southwest side 20" Oak, S30°E, 96.20'
Nail & tag, #18998, Northwest side 8" Oak, N60°E, 69.39'

- 9) **24-June-1981** – Corner referenced in a recorded survey by Marvin F. Fouty, P.S. #18989 as recorded in Liber 4 pages 490-491 of Surveys.
Center of section 3, T4N, R1W
Nail and Tag 18998 in:
N. Side 6" Pine N50°W, 22.85'
E. Side PP S10°W, 101.26'
SW Side 20" Oak S30°E, 96.20'
NW Side 8" Oak, N60°E, 69.39'

Measurements: (H2 to H1) North – 2,579.26 feet

- 10) **02-December-1985** – Plat of Oak Grove Heights. Calls for H-2 as recorded in (L. 6, page 194)

Measurements: (H2 to H3) S00°26'21"E – 2,604.39 feet

- 11) **26-February-1986** – Plat of Pine Creek. Calls for H-2 as recorded in (L. 6, page 194)

Measurements: (H2 to G2) S90°00'00"W – 2,642.05 feet

- 12) **02-April-1986** – Plat of Crestwood Subdivision No. 5. Calls for H-2 as recorded in (L. 6, page 194)

Measurements: (H2 to G2) S89°53'22"W – 2,636.85 feet

- 13) **05-October-1988** – Corner referenced in a recorded survey by Larry A. Bryan, P.S. #25832 as recorded in Liber 6 pages 46 of Surveys, Ingham County Records.
Center of Section 3, T4N, R1W, L. 6, Page 194
Found 3/4" square bar.
Found nail and tag #18998 in North Side of 6" Pine, N50°W, 22.85'
Found nail and tag #18998 in East Side of power pole, S10°W, 101.26'
Found nail and tag Southwest side 20" Oak, S30°E, 96.22'

- 14) **08-November-1995** – Corner referenced in a recorded survey by Terry L. Weigman, P.S. #39100 as recorded in Liber 7 pages 679-680 of Surveys, Ingham County Records.
"Center of Section 3, T4N, R1W, (L. 6, page 194)"
No references to section lines. Survey is for lots recorded in Supervisor's Plat No. 4.

The map displays the following survey data and features:

- Boundaries and Bearings:**
 - Top boundary: N89°43'46"E 25.67' to Nail in Curb, Clinton County; N89°42'17"E 2651.01' to Remon; N89°42'09"E 2648.39' to Ingham Corner (Obliterated); N89°29'46"E 2637.26' to Section 3 corner; N89°40'27"E 2640.78' to Section corner.
 - Right boundary: GLO -19.14' East to I-1; N89°53'17"E 2658.77' to Clinton Corner Remon; N89°50'55"E 2656.57' to Clinton Corner Remon; N89°50'46"E 2663.83' to Ingham Corner; N89°11'34"E 2667.46' to MC-5 L4 P.210; N89°35'31"E 2640.10' to MC 3.
 - Bottom boundary: N89°55'53"E M = 2637.01' GLO 2636.01' MC 1; S89°17'36"E M = 2289.07' GLO 2288.22" MC 3; N89°41'27"W 2643.73' to MC 2; GLO 10521.06 M = 10535.47.
 - Left boundary: N89°42'17"E 2651.01' to Nail in Curb, Clinton County; N89°29'46"E 2637.26' to Section 3 corner; N89°40'27"E 2640.78' to Section corner.
- Internal Features and Distances:**
 - Lake Lansing Road (MC 4) stationing: GLO -19.14' East to I-1; 21.948' S 89°42'09"E; 2579.08' N 00°50'52"W; 2642.31' N 00°37'17"W; 2640.0' GLO 2640.0' MC 2; 143.00' 412.15' to Marsh Road.
 - Marsh Road: 143.00' 412.15' to Marsh Road.
 - Wood Stake Set in Ice during GLO Survey used to close Sec. 10: S89°17'36"E M = 2289.07' GLO 2288.22" MC 3; 353.89' to MC 3.
 - MC Falls in Deck of a Large Residence set WC 80.0 Feet West: 80.0' to MC 3.
 - Section 2: S89°21'34"E 2653.55' to MC 4; 2622.55' S 02°21'41"E to MC 3.
 - Section 3: N00°37'17"W 2642.31' to Section 3 corner.
- Other Labels:**
 - REMON.
 - CLINTON CORNER
 - INGHAM CORNER
 - LAKE DRIVE
 - TAN. RTW
 - LAKE LANSING
 - SECTION 2
 - SECTION 3
 - SECTION CORNER
 - MARSH ROAD
 - CORNER SET DURING GLO REFERENCED ONCE IN COUNTY SURVEY
 - WOOD STAKE SET IN ICE DURING GLO SURVEY USED TO CLOSE SEC. 10
 - MC FALLS IN DECK OF A LARGE RESIDENCE SET WC 80.0 FEET WEST

P.A. 345 INGHAM COUNTY
PEER APPROVED: 9/25/2007

u

LAND CORNER RECORDATION CERTIFICATE
Filing Requirement of Act 74, Mich. P.A. 1970

For corners in

Meridian Township

MERIDIAN
(County)

Located In:

Corner Code #

1. Public Land Survey

T 4N R 1W H-3

T R

T R

T R

B: 13 P: 197 11/29/2007 09:26 AM

Pages: 2

2007-050129 LAND CORNERS Receipt #35013

Paula Johnson, Ingham County, Michigan

2. Property Controlling
in Section

S T R

3. Miscellaneous
Property in Sec.

S T R

S T R

4. Lot No. , Recorded Plat

5. Private Claims

I, Gilbert M. Barish, in a field survey on 25-Sept, 2007 do hereby state that under requirements of P.A. 74, Michigan P.A. of 1970, the corner points mentioned in lines 1 and 2 above were in conformance with regulations and rules therefore as required in the current manual of survey instructions of the United States Department of the Interior, Bureau of Land Management or by a decree of a Court of Law and/or that the corner points mentioned in lines 3, 4 and 5 above were in conformance with the rules of the Michigan Board of Land Surveyors or by a Decree of a Court of Law; established, re-established, monumented, recovered, found as expressed below:

NOTE: Not more than 2 corners, all in the same town and range, may be recorded on this certificate.

A. Description of original monument and accessories and/or subsequent restoration:

1) 02-February-1827 - Corner set by Deputy Surveyor Musgrove Evans

"Set 1/4 Sec. post at ow. Dist. On true line

Elm 2in. S55E, 4 links

Aspen 6" N68W, 117 links"

Corner is 39.93 chains (2,635.38 feet) from G-3 and 39.94 chains (2,636.04 feet) from I-3

(Continued on Sheet 2)

B. Description of corner evidence found and/or method applied in restoring or reestablishing corner:

Found a 1/2" steel bar and cap (illegible) at the apparent location of H-3. The position is bounded by fence posts anchored in concrete to the North and Southeast. The corner is referenced in the plat of Oak Grove Heights as referenced in Item 3 above. There is an old downed fence line extending West from this location. New wood fence extends North and East and a Chain link fence extends Southwest from this location.

Located the adjoining lot corners North, West, and East of this location. The distances show that the found corner was out of position by 0.61 feet to the West and 0.08 feet to the North. The true location falls within a concrete fence post foundation.

Removed a portion of the foundation and placed the corner at the proper location according to the ties to the three adjoining lot corners. Accepted the location based on the information contained in Item 3 above as the best evidence of the corner location. Placed a 3/4" X 24" smooth steel bar and Aluminum Ingham County Cap stamped "P.A. 345, P.S. 47942" along the West edge of a concrete fence post foundation.

Measurements: (H-3 to G-3) - 2,640.78' (H-3 to H-2) - 2642.31' (H-3 to I-3) - 2,637.01'

C. Description of monument for corner and accessories established to perpetuate locating the position of the corner:

Set standard Ingham County 3/4" X 24" smooth steel bar and cap stamped "P.A. 345, PS 47942" 0.50 feet South of a fence and 0.35 feet Northwest of a fence.

West, 40.00' Found a 1/2" Steel bar
North, 71.97' Found a 1/2" Steel bar and cap (illegible)
East, 100.00' Found a 1/2" Steel bar in Concrete
S80°E, 41.88' Northwest corner of building foundation House #5997
N83°W, 17.83' Set Ingham County Nail and Tag in the North face of a Twin 15" Hickory

Notes:

- 1) Bearings are based on True North and reflect a magnetic declination of 6°20' West
- 2) KEBS stands for Keyes engineering/ Bryan Surveying Inc.
- 3) Set nail and tag is a Magnetic nail and 1-1/2" aluminum tag stamped "INGHAM WITNESS PA 345"

Signed by Gilbert M. Barish

Date 27-NOV-2007

Surveyor's Michigan License No. 47942

Register of Deeds Stamp & File Number

	A	B	C	D	E	F	G	H	I	J	K	L	M
1													
2	6	5	4	3	2	1							
3													
4	7	8	9	10	11	12							
5													
6	18	17	16	15	14	13							
7													
8	19	20	21	22	23	24							
9													
10	30	29	28	27	26	25							
11													
12	31	32	33	34	35	36							
13													

P.A. 345 INGHAM COUNTY
PEER APPROVED 9/25/2007



Part "A" continued – H-3, T4N, R1W, Ingham County, Michigan

- 2) **23-July-1906** Plat of Oak Grove Park, by Herman Kramer. references the North 1/4 corner of Section 10, T4N, R1W.
- 3) **21-August-1963** Plat of Hillbrook Park No. 2, Clyde Stephens, P.S. references the North 1/4 corner of Section 10, T4N, R1W. Shows a call to H-3 but does not call for corner material
- 4) **10-February-1971** - Corner referenced in an unrecorded survey by Gary D. Lester, P.S. #17624
South 1/4 Corner of section 3, T4N, R1W,
No reference for corner type or witnesses. No distances provided to opposing section corners.
- 5) **26-June-1972** Land Corner Recordation Certificate by Clyde K. Stephens, P.S. #3829 as recorded in Liber 1, page 583 of corners.

Part "A" states: The original monument was not found

Part "B" states: A 3/4 inch iron pipe was set at the intersection of three old fences from the control found in the Plat of Oak Grove Park.

Part "C" states: The 3/4 inch iron pipe set at the N 1/4 corner was witnessed with the following:

Survey tag nailed to the northerly trunk of a twin Hickory, N74°39'W, 17.35 feet

Northwest corner of a 1 story frame house #6001 Greenman St., S66°39'E, 58.15 feet

Survey tag in the west side of a 36 inch Oak, S01°18'E, 14.89 feet

The bearing of the section line east of the corner is S88°32'15"E

- 6) **10-May-1976** - Corner referenced in a recorded survey by Fred N. White, P.S. #12034 as recorded in Liber 2 pages 779-781 of Surveys, Ingham County Records.
South 1/4, T4N, R1W, L. 1, Page 583
Witnesses not shown.
- 7) **12-July-1974** - Corner referenced in a recorded survey by Ronnie M. Lester, P.S. #18998 as recorded in Liber 2 pages 18-19 of Surveys, Ingham County Records.
North 1/4 Corner of section 10, T4N, R1W,
Northerly trunk twin 12" hickory, Nk04°03'W, 17.35'
NW corner of building #6001, S65°21'E, 58.15'
West side 36" oak, South, 14.89'

Measurements: (H-3 to H-4) S00°34'43"E – 2,665.41 feet

- 8) **16-February-1978** Land Corner Recordation Certificate by Ronnie M Lester, P.S. #18998 as recorded in Liber 4, page 145 of corners.

Part "A" states: H-3 Original Monument and accessories obliterated

Part "B" states: H-3 Found 3/4" iron pipe as established by Stephens Engineering in January 1972

Part "C" states: H-3 North 1/4 Corner Section 10

N.W. Corner House, S.E., 58.15' (*House no longer exists*)

Northerly trunk twin 12" Hickory, 17.35'

West side 36" Oak, South, 14.89'

- 9) **05-September-1978** – Corner referenced in a recorded survey by Ronnie M. Lester, P.S. #18998 as recorded in Liber 3 pages 524-525 of Surveys, Ingham County Records.
North 1/4 Corner of section 10, T4N, R1W,
Northerly trunk twin 12" hickory, Nk04°03'W, 17.35'
NW corner of building #6001, S65°21'E, 58.15'
West side 36" oak, South, 14.89'

Measurements: (H-3 to H-4) S00°34'43"E – 2,665.41 feet

- 10) **02-December-1985** – Plat of Oak Grove Heights by Larry Bryan, P.S. #25832. Calls for H-3 as recorded in (L. 4, page 145)

Measurements: (H-3 to H-2) N00°26'21"W – 2,604.39 feet (H-3 to G-3) S89°57'04"W – 2,640.43 feet

(H-3 to H-4) S01°05'24"E – 2,692.41 feet

NOTE: Distances shown on Plat do not correspond to observed measurements and comparison with other surveys of record.

- 9) **05-November-1990** – Corner referenced in a recorded survey by Larry A. Bryan, P.S. #25832 as recorded in Liber 6 pages 460-461 of Surveys, Ingham County Records.
North 1/4 Corner of section 10, T4N, R1W.
Found 3/4" pipe on East-West possession line, Liber 1, Page 583
Found nail & tag west Side 36" Oak, South, 15.08'
Northwest corner of building #1605, N65°E, 58.00'
Found nail & tag Stephens North side 12" Twin Hickory, West, 17.21'

Measurements: (H-3 to G-3) recorded N89°44'21"E – 2,640.42 feet

- 11) **28-April-2005** - Corner referenced in an ALTA/ACSM survey by Maurice H. Mahieu, P.S. #28414 (unrecorded)
South 1/4 Corner of section 3, T4N, R1W,
Witnesses and corner material not shown.

Measurements: (H-3 to G-3) S89°57'45"W – 2,640.18 feet

LAND CORNER RECORDATION CERTIFICATE
Filing Requirement of Act 74, Mich. P.A. 1970

For corners in

Meridian Township

INGHAM
(County)

Located In:

Corner Code #

1. Public Land Survey

T 4N R 1W I-1

2. Property Controlling
in Section

S T R

3. Miscellaneous
Property in Sec.

S T R

4. Lot No. _____, Recorded Plat _____

5. Private Claims _____

I, Gilbert M. Barish, in a field survey on 19 October, 2007 do hereby state that under requirements of P.A. 74, Michigan P.A. of 1970, the corner points mentioned in lines 1 and 2 above were in conformance with regulations and rules therefore as required in the current manual of survey instructions of the United States Department of the Interior, Bureau of Land Management or by a decree of a Court of Law and/or that the corner points mentioned in lines 3, 4 and 5 above were in conformance with the rules of the Michigan Board of Land Surveyors or by a Decree of a Court of Law; established, re-established, monumented, recovered, found as expressed below:

NOTE: Not more than 2 corners, all in the same town and range, may be recorded on this certificate.

A. Description of original monument and accessories and/or subsequent restoration:

- 1) **02-February-1827** – Corner set by Deputy Surveyor Musgrove Evans
"Intersected the North Boundary 29 links (19.14 feet) East of Post Corner Sec. 34 and 35, T5N, R1W, and set a post cor. to sect. 2 and 3
fw a W.O 18in. S11W 36 lks, B.O. 20 S72E, 49 lks"

Continued on Sheet 2

B. Description of corner evidence found and/or method applied in restoring or reestablishing corner:

Searched apparent location and found a 2-1/2" Pipe and Cap #13039 PA 345 monument for Clinton County in a monument box 8 inches below the surface of a gravel road. Measured 18.95 feet West and found a 1/2" Steel bar and cap #25832 (Larry Bryan) at the apparent location of I-13, T5N, R1W (GLO dimension of 19.14 feet). There was no corner certificate for the corner located 18.95 feet west of this location. Excavated an area 4 feet East and West by 4 feet North and South around the found 1/2" steel and bar and cap yielded no additional evidence. The area appears to be in natural grade for the area.

Retraced the monumentation of the plats of O.M. Randall Subdivision (Item 5 above) and Perry Road Addition (Item 5 above). The recovered monumentation in Both Plats point to the corner location monumented by the found 2-1/2" pipe. Recovered domed steel monument as called for as a point of beginning for Item 5 above at the intersection of Perry Road and Lake Drive. The position of which matched the right of way dimensions for Perry Road based on the Plat of O.M. Randall Subdivision. A line projecting northerly constructed by holding the monument at the road intersection and parallel to the Right of Way established by the Plat of O.M. Randall Sub intersected the township line to the North a distance of 0.2 feet East of the found 2-1/2" pipe and cap.

Measurements along the North line of Section 3 from I-1 to H-1 to G-1 and from Section 2 from I-1 to J-1 to K-1 indicated that there was a possible search area 5 feet to the East of the found 2-1/2" pipe and cap. Excavated an area 1.5 feet x 1.5 feet to a depth of 1 foot centered at a distance of 5 feet East of the found pipe and recovered no additional information. The location was in a cut section of roadway and covered by 3 inches of gravel with the remaining material being heavy clay.

Accepted the location of the Found 2-1/2" Pipe and Cap #13039 as the best available evidence of the corner location of I-1 based on the recovery of monumentation in the above said plats; measurements to the adjoining section corners East and West of this location, recovery of the 1/2" steel bar and cap to the West measuring close to the GLO record dimension, and the LCRC recorded in item 7 above. I left the found 2-1/2" pipe and monument box in place in the gravel roadway.

Measurements: (I-1 to H-1) – 2,643.17' (I-1 to J-1) – 2,670.37' (I-1 to I-5) – 10,535.47'

C. Description of monument for corner and accessories established to perpetuate locating the position of the corner:

Found 2-1/2" Pipe and Cap #13039, P.A.345 Clinton County in a Monument Box 8" below the gravel surface near the centerline of Perry Road along a fence line to the West.

N15°E, 67.57 feet – Found Nail and Tag #25832 in the West face of a 24" Cottonwood

S77°E, 33.66 feet – Found Nail and Tag #25832 in the South face of a Utility Pole

S85°E, 36.72 feet – West face of a 2" steel post

S56°E, 19.28 feet – West face of a 2" steel post

S22°W, 60.65 feet – Found Nail and Tag #25832 in the East face of a 24" Walnut

N27°W, 41.66 feet – Found Nail and Tag #13039 in the East face of a 24" Walnut

West, 18.95 feet – Found 1/2" steel bar and cap #25832

Signed by Gilbert M. Barish

Date 27-NOV-2007

Surveyor's Michigan License No. 47942

B: 13 P: 196 11/29/2007 09:26 AM
2007-050128 LAND CORNERS Receipt #35013,35019
Paula Johnson, Ingham County, Michigan

Pages: 4



Register of Deeds Stamp & File Number

	A	B	C	D	E	F	G	H	I	J	K	L	M
1													
2	6		5		4		3		2		1		
3													
4	7		8		9		10		11		12		
5													
6	18		17		16		15		14		13		
7													
8	19		20		21		22		23		24		
9													
10	30		29		28		27		26		25		
11													
12	31		32		33		34		35		36		
13													

P.A. 345 INGHAM COUNTY
PEER APPROVED 10/23/2007
fu



Part "A" continued -- I-1, T4N, R1W, Ingham County, Michigan

- 2) **16-May-1896** – Corner referenced by Surveyor H.D. Bartholomew in the recorded plat of "Dulce Domum Park". Described as "Commencing on the West line of Section 2, T. 4N, R.1W, 780 feet south of the Section Corner; running thence south on said line 165 feet to pine lake..." (GLO Distance from the Northwest Corner Section 2 to Meander Corner is 945.12 feet)
- 3) **28-June-1919** – Corner referenced by Surveyor A.N. Bateman in the recorded plat of "Supervisor's Plat No. 1 of Meridian Township, Ingham Co. MI. Described as "Commencing in the center of the sec. line road between sec's 2 and 3 Meridian Twp. at a point 794 feet south of the North Section line..."
- 4) **1936** – Corner referenced in the Ingham County Road Commission Grid Sheet as follows:
 Iron, Stone, brick
 5" Oak N.E. 31.3'
 22" Walnut N.W. 42.0'
 3" Walnut S.W. 61.6'
- 5) **11-June-1940** – Corner referenced by Lee J. Rothgery, RLS in the recorded plat of "O.M. Randall Subdivision". Described as "Beginning at a point 248.7 feet South and 33 feet West of the Northeast Corner of Section 3, T4N, R1W..."
- 6) **04-November-1948** – Corner referenced by Wm. C Berryman, RLS in the recorded plat of "Plat of Perry Road Addition". Described as "Beginning at a point 794 feet South and 33 feet North 89° 29' East of the Northwest corner of Section 2, Township 4 North, Range 1 West..."
- 7) **13-June-1978** Land Corner Recordation Certificate by George M. Young, P.S. #17640 as recorded in Liber 4, page 210 of corners.

 Part "A" states: I-1: Lost
 Part "B" states: I-1: Found a 1 ½" Iron Pipe on Line and Correct Distance from the P.O.B. of "Plat of Perry Road Addition", Liber 14, Page 32, Ingham County Register of Deeds.
 Part "C" states: I-1: #16 Nail in 20" Oak N 01° E 5.84'
 #16 Nail in 18" Oak N 45° E 8.56'
 Set 1/2" Rerod with cap
- 8) **20-June-1978** Corner referenced in a recorded survey by George M. Young, P.S. #17640 as recorded in Liber 3 page 371 of Surveys.
 NW Corner Section 2, T4N, R1W,
 Found 1 ½" pipe
 15" Oak, N28°W, 41.67' MDSH Tag
 20" Oak, N75°E, 31.44' FNW Tag
 12" Maple, S20°E, 60.89' MDSH Tag
 References North line of Section 2.
- 9) **27-May-1980** Corner referenced in a recorded survey by Fred N. White, P.S. #12034 as recorded in Liber 4 page 31 of Surveys.
 NE Corner Section 3, T4N, R1W,
 Found iron bar
 N50°W, 36.71' N&T Power Pole
 East, 16.44' N&T Power Pole
 S70°E, 52.25' N&T 20" Oak
 South 15.21' N.rim Manhole
 References the centerline of Perry Road and the East line of Section 3
- 10) **24-June-1981** Corner referenced in a recorded survey by Marvin F. Fouty, P.S. #18989 as recorded in Liber 4 page 490 of Surveys.
 NE Corner Section 3, T4N, R1W,
 20" Walnut N28°W, 41.67'
 MDSH Tag 14" Butternut S20°E, 60.89'
 MDSH Tag 12" Walnut S20°W, 60.75'
- 11) **30-December-1982** – Corner referenced by Fred N. White, RLS #12034 as referenced in the Ingham County Condominium Subdivision Plan No. 53 of "The Waters". Survey plan references the Northeast Corner of Section 3 per L. 4, Page 210, Ingham County Records. Calls for the East line of Section 3.
- 12) **01-July-1986** – Corner referenced by Marvin F. Fouty, RLS #18989 as referenced in the Ingham County Condominium Subdivision Plan No. 68 of "North Shore Condominiums". Survey plan references the Northeast Corner of Section 3.
- 13) **12-July-1999** – CLINTON CO. RECORDS - Corner referenced by Larry A. Bryan, PS #25832 as referenced in the Clinton County Condominium Subdivision Plan No. 13 and Ingham County Condominium Subdivision Plan No. 144 "Meadow Brook Condominiums". Survey plan references the Southeast Corner of Section 35, T.5N, R.1W per L. 1, Page 611 (SEE BELOW), Clinton County Records.
- 14) **31-January-2002** – Corner referenced by Jeff K. Autenrieth, PS #31588 as referenced in the Ingham County Condominium Subdivision Plan No. 162 "Replat No. 1 Northport Condominiums". Survey plan references the Northeast Corner of Section 3, T.4N, R.1W per L. 4, Page 210, Ingham County Records.
- 15) **22-April-2004** Corner referenced in a recorded survey by Anthony Bumstead, P.S. #41095 as recorded in Liber 9 page 55 of Surveys.
 NW Corner Section 2, T4N, R1W, Liber 4, Page 210
 Found 1 ½" pipe on centerline Perry Road extended
 Found M.D.S.H. nail and tag in East side 24" Walnut N30°W, 41.59'
 Found nail and tag #25832 in South side utility pole, East 33.68'
 Found nail and tag #25832 in East side 12" Walnut, S20°W, 60.61 feet.
 Found 1/2" bar, Southwest corner Section 35, T5N, R1W, West, 18.98 feet

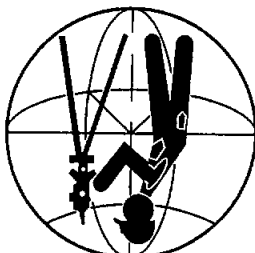
PART "A" CONTINUED I-1, T4N, R1W, ING. CO. MI

Part "A" continued – I-13, T5N, R1W, Clinton County, Michigan as recorded in a P.A. 345 Corner Recordation Certificate by Arden S. Pierson in Liber 004 Page 334, Clinton County Records 11-August-1999

- 16 LCRC Liber 001, Pages 611, Dated 1/4/73 by Ron Helsel, P.S. 18894
Found 1-1/2" pipe to surface of gravel, 6' west of physical centerline, on line with fences East and West.
15" Oak – N28°W – 41.67' MDSH Tag
20" Oak – N75°E – 31.44' FNW Tag
12" Maple – S20°E – 60.89' MDSH Tag
12" Walnut – S20°W – 60.75' MDSH Tag
- 17 Certificates of Survey recorded in Liber 2, Pages 121-124, Dated 10/10/78 by James E. Stephens P.S. #16053
Found 1-1/2" pipe
14" Hickory tree – S19°E – 60.6'
16" Oak tree – N71°E – 80.9'
30" Oak tree – N29°W – 42.1'
- 18 Certificate of Survey Recorded in Liber 1, Pages 291-292, Dated 1/02/73 by Ron Helsel, P.S. #18994
Found 1-1/2" pipe 6' West of Centerline Upton Road (Same Witnesses as LCRC Liber 001, Page 611)
- 19 Certificate of Survey Recorded in Liber 1, Page 303, Dated 1/03/73 by Ron Helsel, P.S. #18994
Found 1-1/2" pipe 6' West of Centerline Upton Road (Same Witnesses as LCRC Liber 001, Page 611)
- 20 Certificate of Survey Recorded in Liber 1, Page 447, Dated 11/08/73 by Ron Helsel, P.S. #18994
Found 1-1/2" pipe 6' West of Centerline Upton Road (Same Witnesses as LCRC Liber 001, Page 611)
- 21 Certificate of Survey Recorded in Liber 2, Pages 79,80, and 81 Dated 8/1/78 by Laverne J. Hendryx, P.S. #3276 (Shows position of corner)
- 22 Certificate of Survey Recorded in Liber 2, Page 108 Dated 8/21/78 by Laverne J. Hendryx, P.S. #3276 (Shows position of corner)
- 23 Certificates of Survey recorded in Liber 2, Page 302, Dated April 21, 1980 by James E. Stephens P.S. #16053
Found 1-1/2" pipe
14" Hickory tree – S19°E – 60.6'
16" Oak tree – N71°E – 30.9'
30" Oak tree – N29°W – 42.1'
- 24 Certified Boundary Survey Recorded in Liber 4, Pages 118-119 Dated 7/9/84 by L. Bryan P.S. #25832
Set 1/2" Bar and Cap 25' West of Centerline Perry Road on fence lines East and West
MDSH Nail and tag West side 20" Oak – N80°E – 49.10'
MDSH Nail and tag East side 30" Walnut – North – 36.39'
Nail and tag East side 14" Walnut – South – 56.22'
Northeast corner Section 3, Meridian Township, 1 1/4" Pipe East 19.14'
- 25 Certificate of Survey Recorded in Liber 3, Page 46 Dated June 12, 1987 by Maurice H. Mahieu, P.S. #28414 Found 1 1/2" Pipe (Same Witnesses) Rerecorded in Liber 3, Page 170.
- 26 Certified Boundary Survey Recorded in Liber 3, Pages 555-557 Dated 12/11/89 by L. Bryan P.S. #25832 (Shows position of corner)
Found 1 1/4" pipe 6' West of Centerline Perry Road
MDSH Nail and tag West side 20" Oak – N75°E – 30.55'
MDSH Nail and tag East side 30" Walnut – N30°W – 41.86'
Nail and tag East side 14" Walnut – S20°W – 60.52'
- 27 Certified Boundary Survey Recorded in Liber 3, Pages 589-590, Dated 9-19-89 by L. Bryan, P.S. #25832 (Witnesses Same as Liber 3, Pages 555-557)
- 28 Certified Boundary Survey Recorded in Liber 3, Pages 668-669, Dated 7-05-88 by L. Bryan, P.S. #25832 (Shows SW 1/4 of Section 35)
- 29 Certified Boundary Survey Recorded in Liber 3, Pages 847-849, Dated 11-06-99 by L. Bryan, P.S. #25832
- 30 Certified Boundary Survey Recorded in Liber 3, Pages 927-928, Dated 8-29-86 by L. Bryan, P.S. #25832
- 31 Certified Survey Map Recorded in Liber 4, Page 201, Dated 12/14/89 by Marvin Fouty, P.S. #18989 SW Corner Section 35, T5N, R1W, Recorded in Liber 1, Page 611
- 32 Plat of Tyler Subdivision Recorded in Liber 7 of Plats, Pages 64-66, Dated June 7, 1994, By L. Bryan P.S. #25832 Shows Township line and indicates corner recorded in Liber 1, Page 611

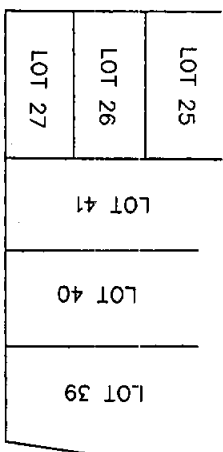
P.A. 345 INGHAM COUNTY
PEER APPROVED 10/23/2007 *RU*

GEODETIC DESIGNS INC.
5411 W. GRAND RIVER AVE.
LANSING, MI 48906
PHONE: (517) 908-0008
FAX: (517) 908-0009
www.geodeticdesigns.com



SECTION 3, T4N, R1W

O.M. RANDALL SUBDIVISION
CIRCA 1940

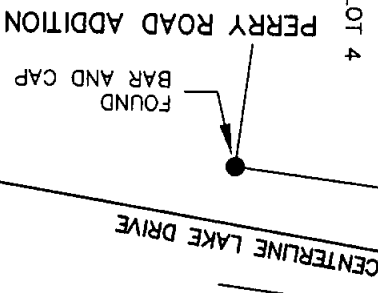


LOT 25
LOT 26
LOT 27
LOT 39
LOT 40
LOT 41

SECTION LINE

PERRY ROAD

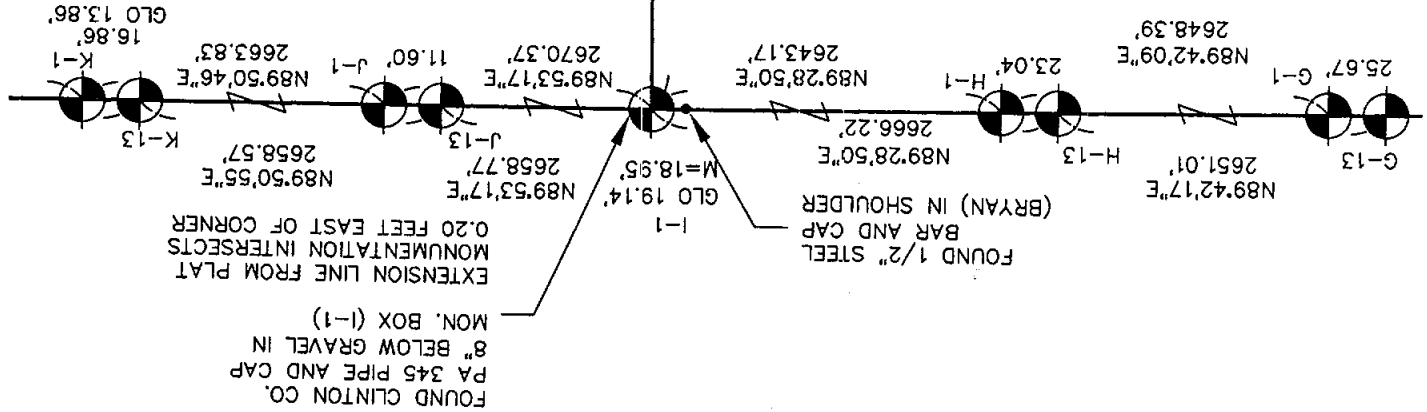
RECORD PLAT = N00°50'55"W 608.45'
PER O.M. RANDALL SUB. CIRCA 1940
M = N00°50'55"W 607.78'



LOT 4
LOT 72
LOT 73
LOT 28
LOT 29

FOUND KEYS
BAR AND CAP
PERRY ROAD ADDITION
FOUND KEYS
BAR AND CAP

SECTION 2, T4N, R1W



FOUND 1/2" STEEL
BAR AND CAP
(BRYAN) IN SHOULDER
GLO 19.14'
M=18.95'
N89°53'17"E
2658.77'
J-13
N89°50'55"E
2658.57'
K-13
N89°50'46"E
2663.83'
K-1
GLO 13.86'

FOUND 3/4" PIPE IN CONCRETE
FOUND 2" DOMED STEEL BAR
5" BELOW ASPHALT
CALLED FOR IN O.M.
RANDALL SUB.
CIR. 1940
2.18' EAST OF SECTION
LINE

FOUND KEYS
BAR AND CAP
PERRY ROAD ADDITION
FOUND KEYS
BAR AND CAP

SECTION LINE

PERRY ROAD

RECORD PLAT = N00°50'55"W 608.45'
PER O.M. RANDALL SUB. CIRCA 1940
M = N00°50'55"W 607.78'

SECTION 3, T4N, R1W

O.M. RANDALL SUBDIVISION
CIRCA 1940

SECTION 2, T4N, R1W

LAND CORNER RECORDATION CERTIFICATE
Filing Requirement of Act 74, Mich. P.A. 1970

For corners in

Meridian Township

INGHAM
(County)

Located In:

Corner Code #

1. Public Land Survey

T 4N R 1W MC-1

2. Property Controlling
in Section

S T R

3. Miscellaneous
Property in Sec.

S T R

4. Lot No. _____, Recorded Plat _____

5. Private Claims _____

I, Gilbert M. Barish, in a field survey on 24 Oct, 2007 do hereby state that under requirements of P.A. 74, Michigan P.A. of 1970, the corner points mentioned in lines 1 and 2 above were in conformance with regulations and rules therefore as required in the current manual of survey instructions of the United States Department of the Interior, Bureau of Land Management or by a decree of a Court of Law and /or that the corner points mentioned in lines 3, 4 and 5 above were in conformance with the rules of the Michigan Board of Land Surveyors or by a Decree of a Court of Law; established, re-established, monumented, recovered, found as expressed below:

NOTE: Not more than 2 corners, all in the same town and range, may be recorded on this certificate.

A. Description of original monument and accessories and/or subsequent restoration:

- 1) **02-February-1827** – Corner set by Deputy Surveyor Musgrove Evans
"West corrected between Sec. 3 and 10
8.37 ch (552.42 feet) set a post on the West shore of the Lake fw swf w06 S8°E 22
Willow 5 in N62W 78 lks
Aspen 12 in S7W 117 lks
39.94 (2,636.04 feet) Set 1/4 sec. post...
...79.87 to Sec. Corner."

B. Description of corner evidence found and/or method applied in restoring or reestablishing corner:

The apparent location of the Corner falls within a green area in Lake Lansing Park South along the West side of Lake Lansing. A search of the area yielded no evidence of the historical position. The area is a well maintained park with a manicured lawn, sidewalks, and a fishing/boating pier.

I established the position of the Meander corner by first locating the corners at H-3, J-3, I-1, and I-5 to compute the position originally established by Musgrove Evans at I-3 in the Ice of Lake Lansing. The position at H-3 and I-3 were utilized to proportion the position of the Meander Corner West of the lake as originally established in Item 1 above.

Established the position of the Meander Corner by single proportionate measure between H-3 and the computed position at I-3. Set a Standard Ingham County 3/4" x 24" Smooth steel bar and cap stamped "P.A. 345, PS 47942" in the lawn area.

Measurements: (H-3 to I-3) – 2,636.97' (MC-1 to I-3) – 552.62' (MC-1 to H-3) – 2,084.35 (GLO 2,083.62')

C. Description of monument for corner and accessories established to perpetuate locating the position of the corner:

Set standard Ingham County 3/4" X 24" smooth steel bar and cap stamped "P.A. 345, PS 47942 MC". The monument is located in Lake Lansing Park South nominally 23 feet West of the face of a sidewalk

S 64° E 23.60' Set Standard Ingham County Nail and Tag in the North face of a 36" Cottonwood
N 76° W 18.43' Set Standard Ingham County Nail and Tag in the Northeast face of a 14" Mulberry
S 26° W 107.67' Set Standard Ingham County Nail and Tag in the Southeast face of a 36" Oak
N 01° W 91.73' Southeast Corner of a Utility Shed
East 67' To the edge of Water of Lake Lansing

NOTE:

- 1) Standard Ingham County Nail and Tag is Defined as a 1/4" X 2-1/2" magnetic Alloy Nail with a 1-1/2" Aluminum Disc marked "Ingham PA 345 Witness"
2) Witness Bearings are based on True North and reflect a Magnetic Declination of 6°20' West

Signed by Gilbert M. Barish

Date 27-NOV-2007

Surveyor's Michigan License No. 47942

B: 13 P: 203 11/29/2007 09:26 AM
2007-050135 LAND CORNERS Receipt #35013
Paula Johnson, Ingham County, Michigan

Pages: 1



Register of Deeds Stamp & File Number

	A	B	C	D	E	F	G	H	I	J	K	L	M
1													
2	6		5		4			3		2		1	
3													
4	7		8		9			10		11		12	
5													
6	18		17		16			15		14		13	
7													
8	19		20		21			22		23		24	
9													
10	30		29		28			27		26		25	
11													
12	31		32		33			34		35		36	
13													

P.A. 345 INGHAM COUNTY
PEER APPROVED 10/23/2007

me



LAND CORNER RECORDATION CERTIFICATE
Filing Requirement of Act 74, Mich. P.A. 1970

For corners in

Meridian Township

INGHAM
(County)

Located In:

Corner Code #

1. Public Land Survey

T 4N R 1W MC-4

2. Property Controlling
in Section

S T R

3. Miscellaneous
Property in Sec.

S T R

4. Lot No. _____, Recorded Plat _____

5. Private Claims _____

I, Gilbert M. Barish, in a field survey on 7 August, 2006 do hereby state that under requirements of P.A. 74, Michigan P.A. of 1970, the corner points mentioned in lines 1 and 2 above were in conformance with regulations and rules therefore as required in the current manual of survey instructions of the United States Department of the Interior, Bureau of Land Management or by a decree of a Court of Law and /or that the corner points mentioned in lines 3, 4 and 5 above were in conformance with the rules of the Michigan Board of Land Surveyors or by a Decree of a Court of Law; established, re-established, monumented, recovered, found as expressed below:

NOTE: Not more than 2 corners, all in the same town and range, may be recorded on this certificate.

A. Description of original monument and accessories and/or subsequent restoration:

- 1) **02-February-1827** – Corner set by Deputy Surveyor Musgrove Evans
"North between Sections 2 and 3
65.09 chains Set a post on the North Shore of the lake fw
Tam 6 in N82E 14 lks
Aspen 6 in N18W 69 lks
79.41 int. the North Boundary 21 lks East of post cor..."

B. Description of corner evidence found and/or method applied in restoring or reestablishing corner:

The apparent location of the Corner falls nominally 17 North of the High Water Mark of Lake Lansing along the extension of Perry Road. The area is at the top of bank of a culvert outfall and appears to have been excavated at some point in the past.

I established the position of the Meander corner by first locating the corners at H-3 and J-3 to compute the position originally established by Musgrove Evans at I-3 in the Ice of Lake Lansing. I then utilized the positions at I-3 and I-1 to generate the line between sections 2 and 3. The meander corner is placed at the GLO proportionate distance from the position at I-1

Set a Standard Ingham County 3/4" x 24" Smooth steel bar and cap stamped "P.A. 345, PS 47942" in a slightly wooded area.

Measurements: (MC-4 to I-1) – 946.44' (GLO 945.12') (MC-4 to I-3) – 4,301.93' (GLO 4,295.94') (I-3 to I-1) 5,248.37' (GLO 5,241.06')

C. Description of monument for corner and accessories established to perpetuate locating the position of the corner:

Set standard Ingham County 3/4" X 24" smooth steel bar and cap stamped "P.A. 345, PS 47942 MC" a distance of 946.44 feet South of I-1 along the Section line. The corner is 17 feet North of the High Water Mark for Lake Lansing. Corner is located along the extension of Perry Road 50 feet south of the south edge of asphalt.

S 58° E 35.76' Set Standard Ingham County Nail and Tag in the South face of a 14" Maple
N 12° E 47.97' Set Standard Ingham County Nail and Tag in the East face of an 8" Guard Rail Post
N 38° W 27.32' Set Standard Ingham County Nail and Tag in the Northeast face of a twin 10" Elm
S 67° W 25.12' Set Standard Ingham County Nail and Tag in the South face of a multiple 8" Elm
S 80° E 7.0 feet to the center of a concrete culvert

NOTE:

- 1) Standard Ingham County Nail and Tag is Defined as a 1/4" X 2-1/2" magnetic Alloy Nail with a 1-1/2" Aluminum Disc marked "Ingham PA 345 Witness"
2) Witness Bearings are based on True North and reflect a Magnetic Declination of 6°20' West

Signed by Gilbert M. Barish
Surveyor's Michigan License No. 47942

Date 27-NOV-2007

B: 13 P: 206 11/29/2007 09:26 AM
2007-050138 LAND CORNERS Receipt #35013
Paula Johnson, Ingham County, Michigan

Pages: 1



Register of Deeds Stamp & File Number

	A	B	C	D	E	F	G	H	I	J	K	L	M
1													
2	6		5		4		3		2		1		
3													
4	7		8		9		10		11		12		
5													
6	18		17		16		15		14		13		
7													
8	19		20		21		22		23		24		
9													
10	30		29		28		27		26		25		
11													
12	31		32		33		34		35		36		
13													

P.A. 345 INGHAM COUNTY

PEER APPROVED 10/23/2007

R

