

SE 4

LAND CORNER RECORDATION CERTIFICATE

FILING REQUIREMENT OF ACT 74, MICH. P.A. 1970

FOR CORNERS OF--	Sec.	LOCATED IN--	CORNER CODE NUMBER
1. PUBLIC LAND SURVEY	10	T. 4 N. R. 1 E.	G-3
2. PROPERTY CONTROLLING IN SECTION		T. N. R. E.	
3. MISCELLANEOUS PROPERTY IN SECTION		T. N. R. E.	
4. LOT NO. _____, RECORDED PLAT _____			
5. PRIVATE CLAIMS _____			

LIBER

1 PG 177

FILED

SEP 21 1 49 PM '71

REGISTER OF DEEDS

MICHIGAN STATE BOARD OF REGISTRATION FOR LAND SURVEYORS

REGISTER OF DEEDS STAMP AND FILING NUMBER

I, Gary D. Lester do hereby certify that under requirements of P.A. 74, Michigan P.A. of 1970, the corner points mentioned in lines 1 and 2 above (identified with circles on index code diagram—over) were, in a field survey on August 25 1971, established, re-established, monumented, re-monumented, recovered or restored as expressed below and in conformance with regulations and rules therefore as required in the current manual of survey instructions of the United States Department of the Interior, Bureau of Land Management or by a decree of a court of law. Furthermore, that the corner points mentioned in lines 3, 4 and 5 above were, in a field survey on August 25 1971, found, recovered, restored, established or re-established as expressed below and in conformance with the rules of the Michigan State Board of Registration for Land Surveyors or, by a Decree of a Court of law:

A. Description of original monument and accessories and, or subsequent restoration:

Original monument and accessories obliterated.

B. Description of corner evidence found and/or method applied in restoring or re-establishing corner:

Given witnesses by Ingham County Road Commission. Location supported by fence North and Location is as called for in recorded plat of Lake O' The Hills Subdivision.

C. Description of monument for corner and accessories established to perpetuate locating the position of the corner:

Road under Construction.

Witnesses only for setting corners after construction completion.

Spike in 12" apple, NNE, 40.23'
 Spike in power pole, ESE, 83.95'
 Spike in telephone pole, WNW, 68.72'

SIGNED BY



DATE

9/8/71

SURVEYOR'S MICHIGAN REGISTRATION NO. 17624

(SEAL)

FOR STATE AND UNITED STATES AGENCIES:

SIGNED BY

CHIEF OF SURVEY PARTY

DATE

APPROVED AND SIGNED BY

MICHIGAN REGISTERED LAND SURVEYOR

DATE

(SEAL)

SURVEYOR'S MICHIGAN REGISTRATION NO.

CORNER NUMBERING CODE DIAGRAMS FOR IDENTIFYING LAND CORNER RECORDATIONS AND INDEXING

FOR PUBLIC LAND SURVEY CORNERS IN THE
T. 4N, R. 1W (MENTIONED OVER)

	A	B	C	D	E	F	G	H	I	J	K	L	M
1													
2	6		5		4		3		2		1		
3							⊕						
4	7		8		9		10		11		12		
5													
6	18		17		16		15		14		13		
7													
8	19		20		21		22		23		24		
9													
10	30		29		28		27		26		25		
11													
12	31		32		33		34		35		36		
13													

Apply letter prefix for corner points encircled above
for identifying corner recordation numbers over.

FOR PROPERTY CONTROLLING AND MISC.
PROPERTY CORNERS WITHIN THE SECTION
(MENTIONED OVER AND EXCLUDE LOT CORNER)

	1	2	3	4	5	6	7
3							
4							
5							
6							
7							
8							
9							
10							
11							
12							
13							
14							
15							
16							

1. Above coded numbers are positioned on 1/16 fractional lines of the section.
2. Township corner code numbers shall be applied to corners of above typical section not numbered.
3. Miscellaneous property corners within a section, located at points other than numbered above, shall be referenced to at least two of above corner code numbers.
4. Private claim corners to be tied to rectangular land corners if possible - sketch required below.

EXPLANATORY SKETCH IF NECESSARY -- BELOW

LAND CORNER RECORDATION CERTIFICATE

FILING REQUIREMENT OF ACT 74, MICH. P.A. 1970

LIBER 4 PG 146

FILED

FOR CORNERS OF—	LOCATED IN—	CORNER CODE NUMBER
1. PUBLIC LAND SURVEY	4 2 R 1 W	G-1, G-2
2. PROPERTY CONTROL ING IN SECTION	S R W	
3. MISCELLANEOUS PROPERTY IN SECTION	S R W	
4. LOT NO.	RECORDED PLAT	
5. PRIVATE CLAIMS		

FEB 16 10 47 AM '78

REGISTER OF DEEDS

Paula Johnson

INGHAM COUNTY, MICH.

REGISTER OF DEEDS STAMP AND
FILING NUMBER

I, Ronnie M. Lester, do hereby certify that under requirements of P.A. 74, Michigan P.A. of 1970, the corner points mentioned in lines 1 and 2 above were in a field survey on December 8, 1972, established, re-established, monumented, re-monumented, recovered or restored as expressed below and in conformance with regulations and rules thereto as required in the current manual of survey instructions of the United States Department of the Interior, Bureau of Land Management or by a decree of a court of law. Furthermore, that the corner points mentioned in lines 3, 4 and 5 above were, in a field survey on _____, 19____ found, recovered, restored, established or re-established as expressed below and in conformance with the rules of the Michigan State Board of Registration for Land Surveyors or, by a Decree of a Court of law.

A. Description of original monument and accessories and/or subsequent restoration.

G-1 Original monument and accessories obliterated.

G-2 Original monument and accessories obliterated.

B. Description of corner evidence found and/or method applied in restoring or re-establishing corner.

G-1 ICRC records call for axle shaft at North end of fence post with following witnesses: 27" elm, N46°W, 44.21'; 23" elm, N20°W, 59.82'; S.W. corner Section 34, West 25.60' (1" pipe). Found no axle. Elm trees gone. Set 1/2" bar & cap 25.60' East of found 3/4" pipe. Falls in fence line South.

G-2 ICRC records call for axle shaft with following witnesses: 5" iron pipe, East, 15.0' 14" poplar, E.S.E., 70.14; 16" oak, South 4.35'. Found axle shaft at fence intersection.

C. Description of monument for corner and accessories established to perpetuate locating the position of the corner:

G-1 1/2" bar & cap as described above.
Nail & tag in S.W. side triple 6" willow, E.N.E.
3/4" pipe West, 25.60'
Nail & tag in West side 15" wild cherry, S.E., 50.67'
Nail & tag in West side 10" oak, South, 45.09'

G-2 Found 3" gear with 1" shaft.
Centerline 5" iron post, East, 15.30'
Nail & tag in N.E. side 36" poplar, S.E., 70.05'
Nail & tag in North side 28" ash, West, 62.40'

SIGNED BY Ronnie M. LesterDATE 2/16/78SURVEYOR'S MICHIGAN REGISTRATION NO. 18998

FOR STATE AND UNITED STATES AGENCIES:

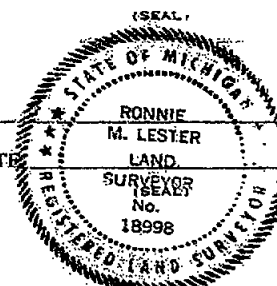
SIGNED BY _____ DATE _____

CHIEF OF SURVEY PARTY

APPROVED AND SIGNED BY _____ DATE _____

MICHIGAN REGISTERED LAND SURVEYOR

SURVEYOR'S MICHIGAN REGISTRATION NO. _____



SURVEY & REMONUMENTATION

Remonumentation
Bath Township

MAY 17 1995

LAND CORNER RECORDATION CERTIFICATE Filing Requirement of Act 74, Mich. P.A. 1970

COMMISSION

For corners in

Clinton
(County)

Located In:

Corner Code ##

- | | | | | | |
|---------------------------------------|---|----|---|----|--------|
| 1. Public Land Survey | T | 5N | R | 1W | G - 13 |
| | T | | R | | |
| | T | | R | | |
| | T | | R | | |
| 2. Property Controlling
In Section | S | | T | R | |
| | S | | T | R | |
| 3. Miscellaneous
Property In Sec. | S | | T | R | |
| | S | | T | R | |

LIBER 4, PAGE 66

MAY 2 2.00 PM '95

REGISTER OF DEEDS
CLINTON COUNTY, MICH.
Carol Woolley

Register of Deeds Stamp & File Number

4. Lot No. _____, Recorded Plat _____
5. Private Claims _____

I, Dwight R. Schofield, in a field survey on December 8, 1993, do hereby certify that under requirements of P.A. 74, Michigan P.A. of 1970, the corner points mentioned in lines 1 and 2 above were in conformance with regulations and rules therefore as required in the current manual of survey instructions of the United States Department of the Interior, Bureau of Land Management or by a decree of a Court of Law and/or that the corner points mentioned in lines 3, 4 and 5 above were in conformance with the rules of the Michigan Board of Land Surveyors or by a Decree of a Court of Law; established, re-established, monumented, re-monumented, recovered, found as expressed below:

NOTE: Not more than 4 corners, all in the same town and range, may be recorded on this certificate.

A. Description of original monument and accessories and/or subsequent restoration:

Original survey by Harvey Parke in November of 1826

No county surveyor records.

Subsequent record of corner by MDOT witnesses on M-78 plans dated 1958

A 1" Iron Pipe 25.6' West of the NW corner of Sec. 3, T4N, R1W

N 15° W 29.60' 27" Elm

North 53.15' 23" Elm

(SEE BACK OF SHEET)

B. Description of corner evidence found and/or method applied in restoring or reestablishing corner:

Found 1" Pipe in fence lines West, East and North

nail & tag in W side cor. post N 8.18'

and is accepted as a careful and faithful perpetuation of the position of the original corner. Removed 1" pipe and set standard Clinton County monument. Verified position from Land Corner Recordation Certificate.

C. Description of monument for corner and accessories established to perpetuate locating the position of the corner:

Clinton County Monument

North	8.18'	nail & tag #18998 in West side fence post
S 40° E	8.88'	nail & tag #34978 in East side of 15" Box Elder
East	53.08'	nail & tag #34978 in South side 5" Ash
West	78.40'	nail & tag #34978 in North side twin Poplar

APPROVED BY
CLINTON COUNTY PEER GROUP
DATED 4/26/95
g 79

Signed by

Date December 21, 1994

Surveyor's Michigan License No.

34978

FORM APPROVED BY MICHIGAN STATE BOARD OF LAND SURVEYORS, JAN. 26, 1971
REVISED MAY 14, 1975
REVISED JAN., 1983

Subsequent recordation of this corner by Ronnie M. Lester, PS 18998 and recorded in L.1, P.607 dated 12/28/72 stating he found the corner as called for by MDOT

Set nail & tag West side corner post, North, 8.18'
 Found nail & tag South side 24" willow, ENE, 81.65'
 Found nail & tag West side 16" cherry, SE, 68.76'
 Found nail & tag West side 12" oak, SSE, 51.00'

Unrecorded survey by Marvin F. Fouly, PS 18989 of Kyes Engineering & Associates, Inc., dated 8/24/76

Pipe

nail & tag in W side cor. post	N	8.18'
nail & tag in S side 24" Willow	ENE	81.65'
nail & tag in W side 18" Cherry	SE	68.76'

Unrecorded survey by Larry A. Bryan, PS 25832 of Bryan Land Surveys, PC, dated 6/30/87

3/4" Pinch Pipe in fences East, West and North

Found 4" clay pipe (NW cor. Sec.3, T4N, R1W)	East	25.70'
Found nail & tag #18998 W. side post	North	8.18'
Centerline 15" Oak	S 10° E	51.0'

LAND CORNER RECORDATION CERTIFICATE

FILING REQUIREMENT OF ACT 74, MICH. P.A. 1970

LIBER 1 10 589

FOR CORNERS OF--	LOCATED IN--	CORNER CODE NUMBER
1. PUBLIC LAND SURVEY	T. 4 N. R. 1 W.	E-3
2. PROPERTY CONTROLLING IN SECTION	T. N. R. E.	
3. MISCELLANEOUS PROPERTY IN SECTION	T. N. R. E.	
4. LOT NO.	RECORDED PLAT	
5. PRIVATE CLAIMS		

FILED

JUN 26 10 35 AM '72

REGISTER OF DEEDS

Paul M. Lewis
COUNTY, MICH.

REGISTER OF DEEDS STAMP AND FILING NUMBER

I, James E. Stephens do hereby certify that under requirements of P.A. 74, Michigan P.A. of 1970, the corner points mentioned in lines 1 and 2 above (identified with circles on index code diagram - over) were, in a field survey on December 20, 1971, established, re-established, monumented, re-monumented, recovered or restored as expressed below and in conformance with regulations and rules therefore as required in the current manual of survey instructions of the United States Department of the Interior, Bureau of Land Management or by a decree of a court of law. Furthermore, that the corner points mentioned in lines 3, 4 and 5 above were, in a field survey on 19, found, recovered, restored, established or re-established as expressed below and in conformance with the rules of the Michigan State Board of Registration for Land Surveyors or, by a Decree of a Court of law:

A. Description of original monument and accessories and/or subsequent restoration:
The original monument was not found.

B. Description of corner evidence found and/or method applied in restoring or re-establishing corner:
A railroad spike was set in the centerline of the section line road (Lake Lansing road) and in the centerline of the 1/4 line road (Newton Road) from old witnesses. An old axle shaft was found at the S 1/4 corner on August 22, 1966 and was witnessed by Stephens Engineering.

C. Description of monument for corner and accessories established to perpetuate locating the position of the corner:
The railroad spike set at the S 1/4 corner was witnessed with the following:

Survey tag in a 14 inch Box Elder N52°13'W 51.73 feet.
Survey tag in a utility pole N62°45'E 54.75 feet.
Survey tag in a utility pole S38°54'W 47.18 feet.
The bearing of the section line west of the corner is N88°20'W.
The bearing of the 1/4 line north of the corner is N1°40'10"E.

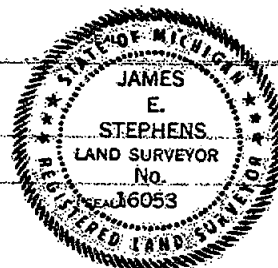
SIGNED BY James E. Stephens
SURVEYOR'S MICHIGAN REGISTRATION NO. 16053

DATE January 4, 1972

FOR STATE AND UNITED STATES AGENCIES:

SIGNED BY _____ CHIEF OF SURVEY PARTY _____ DATE _____

APPROVED AND SIGNED BY _____ MICHIGAN REGISTERED LAND SURVEYOR _____ DATE _____



295

SURVEYOR'S MICHIGAN REGISTRATION NO.

Form No. MLM735
DOUBLEDAY BROS. & CO., KALAMAZOO, MICH.

FORM APPROVED BY MICHIGAN STATE BOARD OF REGISTRATION, JAN. 28, 1971
DISTRIBUTED BY MICHIGAN SOCIETY OF REGISTERED LAND SURVEYORS

CORNER NUMBERING CODE DIAGRAMS FOR IDENTIFYING LAND CORNER RECORDATIONS AND INDEXING

FOR PUBLIC LAND SURVEY CORNERS IN THE
T. 4N, R. 10W (MENTIONED OVER)

	A	B	C	D	E	F	G	H	I	J	K	L	M
2	6		5		4		3		2		1		
3													
4	7		8		9		10		11		12		
5													
6	18		17		16		15		14		13		
7													
8	19		20		21		22		23		24		
9													
10	30		29		28		27		26		25		
11													
12	31		32		33		34		35		36		
13													

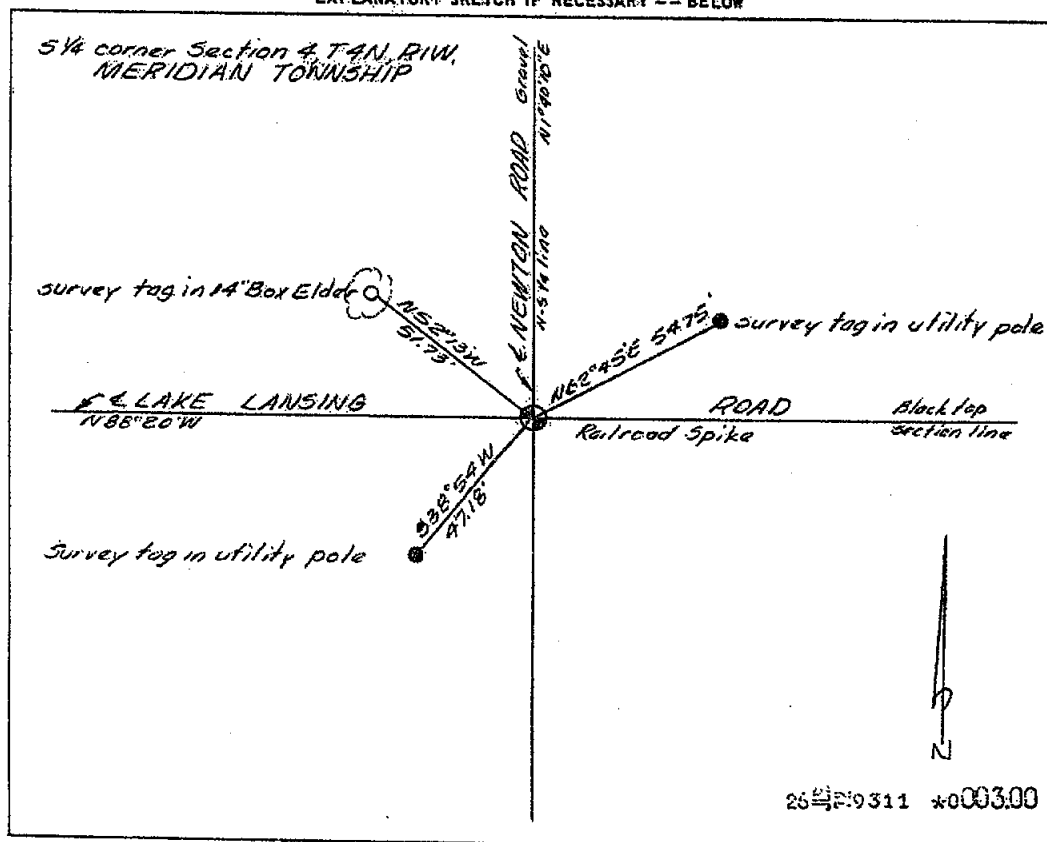
Apply letter prefix for corner points encircled above for identifying corner recordation numbers over.

FOR PROPERTY CONTROLLING AND MISC.
PROPERTY CORNERS WITHIN THE SECTION
(MENTIONED OVER AND EXCLUDE LOT CORNER)

	1	2	3	4	5	6	7
3							
4							
5							
6							
7							
8							
9							
10							
11							
12							
13							
14							
15							
16							

1. Above coded numbers are positioned on 1/16 fractional lines of the section.
2. Township corner code numbers shall be applied to corners of above typical section not numbered.
3. Miscellaneous property corners within a section, located at points other than numbered above, shall be referenced to at least two of above corner code numbers.
4. Private claim corners to be tied to rectangular land corners if possible - sketch required below.

EXPLANATORY SKETCH IF NECESSARY -- BELOW



LAND CORNER RECORDATION CERTIFICATE

FILING REQUIREMENT OF ACT 74, MICH. P.A. 1970

Center of Section 4, T4N, R1W, Meridian Twp.
Ingham county

LIBER

1 PG 585

FOR CORNERS OF --	LOCATED IN --	CORNER CODE NUMBER
1. PUBLIC LAND SURVEY _____ T. 4 N. R. 1 W.		E-2
2. PROPERTY CONTROLLING IN SECTION _____ T. _____ N. R. _____ E. W.		
3. MISCELLANEOUS PROPERTY IN SECTION _____ T. _____ N. R. _____ E. W.		
4. LOT NO. _____, RECORDED PLAT _____		
5. PRIVATE CLAIMS _____		

FILED

JUN 26 10 35 AM '72

REGISTER OF DEEDS

Carol M. Lewis
INGHAM COUNTY, MICH.

REGISTER OF DEEDS STAMP AND
FILING NUMBER

I, James E. Stephens, do hereby certify that under requirements of P.A. 74, Michigan P.A. of 1970, the corner points mentioned in lines 1 and 2 above (identified with circles on index code diagram—over) were, in a field survey on December 20, 1971, established, re-established, monumented, re-monumented, recovered or restored as expressed below and in conformance with regulations and rules therefore as required in the current manual of survey instructions of the United States Department of the Interior, Bureau of Land Management or by a decree of a court of law. Furthermore, that the corner points mentioned in lines 3, 4 and 5 above were, in a field survey on _____ 19____, found, recovered, restored, established or re-established as expressed below and in conformance with the rules of the Michigan State Board of Registration for Land Surveyors or, by a Decree of a Court of law:

A. Description of original monument and accessories and/or subsequent restoration:
The original monument was not found.

B. Description of corner evidence found and/or method applied in restoring or re-establishing corner:
A 3/4 inch iron rod was found in the centerline of the 1/4 line road (Newton Road) and on a projection of two farm fences east and west of the corner.

C. Description of monument for corner and accessories established to perpetuate locating the position of the corner:
The 3/4 inch iron rod found at the Center of the Section was left in position with the following witnesses;

Survey tag in a 8 inch Box Elder N71°56'W 41.46 feet.
Survey tag in a 10 inch Box Elder S74°12'W 80.70 feet.
Survey tag in a utility pole S14°38'W 98.60 feet.
The bearing of the 1/4 line south of the corner is S7°40'10"W.

SIGNED BY James E. Stephens DATE December 31, 1971

SURVEYOR'S MICHIGAN REGISTRATION NO. 16053

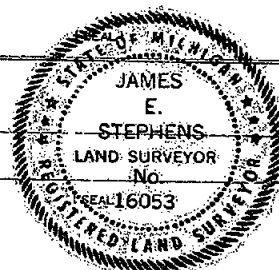
FOR STATE AND UNITED STATES AGENCIES:

SIGNED BY _____ DATE _____

CHIEF OF SURVEY PARTY

APPROVED AND SIGNED BY _____ DATE _____

MICHIGAN REGISTERED LAND SURVEYOR



LAND CORNER RECORDATION CERTIFICATE

FILING REQUIREMENT OF ACT 74, MICH. P.A. 1970

Center of Section 4, T4N, R1W, Meridian Township
Ingham County

LIBER 3 PG 431

FOR CORNERS OF--	LOCATED IN--	CORNER CODE NUMBER	FILED
1. PUBLIC LAND SURVEY	1 4N 2. R 1W 6.	F-2	
2. PROPERTY CONTROL- ING IN SECTION	1. N. R. 1.		
3. MISCELLANEOUS PROPERTY IN SECTION	1. N. R. 1.		
4. LOT NO.	1. RECORDED PLAT		
5. PRIVATE CLAIMS			

SEP 4 12 52 PM '75

REGISTER OF DEEDS

David M. Lewis
INGHAM COUNTY, MICH.

REGISTER OF DEEDS STAMP AND
FILING NUMBER

1. **James E. Stephens** do hereby certify that under requirements of P.A. 74, Michigan P.A. of 1970 the corner points mentioned in lines 1 and 2 above (identified with circles on index code diagram—overlaid) were, in a field survey on **August 20, 1975**, established, re-established, monumented, re-monumented, recovered or restored as expressed below and in conformance with regulations and rules therefore as required in the current manual of survey instructions of the United States Department of the Interior, Bureau of Land Management or by a Decree of a court of law. Furthermore, that the corner points mentioned in lines 3, 4 and 5 above were, in a field survey on 19 , found, recovered, restored, established or re-established as expressed below and in conformance with the rules of the Michigan State Board of Registration for Land Surveyors or, by a Decree of a Court of law:

A. Description of original monument and accessories and or subsequent restoration:

The original monument was not set.

B. Description of corner evidence found and or method applied in restoring or re-establishing corner:

This certificate is being filed to provide up-dated information on the previous filing recorded in Liber 1, page 585. Two of the witnesses previously recorded were destroyed.

C. Description of monument for corner and accessories established to perpetuate locating the position of the corner:

The 3/4 inch solid iron rod found at the center of section was witnessed with the following;

Survey tag on the West side of a 16" Hickory tree, S88°E 95.30 feet.
Survey tag on the North side of a utility pole, S14°38'W 98.60 feet.
Survey tag on the East side of a utility pole, N4°17'W 189.50 feet.

SIGNED BY *James E. Stephens* DATE August 27, 1975

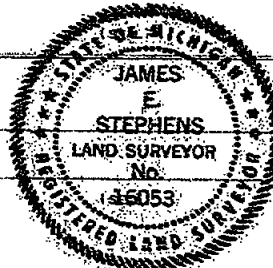
SURVEYOR'S MICHIGAN REGISTRATION NO. 16053

FOR STATE AND UNITED STATES AGENCIES:

SIGNED BY _____ DATE _____
CHIEF OF SURVEY PARTY

APPROVED AND SIGNED BY _____ DATE _____
MICHIGAN REGISTERED LAND SURVEYOR

SURVEYOR'S MICHIGAN REGISTRATION NO. _____



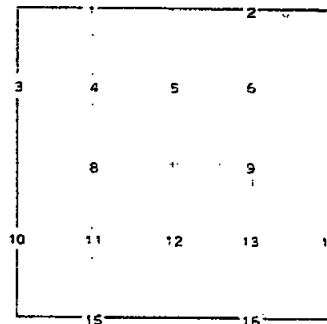
CORNER NUMBERING CODE DIAGRAMS FOR IDENTIFYING LAND CORNER RECORDATIONS AND INDEXING

FOR PUBLIC LAND SURVEY CORNERS IN THE
T. 4N, R. 1W (MENTIONED OVER)

	A	B	C	D	E	F	G	H	I	J	K	L	M
2	6	5				4			3	2	1		
3													
4	7	8	9	10	11	12							
5													
6	18	17	16	15	14	13							
7													
8	19	20	21	22	23	24							
9													
10	30	29	28	27	26	25							
11													
12	31	32	33	34	35	36							
13													

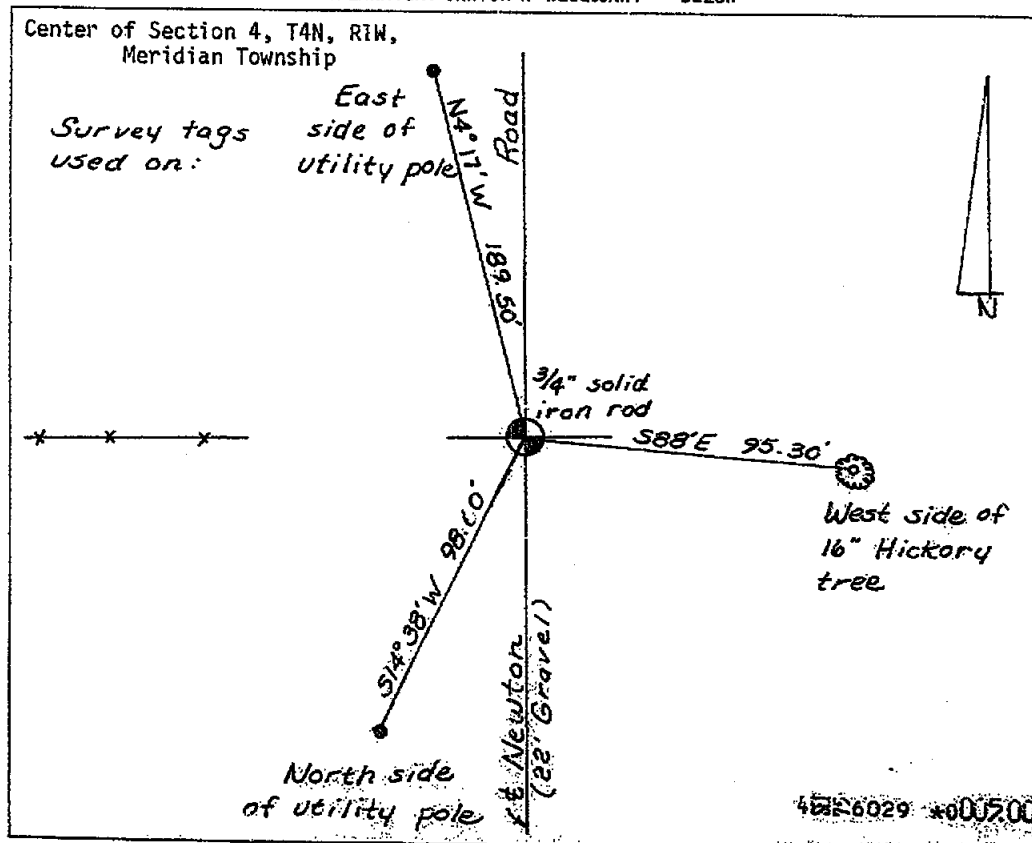
Apply letter prefix for corner points encircled above for identifying corner recordation numbers over.

FOR PROPERTY CONTROLLING AND MISC.
PROPERTY CORNERS WITHIN THE SECTION
(MENTIONED OVER AND EXCLUDE LOT CORNER)



1. Above coded numbers are positioned on 1/16 fractional lines of the section.
2. Township corner code numbers shall be applied to corners of above typical section not numbered.
3. Miscellaneous property corners within a section, located at points other than numbered above, shall be referenced to at least two of above corner code numbers.
4. Private claim corners to be tied to rectangular land corners if possible - sketch required below.

EXPLANATORY SKETCH IF NECESSARY -- BELOW



LAND CORNER RECORDATION CERTIFICATE

FILING REQUIREMENT OF ACT 74, MICH. P.A. 1970

USER

3 PG 612

FOR CORNERS OF: Sec. LOCATED IN: CORNER CODE NUMBER
 1. PUBLIC LAND SURVEY 4 T. 4N N. S. R. 1W E. F-1
 2. PROPERTY CONTROLLING IN SECTION T N. S. R. W.
 3. MISCELLANEOUS PROPERTY IN SECTION T N. S. R. W.
 4. LOT NO. RECORDED PLAT
 5. PRIVATE CLAIMS

FILED

SEP 7 3 45 PM '76
 REGISTER OF DEEDS
 Clyde M. Lewis
 INGHAM COUNTY, MICH

REGISTER OF DEEDS STAMP AND
 FILING NUMBER

I, Marvin F. Fouty, do hereby certify that under requirements of P.A. 74, Michigan P.A. of 1970, the corner points mentioned in lines 1 and 2 above were, in a field survey on 7-1-76, 19____, established, re-established, monumented, re-monumented, recovered or restored as expressed below and in conformance with regulations and rules therefore as required in the current manual of survey instructions of the United States Department of the Interior, Bureau of Land Management or by a decree of a court of law. Furthermore, that the corner points mentioned in lines 3, 4 and 5 above were, in a field survey on____, 19____, found, recovered, restored, established or re-established as expressed below and in conformance with the rules of the Michigan State Board of Registration for Land Surveyors or, by a Decree of a Court of law:

A. Description of original monument and accessories and or subsequent restoration:

N 1/4 corner of Section 4 not set in original government survey. Could find no record of corner being established by the County Surveyor. The corner has been occupied in the past by a 3/4" pipe and used in several adjacent surveys.

B. Description of corner evidence found and/or method applied in restoring or re-establishing corner:

Set 1/2" bar and cap by retracement of deed lines from recent survey by Surveyor Clyde Stephens.

C. Description of monument for corner and accessories established to perpetuate locating the position of the corner:

1/2" bar and cap N 1/4 corner Section 4, T4N, R1W
 Tag in fence corner post W 10.94'
 Tag in 18" Oak NW 18.15'
 Tag in 20" walnut SE 30.03'

SIGNED BY Marvin Fouty DATE Aug. 30, 1976

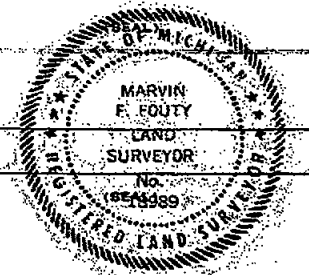
SURVEYOR'S MICHIGAN REGISTRATION NO. 18989

FOR STATE AND UNITED STATES AGENCIES:

SIGNED BY _____ DATE _____

APPROVED AND SIGNED BY _____ DATE _____

SURVEYOR'S MICHIGAN REGISTRATION NO. _____



FORM APPROVED BY MICHIGAN STATE BOARD OF REGISTRATION, JAN. 28, 1971
 REVISED MAY 14, 1975

990

MAY PLACE SKETCH ON BACK OR ATTACHED SHEET

RE
JAN 27 2000

SECTION

CLINTON COUNTY REMONUMENTATION

SOUTH 1/4 CORNER OF SECTION 33, T5N, R1W, BATH TOWNSHIP, CLINTON COUNTY, MICHIGAN.

LAND CORNER RECORDATION CERTIFICATE

Filing Requirement of Act 74, Mich. P.A. 1970

LIBER 004 PAGE 329

For corners in
CLINTON
(County)

Located In:

Corner Code #

RECORDED

DEC 21 12 47 PM '99

REGISTER OF DEEDS
CLINTON COUNTY, MICH.

Lawrence Winsley
Register of Deeds Stamp & File Number

1. Public Land Survey T 5N R 1W F-13
T R
T R
T R
2. Property Controlling S T R
in Section S T R
3. Miscellaneous S T R
Property in Sec. S T R
4. Lot No. , Recorded Plat
5. Private Claims

I, Arden S. Pierson, in a field survey on 7/29/99
do hereby certify that under requirements of P.A. 74, Michigan P.A. of 1970, the corner points mentioned
in lines 1 and 2 above were in conformance with regulations and rules therefore as required in the
current manual of survey instructions of the United States Department of the Interior, Bureau of Land
Management or by a decree of a Court of Law and/or that the corner points mentioned in lines 3, 4 and 5
above were in conformance with the rules of the Michigan Board of Land Surveyors or by a Decree of a
Court of Law, established, re-established, monumented, re-monumented, recovered, found as
expressed below.

NOTE: Not more than 2 corners, all in the same town and range, may be recorded
on this certificate.

A. Description of original monument and accessories and/or subsequent restoration:

TOWNSHIP BOUNDARY SURVEY BY LUCIUS LYON, DEPUTY SURVEYOR IN 1826
40.00 (CHAINS) SET H.M.P.

W. OAK 22" - N40°E - .60 (39.60')
D.O. 22" - N59°W - .35 (23.10')

HOLLISTER (COUNTY SURVEYOR) NOTES - MARCH, 1892
CORNER 32 & 33, RUN EAST 40.41(2667.06') SET STONE FROM ONE US BOUNDARY TREE

(SEE BACK OF SHEET)

	A	B	C	D	E	F	G	H	I	J	K	L	M
1													
2	6	5	4	3	2	1							
3													
4	7	8	9	10	11	12							
5													
6	18	17	16	15	14	13							
7													
8	19	20	21	22	23	24							
9													
10	30	29	28	27	26	25							
11													
12	31	32	33	34	35	36							
13													

APPROVED BY
CLINTON COUNTY PEER GROUP
DATED 8/11/99
gfs

B. Description of corner evidence found and/or method applied in restoring or reestablishing corner:

FOUND 1/2" ROD NEXT TO PLOW POINT NEXT TO LARGE STONES, AND ACCEPTED AS A PERPETUATION OF THE POSITION OF THE
ORIGINAL CORNER.

SET STANDARD CLINTON COUNTY MONUMENT AND CARSONITE MARKER.

* STANDARD CLINTON COUNTY MONUMENT IS A 2 1/2" DIAMETER STEEL TUBE, 30" LONG, WITH A STAMPED BRASS CAP AND ABREAKEAWAY
MAGNETIC BASE.

C. Description of monument for corner and accessories established to perpetuate locating the position of the corner:

F-13
SOUTH 1/4 CORNER OF
SECTION 33, T5N, R1W,
STANDARD CLINTON COUNTY MONUMENT
WITH CARSONITE MARKER
WEST SIDE NICHOLS ROAD ASPHALT
FOUND IRON - EAST - 75.14'
NAIL & TAG #19003 IN SE SIDE 20" OAK - N33°E - 70.43'
NAIL & TAG #16053 IN SOUTH SIDE 21" OAK - N84°E - 49.18'
NAIL & TAG #25832 IN EAST SIDE 12" ASH - S04°W - 20.08'
IRON IN CONCRETE MONUMENT - N86°W - 33.01'

E-13 S89°31'04"W 2661.15'
G-13 N89°41'52"E 2655.53'
BEARINGS BASED ON SOLAR OBSERVATIONS TAKEN AT M-13



Signed by

Arden S. Pierson

Date

9/08/99

Surveyor's Michigan License No.

13039

FORM APPROVED BY MICHIGAN STATE BOARD OF LAND SURVEYORS, JAN. 26, 1971
REVISED MAY 14, 1975
REVISED JAN, 1985
REVISED OCT, 1986
ADAPTED FOR WORD PROCESSING JAN, 1996

F-13 SOUTH ¼ CORNER OF SECTION 33, T5N, R1W, BATH TOWNSHIP, CLINTON COUNTY, MICHIGAN.

LCRC LIBER 2, PAGE 859, DATED 11/25/92 BY LARRY BRYAN, PS #25832
 FOUND ¼" BAR NEXT TO PLOW POINT
 FOUND CONCRETE MONUMENT - WEST - 33.06'
 FOUND NAIL AND TAG #16053 SOUTH SIDE 18" OAK - N85°E - 49.23'
 FOUND NAIL AND TAG #19003 SOUTH SIDE 20" OAK - N35°E - 70.49'
 SET NAIL AND TAG WEST SIDE 12" MULTI-ASH - N15°E - 37.08'

PLAT OF THE MEADOWS SUBDIVISION - RECORDED IN LIBER 7 OF PLATS, PAGES 89-90, DATED JULY 21, 1995 BY DWIGHT W. SCHOFIELD, PS #34976. (SHOWS CORNER POSITION) LIBER 2, PAGE 859.

PLAT OF THE MEADOWS SUBDIVISION NO. 3, RECORDED IN LIBER 8 OF PLATS, PAGES 79-80, BY ROGER P. MAHONEY, PS #41105, (SHOWS CORNER POSITION) LIBER 2, PAGE 859.

CERTIFIED SURVEY MAP RECORDED LIBER 4, PAGES 717-719, DATED 12/01/93 BY ARDEN S. PIERSON, PS #13039 (SHOWS CORNER POSITION) LIBER 2, PAGE 859

CERTIFIED BOUNDARY SURVEY, RECORDED IN LIBER 4, PAGES 809-810, DATED 11/26/90 BY LARRY BRYAN, PS #25832 (SHOWS POSITION OF CORNER)
 FOUND ¼" BAR NEXT TO PLOW POINT
 FOUND CONCRETE MONUMENT - WEST - 33.06'
 FOUND NAIL AND TAG #16053 - SOUTH SIDE 18" OAK - N85°E - 49.23'
 FOUND NAIL AND TAG #19003 - SOUTH SIDE 20" OAK - N35°E - 70.49'
 SET NAIL AND TAG WEST SIDE 24" WALNUT - N20°W - 68.60'

CERTIFIED SURVEY MAP RECORDED IN LIBER 690, PAGES 941-942, DATED 8/16/95 BY ARDEN S. PIERSON, PS #13039 (REVISION OF PREVIOUS SURVEY - SHOWS POSITION OF CORNER)

PLAT OF MEADOW RIDGE ESTATES, RECORDED IN LIBER 8 OF PLATS, PAGES 48-49, DATED JUNE 28, 1996 BY FRED N. WHITE, PS #12034 (SHOWS POSITION OF CORNER - LCRC LIBER 2, PAGE 859)

RECORDED

JAN 27 2000

SECTION