

LAND CORNER RECORDATION CERTIFICATE
FILING REQUIREMENT OF ACT 74, MICH. P.A.1970

FOR CORNERS OF—	LOCATED IN—	CORNER CODE NUMBER
1. PUBLIC LAND SURVEY	T. 4N N. S., R. 1W E. W.	K-9
2. PROPERTY CONTROLLING IN SECTION	T. S., R. E. W.	
3. MISCELLANEOUS PROPERTY IN SECTION	T. S., R. E. W.	
4. LOT NO.	RECORDED PLAT	
5. PRIVATE CLAIMS		

INDEX 1 PG 111

FILED

AUG 13 8 39 AM '71

REGISTER OF DEEDS
Mia Bell Humphrey
INGHAM COUNTY, MICH.

REGISTER OF DEEDS STAMP AND
FILING NUMBER

I, James E. Stephens do hereby certify that under requirements of P.A. 74, Michigan P.A. of 1970, the corner points mentioned in lines 1 and 2 above (identified with circles on index code diagram—over) were, in a field survey on June 29, 1971, established, re-established, monumented, re-monumented, recovered or restored as expressed below and in conformance with regulations and rules therefore as required in the 'current manual' of survey instructions of the United States Department of the Interior, Bureau of Land Management or by a decree of a court of law. Furthermore, that the corner points mentioned in lines 3, 4 and 5 above were, in a field survey on 19, found, recovered, restored, established or re-established as expressed below and in conformance with the rules of the Michigan State Board of Registration for Land Surveyors or, by a Decree of a Court of law:

A. Description of original monument and accessories and/or subsequent restoration:
The original monument not found.

B. Description of corner evidence found and/or method applied in restoring or re-establishing corner:
A 1 1/2 inch square iron bar was found at the intersection of three old farm fences.

C. Description of monument for corner and accessories established to perpetuate locating the position of the corner:
The 1 1/2 inch iron bar found at the NW. corner of the section was left in position with the following witnesses; S28°49'W 3.20 feet to a Stephens Engineering tag in a 6 inch Oak, S7°47'W 48.0 feet to the NE. corner of a Consumers Power Company transmission tower, Stephens tag in a 6 inch Oak S6°17'E 20.80 feet.

SIGNED BY James E. Stephens DATE July 1, 1971

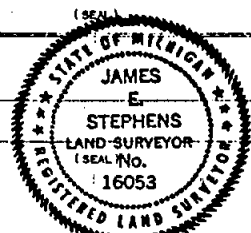
SURVEYOR'S MICHIGAN REGISTRATION NO. 16053

FOR STATE AND UNITED STATES AGENCIES:

SIGNED BY _____ DATE _____
CHIEF OF SURVEY PARTY

APPROVED AND SIGNED BY _____ DATE _____
MICHIGAN REGISTERED LAND SURVEYOR

SURVEYOR'S MICHIGAN REGISTRATION NO. _____



LAND CORNER RECORDATION CERTIFICATE

FILING REQUIREMENT OF ACT 74, MICH. P.A.1970

NW. CORNER SECTION 20, T4N,R1E, WILLIAMSTOWN TWP 4BER
INGHAM COUNTY

1 N 497

FOR CORNERS OF--	LOCATED IN--	CORNER CODE NUMBER
1. PUBLIC LAND SURVEY	T. 4 N. R. 1 E.	C-7
2. PROPERTY CONTROLLING IN SECTION	T. N. S. R. E. W.	
3. MISCELLANEOUS PROPERTY IN SECTION	T. N. S. R. E. W.	
4. LOT NO.	RECORDED PLAT	
5. PRIVATE CLAIMS		

FILED

MAY 10 10 20 AM '72
REGISTER OF DEEDS
Miss Bill Humphrey
INGHAM COUNTY, MICH.

REGISTER OF DEEDS STAMP AND
FILING NUMBER

I, James E. Stephens do hereby certify that under requirements of P.A. 74, Michigan P.A. of 1970, the corner points mentioned in lines 1 and 2 above (identified with circles on index code diagram - over) were, in a field survey on March 24, 1972, established, re-established, monumented, re-monumented, recovered or restored as expressed below and in conformance with regulations and rules therefore as required in the current manual of survey instructions of the United States Department of the Interior, Bureau of Land Management or by a decree of a court of law. Furthermore, that the corner points mentioned in lines 3, 4 and 5 above were, in a field survey on 19, found, recovered, restored, established or re-established as expressed below and in conformance with the rules of the Michigan State Board of Registration for Land Surveyors or, by a Decree of a Court of law:

A. Description of original monument and accessories and/or subsequent restoration:

Original monument and accessories obliterated.

B. Description of corner evidence found and/or method applied in restoring or re-establishing corner:

A 1/2 inch iron rod was found in the centerline of the two section line roads (Meridian Road and Germany Road).

C. Description of monument for corner and accessories established to perpetuate locating the position of the corner: The 1/2 inch iron rod found at the NW. corner was left in position with the following witnesses;

PK. nail in the N. side of a Utility pole N81°23'W 48.58 feet.
PK. nail in the N. side of a 36 inch Oak S39°37'W 50.18 feet.
Spike in the N. side of a 44 inch Oak S66°19'E 58.53 feet.
The bearing of the section line south of the corner is S0°17'W.
The bearing of the section line east of the corner is N89°42'E.

SIGNED BY James E. Stephens DATE May 5, 1972

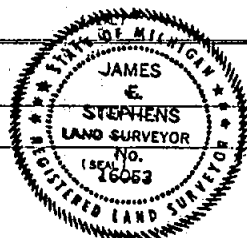
SURVEYOR'S MICHIGAN REGISTRATION NO. 16053

FOR STATE AND UNITED STATES AGENCIES:

SIGNED BY _____ DATE _____

APPROVED AND SIGNED BY _____ DATE _____

SURVEYOR'S MICHIGAN REGISTRATION NO. _____



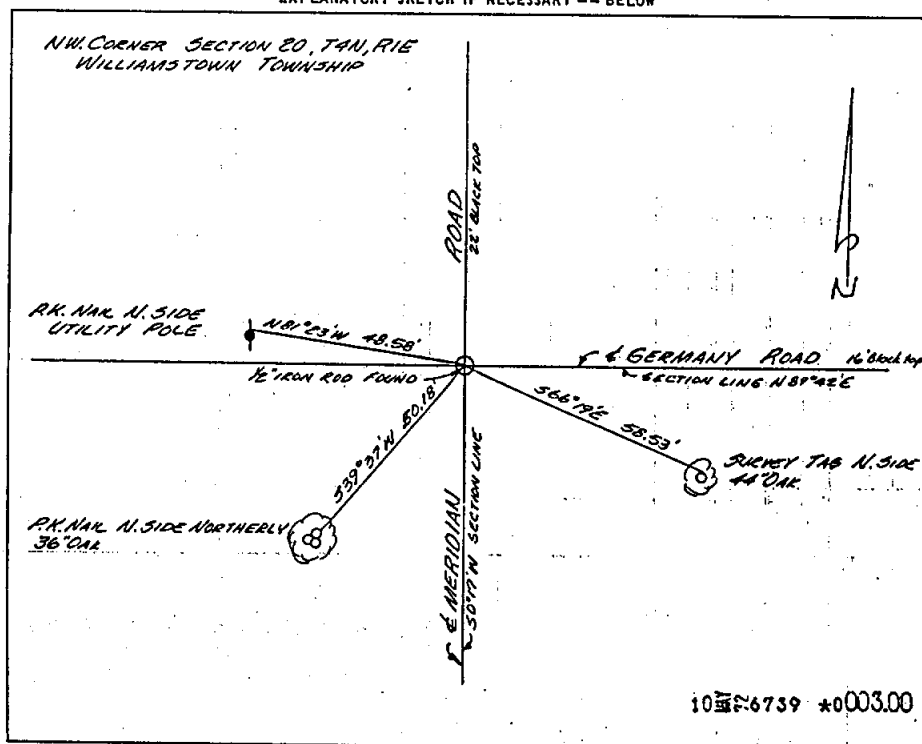
FOR PUBLIC LAND SURVEY CORNERS IN THE
T. 4N, R. 1E (MENTIONED OVER)

[illegible]

FOR PROPERTY CONTROLLING AND MISC.
PROPERTY CORNERS WITHIN THE SECTION
(MENTIONED OVER AND EXCLUDE LOT CORNER)

1	2	3	4
5	6	7	8
9	10	11	12
13	14	15	16

- EXPLANATORY SKETCH IF NECESSARY -- BELOW



LAND CORNER RECORDATION CERTIFICATE

FILING REQUIREMENT OF ACT 74, MICH. P.A. 1970

W 1/4 CORNER SECTION 20, T4N, R1E, WILLIAMSTOWN TWP, INGHAM COUNTY

1 PG 495

FOR CORNERS OF:-	LOCATED IN:-	CORNER CODE NUMBER
1. PUBLIC LAND SURVEY	T. <u>4</u> N. S. R. <u>1</u> E. W.	<u>C-8</u>
2. PROPERTY CONTROLLING IN SECTION	T. _____ N. S. R. _____ E. W.	
3. MISCELLANEOUS PROPERTY IN SECTION	T. _____ N. S. R. _____ E. W.	
4. LOT NO. _____, RECORDED PLAT _____		
5. PRIVATE CLAIMS _____		

FILED

MAY 10 10 20 AM '72

REGISTER OF DEEDS
Miss Bill Humphrey
INGHAM COUNTY, MICH.

REGISTER OF DEEDS STAMP AND
FILING NUMBER

I, James E. Stephens do hereby certify that under requirements of P.A. 74, Michigan P.A. of 1970, the corner points mentioned in lines 1 and 2 above (identified with circles on index code diagram-over) were, in a field survey on March 24, 1972, established, re-established, monumented, re-monumented, recovered or restored as expressed below and in conformance with regulations and rules therefore as required in the current manual of survey instructions of the United States Department of the Interior, Bureau of Land Management or by a decree of a court of law. Furthermore, that the corner points mentioned in lines 3, 4 and 5 above were, in a field survey on 19, found, recovered, restored, established or re-established as expressed below and in conformance with the rules of the Michigan State Board of Registration for Land Surveyors or, by a Decree of a Court of law:

A. Description of original monument and accessories and/or subsequent restoration:
Original monument and accessories obliterated.

B. Description of corner evidence found and/or method applied in restoring or re-establishing corner:
A PK. nail was found in the centerline of the section line road (Meridian Road) which was verified with previous surveys .

C. Description of monument for corner and accessories established to perpetuate locating the position of the corner:
The PK. nail found at the W1/4 corner was left in position with the following witnesses;

Survey tag in the S. side of a 20 inch Oak N15°30'W 110.47 feet.
Survey tag in the N. side of a 20 inch Willow S86°36'W 27.23 feet.
Survey tag in the N. side of a 42 inch Oak S44°21'E 47.37 feet.
The bearing of the section line north of the corner is N0°17'E.
The bearing of the section line south of the corner is SOUTH.

SIGNED BY James E. Stephens DATE May 5, 1972

SURVEYOR'S MICHIGAN REGISTRATION NO. 16053

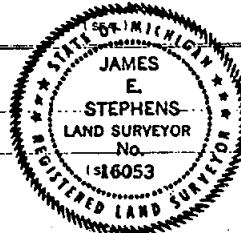
FOR STATE AND UNITED STATES AGENCIES:

SIGNED BY _____ DATE _____

CHIEF OF SURVEY PARTY

APPROVED AND SIGNED BY _____ DATE _____

MICHIGAN REGISTERED LAND SURVEYOR



SURVEYOR'S MICHIGAN REGISTRATION NO. _____

CORNER NUMBERING CODE DIAGRAMS FOR IDENTIFYING LAND CORNER RECORDATIONS AND INDEXING

FOR PUBLIC LAND SURVEY CORNERS IN THE
T. 4N, R. 1E (MENTIONED OVER)

1	A	B	C	D	E	F	G	H	I	J	K	L	M
2	6		5		4		3		2		1		
3													
4	7		8		9		10		11		12		
5													
6	18		17		16		15		14		13		
7													
8	19	●	20		21		22		23		24		
9													
10	30		29		28		27		26		25		
11													
12	31		32		33		34		35		36		
13													

Apply letter prefix for corner points encircled above
for identifying corner recordation numbers over.

FOR PROPERTY CONTROLLING AND MISC.
PROPERTY CORNERS WITHIN THE SECTION
(MENTIONED OVER AND EXCLUDE LOT CORNER)

	1		2	
3	4	5	6	
	8		9	
10	11	12	13	
	15		16	

LAND CORNER RECORDATION CERTIFICATE

FILING REQUIREMENT OF ACT 74, MICH. P.A. 1970

SW. CORNER SECTION 20, T4N, R1E, WILLIAMSTOWN TWP, LEBER
INGHAM COUNTY

1 PG 491

FOR CORNERS OF -	LOCATED IN -	CORNER CODE NUMBER
1. PUBLIC LAND SURVEY	T. 4 N. R. 1 E.	C-9
2. PROPERTY CONTROLLING IN SECTION	T. S. R. E.	
3. MISCELLANEOUS PROPERTY IN SECTION	T. S. R. E.	
4. LOT NO. _____, RECORDED PLAT _____		
5. PRIVATE CLAIMS _____		

FILED

MAY 10 10 20 AM '72
REGISTER OF DEEDS
Mia Bill Humphrey
INGHAM COUNTY, MICH.

REGISTER OF DEEDS STAMP AND
FILING NUMBER

I, James E. Stephens do hereby certify that under requirements of P.A. 74, Michigan P.A. of 1970, the corner points mentioned in lines 1 and 2 above (identified with circles on index code diagram - over) were, in a field survey on March 24, 1972, established, re-established, monumented, re-monumented, recovered or restored as expressed below and in conformance with regulations and rules therefore as required in the current manual of survey instructions of the United States Department of the Interior, Bureau of Land Management or by a decree of a court of law. Furthermore, that the corner points mentioned in lines 3, 4 and 5 above were, in a field survey on 19, found, recovered, restored, established or re-established as expressed below and in conformance with the rules of the Michigan State Board of Registration for Land Surveyors or, by a Decree of a Court of law:

A. Description of original monument and accessories and/or subsequent restoration:
Original monument and accessories obliterated.

B. Description of corner evidence found and/or method applied in restoring or re-establishing corner:
A 1/2 inch iron rod was found in the centerline of the two section line roads (Sherwood Road and Meridian Road).

C. Description of monument for corner and accessories established to perpetuate locating the position of the corner:
The 1/2 inch iron rod found at the SW. corner was left in position with the following witnesses;

16p spike in the NW. side of a 36 inch Oak N31°50'E 52.38 feet.
16p spike in the NE. side of a 30 inch Oak S71°13'E 79.70 feet.
16p spike in the E. side of a 36 inch Oak S34°17'W 84.69 feet.
The bearing of the section line north of the corner is NORTH.

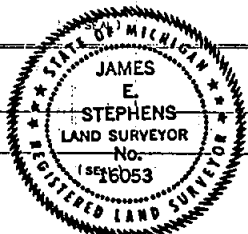
SIGNED BY James E. Stephens DATE May 5, 1972

SURVEYOR'S MICHIGAN REGISTRATION NO. 16053

FOR STATE AND UNITED STATES AGENCIES:

SIGNED BY _____ DATE _____
CHIEF OF SURVEY PARTY

APPROVED AND SIGNED BY _____ DATE _____
MICHIGAN REGISTERED LAND SURVEYOR



246

SURVEYOR'S MICHIGAN REGISTRATION NO. _____

Form No. MLM736
DOUBLEDAY BROS. & CO., KALAMAZOO, MICH.

FORM APPROVED BY MICHIGAN STATE BOARD OF REGISTRATION, JAN. 28, 1971
DISTRIBUTED BY MICHIGAN SOCIETY OF REGISTERED LAND SURVEYORS

CORNER NUMBERING CODE DIAGRAMS FOR IDENTIFYING LAND CORNER RECORDATIONS AND INDEXING

FOR PUBLIC LAND SURVEY CORNERS IN THE
T. 4N, R. 1E (MENTIONED OVER)

	A	B	C	D	E	F	G	H	I	J	K	L	M
2	6		5		4		3		2		1		
3													
4	7		8		9		10		11		12		
5													
6	18		17		16		15		14		13		
7													
8	19		20		21		22		23		24		
9													
10	30		29		28		27		26		25		
11													
12	31		32		33		34		35		36		
13													

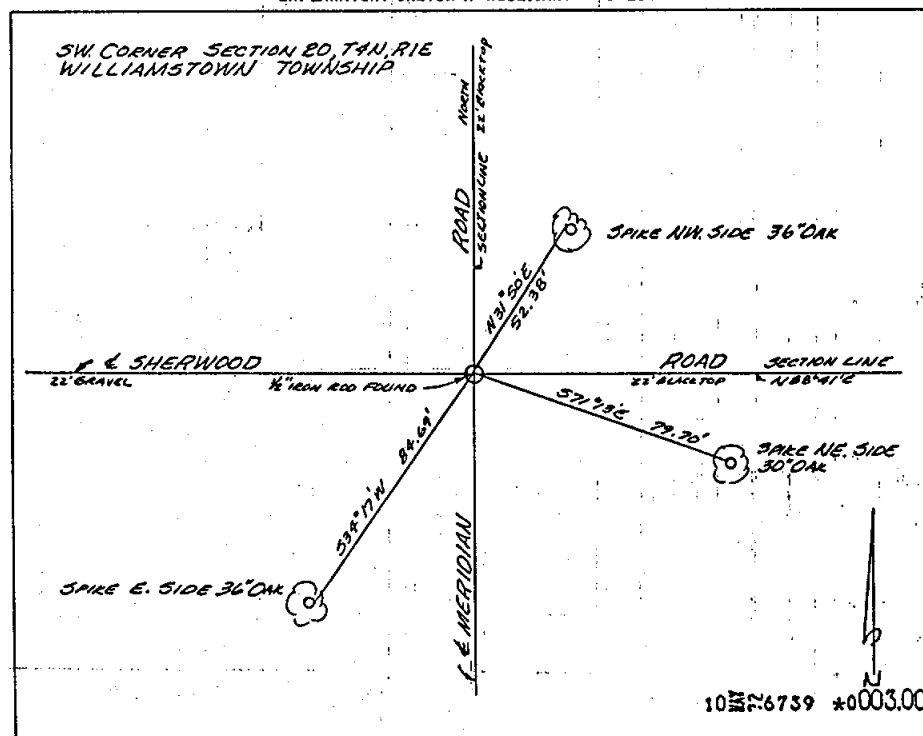
Apply letter prefix for corner points encircled above for identifying corner recordation numbers over.

FOR PROPERTY CONTROLLING AND MISC.
PROPERTY CORNERS WITHIN THE SECTION
(MENTIONED OVER AND EXCLUDE LOT CORNER)

	1	2
3	4	5
6	8	9
10	11	12
13	14	15
16		

1. Above coded numbers are positioned on 1/16 fractional lines of the section.
2. Township corner code numbers shall be applied to corners of above typical section not numbered.
3. Miscellaneous property corners within a section, located at points other than numbered above, shall be referenced to at least two of above corner code numbers.
4. Private claim corners to be tied to rectangular land corners if possible - sketch required below.

EXPLANATORY SKETCH IF NECESSARY -- BELOW



LAND CORNER RECORDATION CERTIFICATE^P
FILING REQUIREMENT OF ACT 74, MICH. P.A. 1970

FOR CORNERS OF:-	LOCATED IN:-	CORNER CODE NUMBER
1. PUBLIC LAND SURVEY <u>24</u> T. <u>4</u> N. <u>1</u> R. <u>1</u> W.		<u>L-7</u>
2. PROPERTY CONTROLLING IN SECTION _____ T. _____ N. _____ S. _____ R. _____ E. _____ W.		
3. MISCELLANEOUS PROPERTY IN SECTION _____ T. _____ N. _____ S. _____ R. _____ E. _____ W.		
4. LOT NO. _____, RECORDED PLAT _____		
5. PRIVATE CLAIMS _____		

LIBER 2 PG 221

FILED

NOV 28 10 52 AM '72

REGISTER OF DEEDS

Paul M. Luria
INGHAM COUNTY, MICH.

REGISTER OF DEEDS STAMP AND
FILING NUMBER

I, Ron Helsel do hereby certify that under requirements of P.A. 74, Michigan P.A. of 1970, the corner points mentioned in lines 1 and 2 above (identified with circles on index code diagram—over) were, in a field survey on Sept 15, 1972, established, re-established, monumented, re-monumented, recovered or restored as expressed below and in conformance with regulations and rules therefore as required in the current manual of survey instructions of the United States Department of the Interior, Bureau of Land Management or by a decree of a court of law. Furthermore, that the corner points mentioned in lines 3, 4 and 5 above were, in a field survey on _____ 19____, found, recovered, restored, established or re-established as expressed below and in conformance with the rules of the Michigan State Board of Registration for Land Surveyors or, by a Decree of a Court of law:

A. Description of original monument and accessories and/or subsequent restoration:

None - Lost Corner located in swamp and under water

B. Description of corner evidence found and/or method applied in restoring or re-establishing corner:

Found burn scarred wood anchor post broken off at ground level at the intersection of north-south & east-west fences. Supported by measurements from cardinal directions. Set 1" pipe in center of rotted remains of said wood post & witnessed.

C. Description of monument for corner and accessories established to perpetuate locating the position of the corner:

S-45° E	33.55'	Nail & tag	15" Willow
S-52° E	40.40'	" "	10" Willow
S-05° E	63.91'	" "	10" Maple
North	48.80'	Concrete Monument	N.W. Corner

Country Estates Subdivision

SIGNED BY Ron Helsel

DATE Sept 15, 1972

SURVEYOR'S MICHIGAN REGISTRATION NO. 18994

FOR STATE AND UNITED STATES AGENCIES:

SIGNED BY _____

CHIEF OF SURVEY PARTY

DATE _____

APPROVED AND SIGNED BY _____

MICHIGAN REGISTERED LAND SURVEYOR

DATE _____

(SEAL)

SURVEYOR'S MICHIGAN REGISTRATION NO. _____

434

Form No. MLM735
DOUBLEDAY BROS. & CO., KALAMAZOO, MICH.

FORM APPROVED BY MICHIGAN STATE BOARD OF REGISTRATION, JAN. 28, 1971
DISTRIBUTED BY MICHIGAN SOCIETY OF REGISTERED LAND SURVEYORS

LAND CORNER RECORDATION CERTIFICATE
FILING REQUIREMENT OF ACT 74, MICH. P.A. 1970

FOR CORNERS OF:-	LOCATED IN:-	CORNER CODE NUMBER
1. PUBLIC LAND SURVEY _____ T. _____ N. _____ S. _____ R. _____ E. _____ W. _____		
2. PROPERTY CONTROLLING IN SECTION <u>24</u> T. <u>4</u> N. _____ S. _____ R. <u>1</u> E. _____ W. _____		<u>4</u>
3. MISCELLANEOUS PROPERTY IN SECTION _____ T. _____ N. _____ S. _____ R. _____ E. _____ W. _____		
4. LOT NO. _____, RECORDED PLAT _____		
5. PRIVATE CLAIMS _____		

LIBER 2 PG 237

FILED

Nov 28 10 53 AM '72

REGISTER OF DEEDS

Carol M. Lewis
INGHAM COUNTY, MICH.

REGISTER OF DEEDS STAMP AND
FILING NUMBER

I, Ron Helsel do hereby certify that under requirements of P.A. 74, Michigan P.A. of 1970, the corner points mentioned in lines 1 and 2 above (identified with circles on index code diagram-over) were, in a field survey on Sept 15, 1972, established, re-established, monumented, re-monumented, recovered or restored as expressed below and in conformance with regulations and rules therefore as required in the current manual of survey instructions of the United States Department of the Interior, Bureau of Land Management or by a decree of a court of law. Furthermore, that the corner points mentioned in lines 3, 4 and 5 above were, in a field survey on 19, found, recovered, restored, established or re-established as expressed below and in conformance with the rules of the Michigan State Board of Registration for Land Surveyors or, by a Decree of a Court of law:

A. Description of original monument and accessories and/or subsequent restoration:

No records of being set

B. Description of corner evidence found and/or method applied in restoring or re-establishing corner:

Found 1" square Iron bar at intersection of E Newman road and 3.0' east of E Vanatta road. Supported by measurements from north and east.

C. Description of monument for corner and accessories established to perpetuate locating the position of the corner:

1" Square iron bar 4" below gravel

N 45° E 43.71' street name sign

N 70° W 35.49' Nail & tag 20" Maple

S 81° W 34.87' Nail & tag 15" Oak

SIGNED BY Ron Helsel

DATE Sept 27, 1972

SURVEYOR'S MICHIGAN REGISTRATION NO. 18994

(SEAL)

FOR STATE AND UNITED STATES AGENCIES:

SIGNED BY _____

CHIEF OF SURVEY PARTY

DATE _____

APPROVED AND SIGNED BY _____

MICHIGAN REGISTERED LAND SURVEYOR

DATE _____

(SEAL)

SURVEYOR'S MICHIGAN REGISTRATION NO. _____

442

Form No. ML738
DOUGLASS BROS. & CO., KALAMAZOO, MICH.

FORM APPROVED BY MICHIGAN STATE BOARD OF REGISTRATION, JAN. 28, 1971
DISTRIBUTED BY MICHIGAN SOCIETY OF REGISTERED LAND SURVEYORS

LAND CORNER RECORDATION CERTIFICATE FILING REQUIREMENT OF ACT 74, MICH. P.A.1970

FOR CORNERS OF:-	LOCATED IN:-	CORNER CODE NUMBER
1. PUBLIC LAND SURVEY _____ T. _____ N. _____ S. _____ R. _____ E. _____ W. _____		
2. PROPERTY CONTROLLING IN SECTION <u>24</u> T. <u>4</u> N. _____ S. _____ R. <u>1</u> E. _____ W. _____		<u>1</u>
3. MISCELLANEOUS PROPERTY IN SECTION _____ T. _____ N. _____ S. _____ R. _____ E. _____ W. _____		
4. LOT NO. _____, RECORDED PLAT _____		
5. PRIVATE CLAIMS _____		

LIBER 2 PG 239
FILED

Nov 28 10 53 AM '72

REGISTER OF DEEDS
Paul M. Lurie
INGHAM COUNTY, MICH.
REGISTER OF DEEDS STAMP AND
FILING NUMBER

1. Ron Helsel do hereby certify that under requirements of P.A. 74, Michigan P.A. of 1970, the corner points mentioned in lines 1 and 2 above (identified with circles on index code diagram-over) were, in a field survey on Sept 15, 1972, established, re-established, monumented, re-monumented, recovered or restored as expressed below and in conformance with regulations and rules therefore as required in the current manual of survey instructions of the United States Department of the Interior, Bureau of Land Management or by a decree of a court of law. Furthermore, that the corner points mentioned in lines 3, 4 and 5 above were, in a field survey on _____ 19____, found, recovered, restored, established or re-established as expressed below and in conformance with the rules of the Michigan State Board of Registration for Land Surveyors or, by a Decree of a Court of law:

A. Description of original monument and accessories and/or subsequent restoration:
None - No records

B. Description of corner evidence found and/or method applied in restoring or re-establishing corner:
Found railroad spike at intersection of north line Sec. 24 and 2.0' east of E Vanotla Rd. Supported by fence rows and field measurements from cardinal directions. Used R.R. spike and witnessed.

C. Description of monument for corner and accessories established to perpetuate locating the position of the corner:
West 30.83' nail & tag 8" wood Anchor post
S 35° E 57.37' " " 8" Willow
S 10° E 136.35' " " 18" Willow

SIGNED BY Ron Helsel DATE Sept 27, 1972
SURVEYOR'S MICHIGAN REGISTRATION NO. 18994 (SEAL)

FOR STATE AND UNITED STATES AGENCIES:
SIGNED BY _____ DATE _____
APPROVED AND SIGNED BY _____ DATE _____
MICHIGAN REGISTERED LAND SURVEYOR (SEAL)

LAND CORNER RECORDATION CERTIFICATE

FILING REQUIREMENT OF ACT 74, MICH. P.A.1970

LIBER 2 PG 465

FILED

FOR CORNERS OF--	LOCATED IN--	CORNER CODE NUMBER
1. PUBLIC LAND SURVEY	T. 4 N. R. 1 W.	M-8
2. PROPERTY CONTROLLING IN SECTION	T. S. R. E. W.	
3. MISCELLANEOUS PROPERTY IN SECTION	T. S. R. E. W.	
4. LOT NO.	RECORDED PLAT	
5. PRIVATE CLAIMS		

JUL 10 1 57 PM '73
REGISTER OF DEEDS
Earl M. Lewis
INGHAM COUNTY, MICH.

REGISTER OF DEEDS STAMP AND FILING NUMBER

I, William A. Johnson do hereby certify that under requirements of P.A. 74, Michigan P.A. of 1970, the corner points mentioned in lines 1 and 2 above (identified with circles on index code diagram-over) were, in a field survey on June 4 1973, established, re-established, monumented, re-monumented, recovered or restored as expressed below and in conformance with regulations and rules therefore as required in the current manual of survey instructions of the United States Department of the Interior, Bureau of Land Management or by a decree of a court of law. Furthermore, that the corner points mentioned in lines 3, 4 and 5 above were, in a field survey on 19, found, recovered, restored, established or re-established as expressed below and in conformance with the rules of the Michigan State Board of Registration for Land Surveyors or, by a Decree of a Court of law:

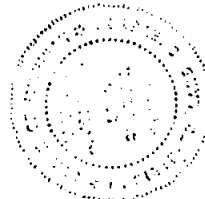
A. Description of original monument and accessories and/or subsequent restoration:
Original monument obliterated.

B. Description of corner evidence found and/or method applied in restoring or re-establishing corner:

Corner re-established based on an obliterated corner. New corner established on the meridian line between the SW corner of Section 20, T4N, R1E and the West 1/4 corner of Section 20, T4N, R1E, at record distance from the Northeast corner of Sherwood Hills Subdivision.

C. Description of monument for corner and accessories established to perpetuate locating the position of the corner:

Corner Monument
1/2" Iron reinforcing rod set flush with pavement surface.
Witnesses: PK nail in N.E. side 12" Ash N 50° W 38.61'
PK nail in W. side 18" Willow N 15° E 98.22'
PK nail in E. side 24" Oak S 25° W 81.17'
PK nail in N. side 20" Willow S 40° E 64.31'



SIGNED BY William A. Johnson DATE 6-8-73

SURVEYOR'S MICHIGAN REGISTRATION NO. 14764 (SEAL)

FOR STATE AND UNITED STATES AGENCIES:

SIGNED BY _____ DATE _____
CHIEF OF SURVEY PARTY

APPROVED AND SIGNED BY _____ DATE _____
MICHIGAN REGISTERED LAND SURVEYOR (SEAL)

SURVEYOR'S MICHIGAN REGISTRATION NO. _____

LAND CORNER RECORDATION CERTIFICATE

FILING REQUIREMENT OF ACT 74, MICH. P.A. 1970

LIBER 3 PG 59

E 1/4 Corner of Section 23, T4N, R1W, Meridian Township, Ingham County, Michigan

FOR CORNERS OF:-	LOCATED IN:-	CORNER CODE NUMBER
1. PUBLIC LAND SURVEY <u>23</u>	T. <u>4</u> N. <u>1</u> R. <u>1</u> W.	<u>K-8</u>
2. PROPERTY CONTROLLING IN SECTION _____	T. _____ N. _____ E. _____ S. _____ R. _____ W. _____	_____
3. MISCELLANEOUS PROPERTY IN SECTION _____	T. _____ N. _____ E. _____ S. _____ R. _____ W. _____	_____
4. LOT NO. _____, RECORDED PLAT _____		
5. PRIVATE CLAIMS _____		

MAR 27 10 39 AM '74
REGISTER OF DEEDS
Paul M. Lewis
INGHAM COUNTY, MICH.

REGISTER OF DEEDS STAMP AND FILING NUMBER

I, Ron Hessel do hereby certify that under requirements of P.A. 74, Michigan P.A. of 1970, the corner points mentioned in lines 1 and 2 above (identified with circles on index code diagram-over) were, in a field survey on March 7 19 74, established, re-established, monumented, re-monumented, recovered or restored as expressed below and in conformance with regulations and rules therefore as required in the current manual of survey instructions of the United States Department of the Interior, Bureau of Land Management or by a decree of a court of law. Furthermore, that the corner points mentioned in lines 3, 4 and 5 above were, in a field survey on _____ 19____, found, recovered, restored, established or re-established as expressed below and in conformance with the rules of the Michigan State Board of Registration for Land Surveyors or, by a Decree of a Court of law:

A. Description of original monument and accessories and/or subsequent restoration:
Original Corner & Witnesses Lost.

B. Description of corner evidence found and/or method applied in restoring or re-establishing corner:
Found 1" iron bar in N-S fence, near anchor post, as called for by C.E. Smith, April, 1967. Used the 1" iron bar and re-witnessed.

C. Description of monument for corner and accessories established to perpetuate locating the position of the corner:
1" iron bar
N & T - 6" Poplar N80°W 96.5'
N & T - 8" Wild Cherry S85°W 89.3'
North, 4.5' to E-W Gate

SIGNED BY Ron Hessel DATE 3-7-74

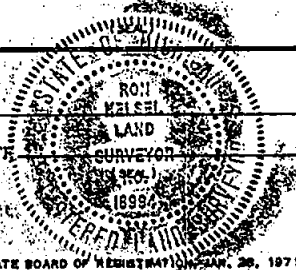
SURVEYOR'S MICHIGAN REGISTRATION NO. 18994

FOR STATE AND UNITED STATES AGENCIES:

SIGNED BY _____ DATE _____

APPROVED AND SIGNED BY _____ DATE _____

SURVEYOR'S MICHIGAN REGISTRATION NO. _____



LAND CORNER RECORDATION CERTIFICATE
FILING REQUIREMENT OF ACT 74, MICH. P.A.1970

LIBER

3 PG 369

FOR CORNERS OF--	Sec.	LOCATED IN--	CORNER CODE NUMBER
1. PUBLIC LAND SURVEY	14	T. 4N. S. R. 1W. E. W.	J7 K7 J6
2. PROPERTY CONTROLLING IN SECTION		T. N. S. R. E. W.	
3. MISCELLANEOUS PROPERTY IN SECTION		T. N. S. R. E. W.	
4. LOT NO.		RECORDED PLAT	
5. PRIVATE CLAIMS			

FILED

APR 23 10 35 AM '75

REGISTER OF DEEDS

Paul M. Lewis
INGHAM COUNTY, MICH.

REGISTER OF DEEDS STAMP AND
FILING NUMBER

I, Marvin F. Fouty do hereby certify that under requirements of P.A. 74, Michigan P.A. of 1970, the corner points mentioned in lines 1 and 2 above (identified with circles on index code diagram-over) were, in a field survey on March 21 1975, established, re-established, monumented, re-monumented, recovered or restored as expressed below and in conformance with regulations and rules therefore as required in the current manual of survey instructions of the United States Department of the Interior, Bureau of Land Management or by a decree of a court of law. Furthermore, that the corner points mentioned in lines 3, 4 and 5 above were, in a field survey on 19___, found, recovered, restored, established or re-established as expressed below and in conformance with the rules of the Michigan State Board of Registration for Land Surveyors or, by a Decree of a Court of law:

A. Description of original monument and accessories and/or subsequent restoration:

- J7 Original monument and accessories obliterated.
K7 Original monument and accessories obliterated.
J6 Corner not set in original government survey.

B. Description of corner evidence found and/or method applied in restoring or re-establishing corner:

- J7 Found 1 1/4" iron pipe from witnesses supplied by Ingham County Road Commission and Consumers Power Co.
K7 Set 1/2" bar and cap from witnesses supplied by Consumers Power Co. Corner fits adjacent deed lines established by Consumers Power Co.
J6 Found 3/4" bar from witnesses supplied by Consumers Power Co. and two local Registered Land Surveyors.

Researched Records of eight area Registered Land Surveyors.

C. Description of monument for corner and accessories established to perpetuate locating the position of the corner:

- J7 S 1/4 Corner Section 14, T4N, R1W 1 1/4" iron pipe
Nail and Tag in 18" Oak East 19.78'
Nail and Tag in 36" Oak West 26.60'
Nail and Tag in 24" Oak NNE 88.24'
K7 SE Corner Section 14, T4N, R1W 1/2" bar and cap
Nail and Tag West side Anchor Post North 2.58'
Nail and Tag South side 26" Cherry East 53.56'
Nail and Tag South side 16" Oak WSW 109.68'
J6 Center Corner, Section 14, T4N, R1W 3/4" bar
Nail and Tag in South side 30" cottonwood WNW 123.26' Street sign post SW 37.24'
Nail and Tag in NW side Fence post NE 74.43'

SIGNED BY Marvin F. Fouty DATE April 1

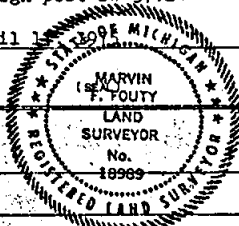
SURVEYOR'S MICHIGAN REGISTRATION NO. 18989

FOR STATE AND UNITED STATES AGENCIES:

SIGNED BY _____ DATE _____
CHIEF OF SURVEY PARTY

APPROVED AND SIGNED BY _____ DATE _____
MICHIGAN REGISTERED LAND SURVEYOR

SURVEYOR'S MICHIGAN REGISTRATION NO. _____



LAND CORNER RECORDATION CERTIFICATE

FILING REQUIREMENT OF ACT 74, MICH. P.A. 1970

LIBER 3 PG 538

FILED

FEB 4 4 01 PM '76

REGISTER OF DEEDS

Carol M. Lewis
INGHAM COUNTY, MICH.

REGISTER OF DEEDS STAMP AND
FILING NUMBER

FOR CORNERS OF--	LOCATED IN--	CORNER CODE NUMBER
1. PUBLIC LAND SURVEY SEC. 24 T. 4N N. S. R. 1W E. W.		M-7, L-8
2. PROPERTY CONTROL- SEC. 24 T. 4N N. S. R. 1W E. W.		5, 7
3. MISCELLANEOUS PROPERTY IN SECTION T. N. S. R. E. W.		
4. LOT NO. RECORDED PLAT		
5. PRIVATE CLAIMS		

I, Marvin F. Fouty, do hereby certify that under requirements of P.A. 74, Michigan P.A. of 1970, the corner points mentioned in lines 1 and 2 above were, in a field survey on Sept. 18, 1975, established, re-established, monumented, re-monumented, recovered or restored as expressed below and in conformance with regulations and rules therefore as required in the current manual of survey instructions of the United States Department of the Interior, Bureau of Land Management or by a decree of a court of law. Furthermore, that the corner points mentioned in lines 3, 4 and 5 above were, in a field survey on 1975, found, recovered, restored, established or re-established as expressed below and in conformance with the rules of the Michigan State Board of Registration for Land Surveyors or, by a Decree of a Court of law:

A. Description of original monument and accessories and/or subsequent restoration:
M-7 Original Monument and Accessories obliterated.

L-8 Corner not set in original Government Survey

B. Description of corner evidence found and/or method applied in restoring or re-establishing corner:

M-7 Found 1/2" bar in center of Meridian Road from plat of Countryside Estates as recorded in Liber 27 of Plats, Page 19

L-8 Set 1/2" bar and cap at intersection of N-S and E-W 1/4 lines.

5 Set 1/2" bar on line between NE Corner Section 24, T4N, R1W and W1/4 Corner Section 20, T4N, R1E and midway between NE Corner Section 24, T4N, R1W and E 1/4 Corner Section 24, T4N, R1W

7 Set 1/2" bar and cap midway and on line between N 1/4 Corner Section 24, T4N, R1W, and Center of Section 24, T4N, R1W

C. Description of monument for corner and accessories established to perpetuate locating the position of the corner:

M-7 NE Cor. Section 24, T4N, R1W, 1/2" Bar
Tag and Nail in NE side 18" Oak NE 38.35'
Tag and Nail in NW side 30" Cottonwood NW 82.58'
Tag and Nail in S side 18" Maple ESE 80.93'
L-8 Center Section 24, T4N, R1W 1/2" Bar & Cap.
Tag and Nail in E side 16" Oak North 26.35'
Tag and Nail in N side of 10" Maple SW 6.35.
Tag and Nail in W side 10" Poplar SSE 41.57'

7 1/2" bar in Williamston Road
Tag and Nail NE side Util. Pole NW 64.06'
Tag and Nail S side 24" Maple ENE 26.99'
Tag and Nail S side 30" Oak WSW 39.28'
5 1/2" Bar and Cap center Newman Road
Tag and Nail E side Walnut North 24.46'
Tag and Nail W side 26" Oak SE 41.36'
Tag and Nail E side 16" Ash SW 28.55'

SIGNED BY Marvin F. Fouty DATE January 26, 1976

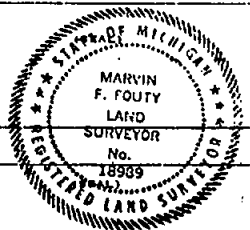
SURVEYOR'S MICHIGAN REGISTRATION NO. 18989

FOR STATE AND UNITED STATES AGENCIES:

SIGNED BY _____ DATE _____

APPROVED AND SIGNED BY _____ DATE _____

SURVEYOR'S MICHIGAN REGISTRATION NO. _____



FORM APPROVED BY MICHIGAN STATE BOARD OF REGISTRATION, JAN. 28, 1971
REVISED MAY 14, 1975

LAND CORNER RECORDATION CERTIFICATE

FILING REQUIREMENT OF ACT 74, MICH. P.A. 1970

FOR CORNERS OF:-	LOCATED IN:-	CORNER CODE NUMBER
1. PUBLIC LAND SURVEY <u>X</u>	T. <u>4</u> N. R. <u>1</u> E.	<u>C-10</u>
2. PROPERTY CONTROLLING IN SECTION	T. <u> </u> N. S. R. <u> </u> E.	
3. MISCELLANEOUS PROPERTY IN SECTION	T. <u> </u> N. S. R. <u> </u> E.	
4. LOT NO. <u> </u> , RECORDED PLAT <u> </u>		
5. PRIVATE CLAIMS <u> </u>		

LIBER 4 PG. 26
FILED

APR 21 3 50 PM '77

REGISTER OF DEEDS
Paul Johnson
INGHAM COUNTY, MICH.

REGISTER OF DEEDS STAMP AND FILING NUMBER

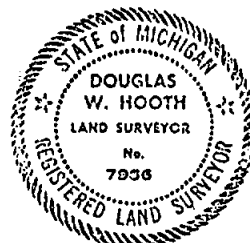
I, Douglas W. Hooth, do hereby certify that under requirements of P.A. 74, Michigan P.A. of 1970, the corner points mentioned in lines 1 and 2 above were, in a field survey on March 15th, 1977, established, re-established, monumented, re-monumented, recovered or restored as expressed below and in conformance with regulations and rules therefore as required in the current manual of survey instructions of the United States Department of the Interior, Bureau of Land Management or by a decree of a court of law. Furthermore, that the corner points mentioned in lines 3, 4 and 5 above were, in a field survey on , 19 , found, recovered, restored, established or re-established as expressed below and in conformance with the rules of the Michigan State Board of Registration for Land Surveyors or, by a Decree of a Court of law:

A. Description of original monument and accessories and/or subsequent restoration:
3/4 inch Pipe as described in 1941 Survey.

B. Description of corner evidence found and/or method applied in restoring or re-establishing corner:
Fits description of H.R. Wilcox in 1941.
Found Witnesses:
North 22.6 Nail in Oak
SW 13 Iron Wood
South 41.3 Twin Oak

C. Description of monument for corner and accessories established to perpetuate locating the position of the corner:
3/4 inch Pipe at ground surface
Witnesses:

S 35° E	2.35'	Steel Fence Post
N 15° E	22.93'	Nail and Tag in 26" Oak
S 75° E	15.74'	Nail and Tag in 10" Maple
S 70° W	12.89'	Nail and Tag in 14" Iron Wood
S 10° W	41.34'	Nail and Tag in 40" Twin Oak



SIGNED BY DATE

SURVEYOR'S MICHIGAN REGISTRATION NO. (SEAL)

FOR STATE AND UNITED STATES AGENCIES:

SIGNED BY *Edwin M. Morse* DATE March 28, 1977

APPROVED AND SIGNED BY *Douglas W. Hooth* DATE 3-29-77
MICHIGAN REGISTERED LAND SURVEYOR
Mich. Dept. of State Hwys. & Trans. (SEAL)

SURVEYOR'S MICHIGAN REGISTRATION NO. 7966

1036

FORM APPROVED BY MICHIGAN STATE BOARD OF REGISTRATION, JAN. 28, 1971
REVISED MAY 14, 1978

MAY PLACE SKETCH ON BACK OR ATTACHED SHEET

LAND CORNER RECORDATION CERTIFICATE
FILING REQUIREMENT OF ACT 74, MICH. P.A.1970

FOR CORNERS OF--	LOCATED IN--	CORNER CODE NUMBER
1. PUBLIC LAND SURVEY <u>24</u> Sec <u>4</u> T. <u>4</u> N. R. <u>1</u> W.		<u>L-9</u>
2. PROPERTY CONTROLLING IN SECTION _____, T. _____ N. S. R. _____ E. W.		
3. MISCELLANEOUS PROPERTY IN SECTION _____, T. _____ N. S. R. _____ E. W.		
4. LOT NO. _____, RECORDED PLAT _____		
5. PRIVATE CLAIMS _____		

Libert 4 PG 113

FILED

Nov 22 2 35 PM '77

REGISTER OF DEEDS
Paula Johnson
INGHAM COUNTY, MICH.

REGISTER OF DEEDS STAMP AND
FILING NUMBER

I, Austin C. Williams, do hereby certify that under requirements of P.A. 74, Michigan P.A. of 1970, the corner points mentioned in lines 1 and 2 above were, in a field survey on Oct. 3, 1987 established, re-established, monumented, re-monumented, recovered or restored as expressed below and in conformance with regulations and rules therefore as required in the current manual of survey instructions of the United States Department of the Interior, Bureau of Land Management or by a decree of a court of law. Furthermore, that the corner points mentioned in lines 3, 4 and 5 above were, in a field survey on _____, 19____, found, recovered, restored, established or re-established as expressed below and in conformance with the rules of the Michigan State Board of Registration for Land Surveyors or, by a Decree of a Court of law:

A. Description of original monument and accessories and/or subsequent restoration:

L-9 Original monument and accessories obliterated

B. Description of corner evidence found and/or method applied in restoring or re-establishing corner:

L-9 Found pointed stone with chiseled cross on top at intersection of North, South and West fence lines.

C. Description of monument for corner and accessories established to perpetuate locating the position of the corner:

L-9 nail & tag in 20" Oak, South-25.00'
nail & tag in 6" Twin Hickory, East-9.83'
nail & tag in 18" Oak, N03°E-26.65'

SIGNED BY Austin C. Williams DATE Nov. 21, 1977

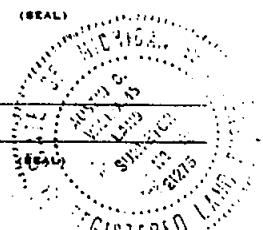
SURVEYOR'S MICHIGAN REGISTRATION NO. 21275

FOR STATE AND UNITED STATES AGENCIES:

SIGNED BY _____ DATE _____

APPROVED AND SIGNED BY _____ DATE _____

SURVEYOR'S MICHIGAN REGISTRATION NO. _____



FORM APPROVED BY MICHIGAN STATE BOARD OF REGISTRATION, JAN. 28, 1971
REVISED MAY 14, 1978

1115

MAY PLACE SKETCH ON BACK OR ATTACHED SHEET

LAND CORNER RECORDATION CERTIFICATE

FILING REQUIREMENT OF ACT 74, MICH. P.A. 1970

N 1/8 corner, SW 1/4 Section 24, T4N, R1W, Meridian Twp. Ingham County

FOR CORNERS OF--	LOCATED IN--	CORNER CODE NUMBER
1. PUBLIC LAND SURVEY _____ T. _____ N. _____ S. _____ R. _____ E. _____ W. _____		
2. PROPERTY CONTROLLING IN SECTION <u>24</u> T. <u>4</u> N. <u>1</u> S. <u>1</u> R. <u>1</u> E. <u>1</u> W. <u>1</u>		8
3. MISCELLANEOUS PROPERTY IN SECTION _____ T. _____ N. _____ S. _____ R. _____ E. _____ W. _____		
4. LOT NO. _____, RECORDED PLAT _____		
5. PRIVATE CLAIMS _____		

LIBER 6 PAGE 221

FILED

AUG 12 10 05 AM '82

REGISTER OF DEEDS

Paula Johnson
INGHAM COUNTY, MICH.

REGISTER OF DEEDS STAMP AND FILING NUMBER

I, Maurice H. Mahieu, do hereby certify that under requirements of P.A. 74, Michigan P.A. of 1970, the corner points mentioned in lines 1 and 2 above were, in a field survey on August 5, 1982, established, re-established, monumented, re-monumented, recovered or restored as expressed below and in conformance with regulations and rules therefore as required in the current manual of survey instructions of the United States Department of the Interior, Bureau of Land Management or by a decree of a court of law. Furthermore, that the corner points mentioned in lines 3, 4 and 5 above were, in a field survey on _____, 19____, found, recovered, restored, established or re-established as expressed below and in conformance with the rules of the Michigan State Board of Registration for Land Surveyors or, by a Decree of a Court of law:

A. Description of original monument and accessories and/or subsequent restoration:

Corner not set in original government survey

B. Description of corner evidence found and/or method applied in restoring or re-establishing corner:

Found 3/4" iron bar as established by other area surveyors.

C. Description of monument for corner and accessories established to perpetuate locating the position of the corner:

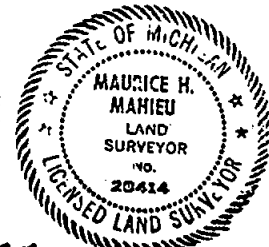
3/4" iron bar witnessed by:

Nail and tag in North side of 6" Ash West 41.07'

Nail and tag in S.W. side of 24" Oak S45°E 46.54'

Nail and tag No. 18989 in S.E. side 22" Twin Poplar N25°E 66.17'

1/2" iron East 32.83'



SIGNED BY Maurice H. Mahieu DATE 8-9-82

SURVEYOR'S MICHIGAN REGISTRATION NO. _____ (SEAL)

FOR STATE AND UNITED STATES AGENCIES:

SIGNED BY _____ DATE _____

APPROVED AND SIGNED BY _____ DATE _____

MICHIGAN REGISTERED LAND SURVEYOR

(SEAL)

SURVEYOR'S MICHIGAN REGISTRATION NO. _____

1969

FORM APPROVED BY MICHIGAN STATE BOARD OF REGISTRATION, JAN. 28, 1971
REVISED MAY 14, 1975

MAY PLACE SKETCH ON BACK OR ATTACHED SHEET

LAND CORNER RECORDATION CERTIFICATE
FILING REQUIREMENT OF ACT 74, MICH. P.A. 1970

South 1/8 corner of SW 1/4, Section 24, T4N, R1W, Meridian Twp., Ingham County

FOR CORNERS OF:-	LOCATED IN:-	CORNER CODE NUMBER
1. PUBLIC LAND SURVEY_____ T. _____ N. _____ E. _____ S. _____ R. _____ W. _____		
2. PROPERTY CONTROLL- ING IN SECTION <u>24</u> T. <u>4</u> N. <u>1</u> E. <u>15</u> S. _____ R. _____ W. _____		
3. MISCELLANEOUS PROPERTY IN SECTION _____ T. _____ N. _____ E. _____ S. _____ R. _____ W. _____		
4. LOT NO. _____, RECORDED PLAT _____		
5. PRIVATE CLAIMS _____		

LIBER 6 PAGE 222

FILED

AUG 12 10 05 AM '82

REGISTER OF DEEDS

Paula Johnson

INGHAM COUNTY, MICH.

REGISTER OF DEEDS STAMP AND
FILING NUMBER

I, Maurice H. Mahieu, do hereby certify that under requirements of P.A. 74, Michigan P.A. of 1970, the corner points mentioned in lines 1 and 2 above were, in a field survey on August 5, 1982, established, re-established, monumented, re-monumented, recovered or restored as expressed below and in conformance with regulations and rules therefore as required in the current manual of survey instructions of the United States Department of the Interior, Bureau of Land Management or by a decree of a court of law. Furthermore, that the corner points mentioned in lines 3, 4 and 5 above were, in a field survey on _____, 19____, found, recovered, restored, established or re-established as expressed below and in conformance with the rules of the Michigan State Board of Registration for Land Surveyors or, by a Decree of a Court of law:

A. Description of original monument and accessories and/or subsequent restoration:

Corner not set in original government survey

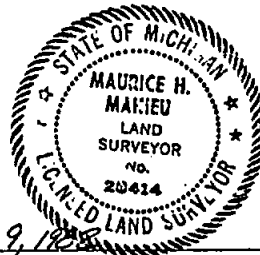
B. Description of corner evidence found and/or method applied in restoring or re-establishing corner:

Found 1/2" iron rod-6" below road surface. Rod used as corner from previous surveys.

C. Description of monument for corner and accessories established to perpetuate locating the position of the corner:

1/2" iron rod witnessed by:

Nail and tag in S side of utility pole N45°E 37.91'
Nail and tag in N side of utility pole N70°W 83.89'
Nail and tag in N side of 28" Maple West 22.92'
Nail and tag in E side of 24" Oak S15°W 120.39'



SIGNED BY Maurice H. Mahieu DATE Aug 9, 1982

SURVEYOR'S MICHIGAN REGISTRATION NO. _____ (SEAL)

FOR STATE AND UNITED STATES AGENCIES:

SIGNED BY _____ DATE _____
CHIEF OF SURVEY PARTY

APPROVED AND SIGNED BY _____ DATE _____
MICHIGAN REGISTERED LAND SURVEYOR (SEAL)

SURVEYOR'S MICHIGAN REGISTRATION NO. _____

1970

FORM APPROVED BY MICHIGAN STATE BOARD OF REGISTRATION, JAN. 26, 1971
REVISED MAY 14, 1975

MAY PLACE SKETCH ON BACK OR ATTACHED SHEET

LAND CORNER RECORDATION CERTIFICATE
Filing Requirement of Act 74, Mich. P.A. 1970

LBER 6 353

For corners in

Ingham
County

Located In:

Corner Code: #1

FILED

JAN 5 8 02 AM '88

REGISTER OF DEEDS

Register of Deeds Stamp & File Number
INGHAM COUNTY, MICH.

- | | | |
|-----------------------------------|---------------|-----|
| 1 Public Land Survey | T 4N R 1W | M-9 |
| | T R | |
| | T R | |
| | T R | |
| 2 Property Controlling in Section | S T R | |
| | S T R | |
| 3 Miscellaneous Property in Sec. | S T R | |
| | S T R | |
| 4 Lot No. | Recorded Plat | |
| 5 Private Claims | | |

I, Larry A. Bryan, in a field survey on July 17, 19 87
do hereby certify that under requirements of P.A. 74, Michigan P.A. of 1970, the corner points mentioned in lines 1 and 2 above were in conformance with regulations and rules therefore as required in the current manual of survey instructions of the United States Department of the Interior, Bureau of Land Management or by a decree of a Court of Law and/or that the corner points mentioned in lines 3, 4 and 5 above were in conformance with the rules of the Michigan Board of Land Surveyors or by a Decree of a Court of Law, established, re-established, monumented, re-monumented, recovered, found as expressed below

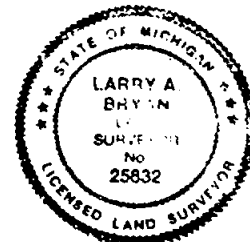
NOTE: Not more than 4 corners, all in the same town and range, may be recorded on this certificate.

A. Description of original monument and accessories and/or subsequent restoration.

M-9 Original monument and accessories obliterated

B. Description of corner evidence found and/or method applied in restoring or reestablishing corner:

M-9 Reestablished corner midway and on line between East 1/4 corner Section 25 and East 1/4 corner Section 24.



C. Description of monument for corner and accessories established to perpetuate locating the position of the corner:

M-9 Southeast corner Section 24, T4N, R1W.
True location of corner falls within house #4363 Wilfors Drive.
A reference corner was set on the East line of Section 25, at a distance of 58.30 feet S00°38'33"W of the actual corner, and on the South line of Lot 42, Red Cedar Manor No. 1.
Witnesses to reference corner:
Concrete monument, S76°32'13"E 49.02'
Concrete monument, N76°32'13"W 81.30'
Southwest corner garage house #4363 Wilfors Drive, N25°W, 33.24'
Southeast corner porch house #4363 Wilfors Drive, N30°E, 27.60'

Signed by

Larry A. Bryan

Date

12-16-87

Surveyor's Michigan License No.

25832

FORM APPROVED BY MICHIGAN STATE BOARD OF LAND SURVEYORS, JAN. 28, 1971
REVISED MAY 14, 1975
REVISED JAN. 1983

LAND CORNER RECORDATION CERTIFICATE
Filing Requirement of Act 74, Mich. P.A. 1970

Liber 9 Page 312

For corners in

Ingham

Located in:

Corner Code #

1. Public Land Survey

T 4N R 1W

M-8

2. Property Controlling
in Section

S T R

3. Miscellaneous
Property in Sec.

S T R

FILED

960061914
01/15/1998 08:54:11
REGISTER OF DEEDS
Paula Johnson
INGHAM COUNTY, MI

Register of Deeds Stamp & File Number

4. Lot No. _____, Recorded Plat _____
5. Private Claims _____

I, James E. Stephens, in a field survey on Jan. 12, 1998 do hereby state that under requirements of P.A. 74, Michigan P.A. of 1970, the corner points mentioned in lines 1 and 2 above were in conformance with regulations and rules therefore as required in the current manual of survey instructions of the United States Department of the Interior, Bureau of Land Management or by a decree of a Court of Law and for that the corner points mentioned in lines 3, 4 and 5 above were in conformance with the rules of the Michigan Board of Land Surveyors or by a Decree of a Court of Law; established, re-established, monumented, recovered, found as expressed below:

NOTE: Not more than 2 corners, all in the same town and range, may be recorded on this certificate.

Meridian Township

	A	B	C	D	E	F	G	H	I	J	K	L	M
1													
2													
3													
4													
5													
6													
7													
8													
9													
10													
11													
12													
13													

A. Description of original monument and accessories and/or subsequent restoration:

Original monument and accessories obliterated.

B. Description of corner evidence found and/or method applied in restoring or reestablishing corner:

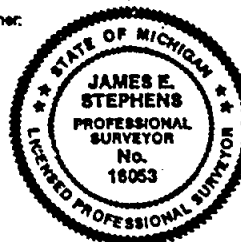
Found $\frac{1}{2}$ " diameter steel rod in a monument box.

This Certificate is being recorded to perpetuate witness information on subject corner.

C. Description of monument for corner and accessories established to perpetuate locating the position of the corner:

$\frac{1}{2}$ " diameter steel rod witnessed by:

Survey tag No. 25832 in NE side 24" Ash tree N50°W 38.95'
Survey tag No. 25832 in East side 24" Oak tree S25°W 80.78'
Survey tag No. 16053 in South side 12" Willow tree N70°E 48.89'
Survey tag No. 16053 in West side 12" Maple tree S35°E 81.20'



Signed by James E. Stephens
Surveyor's Michigan License No. 16053

Date January 13, 1998

LAND CORNER RECORDATION CERTIFICATE
Filing Requirement of Act 74, Mich. P.A. 1970

Liber 9 Page 313

For corners in

Ingham

(County)

Located in:

Corner Code #

1. Public Land Survey

T 4N R 1E

C-8

T R

T R

T R

2. Property Controlling
In Section

S

T R

S

T R

3. Miscellaneous
Property in Sec.

S

T R

S

T R

4. Lot No. , Recorded Plat

5. Private Claims

FILED

980001915
01/15/1998 08:54:14
REGISTER OF DEEDS
Paula Johnson
INGHAM COUNTY, MI

Register of Deeds Stamp & File Number

Williamstown Township

	A	B	C	D	E	F	G	H	I	J	K	L	M
1													
2	6		5		4		3		2		1		
3													
4	7		8		9		10		11		12		
5													
6	18		17		16		15		14		13		
7													
8	19		20		21		22		23		24		
9													
10	30		29		28		27		26		25		
11													
12	31		32		33		34		35		36		
13													

I, James E. Stephens, in a field survey on Jan. 12, 19 98 do hereby state that under requirements of P.A. 74, Michigan P.A. of 1970, the corner points mentioned in lines 1 and 2 above were in conformance with regulations and rules therefore as required in the current manual of survey instructions of the United States Department of the Interior, Bureau of Land Management or by a decree of a Court of Law and /or that the corner points mentioned in lines 3, 4 and 5 above were in conformance with the rules of the Michigan Board of Land Surveyors or by a Decree of a Court of Law; established, re-established, monumented, recovered, found as expressed below:

NOTE: Not more than 2 corners, all in the same town and range, may be recorded on this certificate.

A. Description of original monument and accessories and/or subsequent restoration:

Original monument and accessories obliterated.

B. Description of corner evidence found and/or method applied in restoring or reestablishing corner:

Found 3/4" steel rod in a monument box.

This Certificate is being recorded to perpetuate witness information on subject corner.

C. Description of monument for corner and accessories established to perpetuate locating the position of the corner:

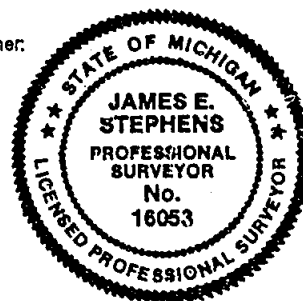
3/4" diameter steel rod witnessed by:

Survey tag No. 39100 in South side 38" Oak tree N15°W 115.10'

Survey tag No. 39100 in East side 60" Oak tree S15°W 103.30'

Survey tag No. 16053 in North side 42" Oak tree S44°E 47.34'

1/2" diameter steel rod North 139.11' in center of Meridian Road



Signed by

James E. Stephens

Surveyor's Michigan License No.

16053

Date

January 13, 1998