

LAND CORNER RECORDATION CERTIFICATE

FILING REQUIREMENT OF ACT 74, MICH. P.A. 1970

NE. CORNER SECTION 19, T1N, R2W, ONONDAGA TWP.
INGHAM COUNTY

LIBER 2 PG 19

FOR CORNERS OF—:	LOCATED IN—:	CORNER CODE NUMBER
1. PUBLIC LAND SURVEY _____ T. <u>1</u> N. <u>2</u> E. <u>W.</u>		<u>C-7</u>
2. PROPERTY CONTROLLING IN SECTION _____ T. _____ N. _____ S. _____ R. _____ E. _____ W.		
3. MISCELLANEOUS PROPERTY IN SECTION _____ T. _____ N. _____ S. _____ R. _____ E. _____ W.		
4. LOT NO. _____, RECORDED PLAT _____		
5. PRIVATE CLAIMS _____		

FILED

JUL 26 4 15 PM '72

REGISTER OF DEEDS

Paul M. Lewis
INGHAM COUNTY, MICH.

REGISTER OF DEEDS STAMP AND
FILING NUMBER

I, Clyde K. Stephens do hereby certify that under requirements of P.A. 74, Michigan P.A. of 1970, the corner points mentioned in lines 1 and 2 above (identified with circles on index code diagram—over) were, in a field survey on June 22, 1972, established, re-established, monumented, re-monumented, recovered or restored as expressed below and in conformance with regulations and rules therefore as required in the current manual of survey instructions of the United States Department of the Interior, Bureau of Land Management or by a decree of a court of law. Furthermore, that the corner points mentioned in lines 3, 4 and 5 above were, in a field survey on _____ 19____, found, recovered, restored, established or re-established as expressed below and in conformance with the rules of the Michigan State Board of Registration for Land Surveyors or, by a Decree of a Court of law:

A. Description of original monument and accessories and/or subsequent restoration:
The original monument and accessories obliterated.

B. Description of corner evidence found and/or method applied in restoring or re-establishing corner:
A 1 inch iron was found in the centerline of the two section line roads (Gale Road and Kinneville Road).

C. Description of monument for corner and accessories established to perpetuate locating the position of the corner:
The 1 inch iron found at the NE. corner was left in position with the following witnesses;

Survey tag in the W. side of a 36 inch Oak N10°47'E 139.50 feet.
Survey tag in the NE. side of a 36 inch Oak S23°55'E 71.98 feet.
Survey tag in the W. side of a 36 inch Oak S17°08'E 101.17 feet.
The bearing of the section line west of the corner is WEST.

SIGNED BY Clyde K. Stephens DATE July 25, 1972

SURVEYOR'S MICHIGAN REGISTRATION NO. 3829

(SEAL)

FOR STATE AND UNITED STATES AGENCIES:

SIGNED BY _____ DATE _____
CHIEF OF SURVEY PARTY

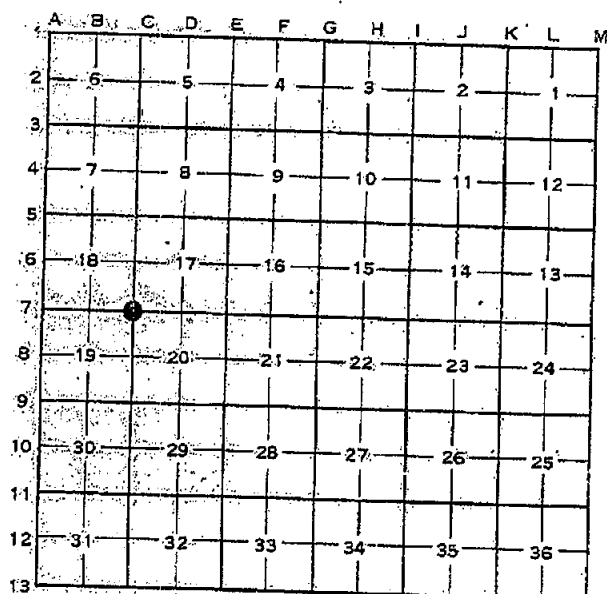
APPROVED AND SIGNED BY _____ DATE _____
MICHIGAN REGISTERED LAND SURVEYOR

SURVEYOR'S MICHIGAN REGISTRATION NO. _____



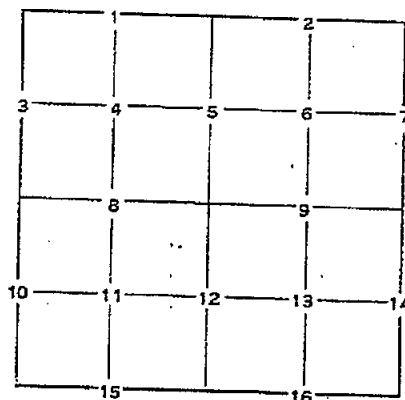
CORNER NUMBERING CODE DIAGRAMS FOR IDENTIFYING LAND CORNER RECORDATIONS AND INDEXING

FOR PUBLIC LAND SURVEY CORNERS IN THE
T. 1N, R. 2W (MENTIONED OVER)



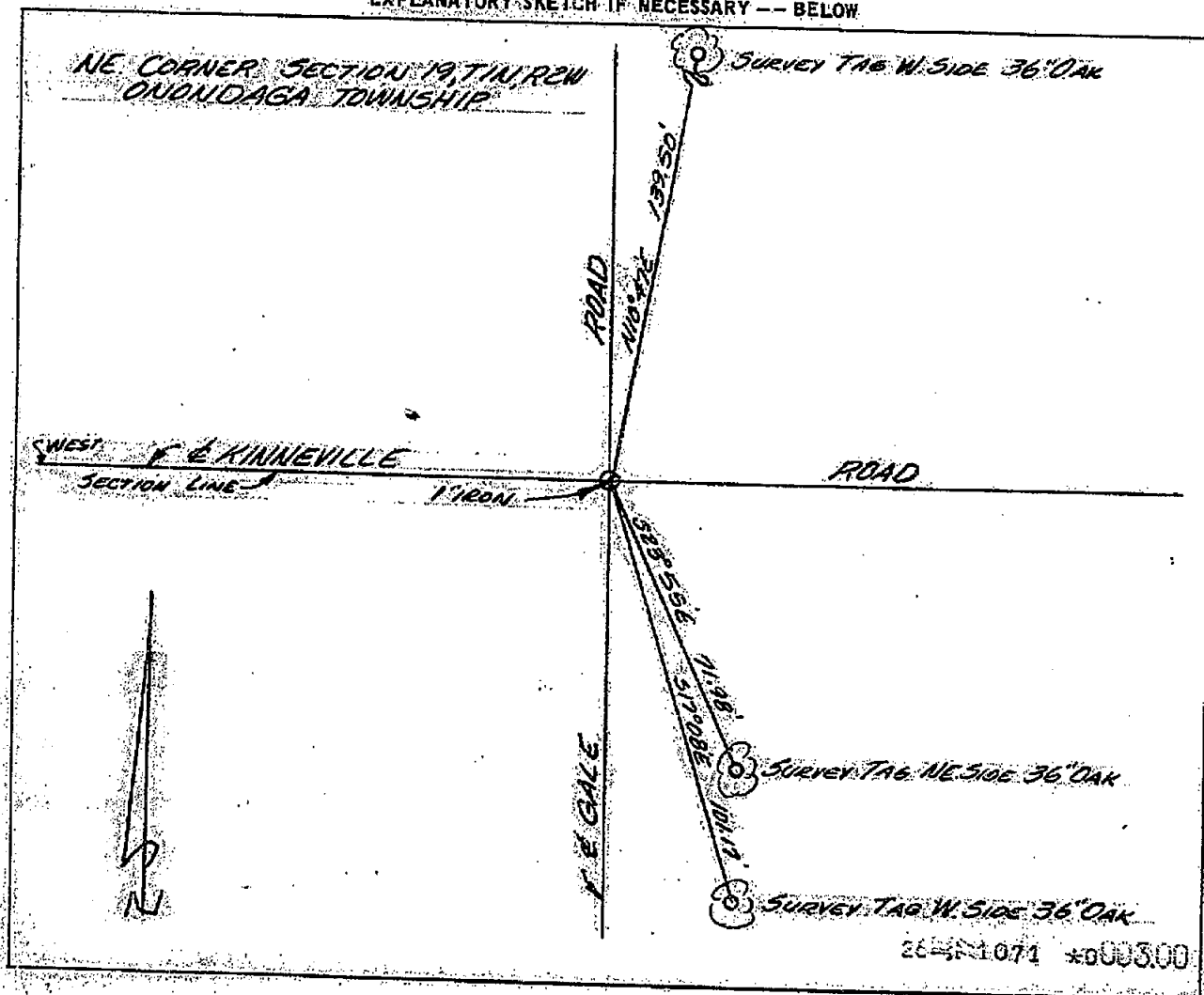
Apply letter prefix for corner points encircled above for identifying corner recordation numbers over.

FOR PROPERTY CONTROLLING AND-MISC.
PROPERTY CORNERS WITHIN THE SECTION
(MENTIONED OVER AND EXCLUDE LOT CORNER)



1. Above coded numbers are positioned on 1/16 fractional lines of the section.
2. Township corner code numbers shall be applied to corners of above typical section not numbered.
3. Miscellaneous property corners within a section, located at points other than numbered above, shall be referenced to at least two of above corner code numbers.
4. Private claim corners to be tied to rectangular land corners if possible - sketch required below.

EXPLANATORY SKETCH IF NECESSARY -- BELOW



LAND CORNER RECORDATION CERTIFICATE

FILING REQUIREMENT OF ACT 74, MICH. P.A. 1970

NW. CORNER SECTION 19, T1N, R2W, ONONDAGA TWP. LIBER 2 PG 21

INGHAM COUNTY

FOR CORNERS OF—

LOCATED IN—

CORNER CODE NUMBER

1. PUBLIC LAND SURVEY T. 1 N. 2 R. 2 W.

A-7

2. PROPERTY CONTROLLING IN SECTION T. N. S. R. E. W.

3. MISCELLANEOUS PROPERTY IN SECTION T. N. S. R. E. W.

4. LOT NO. , RECORDED PLAT

5. PRIVATE CLAIMS

FILED

JUL 26 4 15 PM '72

REGISTER OF DEEDS

Carroll M. Lewis
INGHAM COUNTY, MICH.

REGISTER OF DEEDS STAMP AND
FILING NUMBER

I, Clyde K. Stephens do hereby certify that under requirements of P.A. 74, Michigan P.A. of 1970, the corner points mentioned in lines 1 and 2 above (identified with circles on index code diagram—over) were, in a field survey on June 22, 1972, established, re-established, monumented, re-monumented, recovered or restored as expressed below and in conformance with regulations and rules therefore as required in the current manual of survey instructions of the United States Department of the Interior, Bureau of Land Management or by a decree of a court of law. Furthermore, that the corner points mentioned in lines 3, 4 and 5 above were, in a field survey on 19, found, recovered, restored, established or re-established as expressed below and in conformance with the rules of the Michigan State Board of Registration for Land Surveyors or, by a Decree of a Court of law:

A. Description of original monument and accessories and/or subsequent restoration:
The original monument and accessories obliterated.

B. Description of corner evidence found and/or method applied in restoring or re-establishing corner:
A "T" iron was found in the centerline of the two section line roads (Kinneville Road and Waverly Road).

C. Description of monument for corner and accessories established to perpetuate locating the position of the corner:
The "T" iron found at the NW. corner was left in position with the following witnesses;

Survey tag in the SW. side of a utility pole N40°33'E 55.10 feet.
Survey tag in the NW. side of a utility pole S63°58'E 41.79 feet.
Survey tag in the NE. side of a utility pole S66°47'W 48.45 feet.
The bearing of the section line east of the corner is N89°25'E.

SIGNED BY Clyde K. Stephens DATE July 25, 1972

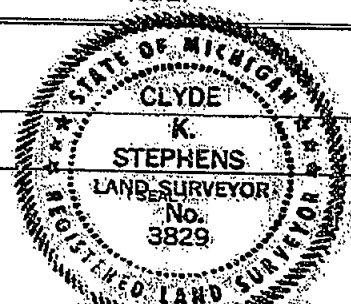
SURVEYOR'S MICHIGAN REGISTRATION NO. 3829

(SEAL)

FOR STATE AND UNITED STATES AGENCIES:

SIGNED BY _____ DATE _____
CHIEF OF SURVEY PARTY

APPROVED AND SIGNED BY _____ DATE _____
MICHIGAN REGISTERED LAND SURVEYOR



331

SURVEYOR'S MICHIGAN REGISTRATION NO. _____

Form No. MC14735
DOUBLEDAY BROS. & CO., KALAMAZOO, MICH.

FORM APPROVED BY MICHIGAN STATE BOARD OF REGISTRATION, JAN. 28, 1971
DISTRIBUTED BY MICHIGAN SOCIETY OF REGISTERED LAND SURVEYORS

CORNER NUMBERING CODE DIAGRAMS FOR IDENTIFYING LAND CORNER RECORDATIONS AND INDEXING

FOR PUBLIC LAND SURVEY CORNERS IN THE
T. 1N, R. 2W (MENTIONED OVER)

	A	B	C	D	E	F	G	H	I	J	K	L	M
2	6		5		4		3		2		1		
3													
4	7		8		9		10		11		12		
5													
6	18		17		16		15		14		13		
7													
8	19		20		21		22		23		24		
9													
10	30		29		28		27		26		25		
11													
12	31		32		33		34		35		36		
13													

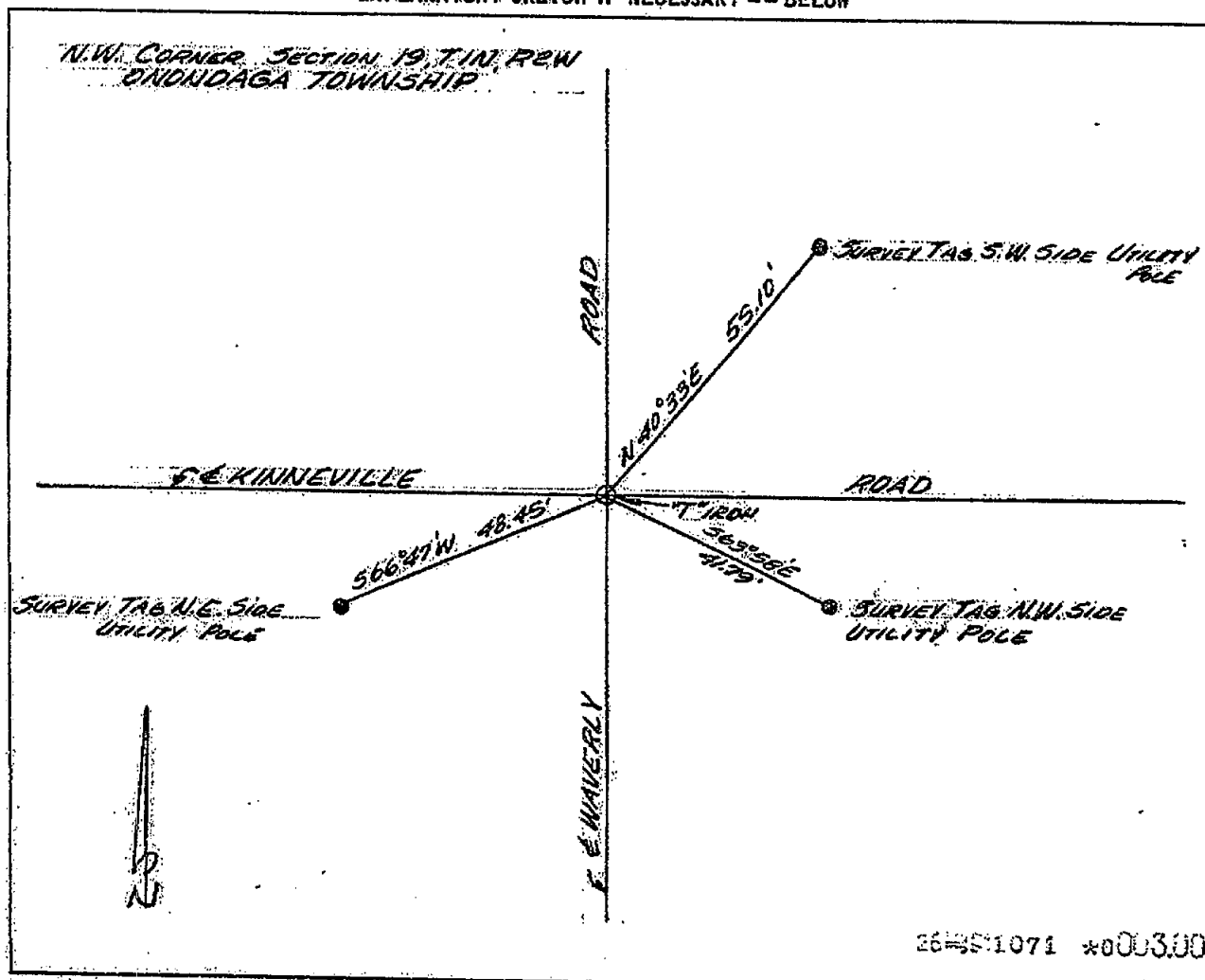
Apply letter prefix for corner points encircled above for identifying corner recordation numbers over.

FOR PROPERTY CONTROLLING AND MISC.
PROPERTY CORNERS WITHIN THE SECTION
(MENTIONED OVER AND EXCLUDE LOT CORNER)

	1	2	3	4	5	6	7
3							
4							
5							
6							
7							
8							
9							
10							
11							
12							
13							
14							
15							
16							

1. Above coded numbers are positioned on 1/16 fractional lines of the section.
2. Township corner code numbers shall be applied to corners of above typical section not numbered.
3. Miscellaneous property corners within a section, located at points other than numbered above, shall be referenced to at least two of above corner code numbers.
4. Private claim corners to be tied to rectangular land corners if possible - sketch required below.

EXPLANATORY SKETCH IF NECESSARY -- BELOW



LAND CORNER RECORDATION CERTIFICATE

FILING REQUIREMENT OF ACT 74, MICH. P.A. 1970

N1/4 CORNER SECTION 19, T1N, R2W, ONONDAGA TWP.
INGHAM COUNTY

LIBER 2 PG 23

FOR CORNERS OF -:	LOCATED IN -:	CORNER CODE NUMBER
1. PUBLIC LAND SURVEY _____ T. <u>1</u> N. <u>E.</u> R. <u>2</u> W. <u>E.</u>		<u>B-7</u>
2. PROPERTY CONTROLLING IN SECTION _____ T. _____ N. _____ S. _____ R. _____ E. _____ W. _____		
3. MISCELLANEOUS PROPERTY IN SECTION _____ T. _____ N. _____ S. _____ R. _____ E. _____ W. _____		
4. LOT NO. _____, RECORDED PLAT _____		
5. PRIVATE CLAIMS _____		

FILED

JUL 26 4 16 PM '72

REGISTER OF DEEDS

Paul M. Lewis
INGHAM COUNTY, MICH.

REGISTER OF DEEDS STAMP AND
FILING NUMBER

I, Clyde K. Stephens do hereby certify that under requirements of P.A. 74, Michigan P.A. of 1970, the corner points mentioned in lines 1 and 2 above (identified with circles on index code diagram - over) were, in a field survey on June 22, 1972, established, re-established, monumented, re-monumented, recovered or restored as expressed below and in conformance with regulations and rules therefore as required in the current manual of survey instructions of the United States Department of the Interior, Bureau of Land Management or by a decree of a court of law. Furthermore, that the corner points mentioned in lines 3, 4 and 5 above were, in a field survey on 19, found, recovered, restored, established or re-established as expressed below and in conformance with the rules of the Michigan State Board of Registration for Land Surveyors or, by a Decree of a Court of law:

A. Description of original monument and accessories and/or subsequent restoration:
The original monument and accessories obliterated.

B. Description of corner evidence found and/or method applied in restoring or re-establishing corner:
A boat spike was found in the centerline of the section line road (Kinneville Road).

C. Description of monument for corner and accessories established to perpetuate locating the position of the corner:
The boat spike found at the N1/4 corner was left in position with the following witnesses;

Survey tag in the SE. side of a 8 inch Mulberry N33°06'E 56.50 feet.
Survey tag in the top of a fence post N65°43'E 64.60 feet.
Survey tag in the N. side of a 8 inch Poplar S33°13'W 99.00 feet.
The bearing of the section line east of the corner is EAST.
The bearing of the section line west of the corner is S89°25'W.

179°25'

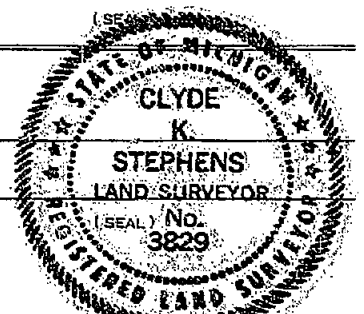
SIGNED BY Clyde K. Stephens DATE July 25, 1972

SURVEYOR'S MICHIGAN REGISTRATION NO. 3829

FOR STATE AND UNITED STATES AGENCIES:

SIGNED BY _____ DATE _____
CHIEF OF SURVEY PARTY

APPROVED AND SIGNED BY _____ DATE _____
MICHIGAN REGISTERED LAND SURVEYOR



332 SURVEYOR'S MICHIGAN REGISTRATION NO. _____

Form No. ML M735
DOUBLEDAY BROS. & CO., KALAMAZOO, MICH.

FORM APPROVED BY MICHIGAN STATE BOARD OF REGISTRATION, JAN. 28, 1971
DISTRIBUTED BY MICHIGAN SOCIETY OF REGISTERED LAND SURVEYORS

LAND CORNER RECORDATION CERTIFICATE

FILING REQUIREMENT OF ACT 74, MICH. P.A. 1970

Section 19, T1N, R2W, Onondaga Township, Ingham County

FOR CORNERS OF--	LOCATED IN--	CORNER CODE NUMBER
1. PUBLIC LAND SURVEY <u>19</u> T. <u>1</u> N. R. <u>2</u> W.		A-7
2. PROPERTY CONTROLLING IN SECTION _____ T. _____ S. R. _____ E. W.		
3. MISCELLANEOUS PROPERTY IN SECTION _____ T. _____ S. R. _____ E. W.		
4. LOT NO. _____, RECORDED PLAT _____		
5. PRIVATE CLAIMS _____		

LIBER

4 PG. 80

FILED

AUG 30 8 19 AM '77

REGISTER OF DEEDS

Paula Johnson
INGHAM COUNTY, MICH.

REGISTER OF DEEDS STAMP AND
FILING NUMBER

I, Ron Helsel, do hereby certify that under requirements of P.A. 74, Michigan P.A. of 1970, the corner points mentioned in lines 1 and 2 above were, in a field survey on May 17, 1977, established, re-established, monumented, re-monumented, recovered or restored as expressed below and in conformance with regulations and rules therefore as required in the current manual of survey instructions of the United States Department of the Interior, Bureau of Land Management or by a decree of a court of law. Furthermore, that the corner points mentioned in lines 3, 4 and 5 above were, in a field survey on _____, 19____, found, recovered, restored, established or re-established as expressed below and in conformance with the rules of the Michigan State Board of Registration for Land Surveyors or, by a Decree of a Court of law:

A. Description of original monument and accessories and/or subsequent restoration:

A-7 Original Mon. Obliterated

B. Description of corner evidence found and/or method applied in restoring or re-establishing corner:

A-7 Fd. "T" iron as recorded in Liber 2, page 21 by surveyor Stephens -
Witnesses all obliterated. Set new witnesses

C. Description of monument for corner and accessories established to perpetuate locating the position of the corner:

A-7 NW Corner, Section 19

S45°E, 44.66 ft. U.S.G.S. Mon. geological survey
N20°W, 94.31 ft. Nail & Tag in 30" Willow Tree
N45°E, 46.88 ft. Centerline concrete manhole (catchbasin)
N50°W, 81.62 ft. Nail & Tag in 24" Chinese Elm Tree

SIGNED BY Ron Helsel DATE May 20, 1977

SURVEYOR'S MICHIGAN REGISTRATION NO. 18994

FOR STATE AND UNITED STATES AGENCIES:

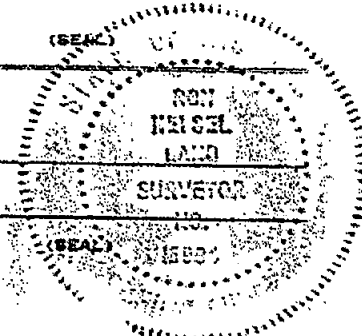
SIGNED BY _____ DATE _____

CHIEF OF SURVEY PARTY

APPROVED AND SIGNED BY _____ DATE _____

MICHIGAN REGISTERED LAND SURVEYOR

SURVEYOR'S MICHIGAN REGISTRATION NO. _____



1082

FORM APPROVED BY MICHIGAN STATE BOARD OF REGISTRATION, JAN. 28, 1971
REVISED MAY 14, 1973

MAY PLACE SKETCH ON BACK OR ATTACHED SHEET

LAND CORNER RECORDATION CERTIFICATE

FILING REQUIREMENT OF ACT 74, MICH. P.A. 1970

LIBER 4 366

FOR CORNERS OF --:	LOCATED IN --:	CORNER CODE NUMBER
1. PUBLIC LAND SURVEY _____ T. <u>1</u> N. <u>2</u> E. <u>W.</u>		<u>C-5</u>
2. PROPERTY CONTROLLING IN SECTION _____ T. _____ N. _____ S. _____ R. _____ E. _____ W. _____		
3. MISCELLANEOUS PROPERTY IN SECTION _____ T. _____ N. _____ S. _____ R. _____ E. _____ W. _____		
4. LOT NO. _____, RECORDED PLAT _____		
5. PRIVATE CLAIMS _____		

FILED

SEP 19 8 53 AM '78

REGISTER OF DEEDS

Paula Johnson
INGHAM COUNTY, MICH.

REGISTER OF DEEDS - STAMP AND FILING NUMBER

I, Ronnie M. Lester, do hereby certify that under requirements of P.A. 74, Michigan P.A. of 1970, the corner points mentioned in lines 1 and 2 above were, in a field survey on June 9, 1978, established, re-established, monumented, re-monumented, recovered or restored as expressed below and in conformance with regulations and rules therefore as required in the current manual of survey instructions of the United States Department of the Interior, Bureau of Land Management or by a decree of a court of law. Furthermore, that the corner points mentioned in lines 3, 4 and 5 above were, in a field survey on _____, 19____, found, recovered, restored, established or re-established as expressed below and in conformance with the rules of the Michigan State Board of Registration for Land Surveyors or, by a Decree of a Court of law:

A. Description of original monument and accessories and/or subsequent restoration:

C-5

Post set by Harvey Parke in original government survey dated Oct., 1825 to Jan., 1826.

Corner referred to in survey by T.J. Brown, County Surveyor, dated Nov. 13, 1847 (v.C, p.4).

B. Description of corner evidence found and/or method applied in restoring or re-establishing corner:

C-5

Excavated hole 10' x 5' to an average depth of 3.5' in centerline of Gale Road and centered on extended fence line east. Found 3/4" x 2' white painted pipe just below road surface on fence line east and in centerline of Gale Road. Found 3 plow prongs, 3.5' below surface, along side and bent over a 1" x 2.5' iron rod supported by 2 wood stakes 6" apart, + 1.5' west of centerline of Gale Road on extended fence line east. Accepted 1" iron rod as corner. Excavation conducted by Ingham County Survey and Remonumentation Project crew.

C. Description of monument for corner and accessories established to perpetuate locating the position of the corner:

C-5

Southeast Corner, Section 7, T1N-R2W

Set 4" x 36" concrete monument with 1/2" x 38" rerod with cap #18998, and concrete collar and cover at location of iron bar described above:

Nail & tag, #18998, north side 30" Oak, ENE, 44.00'

Nail & tag, #18998, southwest side 12" Oak, SE, 39.15'

Nail & tag, #18998, north side 10" Hickory, WSW, 30.35'

Nail & tag, #18998, east side 16" Walnut, NW, 44.48'

SIGNED BY Ronnie M. Lester

DATE 9/12/78

SURVEYOR'S MICHIGAN REGISTRATION NO. 18998

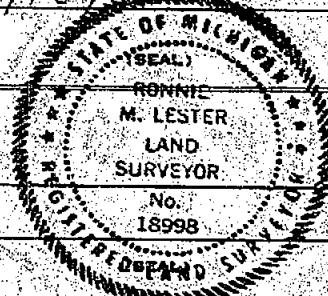
~~XXXXXXXXXXXXXXXXXXXXXXXXXXXX~~



SIGNED BY [Signature] DATE 9/12/78
DIRECTOR, Ingham County Survey and Remonumentation Project

SURVEYOR'S MICHIGAN REGISTRATION NO. 17624

1360



LAND CORNER RECORDATION CERTIFICATE
FILING REQUIREMENT OF ACT 74, MICH. P.A. 1970

LIBER 6 PAGE 358

FOR CORNERS OF--	LOCATED IN--	CORNER CODE NUMBER
1. PUBLIC LAND SURVEY_____	T. 1 N. R. 2 W.	B-6, B-7, C-6
2. PROPERTY CONTROLLING IN SECTION_____	T. _____ N. S. R. _____ E. W.	
3. MISCELLANEOUS PROPERTY IN SECTION_____	T. _____ N. S. R. _____ E. W.	
4. LOT NO. _____, RECORDED PLAT _____		
5. PRIVATE CLAIMS _____		

FILED

FEB 19 8 42 AM '88

REGISTER OF DEEDS

INCHAM COUNTY, MICH.

REGISTER OF DEEDS STAMP AND FILING NUMBER

I, Douglas K. Richardson, do hereby certify that under requirements of P.A. 74, Michigan P.A. of 1970, the corner points mentioned in lines 1 and 2 above were, in a field survey on July 29, 1986, established, re-established, monumented, re-monumented, recovered or restored as expressed below and in conformance with regulations and rules therefore as required in the current manual of survey instructions of the United States Department of the Interior, Bureau of Land Management or by a decree of a court of law. Furthermore, that the corner points mentioned in lines 3, 4 and 5 above were, in a field survey on _____, 19____, found, recovered, restored, established or re-established as expressed below and in conformance with the rules of the Michigan State Board of Registration for Land Surveyors or, by a Decree of a Court of law:

A. Description of original monument and accessories and/or subsequent restoration:

B-6 Not originally monumented

B-7 Original monument and accessories obliterated. Subsequent restoration recorded in Liber 2, Page 23

C-6 Original monument and accessories obliterated. Subsequent restoration not on record.

B. Description of corner evidence found and/or method applied in restoring or re-establishing corner:

B-6 Established corner at intersection of N-S and E-W 1/4 line fences.

B-7 Re-established corner on line between SE and SW Section corner on production of fence line to North. Boat spike recorded in Liber 2, page 23 was found to be at split, more or less, between SE and SW corners of Section 18 and was not accepted.

C-6 Found 1/2" iron and cap (RLS No. not readable).

C. Description of monument for corner and accessories established to perpetuate locating the position of the corner:

B-6 Center Sec. 18, T1N, R2W
Set 1/2" iron and cap
N&T N. Side 15" Oak, S80°W, 18.61'
N&T W. Side 12" Cherry, S35°W, 25.29'
N&T W. Side 8" Oak, S05°W, 16.27'
N&T N. Side 10" Cherry, S40°E, 16.44'

B-7 S 1/4 cor. Section 18, T1N, R2W
Boat Spike, N77°W, 59.52'
N&T SW side 15" Elm, North, 42.92'
N&T SE side Triple Apple, N40°E, 56.60'
N&T North side 15" Elm, S80°E, 189.34'
Centerline Kinneville Road, North, 13'±

C-6 East 1/4 corner, Section 18, T1N, R2W
Found 1/2" iron and cap
N&T East side 36" Oak, N20°W, 46.97'
N&T North Side 30" Oak, N45°E, 34.88'

N&T SW Side 24" Maple, S45°E, 44.90'
N&T East Side 12" Elm, S45°W, 23.55'

SIGNED BY Douglas K. Richardson
SURVEYOR'S MICHIGAN REGISTRATION NO. 31603

DATE 10-17-86

FOR STATE AND UNITED STATES AGENCIES:

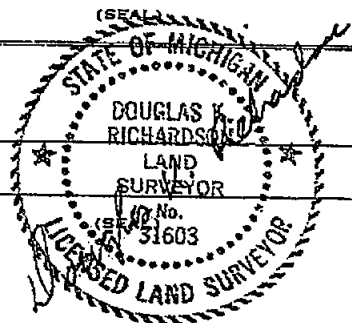
SIGNED BY _____ DATE _____

CHIEF OF SURVEY PARTY

APPROVED AND SIGNED BY _____ DATE _____

MICHIGAN REGISTERED LAND SURVEYOR

SURVEYOR'S MICHIGAN REGISTRATION NO. _____



LAND CORNER RECORDATION CERTIFICATE
Filing Requirement of Act 74, Mich. P.A. 1970

LIBER 8 PAGE 435

FILED

For corners in

INGHAM

(County)

Located In:

Corner Code ##

1. Public Land Survey

T 1N R 2W

A-7

T R

T R

T R

2. Property Controlling
in Section

S T R

S T R

3. Miscellaneous
Property in Sec.

S T R

S T R

4. Lot No. , Recorded Plat

5. Private Claims

APR 5 10 30 AM '95

REGISTER OF DEEDS

THOMAS J. JOHNSON

INGHAM COUNTY, MICH.

Register of Deeds Stamp & File Number

Onondaga Township

	A	B	C	D	E	F	G	H	I	J	K	L	M
2	1	2	3	4	5	6	7	8	9	10	11	12	13
3	14	15	16	17	18	19	20	21	22	23	24	25	26
4	27	28	29	30	31	32	33	34	35	36	37	38	39
5	40	41	42	43	44	45	46	47	48	49	50	51	52
6	53	54	55	56	57	58	59	60	61	62	63	64	65
7	66	67	68	69	70	71	72	73	74	75	76	77	78
8	79	80	81	82	83	84	85	86	87	88	89	90	91
9	92	93	94	95	96	97	98	99	100	101	102	103	104
10	105	106	107	108	109	110	111	112	113	114	115	116	117
11	118	119	120	121	122	123	124	125	126	127	128	129	130
12	131	132	133	134	135	136	137	138	139	140	141	142	143
13	144	145	146	147	148	149	150	151	152	153	154	155	156

I, James E. Stephens in a field survey on February 16, 1995,
do hereby certify that under requirements of P.A. 74, Michigan P.A. of 1970, the corner points mentioned
in lines 1 and 2 above were in conformance with regulations and rules therefore as required in the
current manual of survey instructions of the United States Department of the Interior, Bureau of Land
Management or by a decree of a Court of Law and/or that the corner points mentioned in lines 3, 4 and 5
above were in conformance with the rules of the Michigan Board of Land Surveyors or by a Decree of a
Court of Law, established, re-established, monumented, re-monumented, recovered, found as
expressed below:

NOTE: Not more than 4 corners, all in the same town and range, may be recorded
on this certificate.

A. Description of original monument and accessories and/or subsequent restoration:

Original monument and accessories were not found.

B. Description of corner evidence found and/or method applied in restoring or reestablishing corner:

1/2" angle iron bar in monument box was found at intersection of centerlines
of Waverly Road and Kinneville Road, as indicated on Land Corner Recordation
Certificate recorded in Liber 4, page 80.

This Certificate is being prepared to up-date witness information.

C. Description of monument for corner and accessories established to perpetuate locating the position of the corner:

1/2" angle iron bar in monument box witnessed by:
1/2" diameter rod in monument box South 9.24'
1/2" rod and cap No. 30090 S45°E 46.63'
Set nail & tag in NE side 14" Elm tree N45°W 46.27'
NE corner 3" steel angle iron corner fence post S45°W 42.45'



Signed by

James E. Stephens

Date

February 28, 1995

Surveyor's Michigan License No.

16053

LAND CORNER RECORDATION CERTIFICATE
Filing Requirement of Act 74, Mich. P.A. 1970

For corners in
INGHAM
 (County)

Located In:

Corner Code ##

FILED

APR 5 10 30 AM '95

REGISTER OF DEEDS

Paula Johnson

INGHAM COUNTY, MICH.

Register of Deeds Stamp & File Number

1. Public Land Survey	T <u>1N</u> R <u>2W</u>	<u>B-7</u>
	T _____ R _____	_____
	T _____ R _____	_____
	T _____ R _____	_____
2. Property Controlling in Section	S _____ T _____ R _____	_____
	S _____ T _____ R _____	_____
3. Miscellaneous Property in Sec.	S _____ T _____ R _____	_____
	S _____ T _____ R _____	_____

4. Lot No. _____, Recorded Plat _____
 5. Private Claims _____

Onondaga Township

	A	B	C	D	E	F	G	H	I	J	K	L	M
2	6	5	4	3	2	1							
3													
4	7	8	9	10	11	12							
5													
6	18	17	16	15	14	13							
7	19	20	21	22	23	24							
8													
9													
10	30	29	28	27	26	25							
11													
12	31	32	33	34	35	36							
13													

I, James E. Stephens, in a field survey on February 16, 19 95, do hereby certify that under requirements of P.A. 74, Michigan P.A. of 1970, the corner points mentioned in lines 1 and 2 above were in conformance with regulations and rules therefore as required in the current manual of survey instructions of the United States Department of the Interior, Bureau of Land Management or by a decree of a Court of Law and/or that the corner points mentioned in lines 3, 4 and 5 above were in conformance with the rules of the Michigan Board of Land Surveyors or by a Decree of a Court of Law; established, re-established, monumented, re-monumented, recovered, found as expressed below:

NOTE: Not more than 4 corners, all in the same town and range, may be recorded on this certificate.

A. Description of original monument and accessories and/or subsequent restoration:

Original monument and accessories were not found.

B. Description of corner evidence found and/or method applied in restoring or reestablishing corner:

Found boat spike in centerline of Kinneville Road as indicated in Land Corner Recordation Certificate recorded in Liber 6, page 358.

This Certificate is being prepared to up-date witness information.

C. Description of monument for corner and accessories established to perpetuate locating the position of the corner:

Boat spike in centerline of Kinneville Road witnessed by:
 Nail & tag No. 25832 in SE side Twin 12" Elm tree N10°W 31.10'
 Nail & tag No. 16053 in SE side 16" Elm tree N50°E 67.45'
 Nail & tag No. 16053 in East side 8" Elm tree S15°W 36.15'
 Nail & tag No. 16053 in SE side 8" Red Pine tree S40°W 68.92'



Signed by *James E. Stephens*
 Surveyor's Michigan License No. 16053

Date February 28, 1995

LAND CORNER RECORDATION CERTIFICATE
Filing Requirement of Act 74, Mich. P.A. 1970

Liber

9 Page

445

For corners in

Ingham
(County)

Located In:

Corner Code #

FILED

980065992
12/28/1998 09:31:52
REGISTER OF DEEDS
Paula Johnson
INGHAM COUNTY, MI

1. Public Land Survey

T 1N R 02W

C-5

T R

T R

T R

T R

2. Property Controlling
in Section

S T

T R

S T

T R

3. Miscellaneous
Property in Sec.

S T

T R

S T

T R

Register of Deeds Stamp & File Number

4. Lot No. , Recorded Plat

5. Private Claims

I, J. Dean Geers, P.S., in a field survey on Nov. 25, 19 98 do hereby state that under requirements of P.A. 74, Michigan P.A. of 1970, the corner points mentioned in lines 1 and 2 above were in conformance with regulations and rules therefore as required in the current manual of survey instructions of the United States Department of the Interior, Bureau of Land Management or by a decree of a Court of Law and/or that the corner points mentioned in lines 3, 4 and 5 above were in conformance with the rules of the Michigan Board of Land Surveyors or by a Decree of a Court of Law; established, re-established, monumented, recovered, found as expressed below:

NOTE: Not more than 2 corners, all in the same town and range, may be recorded on this certificate.

A. Description of original monument and accessories and/or subsequent restoration:

	A	B	C	D	E	F	G	H	I	J	K	L	M
1													
2	6		5		4		3		2		1		
3													
4	7		8		9		10		11		12		
5													
6	18		17		16		15		14		13		
7													
8	19		20		21		22		23		24		
9													
10	20		29		28		27		26		25		
11													
12	31		32		33		34		35		36		
13													

B. Description of corner evidence found and/or method applied in restoring or reestablishing corner:

Found "PK" nail near center of roadway

584mm	Locust	N85E	11.07m	(36.32')
457mm	Locust	S55E	11.94m	(39.17')
355mm	Elm	S40W	12.44m	(40.81')
635mm	Hickory	N43W	13.66m	(44.82')
Steel Fence Post		N40E	10.47m	(34.35')

C. Description of monument for corner and accessories established to perpetuate locating the position of the corner:

Set monument box with 3/4" iron pin.

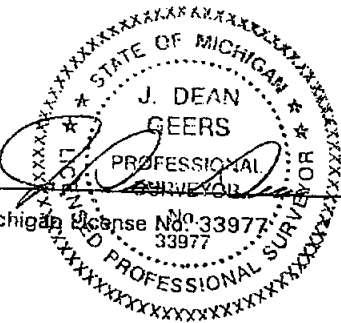
Nail in W side	525mm	White Oak	N43E	20.281m	(66.54')
Nail in SW side	450mm	Locust	S55E	11.810m	(38.75')
Nail in SE side	375mm	Locust	S27W	20.769m	(68.14')
Nail in NE side	650mm	Hickory	N46W	13.787m	(45.23')

Signed by

Surveyor's Michigan License No. 33977

Date

12-14-98



LAND CORNER RECORDATION CERTIFICATE
Filing Requirement of Act 74, Mich. P.A. 1970

For corners in

INGHAM COUNTY
(County)
ONONDAGA TOWNSHIP
1. Public Land Survey

Located in:

Corner Code #

T 1N R 2W

C-6

T R

T R

T R

T R

2. Property Controlling
in Section

S

T R

S

T R

3. Miscellaneous
Property in Sec.

S

T R

Paula Johnson
INGHAM COUNTY
REGISTER OF DEEDS
ENGINEER SURVEYING & ENGINEERING

L-10 P-224

RECORDED
CRNR 9.00

2002-007461



2002-007461

Page: 1 of 1

02/09/2002 09:17A

Register of Deeds Stamp & File Number

4. Lot No. _____, Recorded Plat _____ 5.
Private Claims _____

I, DAVID L. CLIFFORD, in a field survey on OCT. 15, 1999, do hereby state that under requirements of P.A. 74, Michigan P.A. of 1970, the corner points mentioned in lines 1 and 2 above were in conformance with regulations and rules therefore as required in the current manual of survey instructions of the United States Department of the Interior, Bureau of Land Management or by a decree of a Court of Law, and for that the corner points mentioned in lines 3, 4 and 5 above were in conformance with the rules of the Michigan Board of Land Surveyors or by a Decree of a Court of Law, established, re-established, monumented, recovered, found as expressed below:

NOTE: Not more than 2 corners, all in the same town and range, may be recorded on this certificate.

A. Description of original monument and accessories and/or subsequent restoration:

1. HERVEY PARKE D.S. SET POST IN ORIGINAL GOVERNMENT SURVEY IN MARCH 1826, W.O. 10" N89E 28 LKS; W.O. 22" N31W 73 LKS;

2. A. JACKSON, COUNTY SURVEYOR, USED CORNER IN A SURVEY RECORDED IN VOLUME 2 INGHAM COUNTY SURVEYOR RECORDS PAGE 46 IN JAN. 1848, WITH NO MENTION OF MONUMENT OR WITNESSES.

3. A.P. DRAKE, COUNTY SURVEYOR, USED CORNER IN A SURVEY RECORDED IN VOLUME 3 INGHAM COUNTY SURVEYOR RECORDS PAGE 130 IN APRIL 1877 AS A STONE FROM WHICH A 12" HICKORY BEARS S20W 81 LKS.

4. G. EDWIN STATES, COUNTY SURVEYOR, IN A MARGINAL NOTE ON DRAKES SURVEY DATED SEP. 1892 DESCRIBES CORNER AS A STONE; B.O. 12" S87E, 40 LKS (26.4'), W.O. 22" N31W, 73 LKS (48.2').

5. THE INGHAM COUNTY REMONUMENTATION PROGRAM OF THE LATE 1970'S EXCAVATED A 20' NORTH-SOUTH BY 12' EAST-WEST HOLE 3 FOOT DEEP AND FOUND A RAILROAD SPIKE ON CENTERLINE GALE ROAD ON FENCE LINE TO EAST. THE RAILROAD SPIKE WAS REMOVED AND NEVER REPLACED OR WITNESSED; SUBSEQUENT TO EXCAVATION AND BEFORE CORNER STATUS WAS FINALIZED A 1/2" BAR & CAP WAS SET BY LAVERNE HENDRYX RLS #3263 IN THE EXCAVATION SITE. A LETTER WAS SENT TO HENDRYX ASKING HIM TO RECORD CORNER IF HE WAS SATISFIED WITH LOCATION AND NO FURTHER ACTION WAS TAKEN BY REMONUMENTATION STAFF.

6. DOUG RICHARDSON, RLS # 31603, RECORDED CORNER IN LIBER 6 OF CORNERS PAGE 350 IN OCT. 1986 AS A FOUND 1/2" REBAR WITH UNREADABLE CAP; N&T EAST SIDE 36" OAK N20W 46.97'; N&T NORTH SIDE, 30" OAK, N45E, 34.88'; N&T SW SIDE 24" MAPLE, S45E, 44.90'; N&T EAST SIDE 12" ELM, S45W, 23.55'

B. Description of corner evidence found and/or method applied in restoring or reestablishing corner:

SEARCHED AT APPARENT LOCATION OF CORNER AND FOUND A 1/2" BAR & CAP 2' WEST OF CENTERLINE GALE ROAD AND 2' SOUTH OF FENCE LINE TO EAST. TRAVERSE OF SECTION LINE REVEALED THAT THIS POSITION IS HALF WAY & ON LINE BETWEEN THE SECTION CORNERS. BOTH OF STATES WITNESSES STILL STAND AND WHEN INTERSECTED INDICATE A SPOT ON CENTERLINE AND ON FENCE LINE TO EAST. I BELIEVE THAT THIS WAS LOCATION OF RAILROAD SPIKE BEFORE IT WAS REMOVED AND REPRESENTS THE HISTORICAL LOCATION OF CORNER. SET 3/4" BAR & CAP AT INTERSECTION OF STATES WITNESSES AND ACCEPTED IT AS PERPETUATION OF CORNER LOCATION.

C. Description of monument for corner and accessories established to perpetuate locating the position of the corner:

C-6 T1N-R2W

3/4" BAR & ORANGE PLASTIC CAP STAMPED RLS 25837 ON CENTERLINE GALE ROAD ON FENCE LINE TO EAST

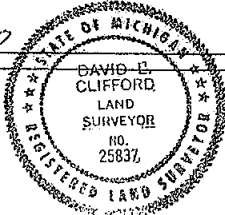
FOUND NAIL & TAG #25832, SW SIDE 21" MAPLE, S35°E, 43.26'

FOUND NAIL & TAG #25832, W. SIDE 37" OAK, N61°E, 31.20'

FOUND PK NAIL, EAST SIDE 48" OAK, N28°W, 47.60'

SET NAIL & TAG #28409, NE SIDE 12" WALNUT, S60°W, 26.34'

Signed by David L. Clifford
Surveyor's Michigan License No. 25837

Date JANUARY 24, 2002

FORM APPROVED BY MICHIGAN STATE BOARD OF PROFESSIONAL SURVEYORS, JAN. 22, 1971
REVISED MAY 14, 1976
REVISED JAN. 1983
REVISED OCT. 1995