

LAND CORNER RECORDATION CERTIFICATE
Filing Requirement of Act 74, Mich. P.A. 1970

For corners in

INGHAM

(County)

Located In:

Corner Code #

STOCKBRIDGE TOWNSHIP

1. Public Land Survey

T 1N R 2E

C 11

T R

T R

T R

T R

2. Property Controlling
in Section

S

T R

S

T R

3. Miscellaneous
Property in Sec.

S

T R

S

T R

4. Lot No. Recorded Plat

5. Private Claims

Paula Johnson-
INGHAM COUNTY
REGISTER OF DEEDS
OFFICIAL SEAL



L-11 P-224

CRNR 14.00

2004-060651

2004-060651

Page: 1 of 1
09/23/2004 10:36 A

Register of Deeds Stamp & File Number

I, DAVID L. CLIFFORD, in a field survey on MARCH 31, 2004 do hereby state that under requirements of P.A. 74, Michigan P.A. of 1970, the corner points mentioned in lines 1 and 2 above were in conformance with regulations and rules therefore as required in the current manual of survey instructions of the United States Department of the Interior, Bureau of Land Management or by a decree of a Court of Law and/or that the corner points mentioned in lines 3, 4 and 5 above were in conformance with the rules of the Michigan Board of Land Surveyors or by a Decree of a Court of Law, established, re-established, monumented, recovered, found as expressed below:

NOTE: Not more than 2 corners, all in the same town and range, may be recorded on this certificate.

A. Description of original monument and accessories and/or subsequent restoration:

- JOSEPH WAMPLER, DEPUTY SURVEYOR, SET POST IN ORIGINAL GOVERNMENT SURVEY IN NOVEMBER, 1825 WITH THE FOLLOWING WITNESSES: W OAK 8, N9E, 133; W OAK 18, S60E, 208.
- JOHN MCCREARY, COUNTY SURVEYOR, USED CORNER IN A SURVEY RECORDED IN VOLUME 3, PAGE 231 OF COUNTY SURVEYORS' NOTES ON FEBRUARY 17, 1890: R OAK 7, N50 1/4W, 7 AND R OAK 5, N74 3/4E, 9; AND AS A PLOW SHARE: R OAK 5, N74 3/4E, 9 AND POPLAR 6, S65W, 8 1/4.
- DAVE CLIFFORD, RLS 25837, RECORDED CORNER UNDER ACT 74 IN LIBER 7 PAGE 22 ON NOVEMBER 1, 1988. "DID NOT FIND PLOW SHARE OR STAKE CALLED FOR BY J. MCCREARY. FOUND 1/2" BAR & CAP LS17640 (G. YOUNG) IN FENCE CORNER POST (FENCES SOUTH, WEST AND EAST) WITH THIN POINTED STONE ALONGSIDE. FOUND STUMP OF MCCREARY'S 5" RED OAK BEARING TREE AT 5.9' FROM CENTER OF FENCE CORNER POST. ACCEPTED CORNER POST AS CORNER POSITION AS PERPETUATED BY MCCREARY. USED 1/2" BAR & CAP LS#17640 AS CORNER MONUMENT; NAIL & CAP 17640, 12" DOUBLE CHERRY, N20E, 9'; NAIL & CAP 25837, 20" MAPLE, S40W, 32.75'; NAIL & CAP 25837, 10" MAPLE, S45E, 25.40'; NAIL & CAP 17640, 8" DOUBLE CHERRY, N85E, 22.5'
- BRUCE ANTCLIFF, RLS 25826, RECORDED CORNER AS 1/2" REROD ALONGSIDE POINTED STONE IN ACT 132 SURVEYS IN LIBER 5 PAGE 611 THROUGH PAGE 615 ON JANUARY 30, 1989 WITH THE SAME WITNESSES AS ITEM 3 ABOVE
- GLENN FAUSER, PS 18657, USED CORNER IN AN UNRECORDED ACT 132 SURVEY IN AUGUST 1999 WITH A REFERENCE TO LIBER 5 PAGE 613

B. Description of corner evidence found and/or method applied in restoring or reestablishing corner:

FIELD INVESTIGATION AT APPARENT LOCATION OF CORNER REVEALED A 1/2" BAR & CAP AT ROTTED OFF CORNER FENCE POST 3' EAST OF 2" ANGLE IRON FENCE POST JUST AS THIS SURVEYOR HAD FOUND IT IN 1988. MCCREARY'S WITNESS STUMP IS TOTALLY ROTTED AWAY. ACCEPTED BAR & CAP AS PERPETUATION OF CORNER AND REPLACED IT WITH 3/4"X24" BAR & PA 345 ALUMINUM CAP. MEASURED WEST 2650.52 TO B-11, EAST 2653.90 FEET TO D-11 AND SOUTH 2646.40 FEET TO C-12. MEASUREMENTS ARE FROM SUPER COLLIDER TRAVERSE OF 1988.

C. Description of monument for corner and accessories established to perpetuate locating the position of the corner:

3/4"X24" STEEL BAR WITH 2 1/4" ALUMINUM CAP STAMPED INGHAM COUNTY PA 345 PS 25837
NAIL & KEBS TAG EAST SIDE 18" DOUBLE CHERRY N10E 9.16'
NAIL & KEBS TAG NORTH SIDE 10" DOUBLE CHERRY N85E 22.72'
NAIL & KEBS TAG SW SIDE 13" MAPLE S45E 24.90'
NAIL & KEBS TAG NW SIDE 16" OAK S35W 32.60'
NAIL & TAG 25837 NORTH SIDE 30" OAK N85W 28.78'

Signed by

David L. Clifford

Date MAY 10, 2004

Surveyor's Michigan License No. 25837



FORM APPROVED BY MICHIGAN STATE BOARD OF PROFESSIONAL SURVEYORS, JAN. 28, 1971
REVISED MAY 14, 1976
REVISED JAN. 1983
REVISED OCT. 1985

P.A. 345 INGHAM COUNTY
PEER APPROVED 5/11/2004 M

LAND CORNER RECORDATION CERTIFICATE
Filing Requirement of Act 74, Mich. P.A. 1970

For corners in

INGHAM

(County)

Located in:

Corner Code #

STOCKBRIDGE TOWNSHIP

1. Public Land Survey

T 1N R 2E

C-12

T R

T R

T R

2. Property Controlling
in Section

S

T R

S

T R

3. Miscellaneous
Property in Sec.

S

T R

S

T R

Paula Johnson-
INGHAM COUNTY
REGISTER OF DEEDS
OFFICIAL SEAL



L-11 P-225

CRNR 14.00

2004-060652

2004-060652

Page: 1 of 1
09/23/2004 10:36 A

Register of Deeds Stamp & File Number

4. Lot No. _____, Recorded Plat _____

5. Private Claims _____

I, DAVID L. CLIFFORD, in a field survey on JUNE 3, 2003 and MARCH 31, 2004 do hereby state that under requirements of P.A. 74, Michigan P.A. of 1970, the corner points mentioned in lines 1 and 2 above were in conformance with regulations and rules therefore as required in the current manual of survey instructions of the United States Department of the Interior, Bureau of Land Management or by a decree of a Court of Law and/or that the corner points mentioned in lines 3, 4 and 5 above were in conformance with the rules of the Michigan Board of Land Surveyors or by a Decree of a Court of Law; established, re-established, monumented, recovered, found as expressed below:

NOTE: Not more than 2 corners, all in the same town and range, may be recorded on this certificate.

A. Description of original monument and accessories and/or subsequent restoration:

1. POST SET IN ORIGINAL GOVERNMENT SURVEY BY JOSEPH WAMPLER IN NOVEMBER, 1825 WITH THE FOLLOWING WITNESSES: W OAK 12, N75E, 23; W OAK 24, S72W, 46.

2. JOHN MCCREARY, DEPUTY COUNTY SURVEYOR, RECORDED CORNER IN VOLUME 3, PAGE 215 IN FEB. 1890 WITH THE FOLLOWING WITNESSES: SET STONE, HICKORY 3, N37W, 16; SET STAKE, R OAK 12, S1E, 17

3. DAVE CLIFFORD, RLS 25837, RECORDED CORNER UNDER ACT 74 IN LIBER 7 PAGE 23 ON NOVEMBER 1988. FOUND STONE WITH 2" PIPE ALONGSIDE AND A 36" OAK 11.8' SOUTH (POSSIBLY MCCREARY'S BEARING TREE). ACCEPTED THE STONE AS MCCREARY'S PERPETUATION OF THE CORNER POSITION: NAIL & CAP 25837 IN 36" OAK, S01°E, 11.8'; NAIL & CAP 25837 IN 28" CHERRY, NORTH, 195.0'; NAIL & CAP #25837 IN 24" OAK, EAST, 389.0'

4. BRUCE ANTCLIFF, RLS 25826, USED CORNER IN 2 ACT 132 SURVEYS RECORDED IN LIBER 5 PAGES 611-613 AND LIBER 5 PAGES 614 & 615 WITH THE SAME WITNESSES AS ITEM 3 ABOVE.

5. GLENN FAUSER, PS 18657, USED CORNER IN AN UNRECORDED ACT 132 SURVEY IN AUGUST 1999 WITH A REFERENCE TO LIBER 5 PAGE 613

B. Description of corner evidence found and/or method applied in restoring or reestablishing corner:

FIELD INVESTIGATION AT APPARENT LOCATION OF CORNER REVEALED A 2" PIPE NEXT TO A STONE IN A FENCE 11.7' NORTH OF MCCREARY'S OAK WITNESS JUST AS I HAD FOUND IT IN 1988. ACCEPTED PIPE AS PERPETUATION OF CORNER AND SET STANDARD BAR WITH CAP IN PIPE. MEASURED NORTH 2646.40' TO C-11 (MCCREARY-2631.42'), WEST 2645.94' TO B-12 (MCCREARY-2626.8'), EAST 2649.95' TO D-12, AND SOUTH 2669.60' TO C-13 (MCCREARY-2640'). MEASUREMENTS ARE FROM THE SUPER COLLIDER TRAVERSE OF 1988.

C. Description of monument for corner and accessories established to perpetuate locating the position of the corner:

C-12 T1NR2E

3/4" X 24" STEEL BAR WITH 2 1/2" ALUMINUM CAP STAMPED PA 345 INGHAM COUNTY PS25837 IN 2" IRON PIPE

NAIL & KEBS TAG EAST SIDE 39" OAK	SOUTH	12.33'
NAIL & TAG NORTH SIDE 24" OAK	S15°E	396.48'
NAIL & TAG NORTH SIDE 18" HICKORY	N80°E	422.88'
NAIL & KEBS TAG WEST SIDE 36" CHERRY	NORTH	194.01'

Signed by David L. Clifford

Date MAY 06, 2004

Surveyor's Michigan License No. 25837

FORM APPROVED BY MICHIGAN STATE BOARD OF PROFESSIONAL SURVEYORS, JAN. 28, 1971
REVISED MAY 14, 1976
REVISED JAN. 1993
REVISED OCT., 1995

PEER APPROVED
P.A. 345 INGHAM COUNTY



P.A. 345 INGHAM COUNTY
PEER APPROVED 5/11/2004 RL

**SOUTHWEST CORNER SECTION 32
STOCKBRIDGE TOWNSHIP
LAND CORNER RECORDATION CERTIFICATE
Filing Requirement of Act 74, Mich. P.A. 1970**

For corners in

INGHAM

(County)

Located In:

Corner Code #

1. Public Land Survey

T 1N R 2E

C-13

2. Property Controlling
in Section

S
S

T
T
T

3. Miscellaneous
Property in Sec.

S
S

T
T
T

Paula Johnson
INGHAM COUNTY
REGISTER OF DEEDS
OFFICIAL SEAL



L-11 P-89

CRNR 14.00

2003-102192



2003-102192

Page: 1 of 1

11/25/2003 08:38A

Register of Deeds Stamp & File Number

4. Lot No. , Recorded Plat

5. Private Claims

I, DAVID L. CLIFFORD, in a field survey on JUNE 3, 2003 do hereby state that under requirements of P.A. 74, Michigan P.A. of 1970, the corner points mentioned in lines 1 and 2 above were in conformance with regulations and rules therefore as required in the current manual of survey instructions of the United States Department of the Interior, Bureau of Land Management or by a decree of a Court of Law and for that the corner points mentioned in lines 3, 4 and 5 above were in conformance with the rules of the Michigan Board of Land Surveyors or by a Decree of a Court of Law; established, re-established, monumented, recovered, found as expressed below:

NOTE: Not more than 2 corners, all in the same town and range, may be recorded on this certificate.

A. Description of original monument and accessories and/or subsequent restoration:

1. JOSEPH WAMPLER, DEPUTY SURVEYOR, SET POST IN ORIGINAL GOVERNMENT SURVEY IN NOVEMBER, 1825 WITH THE FOLLOWING WITNESSES: HICKORY 12, N35W, 35; ASH 10, N36E, 30.

2. JOHN MCCREARY, COUNTY SURVEYOR, RECORDED CORNER IN VOLUME 3, PAGES 215, ON FEBRUARY 17, 1890 AS CAST IRON IN PIECES, W OAK 24, N2 1/2E, 37 1/2 AND W OAK 22, S 35 1/4 W, 54 1/2.

3. CONSUMERS POWER NOTES SHOW CORNER AS A SET "T" IRON IN CENTER OF ROAD IN LINE WITH FENCES TO NORTH WITH THE FOLLOWING WITNESSES: 40" OAK, NORTH, 20.15'; 8" HICKORY, SOUTHEAST, 38.0'; 16" OAK, NORTHEAST, 49.5'

4. R. LESTER, RLS 18998, RECORDED CORNER UNDER ACT 74 IN LIBER 5 PAGE 250 ON JUNE 14, 1979, PART B OF THIS LCRC READS: FOUND A PLOW POINT AND PIECES OF CAST IRON 0.5' BELOW ROAD SURFACE, + 6' SOUTH OF CENTERLINE BASELINE ROAD AND + 5' EAST OF FENCE LINE TO NORTH. ACCEPTED PLOW POINT AND PIECE OF CAST IRON FOR CORNER AS CALLED FOR IN SURVEY BY JOHN MCCREARY: SET 4"X36" CONCRETE MONUMENT; NAIL & TAG 18998. SOUTH SIDE 32" OAK, NW, 54.39'; NAIL & TAG 18998 SOUTHWEST SIDE 48" OAK, NORTH, 25.83'; NAIL & TAG 18998, SOUTH SIDE 24" OAK, NE, 47.05'; NAIL & TAG 18998, NORTH SIDE 28" MAPLE, ESE, 76.61'

5. BRUCE ANTCLIFF, RLS 25826, USED CORNER IN ACT 132 SURVEYS RECORDED IN LIBER 5 PAGES 611-613, LIBER 5 PAGES 614-615 AND LIBER 5 PAGES 616-617 WITH THE SAME WITNESSES AS ITEM 4 ABOVE.

6. R. LESTER, RLS 18998, RECORDED CORNER UNDER ACT 74 IN LIBER 10 PAGE 18 ON OCTOBER 31, 2000, PART B OF THIS LCRC READS: FOUND 1" PIPE IN MONUMENT BOX. INVESTIGATION REVEALED THIS CORNER RAISED BY D. GUTEKUNST WHEN ROAD WAS RECONSTRUCTED. DIMENSIONS EAST AND WEST COMPARE WITH SUPER CONDUCTING SUPERCOLLIDER DATA TAKEN IN 1988. CORNER OCCUPIES POSITION OF CONCRETE MONUMENT.

B. Description of corner evidence found and/or method applied in restoring or reestablishing corner:

FIELD INVESTIGATION AT APPARENT LOCATION OF CORNER REVEALED A 3/4" PIPE IN MONUMENT BOX 4.5' SOUTH OF CENTERLINE BASELINE ROAD, 312.6' EAST OF A HARRISON MONUMENT IN A MONUMENT BOX AT B-1, T1S R2E. PIPE IS ON TOP OF CONCRETE MONUMENT. ACCEPTED PIPE AS PERPETUATION OF CORNER BASED ON R. LESTER'S REPORTS OF CONDITIONS FOUND IN HIS 2 LCRC'S AND CAPPED IT WITH 2 1/4" ALUMINUM CAP. MEASURED NORTH 2669.60' TO C-12, EAST 2643.08' TO D-13, WEST 2651.88' TO B-13. MEASUREMENTS ARE FROM SUPER COLLIDER TRAVERSE OF 1988 AND TRAVERSE WORK CONDUCTED IN JANUARY 2003 FOR JACKSON COUNTY REMONUMENTATION AND PRIVATE SURVEYS.

C. Description of monument for corner and accessories established to perpetuate locating the position of the corner:

C-13 T1NR2E

3/4" PIPE & 2 1/4" ALUMINUM CAP STAMPED PA345 PS25837 IN MONUMENT BOX

NAIL & TAG 25837 EAST SIDE UTILITY POLE

CUT "+" CENTERLINE WEST END 12" CMP

CUT "+" CENTERLINE EAST END 12" CMP

NAIL & TAG 25837 SOUTH SIDE FENCE POST

CENTERLINE 12" CONCRETE CULVERT

CAST IRON MONUMENT IN MONUMENT BOX (B-1 T1S, R2E)

N25°E 232.37'

N70°E 66.78'

S15°W 97.87'

N80°W 137.75'

N20°E 35.74'

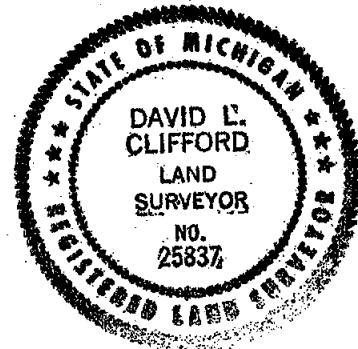
WEST 312.60'

Signed by

David L. Clifford

Date JULY 29, 2003

Surveyor's Michigan License No. 25837



FORM APPROVED BY MICHIGAN STATE BOARD OF PROFESSIONAL SURVEYORS, JAN. 29, 1971
REVISED MAY 14, 1975
REVISED JAN. 1985
REVISED OCT. 1995

P.A. 345 INGHAM COUNTY

PEER APPROVED

9/30/2003 *MC*

LAND CORNER RECORDATION CERTIFICATE
Filing Requirement of Act 74, Mich. P.A. 1970

For corners in

INGHAM
(County)
STOCKBRIDGE TOWNSHIP

Located in:

Corner Code #

1. Public Land Survey

T 1N R 2E

D 11

Paula Johnson-
INGHAM COUNTY
REGISTER OF DEEDS
OFFICIAL SEAL



L-11 P-226

CRNR 14.00

2004-060653



2004-060653

Page: 1 of 1

09/23/2004 10:36 A

2. Property Controlling
in Section

S

T R

3. Miscellaneous
Property in Sec.

S

T R

4. Lot No. , Recorded Plat

5. Private Claims

Register of Deeds Stamp & File Number

I, DAVID L. CLIFFORD, in a field survey on MARCH 31, 2004 do hereby state that under requirements of P.A. 74, Michigan P.A. of 1970, the corner points mentioned in lines 1 and 2 above were in conformance with regulations and rules therefore as required in the current manual of survey instructions of the United States Department of the Interior, Bureau of Land Management or by a decree of a Court of Law and /or that the corner points mentioned in lines 3, 4 and 5 above were in conformance with the rules of the Michigan Board of Land Surveyors or by a Decree of a Court of Law; established, re-established, monumented, recovered, found as expressed below:

NOTE: Not more than 2 corners, all in the same town and range, may be recorded on this certificate.

A. Description of original monument and accessories and/or subsequent restoration:

1. JOSEPH WAMPLER, DEPUTY SURVEYOR, SET POST IN ORIGINAL GOVERNMENT SURVEY IN NOVEMBER, 1825 AT AVERAGE DISTANCE WITH NO WITNESSES.

2. RON ENGER, PS 28409, RECORDED CORNER UNDER ACT 74 IN LIBER 7 PAGE 62 ON JANUARY 30, 1989 "SEARCHED AT APPARENT LOCATION FOR CORNER. DID NOT FIND ANY EVIDENCE OF ORIGINAL POST. DID NOT FIND ANY EVIDENCE OF SUBSEQUENT RESTORATION. FOUND FENCE CORNER POST (FENCES TO NORTH, EAST AND WEST). ACCEPTED FENCE CORNER POST AS BEST AVAILABLE EVIDENCE OF CORNER POSITION. SET 1/2" REBAR AND CAP LS# 28409 ON SOUTH SIDE OF FENCE CORNER POST AS CORNER. USED 1/2" REBAR AND CAP AS CORNER MONUMENT" WITH THE FOLLOWING WITNESSES: 1/2" REBAR WITH CAP; NAIL & TAG EAST SIDE 12" SPLIT CHERRY, N2W, 14.28'; NAIL & TAG SOUTH SIDE 12" ELM, N78W, 9.51'; NAIL & TAG NORTHEAST SIDE 10" ELM, S16E, 3.35'

3. BRUCE ANTCLIFF, RLS 25826, USED CORNER IN AN ACT 132 SURVEY RECORDED IN LIBER 5 PAGES 611-613 ON JANUARY 30, 1989 WITH THE SAME WITNESSES AS ITEM 2 ABOVE.

5. GLENN FAUSER, PS 18657, USED CORNER IN AN UNRECORDED ACT 132 SURVEY IN AUGUST 1999 WITH A REFERENCE TO LIBER 5 PAGE 613

B. Description of corner evidence found and/or method applied in restoring or reestablishing corner:

FIELD INVESTIGATION AT APPARENT LOCATION OF CORNER REVEALED A 1/2" BAR & CAP AT RAILROAD TIE FENCE POST 10' EAST & 10' NORTH OF DRAIN INTERSECTION. ACCEPTED FOUND MONUMENTATION AS PERPETUATION OF CORNER AND REPLACED IT WITH STANDARD BAR & CAP. AFTER REVIEW OF THE SUPER COLLIDER TRAVERSE OF 1988 DETERMINED THAT CORNER SHOULD BE IN THE CENTER OF THE DRAIN 10 FEET TO THE SOUTH OF MONUMENT. THIS POSITION IS ON LINE BETWEEN NORTHEAST AND NORTHWEST SECTION CORNERS. LEFT STANDARD BAR & CAP IN PLACE AS A WITNESS MONUMENT ON NORTH-SOUTH 1/4 LINE 10 FEET NORTH OF TRUE CORNER LOCATION. MEASURED WEST 2854.19 TO C-11, EAST 2652.23 FEET TO E-11 AND SOUTH 2655.36 FEET TO D-12. MEASUREMENTS ARE FROM SUPER COLLIDER TRAVERSE OF 1988 AND ARE TO TRUE CORNER POSITION.

C. Description of monument for corner and accessories established to perpetuate locating the position of the corner:

3/4"x24" STEEL BAR WITH 2 1/4" ALUMINUM CAP STAMPED INGHAM COUNTY PA 345 PS 25837 (WITNESS MONUMENT ON NORTH-SOUTH 1/4 LINE 10 FEET NORTH OF CORNER)

NAIL & TAG "KEBS" SE SIDE 15" CHERRY

NAIL & TAG "KEBS" SOUTH SIDE 6" CHERRY

NAIL & TAG "KEBS" EAST SIDE 10" CHERRY

NAIL & TAG "KEBS" SOUTH SIDE 14" CHERRY

N40E 24.42'

N78E 16.40'

SOUTH 32.30'

N70W 9.57'

Signed by

David L. Clifford

Date APRIL 6, 2004

Surveyor's Michigan License No. 25837



FORM APPROVED BY MICHIGAN STATE BOARD OF PROFESSIONAL SURVEYORS, JAN. 28, 1971
REVISED MAY 14, 1975
REVISED JAN, 1983
REVISED OCT, 1986

P.A. 345 INGHAM COUNTY

PEER APPROVED 9/30/2003 ML

Not

CENTER SECTION 32
STOCKBRIDGE TOWNSHIP
LAND CORNER RECORDATION CERTIFICATE
Filing Requirement of Act 74, Mich. P.A. 1970

For corners in

INGHAM
(County)

Located in:

Corner Code #

1. Public Land Survey

T 1N R 2E

D-12

T R

T R

T R

T R

T R

T R

T R

2. Property Controlling
in Section

S

T R

S

T R

3. Miscellaneous
Property in Sec.

S

T R

S

T R

Paula Johnson
INGHAM COUNTY
REGISTER OF DEEDS
OFFICIAL SEAL



L-11 P-88

CRNR 14.00

2003-102191

2003-102191

Page: 1 of 1

11/25/2003 08:38A

Register of Deeds Stamp & File Number

4. Lot No. _____, Recorded Plat _____
5. Private Claims _____

I, DAVID L. CLIFFORD, in a field survey on JUNE 3, 2003 do hereby state that under requirements of P.A. 74, Michigan P.A. of 1970, the corner points mentioned in lines 1 and 2 above were in conformance with regulations and rules therefore as required in the current manual of survey instructions of the United States Department of the Interior, Bureau of Land Management or by a decree of a Court of Law and /or that the corner points mentioned in lines 3, 4 and 5 above were in conformance with the rules of the Michigan Board of Land Surveyors or by a Decree of a Court of Law; established, re-established, monumented, recovered, found as expressed below:

NOTE: Not more than 2 corners, all in the same town and range, may be recorded on this certificate.

A. Description of original monument and accessories and/or subsequent restoration:

1. POST NOT SET IN ORIGINAL GOVERNMENT SURVEY.

2. RON ENGER, PS 28409, RECORDED CORNER UNDER ACT 74 IN LIBER 7 PAGE 63 ON JANUARY 30, 1989 "ESTABLISHED CORNER POSITION AT INTERSECTION OF EAST-WEST AND NORTH-SOUTH 1/4 LINES. SET 1/2" REBAR AND CAP LS #28409 TO MONUMENT CORNER: 1/2" REBAR & CAP 28409; NAIL & TAG SOUTH SIDE 30"

ELM, N70W, 20.6'; NAIL & TAG SOUTHEAST SIDE 12" CHERRY, S80W, 19.05'; NAIL & TAG NORTH SIDE 8" POPLAR, S75W, 24.6'

3. BRUCE ANTCLIFF, RLS 25826, USED CORNER IN AN ACT 132 SURVEY RECORDED IN LIBER 5 PAGES 611-613 ON JANUARY 30, 1989 WITH THE SAME WITNESSES AS ITEM 2 ABOVE.

B. Description of corner evidence found and/or method applied in restoring or reestablishing corner:

FIELD INVESTIGATION AT APPARENT LOCATION OF CORNER REVEALED A 1/2" BAR & CAP LS 28409 AT A BEND IN A DRAINAGE DITCH ON CENTERLINE OF DITCH TO WEST & 12' EAST OF DITCH TO NORTH. ACCEPTED BAR & CAP AS CORNER AS ESTABLISHED BY ENGER AND REPLACED IT WITH STANDARD 3/4" BAR & ALUMINUM CAP. MEASURED NORTH 2665.64' TO D-11, SOUTH 2666.80' TO D-13, WEST 2649.95' TO C-12, AND EAST 2647.66' TO E-12. MEASUREMENTS ARE FROM THE SUPER COLLIDER TRAVERSE OF 1988.

C. Description of monument for corner and accessories established to perpetuate locating the position of the corner:

D-12 T1NR2E

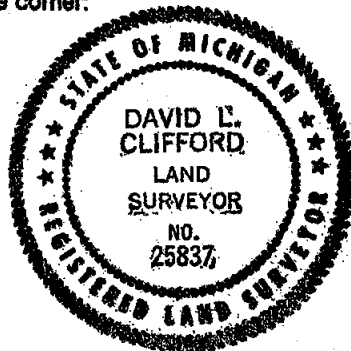
3/4" X 24" STEEL BAR & 2 1/4" ALUMINUM CAP STAMPED PA345 PS25837 INGHAM COUNTY

NAIL & KEBS TAG SOUTH SIDE 6" CHERRY N75°E 9.39'

NAIL & KEBS TAG SOUTH SIDE 17" CHERRY S70°W 16.11'

NAIL & TAG 25837 SOUTH SIDE 12" TRIPLE MAPLE S85°W 61.94'

NAIL & KEBS TAG EAST SIDE 6" CHERRY NORTH 26.02'



Signed by

David L. Clifford

Date JULY 29, 2003

Surveyor's Michigan License No. 25837

FORM APPROVED BY MICHIGAN STATE BOARD OF PROFESSIONAL SURVEYORS, JAN. 28, 1971
REVISED MAY 14, 1975
REVISED JAN, 1983
REVISED OCT., 1995

P.A. 345 INGHAM COUNTY
PEER APPROVED 9/30/2003 *M*

**SOUTH 1/4 CORNER SECTION 32
STOCKBRIDGE TOWNSHIP
LAND CORNER RECORDATION CERTIFICATE
Filing Requirement of Act 74, Mich. P.A. 1970**

For corners in

INGHAM

(County)

Located In:

Corner Code #

1. Public Land Survey

T 1N R 2E

D-13

T R

T R

T R

T R

2. Property Controlling
in Section

S T R

S T R

3. Miscellaneous
Property in Sec.

S T R

S T R

Paula Johnson
INGHAM COUNTY
REGISTER OF DEEDS
OFFICIAL SEAL



L-11 P-90

CRNR 14.00

2003-102193

2003-102193

Page: 1 of 1

11/25/2003 08:38A

Register of Deeds Stamp & File Number

4. Lot No. _____, Recorded Plat _____

5. Private Claims _____

I, DAVID L. CLIFFORD, in a field survey on JUNE 3, 2003 do hereby state that under requirements of P.A. 74, Michigan P.A. of 1970, the corner points mentioned in lines 1 and 2 above were in conformance with regulations and rules therefore as required in the current manual of survey instructions of the United States Department of the Interior, Bureau of Land Management or by a decree of a Court of Law and /or that the corner points mentioned in lines 3, 4 and 5 above were in conformance with the rules of the Michigan Board of Land Surveyors or by a Decree of a Court of Law; established, re-established, monumented, recovered, found as expressed below:

NOTE: Not more than 2 corners, all in the same town and range, may be recorded on this certificate.

A. Description of original monument and accessories and/or subsequent restoration:

1. JOSEPH WAMPLER, DEPUTY SURVEYOR, SET POST IN ORIGINAL GOVERNMENT SURVEY IN NOVEMBER, 1825 WITH THE FOLLOWING WITNESS: B OAK 16, N16 1/4W, 632.

2. H.F. BEAN, JACKSON COUNTY SURVEYOR, CALLS THIS CORNER TO BE 469 (309.50') LINKS EAST OF NW CORNER OF SECTION 5, T1S, R2E IN THE "JACKSON COUNTY WATERLOO TWP. BOOK" IN NOV. 1888.

3. JOHN K. YOKUM, WASHTENAW COUNTY SURVEYOR, IN HIS BOOK OF STOCKBRIDGE WITNESSES (FOUND IN HIS PERSONAL NOTES WHICH ARE NOW IN THE POSSESSION OF WOLVERINE ENGINEERS AND SURVEYORS OF MASON) SHOWS CORNER TO BE 469 LINKS (309.50') EAST OF NW CORNER OF SECTION 5, T1S, R2E.

4. RON ENGER, PS 28409, RECORDED CORNER UNDER ACT 74 IN LIBER 7 PAGE 64 ON JANUARY 30, 1989 "SEARCHED AT PROBABLE LOCATION FOR CORNER APPROXIMATELY 1/2 MILE EAST OF THE SE CORNER OF SECTION 31 (C-13, T1NR2E) AS RECORDED IN LIBER 5, PAGE 250. DID NOT FIND ANY EVIDENCE OF ORIGINAL POST OR ITS ACCESSORIES. DID NOT FIND ANY EVIDENCE OF OTHER LINES OF OCCUPATION TO INDICATE THE POSITION OF THE ORIGINAL CORNER. CORNER POSITION IS IN A DRAIN. CORNER EVIDENCE DESTROYED BY DITCHING ACTIVITIES. CONSIDERED CORNER TO BE LOST. RE-ESTABLISHED POSITION FOR CORNER BY SINGLE PROPORTIONATE MEASURE BETWEEN F-13, T1NR2E, A "T" IRON, FOUND AND ACCEPTED (SEE MY CRC F-13, SAME DATE AS THIS) AND C-13. SET 1 1/4" X 3' PIPE TO MONUMENT CORNER. MEASURED DISTANCE TO C-13 IS 2643.08' AND TO F-13 IS 5286.16'. FIELDWORK FOR RE-ESTABLISHMENT OF THIS CORNER WAS PERFORMED BY DAVID L. CLIFFORD, LS#25837: 1 1/4" PIPE; NAIL & CAP 25837, 8" BASSWOOD, S57E, 30.34'; NAIL & CAP 25837, 40" OAK, N29W, 413.45'; NAIL & CAP 25837, 28" POPLAR, N46W, 537.01'; 1 1/4" PIPE (C-1, T1SR2E), WEST, 309.5'; CORNER FALLS IN BOTTOM OF DRAIN, 4' NORTH OF CENTERLINE

5. BRUCE ANTCLIFF, RLS 25826, USED CORNER IN AN ACT 132 SURVEYS RECORDED IN LIBER 5 PAGES 611-613 AND LIBER 5 PAGES 616 & 617 ON JANUARY 30, 1989 WITH THE SAME WITNESSES AS ITEM 4 ABOVE.

B. Description of corner evidence found and/or method applied in restoring or reestablishing corner:

FIELD INVESTIGATION AT APPARENT LOCATION OF CORNER REVEALED A 1 1/4" GALVANIZED PIPE 4' NORTH OF CENTERLINE DRAINAGE DITCH 309.5' EAST OF C-1 T1SR2E (1 1/4" PIPE WITH 3" ALUMINUM CAP). TRAVERSE OF COUNTY LINE REVEALED THAT PIPE WAS IN POSITION I HAD SET IT IN 1988. ACCEPTED FOUND MONUMENTATION AS PERPETUATION OF CORNER AND CAPPED IT WITH 2 1/4" ALUMINUM CAP. MEASURED NORTH 2666.80' TO D-12, WEST 2643.08' TO C-13, AND EAST 2643.08' TO E-13.

C. Description of monument for corner and accessories established to perpetuate locating the position of the corner:

D-13 T1NR2E

1 1/4" PIPE & 2 1/4" ALUMINUM CAP STAMPED PA345 PS25837 INGHAM COUNTY

NAIL & KEBS TAG WEST SIDE RR TIE FENCE POST N12°E 15.7'

NAIL & TAG 25837 WEST SIDE RR TIE FENCE POST N11°W 16.2'

NAIL & TAG 25837 EAST SIDE UTILITY POLE N3°W 211.73'

SOUTH EAST CORNER HOUSE FOUNDATION N18°W 223.96'

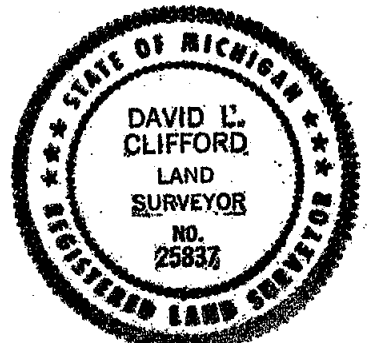
1 1/4" PIPE WITH 3" ALUMINUM JACKSON COUNTY ALUMINUM CAP (C-1 T1S, R2E) WEST 309.50'

Signed by

David L. Clifford

Date JULY 29, 2003

Surveyor's Michigan License No. 25837



FORM APPROVED BY MICHIGAN STATE BOARD OF PROFESSIONAL SURVEYORS, JAN. 28, 1971
REVISED MAY 14, 1976
REVISED JAN. 1983
REVISED OCT., 1996

P.A. 345 INGHAM COUNTY
PEER APPROVED 9/30/2003 M

**NORTHWEST CORNER SECTION 33
STOCKBRIDGE TOWNSHIP
LAND CORNER RECORDATION CERTIFICATE
Filing Requirement of Act 74, Mich. P.A. 1970**

For corners in

INGHAM
(County)

Located In:

Corner Code #

1. Public Land Survey

T 1N R 2E

E-11

T R

T R

T R

T R

2. Property Controlling
in Section

S

T R

S

T R

3. Miscellaneous
Property in Sec.

S

T R

S

T R

Paula Johnson
INGHAM COUNTY
REGISTER OF DEEDS
OFFICIAL SEAL



L-11 P-91

CRNR 14.00

2003-102194

2003-102194

Page: 1 of 1

11/25/2003 08:38A

Register of Deeds Stamp & File Number

4. Lot No. _____, Recorded Plat _____

5. Private Claims _____

I, DAVID L. CLIFFORD, in a field survey on JUNE 3, 2003 do hereby state that under requirements of P.A. 74, Michigan P.A. of 1970, the corner points mentioned in lines 1 and 2 above were in conformance with regulations and rules therefore as required in the current manual of survey instructions of the United States Department of the Interior, Bureau of Land Management or by a decree of a Court of Law and/or that the corner points mentioned in lines 3, 4 and 5 above were in conformance with the rules of the Michigan Board of Land Surveyors or by a Decree of a Court of Law; established, re-established, monumented, recovered, found as expressed below:

NOTE: Not more than 2 corners, all in the same town and range, may be recorded on this certificate.

A. Description of original monument and accessories and/or subsequent restoration:

1. JOSEPH WAMPLER, DEPUTY SURVEYOR, SET POST IN ORIGINAL GOVERNMENT SURVEY IN NOVEMBER, 1825 WITH THE FOLLOWING WITNESSES: B OAK 8, S55 1/2E, 191; B OAK 18, N79W, 186.

2. GEORGE YOUNG, RLS 17640, RECORDED CORNER UNDER ACT 74 IN LIBER 4 PAGE 249 ON JULY 13, 1978: FOUND OLD ANCHOR POST; SET 1/2" X 24" REROD W/CAP BESIDE ANCHOR POST; #16 NAIL IN 4" ASH, N45W, 3.5'; #16 NAIL IN 6" ELM, NORTH, 24.2'; #16 NAIL IN 6" CHERRY, N60E, 10.6';

3. BRUCE ANTCLIFF, RLS 25826, USED CORNER IN AN ACT 132 SURVEY RECORDED IN LIBER 5 PAGE 663 IN NOVEMBER 1988 WITH THE SAME MONUMENT AND WITNESSES AS ITEM 2 ABOVE.

4. GLENN FAUSER, RLS 18657, USED CORNER IN 2 UNRECORDED ACT 132 SURVEYS WITH NO MENTION OF MONUMENT OR WITNESSES.

B. Description of corner evidence found and/or method applied in restoring or reestablishing corner:

FIELD INVESTIGATION AT APPARENT LOCATION OF CORNER REVEALED A 1/2" BAR AT AN ANCIENT CORNER FENCE POST AGREEING WITH ALL OF YOUNG'S WITNESSES, 2 OF WHICH ARE NOW DEAD. ACCEPTED FOUND MONUMENTATION AS PERPETUATION OF CORNER AND REPLACED IT WITH STANDARD BAR AND ALUMINUM CAP. MEASURED WEST 2652.23' TO D-11, SOUTH 2684.04' TO E-12 AND EAST 2643.71' TO F-11.

C. Description of monument for corner and accessories established to perpetuate locating the position of the corner:

E-11 T1NR2E

3/4"X24" STEEL BAR WITH 2 1/4" ALUMINUM CAP STAMPED PA 345 PS 25837 INGHAM COUNTY

NAIL & TAG 25837 NORTH SIDE 14" TWIN CHERRY

N70°E 11.10'

NAIL & TAG 25837 WEST SIDE 13" CHERRY

S40°W 9.96'

NAIL & TAG 25837 NORTH SIDE 15" CHERRY

N85°W 12.37'

NAIL & KEBS TAG WEST SIDE 8" CHERRY

N5°W 22.25'



Signed by

David L. Clifford

Date JULY 29, 2003

Surveyor's Michigan License No. 25837

FORM APPROVED BY MICHIGAN STATE BOARD OF PROFESSIONAL SURVEYORS, JAN. 28, 1971
REVISED MAY 14, 1976
REVISED JAN. 1983
REVISED OCT. 1985

P.A. 345 INGHAM COUNTY
PEER APPROVED 9/30/2003 AL

LAND CORNER RECORDATION CERTIFICATE
Filing Requirement of Act 74, Mich. P.A. 1970

For corners in

INGHAM Located In: Corner Code #
(County)
STOCKBRIDGE TOWNSHIP

1. Public Land Survey T 1N R 2E E-12
T R
T R
T R
2. Property Controlling S T R
in Section S T R
3. Miscellaneous S T R
Property in Sec. S T R

Paula Johnson-
INGHAM COUNTY
REGISTER OF DEEDS
OFFICIAL SEAL



L-11 P-230

CRNR 17.00

2004-060657



2004-060657

Page: 1 of 2

09/23/2004 10:36 A

Register of Deeds Stamp & File Number

4. Lot No. , Recorded Plat
5. Private Claims

I, DAVID L. CLIFFORD, in a field survey on MAY 14, 2003 AND MARCH 31, 2004 do hereby state that under requirements of P.A. 74, Michigan P.A. of 1970, the corner points mentioned in lines 1 and 2 above were in conformance with regulations and rules therefore as required in the current manual of survey instructions of the United States Department of the Interior, Bureau of Land Management or by a decree of a Court of Law and for that the corner points mentioned in lines 3, 4 and 5 above were in conformance with the rules of the Michigan Board of Land Surveyors or by a Decree of a Court of Law, established, re-established, monumented, recovered, found as expressed below:

NOTE: Not more than 2 corners, all in the same town and range, may be recorded on this certificate.

A. Description of original monument and accessories and/or subsequent restoration:

1. JOSEPH WAMPLER, DEPUTY SURVEYOR, SET POST IN ORIGINAL GOVERNMENT SURVEY IN NOVEMBER, 1825 WITH THE FOLLOWING WITNESSES: W OAK 40, N12 1/4W, 52 1/2 LKS; W OAK 26, S47W, 167 LKS.

2. RON ENGER, PS 28409 RECORDED CORNER UNDER ACT 74 IN LIBER 7 PAGE 69 WITH THE FOLLOWING INFORMATION: "CORNER WAS SEARCHED FOR DURING THE INGHAM COUNTY SURVEY AND REMONUMENTATION PROJECT. PROJECT RECORDS SHOW A 2' DEEP EXCAVATION, 7' EAST AND WEST DIMENSION, CENTERED ON THE N-S FENCE LINE AND 25' NORTH AND SOUTH DIMENSION FROM THE NORTH EDGE OF BASELINE RD. TO 2' SOUTH OF THE SOUTH EDGE, WAS MADE AND ON 11-23-77 A LARGE ROCK WAS FOUND 0.5' BELOW THE ROAD SURFACE AND A 1/2" REROD AND INGHAM CO. TEMP. PT. CAP WAS SET IN PLACE OF THE ROCK. NO OTHER EVIDENCE WAS FOUND IN THE EXCAVATIONS. THE FOLLOWING IS PROJECT SURVEYOR, RON LESTER'S, 6-1-79 EVALUATION OF CORNER EVIDENCE. "PUT IN LOST CORNER CLASSIFICATION, CHECK STONE FOUND IN 1977 EXCAVATION FOR DISTANCES. MAY BE POSSIBLE MONUMENTATION BUT MUST BE VERIFIED." IN 1988 WE FOUND THE 1/2" REROD WITH INGHAM TEMP. PT. CAP AND MEASURED NORTH 2687.5' TO E-11, AS RECORDED IN L. 4, PG. 249 AND SOUTH 2640.5' TO E-13 AS RE-ESTABLISHED (SEE MY CRC DATED SAME AS THIS ONE). DID NOT ACCEPT THE ROCK. CONSIDERED CORNER LOST. RE-ESTABLISHED CORNER POSITION BY SINGLE PROPORTIONATE MEASURE. SET 1/2" REBAR AND CAP LS# 28409 TO MONUMENT CORNER." 1/2" REROD AND CAP "INGHAM CO. TEMP. PT.", S12E, 23.85'; NAIL & TAG WEST SIDE 12" HICKORY, S15E, 33.9'; NAIL & TAG EAST SIDE 12" HICKORY, S15W, 29.0'; CORNER IS 12' NORTH OF CENTERLINE BASELINE ROAD.

3. GLENN FAUSER, PS 18657, USED CORNER IN AN UNRECORDED ACT 132 SURVEY ON JUNE 21, 2001: RESET WITH CAP/REBAR FROM WITNESSES (L7, P.69); 16" HICKORY, S15E, 33.90'; FOUND CAPPED REBAR (UNREADABLE), S12E, 23.85'; SPIKE, E SIDE 12" CHERRY, N45W, 37.25'; SPIKE N SIDE 24" OAK, S50W, 57.49'

B. Description of corner evidence found and/or method applied in restoring or reestablishing corner:

FIELD INVESTIGATION AT APPARENT LOCATION OF CORNER REVEALED A 1/2" BAR AND CAP "GAF #18657" IN NORTH EDGE OF BASELINE ROAD ON FENCE LINE TO SOUTH & NORTH MATCHING ENGER & FAUSER WITNESSES. FOUND MONUMENTATION IS ON LINE WITH EAST-WEST OCCUPATION WHICH BEGINS 1/4 MILE EAST & WEST OF CORNER POSITION (SEE BACK OF FORM). DID NOT EXCAVATE BECAUSE OF PREVIOUS EXCAVATION. ACCEPTED FOUND MONUMENTATION AS PERPETUATION OF CORNER AND REPLACED IT WITH STANDARD 3/4" BAR AND 2 1/4" ALUMINUM CAP. MEASURED N00°50'26"E 2664.04' TO E-11, S89°52'50"W 2647.66' TO D-12, N89°57'59"E 2643.40' TO F-12, AND S00°50'26"W 2664.04' TO E-13. MEASUREMENTS ARE FROM THE SUPER COLLIDER TRAVERSE OF 1988.

C. Description of monument for corner and accessories established to perpetuate locating the position of the corner:

E-12 T1NR2E

3/4"x24" STEEL BAR WITH 2 1/4" ALUMINUM CAP STAMPED PA 345 PS 25837 INGHAM COUNTY

NAIL & KEBS TAG EAST SIDE 18" CHERRY	N12°E	42.54'
NAIL & KEBS TAG WEST SIDE 16" HICKORY	S25°E	33.99'
1/2" BAR & INGHAM CO. TEMP. PT. CAP	S 5°E	23.88'
20D SPIKE NORTH SIDE 35" OAK	S58°W	51.60'
NAIL & TAG 25837 NE SIDE 11" HICKORY	N50°W	28.56'
20D SPIKE EAST SIDE 13" CHERRY	N40°W	37.47'

Signed by David L. Clifford

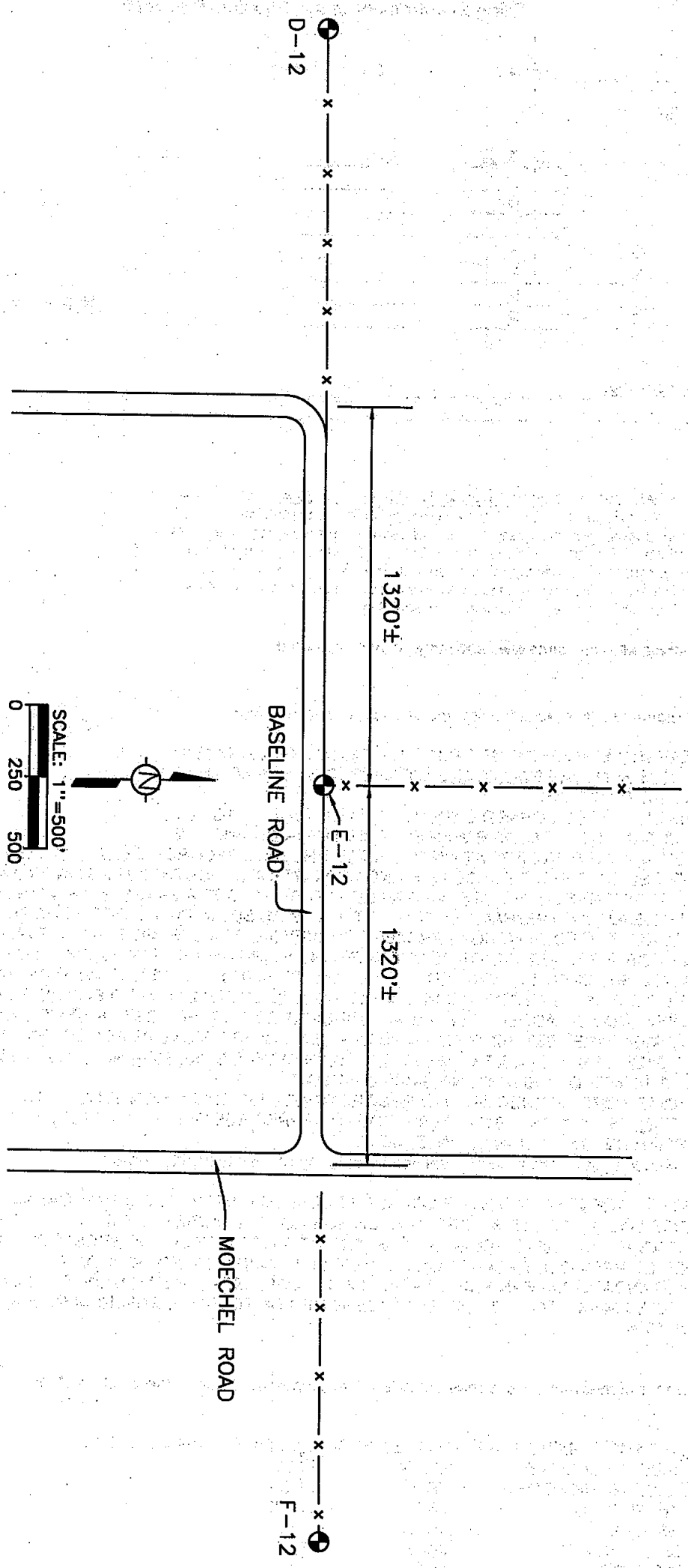
Date SEPTEMBER 16, 2003

Surveyor's Michigan License No. 25837



FORM APPROVED BY MICHIGAN STATE BOARD OF PROFESSIONAL SURVEYORS, JAN. 28, 1971
REVISED MAY 14, 1976
REVISED JAN, 1993

P.A. 345 INGHAM COUNTY
PEER APPROVED 5/11/2004 M



SCALE: 1"=500'
0 250 500



**SOUTHWEST CORNER SECTION 33
STOCKBRIDGE TOWNSHIP
LAND CORNER RECORDATION CERTIFICATE
Filing Requirement of Act 74, Mich. P.A. 1970**

For corners in

INGHAM

(County)

Located In:

Corner Code #

1. Public Land Survey

T 1N R 2E

E-13

T R

T R

T R

2. Property Controlling
in Section

S

T R

S

T R

3. Miscellaneous
Property in Sec.

S

T R

S

T R

Paula Johnson
INGHAM COUNTY
REGISTER OF DEEDS
OFFICIAL SEAL



L-11 P-100

CRNR 14.00

2003-102823



2003-102823

Page: 1 of 1

12/01/2003 09:18A

Register of Deeds Stamp & File Number

4. Lot No. _____, Recorded Plat _____

5. Private Claims _____

I, DAVID L. CLIFFORD, in a field survey on JUNE 3, 2003 do hereby state that under requirements of P.A. 74, Michigan P.A. of 1970, the corner points mentioned in lines 1 and 2 above were in conformance with regulations and rules therefore as required in the current manual of survey instructions of the United States Department of the Interior, Bureau of Land Management or by a decree of a Court of Law and for that the corner points mentioned in lines 3, 4 and 5 above were in conformance with the rules of the Michigan Board of Land Surveyors or by a Decree of a Court of Law; established, re-established, monumented, recovered, found as expressed below:

NOTE: Not more than 2 corners, all in the same town and range, may be recorded on this certificate.

A. Description of original monument and accessories and/or subsequent restoration:

1. JOSEPH WAMPLER, DEPUTY SURVEYOR, SET POST IN ORIGINAL GOVERNMENT SURVEY IN NOVEMBER, 1825 WITH THE FOLLOWING WITNESSES: ELM 16, N24E, 655 LKS; ELM 16, N2 1/2E, 620 LKS.

2. RON ENGER, PS 28409, RECORDED CORNER UNDER PA 74 IN LIBER 7 PAGE 70 WITH THE FOLLOWING INFORMATION: SEARCHED AT PROBABLE LOCATION FOR CORNER APPROXIMATELY 1 MILE EAST OF THE SE CORNER OF SECTION 33 (C-13, T1N, R2E) AS RECORDED IN LIBER 5, PAGE 250. DID NOT FIND ANY EVIDENCE OF ORIGINAL POST OR ITS ACCESSORIES. DID NOT FIND ANY EVIDENCE OF SUBSEQUENT MONUMENTATION OF THE CORNER POSITION. DID NOT FIND ANY FENCE LINES OR OTHER LINES OF OCCUPATION TO INDICATE THE POSITION OR THE ORIGINAL CORNER. CORNER POSITION IS IN A CULTIVATED FIELD AND CLOSE TO A DRAIN. CORNER EVIDENCE DESTROYED BY FARMING AND/OR DITCHING ACTIVITIES. CONSIDERED CORNER TO BE LOST. RE-ESTABLISHED POSITION FOR CORNER BY SINGLE PROPORTIONATE MEASURE BETWEEN F-13, A "T" IRON, FOUND AND ACCEPTED (SEE MY CRC FOR F-13, SAME DATE AS THIS) AND C-13. SET 3/4" PIPE AND CAP LS# 25837 TO MONUMENT CORNER. MEASURED DISTANCE TO C-13 IS 5286.16' AND TO F-13 TO 2643.08'

B. Description of corner evidence found and/or method applied in restoring or reestablishing corner:

FIELD INVESTIGATION AT APPARENT LOCATION OF CORNER REVEALED A 3/4" PIPE & CAP #25837 3' SOUTH OF SOUTH TOP BANK OF LARGE DRAIN BURIED 2' DEEP IN DRAIN SPOIL. MEASURED 293.29' WEST TO D-1 T1SR2E. ACCEPTED FOUND PIPE AS PERPETUATION OF CORNER AND SET 1 1/2" X 36" PIPE & 2 1/4" ALUMINUM CAP OVER IT. MEASURED N00°50'26"W, 2664.04' TO E-12, N89°49'20"E, 2643.07' TO F-13 AND S89°49'20"W, 2643.07' TO D-13

C. Description of monument for corner and accessories established to perpetuate locating the position of the corner:

E-13 T1N R2E

1 1/2" X 36" PIPE WITH 2 1/4" ALUMINUM CAP STAMPED PA 345 PS 25837 INGHAM COUNTY

CUT "X" NW END 18" CMP

N87°E

216.81'

CUT "X" SE END 18" CMP

EAST

235.73'

NAIL & TAG 25837 W SIDE 15" HICKORY

S51°W

441.36'

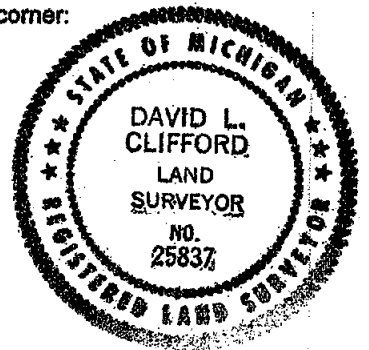
NAIL & TAG 25837 W SIDE 15" HICKORY

S57°W

486.31'

1" X 36" ALUMINUM PIPE MONUMENT (D-1, T1SR2E) WEST

293.29'



Signed by David L. Clifford

Date SEPTEMBER 16, 2003

Surveyor's Michigan License No. 25837

FORM APPROVED BY MICHIGAN STATE BOARD OF PROFESSIONAL SURVEYORS, JAN. 28, 1971
REVISED MAY 14, 1976
REVISED JAN. 1983
REVISED OCT. 1995

P.A. 345 INGHAM COUNTY
PEER APPROVED 11/25/03 *mc*