

LAND CORNER RECORDATION CERTIFICATE

FILING REQUIREMENT OF ACT 74, MICH. P.A. 1970

NW. CORNER SECTION 11, T2N, R1W, VEXAY TWP.
INGHAM COUNTY

LIBER 10 483

FOR CORNERS OF--	LOCATED IN--	CORNER CODE NUMBER
1. PUBLIC LAND SURVEY	T. 2 N. R. 1 W.	1-3
2. PROPERTY CONTROLLING IN SECTION	T. N. S. R. E. W.	
3. MISCELLANEOUS PROPERTY IN SECTION	T. N. S. R. E. W.	
4. LOT NO.	RECORDED PLAT	
5. PRIVATE CLAIMS		

FILED

MAY 10 10 19 AM '72

REGISTER OF DEEDS
MICHAEL B. HANFORD
INGHAM COUNTY, MICH.

REGISTER OF DEEDS STAMP AND
FILING NUMBER

I, James E. Stephens, do hereby certify that under requirements of P.A. 74, Michigan P.A. of 1970, the corner points mentioned in lines 1 and 2 above (identified with circles on index code diagram--over) were, in a field survey on April 6, 1972, established, re-established, monumented, re-monumented, recovered or restored as expressed below and in conformance with regulations and rules therefore as required in the current manual of survey instructions of the United States Department of the Interior, Bureau of Land Management or by a decree of a court of law. Furthermore, that the corner points mentioned in lines 3, 4 and 5 above were, in a field survey on 19____, found, recovered, restored, established or re-established as expressed below and in conformance with the rules of the Michigan State Board of Registration for Land Surveyors or, by a Decree of a Court of law:

A. Description of original monument and accessories and/or subsequent restoration:
Original monument and accessories obliterated.

B. Description of corner evidence found and/or method applied in restoring or re-establishing corner:
A railroad spike was found in the centerline of the section line roads (Columbia Road and Ives Road).

C. Description of monument for corner and accessories established to perpetuate locating the position of the corner:
The railroad spike found at the NW. corner was left in position with the following witnesses;

Survey tag in the E. side of a utility pole N78°26'W 121.29 feet.
Survey tag in the N. side of a 48 inch Maple S34°22'W 35.80 feet.
Survey tag in the W. side of a utility pole N67°31'E 56.90 feet.
The bearing of the section line east of the corner is EAST.
The bearing of the section line south of the corner is S0°08'E.

SIGNED BY James E. Stephens
SURVEYOR'S MICHIGAN REGISTRATION NO. 16053

DATE May 5, 1972

FOR STATE AND UNITED STATES AGENCIES:

SIGNED BY _____ CHIEF OF SURVEY PARTY
APPROVED AND SIGNED BY _____ MICHIGAN REGISTERED LAND SURVEYOR

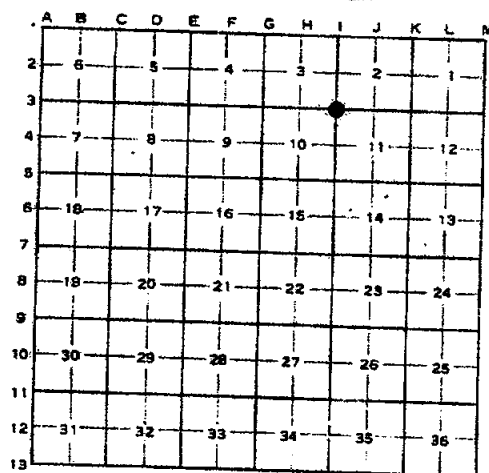
DATE _____



SURVEYOR'S MICHIGAN REGISTRATION NO.

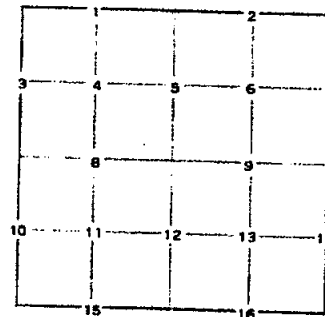
CORNER NUMBERING CODE DIAGRAMS FOR IDENTIFYING LAND CORNER RECORDATIONS AND INDEXING

FOR PUBLIC LAND SURVEY CORNERS IN THE
T. 2N, R. 1W (MENTIONED OVER)



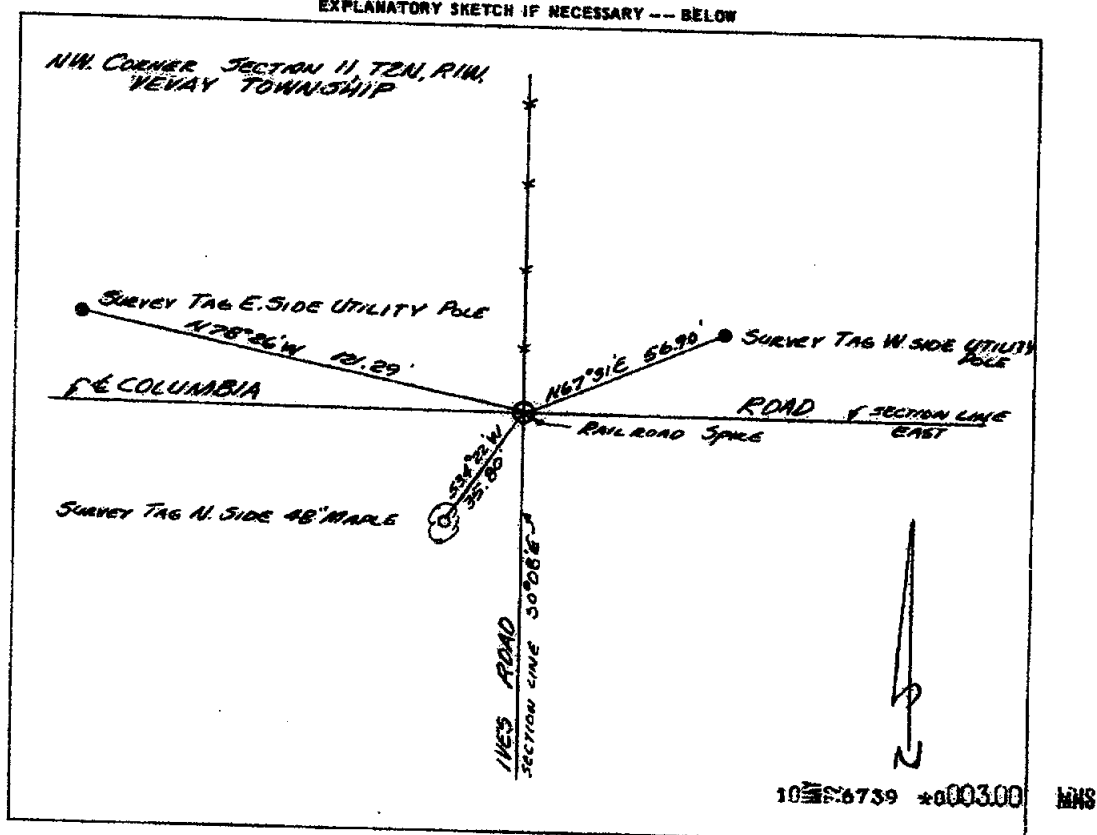
Apply letter prefix for corner points encircled above for identifying corner recordation numbers over.

FOR PROPERTY CONTROLLING AND MISC.
PROPERTY CORNERS WITHIN THE SECTION
(MENTIONED OVER 'ND EXCLUDE LOT CORNER)



1. Above coded numbers are positioned on 1/16 fractional lines of the section.
2. Township corner code numbers shall be applied to corners of above typical section not numbered.
3. Miscellaneous property corners within a section, located at points other than numbered above, shall be referenced to at least two of above corner code numbers.
4. Private claim corners to be tied to rectangular land corners if possible - sketch required below.

EXPLANATORY SKETCH IF NECESSARY -- BELOW



10 6739 *0003.00 MNS

Ingham County

LAND CORNER RECORDATION CERTIFICATE

FILING REQUIREMENT OF ACT 74, MICH. P.A. 1970

LIBER

1 PG 625

FOR CORNERS OF-- Sec. LOCATED IN-- CORNER CODE NUMBER

1. PUBLIC LAND SURVEY 2 T. 2 N. R. 1 W. I-1, K-1

2. PROPERTY CONTROLLING IN SECTION T. N. S. R. E. W.

3. MISCELLANEOUS PROPERTY IN SECTION T. N. S. R. E. W.

4. LOT NO. RECORDED PLAT

5. PRIVATE CLAIMS

FILED

JUN 28 9 29 AM '72

REGISTER OF DEEDS

Ernie M. Lester
INGHAM COUNTY, MICH.

REGISTER OF DEEDS STAMP AND
FILING NUMBER

I, Ronnie M. Lester do hereby certify that under requirements of P.A. 74, Michigan P.A. of 1970, the corner points mentioned in lines 1 and 2 above (identified with circles on index code diagram-over) were, in a field survey on May 27, 1972, established, re-established, monumented, re-monumented, recovered or restored as expressed below and in conformance with regulations and rules therefore as required in the current manual of survey instructions of the United States Department of the Interior, Bureau of Land Management or by a decree of a court of law. Furthermore, that the corner points mentioned in lines 3, 4 and 5 above were, in a field survey on 19 found, recovered, restored, established or re-established as expressed below and in conformance with the rules of the Michigan State Board of Registration for Land Surveyors or, by a Decree of a Court of law:

A. Description of original monument and accessories and/or subsequent restoration:

I-1, Original monuments and accessories obliterated.

K-1, Original monuments and accessories obliterated.

B. Description of corner evidence found and/or method applied in restoring or re-establishing corner:

I-1, NW Cor. Sec. 2- Set Corner on town line on old fence row South, distance between fence row South and Centerline Wolverine Road North matched original government falling as recorded.

K-1, NE Cor. Sec. 2- Set Corner on town line at original government falling from SE Corner of Section 35, Fell in Every Road 3.8' West of physical Centerline.

C. Description of monument for corner and accessories established to perpetuate locating the position of the corner:

I-1, 1/2" bar in Howell Road
Nail & Tag in East side power pole, NW, 50.76'
Nail & Tag in East side 10" boxelder, SSE, 54.52'
Cut in top of 12" CMP at West end, ENE, 64.35'

K-1, 1/2" bar in Howell Road and Every Road
South Corner of 3" metal fence post, North, 33.55'
Cut in Corner of 12" CMP, SE, 44.34'
NE Corner of fireplace (chimney) on one-story ranch, SW, 140.17'

SIGNED BY Ronnie M. Lester DATE May 24, 1972

SURVEYOR'S MICHIGAN REGISTRATION NO. 18998

(SEAL)

FOR STATE AND UNITED STATES AGENCIES:

SIGNED BY _____ DATE _____
CHIEF OF SURVEY PARTY

APPROVED AND SIGNED BY _____ DATE _____
MICHIGAN REGISTERED LAND SURVEYOR

(SEAL)

SURVEYOR'S MICHIGAN REGISTRATION NO. _____

313

Form No. M.L.M738
DOUGLASS BROS. & CO., KALAMAZOO, MICH.

FORM APPROVED BY MICHIGAN STATE BOARD OF REGISTRATION, JAN. 28, 1971
DISTRIBUTED BY MICHIGAN SOCIETY OF REGISTERED LAND SURVEYORS

LAND CORNER RECORDATION CERTIFICATE

FILING REQUIREMENT OF ACT 74, MICH. P.A. 1970

LIBER

3 PC 167

FOR CORNERS OF -- LOCATED IN -- CORNER CODE NUMBER

1. PUBLIC LAND SURVEY Sec. 10 1 2. N. R. 1 H-3, H-5

2. PROPERTY CONTROLLING IN SECTION T S. R. E. W.

3. MISCELLANEOUS PROPERTY IN SECTION T S. R. E. W.

4. LOT NO. RECORDED PLAT

5. PRIVATE CLAIMS

FILED

JUL 12 2 06 PM '74
REGISTER OF DEEDS
Rand M. Lester
INGHAM COUNTY, MICH.

REGISTER OF DEEDS STAMP AND FILING NUMBER

I, **Ronnie M. Lester** do hereby certify that under requirements of P.A. 74, Michigan P.A. of 1970 the corner points mentioned in lines 1 and 2 above (identified with circles on index code diagram - over) were, in a field survey on **May 9, 1974**, established, re-established, monumented, re-monumented, recovered or restored as expressed below and in conformance with regulations and rules therefore as required in the current manual of survey instructions of the United States Department of the Interior, Bureau of Land Management or by a decree of a court of law. Furthermore, that the corner points mentioned in lines 3, 4 and 5 above were, in a field survey on **19**, found, recovered, restored, established or re-established as expressed below and in conformance with the rules of the Michigan State Board of Registration for Land Surveyors or, by a Decree of a Court of law:

A. Description of original monument and accessories and or subsequent restoration:

H-3, Witness trees remaining as recorded at the Ingham County Road Commission.
H-5, Original monument and accessories lost.

B. Description of corner evidence found and or method applied in restoring or re-establishing corner:

H-3, Found P.K. nail from old witnesses obtained from the Ingham County Road Commission and replaced with 1/2" bar on apparent centerline of Columbia Rd. and fence line South.
H-5, Set 1/2" bar and cap on line and 1/2 way between the SW corner and the SE corner of Section 10, on fence line and tree line East & West and 173'± East of physical centerline of Dexter Trail. Records of seven area surveyors revealed no additional evidence of this corner.

C. Description of monument for corner and accessories established to perpetuate locating the position of the corner:

H-3, N 1/4 Corner of Section 10, T2N, R1W
SE Corner foundation existing house #1748, NNW, 105.19'
Nail & tag East side 30" maple, North, 40.30'
Nail & tag West side 26" maple, NE, 45.39'
H-5, S 1/4 Corner of Section 10, T2N, R1W
SE corner of existing house, NW, 85.65'
Nail & tag South side 20" willow, West, 24.98'
Nail & tag East side 12" maple, North, 44.70'

SIGNED BY Ronnie M. Lester DATE May 16, 1974

SURVEYOR'S MICHIGAN REGISTRATION NO. 18998

FOR STATE AND UNITED STATES AGENCIES:

SIGNED BY _____ DATE _____

APPROVED AND SIGNED BY _____ DATE _____

SURVEYOR'S MICHIGAN REGISTRATION NO. _____

727

Form 7-0, 8/1/73
DOUGLASS BROS. & CO., Kalamazoo, MICH.

FORM APPROVED BY MICHIGAN STATE BOARD OF REGISTRATION, JUNE 28, 1971
DISTRIBUTED BY MICHIGAN SOCIETY OF REGISTERED LAND SURVEYORS

Vevay Twp., Ingham Co. **LAND CORNER RECORDATION CERTIFICATE**

FILING REQUIREMENT OF ACT 74, MICH. P.A. 1970

LIBER 3 PG 329
 FILED

FOR CORNERS OF--	Sec.	LOCATED IN--	CORNER CODE NUMBER
1. PUBLIC LAND SURVEY	3	1. 2 N. R. 1 W.	G-3
2. PROPERTY CONTROLLING IN SECTION	1	N. R. W.	
3. MISCELLANEOUS PROPERTY IN SECTION	1	N. R. W.	
4. LOT NO.		RECORDED PLAT	
5. PRIVATE CLAIMS			

FEB 18 1 26 PM '75
 REGISTER OF DEEDS
Paul M. Lewis
 INGHAM COUNTY, MICH

REGISTER OF DEEDS STAMP AND
 FILING NUMBER

I, **Maynard R. Dyer** do hereby certify that under requirements of P.A. 74, Michigan P.A. of 1970 the corner points mentioned in lines 1 and 2 above (identified with circles on index code diagram - over) were, in a field survey on **October 3, 1974**, established, re-established, monumented, re-monumented, recovered or restored as expressed below and in conformance with regulations and rules therefore as required in the current manual of survey instructions of the United States Department of the Interior, Bureau of Land Management or by a decree of a court of law. Furthermore, that the corner points mentioned in lines 3, 4 and 5 above were, in a field survey on **19**, found, recovered, restored, established or re-established as expressed below and in conformance with the rules of the Michigan State Board of Registration for Land Surveyors or, by a Decree of a Court of law:

A. Description of original monument and accessories and or subsequent restoration:

G-3, SW Corner Section 3, T2N, R1W,
 Original monument and accessories obliterated.

B. Description of corner evidence found and or method applied in restoring or re-establishing corner:

G-3, Found 1/2" bar in centerline Columbia Road. Distance to S 1/4 Corner of Sec. 3 in close accord with that recorded by T.J. Brown, County Surveyor, in Book 3, Page 49 of Ing. Co. Survey records dated April 3 and May 4, 1869. Survey by Clyde Stephens dated May 8, 1965 indicated SW Corner at this location. Records of seven area surveyors revealed no additional or conflicting evidence.

C. Description of monument for corner and accessories established to perpetuate locating the position of the corner:

G-3, SW Corner Section 3, T2N, R1W, Fd. 1/2" bar
 Nail & tag NE side 32" ash, NW, 58.15'
 Nail & tag SE side 30" ash, NE, 53.16'
 Nail & tag South side 24" walnut, ENE, 73.07'

SIGNED BY *Maynard R. Dyer* DATE 10/18/74

SURVEYOR'S MICHIGAN REGISTRATION NO. 21565

FOR STATE AND UNITED STATES AGENCIES:

SIGNED BY _____ DATE _____
CHIEF OF SURVEY PARTY

APPROVED AND SIGNED BY _____ DATE _____
MICHIGAN REGISTERED LAND SURVEYOR

SURVEYOR'S MICHIGAN REGISTRATION NO. _____

LAND CORNER RECORDATION CERTIFICATE

FILING REQUIREMENT OF ACT 74, MICH. P.A. 1970
E 1/4 corner, Section 4, T2N, R1W, Vevay Township,
Ingham County

FOR CORNERS OF:-	LOCATED IN:-	CORNER CODE NUMBER	LIBER	3 PG 381
1. PUBLIC LAND SURVEY	1 2N 8. R. 1W 8.	6-2	FILED	
2. PROPERTY CONTROLLING IN SECTION	1 N. R. E.			
3. MISCELLANEOUS PROPERTY IN SECTION	1 N. R. E.			
4. LOT NO. - - - - -	RECORDED PLAT			
5. PRIVATE CLAIMS - - - - -				

MAY 23 1 11 PM '75
REGISTER OF DEEDS
Paul M. Lewis
INGHAM COUNTY, MICH.

REGISTER OF DEEDS STAMP AND
FILING NUMBER

I, James E. Stephens, do hereby certify that under requirements of P.A. 74, Michigan P.A. of 1970 the corner points mentioned in lines 1 and 2 above (identified with circles on index code diagram) were, in a field survey on April 14, 1975, established, re-established, monumented, re-monumented, recovered or restored as expressed below and in conformance with regulations and rules therefore as required in the current manual of survey instructions of the United States Department of the Interior, Bureau of Land Management or by a decree of a court of law. Furthermore, that the corner points mentioned in lines 3, 4 and 5 above were, in a field survey on 19, found, recovered, restored, established or re-established as expressed below and in conformance with the rules of the Michigan State Board of Registration for Land Surveyors or, by a Decree of a Court of law:

A. Description of original monument and accessories and or subsequent restoration:

The original monument and accessories were not found.

B. Description of corner evidence found and or method applied in restoring or re-establishing corner:

A 3/4 inch iron pipe was found at the intersection of a 4 way fence.

Researched records of 8 area Registered Land Surveyors.

C. Description of monument for corner and accessories established to perpetuate locating the position of the corner:

The 3/4 inch iron pipe found at the E 1/4 corner was left in position with the following witnesses;

Survey tag on the North side of a 14" Oak tree, N89°23'E 33.42 feet.
Survey tag on the South side of a 30" dead Elm tree, N8°58'W 42.20 feet.
Survey tag on the South side of a 12" Wild Cherry tree, N0°13'W 66.05 feet.

SIGNED BY James E. Stephens DATE April 18, 1975

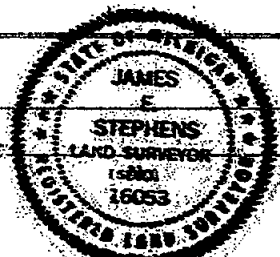
SURVEYOR'S MICHIGAN REGISTRATION NO. 16053

FOR STATE AND UNITED STATES AGENCIES:

SIGNED BY _____ DATE _____

APPROVED AND SIGNED BY _____ DATE _____

SURVEYOR'S MICHIGAN REGISTRATION NO. _____



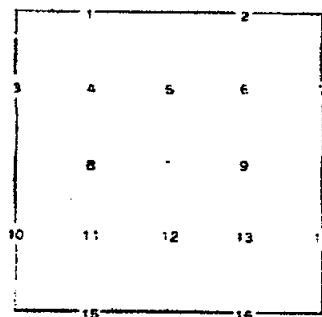
CORNER NUMBERING CODE DIAGRAMS FOR IDENTIFYING LAND CORNER RECORDATIONS AND INDEXING

FOR PUBLIC LAND SURVEY CORNERS IN THE
T. 2N, R. 1W (MENTIONED OVER)

	A	B	C	D	E	F	G	H	I	J	K	L	M
2	6		5		4		3		2		1		
3													
4	7		8		9		10		11		12		
5													
6	19		17		16		15		14		13		
7													
8	19		20		21		22		23		24		
9													
10	30		29		28		27		26		25		
11													
12	31		32		33		34		35		36		
13													

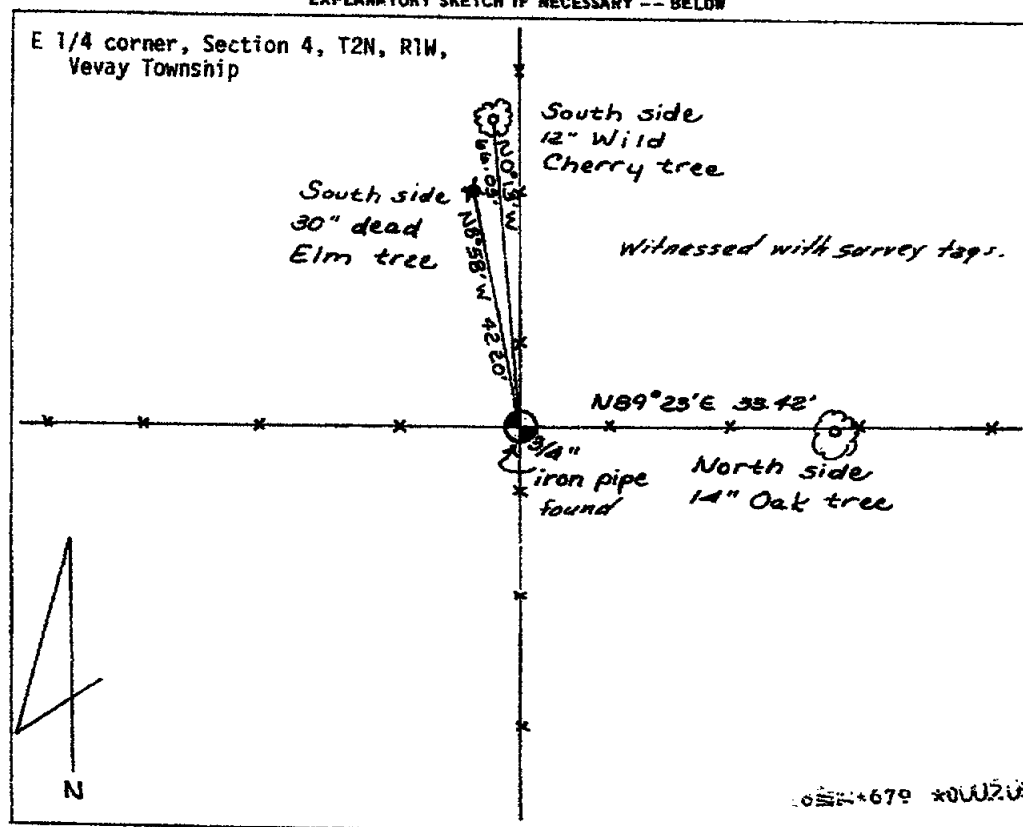
Apply letter prefix for corner points encircled above for identifying corner recordation numbers over.

FOR PROPERTY CONTROLLING AND MISC.
PROPERTY CORNERS WITHIN THE SECTION
(MENTIONED OVER AND EXCLUDE LOT CORNER)



1. Above coded numbers are positioned on 1/16 fractional lines of the section.
2. Township corner code numbers shall be applied to corners of above typical section not numbered.
3. Miscellaneous property corners within a section, located at points other than numbered above, shall be referenced to at least two of above corner code numbers.
4. Private claim corners to be tied to rectangular land corners if possible - sketch required below.

EXPLANATORY SKETCH IF NECESSARY -- BELOW



679 *000200 L16

LAND CORNER RECORDATION CERTIFICATE
FILING REQUIREMENT OF ACT 74, MICH. P.A. 1970

LIBER 4 382

FOR CORNERS OF— LOCATED IN— CORNER CODE NUMBER

1. PUBLIC LAND SURVEY— T. 2 N. R. 1 E. W. G-1

2. PROPERTY CONTROLLING IN SECTION— T. N. S. R. E. W.

3. MISCELLANEOUS PROPERTY IN SECTION— T. N. S. R. E. W.

4. LOT NO. —, RECORDED PLAT —

5. PRIVATE CLAIMS —

FILED

SEP 19 8 56 AM '78

REGISTER OF DEEDS
Paula Johnson
INGHAM COUNTY, MICH.

REGISTER OF DEEDS, STAMP AND
FILING NUMBER

I, Ronnie M. Lester, do hereby certify that under requirements of P.A. 74, Michigan P.A. of 1970, the corner points mentioned in lines 1 and 2 above were, in a field survey on July 20, 1978, established, re-established, monumented, re-monumented, recovered or restored as expressed below and in conformance with regulations and rules therefore as required in the current manual of survey instructions of the United States Department of the Interior, Bureau of Land Management or by a decree of a court of law. Furthermore, that the corner points mentioned in lines 3, 4 and 5 above were, in a field survey on _____, 19____, found, recovered, restored, established or re-established as expressed below and in conformance with the rules of the Michigan State Board of Registration for Land Surveyors or, by a Decree of a Court of law:

A. Description of original monument and accessories and/or subsequent restoration:
G-1

Post set by Harvey Parke in original government survey, Feb. and March, 1826. Corner referred to in subsequent surveys by A. Jackson, County Surveyor, dated Dec. 18, 1841 (v.1, p.47) and by Wm. Rayner, County Surveyor, surveys dated Jan. 2, 1866 (v.3, p.17) and Sept. 22, 1894. Found old post, and stone set by W.A. Rowe, County Surveyor, in survey dated April 18, 1896 (v.3, p.239).

B. Description of corner evidence found and/or method applied in restoring or re-establishing corner:
G-1

Excavated hole 6' x 6' to an average depth of 3', mostly south of centerline of Howell Road. Found large pointed stone (1.2' x 0.4' x 0.4') surrounded by china, tile and rocks 3' below surface in clay, on centerline of Howell Road, + 105' west of fence line north. Measured + 90' east to $\frac{1}{2}$ " iron bar, possibly G-13, Alaledon Twp., T3N-R1W, falling distance between G-1 and G-13 is in close accord with G.L.O. map. Accepted stone as corner described by Rowe in survey noted above.

Excavation conducted by Ingham County Survey and Remonumentation Project crew.

C. Description of monument for corner and accessories established to perpetuate locating the position of the corner:
G-1

Northwest Corner, Section 3, T2N-R1W

Set 4" x 36" concrete monument with $\frac{1}{2}$ " x 38" rerod with cap #18998, and concrete collar with cover at location of stone described above:

Nail & tag, #18998, north side 24" Walnut, SSE, 35.64'

Nail & tag, #18998, east side 24" Walnut, ESE, 101.62'

Nail & tag, #18998, east side 24" Walnut, ESE, 117.94'

Nail & tag, #18998, northwest side 36" Willow, ENE, 105.78'

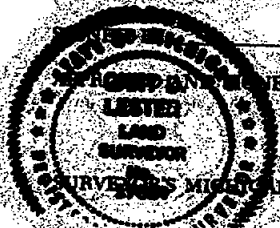
$\frac{1}{2}$ " iron, G-13 Alaledon Twp. T3N-R1W, Due East, 91.40'

SIGNED BY Ronnie M. Lester

DATE 9/12/78

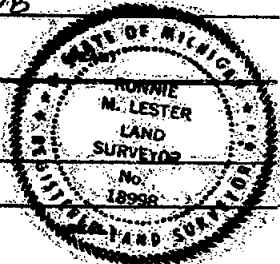
SURVEYOR'S MICHIGAN REGISTRATION NO. 18998

XXXXXXXXXXXXXXXXXXXXXXXXXXXX



CHIEF SURVEYOR
DIRECTOR, Ingham County Survey and Remonumentation Project
DATE 9/12/78

SURVEYOR'S MICHIGAN REGISTRATION NO. 17624
1376



FORM APPROVED BY MICHIGAN STATE BOARD OF REGISTRATION, JAN. 22, 1971
REVISED MAY 14, 1973

MAY PLACE SKETCH ON BACK OR ATTACHED SHEET

INGHAM COUNTY - VEYAY TWP.
LAND CORNER RECORDATION CERTIFICATE
FILING REQUIREMENT OF ACT 74, MICH. P.A.1970

FOR CORNERS OF--	LOCATED IN--	CORNER CODE NUMBER
1. PUBLIC LAND SURVEY_____	T. <u>2</u> N. <u>1</u> S. <u>1</u> R. <u>1</u> E. <u>1</u> W. <u>1</u>	<u>G-1</u>
2. PROPERTY CONTROLLING IN SECTION_____	T. _____ N. _____ S. _____ R. _____ E. _____ W. _____	_____
3. MISCELLANEOUS PROPERTY IN SECTION_____	T. _____ N. _____ S. _____ R. _____ E. _____ W. _____	_____
4. LOT NO. _____, RECORDED PLAT _____		
5. PRIVATE CLAIMS _____		

LIBER **5 M 218**

FILED

APR 6 9 11 AM '79

REGISTER OF DEEDS

Paula Johnson
INGHAM COUNTY, MICH.

REGISTER OF DEEDS STAMP AND
FILING NUMBER

1. Ronnie M. Lester, do hereby certify that under requirements of P.A. 74, Michigan P.A. of 1970, the corner points mentioned in lines 1 and 2 above were, in a field survey on July 20, 1978, established, re-established, monumented, re-monumented, recovered or restored as expressed below and in conformance with regulations and rules therefore as required in the current manual of survey instructions of the United States Department of the Interior, Bureau of Land Management or by a decree of a court of law. Furthermore, that the corner points mentioned in lines 3, 4 and 5 above were, in a field survey on _____, 19____, found, recovered, restored, established or re-established as expressed below and in conformance with the rules of the Michigan State Board of Registration for Land Surveyors or, by a Decree of a Court of law:

A. Description of original monument and accessories and/or subsequent restoration:

G-1

Re-recorded because accessories were removed as recorded in L.4, p.382.

B. Description of corner evidence found and/or method applied in restoring or re-establishing corner:

G-1

Corner described in L.4, p.382 except excavation at G-13 Alameda Township proved iron at G-13 was not in correct location.

C. Description of monument for corner and accessories established to perpetuate locating the position of the corner:

G-1

Northwest Corner, Section 3, T2N-R1W
4" x 36" concrete monument with 1/2" x 38" rerod with cap #18998, and concrete collar with cover at location of corner as previously recorded:
Nail & tag, #18998, northwest side, 30" Willow, ENE, 105.82'
Nail & tag, #18998, northwest side 10" Butternut, NNE, 118.00'
Nail & tag, #18998 southeast side 10" Apple, NE, 163.18'
Nail & tag, #18998, southwest side Power Pole, NW, 111.47'
Concrete monument at location of G-13, Alameda Twp., T3N-R1W, Due East, 90.44'

SIGNED BY Ronnie M. Lester DATE April 4, 1979

SURVEYOR'S MICHIGAN REGISTRATION NO. 18998

FOR STATE AND UNITED STATES AGENCIES:

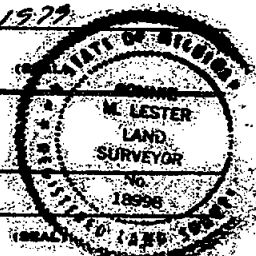
SIGNED BY _____ DATE _____

APPROVED AND SIGNED BY _____ DATE _____

SURVEYOR'S MICHIGAN REGISTRATION NO. _____

1601

MAY PLACE SKETCH ON BACK OR ATTACHED SHEET



FORM APPROVED BY MICHIGAN STATE BOARD OF REGISTRATION, JAN. 25, 1971
REVISED MAY 14, 1978

PA 1970

LIBER 5 PG 260
FILED

REGISTER OF DEEDS

**REGISTER OF DEEDS STAMP AND
FILING NUMBER**

A. Description of original monument and accessories and/or subsequent restoration:

No record of corner being established in original government survey.
Corner referred to in a survey by W.H. Rayner, County Surveyor, Feb. 2, 1866
(v.3, p.17).

B. Description of corner evidence found and/or method applied in restoring or re-establishing corner:

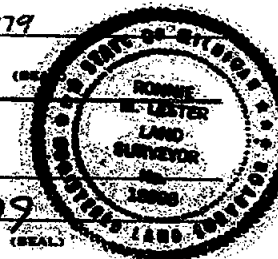
Excavated a hole 15.7' x 12.2' to an average depth of 4.7' on the centerline of Howell Road and + 75' west of fence line to the north. Found small pile of stones + 4.0' below road surface, + 5.5' north of the centerline of Howell Road and + 70' west of tree line to the north. There was no other physical evidence to indicate possible location of corner. The corner was considered to be lost and was re-established by placing midway and on line between G-1 and I-1. Location of corner falls +3.5' north of physical centerline of Howell Road. Measured west + 2669.5' to G-1 and east + 2669.5' to I-1 and + 74.8' east to H-13 Alameda Twp., T3N-R1W.

N $\frac{1}{2}$ Corner, Section 3, T2N-R1W
Set 4" x 36" concrete monument with $\frac{1}{2}$ " x 38" rebar with cap #18998 and concrete collar and cover in location of corner described above:
Nail & tag, #18998, south side fence post, NE, 79.16'
Nail & tag, #18998, east side 6" Elm, NNW, 58.56'
Nail & tag, #18998, west side 10" Poplar, North, 86.68'
Nail & tag, #18998, east side power pole, NNE, 28.31'
 $\frac{1}{2}$ " iron bar (H-13 Alameda Twp., T2N-R1W), East, + 74.8'

XXXXXXXXXXXXXXXXXXXXXXXXXXXXXXXXXXXX

DATE 7-12-75

FORM APPROVED BY MICHIGAN STATE BOARD OF REGISTRATION, JAN. 28, 1973
REVISED MAY 14, 1975



LAND CORNER RECORDATION CERTIFICATE
FILING REQUIREMENT OF ACT 74, MICH. P.A.1970

FOR CORNERS OF--	LOCATED IN--	CORNER CODE NUMBER
1. PUBLIC LAND SURVEY	T. 2N N. S., R. 1W E. W.	H-2
2. PROPERTY CONTROLLING IN SECTION	.T. N. S., R. E. W.	
3. MISCELLANEOUS PROPERTY IN SECTION	.T. N. S., R. E. W.	
4. LOT NO. _____, RECORDED PLAT _____		
5. PRIVATE CLAIMS _____		

LIBER 6 PAGE 245

FILED

OCT 19 9 12 AM '83

REGISTER OF DEEDS
Paul Johnson
INGHAM COUNTY, MICH.

REGISTER OF DEEDS STAMP AND
FILING NUMBER

I, Richard W. Steadman, do hereby certify that under requirements of P.A. 74, Michigan P.A. of 1970, the corner points mentioned in lines 1 and 2 above were, in a field survey on September 30, 1983, established, re-established, monumented, re-monumented, recovered or restored as expressed below and in conformance with regulations and rules therefore as required in the current manual of survey instructions of the United States Department of the Interior, Bureau of Land Management or by a decree of a court of law. Furthermore, that the corner points mentioned in lines 3, 4 and 5 above were, in a field survey on _____, 19____, found, recovered, restored, established or re-established as expressed below and in conformance with the rules of the Michigan State Board of Registration for Land Surveyors or, by a Decree of a Court of law:

A. Description of original monument and accessories and/or subsequent restoration:

This corner was customarily established by the County Surveyor, but it is unclear as to whether or not its location noted in a December 1864 survey by W. H. Rayner, County Surveyor, is the original establishment (see Vol. 3-Page 17 of County Surveyors Records).

Rayner's corner post was found by County Surveyor W. A. Rowe in an April 1896 survey, who replaced it with a gas pipe (see Vol. 3-Page 239 of County Surveyors Records).

B. Description of corner evidence found and/or method applied in restoring or re-establishing corner:

The only evidence found for the location of the corner was an old wood anchor post.

C. Description of monument for corner and accessories established to perpetuate locating the position of the corner:

Set 1/2" iron pipe on the North side of the anchor post to help identify the corner.

Witnesses:	6" Crab apple	S75°E	3.96 ft.
	5" Maple	N88°W	19.18 ft.
	4" Elm	S02°W	18.40 ft.

SIGNED BY Richard W. Steadman DATE October 17, 1983

SURVEYOR'S MICHIGAN REGISTRATION NO. 11370

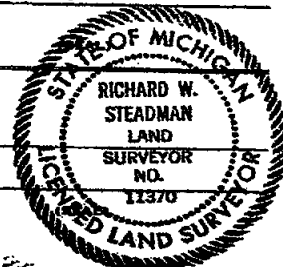
FOR STATE AND UNITED STATES AGENCIES:

SIGNED BY _____ DATE _____

APPROVED AND SIGNED BY _____ DATE _____

1993

SURVEYOR'S MICHIGAN REGISTRATION NO. _____



FORM APPROVED BY MICHIGAN STATE BOARD OF REGISTRATION, JAN. 28, 1971
REVISED MAY 14, 1976

MAY PLACE SKETCH ON BACK OR ATTACHED SHEET

LAND CORNER RECORDATION CERTIFICATE
Filing Requirement of Act 74, Mich. P.A. 1970

LIBER 7 PAGE 112

For corners in

Ingham
(County)

Located in:

Corner Code #

- | | | | | | |
|-------------------------|---|----|---|----|-----|
| 1. Public Land Survey | T | 2N | R | 1W | G-3 |
| | T | | R | | |
| | T | | R | | |
| | T | | R | | |
| 2. Property Controlling | S | T | R | | |
| in Section | S | T | R | | |
| 3. Miscellaneous | S | T | R | | |
| Property in Sec. | S | T | R | | |

FILED

MAR 29 8 45 AM '89

REGISTER OF DEEDS

INGHAM COUNTY, MICH.

Register of Deeds Stamp & File Number

4. Lot No. Recorded Plat
5. Private Claims

I, Maurice H. Mahieu, in a field survey on February 2, 1989, do hereby certify that under requirements of P.A. 74, Michigan P.A. of 1970, the corner points mentioned in lines 1 and 2 above were in conformance with regulations and rules therefore as required in the current manual of survey instructions of the United States Department of the Interior, Bureau of Land Management or by a decree of a Court of Law and/or that the corner points mentioned in lines 3, 4 and 5 above were in conformance with the rules of the Michigan Board of Land Surveyors or by a Decree of a Court of Law, established, re-established, monumented, re-monumented, recovered, found as expressed below:

NOTE: Not more than 4 corners, all in the same town and range, may be recorded on this certificate.

A. Description of original monument and accessories and/or subsequent restoration:

Original monument and accessories obliterated

B. Description of corner evidence found and/or method applied in restoring or reestablishing corner:

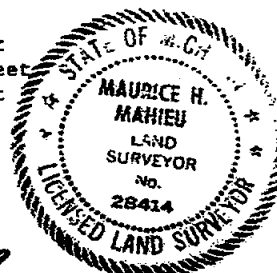
Found 1/2" iron bar in same location as corner recorded in Liber 3 of Land Corners, Page 329.

This corner is being rerecorded to update the witnesses.

C. Description of monument for corner and accessories established to perpetuate locating the position of the corner:

The 1/2" Iron bar was left in position and witnessed by:

- Nail and Tag in East Side of a Utility Pole North 23.81 feet
- Nail and Tag in Northwest Side of a 30" Ash N 40° E 52.79 feet
- Nail and Tag in East Side of a Utility Pole South 38.35 feet
- Nail and Tag in East Side of a 15" Maple S 5° W 25.93 feet



Signed by

Maurice H. Mahieu

Date

2-7-89

Surveyor's Michigan License No.

28414

LAND CORNER RECORDATION CERTIFICATE
Filing Requirement of Act 74, Mich. P.A. 1970

FILED

For corners in

<u>Ingham</u> (County)	Located in:	Corner Code ##
1. Public Land Survey	T 2N R 1W	G-3
	T R	
	T R	
	T R	
2. Property Controlling in Section	S T R	
	S T R	
3. Miscellaneous	S T R	
Property in Sec.	S T R	
4. Lot No.	Recorded Plat	
5. Private Claims		

AUG 5 9 51 AM '91

REGISTER OF DEEDS
 REGISTERED
 FILED

Register of Deeds Stamp & File Number

I, Maurice H. Mahieu in a field survey on May 23 19 91 do hereby certify that under requirements of P.A. 74, Michigan P.A. of 1970, the corner points mentioned in lines 1 and 2 above were in conformance with regulations and rules therefore as required in the current manual of survey instructions of the United States Department of the Interior, Bureau of Land Management or by a decree of a Court of Law and/or that the corner points mentioned in lines 3, 4 and 5 above were in conformance with the rules of the Michigan Board of Land Surveyors or by a Decree of a Court of Law, established, re-established, monumented, re-monumented, recovered, found as expressed below

NOTE: Not more than 4 corners, all in the same town and range, may be recorded on this certificate.

A. Description of original monument and accessories and/or subsequent restoration:
 Original Monument and accessories obliterated

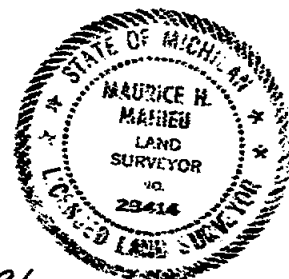
B. Description of corner evidence found and/or method applied in restoring or reestablishing corner:

Found 1/2" Iron Bar in same location as corner recorded in Liber 7 of Land Corners, Page 112.

This corner is being re-recorded to update the witnesses

C. Description of monument for corner and accessories established to perpetuate locating the position of the corner:

The 1/2" iron bar was left in position and witnessed by:
 Nail and Tag in East Side of a utility pole, North 23.81'
 Nail and Tag #28414 in South side 42" Ash, N 60° W, 57.67'
 Nail and Tag Northwest side 30" Ash, N 40° E, 52.79'
 Nail and Tag East Side Utility Pole, South, 38.35'



Signed by

Surveyor's Michigan License No.

Maurice H. Mahieu
 28414

Date

6-24-91

LAND CORNER RECORDATION CERTIFICATE
Filing Requirement of Act 74, Mich. P.A. 1970

For corners in

Ingham
(County)

Located in:

Corner Code H-3

FILED

AUG 5 9 51 AM '91

REGISTER OF DEEDS

Register of Deeds Stamp & File Number

- | | | | |
|------------------------------------|---|----------|---|
| 1. Public Land Survey | T | 2N. R 1W | |
| | T | R | |
| | T | R | |
| | T | R | |
| 2. Property Controlling in Section | S | T | R |
| | S | T | R |
| 3. Miscellaneous Property in Sec | S | T | R |
| | S | T | R |

4. Lot No. Recorded Plat
 5. Private Claims

I, Maurice H. Mahieu in a field survey on May 23, 1991
 do hereby certify that under requirements of P.A. 74, Michigan P.A. of 1970, the corner points mentioned in lines 1 and 2 above were in conformance with regulations and rules therefore as required in the current manual of survey instructions of the United States Department of the Interior, Bureau of Land Management or by a decree of a Court of Law and/or that the corner points mentioned in lines 3, 4 and 5 above were in conformance with the rules of the Michigan Board of Land Surveyors or by a Decree of a Court of Law, established, re-established, monumented, re-monumented, recovered, found as expressed below.

NOTE: Not more than 4 corners, all in the same town and range, may be recorded on this certificate.

- A. Description of original monument and accessories and/or subsequent restoration:
Original monument and accessories obliterated

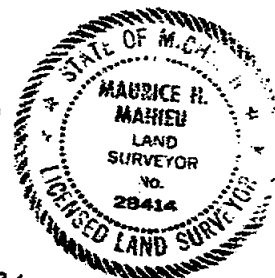
- B. Description of corner evidence found and/or method applied in restoring or reestablishing corner:

Found 1/2" Iron Rod in same location as corner recorded in Liber 3 of Land Corners, Page 167

This corner is being re-recorded to update the witnesses

- C. Description of monument for corner and accessories established to perpetuate locating the position of the corner
The 1/2" Iron rod was left in position and witnessed by:

Nail and Tag #28414 E Side 36" Maple, S 10° W, 25.00'
Nail and Tag NE Side 12" Basswood, S 40° E, 42.15'
Nail and Tag #28414 S. Side 42" Maple, N 45° W, 43.97'
Nail and Tag "1/4 corner", S. Side 54" Maple, N 50° E, 69.78'



Signed by

Surveyor's Michigan License No. 28414

Date

6-24-91

2381

LAND CORNER RECORDATION CERTIFICATE
Filing Requirement of Act 74, Mich. P.A. 1970

Attesters in

(County)

Located in:

Corner Code #

Paula Johnson
INGHAM COUNTY
REGISTER OF DEEDS
STEPHENS KYES & ASSOC

L-9 P-571

CRNR 9.00

2000-031987

1. Public Land Survey

T 2N R 1W

I-3

T R

T R

T R

2. Property Controlling
in Section

S

T R

3. Miscellaneous
Property in Sec.

S

T R

S

T R



2000-031987

Page 1 of 1

08/01/2000 01:53P

Register of Deeds Stamp & File Number

4. Lot No. _____, Recorded Plat _____

5. Private Claims _____

VeVay Township

	A	B	C	D	E	F	G	H	I	J	K	L	M
1													
2	6	5	4	3	2	1							
3													
4	7	8	9	10	11	12							
5													
6	10	17	16	15	14	13							
7													
8	19	20	21	22	23	24							
9													
10	30	29	28	27	26	25							
11													
12	31	32	33	34	35	36							
13													

I, James E. Stephens, in a field survey on June 6, 2000 do hereby state that under requirements of P.A. 74, Michigan P.A. of 1970, the corner points mentioned in lines 1 and 2 above were in conformance with regulations and rules therefore as required in the current manual of survey instructions of the United States Department of the Interior, Bureau of Land Management or by a decree of a Court of Law and for that the corner points mentioned in lines 3, 4 and 5 above were in conformance with the rules of the Michigan Board of Land Surveyors or by a Decree of a Court of Law; established, re-established, monumented, recovered, found as expressed below:

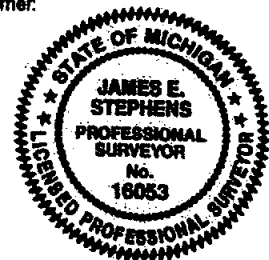
NOTE: Not more than 2 corners, all in the same town and range, may be recorded on this certificate.

A. Description of original monument and accessories and/or subsequent restoration:
Original monument and accessories were obliterated.

B. Description of corner evidence found and/or method applied in restoring or reestablishing corner:
A railroad spike was found in the intersection Columbia Road and Ives Road 2 inches below asphalt road surface in the location indicated in L.C.R.C. recorded in Liber 1, Page 483.

This Certificate is to up date witness information.

C. Description of monument for corner and accessories established to perpetuate locating the position of the corner:
Railroad spike witnessed by:
Survey Tag No. 16053 in West side of utility pole S30°E 125.70'
Survey Tag No. 30090 in South side of utility pole N45°E 59.53'
Survey Tag No. 30090 in East side of 12" Elm tree S25°W 90.33'
Chisled "X" in top of 12" C.M.P. S45°W 30.00'



Signed by

Surveyor's Michigan License No.

16053

Date July 27, 2000