

LAND CORNER RECORDATION CERTIFICATE
Filing Requirement of Act 74, Mich. P.A. 1970
VEVAY TOWNSHIP

For corners in

INGHAM

(County)

Located In:

Corner Code #

1. Public Land Survey

T 2N R 1W

L-3

T R

T R

T R

2. Property Controlling
in Section

S T R

S T R

3. Miscellaneous

S T R

Property in Section

S T R

Paula Johnson-
INGHAM COUNTY
REGISTER OF DEEDS
OFFICIAL SEAL



L-12 P-95

CRNR 17.00

2005-036293



2005-036293

Page: 1 of 2

07/13/2005 08:32

Register of Deeds Stamp & File Number

4. Lot No. , Recorded Plat

5. Private Claims

I, RON HELSEL, in A field survey on MAY 10, 2005 do hereby state that under requirements of P.A. 74, Michigan P.A. of 1970, the corner points mentioned in lines 1 and 2 above were in conformance with regulations and rules therefore as required in the current manual of survey instructions of the United States Department of the Interior, Bureau of Land Management or by A decree of A Court of Law and/or that the corner points mentioned in lines 3, 4 and 5 above were in conformance with the rules of the Michigan Board of Land Surveyors or by A Decree of A Court of Law; established, re-established, monumented, recovered, found as expressed below:

	A	B	C	D	E	F	G	H	I	J	K	L	M
1													
2	6			5			4			3		2	1
3													
4	7			8			9			10		11	12
5													
6	18			17			16			15		14	13
7													
8	19			20			21			22		23	24
9													
10	30			29			28			27		26	25
11													
12	31			32			33			34		35	36
13													

NOTE: Not more than 2 corners, all in the same town and range, may be recorded on this certificate.

A. Description of original monument and accessories and/or subsequent restoration:
ORIGINAL MONUMENT: POST SET BY H. PARKE, U.S. DEPUTY SURVEYOR, MAR. 1826. SET AT AVERAGE DISTANCE 40.265 CHAINS. SUGAR 24", S60E, 19 1/2 LINKS; BEECH 10", N11W, 4 LINKS.

1) P.A. 74 CORNER, LIBER4, PAGE 340, SEPT. 13, 1978, R. LESTER P.S. 18998.

"EXCAVATED HOLE 5.8' X 7.5' TO AN AVERAGE DEPTH OF 3.5' AT INTERSECTION OF COLUMBIA & DIAMOND ROADS. FOUND 1.3' X 0.75 POINTED STONE SURROUNDED BY PIECES OF BROKEN GLASS, 1.5' FEET BELOW ROAD SURFACE... MEASURED EAST TO M-3 ± 2660', MEASURED WEST TO K-3 ± 2630. ACCEPTED POINT ED STONE SURROUND BY BROKEN GLASS AS CORNER. SET 4" X 36" CONCRETE MONUMENT WITH 1/2" X 38" RE-ROD & CAP #18998 IN LOCATION OF STONE." NAIL & TAG #18998 WEST SIDE MULTIPLE ASH, SOUTHEAST, 83.43'; NAIL & TAG #18998, EAST SIDE 8" PINE, SOUTHWEST, 77.14'; NAIL & TAG #18998, SOUTH SIDE 40" MAPLE, NORTHWEST, 58.43'; NAIL & TAG #18998, WEST SIDE AT ROOT 36" MAPLE, NORTHEAST, 107.72'

(CONTINUED ON BACK SIDE)

B. Description of corner evidence found and/or method applied in restoring or reestablishing corner:

FOUND 1/2" RE-ROD IN A MONUMENT BOX AT C/L'S OF DIAMOND AND COLUMBIA ROADS. FOUND THE PINE SOUTHWEST AND MAPLE NORTHWEST (NOW DEAD), AS THE ONLY TWO REMAINING WITNESSES FROM ITEM 1 ABOVE. FOUND CONCRETE MONUMENT 6" BELOW THE TOP OF THE RE-ROD. ACCEPTED THE POSITION OF THE RE-ROD AS A PERPETUATION OF THE CORNER FROM THE EXCAVATION AND TESTIMONY FROM ITEM 1 ABOVE. SET A STANDARD INGHAM COUNTY DISK STAMPED P.A. 345, P.S. 18994 ON TOP OF THE RE-ROD.

C. Description of monument for corner and accessories established to perpetuate locating the position of the corner:
INGHAM COUNTY DISK ON A 1/2" RE-ROD AND 30" X 4" DIAMETER CONCRETE MONUMENT IN MONUMENT BOX.

FOUND NAIL & TAG 30090 SOUTHEAST/SIDE POWER POLE, AZ. N55°E, 35.05 FEET

FOUND KEBS NAIL & TAG 30090 SOUTHEAST/SIDE 15" PINE 3 FEET BELOW ROAD GRADE, SET NAIL & TAG 18994 ABOVE, S60°W, 76.80 FEET

NORTHEAST CORNER OF AMERITECH BOX #74, S30°W, 75.10 FEET

SET NAIL & TAG 18994 WEST/SIDE OF POWER POLE, A16°E, 129.41 FEET

SET NAIL & TAG 18994 SOUTH/SIDE 11" PINE, N54°W, 86.83 FEET

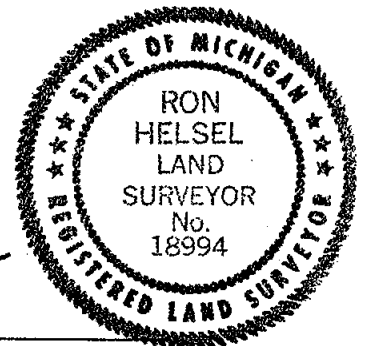
P.A. 345 INGHAM COUNTY
PEER APPROVED 08/24/2005

Signed by

Ron Helsel

Date 6-30-2005

Surveyor's Michigan License No. 18994



L-3, T2N, R1W, VEVAY TOWNSHIP CONTINUED

2) P.A. 132 SURVEY, LIBER 3, PAGES 1134 & 1135, JAN. 28, 1980, G. YOUNG P.S. 17640. RECORDED 2634.12 FEET TO L-4.

"SET 3/4" PIPE IRON PIPE IN MON. BOX. 1/2" IRON PIPE, NORTH, 33.00'

18" OAK, NNW, 25.0'

40" STUMP, SOUTHWEST, 47.03'

LIBER 5, PAGE 93, RECORDED

(THIS IS RECORDED AS L-3 OF T2N, R1E INGHAM TOWNSHIP)

3) P.A. 132 SURVEY, LIBER 4, PAGES 250-251, APRIL 1, 1981, R. LESTER. RECORDED 5230.35 FEET TO L-1. HE CALLED FOR THE SAME MONUMENT AS ITEM 1 ABOVE.

NAIL & TAG WEST SIDE MULTIPLE ASH, SOUTHEAST, 83.43'

NAIL & TAG EAST SIDE 8" PINE, SOUTHWEST, 77.14'

NAIL & TAG SOUTH SIDE 40" MAPLE, NORTHWEST, 58.43'

NAIL & TAG WEST SIDE AT BASE 36" MAPLE, NORTHEAST, 107.72'

4) P.A. 132 SURVEY, LIBER 6, PAGES 965-967, D. LOHR P.S. 30090. RECORDED 2662.50 FEET TO M-3 AND 5230.80 FEET TO L-1.

"CONC. MON. IN MON. BOX/CONC. RING."

SET NAIL & TAG P. POLE, AZ. $49^{\circ}25'$, 33.06'

FD. NAIL & TAG 8" PINE, AZ. $235^{\circ}14'$, 77.14'

FD. NAIL & TAG 40" MAPLE, AZ. $313^{\circ}30'$, 58.43'

FD. NAIL & TAG P. POLE, AZ. $168^{\circ}13'$, 129.42'



2005-036293
Page: 2 of 2
07/13/2005 08:32P

LAND CORNER RECORDATION CERTIFICATE
Filing Requirement of Act 74, Mich. P.A. 1970
VEVAY TOWNSHIP

For corners in

INGHAM

(County)

Located In:

Corner Code #

1. Public Land Survey

T 2N R 1W

M-3

T R

T R

T R

2. Property Controlling
in Section

S T R

S T R

3. Miscellaneous

S T R

Property in Section

S T R

Paula Johnson-
INGHAM COUNTY
REGISTER OF DEEDS
OFFICIAL SEAL



L-12 P-105

CRNR 17.00

2005-036298



2005-036298

Page: 1 of 2
07/13/2005 08:32

Register of Deeds Stamp & File Number

4. Lot No. , Recorded Plat

5. Private Claims

I, RON HELSEL, in A field survey on MAY 10 & 24, 2005 do hereby state that under requirements of P.A. 74, Michigan P.A. of 1970, the corner points mentioned in lines 1 and 2 above were in conformance with regulations and rules therefore as required in the current manual of survey instructions of the United States Department of the Interior, Bureau of Land Management or by A decree of A Court of Law and /or that the corner points mentioned in lines 3, 4 and 5 above were in conformance with the rules of the Michigan Board of Land Surveyors or by A Decree of A Court of Law; established, re-established, monumented, recovered, found as expressed below:

NOTE: Not more than 2 corners, all in the same town and range, may be recorded on this certificate.

A. Description of original monument and accessories and/or subsequent restoration:

ORIGINAL MONUMENT: POST SET BY J. WAMPLER, U.S. DEPUTY SURVEYOR, FEB. 7, 1824. ASH 9", N8 1/2W, 5 1/2 LINKS; ASH 9", S29W, 33 LINKS.

1) P.A. 74 CORNER, LIBER 4, PAGE 16, MAR. 28, 1977, R. STEADMAN P.S. 11370.

"DUG HOLE IN COLUMBIA ROAD OPPOSITE FENCES NORTH AND SOUTH, AND ABOUT 18" BELOW THE SURFACE, FOUND AN IRON CUTTER BAR 36" LONG WITH AN OLD AXE HEAD SLIPPED ONTO IT. REMOVED BAR & AXE HEAD AND REPLACED THEM WITH A 1/2" IRON PIPE AND MONUMENT BOX."

UTILITY POLE, N69°E, 53.73 FT.

WOOD ANCHOR POST, NORTH, 28.07 FT.

3" HICKORY, S25°W, 42.58 FT.

(CONTINUED ON BACK SIDE)

B. Description of corner evidence found and/or method applied in restoring or reestablishing corner:

FOUND A 1/2" I.D. X 24" PIPE 1" ABOVE ROAD GRADE OF HOWELL ROAD, ON LINE AND OPPOSITE WOOD ANCHOR POSTS TO THE NORTH AND SOUTH. FOUND THE HICKORY AND THE ANCHOR POST TO THE NORTH AS THE 2 REMAINING WITNESSES DESCRIBED BY SURVEYOR STEADMAN. EXCAVATED AND FOUND THE MONUMENT BOX 3 -1/2" BELOW. PIPE BENT TO THE SOUTH. ACCEPTED THE FINDINGS OF SURVEYOR STEADMAN AS A MARKER FOR THE PERPETUATION OF THE CORNER AND REPLACED THE PIPE WITH A STANDARD INGHAM COUNTY MONUMENT AND PLACED RINGS ON THE MONUMENT BOX TO BRING IT TO THE ROAD SURFACE.

C. Description of monument for corner and accessories established to perpetuate locating the position of the corner:

3/4" X 24" FORM PIN AND ALUMINUM DISK STAMPED P.A. 345, P.S. NO. 18994 IN MONUMENT BOX ON CENTERLINE OF COLUMBIA ROAD. FENCE LINES NORTH & SOUTH.

FOUND KEBS NAIL & TAG SOUTHEAST/SIDE POWER POLE, N67°E, 45.77 FEET

FOUND NAIL & TAG 11370 EAST/SIDE 8" WOOD ANCHOR POST, NORTH, 28.30 FEET

SET NAIL & TAG 18994 NORTHEAST/SIDE TWIN HICKORY (8"-8"), S35°E, 42.38 FEET

FOUND KEBS NAIL & TAG NORTHWEST/SIDE SERVICE POLE, S47°W, 63.84 FEET

P.A. 345 INGHAM COUNTY
PEER APPROVED 06/21/2005



Signed by

Ron Helsel

Date

6-30-2005

Surveyor's Michigan License No.

18994

FORM APPROVED BY MICHIGAN STATE BOARD OF PROFESSIONAL SURVEYORS, JAN. 28, 1971

REVISED MAY 14, 1975

REVISED JAN., 1983

REVISED OCT., 1995

M-3, T2N, R1W, VEVAY TOWNSHIP CONTINUED

2) P.A. 132 SURVEY, LIBER 3, PAGES 1124, 1125, JAN. 28, 1980, G. YOUNG P.S. 17640. RECORDED 2620.78 FEET TO M-4. SURVEYOR YOUNG CITED LIBER 5, PAGE 94 OF CORNERS AND GAVE THE SAME WITNESSES. THIS WAS FOUND TO BE THE L.C.R.C. FORM FOR M-3 OF INGHAM TOWNSHIP, T2N, R1E.

3) P.A. 132 SURVEY, LIBER 6, PAGES 965-967, JUNE 18, 1992, D. LOHR P.S. 30090. RECORDED 2662.50 FEET, WEST TO L-3 AND 2667.627 FEET NORTH TO M-2. FOUND 3/4" PIPE IN MON. BOX."

FOUND NAIL & TAG 12" TREE, AZ. 19°, 27.65'

FOUND NAIL & TAG P. POLE, AZ. 65°, 53.70'

FOUND NAIL & TAG 30" TREE, AZ. 178°, 84.80'

NO. EDGE SIGN, AZ. 322°, 18.98'

(NOTE: THESE WITNESSES APPEAR TO BE FOR A DIFFERENT CORNER)



2005-036298

Page: 2 of 2

07/13/2005 08:32P



LAND CORNER RECORDATION CERTIFICATE
Filing Requirement of Act 74, Mich. P.A. 1970
VEVAY TOWNSHIP

For corners in

INGHAM

(County)

Located In:

Corner Code #

1. Public Land Survey

T 2N R 1W

K-4

T R

T R

T R

T R

2. Property Controlling
in Section

S

T R

S

T R

3. Miscellaneous

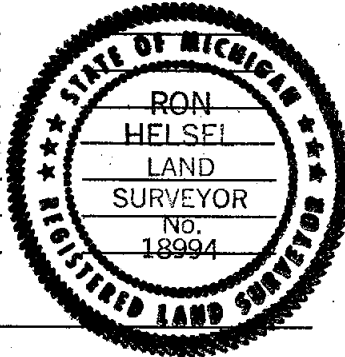
S

T R

Property in Section

S

T R



Register of Deeds Stamp & File Number

4. Lot No. , Recorded Plat

5. Private Claims

I, RON HELSEL, in A field survey on JULY 20, 2005 do hereby state that under requirements of P.A. 74, Michigan P.A. of 1970, the corner points mentioned in lines 1 and 2 above were in conformance with regulations and rules therefore as required in the current manual of survey instructions of the United States Department of the Interior, Bureau of Land Management or by A decree of A Court of Law and/or that the corner points mentioned in lines 3, 4 and 5 above were in conformance with the rules of the Michigan Board of Land Surveyors or by A Decree of A Court of Law; established, re-established, monumented, recovered, found as expressed below:

NOTE: Not more than 2 corners, all in the same town and range, may be recorded on this certificate.

A. Description of original monument and accessories and/or subsequent restoration:
ORIGINAL MONUMENT: POST SET BY H. PARKE, U.S. DEPUTY SURVEYOR, MARCH, 1826. SUGAR 12", S86W, 3 LINKS; SUGAR 20", N72E, 46 LINKS.

1) P.A. 74 CORNER, LIBER 1, PAGE 185, OCT. 22, 1971, G. LESTER P.S. 17624.

"SET 1/2" BAR ON LINE BETWEEN NORTHEAST CORNER AND SOUTHEAST CORNER OF SECTION ON LINE WITH OLD FENCE EAST AND WEST. FIELD MEASUREMENT NORTH AND SOUTH IN CLOSE ACCORD WITH PRORATIONAL GOVERNMENT MEASUREMENT. 1/2" BAR 1.0' WEST OF CENTERLINE EVERY ROAD." NAIL & TAG NORTHWEST SIDE OF POWER POLE, NORTHEAST, 50.23';
NAIL & TAG SOUTH SIDE 24" OAK, WNW, 25.90';
NAIL & TAG NORTH SIDE OF 20" BASSWOOD ESE, 41.28'

(CONTINUED ON BACK SIDE)

B. Description of corner evidence found and/or method applied in restoring or reestablishing corner:

FOUND A 1/2" IRON BAR IN A MONUMENT BOX 1 FOOT WEST OF CENTERLINE OF DIAMOND ROAD ON LINE WITH FENCE TO EAST AND OCCUPATION LINE TO WEST. FOUND ALL THE WITNESSES FROM ITEM 15. MON. BOX HAD A 3.5 FOOT PATCH AROUND IT. EXCAVATED DOWN 48" TO THE OLD CLAY ROAD BED THRU SAND WHICH ENCOMPASSED THE AREA UNDER THE PATCH. FOUND AN ANGLE IRON ANCHOR POST TO EAST WHICH SUPPORTS THE 3 ROD R/W RULE. MEASURED NORTH, 2646.50 FEET TO K-3; SOUTH, 2648.81 FEET TO K-5 AND EAST, 2661.38 FEET TO L-4. ACCEPTED G. LESTER'S POSITION OF THE CORNER AS A PROPER METHOD FOR RE-ESTABLISHING A LOST CORNER. REPLACED THE BAR WITH STANDARD INGHAM COUNTY MONUMENT.

C. Description of monument for corner and accessories established to perpetuate locating the position of the corner:

3/4" X 24" FORM PIN AND ALUMINUM DISK STAMPED P.A. 345, P.S. NO. 18994 IN MON. BOX 1 FOOT WEST OF C/L.

FOUND KEBS NAIL & TAG NORTHEAST/SIDE 30" OAK, N62°W, 25.25 FEET

FOUND KEBS NAIL & TAG NORTH/SIDE 14" ASH, S85°W, 26.83 FEET

FOUND NAIL & TAG 16053 NORTH/SIDE TRIPLE BASSWOOD (30"-14"-10") S65°E, 29.33 FEET

FACE OF ANGLE IRON ANCHOR POST, EAST, 24.90 FEET

P.A. 345 INGHAM COUNTY

PEER APPROVED 7/20/2005 AC

Signed by

Date

7-29-05

Surveyor's Michigan License No.

18994

K-4, T2N, R1W, VEVAY TOWNSHIP CONTINUED

- 2) P.A. 132 SURVEY, LIBER 1, PAGES 93-95, OCT. 22, 1971, G. LESTER. CALLED FOR SAME MONUMENT AND WITNESSES AS ITEM 1 ABOVE. RECORDED 2647.63 FEET TO K-3
- 3) P.A. 132 SURVEY, LIBER 1, PAGES 240-241, APRIL 24, 1972, R. LESTER P.S. 18998. CALLED FOR THE SAME WITNESSES AND MONUMENT AS IN ITEM 1 ABOVE. RECORDED 2648.80 FEET TO K-5 AND 5317.84 FEET TO M-4
- 4) P.A. 132 SURVEY, LIBER 1, PAGES 331-332, JUNE 26, 1972, J. STEPHENS P.S. 16053. CALLED FOR THE SAME MONUMENT AND WITNESSES AS ITEM 1 ABOVE. RECORDED 2646.67 FEET TO K-5.
- 5) COLUMBIA ESTATES, LIBER 31 OF PLATS, PAGES 35-36, FEB. 1, 1973, J. STEPHENS. CORNER USED AS POINT OF BEGINNING FOR. PLAT.
- 6) P.A. 132 SURVEY, LIBER 2, PAGES 851-853, AUG. 17, 1976, J. STEPHENS. HE CALLED FOR SAME MONUMENT AND WITNESSES FOR CORNER. RECORDED 2645.27 FEET TO K-3.
- 7) P.A. 132 SURVEY, LIBER 3, PAGES 473-474, AUG. 16, 1978, A. WILLIAMS P.S. 21275. CORNER MONUMENT NOT DESCRIBED, WITNESSES SAME AS ITEM 1 ABOVE.
- 8) P.A. 132 SURVEY, LIBER 3, PAGES 716-718, JAN. 16, 1979, A. WILLIAMS. CORNER MONUMENT NOT DESCRIBED. WITNESSES SAME AS ITEM 1 ABOVE. RECORDED 5271.46 FEET TO I-4.
- 9) P.A. 132 SURVEY, LIBER 4, PAGE 82, AUG. 6, 1980, A. WILLIAMS. MONUMENT NOT DESCRIBED, WITNESSES SAME AS ITEM 1 ABOVE.
- 10) P.A. 132 SURVEY, LIBER 6, PAGED 314-318, AUG. 6, 1990, D. LOHR P.S. 30090. RECORDED 2646.73 FEET TO K-3 AND 2659.98 FEET TO J-4. "FOUND 1/2" BAR." SOUTHWEST CORNER IRON ANCHOR POST, EAST, 24.93'
NAIL & TAG WEST SIDE 18" OAK, S25°E, 77.00'
NAIL & TAG SOUTH SIDE 15" ASH, WEST, 27.03'
NAIL & TAG NORTH SIDE 24" BASS., S75°E, 29.35'
- 11) P.A. 132 SURVEY, LIBER 6, PAGES 517-518, NOV. 21, 1990, AND RE-RECORDED IN LIBER 6, PAGES 1077-1078, NOV. 30, 1992, M. MAHIEU P.S. 28414. RECORDED 2648.68 FEET TO K-5. "FOUND 1/2" BAR 1' WEST OF CENTERLINE OF EVERY ROAD.' WITNESSES SAME AS ITEM 1 ABOVE.
- 12) COLUMBIA ESTATES NO.2, LIBER 46 OF PLATS, PAGES 43-46, JUNE 5, 1991, M. MAHIEU. RECORDED 5304.27 FEET TO I-4. CORNER CITES LIBER 1, PAGE 165 OF CORNERS.
- 13) P.A. 132 SURVEY, LIBER 7, PAGE 114-117, MAR. 4, 1994, R. HELSEL P.S. 18994. RECORDED 2660.40 FEET TO J-4 AND 2648.93 FEET TO K-5. "FOUND 1/2" BAR 1.0' WEST CENTERLINE OF EVERY ROAD."
SET NAIL & TAG #18994 SOUTHEAST/SIDE POWER POLE, N30°E, 50.63'
SET NAIL & TAG #18994 NORTH/SIDE 24" OAK, N70°W, 25.31'
FD. NAIL & TAG #17624 NORTH/SIDE 20" MAPLE, S60°E, 29.32'
SET NAIL & TAG #18994 NORTH/SIDE 16" POPLAR, S80°W, 26.92'
- 14) UNRECORDED SURVEY, DATED MARCH 31, 1995, JOB. NO. 95-66574, R. HELSEL P.S. 18994. RECORDED 2648.92 FEET, SOUTH TO K-5 AND FIELD NOTES COMPUTE 2661.47 FEET, EAST TO L-4. "FOUND 1/2" BAR 1.0 FEET WEST OF CENTERLINE EVERY ROAD."
FOUND NAIL & TAG 18994 SOUTHEAST/SIDE POWER POLE, N30°E, 50.63'
FOUND NAIL & TAG 18994, N/SIDE 24" OAK, N70°W, 25.31'
FOUND NAIL & TAG N/SIDE 20" MAPLE, S60°E, 29.32'
FOUND NAIL & TAG 18994 N/SIDE 16" POPLAR, S80°W, 26.92'
- 15) P.A. 74 CORNER, LIBER 9, PAGE 569, AUG. 1, 2000, J. STEPHENS P.S. 16053. "FOUND 1/2" DIAMETER STEEL ROD IN A MONUMENT BOX AS INDICATED ON A CERTIFICATE OF SURVEY BY P.S. 30090, RECORDED IN LIBER 6, PAGE 318."
SOUTHWEST CORNER IRON ANCHOR POST EAST 24.93'
NAIL & TAG SOUTH SIDE 15" ASH TREE WEST 27.03'
NORTH SIDE 24" BASSWOOD TREE S75°E 29.35'
NAIL & TAG NORTH SIDE 30" OAK TREE, N80°W, 25.22'



LAND CORNER RECORDATION CERTIFICATE
Filing Requirement of Act 74, Mich. P.A. 1970
VEVAY TOWNSHIP

For corners in

INGHAM

(County)

Located In:

Corner Code #

1. Public Land Survey

T 2N R 1W K-5

T R

T R

T R

T R

2. Property Controlling
in Section

S T R

S T R

3. Miscellaneous

S T R

Property in Section

S T R

4. Lot No. , Recorded Plat

5. Private Claims

I, RON HELSEL, in A field survey on JULY 20, 2005 do hereby state that under requirements of P.A. 74, Michigan P.A. of 1970, the corner points mentioned in lines 1 and 2 above were in conformance with regulations and rules therefore as required in the current manual of survey instructions of the United States Department of the Interior, Bureau of Land Management or by A decree of A Court of Law and /or that the corner points mentioned in lines 3, 4 and 5 above were in conformance with the rules of the Michigan Board of Land Surveyors or by A Decree of A Court of Law; established, re-established, monumented, recovered, found as expressed below:

NOTE: Not more than 2 corners, all in the same town and range, may be recorded on this certificate.

A. Description of original monument and accessories and/or subsequent restoration:

ORIGINAL MONUMENT: POST SET BY H. PARKE, U.S. DEPUTY SURVEYOR, MARCH, 1826. B. OAK 17", S78W, 5 LINKS; BEECH 10", N65 1/2E, 22 LINKS. RECORDED 40.295 CHAINS TO L-5.

1) VOL. 2, PAGE 106, APRIL 8, 1874, T.J. BROWN, C. S. CORNER NOT DESCRIBED OR WITNESSED. RECORDED 40.34 CHAINS TO J-5.

2) P.A. 74 CORNER, LIBER 1, PAGE 469, APRIL 24, 1972, R. LESTER P.S. 18998. "SET 1/2" SQUARE BAR IN CENTERLINE OF EVERY ROAD. AN OLD FENCE LINE EAST AND WEST. FIELD MEASUREMENTS NORTH, EAST, AND WEST IN CLOSE ACCORD WITH ORIGINAL GOVERNMENT SURVEY." NAIL & CAP IN 36" DOUBLE POPLAR TREE, NORTHWEST, 25.75'; PK NAIL IN FENCE CORNER POST, EAST, 33.67'; PK NAIL IN FENCE CORNER POST, WEST, 27.24'

3) P.A. 132 SURVEY, LIBER 1, PAGES 331-332, JUNE 26, 1972, J. STEPHENS P.S. 16053. "FOUND 1/4" IRON ROD; FOUND POLARIS SURVEY TAGS W. SIDE TWIN 24" COTTONWOOD, N37°56'E, 25.63'; PK NAIL IN FENCE POST, S89°33'E, 33.63'; PK NAIL IN FENCE POST, S89°38'W, 27.30'. RECORDED 2646.67 FEET TO K-4

(CONTINUED ON BACK SIDE)

B. Description of corner evidence found and/or method applied in restoring or reestablishing corner:

FOUND A 1/2" BY 24" IRON RE-ROD IN A MONUMENT BOX IN AN APPARENT FILL AREA. ALL THE WITNESSES FROM L.C.R.C IN LIBER 1, PAGE 469 ARE GONE. THE FENCE LINE TO THE WEST STILL EXIST BUT THE ANCHOR POST IS GONE. FOUND ALL THE WITNESSES FROM ITEM 18, STILL INTACT. THERE WAS A 3.5 FEET DIAMETER PATCH AROUND THE BOX. EXCAVATED DOWN 4 FEET 7" THRU SAND TO THE OLD CLAY ROAD BED. THE SAND ENCOMPASSES THE 3.5 FOOT DIAMETER PATCH. EVIDENTLY SOME UNKNOWN SURVEYOR HAS MADE THIS EXCAVATION. ACCEPTED THE POSITION OF THE BAR AFTER TRAVERSE FOUND IT TO BE VERY NEARLY ON LINE BETWEEN THE NORTHWEST AND THE SOUTHWEST CORNER OF SECTION 12. REPLACED RE-ROD WITH STANDARD INGHAM COUNTY MONUMENT. MEASURED NORTH, 2648.81 FEET TO K-4; EAST, 2663.12 FEET TO L-5.

C. Description of monument for corner and accessories established to perpetuate locating the position of the corner:

3/4" X 24" FORM PIN AND ALUMINUM DISK STAMPED P.A. 345, P.S. NO. 18994 IN MON. BOX ON CENTERLINE EVERY ROAD.

FOUND KEBS NAIL & TAG NORTH/SIDE UTILITY POLE, AZ. 100°, 30.39 FEET

FOUND NAIL & TAG 25832 (L. BRYAN) SOUTH/SIDE 10" SASSAFRAS, AZ. 255°, 28.35 FEET

FOUND NAIL & TAG 18998 WEST/SIDE 36" RED OAK, AZ. 147°, 43.05 FEET

FOUND NAIL & TAG 18998 EAST/SIDE 36" COTTONWOOD, AZ. 359°, 155.27 FEET

P.A. 345 INGHAM COUNTY
PEER APPROVED 7/20/05 PL

Signed by

Ron Helsel

Date

7-29-05

Surveyor's Michigan License No.

18994

K-5, T2N, R1W, VEVAY TOWNSHIP, CONTINUED

- 4) P.A. 132 SURVEY, LIBER 1, PAGE 827, JULY 23, 1973, J. STEPHENS. REFERS TO LIBER 1 OF LAND CORNERS, PAGE 485 ONLY.
- 5) P.A. 132 SURVEY, LIBER 2, PAGE 445-446, AUG. 26, 1975, R. LESTER. "FOUND 1/4" IRON ROD." WITNESSES SAME AS ITEM 3 ABOVE. RECORDED 2648.88 FEET TO K-4.
- 6) P.A. 132 SURVEY, LIBER 2, PAGES 703-704, MAY 18, 1976, AND RE-RECORDED IN LIBER 1110-1111, MAY 19, 1977, R. LESTER. "FOUND 1/2" ROD AS RECORDED IN LIBER 1, PAGE 485." RECORDED 2648.88 FEET TO K-6 & 2662.55 FEET TO J-5. WITNESSES SAME AS ITEM 2 ABOVE.
- 7) P.A. 132 SURVEY, LIBER 2, PAGE 1076, APRIL 29, 1977, G. YOUNG P.S. 17640. "FOUND 1/4" ROD." WITNESS SAME AS ITEM 2 ABOVE.
- 8) P.A. 132 SURVEY, LIBER 3, PAGES 112-115, NOV. 22, 1977, A. WILLIAMS P.S. 21275. CITES LIBER 1, PAGE 469 ONLY.
- 9) P.A. 132 SURVEY, LIBER 3, PAGES 473-474, AUG. 16, 1978, A. WILLIAMS. MONUMENT NOT IDENTIFIED.
NAIL & CAP IN DOUBLE POPLAR, NORTHWEST 25.75'
PK NAIL IN FENCE POST EAST 33.67'
PK NAIL IN FENCE POST WEST 27.24'
- 10) P.A. 132 SURVEY, LIBER 3, PAGES 1036-1037, SEPT. 27, 1979, R. LESTER P.S. "RE-SET 1/2" BAR FROM WITNESSES." WITNESSES SAME AS ITEM 2 ABOVE. RECORDED 2648.88 FEET TO K-4.
- 11) P.A. 132 SURVEY, LIBER 4, PAGE 164, DEC. 2, 1980, G. YOUNG. CALLED FOR A 1/4" ROD WITH SAME WITNESSES AS ITEM 2 ABOVE.
- 12) P.A. 132 SURVEY, LIBER 4, PAGES 276-277, APRIL 20, 1981, G. YOUNG. SAME MONUMENT & WITNESSES AS ABOVE.
- 13) P.A. 132 SURVEY, LIBER 6, PAGES 517-518, NOV. 21, 1990 AND RE-RECORDED IN LIBER 6, PAGES 1077-1078, NOV. 30, 1992, M. MAHIEU P.S. 28414. RECORDED 2648.68 FEET TO K-4. "FOUND ROD."
NAIL & TAG IN WEST SIDE OF TWIN 24" COTTONWOOD, N38°E, 25.63'
PK NAIL IN TOP OF FENCE POST, S89°E, 33.64'
PK NAIL IN TOP OF FENCE POST, S90°W, 27.30'
- 14) P.A. 132 SURVEY, LIBER 7, PAGES 114-117, MAR. 4, 1994, R. HELSEL P.S. 18994. RECORDED 2648.93 FEET TO K-4 & 2663.74 FEET TO J-5. "FOUND IRON BAR IN CENTERLINE OF EVERY ROAD."
FOUND NAIL & TAG #18998 WEST /SIDE 24" COTTON WOOD, N37°E, 25.42'
SET NAIL & TAG #18994 WEST/SIDE 34" TWIN MAPLE, S55°E, 44.57'
SET NAIL & TAG #18994 WEST/SIDE 16" OAK, S15°E, 59.26'
SET NAIL & TAG #18994 NORTH/SIDE 24" POPLAR, S88°W, 40.08'
- 15) P.A. 132 SURVEY, LIBER 7, PAGES 300-303, JULY, 6, 1994, D. LOHR P.S. 30090. RECORDED 2663.87 FEET TO L-5 AND 2648.56' TO K-6. "FOUND 1/2" IRON IN MON BOX CENTERLINE EVERY RD. AND E-W FENCE."
FD. NAIL & TAG W/S TW. 24" COTTON, N38°E, 25.40'
FD. IRON W/CAP #18994, WEST, 33.00'
FD. NAIL & TAG #18994, SOUTHWEST/S 14" OAK, S19°E, 59.22'
FD. NAIL & TAG #18994 SOUTHWEST/S 30" POPLAR, S39°E, 44.60'
- 16) UNRECORDED SURVEY, DATED MARCH 31, 1995, JOB NO. 95-6574, R. HELSEL. RECORDED 2648.92 FEET, NORTH TO K-4 AND 2663.63 FEET, EAST TO L-5. "FOUND 1/2" IRON BAR IN CENTERLINE EVERY ROAD."
FOUND NAIL & TAG 18994 W/SIDE 24" COTTONWOOD, N37°E, 25.42'
FOUND NAIL & TAG 18994 W/SIDE 34" TWIN MAPLE, S55°E, 44.57'
FOUND NAIL & TAG 18994 W/SIDE 16" OAK, S15°E, 59.26'
FOUND NAIL & TAG 18994 N/SIDE 24" POPLAR, S88°W, 40.08'
- 17) P.A. 132 SURVEY, LIBER 8, PAGE 864, MAY 9, 2001, R. ENGER P.S. 28409. RECORDED 2663.93 FEET TO J-5. "1/2" IRON BAR IN MONUMENT BOX." NAIL IN 36" DOUBLE POPLAR TREE, NORTHWEST, 25.75'
PK NAIL IN FENCE CORNER POST, EAST, 33.67'
PK NAIL IN FENCE CORNER POST, WEST, 27.24'
- 18) P.A. 132 SURVEY, LIBER 8, PAGE 1209, SEPT. 16, 2003, R. LESTER. RECORDED 2648.14 FEET TO K-6. "1/2" BAR IN MONUMENT BOX."
FOUND KEBS NAIL & TAG NORTH SIDE U. POLE, MAG. AZ. 100°, 30.39'
FOUND NAIL & TAG #25832 SOUTH SIDE 10" SASSAFRAS MAG. AZ. 255°, 28.35'
SET GALV. NAIL AND 1 1/2" ALUMINUM TAG STAMPED "PS 18998 WITNESS" WEST SIDE 36" RED OAK MAG. AZ. 147°, 43.05'
SET GALV. NAIL AND 1 1/2" ALUMINUM TAG STAMPED "PS 18998 WITNESS" EAST SIDE 36" COTTONWOOD MAG. AZ. 359°, 155.27'



LAND CORNER RECORDATION CERTIFICATE
Filing Requirement of Act 74, Mich. P.A. 1970
VEVAY TOWNSHIP

For corners in

INGHAM

(County)

Located In:

Corner Code #

1. Public Land Survey

T 2N R 1W L-5

T R

T R

T R

2. Property Controlling
in Section

S T R

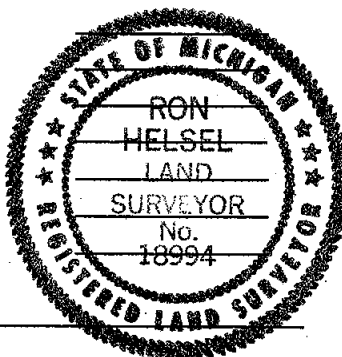
S T R

3. Miscellaneous

S T R

Property in Section

S T R



Register of Deeds Stamp & File Number

4. Lot No. , Recorded Plat

5. Private Claims

I, RON HELSEL, in A field survey on JULY 20, 2005 do hereby state that under requirements of P.A. 74, Michigan P.A. of 1970, the corner points mentioned in lines 1 and 2 above were in conformance with regulations and rules therefore as required in the current manual of survey instructions of the United States Department of the Interior, Bureau of Land Management or by A decree of A Court of Law and /or that the corner points mentioned in lines 3, 4 and 5 above were in conformance with the rules of the Michigan Board of Land Surveyors or by A Decree of A Court of Law; established, re-established, monumented, recovered, found as expressed below:

NOTE: Not more than 2 corners, all in the same town and range, may be recorded on this certificate.

A. Description of original monument and accessories and/or subsequent restoration:
ORIGINAL MONUMENT: POST SET BY H. PARKE, U.S. DEPUTY SURVEYOR, MAR. 1826. SET AT AVG. DISTANCE 40.295 CHAINS. LYNN 28", N58W, 8 LINKS; LYNN 24", S48E, 20 1/2 LINKS.

1) FROM CETA DOSSIER, FOLDER SET 1, PAGE 11, W.H. RAYNOR, C. S. JAN. 2, 1882. W. OAK 10", N5-1/2W, 350 LINKS (231'); RED OAK 24", S62W, 57 LINKS.

2) P.A. 74 CORNER, LIBER 4, PAGE 176, APRIL 17, 1978, A. WILLIAMS P.S. 21275. "FOUND 3/4" PIPE IN CENTERLINE OF DIAMOND ROAD AND ON LINE WITHE/W FENCE LINES." NAIL & TAG IN ANCHOR POLE, EAST, 31.20'; NAIL & TAG IN ANCHOR POLE, WEST, 31.60'; NAIL & TAG IN 26" HICKORY, N20°W, 90.22'

(CONTINUED ON BACK SIDE)

B. Description of corner evidence found and/or method applied in restoring or reestablishing corner:

FOUND A 5/8" RE-ROD 13" LONG IN A MONUMENT BOX ON THE CENTERLINE OF DIAMOND ROAD AND OPPOSITE A FENCE LINE TO THE EAST AND ON AN OCCUPATION LINE TO THE WEST. FOUND THE 1892 W. OAK CALLED FOR BY W. H. RAYNOR FROM ITEM 1 ABOVE. EXCAVATED 48" DOWN THRU GRAVEL AND CLAY. DID NOT FIND ANY EVIDENCE OF A PREVIOUS CORNER. RAYNOR CALLED FOR A TIE OF 350 LINKS TO A 10" W. OAK MEASURED 231.25 TO THE CENTER OF A 44" W. OAK. ACCEPTED THE POSITION OF THE 5/8" RE-ROD AS A PERPETUATED CORNER SUPPORTED BY THE FENCE TO THE EAST AND THE W. OAK. MEASURED NORTH, 2652.63 FEET TO L-4; WEST, 2663.12 FEET TO K-5 AND SOUTH, 2644.41 FEET TO L-6 AS PRESENTLY RECORDED.

C. Description of monument for corner and accessories established to perpetuate locating the position of the corner:

3/4" X 24" FORM PIN AND ALUMINUM DISK STAMPED P.A. 345, P.S. NO. 18994 IN MONUMENT BOX ON CENTERLINE OF ROAD. SET NAIL & TAG 18994 EAST/SIDE 44" WHITE OAK, N05°W, 231.25 FEET SET NAIL & TAG 18994 WEST/SIDE 26" WHITE ASH, S10°E, 158.57 FEET NORTHEAST CORNER BRICK HOUSE #504, S75°W, 92.45 FEET FOUND NAIL & TAG 17640, NORTH/SIDE POWER POLE, EAST, 31.11 FEET SET NAIL & TAG NORTH/SIDE 24" WALNUT, WEST, 43.70 FEET FOUND 3/4" PIPE WEST 32.96 FEET

P.A. 345 INGHAM COUNTY
PEER APPROVED 7/26/05 *PC*

Signed by

Ron Helsel

Date

7-29-05

Surveyor's Michigan License No.

18994

L-5, T2N, R1W, VEVAY TOWNSHIP CONTINUED.

- 3) P.A. 132 SURVEY, LIBER 300, APRIL 17, 1978, A. WILLIAMS. CORNER NOT IDENTIFIED. WITNESSES ARE THE SAME AS ITEM 2 ABOVE BUT IS CALLED THE CENTER OF SECTION ON HIS SURVEY.
- 4) P.A. 132 SURVEY, LIBER 3, PAGES 473-474, AUG. 16, 1978, A. WILLIAMS. RECORDED 2652.8 FEET TO K-5. CORNER MONUMENT NOT IDENTIFIED, WITNESSES SAME AS ITEM 2 ABOVE.
- 5) P.A. 132 SURVEY, LIBER 4, PAGE 164, DEC. 2, 1980, G. YOUNG P.S. 17640. "FOUND 3/4" PIPE." WITNESSES SAME AS ITEM 2 ABOVE..
- 6) P.A. 132 SURVEY, LIBER 4, PAGES 276-277, APRIL 20, 1981, G. YOUNG. MONUMENT AND WITNESSES SAME AS ITEM 2 ABOVE.
- 7) P.A. 132 SURVEY, LIBER 7, PAGES 300-303, JULY 6, 1994, D. LOHR P.S. 30090. RECORDED 2663.87 FEET TO K-5 AND 2644.73 FEET TO L-6. "FOUND 1/2" IRON IN MONUMENT BOX, CENTERLINE DIAMOND ROAD AND E-W FENCE."
FD. NAIL & TAG N/S POLE, EAST, 31.20'
FD. NAIL & TAG S/S POLE, WEST, 31.60'
SET NAIL & TAG 30090 SOUTHWEST/S 14" ELM, S20°E, 90.22'
SET NAIL & TAG 30090 W/S TRI-12" ELM, N12°E, 86.90'
- 8) UNRECORDED SURVEY, DATED MARCH 31, 1995, JOB NO. 95-6574, R. HELSEL P.S. 18994. "FOUND 5/8" RE-BAR IN MON. BOX IN CENTERLINE DIAMOND ROAD ON E-W F/L." TRAVERSE NOTES FROM JOB: 2663.26 FEET, WEST TO K-5 & 2652.65 FEET, NORTH TO L-4.
FOUND NAIL & TAG 30090 W/SIDE 12" CHINESE ELM, N15E, 86.91'
FOUND NAIL & TAG 17640 S/SIDE UTILITY POLE, WEST, 31.59'
FOUND NAIL & TAG 17640 N/SIDE UTILITY POLE, EAST, 31.17'
FOUND NAIL & TAG 30090 W/SIDE 14" CHINESE ELM, S15°E, 90.59'
NORTHEAST CORNER FOUNDATION HOUSE #504, S80°W, 92.41'
- 9) P.A. 132 SURVEY, LIBER 8, PAGES 332-333, NOV. 2, 1998, M. MAHIEU P.S. 28414. RECORDED 2644.43 FEET TO L-6. "5/8" IRON ROD IN MONUMENT BOX"
NAIL & TAG 17640 N. SIDE UTILITY POLE, EAST, 31.14'
N& 17640 S. SIDE UTILITY POLE, WEST, 31.62'
NAIL & TAG 25832 W. SIDE TRIPLE ELM, N25°E, 86.78'
NAIL & TAG 25832 W. SIDE 18" ELM, S30°E, 90.24 '



LAND CORNER RECORDATION CERTIFICATE
Filing Requirement of Act 74, Mich. P.A. 1970
VEVAY TOWNSHIP

For corners in

INGHAM

(County)

Located In:

Corner Code #

1. Public Land Survey

T 2N R 1W

L-4

2. Property Controlling
in Section

S

T

R

3. Miscellaneous

S

T

R

Property in Section

S

T

R

4. Lot No. , Recorded Plat

5. Private Claims

I, RON HELSEL, in A field survey on MAY 24 & JULY 20, 2005 do hereby state that under requirements of P.A. 74, Michigan P.A. of 1970, the corner points mentioned in lines 1 and 2 above were in conformance with regulations and rules therefore as required in the current manual of survey instructions of the United States Department of the Interior, Bureau of Land Management or by A decree of A Court of Law and /or that the corner points mentioned in lines 3, 4 and 5 above were in conformance with the rules of the Michigan Board of Land Surveyors or by A Decree of A Court of Law; established, re-established, monumented, recovered, found as expressed below:

NOTE: Not more than 2 corners, all in the same town and range, may be recorded on this certificate.

A. Description of original monument and accessories and/or subsequent restoration:
CORNER NOT SET IN ORIGINAL GOVERNMENT SURVEY.

1) CORNER REFERRED TO IN FOLDER SET #1, PAGE 1 BY W.H. RAYNOR, DATE UNKNOWN BUTTERNUT 6", N7E, 38 LINKS; CHERRY ?, S88E, 35 LINKS.

2) P.A. 74 CORNER LIBER 4, PAGE 383, R. LESTER P.S. 18998. "EXCAVATED HOLE 6' X 6' TO AVG. DEPTH OF 2.5' IN CENTERLINE OF DIAMOND ROAD ON EXTENDED FENCE LINE TO THE WEST & TREE LINE TO THE EAST. FOUND LARGE POINTED STONE, 1.7' IN LENGTH AT BASE AND 0.4' AT TOP, SURROUNDED BY RED BRICK AND SMALLER STONES, ON FENCE LINE TO WEST & TREE LINE TO EAST, \pm 1 WEST OF CENTERLINE OF DIAMOND ROAD. MEASURED NORTH \pm 2620' TO L-3, MEASURED SOUTH \pm 2650' TO L-5. ACCEPTED POINTED STONE AS CORNER. SET 4" X 36" CONCRETE MONUMENT WITH CAP 18998 IN LOCATION OF STONE." NAIL & TAG #18998, SOUTHEAST SIDE 30" HICKORY, SOUTHWEST, 122.66'; NAIL & TAG #18998, SOUTHEAST SIDE 24" HICKORY, SOUTHWEST, 183.85'; NAIL & TAG #18998, WEST SIDE 13" ASH, SOUTHEAST, 77.80'; NAIL & TAG #18998, EAST SIDE 21" MAPLE, NORTHWEST, 108.15'

(CONTINUED ON BACK SIDE)

B. Description of corner evidence found and/or method applied in restoring or reestablishing corner:

FOUND THE CONCRETE MONUMENT FROST HEAVED ABOVE ROAD SURFACE AND 1 FOOT WEST OF THE CENTERLINE OF DIAMOND ROAD. ACCEPTED THE POSITION OF THE CORNER BASED ON THE EXCAVATION AND STONE FOUND IN ITEM 2 ABOVE. CUT OFF TOP 6" OF MONUMENT AND PLACED A MONUMENT BOX. THE MAPLE TREE NORTHWEST AND THE ASH (FOUND TO BE A WALNUT) WERE THE ONLY REMAINING LESTER WITNESSES. TRAVERSE FOUND THIS CORNER TO BE 2.89 FEET NORTH OF A DIRECT LINE BETWEEN EAST & WEST 1/4 CORNERS AND 6.41 FEET WEST OF A DIRECT LINE BETWEEN THE NORTH & SOUTH 1/4 CORNERS. SET A STANDARD INGHAM COUNTY DISK ON TOP OF CONCRETE MONUMENT. MEASURED NORTH, 2633.95 FEET TO K-3; EAST, 2655.10 FEET TO M-4; SOUTH, 2652.63 FEET TO L-5 AND WEST, 2661.38 FEET TO K-4.

C. Description of monument for corner and accessories established to perpetuate locating the position of the corner:

30" BY 4" DIAMETER CONCRETE MONUMENT WITH AN ALUMINUM DISK STAMPED P.A. 345, P.S. NO. 18994 IN A MONUMENT BOX 1 FOOT WEST CENTERLINE DIAMOND ROAD.

FOUND ACCOLADE NAIL & TAG (18994) SOUTH/SIDE 8" SQUARE ANCHOR POST, WEST, 32.16 FEET

SET NAIL & TAG 18994 WEST/SIDE POWER POLE, N23°E, 220.81 FEET

SET NAIL & TAG WEST/SIDE 20" WALNUT, S17°E, 77.85 FEET

FOUND KEBS NAIL & TAG EAST/SIDE 26" MAPLE, N10°W, 107.58 FEET

P.A. 345 INGHAM COUNTY
PEER APPROVED 7/29/2005 RW

Signed by

Ron Helsel

Date

7-29-05

Surveyor's Michigan License No.

18994

L-4, T2N, R1W, VEVAY TOWNSHIP CONTINUED

3) P.A. 132 SURVEY LIBER 3, PAGES 1124-1125, JAN. 28, 1980, G. YOUNG P.S. 17640. RECORDED 2634.12 FEET TO L-3 AND 2655.14 FEET TO M-4. CITED THE SAME MONUMENT AND WITNESSES AS ITEM 2 ABOVE.

4) UNRECORDED ACCOLADE SURVEY, DATED MARCH 31, 1995, JOB NO. 95-6574, R. HELSEL P.S. 18994. CORNER NOT IDENTIFIED IN FIELD NOTES, BUT TRAVERSE COMPUTATIONS GIVE THE FOLLOWING DISTANCES: 2661.47 FEET TO K-4 AND 2652.65 FEET TO L-5.



LAND CORNER RECORDATION CERTIFICATE
Filing Requirement of Act 74, Mich. P.A. 1970
VEVAY TOWNSHIP

For corners in

INGHAM

(County)

Located In:

Corner Code #

1. Public Land Survey

T 2N R 1W

M-5

T R

T R

T R

2. Property Controlling
in Section

S T R

S T R

3. Miscellaneous

S T R

Property in Section

S T R

4. Lot No. , Recorded Plat

5. Private Claims

I, RON HELSEL, in A field survey on JULY 13, 2005 do hereby state that under requirements of P.A. 74, Michigan P.A. of 1970, the corner points mentioned in lines 1 and 2 above were in conformance with regulations and rules therefore as required in the current manual of survey instructions of the United States Department of the Interior, Bureau of Land Management or by A decree of A Court of Law and /or that the corner points mentioned in lines 3, 4 and 5 above were in conformance with the rules of the Michigan Board of Land Surveyors or by A Decree of A Court of Law; established, re-established, monumented, recovered, found as expressed below:

NOTE: Not more than 2 corners, all in the same town and range, may be recorded on this certificate.

A. Description of original monument and accessories and/or subsequent restoration:
ORIGINAL MONUMENT: POST SET BY J. WAMPLER, U.S. DEPUTY SURVEYOR, FEB. 7, 1824. ASH 12", S75W, 25 LINKS; ASH 12", N38W, 13 1/2 LINKS.

1) P.A. 74 CORNER, LIBER 6, PAGE 59, MAY 7, 1980, R. LESTER P.S. 18998.

"SET 1/2" BAR & CAP #18998 AT BASE OF FENCE CORNER POST WITH FENCES SOUTH AND WEST. NO OTHER EVIDENCE OF CORNER MONUMENTATION OTHER THAN FENCE CORNER POST. MEASURED NORTH TO M-4, 2658.15'; NORTH TO A-5, 1125.68'. MEASURED SOUTH TO M-6, 2644.54'; SOUTH TO A-6, 1492.69'."

NAIL & TAG, #18998, NORTHEAST SIDE 10" ASH, SOUTHEAST, 2.44'

NAIL & TAG, #18998, IN ROOT OF NORTHEAST SIDE 20" COTTONWOOD, SOUTHWEST, 11.88'

NAIL & TAG, #18998 NORTH SIDE FENCE POST, WEST, 9.39'

NAIL & TAG, #18998, EAST SIDE 4" ELM, NORTH, 12.20'

B. Description of corner evidence found and/or method applied in restoring or reestablishing corner:

FOUND 1/2" IRON BAR ± 12" NNE OF FALLING ROTTED WOOD ANCHOR POST WITH FENCES TO THE WEST AND SOUTH AND A PARTIAL TREE ROW TO THE NORTH. COTTONWOOD AND ASH STILL STANDING. EXCAVATED AND FOUND A CIRCLE OF FIELD STONES. ACCEPTED POSITION OF 1/2" BAR AS A MARKER PERPETUATING THE CORNER. REPLACED BAR WITH STANDARD INGHAM COUNTY MONUMENT.

C. Description of monument for corner and accessories established to perpetuate locating the position of the corner:

3/4" X 24" FORM PIN AND ALUMINUM DISK STAMPED P.A. 345, P.S. NO. 18994

FOUND KEBS (KYES ENG., BRYAN SURVEYING) NAIL & TAG NORTHWEST/SIDE 42" COTTON WOOD, AZ. 224°, 11.98 FEET

SET NAIL & TAG 18994 NORTH/SIDE 16" ASH, AZ. 165°, 2.44 FEET

SET NAIL & TAG 18994 NORTHEAST/SIDE 14" ASH, AZ. 307°, 21.50 FEET

FOUND KEBS NAIL & TAG WEST/SIDE TRIPLE (10"-10"-8") ASH AZ. 16°, 32.93 FEET

Register of Deeds Stamp & File Number

	A	B	C	D	E	F	G	H	I	J	K	L	M
1													
2	6			5		4			3		2		1
3													
4	7			8		9			10		11		12
5													
6	18			17		16			15		14		13
7													
8	19			20		21			22		23		24
9													
10	30			29		28			27		26		25
11													
12	31			32		33			34		35		36
13													

P.A. 345 INGHAM COUNTY
PEER APPROVED 7/26/05 RL

Signed by

Ron Helsel

Date

7-29-05

Surveyor's Michigan License No.

18994



LAND CORNER RECORDATION CERTIFICATE
Filing Requirement of Act 74, Mich. P.A. 1970
VEVAY TOWNSHIP

For corners in

INGHAM

(County)

Located In:

Corner Code #

1. Public Land Survey

T 2N R 1W M-4

2. Property Controlling
in Section

S T R
S T R

3. Miscellaneous

S T R

Property in Section

S T R

4. Lot No. , Recorded Plat

5. Private Claims

I, RON HELSEL, in A field survey on JULY 13, 2005 do hereby state that under requirements of P.A. 74, Michigan P.A. of 1970, the corner points mentioned in lines 1 and 2 above were in conformance with regulations and rules therefore as required in the current manual of survey instructions of the United States Department of the Interior, Bureau of Land Management or by A decree of A Court of Law and /or that the corner points mentioned in lines 3, 4 and 5 above were in conformance with the rules of the Michigan Board of Land Surveyors or by A Decree of A Court of Law; established, re-established, monumented, recovered, found as expressed below:

NOTE: Not more than 2 corners, all in the same town and range, may be recorded on this certificate.

A. Description of original monument and accessories and/or subsequent restoration:
ORIGINAL MONUMENT: POST SET BY J. WAMPLER, U.S. DEPUTY SURVEYOR, FEB. 7, 1824. BEECH 11", N1/2W, 40 1/2 LINKS; BEECH 15", S83W, 11 LINKS.

1) P.A. 74 CORNER, LIBER 1, PAGE 471, APRIL 24, 1972, R. LESTER P.S. 18998.

"SET T-BAR & CAP AT INTERSECTION OF FENCES TO WEST, NORTH, SOUTH AND NW. FIELD MEASUREMENTS NORTH AND SOUTH IN CLOSE ACCORD WITH ORIGINAL GOVERNMENT MEASUREMENT. T-BAR & CAP WEST SIDE OF FENCE CORNER POST." NAIL & TAG SOUTHWEST SIDE OF 12" MAPLE, NORTHWEST, 12.68'; NAIL & TAG EAST SIDE OF 15" MAPLE, SSW, 10.26'

2) P.A. 132 SURVEY, LIBER 1, PAGES 240-241, R. LESTER. RECORDED 5317.84 FEET WEST TO K-4.

CITED SAME MONUMENT AND WITNESSES AS ITEM 1 ABOVE.

3) P.A. 132 SURVEY, LIBER 2, PAGES 1147-1148, JUNE 15, 1977, R. STEADMAN P.S. 11370. RECORDED 2621.15 TO M-3.FD. "T" IRON: 12" BASSWOOD, N30W, 12.68'; 15" BASSWOOD, S40W, 10.26'; 24" OAK, N57W, 43.20'

4) P.A. 132 SURVEY, LIBER 3, PAGES 1124-1125, G. YOUNG P.S. 17640. RECORDED 2620.78 FEET NORTH TO M-3 AND 2655.14 FEET WEST TO L-4. "T-BAR AND CAP, W SIDE OF FENCE COR. POST." WITNESSES SAME AS ITEM 1 ABOVE.

B. Description of corner evidence found and/or method applied in restoring or reestablishing corner:

FOUND "T" BAR AND CAP #17624 (G. LESTER) NORTH SIDE OF A FALLEN WOOD ANCHOR POST. FENCE LINES TO THE WEST AND SOUTH. PARTIAL FENCE TO THE NORTH. EXCAVATED DOWN THRU A CIRCLE OF FIELD STONES AND PIECES OF COILED WIRE. T-BAR WAS POSITIONED IN THE CENTER OF THE STONES. MEASURED WEST, 2655.10 FEET (G. YOUNG 2655.14') SURVEYOR RON LESTER RECORDED 2658.15 FEET TO M-4 AND SURVEYOR YOUNG MEASURED NORTH, 2620.78 FEET TO M-3 ACCEPTED THE POSITION OF THE T BAR AND CIRCLE OF STONES AS THE BEST AVAILABLE EVIDENCE OF THE CORNER AND REPLACED THE BAR WITH A STANDARD INGHAM COUNTY MONUMENT.

C. Description of monument for corner and accessories established to perpetuate locating the position of the corner:

3/4" X 24" FORM PIN AND ALUMINUM DISK STAMPED P.A. 345, P.S. NO. 18994 IN FALLEN NORTH-SOUTH FENCE LINE SOUTH AND WEST OF A 4 FOOT HIGH AND 15 FOOT DIAMETER PILE OF WHISKY BOTTLES.

FOUND NAIL & TAG #17624 (G. LESTER) SOUTH/SIDE 16" BASSWOOD, AZ. 340°, 12.68 FEET

FOUND NAIL & TAG #17624 EAST/SIDE 20" BASSWOOD, AZ. 295°, 10.26 FEET

SET NAIL & TAG 18994 SOUTH/SIDE 10" OAK, AZ. 223°, 22.94 FEET

SET NAIL & TAG 18994 NORTH/SIDE 12" CHERRY, AZ. 254°, 40.03 FEET

SET NAIL & TAG 18994 EAST/SIDE 14" MAPLE, N06°W, 41.80 FEET

P.A. 345 INGHAM COUNTY
PEER APPROVED 7/26/2005 *me*

Signed by

Ron Helsel

Date

7-29-05

Surveyor's Michigan License No.

18994

LAND CORNER RECORDATION CERTIFICATE
Filing Requirement of Act 74, Mich. P.A. 1970
VEVAY TOWNSHIP

For corners in

INGHAM
(County)

Located In:

Corner Code #

1. Public Land Survey

T 2N R 1W

K-3

2005-052920

Pages: 2

B: 12 P: 149

LAND CORNERS

Receipt #2152

Mon Oct 03 10:25:53 EDT 2005

Paula Johnson, Ingham County, Michigan



2. Property Controlling
in Section

S T R
S T R

3. Miscellaneous

S T R

Property in Section

S T R

Register of Deeds Stamp & File Number

4. Lot No. , Recorded Plat

5. Private Claims

I, RON HELSEL, in A field survey on JUNE 7, 2005 do hereby state that under requirements of P.A. 74, Michigan P.A. of 1970, the corner points mentioned in lines 1 and 2 above were in conformance with regulations and rules therefore as required in the current manual of survey instructions of the United States Department of the Interior, Bureau of Land Management or by A decree of A Court of Law and /or that the corner points mentioned in lines 3, 4 and 5 above were in conformance with the rules of the Michigan Board of Land Surveyors or by A Decree of A Court of Law; established, re-established, monumented, recovered, found as expressed below:

NOTE: Not more than 2 corners, all in the same town and range, may be recorded on this certificate.

A. Description of original monument and accessories and/or subsequent restoration:
ORIGINAL MONUMENT: POST SET BY H. PARKE, U.S. DEPUTY SURVEYOR, MARCH, 1826. SUGAR 9", N18 1/2W, 29 LINKS; LYNN 20", S3 1/2E, 29 1/2 LINKS.
RECORDED 40.26 1/2 CHAINS (2657.49') TO L-3.

1) VOL. 3, PAGE 234, JULY 24, 1895, W.A. ROWE, C.S., CALLED FOR STONE & CROCKERY. SUGAR 6", N75W, 119 1/4 LINKS; R. ELM 10", N51 3/4E, 53 1/2 LINKS; BUTTERNUT 4", S63W, 117 LINKS. RECORDED 40.20 CHAINS TO J-3.

(CONTINUED ON BACK SIDE)

B. Description of corner evidence found and/or method applied in restoring or reestablishing corner:
FOUND A 1/2" BY 18 " IRON BAR IN A 4 FOOT CUT AREA TO THE NORTH & EAST, AT 4 FEET SOUTH OF THE INTERSECTION OF COLUMBIA ROAD AND ON CENTERLINE OF EVERY ROAD. EXCAVATED A SIZABLE HOLE LOOKING FOR THE ROWE STONE AND FOUND NOTHING, INDICATING A PREVIOUS CORNER. FOUND A POWER POLE NNW AS THE ONLY REMAINING WITNESS FROM G. LESTER'S WITNESSES. TRAVERSE FOUND THIS CORNER MARKER TO BE 2656.33 FEET SOUTH OF K-2; 2671.45 FEET WEST OF L-3 AND 2646.50 FEET NORTH OF K-4. ACCEPTED THE POSITION OF THE MARKER AS THE PROPER METHOD FOR ESTABLISHING A LOST CORNER AND REPLACED THE IRON BAR WITH A STANDARD INGHAM COUNTY MONUMENT.

C. Description of monument for corner and accessories established to perpetuate locating the position of the corner:
3/4" X 24" FORM PIN AND ALUMINUM DISK STAMPED P.A. 345, P.S. NO. 18994 IN A MONUMENT BOX.
TOP NORTHEAST CORNER OF 2.5' X 1' AMERITECH RISER BOX SET ON CONCRETE SLAB, S50°W, 57.50 FEET
SET NAIL & TAG 18994 NORTHEAST/SIDE POWER POLE, N56°E, 40.32 FEET
SET NAIL & TAG 18994 SOUTHWEST/SIDE 12" MAPLE, N35°W, 54.94 FEET
SET NAIL & TAG SOUTHWEST/SIDE POWER POLE, N24°W, 72.40 FEET
1/2" RE-ROD, N30°W, 58.58 FEET

P.A. 345 INGHAM COUNTY
PEER APPROVED 9/20/2005 m



Signed by Ron Helsel

Date Sept 22, 2005

Surveyor's Michigan License No. 18994

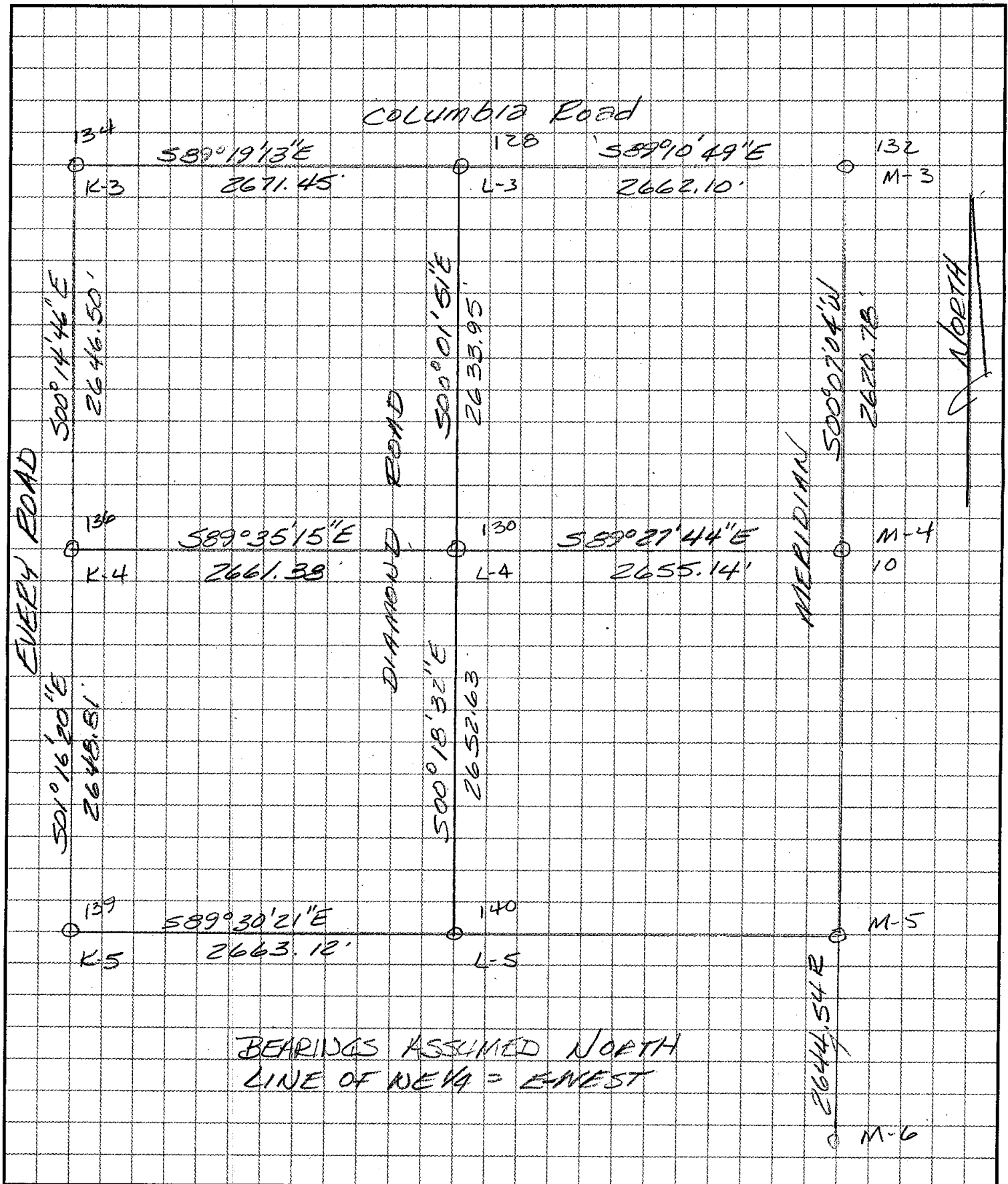
K-3, T2N, R1W, VEVAY TOWNSHIP CONTINUED

- 2) P.A. 74 CORNER, LIBER 1, PAGE 187, OCT. 22, 1971, G. LESTER P.S. 17624. "ESTABLISHED CORNER LOCATION BY PRORATING FIELD MEASUREMENT NORTH, SOUTH, EAST AND WEST IN ACCORD WITH ORIGINAL GOVERNMENT MEASUREMENT. SET 1/2" BAR 4.0' SOUTH AND 2.0' WEST OF INTERSECTION OF EVERY ROAD AND COLUMBIA ROAD.
NAIL & TAG SOUTH SIDE OF POWER POLE, NORTHEAST, 49.47'
NAIL & TAG EAST SIDE OF POWER POLE NNW, 72.14'
NAIL & TAG NORTH SIDE OF 36" MAPLE, WSW, 99.04'
- 3) P.A. 132 SURVEY, LIBER 1, PAGES 93-94, OCT. 22, 1971, G. LESTER. CORNER MONUMENT & WITNESSES SAME AS ITEM 2 ABOVE. RECORDED 2647.63 FEET TO K-4 AND 5304.11 FEET TO I-4.
- 4) PLAT OF COLUMBIA ESTATES, LIBER 31 OF PLATS, PAGES 35-36, FEB. 1, 1973, J. STEPHENS P.S. 16053. (THIS DOCUMENT WAS QUESTIONED BY THE INGHAM COUNTY PEER REVIEW GROUP ON SEPTEMBER 20, 2005. THIS IS AN EXPLANATION WHY THIS DOCUMENT WAS OMITTED FROM THE ORIGINAL OF SEPTEMBER 20, 2005) REVIEW OF THE QUESTIONED PLAT DID NOT REFERENCE TO K-3, NOR DID COLUMBIA ESTATES NO.2 WHICH LIES SOUTH OF THE EAST 1/4 CORNER OF SECTION 11 OF VEVAY TOWNSHIP.
- 5) P.A. 132 SURVEY, LIBER 2, PAGES 851-853, AUG. 17, 1976, J. STEPHENS P.S. 16053. CALLED SAME CORNER MONUMENT AND WITNESSES AS ITEM 2 ABOVE. RECORDED 2653.77 FEET TO J-3 AND 2645.67 FEET TO K-4.
- 6) P.A. 132 SURVEY, LIBER 3, PAGES 899-900, JUNE 21, 1979, G. YOUNG P.S. 17640. CALLED FOR SAME MONUMENT AND WITNESSES AS ITEM 2 ABOVE.
- 7) P.A. 132 SURVEY, LIBER 4, PAGE 415, DEC. 14, 1981, G. YOUNG. CALLED FOR SAME CORNER MONUMENT AND WITNESSES AS ITEM 2 ABOVE.
- 8) P.A. 132 SURVEY, LIBER 6, PAGES 70-72, MAR. 12, 1990, L. BRYAN P.S. 25832. RECORDED 2656.43 FEET TO K-2 AND 2654.32 FEET TO J-3. "FOUND 1/2" BAR IN CENTERLINE OF EVERY ROAD & 4' SOUTH OF CENTERLINE COLUMBIA ROAD."
FOUND NAIL & TAG IN SOUTH SIDE POWER POLE, N60°E, 49.43'
FOUND NAIL & TAG IN EAST SIDE POWER POLE, N20°W, 72.10'
FOUND NAIL & TAG IN NORTH SIDE 36" MAPLE, S80°W, 99.14'
- 9) P.A. 132 SURVEY, LIBER 6, PAGES 314-318, AUG. 6, 1990, D. LOHR P.S. 30090. RECORDED 2654.56 FEET TO J-3 AND 2646.73 FEET TO K-4. "FOUND 1/2" BAR."
NAIL & TAG SOUTH SIDE POWER POLE, N60°E, 49.45'
TOP CENTER UTILITY PEDESTAL, S50°E, 45.70'
NAIL & TAG NORTH SIDE 36" MAPLE, S75°W, 99.04'
NAIL & TAG SOUTHWEST SIDE POWER POLE, N20°W, 72.28'
- 10) P.A. 132 SURVEY, LIBER 6, PAGES 343-345, AUG. 15, 1990, L. BRYAN. "FOUND 1/2" BAR IN CENTERLINE EVERY ROAD & 4' SOUTH CENTERLINE OF COLUMBIA ROAD." WITNESSES SAME AS ITEM 7 ABOVE.

RON HELSEL P.S.

Land Surveying & Related Services
P.O. Box 141, DeWitt, MI 48820
Phone 517-669-3640 Fax 517-669-6521

Client: TNG. CO. RAMON
Description: SEC. 12, DEWAY TWP
Field Crew: RH-DL Date: 2005
Computed: RH
Disk: 64-6 Job: _____



POINT #	NORTH	EAST
1	20000.0000	5000.0000
2	20599.0925	4077.1266
3	20033.7636	8533.2852
4	20018.4207	9397.5149
5	20037.1409	6719.6478
6	17377.5895	9397.5242
7	20018.4220	6720.7788
8	20015.9063	4090.4276
9	17426.8356	6724.0323
10	12129.2083	9383.7876
11	12151.1689	6735.1868
18	20018.4471	6746.9252
99	12154.1415	6735.1716
103	20038.6406	1997.0709
104	18783.7814	4056.2125
105	20015.9788	4037.5434
106	20023.0309	1446.2052
107	17476.0944	4049.8313
126	18468.8034	6740.0356
127	17426.9197	6723.8108
128	14788.0721	6727.3445
129	14777.1350	8371.8381
130	12154.1225	6728.7645
131	14818.7627	5591.8792
132	14749.9827	9389.1758
133	14809.0634	4285.3351
134	14819.7674	4056.0849
135	12589.3955	4052.9439
136	12173.2883	4067.4529
137	11139.7481	4087.1082
138	10404.6724	4063.6443
139	9524.5051	4080.0416
140	9501.5310	6743.0678
141	8814.4082	6734.9368
142	7515.7287	6758.3183
143	7464.1389	7335.8386
144	6601.9274	6736.1548
145	6857.1207	6746.1713
146	5899.8043	6753.6080
147	5049.4362	6730.9451
148	4208.9411	6747.5938

SEC. 12. UEVAY
T2N, R1W

Aug. 2005

R. Helsel

DISK 64-6

N 1/4 COR

COR

NE COR

NW COR

WEST 1/4 COR

SW COR

SOUTH 1/4 COR

T2N RIW VEVAY

found Aug 6/70
Ptd Stone & R.R.
SPIKE
Anchor Post 29.66W
" " 27.14 E
12" woodcut 92.55 NNE

SSW
NW
NE

OE
W

SE - NW
Sec. 13

VEVAY TWP
T2N - R1W

INGHAM TWP
T2N - R1E

Fract. Sec. 18

Curve Data
 $\Delta = 27^\circ 42' L$
 $D = 2^\circ 00'$
 $R = 2864.9'$
 $T = 705.83'$
 $L = 1385.0'$
 $PI = Sta. 14 + 26.70$

App. N & S 1/4 Line

App. E & W 1/4 Line

NW - SE
Sec. 13

App. E 1/8 Line

NE - SE
Sec. 13

Sec. Line
MERIDIAN LINE + 38

DIAMOND RD.
Ex. 66' ROW

50' ROW

50' ROW

50' ROW

50' ROW

50' ROW

50' ROW

50' ROW

50' ROW

50' ROW

50' ROW

50' ROW

50' ROW

R.O.E. Proj. 33-45
No Plans

R.O.E. Proj. 33-45
Sta. 0+00

App. 5 1/8 Line

App. E 1/8 Line

App. E 1/8 Line

App. E 1/8 Line

App. E 1/8 Line

Date	Recorded	Liber-Page
7-8-37	24MR-408	Cor.
9-18-37	25MR-445	"
"	25MR-446	"
10-5-37	25MR-479	"
"	25MR-480	"
12-15-37	25MR-621	"
4-13-38	401-623	"
"	401-625	"
12-15-37	25MR-619	Cor.
11-14-38	27MR-567	"

NE - SW
Sec. 13

SE - SW
Sec. 17

SW - SE
Sec. 13

SW - SE
Sec. 17

SE - SE
Sec. 13

SE - SE
Sec. 17

Curve Data
 $\Delta = 0^\circ 15' R$
 $PI = Sta. 38 + 01.75$

SW - SW
Sec. 18

Date	Recorded	Liber-Page
7-8-37	24MR-408	Cor.
9-18-37	25MR-445	"
"	25MR-446	"
10-5-37	25MR-479	"
"	25MR-480	"
12-15-37	25MR-621	"
4-13-38	401-623	"
"	401-625	"
12-15-37	25MR-619	Cor.
11-14-38	27MR-567	"

Curve Data
 $\Delta = 1^\circ 06' L$
 $D = 0^\circ 10'$
 $R = 3437.00'$
 $T = 330.02'$
 $L = 659.87'$
 $PC = Sta. 105 + 04.26$
 $PI = Sta. 108 + 34.28$
 $PT = Sta. 111 + 64.15$

SW - SW
Sec. 18

App. W 1/8 Line

App. N & S 1/4 Line

App. E 1/8 Line

DEEP CREEK

Sec. Line

PC 105 + 04.26

Ex. 33' ROW

14' ROW