

LAND CORNER RECORDATION CERTIFICATE  
Filing Requirement of Act 74, Mich. P.A. 1970

For corners in  
Wheatfield Township  
INGHAM COUNTY

Located In:

Corner Code #

1. Public Land Survey

T 3N R 1E

M-13

T R

T R

T R

T R

2. Property Controlling  
in Section

S

T R

S

T R

3. Miscellaneous  
Property in Sec.

S

T R

S

T R

B:12 P:322 10/31/06 8:18 AM  
2006-055083 LAND CORNERS Receipt #18776  
Paula Johnson, Ingham County, Michigan

Page: 2



Register of Deeds Stamp & File Number

4. Lot No. , Recorded Plat

5. Private Claims

I, Maurice H. Mahieu, in a field survey on May 3, 2006 do hereby state that under requirements of P.A. 74, Michigan P.A. of 1970, the corner points mentioned in lines 1 and 2 above were in conformance with regulations and rules therefore as required in the current manual of survey instructions of the United States Department of the Interior, Bureau of Land Management or by a decree of a Court of Law and /or that the corner points mentioned in lines 3, 4 and 5 above were in conformance with the rules of the Michigan Board of Land Surveyors or by a Decree of a Court of Law; established, re-established, monumented, recovered, found as expressed below:

NOTE: Not more than 2 corners, all in the same town and range, may be recorded on this certificate.

A. Description of original monument and accessories and/or subsequent restoration:

- Original corner was set by Joseph Wampler, US Deputy Surveyor in 1825. Notes states: Intersect West Boundary 68.77 chains at 8.97 chains North of Temporary Post; Ash 20", S10 1/4 W, 19 lks; Hickory 10", N42W 28 lks.; Marginal note: New: Elm 12" S79 1/2E 165 lks. Feb. 11, 1869.
- County Surveyor TJ Brown in Vol 3, Page 46 on Jan. 22, 1869 and recorded Jan 21, 1870 calls for "Post F.W. Elm 12" S79 1/2E 165 lks. Recorded 48.74 chains (3216.84') to M-2, & 40.43 chains (2668.38') to L-1, Ingham Twp.

(Continued on Back)

B. Description of corner evidence found or method applied in restoring or reestablishing corner:

Found concrete monument in monument box 1.5' east of Meech Road centerline and on the centerline of Howell Road, both paved surfaces. Cap on monument was unreadable. Did not excavate due to work by Ronnie Lester in 1979. Placed a new 2 1/4" aluminum cap stamped "INGHAM COUNTY PA 345 PS 28414" on the found monument. Accepted monument based on extensive excavation and work done in 1979 by Ronnie Lester. Measured 2633.08' to M-12 and 2624.28' to L-13.

C. Description of monument for corner and accessories established to perpetuate locating the position of the corner:

Found concrete monument in monument box and set 2 1/4" aluminum cap stamped "INGHAM COUNTY PA 345, PS 28414" in the approximate intersection of Meech and Howell Roads. Witnessed by:

Found nail and tag #25832 (Larry Bryan) east side 30" Oak S7°W 137.25 feet

Found nail and tag #18998 east side 30" Oak N13°W 133.43 feet

Set nail and tag #28414 north side 42" Oak S86°E 361.15 feet

Set nail and tag #28414 south side 4" Oak N85°E 356.20 feet

Signed by

*Maurice H. Mahieu*  
Maurice H. Mahieu

Date

10-24-06

Surveyor's Michigan License No. 28414



FORM APPROVED BY MICHIGAN STATE BOARD OF PROFESSIONAL  
SURVEYORS, JAN. 28, 1971 REVISED MAY 14, 1975

REVISED JAN., 1983  
REVISED OCT., 1995

P.A. 345 INGHAM COUNTY  
PEER APPROVED 8/29/2006 *PC*

B.(continued) M-13, T3N, R1E, Wheatfield Township, Ingham County, Michigan

3. County Surveyor, TJ Brown on Dec. 17, 1874 in Book 3, Page 18, Ingham County Records states: "A stone Fr. Wh. An elm 12 in diam, bears S79 1/2E 165 lks ". (108.9'). No other information given.
4. County Surveyor John McCreary on Dec. 2, 1899 and subsequent split on April 14, 1922 in Vol 4, Page 32 & 33 notes the following: 1899; Stone, witnesses Sugar 28" N64 1/2E 96 lks. & Elm 30" S79 1/2E 165 lks.  
1911: Long stone, Witnesses:  
Maple Northeast 95 lks  
Elm, Southwest 98 lks  
Cherry, Northwest 82 lks  
Elm, Southeast 165 lks  
Chained South 88.80 (5860.80') to A-3 White Oak Township, T2N, R2E
5. County Surveyor, A.E. Calkins on Feb. 21, 1901 noted the elm described in item A-3 on a grid map from Folder 1, Page of the Ingham County CETA File.
6. Unknown County Surveyor on April 14, 1914 in Book 3, Page 214 describes corner as "stone" witnesses:  
Maple, NE 95 lks (62.70')  
Elm, SW, 98 lks (64.68')  
Cherry, NW 82 lks (54.12')  
Elm, SE, 165 lks (108.90')  
Survey shows a distance South of 88.80 Ch (5960.80') to A-3
7. Ingham County Road Commission Grid map for White Oak Twp. as corner as "Stone" witnessed by  
48" Elm, E. 111.00'  
18" Elm NW 53.95'  
48" Maple, ENE 63.30'  
Tw. 30" Elm, SSW, 65.15'  
10" Elm, SSE, 49.95'
8. Ingham County Road Commission Grid map for Ingham Townsh8ip calls for a 1/2" iron., Witnessed by:  
ENE, 63.19, 36" Oak  
SSE, 68.04', 14" Elm  
SSW, 64.02', 36" Elm  
NNW, 65.34', 14" Elm
9. Two unrecorded Certificate of Surveys by Max F. Rogers in 1966 shows a location of the corner without monumentation or witnesses.
10. An Act 74 LCRC recorded by Ronnie Lester PS 18998 in Liber 5, Page 309 on June 6, 1979 in Part B states:  
Excavated a hole 6' x 10' to an average depth of 2.5' on the centerline of Meech Road and mostly north of the centerline of Howell Road. Found 1/2" iron in monument box +/- 0.5' south of the centerline of Howell Road and on the centerline of Meech Road. Found wooden stake 2.2' below road surface, square rock 2.5' below road surface and 3/4" gas pipe 2.7' below road surface, all in an upright position lying beside each other at the intersection of the centerlines of Meech and Howell Roads. Accepted gas pipe for corner. Measured North +/- 2631' to M-12 and West +/- 2626' to L-13. Excavation conducted by Ingham County Survey and remonumentation project crew.  
Part C. states: SE Corner, Section 36, T3N, R1E. Common corner to T3N, R2E, T2N, R1E and T2N, R2E. Set 4" x 36" concrete monument with 1/2" x 38" rerod and cap #18998 with concrete collar and cover in location of gas pipe described above.  
Witnessed by:  
Nail & Tag 18998 north side 36" Oak ESE 361.37'  
Nail & Tag 18998 west side 12" Ash NE, 139.70'  
Nail & Tag 18998 southeast side 28" Oak NNW, 133.64'  
Nail & Tag 18998 east side 12" Oak SSW, 137.25'
11. An Act 132 survey by Ron Helsel PS 18994 in Liber 8, Page 950 dated Jan. 24, 2002, states "Found Conc. Mon. at C/L - C/L of roads." Witness by:  
Nail & tag #25832 east side 22" Oak NAZ. 195°, 133.33' (distance transposed, found to be 137.33')  
Nail & tag #25832 west side 35" Oak NAZ 353°, 137.20' (distance transposed, found to be 133.33')  
Nail & Tag #25832 est side wood anchor post NAZ. 44°, 44.43'  
Cut "V" top east end of C.M.P. NAZ. 172°, 76.92'  
Measurement of 3159.10 feet to A-2, T2N, R2E
12. An unrecorded Act 132 survey by Jeff Autenrieth PS 31588 while working for KEBS, Inc. dated May 5, 2003 with same information as item A-10. Measurement of 2624.42 feet to L-1, T2N, R1E.
13. An unrecorded Act 132 survey by David J. VanDenBerghe PS 51489 dated Jan. 24, 2006 calls for same monumentation and witnesses as in Item A-10 above. Measurements of 2624.21' to L-13 and 2633.09' to M-12.

# LAND CORNER RECORDATION CERTIFICATE

Filing Requirement of Act 74, Mich. P.A. 1970

For corners in  
**INGHAM**  
(County)

Located In:

Corner Code #

WHITE OAK TOWNSHIP.

1. Public Land Survey

T 2N R 2E

A-2

T R  
T R  
T R  
S T R  
S T R  
S T R

B:12 P:308 10/12/06 8:55 AM  
2008-051942 LAND CORNERS Receipt #17981  
Paula Johnson, Ingham County, Michigan

Page: 2



2. Property Controlling  
in Section

S T R  
S T R

3. Miscellaneous  
Property in Sec.

S T R  
S T R

4. Lot No. Recorded Plat

5. Private Claims

Register of Deeds Stamp & File Number

|    | A  | B  | C  | D  | E  | F  | G | H | I | J | K | L | M |
|----|----|----|----|----|----|----|---|---|---|---|---|---|---|
| 1  |    |    |    |    |    |    |   |   |   |   |   |   |   |
| 2  | 6  | 5  | 4  | 3  | 2  | 1  |   |   |   |   |   |   |   |
| 3  |    |    |    |    |    |    |   |   |   |   |   |   |   |
| 4  | 7  | 8  | 9  | 10 | 11 | 12 |   |   |   |   |   |   |   |
| 5  |    |    |    |    |    |    |   |   |   |   |   |   |   |
| 6  | 18 | 17 | 16 | 15 | 14 | 13 |   |   |   |   |   |   |   |
| 7  |    |    |    |    |    |    |   |   |   |   |   |   |   |
| 8  | 19 | 20 | 21 | 22 | 23 | 24 |   |   |   |   |   |   |   |
| 9  |    |    |    |    |    |    |   |   |   |   |   |   |   |
| 10 | 30 | 29 | 28 | 27 | 26 | 25 |   |   |   |   |   |   |   |
| 11 |    |    |    |    |    |    |   |   |   |   |   |   |   |
| 12 | 31 | 32 | 33 | 34 | 35 | 36 |   |   |   |   |   |   |   |
| 13 |    |    |    |    |    |    |   |   |   |   |   |   |   |

I, **DAVID R. LOHR, P.S.**, in a field survey on **07/21 & 8/30/06**, do hereby certify that under requirements of P.A. 74, Michigan P.A. of 1970, the corner points mentioned in lines 1 and 2 above were in conformance with regulations and rules therefore as required in the current manual of survey instructions of the United States Department of the Interior, Bureau of Land Management or by a decree of a Court of Law and/or that the corner points mentioned in lines 3, 4 and 5 above were in conformance with the rules of the Michigan Board of Land Surveyors or by a Decree of a Court of Law, established, re-established, monumented, re-monumented, recovered, found as expressed below:

**NOTE: Not more than 2 corners, all in the same town and range, may be recorded on this certificate.**

A. Description of original monument and accessories and/or subsequent restoration:

1) CORNER NOT SET IN GLO SURVEY OF NOV. 1825.

2) CORNER REFERENCED IN SURVEY BY T.J. BROWN, DEPUTY COUNTY SURVEYOR, DATED DEC. 17, 1874 AND RECORDED IN BOOK 3, PAGE 18, COUNTY SURVEYORS RECORDS.  
CORNER NOT SHOWN OR WITNESSED. NO DISTANCES TO ADJACENT SECTION CORNERS GIVEN.

3) CORNER NOT REFERENCED IN INGHAM COUNTY ROAD COMMISSION GRID MAP.

CONTINUED ON PAGE 2:

B. Description of corner evidence found and/or method applied in restoring or reestablishing corner:

SEARCHED AT APPARENT LOCATION OF CORNER AND FOUND A HOLE IN C/L OF MEECH ROAD. EXCAVATED THRU 3 LAYERS OF BIT. PAVING TO FIND INTACT CONCRETE COLLAR RING AT 5" DEEP WITH CONCRETE MONUMENT WITH 1/2" BAR & CAP INTACT. RAISED TO GRADE WITH 3 RISER RINGS. ACCEPTED FOUND CONCRETE MON. AS CORNER AND SET A PA 345 CAP #30090 ON TOP OF 1/2" REBAR. CORNER FALLS 18' SOUTH OF CENTERLINE OF DRIVEWAY #251 MEECH ROAD. TRAVERSED SECTION 6, MEASURED NORTH 3159.00' TO A-1, EAST 1912.36' TO B-2 AND SOUTH 2636.43' TO A-3. CORNER FALLS 0.33' EAST OF STANDARD LINE. A BLUNDER OCCURED WHEN THE CONCRETE MONUMENT WAS SET IN 1980. IT WAS INTENDED TO BE SET ON THE STANDARD LINE, HOWEVER IT WAS NOT. RETURNED ON 8/30/06, REMOVED RISER RINGS AND CONCRETE COLLAR, AND SET A STANDARD 3/4" X 24" INGHAM COUNTY BAR & PA 345 CAP #30090, ON THE STANDARD LINE, IN A NEW MONUMENT BOX. LEFT THE CONCRETE MONUMENT IN PLACE IN THE SAME BOX.

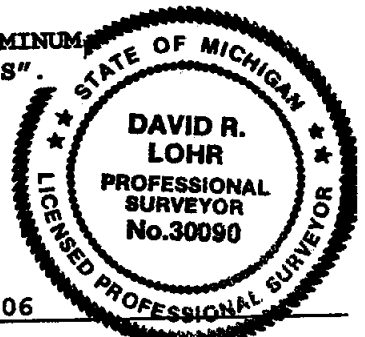
C. Description of monument for corner and accessories established to perpetuate locating the position of the corner:

A-2: T2N, R2E, WHITE OAK TOWNSHIP, INGHAM COUNTY. SET A STANDARD 3/4" X 24" INGHAM COUNTY BAR & PA 345 CAP #30090, ON THE STANDARD LINE, IN A NEW MONUMENT BOX.

WITNESSED BY:

SET MAG NAIL & REMON TAG, NORTHWEST SIDE 20" BUTTERNUT, N 67° E, 34.87'  
SET MAG NAIL & REMON TAG, NORTH SIDE 24" BUTTERNUT, S 62° E, 26.81'  
SET MAG NAIL & REMON TAG, NORTH SIDE 12" WALNUT, S 86° W, 32.62'  
SET MAG NAIL & REMON TAG, EAST SIDE 40" BUTTERNUT, S 35° W, 49.14'  
FD. 1/2" REBAR IN MON BOX, M-2, T2N, R1E, SOUTH, 68.67'

SET MAG NAIL & REMON. TAG IS DEFINED AS A 1/4" X 2-1/2" MAGNETIC ALUMINUM ALLOY NAIL, WITH A 1-1/2" ALUMINUM DISC MARKED "INGHAM PA 345 WITNESS".



Signed by

*David R. Lohr*

Date **SEPTEMBER 26, 2006**

Surveyor's Michigan License No. **30090**

FORM APPROVED BY MICHIGAN STATE BOARD OF LAND SURVEYORS, JAN. 1971  
REVISED MAY 14, 1975  
REVISED JAN. 1983  
REVISED OCT. 1996  
ADAPTED FOR WORD PROCESSING JAN. 1999

P.A. 345 INGHAM COUNTY  
PEER APPROVED **8/29/2006** *ML*

- 4) CORNER REFERENCED IN LCRC BY RONNIE M LESTER, RLS #18998, DATED JULY 7, 1980 AND RECORDED IN LIBER 6, PAGE 94.  
PART A STATES: A-2: NO POST SET IN ORIGINAL GOVERNMENT SURVEY.  
NO RECORD OF SUBSEQUENT MONUMENTATION FOUND.  
PART B STATES: A-2: EXCAVATED A HOLE 10' X 10' TO AN AVERAGE DEPTH OF 4' ON THE CENTERLINE OF MEECH ROAD, 68.5' NORTH OF M-2, INGHAM TWP.  
EXCAVATED A SECOND 10' X 10' HOLE, 35.5' NORTH OF M-2 INGHAM TWP.  
NO EVIDENCE FOUND. CORNER CONSIDERED LOST. CORNER SET ON THE TOWNSHIP LINE IN ACCORD WITH PRORATED MEASUREMENTS FROM A-3, 68.7' NORTH OF M-2, INGHAM, ON THE CENTERLINE OF MEECH ROAD.  
EXCAVATION CONDUCTED BY INGHAM COUNTY SURVEY AND REMONUMENTATION PROJECT CREW.  
PART C STATES: A-2: W 1/4 CORNER, SECTION 6, T2N-R2E. SET 4" X 36" CONCRETE MONUMENT WITH 1/2" X 38" REROD AND CAP #18998 WITH CONCRETE COLLAR AND COVER IN LOCATION DESCRIBED ABOVE. WITNESSED BY:  
NAIL & TAG, #18998, NORTHEAST SIDE 8" ASH, (NO DIRECTION), 59.73'  
NAIL & TAG, #18998, SOUTHEAST SIDE 28" HICKORY, NW, 50.49' (GONE)  
NAIL & TAG, #18998, SOUTH SIDE 8" HICKORY, SSE, 34.19' (GONE)  
NAIL & TAG, #18998, SOUTHWEST 12" HICKORY, SSW, 26.35' (GONE)  
1/2" BAR IN MON. BOX, M-2 INGHAM TWP., SOUTH, 68.62'
- 5) CORNER REFERENCED IN SURVEYSS BY HAROLD J. OLVER, RLS #6354, DATED 06/24/82 AND RECORDED IN LIBER 4, PAGE 568 & 569. "WEST 1/4 CORNER, SEC. 6, T2N, R2E, WHITE OAK TWP., INGHAM CO., MICH. REC. LIBER 6, P.94. 8/26/80. IRON & MON. BOX." NO WITNESSES GIVEN. SURVEY SHOWS A DISTANCE SOUTH TO M-2 OF 68.64'.
- 6) CORNER REFERENCED IN SURVEY BY RON ENGER, RLS #28409, DATED 01/04/96 AND RECORDED IN LIBER 7, PAGE 1035. WEST 1/4 CORNER, SEC. 6, T2N, R2E, A-2, LIBER 6, PAGE 94. "CONCRETE MONUMENT WITH CAP 18998 IN CONCRETE COLLAR: WITNESSED BY:  
NAIL & TAG #18998 IN SE SIDE 28" HICKORY, NW, 50.49'  
NAIL & TAG #18998 IN SOUTH SIDE 8" HICKORY, SSE, 34.19'  
NAIL & TAG #18998 IN SW SIDE 12" HICKORY, SSW, 26.35'  
1/2" BAR IN MONUMENT BOX, SOUTH, 68.62'  
SURVEY SHOWS A DISTANCE SOUTH TO M-2 OF 68.62' AND SOUTH TO A-3 OF 2636.33'.
- 7) CORNER REFERENCED IN SURVEY BY RON HELSEL, RPS #18994, DATED 11/24/01 AND RECORDED IN LIBER 8, PAGE 950. "WEST 1/4 CORNER, SECTION 6, (LIBER 6, PAGE 94 OF CORNERS) CONC. MON. AND CAP IN CENTERLINE OF MEECH ROAD." WITNESSED BY:  
SOUTH, 68.62 FEET, 1/2" BAR IN MON. BOX, (M-2 OF T2N, R1E)  
NAIL & TAG #18994, NORTH/SIDE 8" ASH, NAZ. 266°, 33.00 FEET  
NAIL & TAG #18994, EAST/SIDE 40" OAK, NAZ. 214°, 49.33 FEET  
NAIL & TAG #18994, NORTH/SIDE 22" ASH, NAZ. 109°, 26.47 FEET  
NAIL & TAG #18994, EAST/SIDE 12" ASH, NAZ. 336°, 50.74 FEET  
SURVEY SHOWS A DISTANCE NORTH TO A-1 OF 3159.10 AND EAST TO B-2 OF 1912.36'.
- 8) NO OTHER REFERENCES FOUND.

LAND CORNER RECORDATION CERTIFICATE  
Filing Requirement of Act 74, Mich. P.A. 1970

For corners in  
INGHAM  
(County)

Located In:

Corner Code #

WHITE OAK TOWNSHIP.

1. Public Land Survey

T 2N R 2E  
T R  
T R  
T R  
S T R  
S T R  
S T R  
S T R

A-3

B:12 P:309 10/12/06 8:55 AM  
2006-051943 LAND CORNERS Receipt #17981  
Paula Johnson, Ingham County, Michigan

Page: 2



2. Property Controlling  
in Section  
3. Miscellaneous  
Property in Sec.  
4. Lot No. \_\_\_\_\_, Recorded Plat  
5. Private Claims

Register of Deeds Stamp & File Number

|    | A  | B  | C  | D  | E  | F  | G | H | I | J | K | L | M |
|----|----|----|----|----|----|----|---|---|---|---|---|---|---|
| 1  |    |    |    |    |    |    |   |   |   |   |   |   |   |
| 2  | 6  | 5  | 4  | 3  | 2  | 1  |   |   |   |   |   |   |   |
| 3  |    |    |    |    |    |    |   |   |   |   |   |   |   |
| 4  | 7  | 8  | 9  | 10 | 11 | 12 |   |   |   |   |   |   |   |
| 5  |    |    |    |    |    |    |   |   |   |   |   |   |   |
| 6  | 18 | 17 | 16 | 15 | 14 | 13 |   |   |   |   |   |   |   |
| 7  |    |    |    |    |    |    |   |   |   |   |   |   |   |
| 8  | 19 | 20 | 21 | 22 | 23 | 24 |   |   |   |   |   |   |   |
| 9  |    |    |    |    |    |    |   |   |   |   |   |   |   |
| 10 | 30 | 29 | 28 | 27 | 26 | 25 |   |   |   |   |   |   |   |
| 11 |    |    |    |    |    |    |   |   |   |   |   |   |   |
| 12 | 31 | 32 | 33 | 34 | 35 | 36 |   |   |   |   |   |   |   |
| 13 |    |    |    |    |    |    |   |   |   |   |   |   |   |

I, DAVID R. LOHR, P.S., in a field survey on 07/21 & 08/30/06, do hereby certify that under requirements of P.A. 74, Michigan P.A. of 1970, the corner points mentioned in lines 1 and 2 above were in conformance with regulations and rules therefore as required in the current manual of survey instructions of the United States Department of the Interior, Bureau of Land Management or by a decree of a Court of Law and/or that the corner points mentioned in lines 3, 4 and 5 above were in conformance with the rules of the Michigan Board of Land Surveyors or by a Decree of a Court of Law; established, re-established, monumented, re-monumented, recovered, found as expressed below:

NOTE: Not more than 2 corners, all in the same town and range, may be recorded on this certificate.

A. Description of original monument and accessories and/or subsequent restoration:

- 1) CORNER SET BY JOSEPH WAMPLER, DEP. SURVEYOR, NOV. 1825. "W. BTW. 6 & 7, 69.28 CH. (4572.48') INT. W. BR. 104 LKS. (68.64') N. OF P. SET POST BTW. 6 & 7, FW." WITNESSED BY:  
ASH 12", S 42-1/2 E, 13 LKS. ( 8.58')  
LN 24", N 23 E, 37 LKS. ( 24.42')

- GLO NOTES SHOW A DISTANCE EAST OF 29.28 CH. (1932.48')  
2) CORNER REFERENCED IN SURVEY BY T.J. BROWN, DEP. CO. SURVEYOR, DATED DEC. 30, 1869 AND RECORDED IN BOOK 3, PAGE 11, COUNTY SURVEYORS RECORDS. "LOCATED THE CORNER A POST FROM WHICH A APPLE 2 INCHES IN DIAMETER BEARS N 71 3/4 E, 191 LKS. (126.06') NEW A SUGAR 8 INCHES IN DIAMETER BEARS S 40-3/4 W, 67-1/2 LKS. (44.55') NEW SURVEY SHOWS A DISTANCE EAST OF 29.59 CH. (1952.28')  
3) CORNER REFERENCED IN SURVEY BY R. J. ROBB, COUNTY SURVEYOR, DATED APRIL 14, 1911 AND RECORDED IN BOOK 3, PAGE 214, COUNTY SURVEYORS RECORDS. "CHAINED SOUTH (FROM A-1), AT 88.80 CH. (5860.80') FOUND SW COR., A STONE FW. MAPLE (NO SIZE GIVEN) N-E, 59-1/2 LKS. (39.27')

CONTINUED ON PAGE 2:

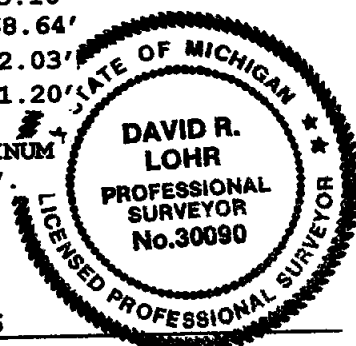
B. Description of corner evidence found and/or method applied in restoring or reestablishing corner:

SEARCHED AT APPARENT LOCATION OF CORNER AND FOUND 1/2" X 16" REBAR IN HOLE IN BIT, 2' EAST OF CENTERLINE OF MEECH ROAD AND ON CENTERLINE OF COLUMBIA ROAD EAST, 68.64' NORTH OF M-3, T2N, R1E. FOUND SURVEYOR STEADMAN'S WITNESS ASH TO THE NORTHWEST, HIS OTHER WITNESSES ARE GONE. EXCAVATED TO FIND REBAR IN A BURIED MONUMENT BOX AT 4" DEEP. REBAR WAS SET OVER STEADMAN'S PIPE & CAP #11370 AT DEPTH OF 16". ACCEPTED FOUND PIPE & CAP #11370 AS CORNER PER ITEM A-4 ABOVE AND SET A STANDARD INGHAM COUNTY BAR & PA 345 CAP #30090, OVER THE FOUND PIPE. RAISED BOX TO GRADE WITH 2 RISER RINGS. MEASURED NORTH 2636.43' TO A-2, EAST 1957.27' TO B-3 AND SOUTH 2620.15' TO A-4.

C. Description of monument for corner and accessories established to perpetuate locating the position of the corner:

A-3: T2N, R2E, WHITE OAK TOWNSHIP, INGHAM COUNTY. SET A STANDARD INGHAM COUNTY BAR & PA 345 CAP #30090 AT FOUND PIPE & CAP #11370, IN A MONUMENT BOX. WITNESSED BY:  
SET MAG NAIL & REMON TAG, EAST SIDE 24" ASH, N 24° W, 66.54'  
FOUND NAIL & TAG #25832 (L.BRYAN), NORTHEAST SIDE 22" ASH, N 36° W, 51.06'  
SET MAG NAIL & REMON TAG, WEST SIDE 36" ASH, S 15° E, 65.10'  
FOUND BAR & PA 345 CAP #47969 (W. PARSONS), M-3, T2N-R1E, SOUTH, 68.64'  
FOUND NAIL & TAG #13039 (A. PIERSON), TOP GUARD POST, S 27° W, 52.03'  
FOUND NAIL & TAG #25832 (L.BRYAN), TOP GUARD POST, S 53° W, 21.20'

SET MAG NAIL & REMON. TAG IS DEFINED AS A 1/4" X 2-1/2" MAGNETIC ALUMINUM ALLOY NAIL, WITH A 1-1/2" ALUMINUM DISC MARKED "INGHAM PA 345 WITNESS".



Signed by

*David R. Lohr*

Date

OCTOBER 4, 2006

Surveyor's Michigan License No.

30090

FORM APPROVED BY MICHIGAN STATE BOARD OF LAND SURVEYORS, JAN. 1971  
REVISED MAY 14, 1975  
REVISED JAN. 1983  
REVISED OCT. 1986  
ADAPTED FOR WORD PROCESSING JAN. 1999

P.A. 345 INGHAM COUNTY  
PEER APPROVED 9/24/2006 m

- 4) CORNER REFERENCED IN LCRC BY RICHARD W. STEADMAN, RLS #11370, DATED APRIL 10, 1974 AND RECORDED IN LIBER 5, PAGE 96.

PART A STATES: SAME DATA AS IN ITEMS A, 2 & 3 ABOVE.

PART B STATES: AT MEASUREMENT FROM ROBBS BEARING TREE, DUG HOLE IN INTERSECTION OF COLUMBIA AND MEECH ROADS. ABOUT 4 FT. BELOW THE SURFACE, FOUND STONE WITH BROKEN CROCKERY AROUND IT.

PART C STATES: RAISED LOCATION OF STONE TO SURFACE WITH 3/4" IRON PIPE AND MONUMENT BOX. WITNESSED BY:

|                        |         |        |
|------------------------|---------|--------|
| 36" MAPLE (ROBB B.T.), | N.E.,   | 39.89' |
| 10" MAPLE,             | E.N.E., | 74.11' |
| 14" ASH,               | W.N.W., | 50.88' |

- 5) CORNER REFERENCED IN SURVEYS BY HAROLD J. OLVER, RLS #6354, DATED 06/24/82 AND RECORDED IN LIBER 4, PAGES 568 & 569. "SW COR. SEC 6, T2N, R2E, WHITE OAK TWP., INGHAM CO., MICH. REC. LIBER 5, P.96, 11/22/78." NO WITNESSES GIVEN. SURVEY SHOWS A DISTANCE NORTH OF 2636.4' TO A-2, SOUTH OF 68.64' TO M-3 AND EAST OF 1958.06' TO B-3.

- 6) CORNER REFERENCED IN SURVEY BY RONALD L. ENGER, LLS #28409, DATED 01/04/96 AND RECORDED IN LIBER 7, PAGE 1035. "A-3, T2N, R2E, SW CORNER, SECTION 6, WHITE OAK TWP. RECORDED LIBER 5, PG. 96, 1/2" BAR IN 3/4" PIPE IN MON. BOX." WITNESSED BY:

|                    |         |        |
|--------------------|---------|--------|
| 36" MAPLE (STUMP), | N.E.,   | 39.89' |
| 10" MAPLE,         | E.N.E., | 74.11' |
| 14" ASH,           | W.N.W., | 50.88' |

3/4" PIPE IN MON. BOX, (M-3 T2N, R1E), SOUTH, 68.64'

SURVEY SHOWS A DISTANCE NORTH OF 2636.33' TO A-2 AND EAST OF 1955.67' TO B-3.

- 7) CORNER REFERENCED IN SURVEY BY RON HELSEL, RLS #18994, DATED 11/24/01 AND RECORDED IN LIBER 8, PAGE 950. "SOUTHWEST CORNER, SECTION 6, T2N, R2E." NO MENTION OF MONUMENT OR WITNESSES GIVEN. SURVEY SHOWS A DISTANCE EAST OF 1957.27' TO B-3, SOUTH OF 68.64' TO M-3 AND NORTH OF 2636.43' TO A-2.

- 8) NO OTHER REFERENCES FOUND.

LAND CORNER RECORDATION CERTIFICATE  
Filing Requirement of Act 74, Mich. P.A. 1970

For corners in  
INGHAM  
(County)

Located In:

Corner Code #

WHITE OAK TOWNSHIP.

1. Public Land Survey

T 2N R 2E

B-1

T R

T R

T R

T R

T R

T R

T R

T R

T R

T R

T R

T R

T R

T R

T R

T R

T R

T R

T R

T R

T R

T R

T R

T R

T R

T R

T R

T R

T R

T R

T R

T R

T R

T R

T R

T R

T R

T R

T R

T R

T R

T R

T R

T R

T R

T R

T R

T R

T R

T R

T R

T R

T R

T R

T R

T R

T R

T R

T R

T R

T R

T R

T R

T R

T R

T R

T R

T R

T R

T R

T R

T R

T R

T R

T R

T R

B:12 P:311 10/12/06 8:55 AM  
2006-051945 LAND CORNERS Receipt #17981  
Paula Johnson, Ingham County, Michigan

Page: 2



Register of Deeds Stamp & File Number

|    | A  | B  | C  | D  | E  | F  | G | H | I | J | K | L | M |
|----|----|----|----|----|----|----|---|---|---|---|---|---|---|
| 1  |    |    |    |    |    |    |   |   |   |   |   |   |   |
| 2  | 6  | 5  | 4  | 3  | 2  | 1  |   |   |   |   |   |   |   |
| 3  |    |    |    |    |    |    |   |   |   |   |   |   |   |
| 4  | 7  | 8  | 9  | 10 | 11 | 12 |   |   |   |   |   |   |   |
| 5  |    |    |    |    |    |    |   |   |   |   |   |   |   |
| 6  | 18 | 17 | 16 | 15 | 14 | 13 |   |   |   |   |   |   |   |
| 7  |    |    |    |    |    |    |   |   |   |   |   |   |   |
| 8  | 19 | 20 | 21 | 22 | 23 | 24 |   |   |   |   |   |   |   |
| 9  |    |    |    |    |    |    |   |   |   |   |   |   |   |
| 10 | 30 | 29 | 28 | 27 | 26 | 25 |   |   |   |   |   |   |   |
| 11 |    |    |    |    |    |    |   |   |   |   |   |   |   |
| 12 | 31 | 32 | 33 | 34 | 35 | 36 |   |   |   |   |   |   |   |
| 13 |    |    |    |    |    |    |   |   |   |   |   |   |   |

I, DAVID R. LOHR, P.S., in a field survey on 07/21/06, do hereby certify that under requirements of P.A. 74, Michigan P.A. of 1970, the corner points mentioned in lines 1 and 2 above were in conformance with regulations and rules therefore as required in the current manual of survey instructions of the United States Department of the Interior, Bureau of Land Management or by a decree of a Court of Law and/or that the corner points mentioned in lines 3, 4 and 5 above were in conformance with the rules of the Michigan Board of Land Surveyors or by a Decree of a Court of Law; established, re-established, monumented, re-monumented, recovered, found as expressed below:

NOTE: Not more than 2 corners, all in the same town and range, may be recorded on this certificate.

A. Description of original monument and accessories and/or subsequent restoration:

1) CORNER NOT SET IN GLO SURVEY OF 1825.

2) CORNER REFERENCED IN SURVEY BY T.J. BROWN, DEP. CO. SURVEYOR, DATED DEC. 17, 1874 AND RECORDED IN BOOK 3, PAGE 18, COUNTY SURVEYORS RECORDS. CORNER SHOWN AS "A STONE, NO TREES." AT THE INTERSECTION OF THE "INTERIOR POST LINE" (NORTH & SOUTH) AND THE NORTH SECTION LINE. NO DISTANCES TO ADJACENT SECTION CORNERS GIVEN.

3) CORNER REFERENCED IN SURVEY BY JOHN McCREARY, COUNTY SURVEYOR, DATED DEC. 2, 1899 AND RECORDED IN BOOK 3, PAGE 214, COUNTY SURVEYORS RECORDS. "STONE, NO TREE." NO WITNESSES OR DISTANCES GTO ADJACENT SECTION CORNERS GIVEN.

4) CORNER REFERENCED IN SURVEY BY R. J. ROBB, COUNTY SURVEYOR, DATED APRIL 14, 1911 AND RECORDED IN BOOK 3, PAGE 214, COUNTY SURVEYORS RECORDS. "ALSO FOUND THE S 1/4 POST AND CHAINED NORTH TO N 1/4 POST." (NO MENTION OF MONUMENT, WITNESSES OR DISTANCES GIVEN).

CONTINUED ON PAGE 2:

B. Description of corner evidence found and/or method applied in restoring or reestablishing corner:

SEARCHED AT APPARENT LOCATION OF CORNER AND FOUND CONCRETE MONUMENT WITH REBAR AND CAP #18998 IN MONUMENT BOX ON CENTERLINE OF HOWELL ROAD AND 16.50' EAST OF B-13, T3N, R2E. ALL IN EXCELLENT CONDITION. NO OCCUPATION TO THE SOUTH. ACCEPTED FOUND CONCRETE MONUMENT WITH CAP AS CORNER AND SET A STANDARD INGHAM COUNTY PA 345 CAP #30090, IN FOUND POSITION. MEASURED EAST 2651.71' TO C-1, WEST 1866.08' TO A-1 AND SOUTH 3136.23' TO B-2.

C. Description of monument for corner and accessories established to perpetuate locating the position of the corner:

B-1: T2N, R2E, WHITE OAK TOWNSHIP, INGHAM COUNTY. SET A STANDARD INGHAM COUNTY PA 345 CAP #30090 ON FOUND CONCRETE MONUMENT. WITNESSED BY:

FOUND NAIL & TAG #25832 (L.BRYAN), EAST SIDE 48" OAK, N 25° W, 40.10'  
SET 1/2" BAR & CAP #30090, 17.5' NORTH OF CENTERLINE, N 45° E, 22.58'  
SET 1/2" BAR & CAP #30090, 17.5' SOUTH OF CENTERLINE, S 45° E, 27.26'  
FOUND 1/2" REBAR, 20' SOUTH OF CENTERLINE, S 40° W, 25.29'  
FOUND CONC. MONUMENT/PA 345 CAP IN MONUMENT BOX, B-13, DUE WEST, 16.50'



Signed by

*David R. Lohr*

Date

OCTOBER 4, 2006

Surveyor's Michigan License No.

30090

FORM APPROVED BY MICHIGAN STATE BOARD OF LAND SURVEYORS, JAN. 1971  
REVISED MAY 14, 1976  
REVISED JAN., 1983  
REVISED OCT., 1988  
ADAPTED FOR WORD PROCESSING JAN., 1989

P.A. 345 INGHAM COUNTY  
PEER APPROVED 8/29/2006 *M*

- 5) CORNER REFERENCED IN LCRC BY RONNIE M. LESTER, RLS #18998, DATED APRIL 30, 1981 AND RECORDED IN LIBER 6, PAGE 190.

PART A STATES: B-1: SAME DATA AS IN ITEMS A-1 THRU A-4 ABOVE.

PART B STATES: B-1: EXCAVATED A 10' X 10' (HOLE) TO A DEPTH OF 3.5'. NO PHYSICAL EVIDENCE OF CORNER WAS FOUND. CORNER DETERMINED TO BE LOST. CORNER SET 16.5' EAST OF B-13 ON TOWNSHIP LINE. TOTAL EAST-WEST MEASURED DISTANCE BETWEEN A-13 AND C-13 SHOW +/- 50' DISCREPANCY IN COMPARISON TO GLO. B-1 WAS SET USING THE FALLING AT C-1 RATHER THAN PROPORTIONATE MIS-RECORDED DISTANCE. MEASURED WEST TO A-13, 1865.86 FEET. MEASURED EAST 2650.96' TO C-1. EXCAVATION CONDUCTED BY INGHAM COUNTY SURVEY AND REMONUMENTATION PROJECT CREW."

PART C STATES: B-1: NORTH 1/4 CORNER, SECTION 6, T2N, R2E. SET 4" X 36" CONCRETE MONUMENT WITH 1/2" X 38" REROD AND CAP #18998 IN LOCATION DESCRIBED ABOVE." WITNESSED BY:

|   |                 |
|---|-----------------|
| NAIL & TAG #18998, SOUTH SIDE FENCE POST,       | N 50° W, 76.26' |
| NAIL & TAG #18998, SOUTHWEST SIDE 40" ASH,      | N 30° W, 40.73' |
| NAIL & TAG #18998, EAST SIDE FENCE POST,        | N 25° W, 43.99' |
| NAIL & TAG #18998, EAST SIDE FENCE CORNER POST, | N 20° W, 36.44' |

- 6) CORNER REFERENCED IN SURVEY BY RON HELSEL, RLS #18994, DATED 11/24/01 AND RECORDED IN LIBER 8, PAGE 950. "NORTH 1/4 CORNER, SECTION 6, (LIBER 6, PAGE 190 OF CORNERS) CONC. MON. IN MON. BOX ON CENTERLINE OF HOWELL ROAD." WITNESSED BY:

WEST, 16.50 FEET, CONC. MON. IN MON. BOX, (B-13 OF LEROY TWPNSHIP, T3N, R2E)

KEBS BAR & CAP, NAZ. 337°, 37.70' FEET

1/2" BAR & CAP, NAZ. 43°, 28.35 FEET,

1/2" BAR & CAP, NAZ. 220°, 25.29 FEET,

SURVEY SHOWS A DISTANCE SOUTH OF 3136.23' TO B-3. TRAVERSE NOTES AND COMPUTATION SHEET SHOW A DISTANCE WEST OF 1866.08' TO A-1.

- 7) NO OTHER REFERENCES FOUND.



# LAND CORNER RECORDATION CERTIFICATE

Filing Requirement of Act 74, Mich. P.A. 1970

For corners in  
INGHAM

(County)

Located In:

Corner Code #

WHITE OAK TOWNSHIP.

1. Public Land Survey

T 2N R 2E

B-2

T R

T R

T R

S T R

S T R

S T R

S T R

S T R

S T R

S T R

S T R

S T R

S T R

S T R

S T R

S T R

S T R

S T R

S T R

S T R

S T R

S T R

S T R

S T R

S T R

S T R

S T R

S T R

S T R

S T R

S T R

S T R

S T R

S T R

S T R

S T R

S T R

S T R

S T R

S T R

S T R

S T R

S T R

S T R

S T R

S T R

S T R

S T R

S T R

S T R

S T R

S T R

S T R

S T R

S T R

S T R

S T R

S T R

S T R

S T R

S T R

S T R

S T R

S T R

S T R

S T R

S T R

S T R

S T R

S T R

S T R

S T R

S T R

S T R

S T R

S T R

B:12 P:312 10/12/06 8:55 AM  
2006-051948 LAND CORNERS Receipt #17981  
Paula Johnson, Ingham County, Michigan

Page: 2



Register of Deeds Stamp & File Number

|    | A  | B  | C  | D  | E  | F  | G | H | I | J | K | L | M |
|----|----|----|----|----|----|----|---|---|---|---|---|---|---|
| 1  |    |    |    |    |    |    |   |   |   |   |   |   |   |
| 2  | 6  | 5  | 4  | 3  | 2  | 1  |   |   |   |   |   |   |   |
| 3  |    |    |    |    |    |    |   |   |   |   |   |   |   |
| 4  | 7  | 8  | 9  | 10 | 11 | 12 |   |   |   |   |   |   |   |
| 5  |    |    |    |    |    |    |   |   |   |   |   |   |   |
| 6  | 18 | 17 | 16 | 15 | 14 | 13 |   |   |   |   |   |   |   |
| 7  |    |    |    |    |    |    |   |   |   |   |   |   |   |
| 8  | 19 | 20 | 21 | 22 | 23 | 24 |   |   |   |   |   |   |   |
| 9  |    |    |    |    |    |    |   |   |   |   |   |   |   |
| 10 | 30 | 29 | 28 | 27 | 26 | 25 |   |   |   |   |   |   |   |
| 11 |    |    |    |    |    |    |   |   |   |   |   |   |   |
| 12 | 31 | 32 | 33 | 34 | 35 | 36 |   |   |   |   |   |   |   |
| 13 |    |    |    |    |    |    |   |   |   |   |   |   |   |

I, DAVID R. LOHR, P.S., in a field survey on 08/24/06, do hereby certify that under requirements of P.A. 74, Michigan P.A. of 1970, the corner points mentioned in lines 1 and 2 above were in conformance with regulations and rules therefore as required in the current manual of survey instructions of the United States Department of the Interior, Bureau of Land Management or by a decree of a Court of Law and/or that the corner points mentioned in lines 3, 4 and 5 above were in conformance with the rules of the Michigan Board of Land Surveyors or by a Decree of a Court of Law; established, re-established, monumented, re-monumented, recovered, found as expressed below:

NOTE: Not more than 2 corners, all in the same town and range, may be recorded on this certificate.

A. Description of original monument and accessories and/or subsequent restoration:

1) CORNER NOT SET IN GLO SURVEY OF 1825.

2) CORNER REFERENCED IN SURVEY BY T.J. BROWN, DEP. CO. SURVEYOR, DATED DEC. 17, 1874 AND RECORDED IN BOOK 3, PAGE 18, COUNTY SURVEYORS RECORDS. CORNER SHOWN AS "A POST, NO TREES." AT THE INTERSECTION OF THE "INTERIOR POST LINE" (NORTH & SOUTH) AND THE "QUARTER POST LINE" (EAST-WEST). NO DISTANCES TO ADJACENT SECTION CORNERS GIVEN.

CONTINUED ON PAGE 2:

B. Description of corner evidence found and/or method applied in restoring or reestablishing corner:

SEARCHED AT APPARENT LOCATION OF CORNER AND FOUND SURVEYOR HELSEL'S 1/2" X 18" REBAR, 11' EAST OF A NORTH-SOUTH FENCELINE, WHICH HE SET AT THE INTERSECTION OF THE QUARTER LINES. FOUND HELSEL'S WITNESS TAGS TO NORTH & SOUTHEAST LYING ON THE GROUND. ACCEPTED FOUND REBAR AS CORNER AND SET A STANDARD INGHAM COUNTY BAR & PA 345 CAP #30090, IN FOUND POSITION. HELSEL'S SURVEY SHOWS A DISTANCE NORTH OF 3136.23' TO B-2, SOUTH OF 3046.91' TO B-3 AND WEST OF 1912.36' TO A-2. HIS TRAVERSE NOTES & COMPUTATION SHEET SHOWS A DISTANCE EAST OF 2653.67' TO C-2.

C. Description of monument for corner and accessories established to perpetuate locating the position of the corner:

B-2: T2N, R2E, WHITE OAK TOWNSHIP, INGHAM COUNTY. SET A STANDARD INGHAM COUNTY BAR & PA 345 CAP #30090 AT FOUND REBAR. WITNESSED BY:

SET MAG NAIL & REMON TAG, EAST SIDE 20" BEECH, N 03° E, 22.33'  
SET MAG NAIL & REMON TAG, NORTH SIDE 24" BEECH, N 80° E, 29.63'  
SET MAG NAIL & REMON TAG, WEST SIDE 14" BEECH, S 25° E, 20.00'  
FOUND NAIL & TAG #18994, WEST SIDE 10" BEECH, S 31° W, 12.29'  
SET MAG NAIL & REMON TAG, SOUTH SIDE 6" BEECH, S 79° W, 11.33'

SET MAG NAIL & REMON. TAG IS DEFINED AS A 1/4" X 2-1/2" MAGNETIC ALUMINUM ALLOY NAIL, WITH A 1-1/2" ALUMINUM DISC MARKED "INGHAM PA 345 WITNESS".



Signed by

*David R. Lohr*

Date

SEPTEMBER 26, 2006

Surveyor's Michigan License No.

30090

FORM APPROVED BY MICHIGAN STATE BOARD OF LAND SURVEYORS, JAN. 1971  
REVISED MAY 14, 1975  
REVISED JAN., 1983  
REVISED OCT, 1986  
ADAPTED FOR WORD PROCESSING JAN, 1999

P.A. 345 INGHAM COUNTY  
PEER APPROVED 8/29/2006 M

- 3) CORNER REFERENCED IN LCRC BY RON HELSEL, RLS #18994, DATED NOV. 13, 2001 AND RECORDED IN LIBER 10, PAGE 196.

PART A STATES: B-2: SAME DATA AS IN ITEMS A & 2 ABOVE.

PART B STATES: B-2: SET 1/2" IRON BAR AND CAP AT THE INTERSECTION OF THE NORTH-SOUTH AND EAST-WEST 1/4 LINES. DID NOT FIND ANY EVIDENCE OF A PREVIOUS CORNER. CORNER IS 11 FEET +/- EAST OF A NEWER MEANDERING NORTH-SOUTH FENCELINE.

PART C STATES: B-2: 1/2" IRON BAR AND CAP #18994 11 FEET EAST OF NORTH-SOUTH FENCELINE MARKED WITH 5' STEEL POST." WITNESSED BY:

SET NAIL & TAG #18994, NORTH/SIDE 24" BEECH, NAZ. 83°, 28.60'

SET NAIL & TAG #18994, EAST/SIDE 18" BEECH, NAZ. 01°, 22.56'

SET NAIL & TAG #18994, WEST/SIDE 16" BEECH, NAZ. 163°, 19.84'

SET NAIL & TAG #18994, WEST/SIDE 12" BEECH, NAZ. 214°, 12.29'

- 4) CORNER REFERENCED IN SURVEY BY RON HELSEL, RLS #18994, DATED 11/24/01 AND RECORDED IN LIBER 8, PAGE 950. "CENTER OF SECTION 6, T2N, R2E, SET 1/2" IRON BAR AT THE INTERSECTION OF NORTH-SOUTH AND EAST-WEST 1/4 LINES, 11 FEET MORE OR LESS EAST OF NORTH-SOUTH FENCELINE. SAME WITNESSES AS IN ITEM A-3 ABOVE. SURVEY SHOWS A DISTANCE NORTH OF 3136.23' TO B-2, SOUTH OF 3046.91' TO B-3 AND WEST OF 1912.36' TO A-2. TRAVERSE NOTES & COMPUTATION SHEET SHOWS A DISTANCE EAST OF 2653.67' TO C-2.

- 5) NO OTHER REFERENCES FOUND.

# LAND CORNER RECORDATION CERTIFICATE

Filing Requirement of Act 74, Mich. P.A. 1970

For corners in

INGHAM

(County)

Located In:

Corner Code #

WHITE OAK TOWNSHIP.

1. Public Land Survey

T 2N R 2E

B-3

T R

T R

T R

S T R

S T R

S T R

S T R

S T R

S T R

S T R

S T R

S T R

S T R

S T R

S T R

S T R

S T R

S T R

S T R

S T R

S T R

S T R

S T R

S T R

S T R

S T R

S T R

S T R

S T R

S T R

S T R

S T R

S T R

S T R

S T R

S T R

S T R

S T R

S T R

S T R

S T R

S T R

S T R

S T R

S T R

S T R

S T R

S T R

S T R

S T R

S T R

S T R

S T R

S T R

S T R

S T R

S T R

S T R

S T R

S T R

S T R

S T R

S T R

S T R

S T R

S T R

S T R

S T R

S T R

S T R

S T R

S T R

S T R

S T R

S T R

S T R

S T R

B:12 P:313

10/12/06 8:55 AM

Page: 2

2006-051947 LAND CORNERS Receipt #17981

Paula Johnson, Ingham County, Michigan

Register of Deeds Stamp & File Number

|    | A  | B | C  | D | E  | F | G  | H | I  | J | K  | L | M |
|----|----|---|----|---|----|---|----|---|----|---|----|---|---|
| 1  |    |   |    |   |    |   |    |   |    |   |    |   |   |
| 2  | 6  |   | 5  |   | 4  |   | 3  |   | 2  |   | 1  |   |   |
| 3  |    |   |    |   |    |   |    |   |    |   |    |   |   |
| 4  | 7  |   | 8  |   | 9  |   | 10 |   | 11 |   | 12 |   |   |
| 5  |    |   |    |   |    |   |    |   |    |   |    |   |   |
| 6  | 18 |   | 17 |   | 16 |   | 15 |   | 14 |   | 13 |   |   |
| 7  |    |   |    |   |    |   |    |   |    |   |    |   |   |
| 8  | 19 |   | 20 |   | 21 |   | 22 |   | 23 |   | 24 |   |   |
| 9  |    |   |    |   |    |   |    |   |    |   |    |   |   |
| 10 | 30 |   | 29 |   | 28 |   | 27 |   | 26 |   | 25 |   |   |
| 11 |    |   |    |   |    |   |    |   |    |   |    |   |   |
| 12 | 31 |   | 32 |   | 33 |   | 34 |   | 35 |   | 36 |   |   |
| 13 |    |   |    |   |    |   |    |   |    |   |    |   |   |

I, DAVID R. LOHR, P.S., in a field survey on 07/18/06, do hereby certify that under requirements of P.A. 74, Michigan P.A. of 1970, the corner points mentioned in lines 1 and 2 above were in conformance with regulations and rules therefore as required in the current manual of survey instructions of the United States Department of the Interior, Bureau of Land Management or by a decree of a Court of Law and/or that the corner points mentioned in lines 3, 4 and 5 above were in conformance with the rules of the Michigan Board of Land Surveyors or by a Decree of a Court of Law, established, re-established, monumented, re-monumented, recovered, found as expressed below:

NOTE: Not more than 2 corners, all in the same town and range, may be recorded on this certificate.

A. Description of original monument and accessories and/or subsequent restoration:

1) CORNER SET BY JOSEPH WAMPLER, DEP. SURVEYOR, NOV.

1825. "W. BTW. 6 & 7, 40.00 CH. (2640.0') SET OR: SEC. P., FW." WITNESSED BY:

SUG 8", S 41 W, 1-1/2 LKS. ( 0.99')

BE 7", N 46-3/4 E, 13 LKS. ( 8.58')

MARGINAL NOTE: BEECH 12", N 21 1-2 W, 60 LKS. (39.60')

BEECH 12", S 48 W, 21 LKS. (13.86')

GLO NOTES SHOW A DISTANCE EAST OF 40 CH. (2640') AND WEST OF 29.28 CH. (1932.48')

2) CORNER REFERENCED IN SURVEY BY T.J. BROWN, DEP. CO. SURVEYOR, DATED DEC. 30, 1869 AND RECORDED IN BOOK 3, PAGE 11, COUNTY SURVEYORS RECORDS. "LOCATED THE CORNER A POST FROM WHICH A BEECH 12 INCHES IN DIAMETER BEARS N 21 1-2 W, 60 LKS. (39.60') NEW A BEECH 12 INCHES IN DIAMETER BEARS S 48 W, 21 LKS. (13.86') NEW SURVEY SHOWS A DISTANCE WEST OF 29.59 CH. (1952.28')

3) CORNER REFERENCED IN SURVEY BY R. J. ROBB, COUNTY SURVEYOR, DATED APRIL 14, 1911 AND RECORDED IN BOOK 3, PAGE 214, COUNTY SURVEYORS RECORDS. "FOUND THE S 1/4 POST AND CHAINED NORTH TO N 1/4 POST. (NO MENTION OF MONUMENT, WITNESSES OR DISTANCES GIVEN)

CONTINUED ON PAGE 2:

B. Description of corner evidence found and/or method applied in restoring or reestablishing corner:

SEARCHED AT APPARENT LOCATION OF CORNER AND FOUND 1/2" X 15" REBAR, 3' SOUTH OF CENTER-LINE OF COLUMBIA ROAD AND ON A FENCELINE TO THE SOUTH. EXCAVATED TO FIND REBAR 4" DEEP, NO MON. BOX PRESENT. DUG THRU 8" OF BIT. PAVEMENT & 10" OF GRAVEL TO HIT POINTED STONE AT 18" IN DEPTH. REBAR WAS SET ALONG THE FLAT (SOUTH) SIDE OF TRI-ANGULAR SHAPED POINTED SANDSTONE, SURROUNDED BY SMALLER STONES. FOUND STONE WAS AT LEAST 18" IN HEIGHT. ACCEPTED FOUND REBAR & STONE AS CORNER AND SET A STANDARD INGHAM COUNTY BAR & PA 345 CAP #30090, IN A NEW MON. BOX. MEASURED NORTH 2647.95' TO B-2, EAST 2663.95' TO C-3 AND WEST 1957.27' TO A-3.

C. Description of monument for corner and accessories established to perpetuate locating the position of the corner:

B-3: T2N, R2E, WHITE OAK TOWNSHIP, INGHAM COUNTY. SET A STANDARD INGHAM COUNTY BAR & PA 345 CAP #30090 AT FOUND REBAR & POINTED STONE. WITNESSED BY:

FOUND NAIL & TAG #25832 (L.BRYAN), EAST SIDE 10" ASH, N 15° W, 31.72'

FOUND NAIL & TAG #25832 (L.BRYAN), SOUTHWEST SIDE 18" BEECH, S 38° E, 38.88'

FOUND NAIL & TAG #25832 (L.BRYAN), EAST SIDE 24" BEECH, S 10° E, 28.03'

FOUND NAIL & TAG #25832 (L.BRYAN), NORTHWEST SIDE 15" BEECH, S 32° W, 31.62'

FOUND REBAR & CAP #13574 (O. BOSS), DUE SOUTH, 32.93'

Signed by

*David R. Lohr*

Date

OCTOBER 4, 2006

Surveyor's Michigan License No.

30090

FORM APPROVED BY MICHIGAN STATE BOARD OF LAND SURVEYORS, JAN. 1971

REVISED MAY 14, 1976

REVISED JAN. 1983

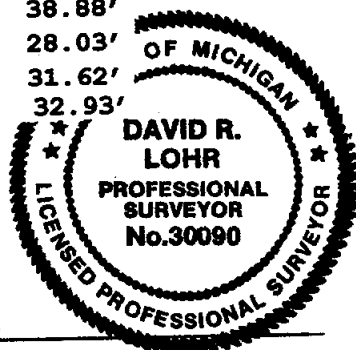
REVISED OCT. 1986

ADAPTED FOR WORD PROCESSING JAN. 1999

P.A. 345 INGHAM COUNTY

PEER APPROVED

*8/29/2000 m*



- 4) CORNER REFERENCED IN LCRC BY OSCAR BOSS, RLS #13574, DATED JUNE 20, 1972 AND RECORDED IN LIBER 2, PAGE 43.  
PART A STATES: B-E: UNKNOWN.  
PART B STATES: B-3: SET P.K. NAIL, SECTION DIVISION.  
PART C STATES: B-3; P.K. NAIL. WITNESSED BY:  
S 35°-38' EAST - 38.64' - NAIL N. SIDE 12" TREE  
S 4° EAST - 27.63' - NAIL NW. SIDE 24" TREE  
S 35°-48' WEST - 31.32' - NAIL N. SIDE 12" TREE
- 5) CORNER REFERENCED IN SURVEY BY OSCAR BOSS, RLS #13574, DATED 06/21/72 AND RECORDED IN LIBER 1, PAGE 435. "N 1/4 COR. SEC 7, T2N, R2E." SAME WITNESSES AS IN ITEM A-4 ABOVE. SURVEY SHOWS A DISTANCE EAST OF 2663.68' AND SOUTH OF 2636.62.
- 6) CORNER REFERENCED IN SURVEYS BY HAROLD J. OLVER, RLS #6354, DATED 06/24/82 AND RECORDED IN LIBER 4, PAGES 568 & 569. "S 1/4 COR. SEC 6, T2N, R2E, WHITE OAK TWP., INGHAM CO., MICH. REC. LIBER 2, P.43, L.S. #13574." NO WITNESSES GIVEN. SURVEY SHOWS A DISTANCE WEST OF 1958.06'.
- 7) CORNER REFERENCED IN SURVEY BY RONALD L. ENGER, LLS #28409, DATED 01/04/96 AND RECORDED IN LIBER 7, PAGE 1035. "SOUTH 1/4 CORNER, SECTION 6, WHITE OAK TWP. RECORDED LIBER 2, PG. 43, 1/2" BAR, 4' SOUTH OF CENTERLINE COLUMBIA RD." WITNESSED BY:  
S 35° E, 38.64', NAIL IN NORTH SIDE 12" BEECH  
S 4° E, 27.63', NAIL IN WEST SIDE 24" BEECH  
S 35° W, 31.32', NAIL IN NORTH SIDE 12" BEECH  
N 40° E, 27.92', CENTERLINE NORTH END 12" CMP  
SURVEY SHOWS A DISTANCE WEST OF 1955.67'.
- 8) CORNER REFERENCED IN SURVEY BY RON HELSEL, RLS #18994, DATED 11/24/01 AND RECORDED IN LIBER 8, PAGE 950. "SOUTH 1/4 CORNER, SECTION 6, T2N, R2E. (LIBER 2, PAGE 43 OF CORNERS), 1/2" BAR IN MON. BOX, 3' SOUTH OF CENTERLINE OF COLUMBIA RD." WITNESSED BY: NAIL NORTH/SIDE 14" OAK, NAZ. 241°, 46.0',  
NAIL EAST/SIDE 12" BEECH, NAZ. 218°, 31.5',  
NAIL EAST/SIDE 22" BEECH, NAZ. 180°, 28.0',  
NAIL WEST/SIDE 18" BEECH, NAZ. 146°, 39.0',  
SURVEY SHOWS A DISTANCE WEST OF 1957.27' TO A-3 AND NORTH OF 2647.95' TO B-2.
- 9) NO OTHER REFERENCES FOUND.

LAND CORNER RECORDATION CERTIFICATE  
Filing Requirement of Act 74, Mich. P.A. 1970

For corners in  
INGHAM  
(County)

Located in:

Corner Code #

WHITE OAK TOWNSHIP.

1. Public Land Survey

T 2N R 2E

C-1

T R

T R

T R

2. Property Controlling  
in Section

S T R

3. Miscellaneous  
Property in Sec.

S T R

4. Lot No. , Recorded Plat

S T R

5. Private Claims

8:12 P:315 10/12/06 8:55 AM  
2006-051949 LAND CORNERS Receipt #17981  
Paula Johnson, Ingham County, Michigan

Page: 2



Register of Deeds Stamp & File Number

|    | A  | B | C  | D | E  | F | G  | H | I  | J | K  | L | M |
|----|----|---|----|---|----|---|----|---|----|---|----|---|---|
| 1  |    |   |    |   |    |   |    |   |    |   |    |   |   |
| 2  | 6  |   | 5  |   | 4  |   | 3  |   | 2  |   | 1  |   |   |
| 3  |    |   |    |   |    |   |    |   |    |   |    |   |   |
| 4  | 7  |   | 8  |   | 9  |   | 10 |   | 11 |   | 12 |   |   |
| 5  |    |   |    |   |    |   |    |   |    |   |    |   |   |
| 6  | 18 |   | 17 |   | 16 |   | 15 |   | 14 |   | 13 |   |   |
| 7  |    |   |    |   |    |   |    |   |    |   |    |   |   |
| 8  | 19 |   | 20 |   | 21 |   | 22 |   | 23 |   | 24 |   |   |
| 9  |    |   |    |   |    |   |    |   |    |   |    |   |   |
| 10 | 30 |   | 29 |   | 28 |   | 27 |   | 26 |   | 25 |   |   |
| 11 |    |   |    |   |    |   |    |   |    |   |    |   |   |
| 12 | 31 |   | 32 |   | 33 |   | 34 |   | 35 |   | 36 |   |   |
| 13 |    |   |    |   |    |   |    |   |    |   |    |   |   |

I, DAVID R. LOHR, P.S., in a field survey on 08/09/06,  
do hereby certify that under requirements of P.A. 74, Michigan P.A. of 1970, the corner points  
mentioned in lines 1 and 2 above were in conformance with regulations and rules therefore  
as required in the current manual of survey instructions of the United States Department of the  
Interior, Bureau of Land Management or by a decree of a Court of Law and/or that the corner  
points mentioned in lines 3, 4 and 5 above were in conformance with the rules of the Michigan  
Board of Land Surveyors or by a Decree of a Court of Law; established, re-established,  
monumented, re-monumented, recovered, found as expressed below:

NOTE: Not more than 2 corners, all in the same town and range, may be recorded  
on this certificate.

A. Description of original monument and accessories and/or subsequent restoration:

1) CORNER SET BY JOSEPH WAMPLER, DEP. SURVEYOR, NOV.

1825. "N. BTW. 5 & 6, INT. N. BR. 25 LKS (16.50') E. OF P., SET P. AT INT.,  
COR. OF 5 & 6, FW." WITNESSED BY:

BE 23", S 33 E, 15-1/2 LKS. ( 10.23')

SUG. 18", S 37-1/2 W, 27 LKS. ( 17.82')

MARGINAL NOTE: W. ASH 10", N 60-1/2° W, 181-2/3 LKS. ( 119.90') "NEW"

GLO NOTES SHOW A DISTANCE SOUTH OF 46.71 CH. (3082.86')

2) CORNER REFERENCED IN SURVEY BY T.J. BROWN, DEP. CO. SURVEYOR, DATED DEC. 17, 1874  
AND RECORDED IN BOOK 3, PAGE 18, COUNTY SURVEYORS RECORDS. CORNER SHOWN AS  
"A POST, FR. WH. AN W. ASH 10" IN DIAM. BEARS N 60-1/2° W, 181-2/3 LKS. ( 119.90')  
NO DISTANCES TO ADJACENT SECTION CORNERS GIVEN.

3) CORNER REFERENCED IN SURVEY BY E.A. CALKINS, SURVEYOR, DATED AUGUST 4, 1904  
AND RECORDED IN MISC. FIELD BOOK #5, PAGE 141-142, COUNTY SURVEYORS RECORDS.  
"THEN RAN WEST ON RANDOM TO NW COR. OF SEC. 5(C-1), COULD NOT FIND WHITE OAK POST,  
BECAUSE WITNESSES WERE UNCERTAIN, BUT FOUND LEROY POST, MEASURED BACK AND SET WHITE  
OAK POST." NO WITNESSES GIVEN AND NO DISTANCES TO ADJACENT SECTION CORNERS GIVEN.

CONTINUED ON PAGE 2:

B. Description of corner evidence found and/or method applied in restoring or reestablishing corner:

SEARCHED AT APPARENT LOCATION OF CORNER AND FOUND HOLE IN BIT. PAVEMENT. EXCAVATED TO  
FIND CONCRETE COLLAR AT DEPTH OF 4", WITH INTACT CONCRETE MONUMENT & CAP INSIDE IT, AS  
PER ITEM A-3 ABOVE. RAISED TO GRADE WITH 2 RISER RINGS. ACCEPTED FOUND CONCRETE MONUMENT  
AS CORNER AND SET A STANDARD INGHAM COUNTY PA 345 CAP #30090 ON TOP OF IT. CORNER FALLS  
1.5' NORTH OF CENTERLINE OF HOWELL ROAD, AND ON OCCUPATION LINE TO SOUTH.  
MEASURED SOUTH 3101.95' TO C-2, WEST 2651.71' TO B-1, AND WEST 16.50' TO C-13, T3N, R2E.

C. Description of monument for corner and accessories established to perpetuate locating the position of the corner:

C-1: T2N, R2E, WHITE OAK TOWNSHIP, INGHAM COUNTY. SET A STANDARD INGHAM COUNTY  
PA 345 CAP #30090 ON FOUND CONCRETE MONUMENT. WITNESSED BY:

FOUND NAIL & TAG #25832 (L.BRYAN), SOUTHWEST SIDE 14" ASH, S 42° E, 97.90'

FOUND NAIL & TAG #18994, EAST SIDE POWER POLE, N 16° W, 164.60'

FOUND BAR & CAP #18994, 21' SOUTH CENTERLINE, S 55° W, 34.85'

FOUND CONCRETE MONUMENT/PA 345 CAP #28414, DUE WEST, 16.50'

SET MAG NAIL & REMON TAG, SOUTH SIDE 30" MAPLE, N 63° W, 151.43'

SET MAG NAIL & REMON. TAG IS DEFINED AS A 1/4" X 2-1/2" MAGNETIC ALUMINUM  
ALLOY NAIL, WITH A 1-1/2" ALUMINUM DISC MARKED "INGHAM PA 345 WITNESS".



Signed by

*David R. Lohr*

Date

OCTOBER 4, 2006

Surveyor's Michigan License No. 30090

P.A. 345 INGHAM COUNTY  
PEER APPROVED 8/29/2006 *ML*

C-1: T2N, R2E, WHITE OAK TOWNSHIP, INGHAM COUNTY-PAGE 2 (PART "A" CONTINUED)

4) CORNER REFERENCED IN LCRC BY RONNIE M. LESTER, RLS #18998, DATED JULY 3, 1980 AND RECORDED IN LIBER 6, PAGE 109.

PART A STATES: C-1: SAME DATA AS IN ITEMS A-1, A-2 & A-3 ABOVE.

PART B STATES: C-1: EXCAVATED A HOLE 12' X 10' TO AN AVERAGE DEPTH OF 4.0' ON THE CENTERLINE OF HOWELL ROAD, +/- 17.0' EAST OF THE CENTERLINE OF SNEDECKER ROAD NORTH ON A FENCE LINE SOUTH. NO EVIDENCE FOUND. CORNER CONSIDERED LOST. SET CORNER ON THE STANDARD TOWNSHIP LINE BETWEEN C-13 AND D-13 LEROY TWP. AT THE GLO FALLING FROM C-13 LEROY. CORNER FALLS +/- 2.0' NORTH OF THE CENTERLINE OF HOWELL ROAD AND +/- 17.0' EAST OF THE CENTERLINE OF SNEDECKER ROAD NORTH AND ON FENCE LINE SOUTH. MEASURED WEST +/- 2601' TO B-1 WHITE OAK.

PART C STATES: C-1: NW CORNER, SECTION 5, T2N, R2E. SET 4" X 36" CONCRETE MONUMENT WITH 1/2" X 38" REROD AND CAP #18998 WITH CONCRETE COLLAR AND COVER IN LOCATION DESCRIBED ABOVE. WITNESSED BY:

|   |               |
|---|---------------|
| TOP CORNER ANGLE IRON FENCE POST,             | SOUTH, 26.26' |
| NAIL & TAG #18998, SOUTHEAST SIDE FENCE POST, | NE, 35.20'    |
| NAIL & TAG #18998, WEST SIDE TELEPHONE POLE,  | NNE, 58.51'   |
| EAST EDGE STOP SIGN,                          | NW, 54.59'    |
| 1/2" IRON, C-13 LEROY TWP., T3N-R2E,          | WEST, 16.50'  |

5) NO OTHER REFERENCES FOUND.

LAND CORNER RECORDATION CERTIFICATE  
Filing Requirement of Act 74, Mich. P.A. 1970

For corners in  
INGHAM  
(County)

Located In:

Corner Code #

WHITE OAK TOWNSHIP.

1. Public Land Survey

T 2N R 2E

C-2

T R

T R

T R

2. Property Controlling  
in Section

S T R

3. Miscellaneous  
Property in Sec.

S T R

4. Lot No. Recorded Plat

S T R

5. Private Claims

B:12 P:316 10/12/06 8:55 AM  
2006-051950 LAND CORNERS Receipt #17981  
Paula Johnson, Ingham County, Michigan

Page: 2



Register of Deeds Stamp & File Number

|    | A  | B | C  | D | E  | F | G  | H | I  | J | K  | L | M |
|----|----|---|----|---|----|---|----|---|----|---|----|---|---|
| 1  |    |   |    |   |    |   |    |   |    |   |    |   |   |
| 2  | 6  | • | 5  |   | 4  |   | 3  |   | 2  |   | 1  |   |   |
| 3  |    |   |    |   |    |   |    |   |    |   |    |   |   |
| 4  | 7  |   | 8  |   | 9  |   | 10 |   | 11 |   | 12 |   |   |
| 5  |    |   |    |   |    |   |    |   |    |   |    |   |   |
| 6  | 18 |   | 17 |   | 16 |   | 15 |   | 14 |   | 13 |   |   |
| 7  |    |   |    |   |    |   |    |   |    |   |    |   |   |
| 8  | 19 |   | 20 |   | 21 |   | 22 |   | 23 |   | 24 |   |   |
| 9  |    |   |    |   |    |   |    |   |    |   |    |   |   |
| 10 | 30 |   | 29 |   | 28 |   | 27 |   | 26 |   | 25 |   |   |
| 11 |    |   |    |   |    |   |    |   |    |   |    |   |   |
| 12 | 31 |   | 32 |   | 33 |   | 34 |   | 35 |   | 36 |   |   |
| 13 |    |   |    |   |    |   |    |   |    |   |    |   |   |

I, DAVID R. LOHR, P.S., in a field survey on 08/24/06,  
do hereby certify that under requirements of P.A. 74, Michigan P.A. of 1970, the corner points  
mentioned in lines 1 and 2 above were in conformance with regulations and rules therefore  
as required in the current manual of survey instructions of the United States Department of the  
Interior, Bureau of Land Management or by a decree of a Court of Law and/or that the corner  
points mentioned in lines 3, 4 and 5 above were in conformance with the rules of the Michigan  
Board of Land Surveyors or by a Decree of a Court of Law; established, re-established,  
monumented, re-monumented, recovered, found as expressed below:

NOTE: Not more than 2 corners, all in the same town and range, may be recorded  
on this certificate.

A. Description of original monument and accessories and/or subsequent restoration:

1) CORNER SET BY JOSEPH WAMPLER, DEP. SURVEYOR, NOV.

1825. "N. BTW. 5 & 6, SET QR. SEC. P. FW." WITNESSED BY:

LYN 6", S 29 W, 11 LKS. ( 7.26')

M 7", N 89 E, 12-1/2 LKS. ( 8.25')

MARGINAL NOTE: ELM 24", S 60° E, 6-1/4 LKS. ( 4.125')

ELM 12", N 19-1/2° W, 43 LKS. (28.38')

GLO NOTES SHOW A DISTANCE SOUTH OF 40 CH. (2640') AND NORTH OF 46.71 CH. (3082.86').

2) CORNER REFERENCED IN SURVEY BY T.J. BROWN, DEP. CO. SURVEYOR, DATED DEC. 17, 1874  
AND RECORDED IN BOOK 3, PAGE 18, COUNTY SURVEYORS RECORDS. CORNER SHOWN AS  
"A POST, FR. WH. AN ELM 24" IN DIAM. BEARS S 60° E, 6-1/4 LKS. ( 4.125')  
A POST, FR. WH. AN ELM 12" IN DIAM. BEARS N 19-1/2° W, 43 LKS. (28.38')  
NO DISTANCES TO ADJACENT SECTION CORNERS GIVEN.

3) CORNER REFERENCED IN SURVEY BY T.J. BROWN, DEP. COUNTY SURVEYOR, DATED MAR. 15, 1878  
AND RECORDED IN BOOK 2, PAGE 156, COUNTY SURVEYORS RECORDS. "A STONE BELOW SURFACE"  
WITNESSED BY: ELM 24", S 60° E, 6-1/4 LKS. ( 4.125')  
ELM 12", N 19-1/2° W, 43 LKS. (28.38')  
SURVEY SHOWS A DISTANCE SOUTH OF 40.00 CH. (2640.00')

CONTINUED ON PAGE 2:

B. Description of corner evidence found and/or method applied in restoring or reestablishing corner:

SEARCHED AT APPARENT LOCATION OF CORNER AND FOUND BAR & CAP #18994 (RON HELSEL) AS PER  
ITEM A-4 & A-5 ABOVE. ACCEPTED FOUND BAR & CAP AS CORNER AND SET A STANDARD INGHAM COUNTY  
BAR & PA 345 CAP #30090 IN FOUND POSITION. USING HELSEL'S TRAVERSE DATA, MEASURED NORTH  
3101.95' TO C-1, SOUTH 2662.39' TO C-3 AND WEST 2653.67' TO B-2.

C. Description of monument for corner and accessories established to perpetuate locating the position of the corner:

C-2: T2N, R2E, WHITE OAK TOWNSHIP, INGHAM COUNTY. SET A STANDARD INGHAM COUNTY  
BAR & PA 345 CAP #30090 AT FOUND BAR & CAP #18994. WITNESSED BY:

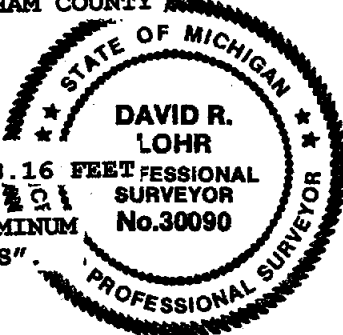
SET MAG NAIL & REMON TAG, SOUTH SIDE 22" OAK, S 75° E, 15.48 FEET

SET MAG NAIL & REMON TAG, EAST SIDE 10" MAPLE, S 30° E, 23.41 FEET

SET MAG NAIL & REMON TAG, EAST SIDE 8" OAK, S 20° W, 13.17 FEET

FOUND NAIL & TAG #25832 (L. BRYAN), SOUTH SIDE 26" MAPLE, S 89° W, 18.16 FEET

SET MAG NAIL & REMON. TAG IS DEFINED AS A 1/4" X 2-1/2" MAGNETIC ALUMINUM  
ALLOY NAIL, WITH A 1-1/2" ALUMINUM DISC MARKED "INGHAM PA 345 WITNESS"



Signed by

*David R. Lohr*

Date

OCTOBER 4, 2006

Surveyor's Michigan License No. 30090

FORM APPROVED BY MICHIGAN STATE BOARD OF LAND SURVEYORS, JAN. 1971  
REVISED MAY 14, 1975  
REVISED JAN., 1983  
REVISED OCT. 1985  
ADAPTED FOR WORD PROCESSING JAN. 1988

P.A. 345 INGHAM COUNTY  
PEER APPROVED 8/29/2006 ML

- 4) CORNER REFERENCED IN LCRC BY RON HELSEL, RLS #18994, DATED NOV. 13, 2001 AND RECORDED IN LIBER 10, PAGE 196.

PART A STATES: C-2: SAME DATA AS IN ITEMS A-1 & A-2 ABOVE.

PART B STATES: C-2: FOUND 14" DIAMETER WEATHERED WOOD ANCHOR POST, FENCES TO WEST, EAST AND SOUTH. EXCAVATED AND FOUND A PLOW POINT SURROUNDED WITH FIELD STONES ON WEST SIDE OF POST. ACCEPTED POSITION OF PLOW POINT AND RAISED TO GRADE. SET 1/2" BAR & CAP AT POSITION OF PLOW POINT ON WEST SIDE OF ANCHOR POST.

PART C STATES: C-2: 1/2" IRON BAR AND CAP #18994 AT 3-WAY FENCE LINE TO WEST, EAST AND SOUTH, NEXT TO POST AND PLOW POINT. WITNESSED BY:  
NAIL & TAG #18994, SOUTH/SIDE 22" OAK, NAZ. 106°, 15.60 FEET  
NAIL & TAG #18994, EAST/SIDE 12" MAPLE, NAZ. 135°, 23.40 FEET  
NAIL & TAG #18994, EAST/SIDE 8" MAPLE, NAZ. 199°, 13.39 FEET  
NAIL & TAG #18994, SOUTH/SIDE 18" MAPLE, NAZ. 269°, 18.21 FEET

- 5) CORNER REFERENCED IN TRAVERSE FOR A SURVEY BY RON HELSEL, RLS #18994, DATED 11/24/01 AND RECORDED IN LIBER 8, PAGE 950. THE EAST 1/4 CORNER IS NOT SHOWN ON THE SURVEY DRAWING, HOWEVER, THE CORNER IS WITNESSED AS FOLLOWS:

EAST 1/4 CORNER, SECTION 6, "SET 1/2" BAR & CAP NEXT TO PLOW POINT ON WEST SIDE OF OLD 14" WOOD ANCHOR POST, FENCES TO WEST, EAST AND SOUTH." WITNESSED BY:

NAIL & TAG #18994, SOUTH/SIDE 22" OAK, NAZ. 106°, 15.60 FEET

NAIL & TAG #18994, EAST/SIDE 12" MAPLE, NAZ. 135°, 23.40 FEET

NAIL & TAG #18994, EAST/SIDE 8" MAPLE, NAZ. 199°, 13.39 FEET

NAIL & TAG #18994, SOUTH/SIDE 18" MAPLE, NAZ. 269°, 18.21 FEET

TRAVERSE NOTES & COMPUTATION SHEET SHOWS A DISTANCE WEST OF 2653.67' TO B-2.

- 6) NO OTHER REFERENCES FOUND.



# LAND CORNER RECORDATION CERTIFICATE

Filing Requirement of Act 74, Mich. P.A. 1970

For corners in

INGHAM

(County)

Located in:

Corner Code #

WHITE OAK TOWNSHIP.

1. Public Land Survey

T 2N R 2E

C-3

T R

T R

T R

S T R

S T R

S T R

S T R

S T R

S T R

S T R

S T R

S T R

S T R

S T R

S T R

S T R

S T R

S T R

S T R

S T R

S T R

S T R

S T R

S T R

S T R

S T R

S T R

S T R

S T R

S T R

S T R

S T R

S T R

S T R

S T R

S T R

S T R

S T R

S T R

S T R

S T R

S T R

S T R

S T R

S T R

S T R

S T R

S T R

S T R

S T R

S T R

S T R

S T R

S T R

S T R

S T R

S T R

S T R

S T R

S T R

S T R

S T R

S T R

S T R

S T R

S T R

S T R

S T R

S T R

S T R

S T R

S T R

S T R

S T R

S T R

S T R

S T R

B:12 P:317 10/12/06 8:55 AM  
2006-051951 LAND CORNERS Receipt #17981  
Paula Johnson, Ingham County, Michigan

Page: 2



Register of Deeds Stamp & File Number

|    | A  | B  | C  | D  | E  | F  | G | H | I | J | K | L | M |
|----|----|----|----|----|----|----|---|---|---|---|---|---|---|
| 1  |    |    |    |    |    |    |   |   |   |   |   |   |   |
| 2  | 6  | 5  | 4  | 3  | 2  | 1  |   |   |   |   |   |   |   |
| 3  |    |    |    |    |    |    |   |   |   |   |   |   |   |
| 4  | 7  | 8  | 9  | 10 | 11 | 12 |   |   |   |   |   |   |   |
| 5  |    |    |    |    |    |    |   |   |   |   |   |   |   |
| 6  | 18 | 17 | 16 | 15 | 14 | 13 |   |   |   |   |   |   |   |
| 7  |    |    |    |    |    |    |   |   |   |   |   |   |   |
| 8  | 19 | 20 | 21 | 22 | 23 | 24 |   |   |   |   |   |   |   |
| 9  |    |    |    |    |    |    |   |   |   |   |   |   |   |
| 10 | 30 | 29 | 28 | 27 | 26 | 25 |   |   |   |   |   |   |   |
| 11 |    |    |    |    |    |    |   |   |   |   |   |   |   |
| 12 | 31 | 32 | 33 | 34 | 35 | 36 |   |   |   |   |   |   |   |
| 13 |    |    |    |    |    |    |   |   |   |   |   |   |   |

I, DAVID R. LOHR, P.S., in a field survey on 07/18/06, do hereby certify that under requirements of P.A. 74, Michigan P.A. of 1970, the corner points mentioned in lines 1 and 2 above were in conformance with regulations and rules therefore as required in the current manual of survey instructions of the United States Department of the Interior, Bureau of Land Management or by a decree of a Court of Law and/or that the corner points mentioned in lines 3, 4 and 5 above were in conformance with the rules of the Michigan Board of Land Surveyors or by a Decree of a Court of Law; established, re-established, monumented, re-monumented, recovered, found as expressed below:

NOTE: Not more than 2 corners, all in the same town and range, may be recorded on this certificate.

A. Description of original monument and accessories and/or subsequent restoration:

1) CORNER SET BY JOSEPH WAMPLER, DEP. SURVEYOR, NOV.

1825. "N. BTW. 7 & 8, SET P., COR. OF 5, 6, 7 & 8 FW." WITNESSED BY:

ASH 20", S 46 1-2 E, 3-1/2 LKS. (2.31')

ASH ??", N 57-1/4 W, 32 LKS. (21.12')

MARGINAL NOTE: LYNN 6", S 74 E, 140 LKS. (92.40') NEW

AND A STONE SET FOR CORNER

GLO NOTES SHOW A DISTANCE NORTH, SOUTH & WEST OF 40 CH. (2640') AND EAST OF 39.43 CH. (2602.38').

2) CORNER REFERENCED IN UNDATED SURVEY BY A.A. HALL, SURVEYOR, IN MISC. WHITE OAK FIELD NOTES. NO MENTION OF MONUMENT OR DISTANCES TO ADJACENT SECTION CORNERS GIVEN.

WITNESSED BY: W. ASH, 14", N 45-3/4 W, 53-1/2 (35.31')

BASS. 4", S 76-1/4 E, 144-1/2 (95.37')

3) CORNER REFERENCED IN SURVEY BY A.P. DRAKE, COUNTY SURVEYOR, DATED MARCH 15, 1878 AND RECORDED IN BOOK 2, PAGE 156, COUNTY SURVEYORS RECORDS. NO MENTION OF MONUMENT, OR WITNESSES GIVEN. SURVEY SHOWS A DISTANCE NORTH OF 40.00 CH. (2640.0') AND EAST OF 39.60 CH. (2613.60').

CONTINUED ON PAGE 2:

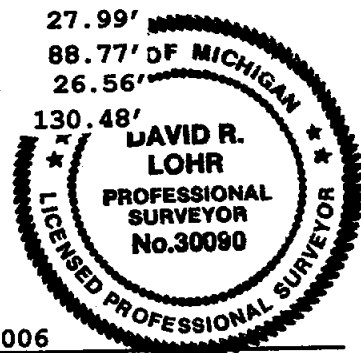
B. Description of corner evidence found and/or method applied in restoring or reestablishing corner:

SEARCHED AT APPARENT LOCATION OF CORNER AND FOUND P.K. NAIL ON CENTERLINE OF COLUMBIA ROAD, ON A FENCELINE TO THE NORTH AND A FIELD LINE TO THE SOUTH. EXCAVATED THRU 3" OF BIT. PAVEMENT & 12" OF GRAVEL. DUG TO TOTAL DEPTH OF 42", FOUND NO OTHER EVIDENCE OF CORNER. ACCEPTED FOUND P.K. NAIL AS BEST AVAILABLE EVIDENCE OF CORNER BASED ON FENCELINE TO NORTH AND CENTERLINE OF ROAD, WITH NO CONFLICTING EVIDENCE OF ANOTHER CORNER POSITION, AND SET A STANDARD INGHAM COUNTY BAR & PA 345 CAP #30090, IN A NEW MONUMENT BOX. MEASURED NORTH 2662.39' TO C-2, EAST 2630.16' TO D-3, SOUTH 2665.77' TO C-4 AND WEST 2663.95' TO B-3.

C. Description of monument for corner and accessories established to perpetuate locating the position of the corner:

C-3: T2N, R2E, WHITE OAK TOWNSHIP, INGHAM COUNTY. SET A STANDARD INGHAM COUNTY BAR & PA 345 CAP #30090 AT FOUND PK NAIL. WITNESSED BY:

FOUND NAIL & TAG #25832 (L.BRYAN), WEST SIDE 26" ASH, N 25° E, 27.99'  
FOUND NAIL & TAG #25832 (L.BRYAN), SOUTH SIDE 8" HICKORY, N 82° E, 88.77' OF MICHIGAN  
FOUND NAIL & TAG #25832 (L.BRYAN), EAST SIDE 6" HICKORY, DUE SOUTH, 26.56'  
FOUND NAIL & TAG #25832 (L.BRYAN), SOUTH SIDE 48" OAK, S 86° W, 130.48'



Signed by

*David R. Lohr*

Date

OCTOBER 4, 2006

Surveyor's Michigan License No.

30090

FORM APPROVED BY MICHIGAN STATE BOARD OF LAND SURVEYORS, JAN. 1971  
REVISED MAY 14, 1975  
REVISED JAN. 1983  
REVISED OCT. 1988  
ADAPTED FOR WORD PROCESSING JAN. 1998

P.A. 345 INGHAM COUNTY

PEER APPROVED

8/29/2006 M

C-3: T2N, R2E, WHITE OAK TOWNSHIP, INGHAM COUNTY-PAGE 2 (PART "A" CONTINUED)

4) CORNER REFERENCED IN LCRC BY OSCAR BOSS, RLS #13574, DATED JUNE 20, 1972 AND RECORDED IN LIBER 2, PAGE 43.

PART A STATES: C-3: UNKNOWN.

PART B STATES: C-3: SET P.K. NAIL, OCCUPATION FENCELINE.

PART C STATES: C-3; P.K. NAIL. WITNESSED BY:

N 13°-40' E - 28.12' - NAIL W. SIDE 14" HICKORY

S 83°-45' E - 119.71' - NAIL N. SIDE 26" MAPLE

S 71°-57' W - 129.10' - NAIL E. SIDE 48" DOUBLE OAK

5) CORNER REFERENCED IN SURVEY BY OSCAR BOSS, RLS #13574, DATED 06/21/72 AND RECORDED IN LIBER 1, PAGE 435. "NE COR. SEC 7, T2N, R2E, SET P.K. NAIL" SAME WITNESSES AS IN ITEM A-4 ABOVE. SURVEY SHOWS A DISTANCE WEST OF 2663.68'.

6) NO OTHER REFERENCES FOUND.