

REMONI

DEC 1 1996

COMM

LAND CORNER RECORDATION CERTIFICATE
Filing Requirement of Act 74, Mich. P.A. 1970

Liber 9 Page 269

For corners in

INGHAM COUNTY

Located in:

Corner Code #

(County)
WHITE OAK TOWNSHIP

1. Public Land Survey

T.2N. R.2E.

C-11

2. Property Controlling
in Section

S. T. R.

3. Miscellaneous
Property in Sec.

S. T. R.

FILED

970044061
11/05/1997 12:39:57
REGISTER OF DEEDS
Paula Johnson
INGHAM COUNTY, MI

Register of Deeds Stamp & File Number

4. Lot No. , Recorded Plat

5. Private Claims

I, DAVID L. CLIFFORD, in a field survey on AUGUST 26, 1997, do hereby state that under requirements of P.A. 74, Michigan P.A. of 1970, the corner points mentioned in lines 1 and 2 above were in conformance with regulations and rules therefore as required in the current manual of survey instructions of the United States Department of the Interior, Bureau of Land Management or by a decree of a Court of Law and for that the corner points mentioned in lines 3, 4 and 5 above were in conformance with the rules of the Michigan Board of Land Surveyors or by a Decree of a Court of Law; established, re-established, monumented, recovered, found as expressed below:

NOTE: Not more than 2 corners, all in the same town and range, may be recorded on this certificate.

	A	B	C	D	E	F	G	H	I	J	K	L	M
1													
2	6	5	4	3	2	1							
3													
4	7	6	5	4	3	2	1						
5													
6	18	17	16	15	14	13							
7													
8	19	18	17	16	15	14	13	12	11	10	9	8	7
9													
10	30	29	28	27	26	25							
11													
12	31	30	29	28	27	26	25	24	23	22	21	20	19
13													

A. Description of original monument and accessories and/or subsequent restoration:

- JOSEPH WAMPLER D.S. SET POST IN ORIGINAL GOVERNMENT SURVEY IN NOVEMBER 1825: B.O. 20" N12-3/4E 36LKS; W.O. 23" S6-3/4W 43LKS
- J. YOKUM, FORMER WASHTENAW COUNTY SURVEYOR WITNESSED CORNER IN 1878 AND RECORDED THEM IN HIS PRIVATE NOTES (NOW IN THE POSSESSION OF WOLVERINE ENGINEERS & SURVEYORS): W.O. 8" N78 1/2W 57LKS, ELM 6" N13 1/2E 37LKS
- A.P. DRAKE, COUNTY SURVEYOR, STATES IN A SURVEY OF THE NW 1/4 OF SECTION 32 RECORDED IN VOLUME 3 PAGE 180 IN JULY 1881 THAT CORNER IS A STONE PLACED BY MR. YOKUM OF WASHTENAW COUNTY: W.O. 10" N79 1/2W 57LKS (37.8')
- M. FOUTY, LPS #18998, RECORDED CORNER IN LIBER 3 PAGE 562 IN APRIL 1976 & RERECORDED IT IN LIBER 5 PAGE 204 IN MARCH 1979 BECAUSE HE HAD THE WITNESSES TRANSPOSED ON THE FIRST RECORDING: AFTER FINDING NO RECORD OF SUBSEQUENT RESTORATION BY THE COUNTY SURVEYOR HE SET 1/2" BAR & CAP FROM ADJACENT OCCUPATION LINES; NAIL & TAG SE SIDE 22" MAPLE WEST 25.82', NAIL & TAG NORTH SIDE 32" OAK EAST 20.38', NAIL & TAG W. SIDE 26" MAPLE NE 35.75'
- J STEPHENS LPS # 18053 USED CORNER IN AN ACT 132 SURVEY RECORDED IN LIBER 4 PAGE 17 IN FEBRUARY 1980 WITH SAME WITNESSES AS ITEM 4

B. Description of corner evidence found and/or method applied in restoring or reestablishing corner:

SEARCHED AT APPARENT LOCATION OF CORNER AND FOUND A 1/2" BAR & MUTILATED CAP 2' EAST OF CENTERLINE PROCTER ROAD OPPOSITE ANCHOR POST TO WEST, MATCHING ALL FOUTY WITNESSES. YOKUM & DRAKE'S 10" OAK WITNESS TREE STILL STANDS (NOW 56") AND WITNESS DISTANCE IS NOT BEST FIT TO BAR. PULLED 36" FROM FACE OF 56" OAK AND EXCAVATED 6' X 6' HOLE 2' DEEP INTO NATURAL GROUND. HOLE ENCOMPASSED LOCATION OF BAR. FOUND NO FURTHER INDICATION OF CORNER. AS ROAD APPEARS TO BE CUT 2-3' IN THIS AREA BELIEVE STONE WAS DESTROYED IN THIS CUT. ACCEPTED 1/2" BAR AS CORNER MARKER BECAUSE OF INABILITY TO RECOVER ANY OTHER EVIDENCE OF A HISTORICAL NATURE. REPLACED 1/2" BAR WITH 3/4" BAR & PA 345 CAP.

C. Description of monument for corner and accessories established to perpetuate locating the position of the corner:

C-11 T2N, R2E
3/4" X 24" STEEL BAR & YELLOW PLASTIC CAP IMPRINTED PA 345 PS 25837
FOUND NAIL & TAG #18998 (RON LESTER) WEST SIDE 30" MAPLE, 30° NAZ, 35.75'
SET NAIL & TAG #28409 (RON ENGER) SE SIDE 10" MAPLE, 215° NAZ, 45.42'
FOUND NAIL & TAG #18998 NORTH SIDE 35" OAK, 100° NAZ, 20.39'
FOUND NAIL & TAG #18998 SOUTH SIDE 23" MAPLE, 280° NAZ, 25.63'
FOUND NAIL & TAG #18998 NORTH SIDE 56" OAK, 285° NAZ, 40.78'

Signed by David L. Clifford
Surveyor's Michigan License No. 25837

Date OCTOBER 15, 1997



P.A. 345 INGHAM COUNTY
PEER APPROVED: 10/16/97 M

RECEIVED BY INGHAM STATE BOARD OF PROFESSIONAL SURVEYORS, JAN. 28, 1971
REVISED MAY 14, 1976
REVISED JAN. 1989
REVISED OCT., 1988

DEC 1 1997

COMMUNICATIONS

LAND CORNER RECORDATION CERTIFICATE
Filing Requirement of Act 74, Mich. P.A. 1970

Liber 9 Page 188

For corners in
WHITE OAK TOWNSHIP
INGHAM COUNTY

Located in: Corner Code #

1. Public Land Survey T 2N R 2E C-12
T R
T R
T R
2. Property Controlling S T R
in Section S T R
3. Miscellaneous S T R
Property in Sec. S T R

FILED

970026948
07/22/1997 12:51:56
REGISTER OF DEEDS
Paula Johnson
INGHAM COUNTY, MI

Register of Deeds Stamp & File Number

4. Lot No. Recorded Plat
5. Private Claims

I, Maurice H. Mahieu, in a field survey on April 8, 1994 do hereby state that under requirements of P.A. 74, Michigan P.A. of 1970, the corner points mentioned in lines 1 and 2 above were in conformance with regulations and rules therefore as required in the current manual of survey instructions of the United States Department of the Interior, Bureau of Land Management or by a decree of a Court of Law and for that the corner points mentioned in lines 3, 4 and 5 above were in conformance with the rules of the Michigan Board of Land Surveyors or by a Decree of a Court of Law; established, re-established, monumented, recovered, found as expressed below:

NOTE: Not more than 2 corners, all in the same town and range, may be recorded on this certificate.

A. Description of original monument and accessories and/or subsequent restoration:

- GLO corner set by Joseph Wampler, US Deputy Surveyor on November 30, 1823 as "40.00 Set qu. sec. Post; B.O. 20 N 14 1/4 W 26; B.O. 20 S 14 1/4 E 34.
- Survey by A. P. Drake, County Surveyor in Liber 2, Page 198 on May 3, 1881 set "Post (Stone & Brick) SW Corner of School House bears N 55 3/4 E 114 1/4 lks SE Cor. of Daggett Monument N 21 3/4 W 150 1/4 lks.
- Survey by E. A. Calkins in Liber 5, Page 40 on June 4, 1990 calls for "Stone & Brick, F. W. Bears SW Corner of School House S 55 3/4 E 114 1/4 lks; SE Corner of Daggett Monument NW 200 3/4 lks.

See Part A continued on back

B. Description of corner evidence found and/or method applied in restoring or reestablishing corner:

Found 1/2" rod as recorded in Liber 3, Page 325. In an uncompleted survey in April 1994 by this surveyor, the witness of E.A. Calkins of the Daggett Monument was found. Measured southeast of monument 200 3/4 links (132.5'). Dug 2" diameter hole 14' north of the centerline intersection of Swan and Proctor Roads. Found large pointed stone surrounded by smaller stones and brick. Measured 13.07 feet north of west 1/4 corner recorded in Liber 3, Page 325, measured 132.3' ± SSE of Southeast Corner of Daggett Monument (cemetery headstone). Set 4" x 36" concrete monument with 1/2" iron rod and cap #28414 over location of stone. Set monument box with cover over concrete monument. Assume the A. P. Drake distance of 150 1/4 lks to monument was in error and E. A. Calkins dimension of 200 3/4 is correct. The found stone is assumed to be the stone and brick by both former County Surveyors and is the perpetuated location for the corner.

C. Description of monument for corner and accessories established to perpetuate locating the position of the corner:

Set 4" x 36" monument with 1/2" iron rod with cap #28414, witnessed by:
Nail and Tag #18998 South side 32" Oak N70° W 54.95 feet
Nail and Tag #18998 South side 32" Oak N80° W 77.04 feet
Nail and Tag #28414 East side Utility Pole S30° E 59.70 feet
Nail and Tag #28414 North side Utility Pole N50° E 40.50 feet
Centerline of 3" diameter metal fence corner post N45° E 36.72 feet
3/4" iron rod (L3, P325) South 13.07 feet
Southeast Corner of Daggett Monument, N20° W 132.3 feet

Signed by Maurice H. Mahieu Date 7-8-97
Surveyor's Michigan License No. 28414

FORM APPROVED BY MICHIGAN STATE BOARD OF PROFESSIONAL SURVEYORS, JAN 28, 1971
REVISED MAY 14, 1975

REVISED JAN.
REVISED OCT.



P.A. 345 INGHAM COUNTY
PEER APPROVED 3/25/97

Part A continued

4. Ingham County Road Commission Grid Map of 1968 calls for 1" iron witnessed by: P.P. NE 50.70'
P.O. SE 58.32'
14" Oak NW 60.89'
3" Fence Post NNW 46.48'
5. Act 74 LCRC in Liber 3, Page 325 on Jan. 28, 1975 by George M. Young, P.S. 17640 calls for found 3/4" iron rod witnessed by:
Nail in 18" Oak N50° W 80.35'
Nail in 18" Oak N40° W 60.47'
Face of 2" iron post N20° W 46.38'
6. An Act 132 Survey recorded by George Young P.S. 17640 in Liber 2, Page 263 dated Jan. 29, 1975 calls for same as A-5.
7. An Act 132 Survey by George Young P.S. 17640 in Liber 2, Page 327 dated April 1, 1975 calls for same as A-5.
8. An Act 132 Survey recorded by Marv Fouty P.S. 18989 in Liber 2, Page 632 dated April 28, 1976 calls for same as A-5.
9. An Act 132 Survey recorded by Austin Williams P.S. 21275 in Liber 3, Page 953 dated Aug. 7, 1979 calls for same as A-5.
10. An Act 132 Survey recorded by James E. Stephens P.S. 16053 in Liber 4, Pages 17 through 22 dated May 7, 1980 calls for same as A-5.
11. Act 132 Survey by George Young P.S. 17640 recorded in Liber 5, Page 516 on October 6, 1988 calls for: Found 3/4" iron rod witnessed by:
Nail in 18" Oak N30° W 80.35'
Nail in 18" Oak N40° W 60.47'
Face of 2" iron post N20° W 46.38'
12. Act 132 survey recorded by Ronnie Lester, P.S. 18998 in Liber 6, Page 958, 959, dated June 5, 1992 calls for 3/4" iron bar, witnessed by:
Found nail and cap West side U. Pole 50° az. 47.8'
Northwest corner house #3010 foundation, 142° az. 151.1'
Set nail and tag in South side 24" Oak, 301° az. 60.2'
Face of 3" steel fence corner post at cemetery 324° az. 46.3'
13. In private records of Wolverine Engineers and Surveyors, Inc. of an uncompleted job April 1994 calls for set concrete monument
Explanation in Part B.
14. An Act 132 survey by Maurice Mahieu, P.S. 28414 recorded in Liber 7, Page 329 dated August 9, 1994 calls for corner as dictated by this certificate and the corner recorded in Liber 3, Page 325 as a property controlling corner.
15. An Act 132 Survey recorded by Ron Helsel P.S. 18994 in Liber 7, Page 407 dated November 15, 1994 calls for same as A-5.

FILED

21
SURVEY & MONUMENTATION
APR 10 1995
COMMISSION

LIBER 8 PAGE 391

FILED

LAND CORNER RECORDATION CERTIFICATE
Filing Requirement of Act 74, Mich. P.A. 1970

DEC 1 8 06 AM '94
REGISTER OF DEEDS
Dana Johnson
INGHAM COUNTY, MICH.

For corners in

INGHAM COUNTY
(County)

Located in:

Corner Code-#

WHITE OAK TOWNSHIP

1. Public Land Survey: T 2N R 2E C-13
T R
T R
T R
T R
2. Property Controlling S T R
in Section S T R
3. Miscellaneous S T R
Property in Sec. S T R

Register of Deeds Stamp & File Number

4. Lot No. , Recorded Plat
5. Private Claims

I, David L. Clifford a field survey on April 23, 1994,
do hereby certify that under requirements of P.A. 74, Michigan P.A. of 1970, the corner points mentioned
in lines 1 and 2 above were in conformance with regulations and rules therefore as required in the
current manual of survey instructions of the United States Department of the Interior, Bureau of Land
Management or by a decree of a Court of Law and/or that the corner points mentioned in lines 3, 4 and 5
above were in conformance with the rules of the Michigan Board of Land Surveyors or by a Decree of a
Court of Law; established, re-established, monumented, re-monumented, recovered, found as
expressed below:

NOTE: Not more than 4 corners, all in the same town and range, may be recorded
on this certificate.

A. Description of original monument and accessories and/or subsequent restoration:

1. Original Post set by J. Wampler D.S. in Aug. 1824
W.O. 20 N51E 6 (4.0')
Maple 9 N58E 98 1/2 (65.0')
2. Corner Used by W.A. Rowe Co. Surveyor in Oct. 1895
recorded in Field book 15 page 26 in which he stated that
he found the original post and witnesses in good condition
and he found the original post at the N.W. Corner
of Sec. 5 Stockbridge in good condition and in the
proper relationship to the S.W. Cor. of Sec. 32
White Oak Township.

B. Description of corner evidence found and/or method applied in restoring or reestablishing corner:

Searched at apparent location of corner and found Anchor
Post hole 213.2 feet East of C1 Stockbridge Township
This being the exact GLO falling I accepted Post Hole
as location of corner and set Standard Bar & PA 345
Cap in Center of large mound of stone after excavating
around post hole and finding a fantastic amount of
run of the mill fence post stones. Measured East
2631.43' to D13 White Oak Township.

C. Description of monument for corner and accessories established to perpetuate locating the position of the corner:

Set Standard 3/4" Steel Bar and PA 345 Cap PS #25837
in Anchor Post Hole At East-West-North Fence Corner

Set Nail & Tag#25837 in S. Side 12" Hick. Naz 98° 40.42'
Set Nail & Tag#25837 in W. Side 36" Map. Naz 190° 39.91'
Set Nail & Tag#25837 in W. Side 14" Hick. Naz 217° 49.93'
Set Nail & Tag#25837 in SE Side 22" Swamp Oak Naz 238° 25.74'
3/4" Pipe (C-1, T1N, R2E) Naz 272° 213.20'



Signed by

David Clifford

Date Oct. 11 1994

Surveyor's Michigan License No. 25837

P.A. 345 INGHAM COUNTY

PEER APPROVED 10/12/94

2749

APPROVED BY MICHIGAN STATE BOARD OF LAND SURVEYORS, JAN. 31
RENEWED MAY 1
1995

3. George Young L.S. #17640 recorded corner in Liber 3 of
corners page 325 in Jan. 1975 as an anchor post.

LIBER

8 PAGE 392

Nail in 24" Maple South 39.95'
Nail in 12" Hick. S40°W 49.57'
Nail in 18" Oak S50°W 25.76'

4. George Young used corner in surveys recorded in liber 2
of surveys page 263 in Jan. 1975 and liber 2 page 327
in April 1975 with the same mon. & witnesses as in item
3.

2749

8 30T

LAND CORNER RECORDATION CERTIFICATE

Filing Requirement of Act 74, Mich. P.A. 1970

For corners in

INGHAM

(County)

Located In:

Corner Code #

WHITE OAK TOWNSHIP.

1. Public Land Survey

T 2N R 2E

D-11

T R

T R

T R

2. Property Controlling in Section

S

T R

S

T R

3. Miscellaneous Property in Sec.

S

T R

S

T R

4. Lot No. Recorded Plat

5. Private Claims

B: 13 P: 79 07/18/2007 09:01 AM
2007-031719 LAND CORNERS Receipt #29565
Paula Johnson, Ingham County, Michigan

Pages: 1



Register of Deeds Stamp & File Number

	A	B	C	D	E	F	G	H	I	J	K	L	M
1													
2	6	5	4	3	2	1							
3													
4	7	8	9	10	11	12							
5													
6	18	17	16	15	14	13							
7													
8	19	20	21	22	23	24							
9													
10	30	29	28	27	26	25							
11													
12	31	32	33	34	35	36							
13													

I, DAVID R. LOHR, P.S., in a field survey on MAY 22, 2007, do hereby certify that under requirements of P.A. 74, Michigan P.A. of 1970, the corner points mentioned in lines 1 and 2 above were in conformance with regulations and rules therefore as required in the current manual of survey instructions of the United States Department of the Interior, Bureau of Land Management or by a decree of a Court of Law and/or that the corner points mentioned in lines 3, 4 and 5 above were in conformance with the rules of the Michigan Board of Land Surveyors or by a Decree of a Court of Law, established, re-established, monumented, re-monumented, recovered, found as expressed below.

NOTE: Not more than 2 corners, all in the same town and range, may be recorded on this certificate.

A. Description of original monument and accessories and/or subsequent restoration:

1) CORNER SET BY JOSEPH WAMPLER, DEP. SURVEYOR, NOV.

1825. "W. CR. BTW. 29 & 32, 40.00 CH. (2640.0') SET QR. SEC. P. AT AVER., FW." WITNESSED BY: LINN 20", S 7-1/2 W, 15 LKS. (9.90')

" 9", N 63-1/2 E, 17 LKS. (11.22')

GLO NOTES SHOW A DISTANCE EAST AND WEST OF 40 CH. (2640').

2) CORNER REFERENCED IN SURVEY BY A.P.DRAKE, COUNTY SURVEYOR, DATED MAY 3, 1881 AND RECORDED IN VOLUME 3, PAGE 180, INGHAM COUNTY SURVEYORS RECORDS AS "POST-3" X 4" SQUARED, NO TREES. FOUND THE ORIGINAL CORNER" NO OTHER WITNESSES GIVEN. SURVEY SHOWS A DISTANCE WEST OF 40.00 CH. (2640.00') AND ONLY A BEARING SOUTH, NO DISTANCE.

3) CORNER REFERENCED IN SURVEY BY MAURICE H. MAHIEU, LLS #28414, DATED 10/27/88 AND RECORDED IN LIBER 5, PAGE 992. "SOUTH 1/4 CORNER, SECTION 29, T2N, R2E, WHITE OAK TWP. NO MENTION OF MONUMENT OR WITNESSES GIVEN. SURVEY SHOWS A DISTANCE EAST OF 2656.69' TO E-11.

4) NO OTHER REFERENCES FOUND.

B. Description of corner evidence found and/or method applied in restoring or reestablishing corner:

SEARCHED AT APPARENT LOCATION OF CORNER AND FOUND A 3/4" X 30" SMOOTH STEEL BAR, SET IN A CIRCLE OF STONES WITH ROTTED OFF WOODEN ANCHOR POST REMAINS, AT THE NORTH END OF A FENCELINE TO THE SOUTH. ALSO FOUND FENCELINE TO THE WEST. TRAVERSED SECTION 32 AND DETERMINED THAT THE FOUND CORNER FALLS ABOUT 14.5' SOUTH OF A LINE BETWEEN THE NORTHEAST AND NORTHWEST SECTION CORNERS. CORNER FALLS ABOUT 15' SOUTH OF AN OPEN DRAIN EXTENDED FROM THE WEST. LOCATED THE FENCELINE TO THE EAST, WHICH ENDS ABOUT 1320' EAST. THIS FENCELINE, IF EXTENDED WEST TO THIS LOCATION, WOULD FALL ABOUT 21.7' SOUTH OF THE FOUND LOCATION. ACCEPTED FOUND BAR AS CORNER AND SET A STANDARD INGHAM COUNTY PA 345 CAP #30090 ON IT. MEASURED EAST 2656.77' TO E-11, SOUTH 2639.98' TO D-12 AND WEST 2643.76' TO C-11. CORNER FALLS 15' WEST OF AN OPEN DRAIN SOUTH AND ON THE CENTERLINE OF THE SAME DRAIN EXTENDED FROM THE NORTH.

C. Description of monument for corner and accessories established to perpetuate locating the position of the corner:

D-11: T2N, R2E, WHITE OAK TOWNSHIP, INGHAM COUNTY. SET A STANDARD INGHAM COUNTY PA 345 CAP #30090 ON FOUND 3/4" BAR IN ANCHOR POST HOLE. WITNESSED BY:

SET MAG NAIL & REMON TAG, SOUTH SIDE 7" CHERRY, N 76° W, 53.11'

FACE OF 1-1/2" FENCE POST (GRAVEL PIT FENCE), S 85° W, 7.53'

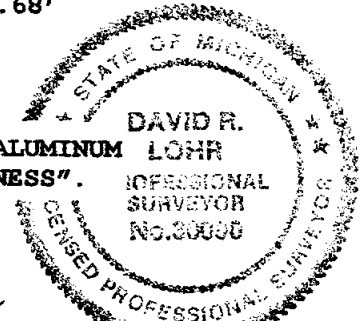
SET MAG NAIL & REMON TAG, WEST SIDE 6" CHERRY, DUE SOUTH, 162.68'

C-11, REMON. BAR & CAP, AZ. 271-20-36, 2643.76'

D-12, REMON. BAR & CAP, AZ. 176-56-10, 2639.98'

E-11, REMON. BAR & CAP, AZ. 90-42-47, 2656.77'

SET MAG NAIL & REMON. TAG IS DEFINED AS A 1/4" X 2-1/2" MAGNETIC ALUMINUM ALLOY NAIL, WITH A 1-1/2" ALUMINUM DISC MARKED "INGHAM PA 345 WITNESS".



P.A. 345 INGHAM COUNTY

PEER APPROVED 6/19/2007 M

Signed by

David R. Lohr

Date JULY 07, 2007

Surveyor's Michigan License No. 30090

LAND CORNER RECORDATION CERTIFICATE

Filing Requirement of Act 74, Mich. P.A. 1970

For corners in
INGHAM
(County)

Located in:

Corner Code #

WHITE OAK TOWNSHIP.

1. Public Land Survey

T 2N R 2E

D-12

T R

T R

T R

S T R

S T R

S T R

S T R

2. Property Controlling
in Section

3. Miscellaneous
Property in Sec.

4. Lot No.

Recorded Plat

5. Private Claims

B: 13 P: 80 07/18/2007 09:01 AM
2007-031720 LAND CORNERS Receipt #29565
Paula Johnson, Ingham County, Michigan

Pages: 2



Register of Deeds Stamp & File Number

	A	B	C	D	E	F	G	H	I	J	K	L	M
1													
2	6	5	4	3	2	1							
3													
4	7	8	9	10	11	12							
5													
6	18	17	16	15	14	13							
7													
8	19	20	21	22	23	24							
9													
10	30	29	28	27	26	25							
11													
12	31	32	33	34	35	36							
13													

I, DAVID R. LOHR, P.S., in a field survey on MAY 16, 2007,
do hereby certify that under requirements of P.A. 74, Michigan P.A. of 1970, the corner points
mentioned in lines 1 and 2 above were in conformance with regulations and rules therefore
as required in the current manual of survey instructions of the United States Department of the
Interior, Bureau of Land Management or by a decree of a Court of Law and/or that the corner
points mentioned in lines 3, 4 and 5 above were in conformance with the rules of the Michigan
Board of Land Surveyors or by a Decree of a Court of Law, established, re-established,
monumented, re-monumented, recovered, found as expressed below:

NOTE: Not more than 2 corners, all in the same town and range, may be recorded
on this certificate.

A. Description of original monument and accessories and/or subsequent restoration:
1) CORNER NOT SET IN GLO SURVEY OF 1825.

2) CORNER REFERENCED IN SURVEY BY A. JACKSON, CO. SURVEYOR, DATED JUNE 26, 1854
AND RECORDED IN BOOK 4, PAGE 361, COUNTY SURVEYORS RECORDS. NO MENTION OF MONUMENT.
WITNESSED BY: W. OAK, 22", N 17-3/4 E, 131 LKS. (86.46')
"NO OTHER TREE."
SURVEY SHOWS A DISTANCE EAST OF 158 RODS-43.5 LKS. (2635.71') AND SOUTH OF
159 RODS-23 LKS. (2638.68')

CONTINUED ON PAGE 2:

B. Description of corner evidence found and/or method applied in restoring or reestablishing corner:

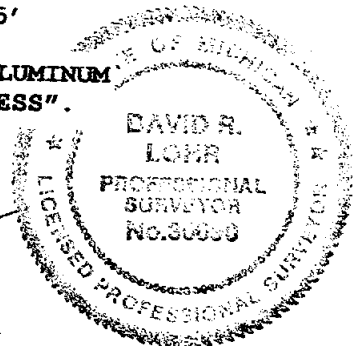
SEARCHED AT APPARENT LOCATION OF CORNER AND FOUND TWO POSSIBLE CORNER LOCATIONS, ONE
MARKED WITH A 3/4" PIPE (ITEM A-4, ORIGIN UNKNOWN), AND THE OTHER, N 50° E, 3.95', WITH
A 1/2" REBAR (ITEM A-7). EXCAVATED AT LOCATION OF PIPE TO FIND A 3/4" X 18" PINCH PIPE.
DUG TO 42", FOUND NO ADDITIONAL EVIDENCE. EXCAVATED AT REBAR TO FIND IT SET INSIDE A
1-1/2" PIPE AT 8" DEEP. DUG AROUND PIPE TO FIND IT SURROUNDED WITH ROCKS AND FOUND LOTS
OF CROCKERY AT 20" DEEP. ACCEPTED FOUND REBAR, PIPE AND CROCKERY AS PERPETUATION OF
SURVEYOR DRAKE'S 1881 CORNER (ITEM A-3). COULD NOT REMOVE PIPE, DROVE IT DOWN AND SET A
STANDARD INGHAM COUNTY BAR & PA 345 CAP #30090, OVER TOP OF IT, IN A NEW MONUMENT BOX.
REPLACED FOUND 3/4" PIPE TO THE SOUTHWEST. TRAVERSED SECTION 32, FOUND CORNER FALLS 3.82'
SOUTH X 7.00' EAST OF THE INTERSECTION OF LINES BETWEEN THE ADJACENT 1/4 CORNERS, AND 7'
NORTH OF THE CENTERLINE OF SWAN ROAD. MEASURED NORTH 2639.98' TO D-11, SOUTH 2642.94' TO
D-13, EAST 2652.33' TO E-12 AND WEST 2646.64' TO C-12.

C. Description of monument for corner and accessories established to perpetuate locating the position of the corner:

E-12: T2N, R2E, WHITE OAK TOWNSHIP, INGHAM COUNTY. SET A STANDARD INGHAM COUNTY
BAR & PA 345 CAP #30090 OVER FOUND REBAR, 1-1/2" PIPE & CROCKERY. WITNESSED BY:
SOUTHEAST CORNER HOUSE (#3255) FOUNDATION, N 31° E, 116.56'
SOUTHWEST CORNER HOUSE (#3255) FOUNDATION, N 15° E, 107.00'
SET MAG NAIL & REMON TAG, SOUTH SIDE 15" MAPLE, N 60° E, 39.41'
SET MAG NAIL & REMON TAG, TOP OF STUB POLE, N 80° E, 84.98'
3/4" PIPE, (INGHAM COUNTY ROAD COMMISSION) S 50° W, 3.95'

SET MAG NAIL & REMON. TAG IS DEFINED AS A 1/4" X 2-1/2" MAGNETIC ALUMINUM
ALLOY NAIL, WITH A 1-1/2" ALUMINUM DISC MARKED "INGHAM PA 345 WITNESS".

P.A. 345 INGHAM COUNTY
PEER APPROVED 6/19/2007



Signed by David R. Lohr

Date JULY 07, 2007

Surveyor's Michigan License No. 30090

- 3) CORNER REFERENCED IN SURVEY BY A.P. DRAKE, COUNTY SURVEYOR, DATED MAY 3, 1881 AND RECORDED IN VOLUMN 3, PAGE 180, INGHAM COUNTY SURVEYORS RECORDS AS: "STONE & CROC., ESTABLISHED AT THE INTERSECTION OF THE QUARTER LINES." WITNESSED BY:
W. O. 12 IN., N 16-1/4 E, 98 LKS. (64.68')
SURVEY SHOWS A DISTANCE WEST OF 40.05 CH. (2643.30') AND ONLY A BEARING NORTH, NO DISTANCE GIVEN.
- 4) CORNER REFERENCED IN INGHAM COUNTY GRID MAP, DATED JANUARY 1, 1969 AS:
IRON (1968) WITNESSED BY: 40" MAPLE, NNE, 76.60'
SE COR. FOND., NE, 120.45' (FOUND- MEAS. 116.56')
NW COR. 12" CULVT., SSE, 19.33'
SW COR. 12" CULVT., NNW, 11.09'
- 5) CORNER REFERENCED IN LCRC BY GEORGE M. YOUNG, RLS #17640, DATED DEC. 31, 1974 AND RECORDED IN LIBER 3, PAGE 325.
PART A STATES: D-12: ORIGINAL MONUMENT AND ACCESSORIES NOT FOUND.
PART B STATES: D-12: FOUND 1" IRON PIPE.
PART C STATES: D-12: 1" IRON PIPE" - WITNESSED BY:
NAIL IN 18" MAPLE, N 10° E, 94.57'
NAIL IN 36" MAPLE, N 15° E, 71.83'
SE COR. HOUSE NO. 3255, N 30° E, 116.40' (FOUND- MEAS. 116.56')
- 6) CORNER REFERENCED IN FOLLOWING SURVEYS BY GEORGE M. YOUNG, RLS #17640:
DATED 1/10/75 AND RECORDED IN LIBER 2, PAGE 263:
DATED 2/24/75 AND RECORDED IN LIBER 2, PAGE 327:
DATED 7/06/87 AND RECORDED IN LIBER 5, PAGE 516:
"CENTER OF SECTION 32, T2N, R2E, FOUND 1" IRON PIPE. SAME WITNESSES AS IN ITEM A-4 ABOVE. SURVEYS SHOW A DISTANCE WEST OF 2643.13'.
- 7) CORNER REFERENCED IN CETA REMON. PROJECT TRAVERSE POINT WITNESS REPORT, BY LARRY BRYAN, DATED 4/12/78 AS: "FOUND 1-1/2" PIPE, 1.4' BELOW ROAD, LEFT 1/2" BAR ON TOP TO SAME WITNESSES, AS RECORDED IN LIBER 3, PG. 325." WITNESSED BY:
FOUND NAIL IN 18" MAPLE, N 10° E, 94.57'
FOUND NAIL IN 36" MAPLE, N 15° E, 73.00'
SE CORNER HOUSE #3255, N 30° E, 116.40' (FOUND- MEAS. 116.56')
- 8) CORNER REFERENCED IN SURVEY BY MAURICE H. MAHIEU, ILS #28414, DATED 6/06/94 AND RECORDED IN LIBER 7, PAGE 329. "CENTER OF SECTION 32, T2N, R2E, WHITE OAK TWP., INGHAM CO., MICH. FOUND 1/2" IRON ROD. WITNESSED BY:
3/4" IRON ROD WITH CAP 19826 (PATRICK L. BENTON), NORTH, 33.09' (FOUND)
N&T #28414, W.SIDE 42" MAPLE, N 15° E, 72.92'
SE CORNER HOUSE STONE FOUNDATION, N 25° E, 116.58' (FOUND- MEAS. 116.56')
C/L TOP BURIED CABLE BOX, EAST, 84.87'
SURVEY SHOWS A DISTANCE WEST OF 2643.13'.
- 9) CORNER REFERENCED IN SURVEY BY RON HELSEL, RLS #18994, DATED 11/26/96 AND RECORDED IN LIBER 7, PAGE 992. "CENTER OF SECTION 32, T2N, R2E, FOUND 1/2" BAR: WITNESSED BY: FOUND 3/4" PIPE, S 45° W, 4.02'
FOUND NAIL & TAG NO. 28414, W.SIDE 40" MAPLE, 72.92 FEET (NO DIRECTION)
SE CORNER OF HOUSE FOUNDATION, N 25° E, 116.56 FEET (FOUND)
FOUND NAIL & WASHER, W/SIDE 20" MAPLE, N 09° E, 80.34 FEET
SURVEY SHOWS NO DISTANCES TO ADJACENT SECTION CORNERS.
- 10) NO OTHER REFERENCES FOUND.

LAND CORNER RECORDATION CERTIFICATE
Filing Requirement of Act 74, Mich. P.A. 1970

LIBER 8 PAGE 381

FILED

Dec 1 8 05 AM '94

REGISTER OF DEEDS
INGHAM COUNTY, MICH.

For corners in

INGHAM

(County)

Located in:

Corner Code =#

WHITE OAK TOWNSHIP

1. Public Land Survey

T 2N R 2E

D-13

T R

T R

T R

T R

2. Property Controlling
in Section

S T R

S T R

3. Miscellaneous
Property in Sec.

S T R

S T R

Register of Deeds Stamp & File Number

4. Lot No. , Recorded Plat

5. Private Claims

I, Dave Clifford, in a field survey on September 3, 1994, do hereby certify that under requirements of P.A. 74, Michigan P.A. of 1970, the corner points mentioned in lines 1 and 2 above were in conformance with regulations and rules therefore as required in the current manual of survey instructions of the United States Department of the Interior, Bureau of Land Management or by a decree of a Court of Law and/or that the corner points mentioned in lines 3, 4 and 5 above were in conformance with the rules of the Michigan Board of Land Surveyors or by a Decree of a Court of Law; established, re-established, monumented, re-monumented, recovered, found as expressed below:

NOTE: Not more than 4 corners, all in the same town and range, may be recorded on this certificate.

A. Description of original monument and accessories and/or subsequent restoration:

1. Original Post set by J. Wampler D.S. in Aug. 1824
B.O. 12 N61W 66(43.56')
W.O. 9 N26E 110 (72.6')

2. Corner used by A. Jackson Co. Surv. in June 1854 recorded in Vol 2 Page 206 with same mon. & Wit. as in item 1.

3. Corner Used by W.A. Rowe Co. Surveyor in Oct. 1895 recorded in Field book 15 page 26 in which he stated that he set a gas pipe for post based on proration of A. Jackson's survey. W.O. 30" N31 3/4°W 321 1(211.86')
W.O. 24" S88 3/4°E 453 1(299.31')

B. Description of corner evidence found and/or method applied in restoring or reestablishing corner:

Searched at apparent location of corner and found Anchor Post hole 195.36 feet East of D1 Stockbridge Township. Measured N32°W 211.9' to remains of W.A. Rowe's Oak witness (now badly deteriorated oak stump). Accepted post hole as corner because of agreement of both distances with Rowe's distances of 1895. Drove standard bar in post hole & capped with PA 345 cap.



C. Description of monument for corner and accessories established to perpetuate locating the position of the corner:

Set Standard 3/4" Steel Bar and PA 345 Cap PS #25837 in Anchor Post Hole At West-North Fence Corner

Set Nail & Tag#25837 in E. Side 10" Apple Naz 32° 14.31'
Set Nail & Tag#25837 in W. Side 6" Mult. Cherry Naz 340° 28.57'
Centerline 6" Steel Fence post (Guy post) Naz 270° 8.63
3/4" Bar & PA 345 Cap PS 25837(D-1, T1N,R2E) Naz 270° 195.36'

Signed by

Dave Clifford

Date November 8, 1994

Surveyor's Michigan License No.

25837

2743

FORM APPROVED BY MICHIGAN STATE BOARD OF LAND SURVEYORS, JAN. 28, 1978
REVISED MAY 14, 1978
REVISED JAN., 1981

P.A. 345 INGHAM COUNTY

PEER APPROVED 10/12/94

LAND CORNER RECORDATION CERTIFICATE

Filing Requirement of Act 74, Mich. P.A. 1970

For corners in

INGHAM

(County)

Located in:

Corner Code #

WHITE OAK TOWNSHIP.

1. Public Land Survey

T 2N R 2E

E-11

B: 13 P: 81 07/18/2007 09:01 AM
2007-031721 LAND CORNERS Receipt #29565
Paula Johnson, Ingham County, Michigan

Pages: 1



2. Property Controlling in Section

S

T

R

3. Miscellaneous Property in Sec.

S

T

R

4. Lot No.

Recorded Plat

5. Private Claims

Register of Deeds Stamp & File Number

	A	B	C	D	E	F	G	H	I	J	K	L	M
1													
2	6	5	4	3	2	1							
3													
4	7	8	9	10	11	12							
5													
6	18	17	16	15	14	13							
7													
8	19	20	21	22	23	24							
9													
10	30	29	28	27	26	25							
11													
12	31	32	33	34	35	36							
13													

I, DAVID R. LOHR, P.S., in a field survey on OCT. 19, 2006, do hereby certify that under requirements of P.A. 74, Michigan P.A. of 1970, the corner points mentioned in lines 1 and 2 above were in conformance with regulations and rules therefore as required in the current manual of survey instructions of the United States Department of the Interior, Bureau of Land Management or by a decree of a Court of Law and/or that the corner points mentioned in lines 3, 4 and 5 above were in conformance with the rules of the Michigan Board of Land Surveyors or by a Decree of a Court of Law; established, re-established, monumented, re-monumented, recovered, found as expressed below:

NOTE: Not more than 2 corners, all in the same town and range, may be recorded on this certificate.

A. Description of original monument and accessories and/or subsequent restoration:

- 1) CORNER SET BY JOSEPH WAMPLER, DEP. SURVEYOR, NOV. 1825. "N. BTW. 32 & 33, 80.00 CH. (5280.0') SET P., COR. OF 28, 29, 32 33., FW." WITNESSED BY: ASPEN 15", N 60-1/2 E, 16 LKS. (10.56') ASPEN 13", S 34 W, 8 LKS. (5.28') GLO NOTES SHOW A DISTANCE NORTH AND SOUTH OF 40 CH. (2640'), EAST OF 39.915 CH. (2634.39') AND WEST OF 40 CH. (2640').
- 2) NO CORNER REFERENCES FOUND IN THE RECORDS OF THE COUNTY SURVEYOR.
- 3) CORNER REFERENCED ON INGHAM COUNTY ROAD COMMISSION GRID MAP, DATED JANUARY 1969 AS: "IRON - 1968". WITNESSED BY: 10" BASSWOOD, ENE, 25.91' 8" BASSWOOD, WSW, 26.85' 6" & 8" BASSWOOD, SW, 84.31'
- 4) CORNER REFERENCED IN LCRC BY GEORGE M. YOUNG, RLS #17640, DATED 02/15/74 AND RECORDED IN LIBER 3, PAGE 193. PART A STATES: E-11, NO EVIDENCE OF ORIGINAL COR. FOUND. PART B STATES: E-11, FOUND 3/4" PIPE. PART C STATES: E-11, TIES TO PIPE: P.K.NAIL IN 18" WALNUT, N 87° E, 26.15' P.K.NAIL IN 12" WALNUT, W, 27.19' P.K.NAIL IN 8" WALNUT, E, 34.60'
- 5) CORNER REFERENCED IN SURVEYS BY GEORGE M. YOUNG, RLS #17640, DATED 02/15/74 AND RECORDED IN LIBER 1, PAGE 1133 AND LIBER 4, PAGE 48. "NORTHWEST CORNER, SECTION 33, (SOUTHEAST CORNER, SECTION 29) T2N, R2E, WHITE OAK TWP. SAME WITNESSES AS IN ITEM A-4 ABOVE. SURVEYS SHOW NO DISTANCES TO ADJACENT SECTION CORNERS.
- 6) CORNER REFERENCED IN SURVEY BY MAURICE H. MAHIEU, LLS #28414, DATED 10/27/88 AND RECORDED IN LIBER 5, PAGE 992. "SOUTHEAST CORNER, SECTION 29, T2N, R2E, WHITE OAK TWP. FOUND 3/4" PIPE, WITNESSED BY: SAME WITNESSES AS IN ITEM A-4 ABOVE. SURVEY SHOWS A DISTANCE WEST OF 2656.69' TO D-11 AND NORTH OF 2672.47' TO E-10.
- 7) NO OTHER REFERENCES FOUND.

B. Description of corner evidence found and/or method applied in restoring or reestablishing corner: SEARCHED AT APPARENT LOCATION OF CORNER AND FOUND 3/4" x 19" PIPE IN A MONUMENT BOX, WITH 2 RISER RINGS, 1 FT. EAST OF CENTERLINE OF DIETZ ROAD AND ON TREELINE/FENCELINE EAST AND WEST. EXCAVATED INTERIOR OF MONUMENT BOX TO DEPTH OF 36", FOUND NO ADDITIONAL EVIDENCE OF THE CORNER. TRAVERSED SECTION 32, MEASURED SOUTH 2659.24' TO E-12 AND WEST 2656.77' TO D-11. ACCEPTED FOUND PIPE AS BEST AVAILABLE EVIDENCE OF CORNER AND SET A STANDARD INGHAM COUNTY BAR & PA 345 CAP #30090.

C. Description of monument for corner and accessories established to perpetuate locating the position of the corner: E-11: T2N, R2E, WHITE OAK TOWNSHIP, INGHAM COUNTY. SET A STANDARD INGHAM COUNTY BAR & PA 345 CAP #30090 AT FOUND PIPE IN A MON. BOX. WITNESSED BY:

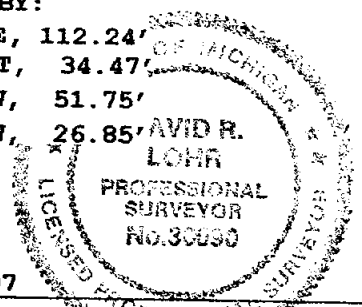
FOUND NAIL & TAG #25832 (L.BRYAN), EAST SIDE 18" BL. ASH, N 12° E, 112.24'
FOUND NAIL & TAG #25832 (L.BRYAN), SOUTH SIDE 14" WALNUT, DUE EAST, 34.47'
FOUND NAIL & TAG #25832 (L.BRYAN), EAST SIDE 7" MAPLE, S 25° W, 51.75'
FOUND NAIL & TAG #25832 (L.BRYAN), NORTH SIDE 17" MAPLE, S 85° W, 26.85'

Signed by

David R. Lohr

Date JULY 07, 2007

Surveyor's Michigan License No. 30090



FORM APPROVED BY MICHIGAN STATE BOARD OF LAND SURVEYORS, JAN. 1971
REVISED MAY 14, 1975
REVISED JAN. 1983
REVISED OCT. 1993
ADAPTED FOR WORD PROCESSING JAN. 1999

P.A. 345 INGHAM COUNTY
PEER APPROVED 6/19/2007 *W*

LAND CORNER RECORDATION CERTIFICATE

Filing Requirement of Act 74, Mich. P.A. 1970

For corners in
INGHAM
(County)

Located in:

Corner Code #

WHITE OAK TOWNSHIP.

1. Public Land Survey

T 2N R 2E

E-12

B: 13 P: 82 07/18/2007 09:01 AM
2007-031722 LAND CORNERS Receipt #29565
Paula Johnson, Ingham County, Michigan

Pages: 2

2. Property Controlling
in Section

S

T

R

3. Miscellaneous
Property in Sec.

S

T

R

4. Lot No.

Recorded Plat

5. Private Claims

Register of Deeds Stamp & File Number

	A	B	C	D	E	F	G	H	I	J	K	L	M
1													
2	6	5	4	3	2	1							
3													
4	7	8	9	10	11	12							
5													
6	18	17	16	15	14	13							
7													
8	19	20	21	22	23	24							
9													
10	30	29	28	27	26	25							
11													
12	31	32	33	34	35	36							
13													

I, DAVID R. LOHR, P.S., in a field survey on APRIL 04, 2007, do hereby certify that under requirements of P.A. 74, Michigan P.A. of 1970, the corner points mentioned in lines 1 and 2 above were in conformance with regulations and rules therefore as required in the current manual of survey instructions of the United States Department of the Interior, Bureau of Land Management or by a decree of a Court of Law and/or that the corner points mentioned in lines 3, 4 and 5 above were in conformance with the rules of the Michigan Board of Land Surveyors or by a Decree of a Court of Law, established, re-established, monumented, re-monumented, recovered, found as expressed below.

NOTE: Not more than 2 corners, all in the same town and range, may be recorded on this certificate.

A. Description of original monument and accessories and/or subsequent restoration:

1) CORNER SET BY JOSEPH WAMPLER, DEP. SURVEYOR, NOV. 1825. "N. BTW. 32 & 33, 40.00 CH. (2640.0') SET QR. SEC. P., FW." WITNESSED BY:
ASH 7", S 77 W, 12 LKS. (7.92')
M 6", N 49 W, 6 LKS. (3.96')
GLO NOTES SHOW A DISTANCE NORTH AND SOUTH OF 40 CH. (2640').

2) CORNER REFERENCED IN SURVEY BY A. JACKSON, CO. SURVEYOR, DATED JUNE 26, 1854 AND RECORDED IN BOOK 4, PAGE 361, COUNTY SURVEYORS RECORDS. NO MENTION OF MONUMENT. WITNESSED BY: ASH 7", S 77 W, 12 LKS. (7.92')
MAPLE 6", N 49 W, 6 LKS. (3.96')
SURVEY SHOWS A DISTANCE WEST OF 158 RODS-43.5 LKS. (2635.71').

3) CORNER REFERENCED ON INGHAM COUNTY ROAD COMMISSION GRID MAP, DATED JANUARY 1969 AS: "IRON - 1968". WITNESSED BY: 36" OAK, NW, 156.71' GONE
P.P., SE, 46.56' GONE
28" HICKORY, NNW, 25.59' GONE

CONTINUED ON PAGE 2:

B. Description of corner evidence found and/or method applied in restoring or reestablishing corner:

SEARCHED AT APPARENT LOCATION OF CORNER AND FOUND 3/4" X 16" PIPE IN BIT. PAVEMENT, ON CENTERLINE OF DIETZ AND SWAN ROADS. EXCAVATED TO FIND DECAYED REMAINS OF WOOD STAKE WITH BRICK AND CHINA AT DEPTH OF 27", ALL SET IN BLACK ORGANIC TOPSOIL. EXCAVATED THRU 6" OF TOPSOIL TO GRAY CLAY AT 33". EXCAVATED TO 44", FOUND NO OTHER EVIDENCE. ACCEPTED FOUND PIPE & STAKE AS CORNER AND SET A STANDARD INGHAM COUNTY 3/4" X 24" REMON. BAR & PA 345 CAP #30090 IN A NEW MONUMENT BOX. TRAVERSED SECTION 32, MEASURED WEST 2652.33' TO REMONUMENTED D-12, NORTH 2659.24' TO E-11 AND SOUTH **2659.68' TO E-13.
(** DATA FROM STOCKBRIDGE TRAVERSE BY DAVID L. CLIFFORD, P.S. #25837)

C. Description of monument for corner and accessories established to perpetuate locating the position of the corner:

E-12: T2N, R2E, WHITE OAK TOWNSHIP, INGHAM COUNTY. SET A STANDARD INGHAM COUNTY BAR & PA 345 CAP #30090 AT FOUND PIPE, BRICK, CHINA & DECAYED STAKE. WITNESSED BY:
FOUND NAIL & TAG #25832 (L.BRYAN), SOUTHEAST SIDE 36" HICKORY, S 58° W, 50.95'
FOUND NAIL & TAG #25832 (L.BRYAN), SOUTH SIDE 6" POST, DUE WEST, 30.26'
FOUND NAIL & TAG #25832 (L.BRYAN), TOP OF STUB POLE, N 28° E, 49.55'
SET 1/2" REBAR & CAP #30090, S 39° E, 40.55'

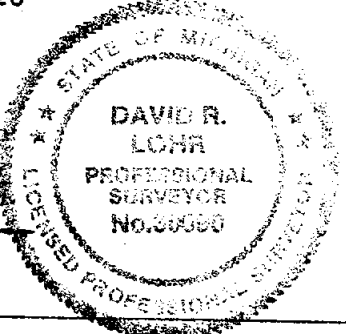
P.A. 345 INGHAM COUNTY
PEER APPROVED 6/19/2007

Date JULY 07, 2007

Signed by

David R. Lohr

Surveyor's Michigan License No. 30090



E-12: T2N, R2E, WHITE OAK TOWNSHIP, INGHAM COUNTY. PAGE 2: PART A CONTINUED:

- 4) CORNER REFERENCED IN LCRC BY GEORGE M. YOUNG, RLS #17640, DATED 02/15/74 AND RECORDED IN LIBER 3, PAGE 193.
PART A STATES: E-12, NO EVIDENCE OF ORIGINAL COR. FOUND.
PART B STATES: E-12, FOUND 3/4" PIPE.
PART C STATES: E-12, TIES TO PIPE: SPIKE IN P.P., N 20° E, 49.63' GONE
NAIL IN 24" HICKORY, S 45° W, 51.46' STANDING
EDGE OF ASPHALT, WEST, 10.4'
- 5) CORNER REFERENCED IN SURVEY BY GEORGE M. YOUNG, RLS #17640, DATED 02/15/74 AND RECORDED IN LIBER 1, PAGE 1133. "WEST 1/4 POST, SECTION 33, T2N, R2E, WHITE OAK TWP. FOUND 3/4" PIPE FLUSH WITH ASPHALT." SAME WITNESSES AS IN ITEM A-4 ABOVE. SURVEY SHOWS NO DISTANCES TO ADJACENT SECTION CORNERS.
- 6) CORNER REFERENCED IN SURVEY BY RONALD L. ENGER, LPS #28409, DATED 10/05/01 AND RECORDED IN LIBER 8, PAGE 934. "EAST 1/4 CORNER, SECTION 32, T2N, R2E, WHITE OAK TWP. FOUND 3/4" PIPE, WITNESSED BY: SAME WITNESSES AS IN ITEM A-4 ABOVE. SURVEY SHOWS A DISTANCE SOUTH OF 2659.48' TO E-12.
- 7) NO OTHER REFERENCES FOUND.

SURVEY & REMONUMENTATION
APR 10 1995
COMMISSION

LIBER 8 PAGE 385

FILED

DEC 1 8 05 AM '94

LAND CORNER RECORDATION CERTIFICATE
Filing Requirement of Act 74, Mich. P.A. 1970

REGISTER OF DEEDS
INGHAM COUNTY, MICH.

For corners in

INGHAM COUNTY
(County)
WHITE OAK TOWNSHIP
1. Public Land Survey
Located In: T 2N R 2E E 13
Corner Code #:
T R
T R
T R
T R
2. Property Controlling S T R
In Section S T R
3. Miscellaneous S T R
Property In Sec. S T R
4. Lot No. , Recorded Plat
5. Private Claims

Register of Deeds Stamp & File Number

I, Dave Clifford, in a field survey on Sep. 3, 1994, do hereby certify that under requirements of P.A. 74, Michigan P.A. of 1970, the corner points mentioned in lines 1 and 2 above were in conformance with regulations and rules therefore as required in the current manual of survey instructions of the United States Department of the Interior, Bureau of Land Management or by a decree of a Court of Law and/or that the corner points mentioned in lines 3, 4 and 5 above were in conformance with the rules of the Michigan Board of Land Surveyors or by a Decree of a Court of Law, established, re-established, monumented, re-monumented, recovered, found as expressed below:

NOTE: Not more than 4 corners, all in the same town and range, may be recorded on this certificate.

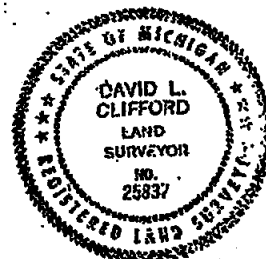
A. Description of original monument and accessories and/or subsequent restoration:

1. Original Post set by J. Wampler D.S. in Aug. 1824
Tam. 5 N58E 17(11.22')
Tam. 6 N43W 38(25.08')
2. Corner used by A. Jackson Co. Surv. in June 1854 recorded in Vol 2 Page 206 with same mon. & Wit. as in item 1.
3. Corner Used by W.A. Rowe Co. Surveyor in Oct. 1895 recorded in Field book 15 page 26 in which he stated that he found the old post.

(OVER)

B. Description of corner evidence found and/or method applied in restoring or reestablishing corner:

Searched at apparent location of corner and found 1 1/2" pipe at South base of North-East fence corner post. Excavated all around fence post and found nothing but average fence post stones. Measured West 195.36 feet (the exact GLO falling) to E-1 Stockbridge Township (a 1 1/2" pipe at the North end of a fence to the South). Accepted Pipe as perpetuation of corner because of its relationship to occupation and closing corner and capped with PA345 cap.



C. Description of monument for corner and accessories established to perpetuate locating the position of the corner:

1 1/2" Iron Pipe and PA 345 Cap PS #25837 at South base of Anchor Post. at East-North Fence Corner

Set Nail & Tag#25837 in N. Side 8" Maple Naz 240° 31.55'
Set Nail & Tag#25837 in W. Side 18" Trip. Maple Naz 170° 32.15'
Set Nail & Tag#25837 in N. Side 18" Maple Naz 100° 31.90'
1 1/2" Pipe & PA 345 Cap PS 25837(E-1, T1N, R2E) Naz 270° 195.36'

Signed by Dave Clifford Date Oct 11, 1994

Surveyor's Michigan License No. 25837

P.A. 345 INGHAM COUNTY

FORM APPROVED BY MICHIGAN STATE BOARD OF LAND SURVEYORS, JAN. 1975
REVISED MAY 1975

E-13

A., (Continued from front side)

- 24" Maple East 17.55'
Triple 15" Maple S10E 32.45'
24" Maple N70W 28.90'
1½" Iron Pipe (E-1, T1N, R2E) West 195.36'

2746