

LAND CORNER RECORDATION CERTIFICATE

Filing Requirement of Act 74, Mich. P.A. 1970

For corners in

INGHAM

(County)

Located in:

Corner Code #

WHITE OAK TOWNSHIP.

1. Public Land Survey

T 2N R 2E

E-11

B: 13 P: 81 07/18/2007 09:01 AM

Pages: 1

2007-031721 LAND CORNERS Receipt #29565
Paula Johnson, Ingham County, Michigan



2. Property Controlling
in Section

S T R

3. Miscellaneous
Property in Sec.

S T R

4. Lot No. Recorded Plat

5. Private Claims

Register of Deeds Stamp & File Number

	A	B	C	D	E	F	G	H	I	J	K	L	M
1													
2	6	5	4	3	2	1							
3													
4	7	8	9	10	11	12							
5													
6	18	17	16	15	14	13							
7													
8	19	20	21	22	23	24							
9													
10	30	29	28	27	26	25							
11													
12	31	32	33	34	35	36							
13													

I, DAVID R. LOHR, P.S., in a field survey on OCT. 19, 2006, do hereby certify that under requirements of P.A. 74, Michigan P.A. of 1970, the corner points mentioned in lines 1 and 2 above were in conformance with regulations and rules therefore as required in the current manual of survey instructions of the United States Department of the Interior, Bureau of Land Management or by a decree of a Court of Law and/or that the corner points mentioned in lines 3, 4 and 5 above were in conformance with the rules of the Michigan Board of Land Surveyors or by a Decree of a Court of Law; established, re-established, monumented, re-monumented, recovered, found as expressed below.

NOTE: Not more than 2 corners, all in the same town and range, may be recorded on this certificate.

A. Description of original monument and accessories and/or subsequent restoration:

1) CORNER SET BY JOSEPH WAMPLER, DEP. SURVEYOR, NOV.

1825. "N. BTW. 32 & 33, 80.00 CH. (5280.0') SET P., COR. OF 28, 29, 32 33., FW."

WITNESSED BY: ASPEN 15", N 60-1/2 E, 16 LKS. (10.56')

ASPEN 13", S 34 W, 8 LKS. (5.28')

GLO NOTES SHOW A DISTANCE NORTH AND SOUTH OF 40 CH. (2640'), EAST OF 39.915 CH. (2634.39') AND WEST OF 40 CH. (2640').

2) NO CORNER REFERENCES FOUND IN THE RECORDS OF THE COUNTY SURVEYOR.

3) CORNER REFERENCED ON INGHAM COUNTY ROAD COMMISSION GRID MAP, DATED JANUARY 1969 AS: "IRON - 1968". WITNESSED BY:

10" BASSWOOD, ENE, 25.91'

8" BASSWOOD, WSW, 26.85'

6" & 8" BASSWOOD, SW, 84.31'

4) CORNER REFERENCED IN LCRC BY GEORGE M. YOUNG, RLS #17640, DATED 02/15/74 AND RECORDED IN LIBER 3, PAGE 193.

PART A STATES: E-11, NO EVIDENCE OF ORIGINAL COR. FOUND.

PART B STATES: E-11, FOUND 3/4" PIPE.

PART C STATES: E-11, TIES TO PIPE: P.K.NAIL IN 18" WALNUT, N 87° E, 26.15'

P.K.NAIL IN 12" WALNUT, W, 27.19'

P.K.NAIL IN 8" WALNUT, E, 34.60'

5) CORNER REFERENCED IN SURVEYS BY GEORGE M. YOUNG, RLS #17640, DATED 02/15/74 AND RECORDED IN LIBER 1, PAGE 1133 AND LIBER 4, PAGE 48. "NORTHWEST CORNER, SECTION 33, (SOUTHEAST CORNER, SECTION 29) T2N, R2E, WHITE OAK TWP. SAME WITNESSES AS IN ITEM A-4 ABOVE. SURVEYS SHOW NO DISTANCES TO ADJACENT SECTION CORNERS.

6) CORNER REFERENCED IN SURVEY BY MAURICE H. MAHIEU, LLS #28414, DATED 10/27/88 AND RECORDED IN LIBER 5, PAGE 992. "SOUTHEAST CORNER, SECTION 29, T2N, R2E, WHITE OAK TWP. FOUND 3/4" PIPE, WITNESSED BY: SAME WITNESSES AS IN ITEM A-4 ABOVE. SURVEY SHOWS A DISTANCE WEST OF 2656.69' TO D-11 AND NORTH OF 2672.47' TO E-10.

7) NO OTHER REFERENCES FOUND.

B. Description of corner evidence found and/or method applied in restoring or reestablishing corner:

SEARCHED AT APPARENT LOCATION OF CORNER AND FOUND 3/4" x 19" PIPE IN A MONUMENT BOX, WITH 2 RISER RINGS, 1 FT. EAST OF CENTERLINE OF DIETZ ROAD AND ON TREELINE/FENCELINE EAST AND WEST. EXCAVATED INTERIOR OF MONUMENT BOX TO DEPTH OF 36", FOUND NO ADDITIONAL EVIDENCE OF THE CORNER. TRAVERSED SECTION 32, MEASURED SOUTH 2659.24' TO E-12 AND WEST 2656.77' TO D-11. ACCEPTED FOUND PIPE AS BEST AVAILABLE EVIDENCE OF CORNER AND SET A STANDARD INGHAM COUNTY BAR & PA 345 CAP #30090.

C. Description of monument for corner and accessories established to perpetuate locating the position of the corner:

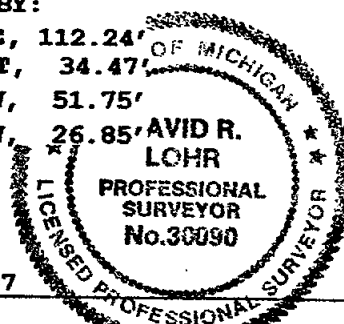
E-11: T2N, R2E, WHITE OAK TOWNSHIP, INGHAM COUNTY. SET A STANDARD INGHAM COUNTY BAR & PA 345 CAP #30090 AT FOUND PIPE IN A MON. BOX. WITNESSED BY:

FOUND NAIL & TAG #25832 (L.BRYAN), EAST SIDE 18" BL. ASH, N 12° E, 112.24'

FOUND NAIL & TAG #25832 (L.BRYAN), SOUTH SIDE 14" WALNUT, DUE EAST, 34.47'

FOUND NAIL & TAG #25832 (L.BRYAN), EAST SIDE 7" MAPLE, S 25° W, 51.75'

FOUND NAIL & TAG #25832 (L.BRYAN), NORTH SIDE 17" MAPLE, S 85° W, 26.85'



Signed by

David R. Lohr

Date JULY 07, 2007

Surveyor's Michigan License No. 30090

FORM APPROVED BY MICHIGAN STATE BOARD OF LAND SURVEYORS, JAN. 1971
REVISED MAY 14, 1975
REVISED JAN. 1983
REVISED OCT. 1995
ADAPTED FOR WORD PROCESSING JAN. 1999

P.A. 345 INGHAM COUNTY
PEER APPROVED 6/19/2007 AL

LAND CORNER RECORDATION CERTIFICATE

Filing Requirement of Act 74, Mich. P.A. 1970

For corners in

INGHAM

(County)

Located In:

Corner Code #

WHITE OAK TOWNSHIP.

1. Public Land Survey

T 2N R 2E

E-12

T R

T R

T R

T R

T R

T R

T R

T R

2. Property Controlling in Section

S

T

R

3. Miscellaneous Property in Sec.

S

T

R

4. Lot No.

Recorded Plat

5. Private Claims

B: 13 P: 82 07/18/2007 09:01 AM

Pages: 2

2007-031722 LAND CORNERS Receipt #28565
Paula Johnson, Ingham County, Michigan



Register of Deeds Stamp & File Number

	A	B	C	D	E	F	G	H	I	J	K	L	M
1													
2	6	5	4	3	2	1							
3													
4	7	8	9	10	11	12							
5													
6	18	17	16	15	14	13							
7													
8	19	20	21	22	23	24							
9													
10	30	29	28	27	26	25							
11													
12	31	32	33	34	35	36							
13													

I, DAVID R. LOHR, P.S., in a field survey on APRIL 04, 2007, do hereby certify that under requirements of P.A. 74, Michigan P.A. of 1970, the corner points mentioned in lines 1 and 2 above were in conformance with regulations and rules therefore as required in the current manual of survey instructions of the United States Department of the Interior, Bureau of Land Management or by a decree of a Court of Law and/or that the corner points mentioned in lines 3, 4 and 5 above were in conformance with the rules of the Michigan Board of Land Surveyors or by a Decree of a Court of Law; established, re-established, monumented, re-monumented, recovered, found as expressed below:

NOTE: Not more than 2 corners, all in the same town and range, may be recorded on this certificate.

A. Description of original monument and accessories and/or subsequent restoration:

1) CORNER SET BY JOSEPH WAMPLER, DEP. SURVEYOR, NOV.

1825. "N. BTW. 32 & 33, 40.00 CH. (2640.0') SET OR. SEC. P., FW." WITNESSED BY:

ASH 7", S 77 W, 12 LKS. (7.92')

M 6", N 49 W, 6 LKS. (3.96')

GLO NOTES SHOW A DISTANCE NORTH AND SOUTH OF 40 CH. (2640').

2) CORNER REFERENCED IN SURVEY BY A. JACKSON, CO. SURVEYOR, DATED JUNE 26, 1854 AND RECORDED IN BOOK 4, PAGE 361, COUNTY SURVEYORS RECORDS. NO MENTION OF MONUMENT. WITNESSED BY: ASH 7", S 77 W, 12 LKS. (7.92')

MAPLE 6", N 49 W, 6 LKS. (3.96')

SURVEY SHOWS A DISTANCE WEST OF 158 RODS-43.5 LKS. (2635.71').

3) CORNER REFERENCED ON INGHAM COUNTY ROAD COMMISSION GRID MAP, DATED JANUARY 1969 AS:

"IRON - 1968". WITNESSED BY: 36" OAK, NW, 156.71' GONE
P.P., SE, 46.56' GONE
28" HICKORY, NNW, 25.59' GONE

CONTINUED ON PAGE 2:

B. Description of corner evidence found and/or method applied in restoring or reestablishing corner:

SEARCHED AT APPARENT LOCATION OF CORNER AND FOUND 3/4" X 16" PIPE IN BIT. PAVEMENT, ON CENTERLINE OF DIETZ AND SWAN ROADS. EXCAVATED TO FIND DECAYED REMAINS OF WOOD STAKE WITH BRICK AND CHINA AT DEPTH OF 27", ALL SET IN BLACK ORGANIC TOPSOIL. EXCAVATED THRU 6" OF TOPSOIL TO GRAY CLAY AT 33". EXCAVATED TO 44", FOUND NO OTHER EVIDENCE. ACCEPTED FOUND PIPE & STAKE AS CORNER AND SET A STANDARD INGHAM COUNTY 3/4" X 24" REMON. BAR & PA 345 CAP #30090 IN A NEW MONUMENT BOX. TRAVERSED SECTION 32, MEASURED WEST 2652.33' TO REMONUMENTED D-12, NORTH 2659.24' TO E-11 AND SOUTH **2659.68' TO E-13.

(** DATA FROM STOCKBRIDGE TRAVERSE BY DAVID L. CLIFFORD, P.S. #25837)

C. Description of monument for corner and accessories established to perpetuate locating the position of the corner:

E-12: T2N, R2E, WHITE OAK TOWNSHIP, INGHAM COUNTY. SET A STANDARD INGHAM COUNTY BAR & PA 345 CAP #30090 AT FOUND PIPE, BRICK, CHINA & DECAYED STAKE. WITNESSED BY:

FOUND NAIL & TAG #25832 (L.BRYAN), SOUTHEAST SIDE 36" HICKORY, S 58° W, 50.95'

FOUND NAIL & TAG #25832 (L.BRYAN), SOUTH SIDE 6" POST, DUE WEST, 30.26'

FOUND NAIL & TAG #25832 (L.BRYAN), TOP OF STUB POLE, N 28° E, 49.55'

SET 1/2" REBAR & CAP #30090, S 39° E, 40.55'

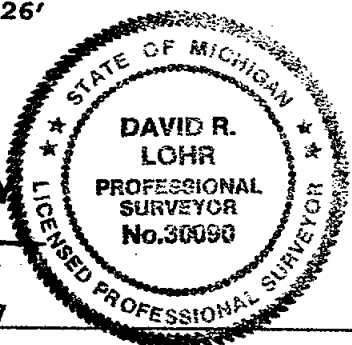
P.A. 345 INGHAM COUNTY
PEER APPROVED 6/19/2007

Signed by

David R. Lohr

Date JULY 07, 2007

Surveyor's Michigan License No. 30090



FORM APPROVED BY MICHIGAN STATE BOARD OF LAND SURVEYORS, JAN. 1971

REVISED MAY 14, 1975

REVISED JAN. 1983

REVISED OCT. 1995

ADAPTED FOR WORD PROCESSING JAN. 1999

E-12: T2N, R2E, WHITE OAK TOWNSHIP, INGHAM COUNTY. PAGE 2: PART A CONTINUED:

- 4) CORNER REFERENCED IN LCRC BY GEORGE M. YOUNG, RLS #17640, DATED 02/15/74 AND RECORDED IN LIBER 3, PAGE 193.
PART A STATES: E-12, NO EVIDENCE OF ORIGINAL COR. FOUND.
PART B STATES: E-12, FOUND 3/4" PIPE.
PART C STATES: E-12, TIES TO PIPE: SPIKE IN P.P., N 20° E, 49.63' GONE
NAIL IN 24" HICKORY, S 45° W, 51.46' STANDING
EDGE OF ASPHALT, WEST, 10.4'
- 5) CORNER REFERENCED IN SURVEY BY GEORGE M. YOUNG, RLS #17640, DATED 02/15/74 AND RECORDED IN LIBER 1, PAGE 1133. "WEST 1/4 POST, SECTION 33, T2N, R2E, WHITE OAK TWP. FOUND 3/4" PIPE FLUSH WITH ASPHALT." SAME WITNESSES AS IN ITEM A-4 ABOVE. SURVEY SHOWS NO DISTANCES TO ADJACENT SECTION CORNERS.
- 6) CORNER REFERENCED IN SURVEY BY RONALD L. ENGER, LPS #28409, DATED 10/05/01 AND RECORDED IN LIBER 8, PAGE 934. "EAST 1/4 CORNER, SECTION 32, T2N, R2E, WHITE OAK TWP. FOUND 3/4" PIPE, WITNESSED BY: SAME WITNESSES AS IN ITEM A-4 ABOVE. SURVEY SHOWS A DISTANCE SOUTH OF 2659.48' TO E-12.
- 7) NO OTHER REFERENCES FOUND.

LAND CORNER RECORDATION CERTIFICATE
Filing Requirement of Act 74, Mich. P.A. 1970

For corners in WHITE OAK TOWNSHIP

INGHAM COUNTY

Located In:

Corner Code #

1. Public Land Survey

T 2N R 2E

F-11

2. Property Controlling
in Section

S

T R

3. Miscellaneous
Property in Sec.

S

T R

B: 13 P: 106 07/31/2007 08:22 AM
2007-033645 LAND CORNERS Receipt #30093
Paula Johnson, Ingham County, Michigan

Pages: 2



Register of Deeds Stamp & File Number

4. Lot No. , Recorded Plat

5. Private Claims

I, Maurice H. Mahieu, in a field survey on March 19, 2007, do hereby state that under requirements of P.A. 74, Michigan P.A. of 1970, the corner points mentioned in lines 1 and 2 above were in conformance with regulations and rules therefore as required in the current manual of survey instructions of the United States Department of the Interior, Bureau of Land Management or by a decree of a Court of Law and/or that the corner points mentioned in lines 3, 4 and 5 above were in conformance with the rules of the Michigan Board of Land Surveyors or by a Decree of a Court of Law; established, re-established, monumented, recovered, found as expressed below:

NOTE: Not more than 2 corners, all in the same town and range, may be recorded on this certificate.

A. Description of original monument and accessories and/or subsequent restoration:

1. Original GLO survey by Joseph Wampler D.S., November 30, 1825

notes:

39.91 1/2 (2634.39') set 1/4 section post at average distance; from which
Elm 8 in bears S89W 18 1/2 lk
White Oak 36 in bears N73E 12 lk

2. Corner used by A. Jackson, Ingham County Surveyor in a survey dated October 24, 1846. Ingham County Records (V.1, P.206)(V.4, P.185)(Folder 2 Page 39B) witnessed by: White Oak 34 N63E 12, Elm 8 S89W 18 1/2. No mention of monumentation. Measured 160.40 (2646.60') to F-10.

(Continued on back)

B. Description of corner evidence found or method applied in restoring or reestablishing corner:

Found 1/2" rod and unreadable cap at southwest corner of wood lot in old north-south wire fence. Excavated 1'x1'x1' hole at location of found iron on south side of fence post. Found no further evidence. Fence post is believed to be perpetuation of location of Yokum stone position as accepted by G. Young and this surveyor. Replaced 1/2" iron with 3/4" x 24" smooth iron rod and 2 1/4" aluminum cap stamped PA 345, PS 28414. Measured 2653.30 feet to E-11 and 2665.22' to G-11.

C. Description of monument for corner and accessories established to perpetuate locating the position of the corner:

Replaced found 1/2" rod with 3/4" x 24" smooth iron rod and 2 1/4" cap stamped PA 345, PS 28414.

Witnessed by:

Found nail and tag #28414 south side 15" Ash N35°E 22.25 feet

Found nail and tag #28414 west side 8" Maple N10°E 11.43 feet

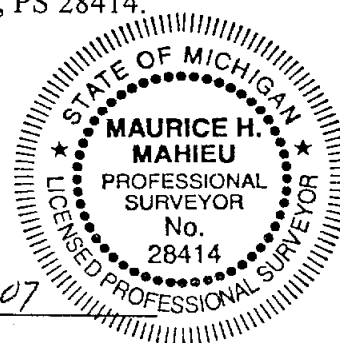
Found nail and tag #28414 south side 8" Maple N40°E 12.18 feet

Found nail and tag #28414 south side 8" Ash N45°E 18.75 feet

Signed by

Maurice H. Mahieu
Maurice H. Mahieu

Date 7-05-07



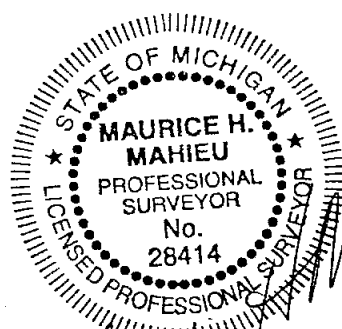
Surveyor's Michigan License No. 28414

P.A. 345 INGHAM COUNTY
PEER APPROVED 6/19/2007 m

FORM APPROVED BY MICHIGAN STATE BOARD OF PROFESSIONAL
SURVEYORS, JAN. 28, 1971 REVISED MAY 14, 1975

REVISED JAN., 1983
REVISED OCT., 1995

3. Corner used by A. Jackson, Ingham County Surveyor in a survey dated January 14, 1855. Ingham County Records (V.2, P.243) (folder 2, P. 41a) witnessed by White Oak 34 N66E 12; Elm 8 S89W 18½. No mention of monumentation. Measured 40.16; 160r16 (2650.56') to G-11 and 160r3 (2641.98') to F-12.
4. Corner used by John R. Yokum, Washtenaw County Surveyor in a survey dated 1878. Stone; Hick-16-N61W-44.2'; Hick-14-S66W-42.8'.
5. Corner used by John McCreary, Ingham County Surveyor in an undated survey. 1/4 post on S side 28 Elm 8 S89W 18½ WO 36 N73E 12. No mention of monumentation.
6. Corner used by Zimmer & Zickgraf, Engineers in a survey of the Oakley Drain dated April 1, 1918. described as "Thence over and across th NE 1/4 of the NW 1/4 section 33, Town and Range aforesaid, Maynard C.. Hodge and wife Nellie J. Hodge, owners, commencing in the S line of said lands at a point 727 ft. E of the SW corner thereof, thence N60E 337 ft., thence N12W 124 ft., thence N31 1/4E 315 ft., thence N13 3/4W 185 ft., thence N3 1/4W 284 ft., thence N40 1/4E 116 ft., thence N45 1/4E 173 ft., thence N34½E 100 ft. to station 88 plus 73 ft. in the N line of said lands at a point 238 ft W of the NE corner thereof. Total length of said drain on said lands is 1634 ft. Thence over and across the E ½ of th SW 1/4 section 28. Town and Range aforesaid, George M. Thompson, owner, commencing in the S line of said lands at a point 238 ft. W of the SE corner, therof, thence N34½E 55 ft., thence N41 1/4E 302 ft. to station 92 plus 32 ft. in the E line of said lands at a point 259 ft. N of the SE corner thereof. Total length of said drain on said lands is 359 ft." No mention of monumentation or witnesses.
7. An Act 132 survey by George Young P.S. 17640 in Liber 3 Page 162 recorded on December 12, 1977; states "found anchor post. Set ½" x 18" steel rod beside." Witnesses: #16 nail & cap in 6" maple N05E 18.6'; #16 nail & cap in 6" maple N50E 6.2'; #16 nail & cap in 12" maple N50W 4.5'. Measured 2672.64' to F-10.
8. An Act 74 LCRC by George Young P.S. 17640 in Liber 4 Page 212 recorded on June 20, 1978 Part B states "found anchor post. Set ½" x 18" re-rod beside it." Part C states "nail & cap 6" maple N05E 18.60'; nail & cap 6" maple N50E 6.20'; nail & cap 12" maple N50W 4.50".
9. An Act 132 survey by Maurice Mahieu P.S. 28414 in Liber 8 Page 824 recorded on March 27, 2001. States "½" iron rod S. side wood anchor post at SW corner wood lot". Witnesses: N&T #28414 S. side 12" Ash, N35E 22.25'; N&T #28414 W. side 6" Maple, N10E 11.60'; N&T #28414 S. side 4" Maple, N40E 12.31'; N&T #28414 S. side 4" Ash, N45E 18.81'. Measured 2673.31' to F-10.
10. An unrecorded survey by Maurice Mahieu P.S. 28414 on May 25, 2001. States "½" iron rod S. side wood anchor post at SW corner wood lot". Witnesses: N&T #28414 S. side 12" Ash, N35E 22.25'; N&T #28414 W. side 6" Maple, N10E 11.60'; N&T #28414 S. side 4" Maple, N40E 12.31'; N&T #28414 S. side 4" Ash, N45E 18.81. Measured 2665.80' to G-11 and 2673.30' to F-10.



Maurice H. Mahieu

LAND CORNER RECORDATION CERTIFICATE
Filing Requirement of Act 74, Mich. P.A. 1970

For corners in WHITE OAK TOWNSHIP

INGHAM COUNTY

Located In:

Corner Code #

1. Public Land Survey

T 2N R 2E

F-12

T R

T R

T R

2. Property Controlling
in Section

S

T R

S

T R

3. Miscellaneous
Property in Sec.

S

T R

S

T R

B: 13 P: 110 07/31/2007 08:22 AM
2007-033649 LAND CORNERS Receipt #30093
Paula Johnson, Ingham County, Michigan

Pages: 2



Register of Deeds Stamp & File Number

4. Lot No. , Recorded Plat

5. Private Claims

I, Maurice H. Mahieu, in a field survey on March 19, 2007, do hereby state that under requirements of P.A. 74, Michigan P.A. of 1970, the corner points mentioned in lines 1 and 2 above were in conformance with regulations and rules therefore as required in the current manual of survey instructions of the United States Department of the Interior, Bureau of Land Management or by a decree of a Court of Law and/or that the corner points mentioned in lines 3, 4 and 5 above were in conformance with the rules of the Michigan Board of Land Surveyors or by a Decree of a Court of Law; established, re-established, monumented, recovered, found as expressed below:

NOTE: Not more than 2 corners, all in the same town and range, may be recorded on this certificate.

A. Description of original monument and accessories and/or subsequent restoration:

1. Corner not set in original GLO survey.

2. Corner used by A. Jackson, Ingham County Surveyor in a survey dated September 10, 1838. Ingham County Records (V.1, P.147)(V.4, P.142) witnessed by: R Oak 20 in S50W 39 lks; Poplar 10 in S38E 33 lks. No mention of monumentation.

(Continued on back)

B. Description of corner evidence found or method applied in restoring or reestablishing corner:

Found 4" concrete monument at centerline of Swan and Oakley Roads (bituminous). No excavation due to previous work at corner by previous remonumentation program. Placed adjustment ring and cap around monument. Tree line to north and corner is in a cut area of road. Accepted position of corner based on previous work by Gary Lester. Measured 2654.75' to F-11, 2655.04' to G-12, 2658.07' to F-13, 2648.87' to E-12. Found monument is 3.59' south and 0.98' west of intersection of right lines to 1/4 corners.

C. Description of monument for corner and accessories established to perpetuate locating the position of the corner:

Found 4" monument and set 2 1/4" aluminum cap stamped PA345 PS 28414 on top in monument box ring. Witnessed by:

Found nail and tag #25832 (Larry Bryan) southeast side leaning fence post N18°E 26.26 feet

Found nail and tag #25832 northeast side 15" Apple, S53°E 49.29 feet

Found nail and tag #18998 northeast side 18" Oak S50°E 58.50 feet

Found nail and tag #25832 north side 21" Hickory S77°E 116.29 feet

Set remon nail and tag west side 10" Ash S16°E 102.49 feet.

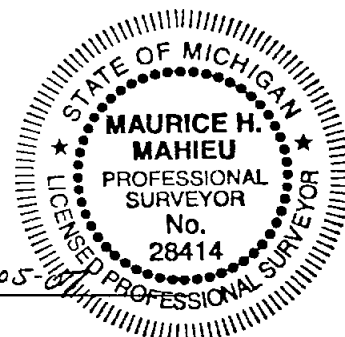
Signed by

Maurice H. Mahieu

Date

7-05-07

Surveyor's Michigan License No. 28414



3. Corner used by A. Jackson, Ingham County Surveyor in a survey dated January 14, 1855. Ingham County Records (V.2, P. 243) (Folder 2 P. 41A) witnessed by: W Oak 32 N42E 94; R Oak 8 N68E 91. No mention of monumentation. Measured 40.03, 160r3(2641.98') to F-11.
4. Corner used by A. Jackson, Ingham County Surveyor in a survey dated October 16, 1889. Ingham County Records Folder 2 P. 41B witnessed by: W Oak 12 S45W 1 1/8. No mention of monumentation.
5. Corner used by John R. Yokum, Washtenaw County Surveyor in a survey dated 1878, private records. Stone, Witnesses Hick 16 N61W 67; Hick 14 S66W 65; Hick 12 N42W 65.3; Hick 12 N74W 44.8.
6. Corner used in an undated survey of the Proestal Drain. Described as "Thence over and across the NW 1/4 of the SE 1/4, section 33, Town and Range aforesaid, F. D. Clark, owner, commencing in the W line thereof at a point 523 ft. S of the NW corner thereof, thence S82 1/4E 40 ft. to station 12 plus 00ft., the upper terminus of said drain at a point 39 ft. E and 530 ft. S of the center of said section 33, Town and Range aforesaid. Total length of said drain on said lands is 40 ft. No mention of monumentation or witnesses.
7. Corner used in a undated survey of the Leroy and White Oak drain. Described as "Thence on the W 1/2 of NE 1/4 of sec. 33, M. Dewitt, Owner, S11 1/2W 8.05 chs, thence S22E 5.95chs, thence S5E 11.45 chs, thence S25W 6.80 chs, thence S51 1/2W 3.40 chs, thence S13 1/2E 1.80 chs, thence S27 1/2E 6.50 chs, thence S23 1/2W .80 chs to the S line of said lands at a point 9.55chs E of the center post of Sec. 33. Total length of drain on said lands is 42.75chs. Thence on the W 1/2 of SE 1/4 of Sec. 33, August Schnehaskie, Owner, S23 1/2W 1.04 chs, thence S54 1/2W 10.51 chs to the W line of said lands at a point 7.28 chs S of the center of Sec. 33. Total length of drain on said lands is 11.55 chs. Thence on the N 1/2 of SW 1/4 of Sec. 33, Thomas Baker, Owner, S52 1/2W 4.45 chs to the S line of said lands at a point 3.59 chs W and 10 chs S of center of Sec. 33." No mention of monumentation or witnesses.
8. A MDSHT Witness Form 280 by Stephens Engineering dated November 2, 1968, Iron, set nails & ribbon used for ties: 14" basswood NW 25.59'; 16" hickory NW 43.42'; 16" oak SW 119.63'; NW corner 2 st. fr. House SE 153.35'.
9. Ingham County Road Commission grid map dated January 1, 1969 states; "iron (1968) 16" Oak WSW 119.63'; 16" hickory WNW 43.42'; 14" Basswood NNW 25.59'".
10. An Act 74 LCRC by Gary Lester P.S. 17624 in Liber 5 Page 270 recorded on August 2, 1979. Part B states "Excavated a hole 10' x 10' to an average depth of 1.6' at the intersection of the centerline of Swan and Oakley Roads and fence/tree line north. Found 5/8" iron at road surface, at the intersection of Swan and Oakley Roads. No other monumentation found. Measured west +/- 2648.0' to E-12 and +/- 2656.0' east to G-12. Location of irons is in close accord with the witnesses as given in the records of the Ingham County Road Commission and MDSHT form 280. Accepted iron for corner. Excavation conducted by Ingham County Survey and Remonumentation Project crews." Part C states "Set 4" x 36" concrete monument with 1/2" x 38" rerod and cap #18998 with concrete collar and cover in location of iron described above: Nail & tag #18998, NW corner fence post, SW 38.57'; Nail & tag #18998 SW side 12" Hickory NW 43.10'; Nail & tag #18998 east side 12" Ash North 25.67'; Nail & tag #18998 east side 10" Oak SE 58.53'".
11. An Act 132 survey by George Young P.S. 17640 in Liber 4 Page 269 recorded on April 20, 1981 states "fnd. 1/2" iron in mon box" witnesses: Nail & tag #18998 NW corner fence post SW 38.57'; Nail & tag #18998 SW side 12" Hickory NW 43.10'; Nail & tag #18998 East side 12" Ash North 25.67'; Nail & tag #18998 East side 10" Oak SE 58.53'.
12. An Act 132 survey by Bruce Antcliff P.S. 25826 in Liber 5 Pages 844-845 recorded on January 30, 1989 states "Fnd. Conc. Mon as Recorded in L5 P270 SW Nail in Fnc. Cor. Post 38.57 ft; NW Nail in 12" Hickory 43.10 ft; North Nail in 12" Ash 25.67 ft; SE Nail in 10" Oak 58.53 ft". Measured 2658.03' to F-13.
13. An Act 132 survey by Bruce Antcliff P.S. 25826 in Liber 5 Pages 846-847 recorded on January 30, 1989 states "Fnd. Conc. Mon as Recorded in L5 P270 SW Nail in Fnc. Cor. Post 38.57 ft; NW Nail in 12" Hickory 43.10 ft; North Nail in 12" Ash 25.67 ft; SE Nail in 10" Oak 58.53 ft". Measured 2658.03' to F-13 and 2654.84' to G-12.
14. Act 132 surveys by Ronnie Lester P.S. 18998 in Liber 7 Pages 434-435 and Liber 7 Pages 436-437 recorded on December 8, 1994 states "concrete monument in monument box. Liber 5, Page 270. Set galvanized nail and 1 1/4" brass tag stamped "18998 LESTER" North side 18" pignut, 261 mag. Az. 119.27'; Set galvanized nail and 1 1/4" brass tag stamped "18998 LESTER" East side 18" oak, 150 mag. Az. 58.53'; Northwest corner house 120 mag. Az. 152.90'; Set galvanized nail and 1 1/4" brass tag stamped "18998 LESTER" North side 16" walnut, 267 mag. Az. 199.61'" Measured 2657.93' to F-13 and 2655.10' to G-12.
15. An Act 132 survey by Ronnie Lester P.S. 18998 in Liber 7 Pages 436-437 recorded on December 8, 1994 states "concrete monument in monument box. Liber 5, Page 270. Set galvanized nail and 1 1/4" brass tag stamped "18998 LESTER" North side 18" pignut, 261 mag. Az. 119.27'; Set galvanized nail and 1 1/4" brass tag stamped "18998 LESTER" East side 18" oak, 150 mag. Az. 58.53'; Northwest corner house 120 mag. Az. 152.90'; Set galvanized nail and 1 1/4" brass tag stamped "18998 LESTER" North side 16" walnut, 267 mag. Az. 199.61'" Measured 2657.93' to F-13 and 2655.10' to G-12.

LAND CORNER RECORDATION CERTIFICATE
Filing Requirement of Act 74, Mich. P.A. 1970

For corners in WHITE OAK TOWNSHIP

INGHAM COUNTY

Located In:

Corner Code #

1. Public Land Survey

T 2N R 2E G-11

T R

T R

T R

T R

2. Property Controlling
in Section

S

T R

S

T R

3. Miscellaneous
Property in Sec.

S

T R

S

T R

B: 13 P: 107 07/31/2007 08:22 AM
2007-033646 LAND CORNERS Receipt #30093
Paula Johnson, Ingham County, Michigan

Pages: 2



Register of Deeds Stamp & File Number

4. Lot No. , Recorded Plat

5. Private Claims

I, Maurice H. Mahieu, in a field survey on March 19, 2007, do hereby state that under requirements of P.A. 74, Michigan P.A. of 1970, the corner points mentioned in lines 1 and 2 above were in conformance with regulations and rules therefore as required in the current manual of survey instructions of the United States Department of the Interior, Bureau of Land Management or by a decree of a Court of Law and/or that the corner points mentioned in lines 3, 4 and 5 above were in conformance with the rules of the Michigan Board of Land Surveyors or by a Decree of a Court of Law; established, re-established, monumented, recovered, found as expressed below:

NOTE: Not more than 2 corners, all in the same town and range, may be recorded on this certificate.

A. Description of original monument and accessories and/or subsequent restoration:

1. Original GLO survey by Joseph Wampler D.S. November 30, 1825 notes:

80.00 set post corner of 27, 28, 33 & 34 from which
Ash 7 in bears N26 1/2 W 13 lk
Ash 5 in bears S38W 8 1/2 lk

2. Corner used by A. Jackson, Ingham County Surveyor in a survey dated January 14, 1855. Ingham County Records (V.2, P. 243)(Folder 2 P. 41A) witnessed by: Ash 7 N26 1/2 W 13; Ash 5 S58W 8 1/2 measured 160r16, 40.16 (2650.56') to F-11. No mention of monumentation. (Continued on back)

B. Description of corner evidence found or method applied in restoring or reestablishing corner:

Found 3/4" (I.D.) (1 1/4" O.D.) x 30" pipe on north-south line between farm fields, Excavated 2' x 2' hole 1.5' deep. Found no further evidence. Found 3/4" pipe with brass "State of Michigan" cap North 9.70 feet. Excavated 2' diameter hole 1' deep. Hole was full of rocks. No fences running in any cardinal direction at this position. Located fences 800' to 1000' east and west of irons. "Line connecting end of fence lines runs south of both corners. Line projected east from west fence comes within 1.3 feet south of MDOT iron. Intersection of right lines from 1/4 corners falls 17.72 feet east and 10.43 feet south of south 3/4" pipe." Believe MDOT iron to be at historic fence line intersection which is the perpetuated location of Jackson and McCreary position. Set 2 1/4" aluminum cap stamped PA 345 PS 28414 on found 3/4" pipe (south) and left in position as a Property Controlling Corner. Left MDOT iron in place, stamped PS 28414 on brass cap and accepted as corner. Measured 2657.55' to G-10, 2677.22' to H-11, 2665.50' to G-12, 2665.22' to F-11

C. Description of monument for corner and accessories established to perpetuate locating the position of the corner:

Found 3/4" pipe with brass "State of Michigan" cap stamped PS 28414, witnessed by:
Found nail and tag #25832 (Larry Bryan) west side 6" Cherry stump North 49.80 feet
Found 3/4" iron rod with remonumentation cap (former 3/4"x 30" pipe) South 9.70 feet
Found nail and tag #28414 west side 36" Oak North 53.60 feet
Found 1/2" rod in centerline of Carter Road North 717.73 feet (Continued on second sheet)

Signed by

Maurice H. Mahieu

Date 7-05-07

Surveyor's Michigan License No. 28414



P.A. 345 INGHAM COUNTY
PEER APPROVED 6/19/2007

FORM APPROVED BY MICHIGAN STATE BOARD OF PROFESSIONAL
SURVEYORS, JAN. 28, 1971 REVISED MAY 14, 1975

REVISED JAN., 1983
REVISED OCT., 1995

3. Corner used by John McCreary, Ingham County Surveyor in an undated survey. States "SE corner of sec 28; Ash 7 N26½W 13; Ash 5 S58W 8½". No mention of monumentation.
4. A MDSHT Witness Form 280 by F.K. Holmes P.S. dated September 23, 1965 states "Found intersection of four fences. Alignment very good from Aerial Prints, Resident witnesses & physical evidence. Placed 3/4" Pipe & Brass Sec. Cor. Mon". Witnesses: 16" Oak N55W 29.32'; 22" Oak North 53.34'; 23" Oak S60W 31.64'; 10" BW S80E 44.87'. Measured 2677.308' to H-11.
5. Ingham County Road Commission grid map dated January 1, 1969 states "3/4" pipe (MSHD 1965); 22" Oak N 53.34'; 10" Basswood ESE 44.87'; 23" Oak SW 31.64'; 16" Oak NW 29.32".
6. An Act 74 LCRC by George Young P.S. 17640 in Liber 3 Page 403 recorded on July 15, 1975. Part B states; "found 1 1/4" iron pipe" witnesses Nail & Tag 12" Oak WSW 4.65'; Nail & Tag 12" Oak N 12.32'; Nail & Tag 8" Maple NE 29.75'.
7. An Act 132 survey by George Young P.S. 17640 in Liber 2 Page 394-395 recorded on July 15, 1975 found 1-1/4" iron pipe; witnesses Nail & Washer in 12" Oak WSW 4.65'; Nail & Washer in 12" Oak North 12.32'; Nail & Washer in 8" Maple NE 29.75'.
8. An Act 132 survey by George Young P.S. 17640 in Liber 2 Page 399-400 recorded on July 15, 1975 found 1-1/4" iron pipe; witnesses Nail & Tag in 12" Oak WSW 4.65'; Nail & Tag in 12" Oak North 12.32'; Nail & Tag in 8" Maple NE 29.75'.
9. An Act 132 survey by George Young P.S. 17640 in Liber 5 Page 299-300 recorded on September 16, 1987 found 1-1/4" iron pipe witnesses Nail & Tag 12" Oak WSW 4.65'; Nail & Tag in 12" Oak North 12.32'; Nail & Tag in 8" Maple NE 29.75'.
10. An Act 132 survey by Maurice Mahieu P.S. 28414 in Liber 7 Page 206 recorded on May 17, 1994 no mention of monumentation or witnesses. Measured 2662.28' to H-11.
11. An unrecorded survey by Maurice Mahieu P.S. 28414 on May 25, 2001 states "1" iron pipe inside 1 ½" pipe witnesses: N&T #28414 W side 36" Oak N5E 63.48'; 4" dia. Tablet stamped "State of Michigan" North 9.66'; ½" Iron rod c/l Carter Road North 727.41'; East 1/4 Corner Sec. 28, N00°06'17"E 2657.55'.

PROPERTY CONTROLLING CORNER:

Found 3/4" Pipe with set 2 1/4" aluminum cap stamped PA 345 PS 28414, witnessed by:
Found nail and tag #25832 (Larry Bryan) west side 6" Cherry stump North 59.47 feet
Found nail and tag #28414 west side 36" Oak North 63.48 feet
Found 3/4" pipe and brass "State of Michigan" cap North 9.70 feet (G-11)
Found ½" iron rod in centerline of Carter Road North 727.43 feet



Maurice H. Mahieu

LAND CORNER RECORDATION CERTIFICATE
Filing Requirement of Act 74, Mich. P.A. 1970

For corners in WHITE OAK TOWNSHIP

INGHAM COUNTY

Located In:

Corner Code #

1. Public Land Survey

T 2N R 2E G-12

T R

T R

T R

2. Property Controlling
in Section

S T R

S T R

3. Miscellaneous
Property in Sec.

S T R

S T R

B: 13 P: 108 07/31/2007 08:22 AM
2007-033647 LAND CORNERS Receipt #30093
Paula Johnson, Ingham County, Michigan

Pages: 2



Register of Deeds Stamp & File Number

4. Lot No. , Recorded Plat

5. Private Claims

I, Maurice H. Mahieu, in a field survey on April 20, 2007, do hereby state that under requirements of P.A. 74, Michigan P.A. of 1970, the corner points mentioned in lines 1 and 2 above were in conformance with regulations and rules therefore as required in the current manual of survey instructions of the United States Department of the Interior, Bureau of Land Management or by a decree of a Court of Law and/or that the corner points mentioned in lines 3, 4 and 5 above were in conformance with the rules of the Michigan Board of Land Surveyors or by a Decree of a Court of Law; established, re-established, monumented, recovered, found as expressed below:

NOTE: Not more than 2 corners, all in the same town and range, may be recorded on this certificate.

A. Description of original monument and accessories and/or subsequent restoration:

1. Original GLO survey by Joseph Wampler D.S. November 30, 1825 notes:
40.00 set quarter section post from which
Walnut 9 in bears S67½ E 24½ lk
Lynn 6 in bears N40½ W 22½ lk

2. Corner used by A. Jackson, Ingham County Surveyor in a survey dated September 11, 1838. Ingham County Records (V.1, P.147)(V.4, P.143) no mention of monumentation or witnesses. Measured 161r 3 lks (2658.48') to H-12.

(Continued on back)

B. Description of corner evidence found or method applied in restoring or reestablishing corner:

Found 4" concrete monument and cap #18998 in monument box 0.5' south of centerline of Swan Road on tree line to south. No excavation performed due to previous work at corner by previous remonumentation program. Set 2 1/4" aluminum remonumentation cap stamped PA 345 PS 28414 on found monument. Measured to 2665.60' to G-11; 2666.39 to H-12; 2662.94 to G-13; 2655.04 to F-12

C. Description of monument for corner and accessories established to perpetuate locating the position of the corner:

Found 4" concrete monument and set 2 1/4" aluminum cap stamped PA 345, PS 28414 in monument box.
Witnessed by:

Found nail and tag #25832 NE side 6" Hickory N35°W 32.43 feet
Found nail and tag #25832 east side 21" Walnut North 48.75 feet
Found nail and tag #25832 east side 12" Walnut South 48.63 feet
Set nail and tag #28414 south side 24" Walnut N85°E 166.90 feet

Signed by Maurice H. Mahieu
Maurice H. Mahieu

Surveyor's Michigan License No. 28414

Date 7-25-07

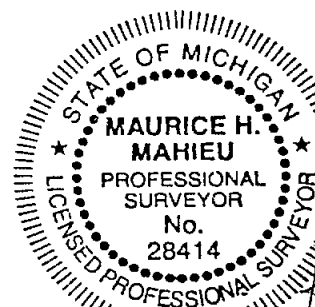


P.A. 345 INGHAM COUNTY
PEER APPROVED 6/19/2007 M

FORM APPROVED BY MICHIGAN STATE BOARD OF PROFESSIONAL
SURVEYORS, JAN. 28, 1971 REVISED MAY 14, 1975

REVISED JAN., 1983
REVISED OCT., 1995

3. Corner used by A. Jackson, Ingham County Surveyor in an survey dated January 28, 1842. Ingham County Records (V.1, P.153)(V.4, P. 147). No mention of monumentation or witnesses.
4. Corner used by A. Jackson, Ingham County Surveyor in a survey dated January 14, 1855. Ingham County Records (V.2, P.243)(Folder 2 Page 41A). No mention of monumentation, witnessed by W. Oak 18 N34½ E 90; W. Oak 18 N88W 63. Measured 160 r (2640.00') to F-12.
5. Corner used by J. Brown, Ingham County Surveyor in a survey dated October 16, 1889. Ingham County Records Folder 2 Page 41B. No mention of monumentation or witnesses.
6. Corner used by W. A. Rowe, Ingham County Surveyor in a survey dated October 12, 1895. Ingham County Records Folder 2 Page 44A. No mention of monumentation or witnesses. Measured 40.28 (2658.48') to H-12 and 40.07 (2644.62') to G-13.
7. Corner used in an undated survey of the Proestal Drain. Corner is 9.60 chs (633.60') west of drain on e-w 1/4 line. No mention of monumentation or witnesses.
8. An Act 74 LCRC by Gary Lester P.S. 17624 in Liber 5 Page 269 recorded August 2, 1979. Part B states "Excavated a hole 10' x 10' to an average depth of 2.0' on the centerline of Swan Road and on fence/tree line to the north and south. Found pointed rock standing straight up and surrounded by smaller rocks in brown clay 2.0' below road surface on fence/tree line to the north and south and +- 1.0' south of the centerline of Swan Road. Measured west +-2656' to F-12 and east +-2667' to H-12. Accepted pointed rock for corner. Excavation conducted by Ingham County Survey and Remonumentation Project crew." Part C states "Set 4" x 36" concrete monument with ½" x 38" rerod and cap #18998 with concrete collar and cover in location of pointed rock described above: Nail & tag, #18998 northwest side 10" Walnut NE 166.95'; Nail & tag #18998 east side 12" Walnut NNW 48.64'; Nail & tag #18998 west side 4" Hickory South 71.37'; Nail & tag #18998 north side 12" Walnut ENE 379.42'".
9. An Act 132 survey by George Young P.S. 17640 in Liber 4 Page 917-918 recorded October 15, 1984 fnd. 4" dia. Conc. Mon w/1/2" rebar Nail & tag, #18998 NE side 10" Walnut NE 166.95'; Nail & tag #18998, E side 12" Walnut NNW 48.64'; Nail & tag, #18998 W side 4" Hickory South 71.37'; Nail & tag #18998 N side 12" Walnut ENE 379.42' Recorded Liber 5, Page 269. Measured 2662.78' to G-13.
10. An Act 132 survey by Bruce Antcliff P.S. 25826 in Liber 5 Pages 846-847 recorded on January 30, 1989 states "Fnd. Conc. Mon. as Recorded in L5 P269 Nail in 10" Walnut NE 166.95'; Nail in 12" Walnut NW 48.64'; Nail in 4" Hickory South 71.37'; Nail in 12" Walnut ENE 379.42' Recorded Liber 5, Page 269. Measured 2663.18' to G-13 and 2654.84' to F-12.
11. Act 132 surveys by Ronnie Lester P.S. 18998 in Liber 7 Pages 434-435 and Liber 7 Pages 436-437 recorded on December 8, 1994 states "concrete monument Liber 5, Page 269. Set galvanized nail and 1 1/4" brass tag stamped "18998 LESTER" in East side 12" walnut 03 mag Az. 48.70'; Set galvanized nail and 1 1/4" brass tag stamped "18998 LESTER" South side 12" walnut 85 mag. Az. 167.24'; set galvanized nail and 1 1/4" brass tag stamped "18998 LESTER" East side 10" shagbark hickory 184 mag. Az. 71.41'; Southeast corner telephone box 323 mag. Az. 35.07' Measured 2655.10' to F-12.



Mahieu

LAND CORNER RECORDATION CERTIFICATE
Filing Requirement of Act 74, Mich. P.A. 1970

For corners in WHITE OAK TOWNSHIP

INGHAM COUNTY

Located In:

Corner Code #

1. Public Land Survey

T 2N R 2E

G-13

T R

T R

T R

2. Property Controlling
in Section

S T R

3. Miscellaneous
Property in Sec.

S T R

B: 13 P: 109 07/31/2007 08:22 AM
2007-033648 LAND CORNERS Receipt #30093
Paula Johnson, Ingham County, Michigan

Pages: 1



Register of Deeds Stamp & File Number

4. Lot No. , Recorded Plat

5. Private Claims

I, Maurice H. Mahieu, in a field survey on April 30, 2007, do hereby state that under requirements of P.A. 74, Michigan P.A. of 1970, the corner points mentioned in lines 1 and 2 above were in conformance with regulations and rules therefore as required in the current manual of survey instructions of the United States Department of the Interior, Bureau of Land Management or by a decree of a Court of Law and /or that the corner points mentioned in lines 3, 4 and 5 above were in conformance with the rules of the Michigan Board of Land Surveyors or by a Decree of a Court of Law; established, re-established, monumented, recovered, found as expressed below:

NOTE: Not more than 2 corners, all in the same town and range, may be recorded on this certificate.

A. Description of original monument and accessories and/or subsequent restoration:

1. Corner was set during the 1994 remonumentation program by David Clifford, P.S. 25837 and recorded in Liber 8, Page 387, on December 1, 1994.

Part B states: Searched at apparent location of corner and found 3/4" pipe on south bank of East-West ditch and 20' East of North-South ditch. Dug all around area and found no other evidence of corner. Accepted pipe as Corner and capped with PA 345 cap.

Part C states: 3/4" Iron Pipe and Pa 345 Cap #25837 5' south of centerline East-West ditch and 20 feet East of North-South ditch.

Set Nail & Tag #25837 in E. Side 18" Maple Stump Naz 225° 12.30'

Set Nail & Tag #25837 in W. Side 12" Mult Maple Naz 168° 6.15'

Set Nail & Tag #25837 in S. Side 18" Maple Naz 90° 34.65'

Set Nail & Tag #25837 in N. Side 8" Mult. Maple Naz 134° 35.25'

3/4" pipe & PA 345 Cap PS 25837 (G-1, T1N, R2E) Naz 268° 114.81'

B. Description of corner evidence found or method applied in restoring or reestablishing corner:

Attempted to look for corner by drain as needed for measurements to adjacent corners for this year's remonumentation program. Did not find corner. Found 3/4" pipe & Cap 25837 at G-1. Re-established position of corner at a point on line between G-1 and H-13 and 114.81 feet East of G-1. Set a 3/4" x 24" smooth iron rod with a 2 1/4" aluminum cap stamped PA 345 PS 28414 at this position. Measured 2662.94' to G-12, 2644.42' to H-13 and 2645.62' to F-13.

C. Description of monument for corner and accessories established to perpetuate locating the position of the corner:

Set 3/4" x 24" smooth iron rod and a 2 1/4" aluminum cap stamped PA 345 PS 28414 at south edge of water.

Witnessed by:

Set remon nail and tag South side double 12" Maple N85°E 40.42 feet

Nail and tag #25837 south side 27" Maple S70°E 34.90 feet

Set remon nail and tag southwest side 15" double Maple S35°E 36.07 feet

Found nail and tag #18998 northeast side 18" Maple S16°W 82.90 feet

Found 3/4" pipe and Cap #25837 West 114.81 feet (G-1, T1N, R2E)

Signed by

Maurice H. Mahieu
Maurice H. Mahieu

Date 7-05-07



Surveyor's Michigan License No. 28414

P.A. 345 INGHAM COUNTY
PEER APPROVED 10/12/1994

FORM APPROVED BY MICHIGAN STATE BOARD OF PROFESSIONAL
SURVEYORS, JAN. 28, 1971 REVISED MAY 14, 1975

REVISED JAN., 1983

REVISED OCT., 1995